

# Installation and Configuration Guide







---

Copyright © 2007 Infor

All rights reserved. The word and design marks set forth herein are trademarks and/or registered trademarks of Infor and/or related affiliates and subsidiaries. All rights reserved. All other trademarks listed herein are the property of their respective owners.

### Important Notices

The material contained in this publication (including any supplementary information) constitutes and contains confidential and proprietary information of Infor.

By gaining access to the attached, you acknowledge and agree that the material (including any modification, translation or adaptation of the material) and all copyright, trade secrets and all other right, title and interest therein, are the sole property of Infor and that you shall not gain right, title or interest in the material (including any modification, translation or adaptation of the material) by virtue of your review thereof other than the non-exclusive right to use the material solely in connection with and the furtherance of your license and use of software made available to your company from Infor pursuant to a separate agreement ("Purpose").

In addition, by accessing the enclosed material, you acknowledge and agree that you are required to maintain such material in strict confidence and that your use of such material is limited to the Purpose described above.

Although Infor has taken due care to ensure that the material included in this publication is accurate and complete, Infor cannot warrant that the information contained in this publication is complete, does not contain typographical or other errors, or will meet your specific requirements. As such, Infor does not assume and hereby disclaims all liability, consequential or otherwise, for any loss or damage to any person or entity which is caused by or relates to errors or omissions in this publication (including any supplementary information), whether such errors or omissions result from negligence, accident or any other cause.

### Trademark Acknowledgements

Infor is a registered trademark of Infor Global Solutions in the United States and/or other countries.

All other company, product, trade or service names referenced may be registered trademarks or trademarks of their respective owners.

### Publication Information

**Document code:** U9035D US

**Release:** Infor® Integration Pack 1.5.1 for ERP LN Vertex O Series

**Publication date:** March 08

---







---

# Table of Contents Table of Contents

Definitions, acronyms, and abbreviations.....	1-2
<b>Chapter 1 Introduction .....</b>	<b>1-4</b>
<b>Chapter 2 Installation .....</b>	<b>2-6</b>
Prerequisites .....	2-6
To install the INFOR Integration Pack.....	2-7
To start the INFOR Integration Pack .....	2-10
Windows.....	2-10
UNIX .....	2-10
To specify a BusComponent .....	2-11
To stop the INFOR Integration Pack .....	2-11
Test the INFOR Integration Pack Installation .....	2-11
To run the INFOR Integration Pack as Service .....	2-11
Windows.....	2-11
Troubleshooting .....	2-14
<b>Chapter 3 Configuration.....</b>	<b>3-15</b>
General .....	3-15
Defaults .....	3-16
The BusComponent .....	3-16



The INFOR Integration Pack .....	3-17
Logging .....	3-18
Other configuration files .....	3-19
<b>Chapter 4     Auxiliary Tools .....</b>	<b>4-20</b>
Parameters.....	4-20
vertexTest .....	4-21
getGeocode.....	4-21
calculateTax40 .....	4-21
quoteTax40 .....	4-22
purchaseOrderTPP .....	4-22
TaxOnlyAdjustmentSale.....	4-22
<b>Chapter 5     Troubleshooting .....</b>	<b>5-23</b>
OW_C4JAVA_HOME not defined .....	5-23
Unknown bus component.....	5-24



---

## About this Guide

This document is an Installation and Configuration Guide that describes how to install and configure the INFOR Integration Pack 1.5.1 for INFOR ERP LN and Vertex O Series. This document is intended for system administrators.

This document contains the following chapters and appendices:

Chapter 1, "Introduction," describes the general concepts of the Integration Pack on a functional level. This chapter describes the various components of the Integration Pack, and describes how these components work together.

Chapter 2, "Installation," describes the procedure to install the Integration Pack.

Chapter 3, "Configuration," describes how to configure the Integration Pack so that you can begin to adopt applications.

Chapter 4, "Auxiliary Tools," describes tools to test the Integration Pack.

Chapter 5, "Troubleshooting," describes problems and solutions.

### **Send us your comments**

We continually review and improve our documentation. Any remarks/requests for information concerning this document or topic are appreciated. Please e-mail your comments to [documentation@Inforglobal.com](mailto:documentation@Inforglobal.com).

In your e-mail, refer to the document number and title. More specific information will enable us to process feedback efficiently.



## Definitions, acronyms, and abbreviations

Term	Definition
API	Application Programming Interface
BAANHOME	Environment variable for SLM installation directory, which is %BAANHOME% for Windows and \$BAANHOME for UNIX and AS/400.
BCLM	Baan Common License Manager: The former name of the INFOR License Manager. The INFOR License Manager is still abbreviated as BCLM on implementation level to keep the license manager backward compatible.
BusComponent	Socket stored in an LDAP
Company Names	INFOR Global Solutions, Inc.
DLL	Dynamic Link Library: A collection of precompiled and frequently used routines not explicitly linked to every program that uses them.
HTTP	Hyper Text Transfer Protocol
IP	Internet Protocol
J2SE	Server base Java development environment from sun
LDAP	Directory Service of Infor Integration
Port	Communication Endpoint for a computer
SLM	Infor License Manager: The product previously known as the Baan Common License Manager (BCLM).
SLMHOME	Environment variable for SLM installation directory, which is %SLMHOME% for Windows and \$SLMHOME for UNIX and AS/400.
SLM server	The SLM engine that handles license requests and management requests.



Term	Definition
SLSA	Software License and Support Agreement: The contract between the customer and INFOR Global, which states, among other things, the applications, the type of licensing, and the amount of licenses. You can usually find that information in Schedule A of the SLSA.
Socket	Communication endpoint in an application, which is addressed with an IP address and a port number
UI	User Interface
URI	Uniform Resource Identifier
URL	Uniform Resource Locator
Users File	The XML data file with all the users of a named user license for a particular product, including the user name, the user type, and the number of licenses a user is permitted to use.
XML	Extensible Markup Language

---



# Chapter 1

## Introduction

# 1

INFOR Integration Pack 1.5.1 connects to INFOR ERP LN 6.1 FP3 by means of SSA Integration 6.0 (or Infor Integration 6.2 ) with the Vertex O Series 4.0 interface.

The following figure illustrates the software components involved in the integration to Vertex O Series:

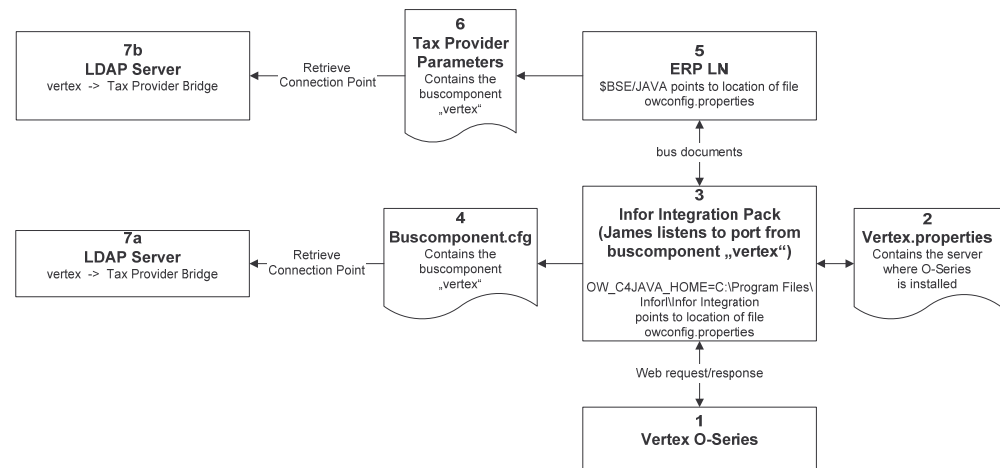


Figure 1-1: Component Architecture



The following list describes the various components labeled 1 through 7b in the figure:

- 1 Server on which the Vertex O Series Web service runs.
- 2 File that contains the socket the Vertex O Series Web service runs.
- 3 The Integration Pack converts the bus documents into a Vertex O Series Web service request, and vice versa.
- 4 File that contains the BusComponent of the LDAP specified in `OW_C4JAVA_HOME`, which is used to receive incoming BusDocuments sent by ERP LN.
- 5 In `$BSE/JAVA`, `owconfig.properties` contain the location of the LDAP used by SSA Integration 6.0 or Infor Integration 6.2.
- 6 The Tax Provider Parameter table contains the BusComponent of the LDAP to be used to connect to the INFOR Integration Pack.
- 7 Consists of the following LDAPs:
  - a LDAP of the INFOR Integration Pack
  - b LDAP used by INFOR ERP LN

**Note:** These LDAP servers can be identical.

For technical details on how to configure your INFOR Integration Pack, refer to the “Configuration” chapter.

---



## Chapter 2 Installation

# 2

This chapter describes how to install the INFOR Integration Pack.

For detailed information on how to configure a working INFOR Integration Pack, refer to the “Configuration” chapter.

### Prerequisites

Before you install the INFOR Integration Pack, check that your system meets the following prerequisites:

- Java Runtime Environment 1.5.0\_13
- Software License Manager (SLM) installed
- SSA Integration 6.0 Server for Java with a license for the Java Server’s server component (product ID 7062)  
Alternative: Infor Integration 6.2 Server for Java with a license for the Java Server (product ID)
- Vertex Integration Server license (product ID 7103)
- Vertex O Series 4.0 with Web-service component installed and running
- INFOR ERP <sub>LN</sub> 6.1 FP3



- For Windows: Microsoft Resource Kit to run the INFOR Integration Pack as service on the installation server. Download the Resource Kit applicable to the Windows Server version on which you want to install the INFOR Integration Pack from <http://www.microsoft.com/downloads>.

## To install the INFOR Integration Pack

You receive the INFOR Integration Pack in the form of a .zip archive. If you work with a Windows system, use the .zip archive. If you work with a UNIX system, use the .gz archive.

### Windows:

Use WinZip to extract the archive to the directory (*<installDir>*) on which you want the INFOR Integration Pack to run.

### UNIX:

1 Extract the .gz archive, for example, using the following command:

```
gzip -d Infor Integration Pack 1.5.1.tar.gz
```

2 Unpack the resulting .tar archive, for example, using the following command:

```
tar xf Infor Integration Pack 1.5.1.tar
```

3 Move the contents of the unpacked archive to the directory in which you want to run the INFOR Integration Pack.

The *<installDir>* directory must contain the following directories and files:

- bin/
  - doc/
  - etc/
  - lib/
  - README
  - version.txt
-



You must make the software aware of the other software on which it depends. You can do this in one of two ways:

- Set the environment variables to point to the relevant installation directories:

---

### Environment Variables

---

Variable	Description
BAANHOME	<p>The INFOR License Manager installation directory. In particular, the following file, among others must be present:</p> <p><code>&lt;BAANHOME&gt;/java/com_baan_bclm.jar</code></p> <p>If INFOR Open Architecture is installed, this variable is already set.</p>
OW_C4JAVA_HOME	<p>The Connector for Java installation directory. In particular, the following files, among others, must be present:</p> <p><code>&lt;OW_C4JAVA_HOME&gt;/java/ow.jar</code>  <code>&lt;OW_C4JAVA_HOME&gt;/java/ow3p.jar</code></p> <p>On Windows, for example, the directory is:  C:\Program Files\INFOR\INFOR Integration</p> <p>You must set this variable.</p>
JVM_OPTIONS	<p>Set this file to reserve, for example, additional memory for the VM:</p> <p><code>JVM_OPTIONS = -Xmx256m</code></p>

---

- Create or edit a configuration file or script to supply the software with information about where the other components are installed. You can do this in various ways, depending on the platform you want to install.

Be sure to modify the files `buscomponent.cfg` and `vertex.properties`, as described in the “Configuration” chapter.

INFOR Global recommends the following setups for your system:

### Set the environment variables on Microsoft Windows

1 Edit the `setEnv.bat` file, which is available in the following directory:



```
<installDir>/bin/
```

2. Uncomment the appropriate lines and fill the variables, as described previously in the Environment Variables table.

### Set the environment variables on UNIX and AS/400

Two methods are available to configure the INFOR Integration Pack's software dependencies on UNIX platforms:

- **System-wide**  
Involves setting up an .owTpBridge file in the /etc directory.
- **User-specific**  
Involves setting up an .owTpBridge file in the \${HOME} directory.

The user-specific variant takes precedence over a system-wide file. The syntax of the two files is exactly the same. In fact, both files are sourced in from a shell script. A template is available in:

```
<installDir>/etc/owTpBridge.template.
```

You can use this template to uncomment the appropriate lines and fill in the variables, as described previously in this chapter in the Environment Variables table.

The following is an example for the owTpBridge file:

```
#####
# Installation configuration properties
#####
## Uncomment this line to enable debug output
# DEBUG=on
## Uncomment and set this variable to specify the SLM installation directory
# BAANHOME=/usr/baan/shared
## Uncomment and set this variable to specify the INFOR Open Arch. Connector
## for Java installation directory
# OW_C4JAVA_HOME=/baan/b61a_cus/bse
## Uncomment and change this variable if your java installation has not added
## the java command to the PATH environment variable or if you wish to use an
## alternative java implementation
# JAVA_CMD=/opt/java1.5/jre/bin/java
## Uncomment and set this variable if you wish to pass extra options to the
## Java VM
# JVM_OPTIONS=
```



## To start the INFOR Integration Pack

The process to start the INFOR Integration Pack is similar on all supported platforms. You must first configure the INFOR Integration Pack; otherwise, the INFOR Integration Pack will most likely fail to start. The configuration options are described previously in this chapter. At a minimum, you must add a BusComponent to the LDAP of your INFOR Open Architecture installation and you must configure the address.lookup.tax\_areas and address.calculate.tax properties in the following file: `<installDir>/vertex.properties`.

### Windows

1 Open a command console and run the following batch file:

```
<installDir>\bin\startBridge
```

2 Pass the following as an argument if you do not use the default BusComponent **vertex**:

```
-Dbc=<mybuscomponentName>
```

#### Example

```
<installDir>\bin\startBridge -Dbc=myBusComponent
```

### UNIX

1 Run the following script:

```
$ <installDir>/bin/startBridge
```

2 Start the INFOR Integration Pack using the following command if you do not use the standard BusComponent **vertex**:

```
$ <installDir>/bin/startBridge -Dbc=myBusComponent
```



## To specify a BusComponent

On both Windows and UNIX platforms, you can optionally specify the BusComponent to listen for incoming requests from ERP LN. For example, on a UNIX machine, you specify the BusComponents as follows:

```
$ <installDir>/bin/startBridge -Dbc=myBusComponent
```

If you do not specify a BusComponent, the BusComponent set in the configuration files is used. For more information, refer to the file configure.txt.

## To stop the INFOR Integration Pack

To stop the INFOR Integration Pack, you must end the INFOR Integration Pack process, for example, press CTRL+C, or send a hang-up (HUP) signal to the process, such as the following:

```
$ kill <processID>
```

## Test the INFOR Integration Pack Installation

As part of this delivery, some tools are packaged that enable you to test whether vertex is up and running and whether the INFOR Integration Pack is up and running. The tools.txt document describes each of these test tools in detail.

## To run the INFOR Integration Pack as Service

### Windows

- 1 Open a command prompt (running cmd.exe) and change to the Microsoft Resource Kit directory that contains instsrv.exe; this directory is called <resourceKitDir>.

```
> cd C:\Program Files\Windows Resource Kits\Tools
```

---



2 Run `instsrv <myService> <installDir>\bin\svany.exe` to create a service to start the INFOR Integration Pack.

```
> cd C:\Program Files\Windows Resource Kits\Tools
> instsrv BridgeVertex
C:\Bridge\build\debug\stagingArea\windows\bin\svany.exe
```

If the process is successful, a command window similar to the following appears:

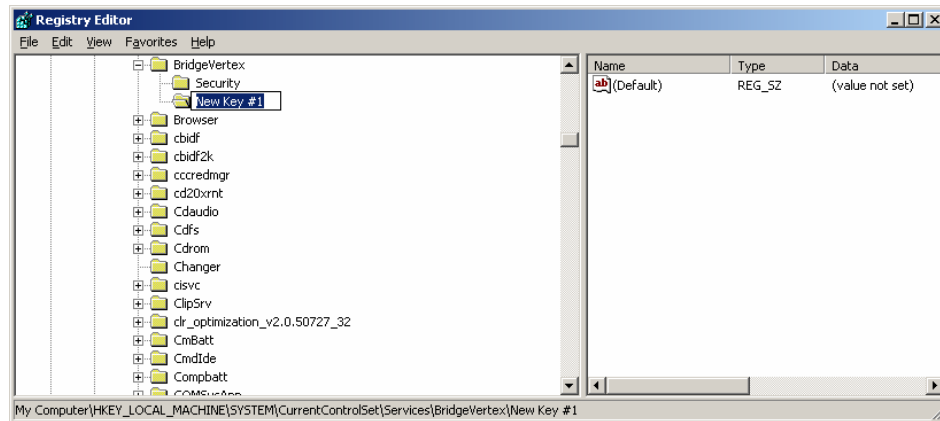


```
cmd.exe
C:\Program Files\Windows Resource Kits\Tools>instsrv BridgeVertex C:\Bridge\build\debug\stagingArea\windows\bin\svany.exe
The service was successfully added!
Make sure that you go into the Control Panel and use
the Services applet to change the Account Name and
Password that this newly installed service will use
for its Security Context.
C:\Program Files\Windows Resource Kits\Tools>
```

3 Run `regedit` and go to the following directory:

My Computer\HKEY\_LOCAL\_MACHINE\SYSTEM\CurrentControlSet\Services

4 Select `<myService>` and, on the **Edit** menu, click **New → Key**.

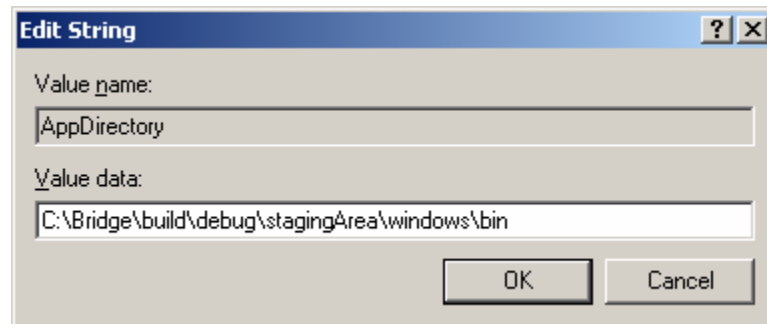


5 Change the name to **Parameters**, select **Parameters**, and add two new string keys:

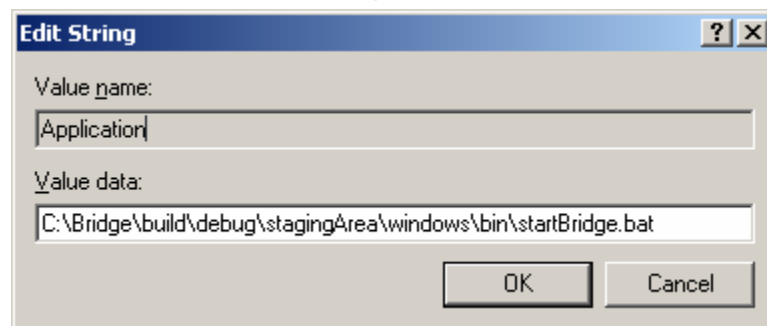
- AppDirectory
- Application



6 Change the **Value Data** setting of AppDirectory to `<installDir>\bin`.



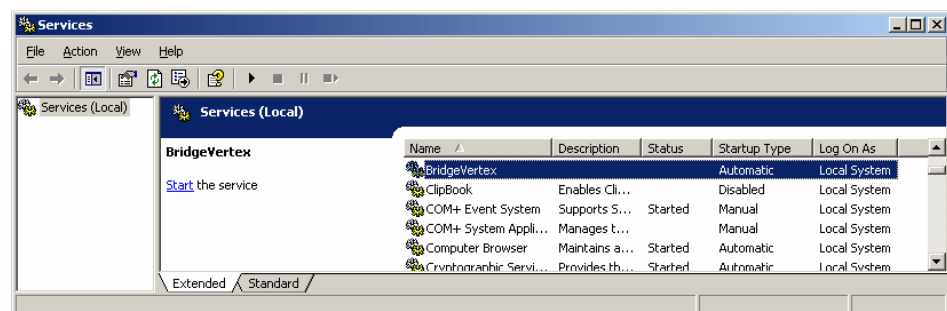
7 Change the **Value Data** setting of **Application** to `<installDir>\bin\startBridge.bat`.



Do not change any other changes to the settings

8 Close the Registry Editor.

9 On the Control Panel, click **Administrative Tools** → **Services**:



10 Start the service and run the test scripts as described in the “Auxiliary Tools” chapter.



## Troubleshooting

The standard configuration produces a log file in your home directory that records the main input/output events in the INFOR Integration Pack and prints errors and warnings on the console. For more details, refer to the logging configuration section in the `configure.txt` document. Refer also to the INFOR Integration log files, both on the ERP LN machine and on the INFOR Integration Pack machine, or to the vertex log files.



## Chapter 3 Configuration

# 3

This chapter describes the process to configure the INFOR Integration Pack. This chapter assumes that the INFOR Integration Pack is already installed. For more specific details on how to install the INFOR Integration Pack, refer to the “Installation” chapter.

### General

All INFOR Integration Pack-specific configuration files are available in the following directory:

- `<installDir>/etc`

where `<installDir>` is the INFOR Integration Pack's installation directory.

As shipped, the files contain reasonable defaults. However, you will most likely need to edit the configuration to achieve a working setup. In particular, refer to “The BusComponent” and “The INFOR Integration Pack,” later in this chapter.

---



## Defaults

As shipped, the configuration files are suitable for a system described as follows:

- An installation of INFOR Integration 6.0 that uses an LDAP that includes a BusComponent called **vertex**, configured for your INFOR Integration Pack installation to listen on. For example, a BusComponent with a URI of the form `socket ://<host>:9090`, where `<host>` is the name of the machine on which the INFOR Integration Pack is installed.
- The vertex Web service running on the same machine as the INFOR Integration Pack.
- The vertex Web service listening on port 8080 and installed in the default Web context, in other words, the location the vertex documentation suggests the Web service be installed.
- A user **ssa** defined in the vertex environment with password **ssa123** that has sufficient rights to perform tax calculations and update the tax register – Vertex O Series partition administrator.

If your configuration fails to meet any of these conditions, you must alter the configuration files to fit.

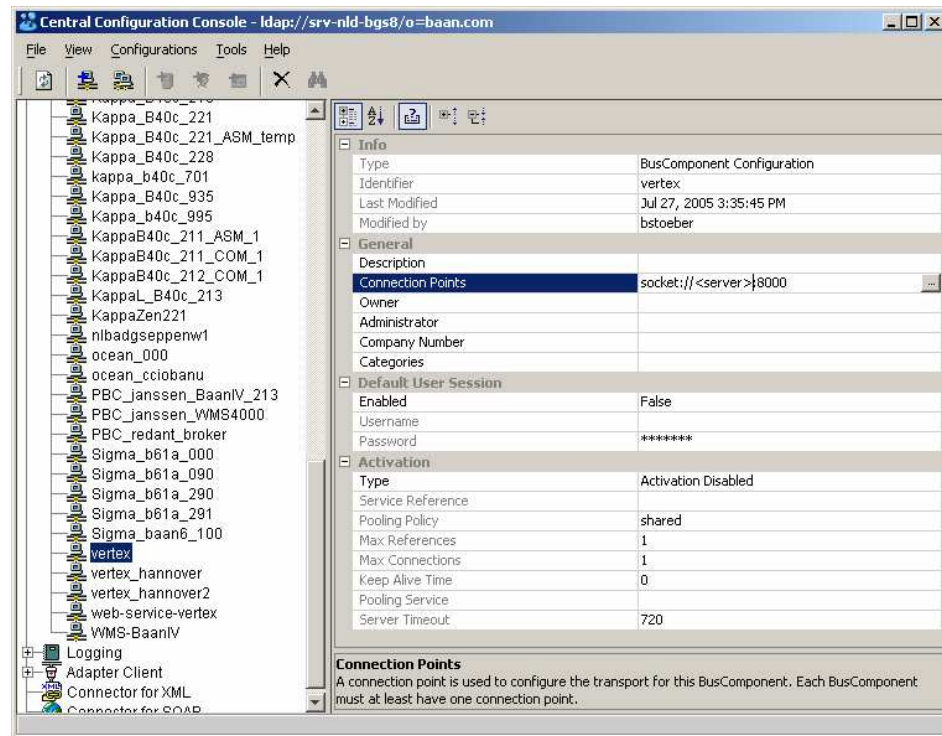
## The BusComponent

A relevant configuration file is: `<installDir>/etc/buscomponent.cfg`

The INFOR Integration Pack needs a BusComponent in the LDAP that the INFOR Integration installation uses to listen on. ERP LN can then send requests for the INFOR Integration Pack to this BusComponent. By default, this BusComponent is named **vertex**. For information on how to create and edit BusComponents, refer to the INFOR Integration documentation. If you want the INFOR Integration Pack to listen on a BusComponent with a different name, edit the `buscomponent.cfg` configuration file, which simply contains the name of the BusComponent to use. Be careful not to add any unnecessary additional characters in this file.



You can use the Central Configuration Console of the INFOR Open Architecture Adapter Tools, as shown in the following figure, to retrieve the name of the BusComponent for the Vertex software:



## The INFOR Integration Pack

A relevant configuration file is: `<installDir>/etc/vertex.properties`.

To establish a connection to the Vertex Web service, several parameters are required, which you can configure in the `vertex.properties` configuration file. The file contains a list of key/value pairs, each pair on a separate line. The following lines are ignored:

- Lines that start with a pound sign (#)
- Lines that start with an exclamation mark (!)
- Empty lines



Example configuration lines do not begin with a pound sign (#). For details of the file format, such as how to include non-ASCII characters, refer to the documentation for the standard Java class `java.util.Properties`:

<http://java.sun.com>.

```
# Vertex tax provider configuration file
# Address where the Vertex LookupTaxAreas web service (document based) can
be reached
address.lookup.tax_areas = http://localhost:8080/vertex-
ws/services/LookupTaxAreasDoc

# Address where the Vertex LookupTaxAreas web service (document based) can
be reached
address.calculate.tax = http://localhost:8080/vertex-
ws/services/CalculateTaxDoc

# User name to use to log on to Vertex
user.name = ssa

# Password to use to log on to Vertex
password = ssa123
```

The recognized keys are the following:

- `address.lookup.tax_areas`  
The HTTP URL that you use to look up tax areas
- `address.calculate.tax`  
The HTTP URL that you use to calculate tax and update the tax register
- `user.name`  
The user name that you use to connect to Vertex
- `password`  
The password that you use to connect to Vertex

## Logging

The following is a relevant configuration file:

`<installDir>/etc/logging.properties`

The INFOR Integration Pack uses the standard Java logging facility. Various configuration options are available for this framework. For details, refer to the documentation that comes with the J2SE download at <http://java.sun.com>.



The default configuration sends errors and warnings to the console. A log file is also configured that contains additional information, such as details of all requests and responses.

The log file is configured to rotate every 1,000,000 bytes. By default the current log file (if only one INFOR Integration Pack is running) is called **taxbridge0.log0** and can be found in the home directory of the user who is running the INFOR Integration Pack. An example of how to alter the logging configuration is to maximize the amount of detail shown in the log file. To do this, change the following line:

```
.level= INFO
```

into

```
.level= FINEST
```

in the **logging.properties** configuration file.

If you cannot diagnose a problem using the log file described previously, you might need to examine the Open Architecture logging. For information on how to configure and use Open Architecture logging, refer to the Open Architecture documentation.

## Other configuration files

The relevant configuration files are as follows:

- *<installDir>/etc/james.cfg*  
This file lists all Java Classes required for the communication between ERP<sub>LN</sub> and Vertex O Series.
- *<installDir>/etc/bridge.properties*  
This file lists the component to be used for incoming calls.

You must not change these two files. These files are only of interest to the developers of the INFOR Integration Pack. Changes to the contents of these files will cause the INFOR Integration Pack to break down.

---



## Chapter 4 Auxiliary Tools

# 4

In addition to the startBridge script, the *<installDir>/bin* directory contains a number of other scripts, for example, to start tools that help you diagnose problems and verify your installation. This chapter describes each of tools in detail.

### Parameters

Input parameters are passed to the tools on the command line in the form of key-value pairs. These command-line arguments look like the following:

- `-D<key>=<value>`

#### Example

```
Dcity=WASHINGTON
```

Many parameters have default values that make the tools easy to use for verification purposes. When you run a tool, the selected values for the various parameter keys are echoed to the console.

Most available parameters are not described here, but rather only the parameters minimally required to run the tools. For details on which parameters are available for a specific tool, run the tool with no arguments.



To run the test batches in a Windows environment, you must use a second command console.

## vertexTest

The vertexTest script contacts the vertex Web service directly to look for a tax area ID. You can use this tool to check if the Web service is running. The tool checks the **City**, **State**, and **ZIP Code** parameters. You must set the **Backend** parameter to the address of the LookupTaxAreasDoc vertex Web service, for example:

```
-Dbackend=http://vertex.my.domain.com:8080/vertex-  
ws/services/LookupTaxAreasDoc
```

By default, the **Backend** parameter is set to:

```
http://localhost:8080/vertex-ws/services/LookupTaxAreasDoc
```

## getGeocode

This script does the same thing as the vertexTest script, but goes through the INFOR Integration Pack. You can use this tool to check if both the INFOR Integration Pack and the vertex Web service are running.

Set the **bc** parameter to the BusComponent to contact the INFOR Integration Pack. By default, the **bc** parameter is set to **vertex**.

## calculateTax40

This script sends a request to calculate tax for a sales invoice to the vertex Web service through the INFOR Integration Pack. The script involves a large number of parameters.

You must set the **bc** parameter to the BusComponent to contact the INFOR Integration Pack. By default, the **bc** parameter is set to **vertex**.

---



## quoteTax40

This script sends a request to quote tax for a sales invoice to the vertex Web service through the INFOR Integration Pack. This process takes a large amount of parameters.

You must set the **bc** parameter to the BusComponent to contact the INFOR Integration Pack. By default, the **bc** parameter is set to **vertex**.

## purchaseOrderTPP

This script sends a request to quote tax for a purchase order to the vertex Web service through the INFOR Integration Pack. This process takes a large amount of parameters.

You must set the **bc** parameter to the BusComponent to contact the INFOR Integration Pack. By default, the **bc** parameter is set to **vertex**.

## TaxOnlyAdjustmentSale

This script performs a tax-only adjustment for a sales invoice to the vertex Web service through the INFOR Integration Pack. This process requires a large number of parameters.

You must set the **bc** parameter to the BusComponent to contact the INFOR Integration Pack. By default, the **bc** parameter is set to **vertex**.



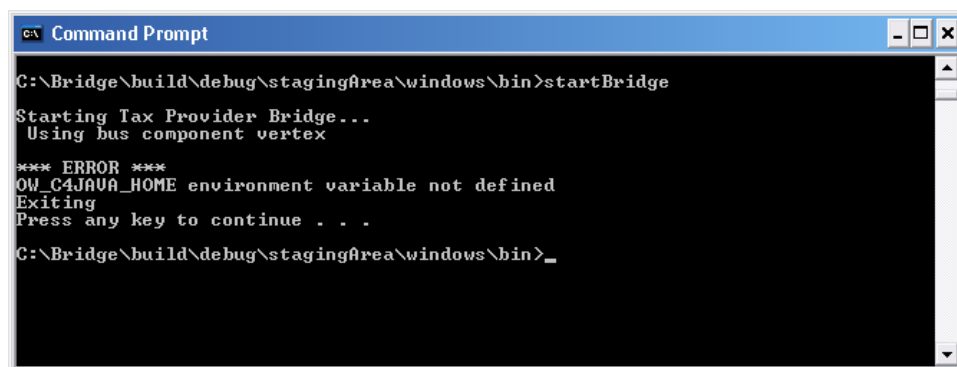
## Chapter 5 Troubleshooting

# 5

This chapter contains examples, which problems could occur and how to solve them.

### OW\_C4JAVA\_HOME not defined

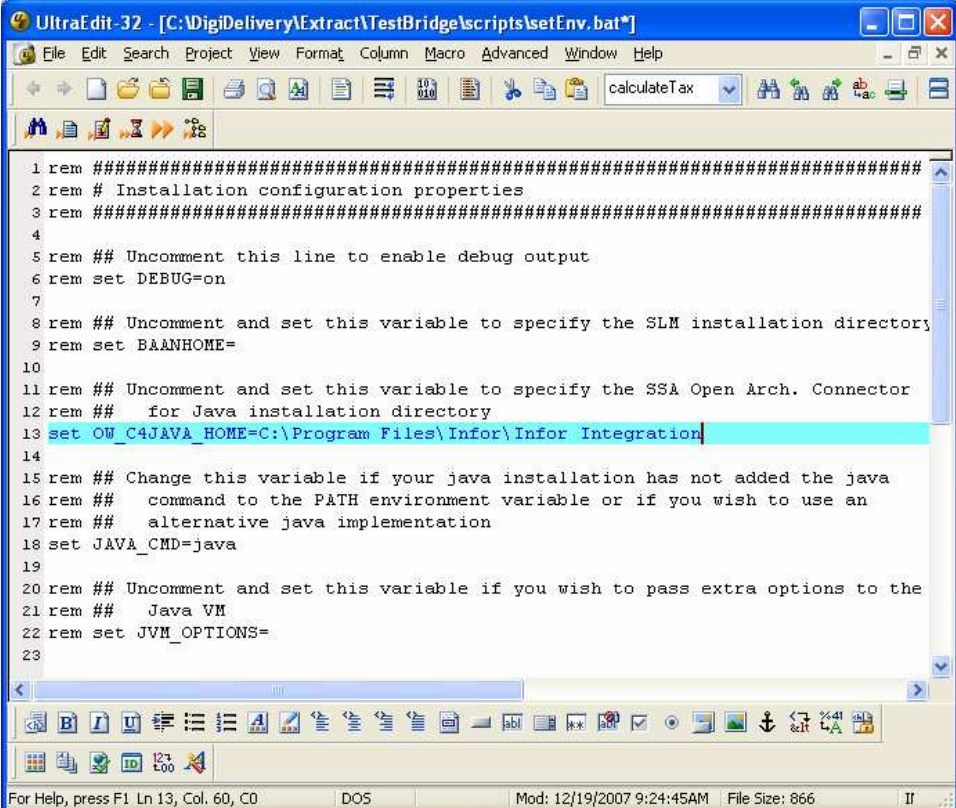
When starting the bridge the following error may appear:

A screenshot of a Windows Command Prompt window. The title bar is blue and says "Command Prompt". The command prompt shows the following text:

```
C:\Bridge\build\debug\stagingArea\windows\bin>startBridge
Starting Tax Provider Bridge...
Using bus component vertex
*** ERROR ***
OW_C4JAVA_HOME environment variable not defined
Exiting
Press any key to continue . . .
C:\Bridge\build\debug\stagingArea\windows\bin>_
```



Edit the file setenv.bat (located in subdirectory /bin of the INFOR Integration Pack installation directory) and set the variable OW\_C4JAVA\_HOME to specify the directory where your INFOR Open Architecture Connector for Java has been installed.



```
1 rem #####
2 rem # Installation configuration properties
3 rem #####
4
5 rem ## Uncomment this line to enable debug output
6 rem set DEBUG=on
7
8 rem ## Uncomment and set this variable to specify the SLM installation directory
9 rem set BAANHOME=
10
11 rem ## Uncomment and set this variable to specify the SSA Open Arch. Connector
12 rem ##   for Java installation directory
13 set OW_C4JAVA_HOME=C:\Program Files\Infor\Infor Integration
14
15 rem ## Change this variable if your java installation has not added the java
16 rem ##   command to the PATH environment variable or if you wish to use an
17 rem ##   alternative java implementation
18 set JAVA_CMD=java
19
20 rem ## Uncomment and set this variable if you wish to pass extra options to the
21 rem ##   Java VM
22 rem set JVM_OPTIONS=
23
```

## Unknown bus component

When starting the bridge the following error message may appear:

“Can not start bus component ‘vertex’ by James”



```
C:\Bridge\build\debug\stagingArea\windows\bin>startBridge

Starting Tax Provider Bridge...
Using bus component vertex
CLASSPATH=C:\Bridge\build\debug\stagingArea\windows\bin\..\etc;C:\Bridge\build\debug\stagingArea\windows\bin\..\lib\ow-tpbridge.jar;C:\Bridge\build\debug\stagingArea\windows\bin\..\lib\jaxb-api.jar;C:\Bridge\build\debug\stagingArea\windows\bin\..\lib\jaxb-impl.jar;C:\Bridge\build\debug\stagingArea\windows\bin\..\lib\jaxb-libs.jar;C:\Bridge\build\debug\stagingArea\windows\bin\..\lib\jax-gname.jar;C:\Bridge\build\debug\stagingArea\windows\bin\..\lib\namespace.jar;C:\Bridge\build\debug\stagingArea\windows\bin\..\lib\relaxngDatatype.jar;C:\Bridge\build\debug\stagingArea\windows\bin\..\lib\saa-j-api.jar;C:\Bridge\build\debug\stagingArea\windows\bin\..\lib\saa-j-impl.jar;C:\Bridge\build\debug\stagingArea\windows\bin\..\lib\jaxp-api.jar;C:\Bridge\build\debug\stagingArea\windows\bin\..\lib\dom.jar;C:\Bridge\build\debug\stagingArea\windows\bin\..\lib\sax.jar;C:\Bridge\build\debug\stagingArea\windows\bin\..\lib\xalan.jar;C:\Bridge\build\debug\stagingArea\windows\bin\..\lib\xercesImpl.jar;C:\Bridge\build\debug\stagingArea\windows\bin\..\lib\activation.jar;C:\Bridge\build\debug\stagingArea\windows\bin\..\lib\jaxrpc-api.jar;C:\Bridge\build\debug\stagingArea\windows\bin\..\lib\jaxrpc-impl.jar;C:\Bridge\build\debug\stagingArea\windows\bin\..\lib\jaxrpc-spi.jar;C:\Bridge\build\debug\stagingArea\windows\bin\..\lib\mail.jar;C:\Program Files\Baan\shared\java\com_baanelm.jar;C:\Program Files\SSA Global\SSA Integration\java\ow.jar;C:\Program Files\SSA Global\SSA Integration\java\owxml.jar;C:\Program Files\SSA Global\SSA Integration\java\exprt.jar;C:\Program Files\SSA Global\SSA Integration\java
Path="C:\Program Files\Baan\shared\bin;C:\Program Files\Baan\shared\shlib;C:\Program Files\Windows Resource Kits\Tools;C:\WINDOWS\system32;C:\WINDOWS;C:\WINDOWS\System32\Wbem;C:\Program Files\ATI Technologies\ATI Control Panel;C:\Program Files\UltraEdit;C:\Program Files\scopus32\sybase\dll;C:\Program Files\ManageSoft\Common;C:\Program Files\Baan\shared\bin;C:\Program Files\Baan\shared\shlib;C:\Program Files\Rational\ClearCase\bin;C:\Program Files\Rational\common;C:\Program Files\Microsoft SQL Server\80\Tools\Binn;C:\Program Files\Java\jre1.4.2_08\bin\client;C:\j2sdk1.4.2_08\bin;C:\Program Files\SSA Global\SSA Integration\bin;C:\Program Files\Java\j2re1.4.2_08\bin\client
PATHEXT=.COM;.EXE;.BAT;.CMD;.VBS;.UBE;.JS;.JSE;.WSF;.WSH
Environment variable JUM_OPTIONS not defined

Executing:
"java" "-Dcom.ssa.ta.taxprovider.install.dir=C:\Bridge\build\debug\stagingArea\windows\bin\.." "-Djava.util.logging.config.file=C:\Bridge\build\debug\stagingArea\windows\bin\..\etc\logging.properties" com.eibus.java.james.James vertex

James - Server for Java
(c) Copyright 2006 SSA Global Technologies, Inc. and its Subsidiaries and Affiliates

Exception: java.lang.Exception: Can not start bus component 'vertex' by James

C:\Bridge\build\debug\stagingArea\windows\bin>
```

Edit the configuration file `buscomponent.cfg` in the `/etc` subdirectory where the INFOR Integration Pack has been installed and insert the name of the buscomponent, the INFOR Integration Pack shall listen on, for example:  
**vertex bstoeber**