

# Installation and Deployment Guide for SP25



---

Copyright © 2008 Infor

All rights reserved. The word and design marks set forth herein are trademarks and/or registered trademarks of Infor and/or related affiliates and subsidiaries. All rights reserved. All other trademarks listed herein are the property of their respective owners.

## Important Notices

The material contained in this publication (including any supplementary information) constitutes and contains confidential and proprietary information of Infor.

By gaining access to the attached, you acknowledge and agree that the material (including any modification, translation or adaptation of the material) and all copyright, trade secrets and all other right, title and interest therein, are the sole property of Infor and that you shall not gain right, title or interest in the material (including any modification, translation or adaptation of the material) by virtue of your review thereof other than the non-exclusive right to use the material solely in connection with and the furtherance of your license and use of software made available to your company from Infor pursuant to a separate agreement ("Purpose").

In addition, by accessing the enclosed material, you acknowledge and agree that you are required to maintain such material in strict confidence and that your use of such material is limited to the Purpose described above.

Although Infor has taken due care to ensure that the material included in this publication is accurate and complete, Infor cannot warrant that the information contained in this publication is complete, does not contain typographical or other errors, or will meet your specific requirements. As such, Infor does not assume and hereby disclaims all liability, consequential or otherwise, for any loss or damage to any person or entity which is caused by or relates to errors or omissions in this publication (including any supplementary information), whether such errors or omissions result from negligence, accident or any other cause.

## Trademark Acknowledgements

All other company, product, trade or service names referenced may be registered trademarks or trademarks of their respective owners.

## Publication Information

**Document code:** U9472A US

**Release:** Infor Baan IVc4

**Publication date:** July 08

---



---

# Table of Contents

|                  |  |            |
|------------------|--|------------|
| <b>Chapter 1</b> | <b>Introduction .....</b>                                    | <b>1-1</b> |
|                  | Contents.....  | 1-3        |
| <b>Chapter 2</b> | <b>To Install the Service Pack.....</b>                      | <b>2-1</b> |
|                  | Pre-installation requirements .....                          | 2-1        |
|                  | To install the Service Pack.....                             | 2-3        |
|                  | To install the Tools .....                                   | 2-4        |
|                  | To install the applications.....                             | 2-7        |
|                  | Post-installation instructions.....                          | 2-11       |
|                  | Source codes of PMC Service Packs.....                       | 2-11       |
| <b>Chapter 3</b> | <b>Functional Enhancements and Important Solutions .....</b> | <b>3-1</b> |
|                  | Common – email address in Customer and Supplier master ..... | 3-1        |
|                  | Brief description of the enhancement.....                    | 3-1        |
|                  | New or changed software components.....                      | 3-1        |
|                  | Customer implication .....                                   | 3-2        |
|                  | Finance ACR – print invoices with linked receipts.....       | 3-2        |
|                  | Brief description of the enhancement.....                    | 3-2        |
|                  | New or changed software components.....                      | 3-2        |
|                  | Customer implication .....                                   | 3-2        |
|                  | Finance CMG – store payment files on client PC.....          | 3-2        |
|                  | Brief description of the enhancement.....                    | 3-2        |
|                  | New or changed software components.....                      | 3-2        |
|                  | Customer implication .....                                   | 3-2        |
|                  | Manufacturing ROU – text in Routing.....                     | 3-3        |
|                  | Brief description of the enhancement.....                    | 3-3        |

---

|   |     |
|---|-----|
| New or changed software components .....                          | 3-3 |
| Customer implication .....  | 3-3 |
| Transportation – Separate Transaction Type for Credit Notes ..... | 3-3 |
| Brief description of the enhancement.....                         | 3-3 |
| New or changed software components .....                          | 3-4 |
| Customer implication .....  | 3-4 |
| Baan IVc4 – other .....   | 3-4 |

---

---

## About this Guide

This document is an Installation and Deployment Guide that describes the contents of Service Pack 25 and how to install Service Pack 25 on Baan IVc4. This document is intended for Baan IVc4 installers and system administrators.

This document includes the following chapters:

Chapter 1, "Introduction," briefly describes Service Pack 25 for Baan IVc4.

Chapter 2, "To Install the Service Pack," describes how to install Service Pack 25.

Chapter 3, "Functional Enhancements and Important Solutions," describes the most important functional enhancements and important solutions of Service Pack 25.

### **Send us your comments**

We continually review and improve our documentation. Any remarks/requests for information concerning this document or topic are appreciated. Please e-mail your comments to [documentation@infor.com](mailto:documentation@infor.com).

In your e-mail, refer to the document code and title. More specific information will enable us to process feedback efficiently.

---





---

# Chapter 1

## Introduction

# 1

Service Pack 25 for Baan IVc4 is intended for users of Baan IVc4.

You can use this Service Pack to upgrade existing installations.

Service Pack 25 contains all bug fixes through May 12, 2008. In addition, Service Pack 25 contains a number of functional enhancements.

You can install the Service Pack by means of the PMC tool on the following hardware platforms:

- UNIX
- Microsoft Windows

You can use the tool to install individual solutions, which you can download from the Infor Baan Knowledge Base on the Infor365 Online Support Web site, or to install Service Packs.

The following table lists the extensions and languages for which the Service Pack is available:

| Extension                  | Code | Code      |             |            |            |
|----------------------------|------|-----------|-------------|------------|------------|
|                            |      | Dutch = 1 | English = 2 | German = 3 | French = 4 |
| Standard Baan IVc4         |      | X         | X           | X          | X          |
| Aerospace and Defense and0 | And0 |           | X           |            |            |
| Aerospace and Defense and1 | And1 |           | X           |            |            |

---

|                                       |      |   |   |   |   |
|---------------------------------------|------|---|---|---|---|
| Baan Connect Kit 1.1 / 1.2 / 1.3      | Bci0 | X | X | X | X |
| Controlling                           | Cnt0 | X | X | X | X |
| French localization                   | Fre0 |   | X |   | X |
| Italian localization                  | Itl0 |   | X |   |   |
| Supply Chain – Italian localization   | Its0 |   | X |   |   |
| Japanese localization                 | Jap0 |   | X |   |   |
| North American Automotive Solution    | Nas0 |   | X | X | X |
| Multicurrency                         | Mcr0 |   | X |   |   |
| Nordic localization                   | Nc20 |   | X |   |   |
| Netherlands localization              | Nl10 | X | X |   |   |
| Supply Chain – Controlling            | Sccl | X | X | X | X |
| Supply Chain                          | Sch1 | X | X | X | X |
| iCRM integration                      | Crm0 | X | X | X | X |
| Automotive Global Solution            | Ags0 | X | X | X | X |
| Automotive Global Solution release 2  | Ags2 |   | X | X |   |
| Aftermarket Service Parts Solution    | Ams0 |   | X |   |   |
| German Localization (on Standard)     | Ger0 |   |   | X |   |
| German Localization (on Supply Chain) | Scf0 |   |   | X |   |
| Finance Brush Up (on Standard)        | Fbu3 |   |   | X |   |
| Finance Brush Up (on AGS0)            | Fba3 |   |   | X |   |
| Finance Brush Up (on AGS2)            | F3a2 |   |   | X |   |

Availability of translations to other languages is published under solution number 229736 in the Infor Baan Knowledge Base on the Infor365 Online Support Web site.

## Contents

The Service Pack bundle contains the following files and folders:

- B40c4\_SP25 folder  
This folder contains all the files required to update the Baan IVc4 software. The folder contains the following files:
    - stb40c4\_25stnd  
Contains fixes for Tools.
    - spb40c4\_25stnd  
Contains fixes for the standard application software.
    - spb40c4\_25and0  
Contains fixes for the Aerospace and Defense 2.2c extension.
    - spb40c4\_25and1  
Contains fixes for the Aerospace and Defense and1 extension.
    - spb40c4\_25ags0  
Contains fixes for the Automotive Global Solution extension.
    - spb40c4\_25ags2  
Contains fixes for the Automotive Global Solution extension release 2.
    - spb40c4\_25ams0  
Contains fixes for the Aftermarket Service Parts Solution extension.
    - spb40c4\_25bci0  
Contains fixes for the Baan Connect Kit extension.
    - spb40c4\_25blg1  
Contains the fixes for the Belgian localization.
    - spb40c4\_25cnt0  
Contains fixes for the Controlling extension.
    - spb40c4\_25crm0  
Contains fixes for the iCRM integration extension.
    - spb40c4\_25fba3  
Contains fixes for the Finance Brush Up extension (on AGS0).
    - spb40c4\_25fbu3  
Contains fixes for the Finance Brush Up extension (on standard).
    - spb40c4\_25fre0  
Contains fixes for the French localization.
    - spb40c4\_25ger0  
Contains fixes for the German localization (on standard).
    - spb40c4\_25itl0  
Contains fixes for the Italian localization.
-

- spb40c4\_25its0  
Contains fixes for the Supply Chain - Italian localization.
- spb40c4\_25jap0  
Contains fixes for the Japanese localization.
- spb40c4\_25mcr0  
Contains fixes for the Multicurrency extension.
- spb40c4\_25nas0  
Contains fixes for the North American Automotive Solution extension.
- spb40c4\_25nc20  
Contains fixes for the Nordic localization.
- spb40c4\_25scc1  
Contains fixes for the Supply Chain-Controlling extension.
- spb40c4\_25scf0  
Contains fixes for the German localization (on Supply Chain).
- spb40c4\_25sch0  
Contains the first set of fixes for the Supply Chain extension.
- spb40c4\_25sch1  
Contains the second set of fixes for the Supply Chain extension.
- Documentation folder:  
The documentation folder of the Service Pack bundle contains the following documentation:
  - *Installation and Deployment Guide for Service Pack 25 (U9472A US)*
  - Release Notes folder with modified component and solved defect overviews, which includes the following:
    - Relnotes\_std.doc, which contains a textual description of solved defects for the standard application software.
    - Relnotes\_tools.doc, which contains a textual description of solved defects for the tools software.
    - Relnotes\_xxxx.doc, which contains a textual description of solved defects for the software of each of the extensions and localizations.
    - Componentlist\_xxxx.xls, which contains an overview of modified components.
    - Solutions\_xxxx.txt, which contains an enumeration of solution numbers included in the Service Pack.

The textual descriptions of solved defects and the overviews of modified components and solution numbers are created for each of the products: standard, tools, localization, or extension, in which xxxx denotes the relevant localization or extension.

---

The Release Notes documents with the textual descriptions of solved defects for each of the extensions and localizations only contain descriptions of those solutions that are specifically built in the related extension or localization. Solutions that are solved in the standard software or in a derived extension or localization and are ported to the related extension or localization are not included in the Release Notes document.



---

## Chapter 2

# To Install the Service Pack

# 2

### Pre-installation requirements

Before you can install Service Pack 25, you must have Service Pack 24 and earlier Service Packs for Baan IVc4 installed.

Before you install the tools part of the Service Pack, you must have porting set 6.1c.07.09 or a later release of the porting set installed. The porting set is not included in the Service Pack. Therefore, you must order the porting set separately, or download the porting set from solution 15219 in the Infor Baan Knowledge Base on the Infor365 Online Support Web site.

Before you install the Service Pack, you must first run the Convert to Runtime Data Dictionary (ttadv5215m000) session for the full range of package combinations, packages, and tables. Select all of the check boxes in this session.

---

The following table provides an indication of details such as the minimum disk space and time required to carry out a successful installation:

| <b>Product</b> | <b>Number of solutions</b> | <b>Uninstall (MB)</b> | <b>Install (MB)</b> | <b>Total (MB)</b> | <b>Installation Time (hh:mm)</b> |
|----------------|----------------------------|-----------------------|---------------------|-------------------|----------------------------------|
| Standard       | 138                        | 19.3                  | 23.0                | 42.3              | 0:08                             |
| Tools          | 27                         | 1.0                   | 1.9                 | 2.9               | 0:01                             |
| And0           | 62                         | 6.6                   | 9.6                 | 16.2              | 0:02                             |
| And1           | 82                         | 8.5                   | 12.6                | 21.1              | 0:03                             |
| Ags0           | 88                         | 12.9                  | 19.9                | 32.8              | 0:04                             |
| Ags2           | 92                         | 12.7                  | 20.2                | 32.9              | 0:03                             |
| Ams0           | 36                         | 7.3                   | 11.0                | 18.3              | 0:01                             |
| Bci0           | 18                         | 2.6                   | 3.6                 | 6.2               | 0:01                             |
| Blg1           | 15                         | 1.0                   | 2.6                 | 3.6               | 0:00                             |
| Cnt0           | 43                         | 4.7                   | 8.0                 | 12.7              | 0:01                             |
| Crm0           | 16                         | 1.8                   | 2.2                 | 4.0               | 0:00                             |
| Fre0           | 18                         | 1.0                   | 1.7                 | 2.7               | 0:00                             |
| Itl0           | 53                         | 6.3                   | 9.8                 | 16.1              | 0:02                             |
| Its0           | 57                         | 7.8                   | 11.9                | 19.7              | 0:02                             |
| Jap0           | 27                         | 2.8                   | 4.5                 | 7.3               | 0:01                             |
| Mcr0           | 103                        | 12.8                  | 16.7                | 29.5              | 0:04                             |
| Nas0           | 50                         | 9.0                   | 14.8                | 23.8              | 0:01                             |
| Nc20           | 26                         | 1.4                   | 1.8                 | 3.2               | 0:01                             |
| NI10           | 0                          | 0.0                   | 0.0                 | 0.0               | 0:00                             |
| Scc1           | 49                         | 7.1                   | 11.2                | 18.3              | 0:02                             |
| Sch0           | 97                         | 13.4                  | 21.0                | 34.4              | 0:03                             |
| Sch1           | 79                         | 10.7                  | 17.0                | 27.7              | 0:03                             |
| Fba3           | 15                         | 1.6                   | 2.1                 | 3.7               | 0:00                             |
| Fbu3           | 11                         | 1.3                   | 1.6                 | 2.9               | 0:00                             |
| Ger0           | 8                          | 0.4                   | 0.7                 | 1.1               | 0:00                             |



| Total | 1210 | 154.0 | 229.4 | 383.4 | 0:43 |
|-------|------|-------|-------|-------|------|
|-------|------|-------|-------|-------|------|

**Note:** The figures in this table are merely indicative. No rights can be derived from the table. The installation time strongly depends on factors such as the following:

- The operating system and database you use
- The number of solutions that are part of the current Service Pack that are already installed as individual solutions
- The size of the tables to be reconfigured
- Whether you save components during the installation process

The figures used in the previous table are based on an installation performed using the following configuration:

- Operating System: HP-UX 11.11
- CPU: 2
- Memory: 3 GB RAM
- Database: BISAM
- Other: flag 'Save Components' in PMC active.

**Note:** The German localization/Finance Brush Up extensions f3a2 and scf0 were not installed and the figures for these extensions are not included.

The Installation Time column represents the time to install the specified PMC patches. Scanning the patches, check to install for the patches and the convert to runtime data dictionary are not included in these figures.

A minimum of 1.5 megabyte (MB) disk space is required for the runtime software components in the Update VRC directory for the standard software.

This directory is the directory defined in the Maintain Directories of Software Components (ttadv1115m000) session. The required disk space for the runtime software components in the Update VRC directories for the extensions and localizations has not been measured. The expectation is that each extension or localization requires a maximum of less than 1 MB on average. The required disk space increases if B-languages are installed.

## To install the Service Pack

Before you install the Service Pack 25, first check if any last minute information is available about Service Pack 25 and the installation of this Service Pack. You can find this information in the Infor Baan Knowledge

Base on the Infor365 Online Support Web site under solution number 229735.

For the standard Baan IVc4 software, two dumps are created: one for Tools and one for the application. The Tools solutions are in a PMC dump called stb40c4\_25stnd, whereas the application solutions are in a dump called spb40c4\_25stnd. The reason for this is because the PMC dump for Tools must be scanned in the Base VRC for the standard software, but the components are actually installed in the unique tools VRC B40 c4. For Tools, you cannot have an Update VRC. Therefore, the Tools components are always imported in the unique Tools VRC B40 c4, which is the live VRC. You cannot have a test VRC for Tools.

During the installation of the Service Pack, you can specify the sequence of the Tools and applications installations. You can first install the Tools dump and later the application dumps, or first install the application dumps and later the Tools dump. No dependency exists between these dumps. For best results, Infor recommends that you install the Tools dump first, and then install the Application dumps, however, you can also choose to install the Application dumps first and then the Tools dump.

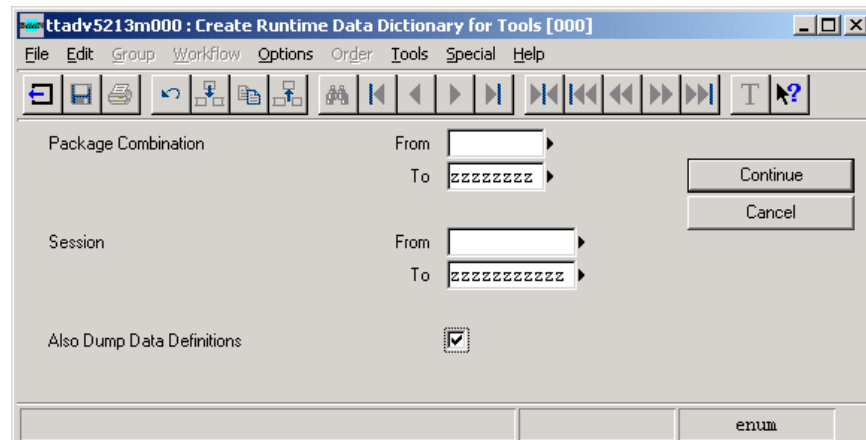
For best results, install Tools and applications at the same time, however, if required, you can choose to install applications and Tools at separate times.

## To install the Tools

To install the Tools part of Service Pack 25 for Baan IVc4, take the following steps:

- 1 [For UNIX users] Copy the file stb40c4\_25stnd from the B40c4\_SP25 folder of the CD-ROM to a temporary directory on the UNIX system. To copy the files, you must use a transfer protocol in binary mode. If you have the facility to mount a CD-ROM to your UNIX platform, transfer of files from the CD-ROM to the UNIX system is unnecessary. In this case, you can simply install directly from the CD-ROM. For information on how to mount a CD-ROM to your UNIX system, refer to the documentation from your hardware vendor.
  - 2 Scan the PMC dump stb40c4\_25stnd by means of the Scan Solution File (ttpmc2200m000) session. Select the **Overwrite** check box in this session.
  - 3 Make sure that all users now exit the environment in which you want to install the Service Pack.
  - 4 Run the Process Solutions (ttpmc2101m000) session to process the PMC dump stb40c4\_25. This session consists of two parts: the Check Solution to Install (ttpmc2203s000) session and the Install Solution (ttpmc2205s000) session.
-

- 5 In the Install Solution session, select the **Preinstallation Instructions Followed Up** check box, otherwise, the Service Pack will not install.
- 6 Start the Create Runtime Data Dictionary for Tools (ttadv5213m000) session for all package combinations. Select the **Also Dump Data Definitions** check box, as shown in the following figure:



- 7 Exit the bshell.
- 8 If Baan Tools components are loaded in shared memory, stop and restart the shared memory.
- 9 Restart the bshell.

- 10 Start the Patch Objects after Error Solving (ttiex3226m000) session, as shown in the following figure, for all Baan Tools objects:

ttiex3226m000 : Patch Objects after Error Solving [000]

File Edit Group Workflow Options Order Tools Special Help

Package tt

Objects From o zzzzzzzzzzzz To o zzzzzzzzzzzz

Patch also BAAN 4 a-application objects ☐

Package From To

Objects From o zzzzzzzzzzzz To o zzzzzzzzzzzz

Continue Cancel

- 11 If you use the ASCII help viewer, run the Create Runtime Help (ttadv5230m000) session for the tools VRC B40 c4 and the languages that you use. Select the check boxes as shown in the following figure:

ttadv5230m000 : Create Runtime Help [000]

File Edit Group Workflow Options Order Tools Special Help

Form 1 Form 2

Package From tt To tt

Version From B40 To B40

Release From c4 To c4

Customer From To

Language From 1 To 4

Continue Cancel

|              |                                     |                  |                                     |
|--------------|-------------------------------------|------------------|-------------------------------------|
| Domains      | <input checked="" type="checkbox"/> | Menus            | <input checked="" type="checkbox"/> |
| Tables       | <input checked="" type="checkbox"/> | Messages         | <input checked="" type="checkbox"/> |
| Table Fields | <input checked="" type="checkbox"/> | Questions        | <input checked="" type="checkbox"/> |
| Labels       | <input checked="" type="checkbox"/> | Sessions         | <input checked="" type="checkbox"/> |
| Forms        | <input checked="" type="checkbox"/> | Business Objects | <input checked="" type="checkbox"/> |
| Form Fields  | <input checked="" type="checkbox"/> | Reports          | <input checked="" type="checkbox"/> |

- 12 Exit and restart the bshell. The installation of the tools part of the Service Pack is ready.

If you do not want to continue with the installation of the application part of the Service Pack, all users can start to use the environment. If you do want to continue with the installation of the application part of the Service Pack, continue with the following steps.

## To install the applications

To install the applications part of Service Pack 25 for Baan IVc4, take the following steps:

- 1 [For UNIX users] Copy the files from the B40c4\_SP25 folder of the CD-ROM to a temporary directory on the UNIX system. To copy the files, you must use a transfer protocol in binary mode.

The size of the dumps in this folder is approximately 230 MB. You do not need to transfer all files. In Step 2, you can see which files are required for your software version.

If you have the facility to mount a CD-ROM to your UNIX platform, transfer of files from the CD-ROM to the UNIX system is unnecessary. In this case, you can install directly from the CD-ROM.

For information on how to mount a CD-ROM to your UNIX system, refer to the documentation from your hardware vendor.

- 2 Scan the PMC dumps by means of the Scan Solution File (ttpmc2200m000) session. In this session, you must select the **Overwrite** check box. The PMC dumps that you must scan depend on the extensions that you use in your package combinations.

You must always scan the PMC dump for the standard software (spb40c4\_25stnd). In addition, you must scan one or more PMC dumps, depending on the extension that you use, as shown in the following table:

| Extension                        | Code | PMC dumps needed |
|----------------------------------|------|------------------|
| Aerospace and Defense and0       | And0 | spb40c4_25and0   |
| Aerospace and Defense and1       | And1 | spb40c4_25and1   |
| Baan Connect Kit 1.1 / 1.2 / 1.3 | Bci0 | spb40c4_25bci0   |
| Controlling                      | Cnt0 | spb40c4_25cnt0   |
| French localization              | Fre0 | spb40c4_25fre0   |
| Italian localization             | Itl0 | spb40c4_25itl0   |

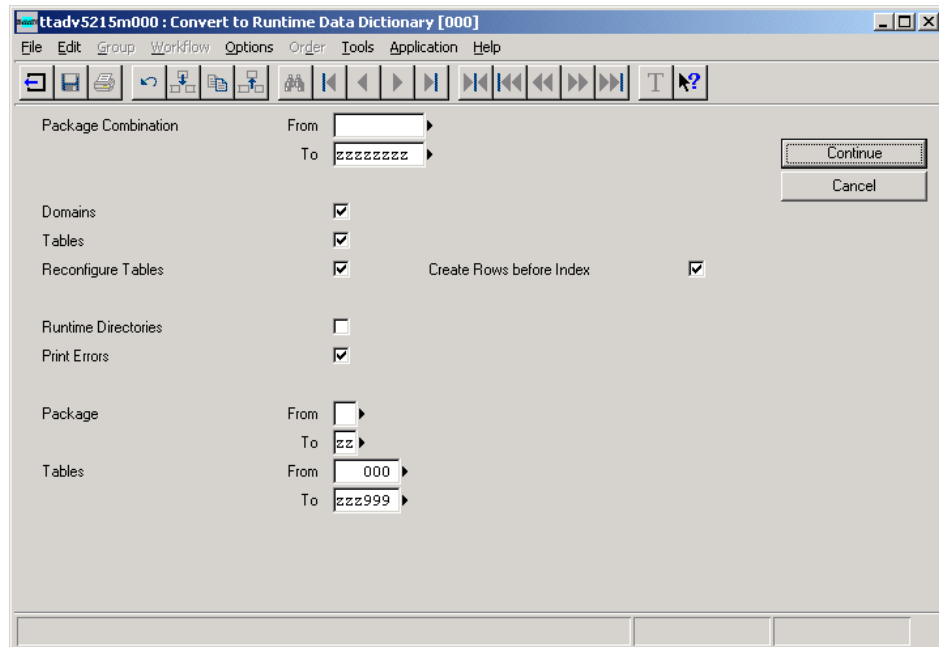
|                                      |      |  |
|--------------------------------------|------|--|
| Supply Chain – Italian localization  | Its0 | spb40c4_25its0<br>spb40c4_25sch0<br>spb40c4_25sch1                   |
| Japanese localization                | Jap0 | spb40c4_25jap0   |
| North American Automotive Solution   | Nas0 | spb40c4_25nas0<br>spb40c4_25sch0<br>spb40c4_25sch1                   |
| Multicurrency                        | Mcr0 | spb40c4_25mcr0   |
| Nordic localization                  | Nc20 | spb40c4_25nc20   |
| Netherlands localization             | NI10 | **) )  |
| Supply Chain – Controlling           | Scc1 | spb40c4_25cnt0<br>spb40c4_25sch0<br>spb40c4_25sch1<br>spb40c4_25scc1 |
| Supply Chain                         | Sch1 | spb40c4_25sch0<br>spb40c4_25sch1                                     |
| iCRM integration                     | Crm0 | spb40c4_25crm0   |
| Automotive Global Solution           | Ags0 | spb40c4_25ags0<br>spb40c4_25cnt0                                     |
| Automotive Global Solution release 2 | Ags2 | spb40c4_25ags2<br>spb40c4_25cnt0                                     |
| Aftermarket Service Parts Solution   | Ams0 | spb40c4_25ams0<br>spb40c4_25ags2<br>spb40c4_25cnt0                   |
| German Localization (on Standard)    | Ger0 | spb40c4_25ger0<br>spb40c4_25cnt0 *)                                  |

|                                       |      |  |
|---------------------------------------|------|--|
| German Localization (on Supply Chain) | Scf0 | spb40c4_25scf0<br>spb40c4_25cnt0<br>spb40c4_25sch0<br>spb40c4_25sch1<br>spb40c4_25scc1<br>spb40c4_25ger0 |
| Finance Brush Up (on Standard)        | Fbu3 | spb40c4_25fbu3<br>spb40c4_25cnt0 *)<br>spb40c4_25ger0  |
| Finance Brush Up (on AGS0)            | Fba3 | spb40c4_25fba3<br>spb40c4_25cnt0<br>spb40c4_25ags0   |
| Finance Brush Up (on AGS2)            | F3a2 | spb40c4_25cnt0<br>spb40c4_25ags2<br>spb40c4_25fba3 **)   |

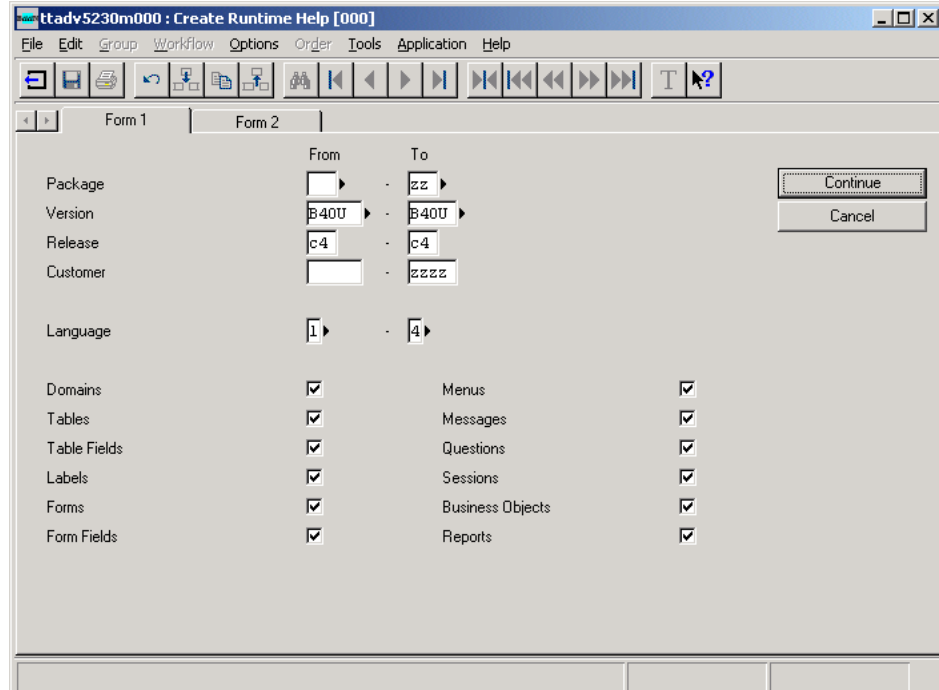
\*) **Note:** Installation of the cnt0 extension is not mandatory if you use the German localization ger0 or finance brush-up extension fbu3.

\*\*) **Note:** No PMC dumps are created for the nl10 and the f3a2 extensions, because no fixes have been made for these extensions during the Service Pack timeframe.

- 3 Make sure that all users now exit the environment in which you want to install the Service Pack.
- 4 Run the Process Solutions (ttpmc2101m000) session to process the PMC dumps that you scanned in Step 2. This session consists of two parts: the Check Solution to Install (ttpmc2203s000) session and the Install Solution (ttpmc2205s000) session.
- 5 In the Install Solution session, select the **Preinstallation Instructions Followed Up** check box, otherwise, the Service Pack will not install.
- 6 Start the Convert to Runtime Data Dictionary (ttadv5215m000) session for all package combinations. Select all of the check boxes in this session to reconfigure the tables, because some tables were modified for bug fixing.



- 7 Exit and restart the bshell.
- 8 If you use the ASCII help viewer, run the Create Runtime Help (ttadv5230m000) session for the languages and update VRCs that you use. Select the check boxes as shown in the following figure:



- 9 Exit and restart the bshell.



The installation of the Service Pack is complete. After you perform the post-installation procedure, users can begin to use the environment.

## Post-installation instructions

After you install the Service Pack, complete the following steps:

- 1 This step is only relevant if you use the Maintain Receipts via DDC (tdpur4120b000) session to maintain receipts through Function Server, and if you did not install solution 227450 before you installed the Service Pack:

Start the Query/Update Function Servers (tuddc1212m000) session and select the tdpur4120b000 Function Server. Select the Rewrite checkbox and start the process. For more information, refer to solution 227450.

- 2 The following correction programs are delivered for this Service Pack. To check whether you must run these correction programs, refer to the related solution texts:
  - Update Entries in tables tfcmg111, tfcmg112, and tfcmg110 (tfc09920m000). Solution 224963.
  - Update Integration Transactions (tdcor9140m000). Solution 226450.
  - Rebuild Integration Transactions for SSC DC-Shipments (tfc00006m000). Solution 225809 (ags0, ags2, sch1 extensions only).
  - Correct Amendment records (tdcor0940m000). Solution 229078 (and1 extension only).

## Source codes of PMC Service Packs

Solutions and Service Packs that Infor creates and installs through the PMC tool have the source code of modified components included. However, the source codes of program scripts, libraries, and functions are only installed if a previous version of the source code of the component exists in the environment in which the solution or Service Pack is installed.

For example, if a fix is produced for solution 71291 in the program script tdilc4202, the PMC dump for this solution contains the program script source and the program object.

This solution is installed at system X in the update VRC B40U\_c4\_std. Before you install the program script source, the PMC tool checks whether the program script source exists in the update VRC, or in a VRC that is in the derived-from structure for the update VRC.

---

If the program script source of tdilc4202 already exists, the new program script source and the program object are installed from the PMC dump of the solution. If the program script source is not found, only the program object is installed.

Before you begin the installation of a solution or Service Pack through PMC, Infor alliances or customers who need the source codes must make sure that the sources exist in the environment in which the solutions or Service Packs are installed.

---

## Chapter 3

# Functional Enhancements and Important Solutions

# 3

This chapter describes the most important functional enhancements and solutions for Service Pack 25. The following enhancements and important solutions are introduced:

- Common: email address in Customer and Supplier master.
- Finance ACR: print invoices with linked receipts.
- Finance CMG: store payment files on client PC.
- Manufacturing ROU: text in Routing.
- Transportation: Separate Transaction Type for Credit Notes.
- Baan IVc4: other.

### Common – email address in Customer and Supplier master

#### Brief description of the enhancement

A new field email address has been added to the Customer (tccom010) and Supplier (tccom020) tables.

#### New or changed software components

For a detailed overview of new or changed software components, refer to solution 227592 in the document componentlist\_std.

---

## Customer implication

You can begin to use this enhancement immediately.

## Finance ACR – print invoices with linked receipts

### Brief description of the enhancement

A new check box option **Print Payment/Receipt Link Documents** is provided in the Print Sales Invoices (tfacr2421m000) session. This new options allows you to print the linked receipts with the invoices.

### New or changed software components

For a detailed overview of new or changed software components, refer to solution 229022 in the document componentlist\_stnd.

## Customer implication

You can begin to use this enhancement immediately.

## Finance CMG – store payment files on client PC

### Brief description of the enhancement

A new option has been added to the Transfer Payments (tfcmg1260s000) session to copy the payment files to the local client PC.

### New or changed software components

For a detailed overview of new or changed software components, refer to solution 229743 in the document componentlist\_stnd.

## Customer implication

You can begin to use this enhancement immediately.

---

## Manufacturing ROU – text in Routing

### Brief description of the enhancement

Text manager has been enabled to allow texts to be added to Routing Headers in the Maintain Routing Codes by Item (Incl. RPT Data) (tirou1101m000) and Maintain Routing Codes by Item (tirou1102m000) sessions.

### New or changed software components

For a detailed overview of new or changed software components, refer to solution 227609 in the document componentlist\_std.

### Customer implication

You can begin to use this enhancement immediately.

## Transportation – Separate Transaction Type for Credit Notes

### Brief description of the enhancement

In the standard Transportation software, you can define a different Transaction Type for Credit Notes. This can be entered on the second form in the Maintain Transaction Types by Financial Company (trtcd0110m000) session. In the Maintain Invoicing Types (trics0130m000) session you can create an Invoicing Type for Credit Notes. To enable this, the field **Credit Note** on the first form must be switched to 'Yes'. This Invoicing Type can be used everywhere in the module Transportation. Whenever this Invoicing Type is used, the orders will be booked in Finance according to the corresponding Transaction Type.

This is a legal requirement for Belgium and has now been built into the standard software, so it can also enrich the functionality for customers in other countries.

---

## New or changed software components

For a detailed overview of new or changed software components, refer to solution 224562 in the document componentlist\_std.

## Customer implication

You can begin to use this enhancement immediately.

## Baan IVc4 – other

The following table lists the other minor functional modifications and optimizations in the Service Pack. For more details, refer to the detailed solution descriptions of the relevant solutions in the Release Notes documents in the Documentation folder.

| Area / Extension | Solution       | Description   |
|------------------|----------------|---|
| Finance CMG      | 225324, 225718 | IBAN check is now supported for Bosnia and Israel, according to the European Central Bank specification of IBAN.  |
| Finance GLD      | 224721         | A new report has been added to the Print Finalized Transactions by Ledger Account (tfgld1406m000) session. On this report, the transactions are sorted per fiscal year/period and per period ordered by Transaction Type and Document Number. |
| Finance GLD      | 227791         | A new session Create Standard Audit File - Tax - Portugal (tfgld1240m000) has been created. This session creates the Standard Audit File for Portugal in an XML format which can be sent to the Tax Authority.                                |
| Transportation   | 226182         | The tax period for storage orders can now also be determined using the invoice date.  |
| Tools            | 227880         | A new option is available to purge all print requests for one device in the Purge Device Queue (ttaad3221m000) session.   |

---

|                          |        |  |
|--------------------------|--------|--|
| Ags0/ags2 extension      | 226071 | Loading of boxes on pallets works now according to defined Renault-process CINDI in the Automatically create planned deliveries (tdssc0217m000) session.   |
| Ags0/ags2 extension      | 222922 | In case of Supply Chain ASN receipts and lot-controlled items, the lot number is retrieved from the incoming ASN lines and defaulted for the receipt lines in the Maintain Receipts (tdpur4120m000) session.   |
| Ags0/ags2 extension      | 227138 | The reconciliation process can now handle the reconciliation of one received SBI against several expected SBI for the same item in the Automatically reconcile self-billed invoices (tfsbi0205m000) session.   |
| Ags0/ags2 extension      | 227709 | The outgoing purchase and delivery schedules can be configured to contain the supplier part number and the description of the supplier part number.  |
| Ags2 extension           | 227515 | <p>The D.C. Shipment Line is now updated with the Sales Order Number in the Confirm Distribution Center Shipment (tdssc0133s000) session, independent if the D.C. Shipment is confirmed by contract or by advice note.</p> <p>Furthermore, a new display session has been created to show the Confirmed D.C. Shipment lines.</p> |
| ags0/ags2/sch1 extension | 229653 | The field 'Last Shipment Number' in the Shipping Log will be filled with the DC/ELP Shipment Reference or with the 'Advice Note' if that field has been transmitted in the EDI message.  |
| Blg1 localization        | 227324 | The Belgian tax number was enlarged from 9 to 10 digits. The 10 digit numbers are now supported in all sessions in the Belgian localization.   |
| Fre0 localization        | 224573 | French payment files ETEBAC Local and Foreign are made available while transferring French payments through the Transfer Payments (tfcmg1260s000) session.   |
| Nc20 localization        | 225889 | Payment Files "N, Norske Bank, Foreign and Domestic" are now compliant with Telepay Format Version 2.01.   |

---

|                          |  |
|--------------------------|--|
| Nc20 localization 226370 | A new session Print tax Specifications by Ledger Account (tfgld1435m000) has been added. This session prints tax base totals and tax totals per ledger account, tax country, and tax code combination. |
|--------------------------|--|

---