

Installation and Deployment Guide for Service Pack 24

Copyright © 2008 Infor

All rights reserved. The word and design marks set forth herein are trademarks and/or registered trademarks of Infor and/or related affiliates and subsidiaries. All rights reserved. All other trademarks listed herein are the property of their respective owners.

Important Notices

The material contained in this publication (including any supplementary information) constitutes and contains confidential and proprietary information of Infor.

By gaining access to the attached, you acknowledge and agree that the material (including any modification, translation or adaptation of the material) and all copyright, trade secrets and all other right, title and interest therein, are the sole property of Infor and that you shall not gain right, title or interest in the material (including any modification, translation or adaptation of the material) by virtue of your review thereof other than the non-exclusive right to use the material solely in connection with and the furtherance of your license and use of software made available to your company from Infor pursuant to a separate agreement ("Purpose").

In addition, by accessing the enclosed material, you acknowledge and agree that you are required to maintain such material in strict confidence and that your use of such material is limited to the Purpose described above.

Although Infor has taken due care to ensure that the material included in this publication is accurate and complete, Infor cannot warrant that the information contained in this publication is complete, does not contain typographical or other errors, or will meet your specific requirements. As such, Infor does not assume and hereby disclaims all liability, consequential or otherwise, for any loss or damage to any person or entity which is caused by or relates to errors or omissions in this publication (including any supplementary information), whether such errors or omissions result from negligence, accident or any other cause.

Trademark Acknowledgements

All other company, product, trade or service names referenced may be registered trademarks or trademarks of their respective owners.

Publication Information

Document code: U9453A US

Release: Baan Dimensions 6.0

Publication date: March 08

Table of Contents

Chapter 1	Introduction	1-1
	Contents.....	1-2
Chapter 2	To Install Service Pack 24	2-1
	Pre-installation requirements	2-1
	To install Service Pack 24.....	2-2
	Source codes of PMC service packs.....	2-4
	Derived-from VRC structure for Baan Dimensions 6.0 SP24 localizations.....	2-5
Chapter 3	Functional Enhancements and Important Solutions	3-1
	Finance Integration	3-1
	IDno Control	3-1
	Replenishment Order Control	3-2
	Transformation Order Control	3-2

About this Guide

This document describes the contents of Service Pack 24 and how to install Service Pack 24 on Baan Dimensions 6.0. It is intended for Baan IVc4 installers and system administrators.

The following chapters are included:

- Chapter 1, "Introduction", briefly describes Service Pack 24 for Baan Dimensions 6.0.
- Chapter 2, "To Install Service Pack 24", describes how to install Service Pack 24 for Baan Dimensions 6.0.
- Chapter 3, "Functional Enhancements and Important Solutions", describes the most important functional enhancements and solutions of Service Pack 24 for Baan Dimensions 6.0.

Send us your comments

We continually review and improve our documentation. Any remarks/requests for information concerning this document or topic are appreciated. Please e-mail your comments to documentation@infor.com.

In your e-mail, refer to the document code and title. More specific information will enable us to process feedback efficiently.

Chapter 1

Introduction

1

Service Pack 24 is intended for Baan Dimensions 6.0 users, and can only be used to upgrade existing Baan Dimensions 6.0 installations.

Service Pack 24 contains the following:

- All Baan IV bug fixes from May 15, 2007 through November 12, 2007 that needed to be built into the Baan Dimensions software.
- All Baan Dimensions bug fixes from May 19, 2007 through November 16, 2007.

The Service Pack can be installed by the PMC tool on the following hardware platforms:

- UNIX
 - Microsoft Windows
-

The following table shows for which extensions and languages Service Pack 24 is available:

Extension	Code	Dutch (1)	English (2)	German (3)	French (4)	Swedish (9)
Baan Dimensions 6.0 SP24	B40C_c4_m600	X	X	X	X	
Overlap Baan Dimensions 6.0 SP24 and Controlling (cnt0)	B40C_c4_mc06		X	X		
Overlap Baan Dimensions 6.0 SP24 and the French localization (fre0)	B40C_c4_mf06		X		X	
Overlap Baan Dimensions 6.0 SP24 and the Nordic localization (nc20)	B40C_c4_mn06		X			X

Translations for other languages are delivered upon request.

Contents

The service pack CD-ROM contains the following PMC dumps and files:

- spb40c4_24m600:
Contains fixes for the Baan Dimensions 6.0 extension software and the new functionality for the extension software.
- spb40c4_24mc06:
Contains fixes for the overlap with the Controlling extension.
- spb40c4_24mf06:
Contains fixes for the overlap with the French localization.
- spb40c4_24mn06:
Contains fixes for the overlap with the Nordic localization.
- Baan Dimensions 6.0 – Installation and Deployment Guide for Service Pack 24 (U9453A US).
- Overview of solution numbers (solutions_sp24_m600.txt).
- Overview of customization parts (customization_parts_sp24_m600.txt).

Pre-installation requirements

Before you install Service Pack 24, the following pre-installation requirements are applicable:

- spb40c4_24m600:
 - All service packs up to and including spb40c4_24stnd
 - All service packs up to and including spb40c4_23m600

 - spb40c4_24mc06:
 - All service packs up to and including spb40c4_24stnd
 - All service packs up to and including spb40c4_24cnt0
 - All service packs up to and including spb40c4_24m600
 - All service packs up to and including spb40c4_23mc06

 - spb40c4_24mf06:
 - All service packs up to and including spb40c4_24stnd
 - All service packs up to and including spb40c4_24fre0
 - All service packs up to and including spb40c4_24m600
 - All service packs up to and including spb40c4_23mf06
-

- spb40c4_24mn06:
 - All service packs up to and including spb40c4_24stnd
 - All service packs up to and including spb40c4_24nc20
 - All service packs up to and including spb40c4_24m600
 - All service packs up to and including spb40c4_23mn06

Ensure sufficient free disk space is available; to install Service Pack 24, you need at least 500 MB. The required space for the dimensions data depends on the database management system that you run.

Note

Ensure a backup of the \$BSE environment and data is available. If you do not have a backup, before you start the installation procedure, create a backup.

To install Service Pack 24

To install Service Pack 24 for Baan Dimensions 6.0, complete the following steps:

Copy and scan Service Pack 24

To copy and scan Service Pack 24, complete the following steps:

- 1 Copy the files to the type of system on which you work:

UNIX users:

Copy the files from the CD-ROM to a temporary subfolder on your local system. To transfer the data from the temporary subfolder to a temporary subdirectory in the Baan root directory, such as \${BSE}/tmp/dumps, use FTP in binary mode.

Windows NT users:

Copy the files from the CD-ROM to a temporary subfolder in the Baan root directory, such as e:\baan\tmp\dumps.

- 2 Ensure you install the solutions of Service Pack 24 in the same update VRC used for Service Pack 23.

If Infor alliances or customers want to upgrade customizations to the level of Service Pack 24, they can install Service Pack 24 in a separate update VRC. To do so, Infor alliances or customers must manually create a new Update

VRC in PMC and use the Copy Solution Registry to Derived Update VRC (ttpmc2290m000) session. After using this session, solutions cannot be uninstalled; therefore, it is recommended to install the solutions in the same update VRC used for Service Pack 23.

- 3 Scan the PMC dumps with the Scan Solution File (ttpmc2200m000) session. Always scan the PMC dump for the Baan Dimensions 6.0 SP24 extension software (spb40c4_24m600). Depending on the extensions used in your package combinations, scan one or more of the following PMC dumps:
 - For the overlap with Controlling: spb40c4_24mc06.
 - For the overlap with the French localization: spb40c4_24mf06.
 - For the overlap with the Nordic localization: spb40c4_24mn06.

For more information, refer to “Derived-from VRC structure for Baan Dimensions 6.0 SP24 localizations” in this chapter.

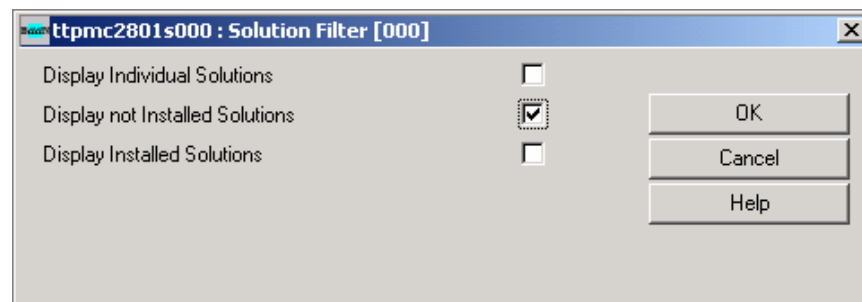
Install Service Pack 24

To install Service Pack 24, complete the following steps:

- 1 In the Process Solutions (ttpmc2101m000) session, process the PMC dumps you copied and scanned in the previous process.

Note

If you process the solution in the Process Solutions (ttpmc2101m000) session, click **Filter** and change the settings as shown in the following figure. Only the spb40c4_24m600 solution appears.



- 2 For the 40Ccm600 package combination and all derived package combinations, run the Create Runtime Data Dictionary (ttadv5210m000) session.
- 3 For all the B40C_c4_m600 packages, run the Create Runtime Data Dictionary (Forms and Menus) (ttadv5214m000) session.
- 4 For all the B40C_c4_m600 packages, run the Create Runtime Help (ttadv5230m000) session.
- 5 To create tables for all companies on B40C_c4_m600, run the Create Tables (ttaad4230m000) session.

Source codes of PMC service packs

Solutions and service packs created by Infor and installed through the PMC tool include the source code of modified components. The source codes of program scripts, libraries, and functions are only installed if a previous version of the source code of the component exists in the environment in which the solution or service pack is installed.

For example, if a fix is created for solution 71291 in the program script `tdilc4202`, the PMC dump for this solution contains the program script source and the program object.

This solution is installed at system X in the update VRC `B40U_c4_stnd`. Before you install the program script source, the PMC tool checks whether the program script source exists in the update VRC or in a VRC in the derived-from structure for the update VRC.

If the program script source of `tdilc4202` already exists, the new program script source and the program object are installed from the PMC dump of the solution. If the program script source is not found, only the program object is installed.

Before you install a solution or service pack through PMC, Infor alliances or customers who need the source codes must ensure the sources exist in the environment in which the solutions or Service Packs are installed.

Derived-from VRC structure for Baan Dimensions 6.0 SP24 localizations

Overlap with the Controlling (cnt0) extension



B40_c4



B40U_c4_stnd VRC for patches and solutions on Baan IVc4. Ensure you have installed Service Pack 24 in this VRC.



B40L_c4_cnt0



B40U_c4_cnt0 VRC for patches and solutions on the Controlling (cnt0) extension. Ensure you have installed Service Pack 24 in this extension VRC.



B40C_c4_m600 VRC that contains the initial Baan Dimensions 6.0 extension software, patches, and solutions. Ensure you have installed Service Pack 24 (spb40c4_24m600) in this extension VRC.

B40C_c4_mc06 VRC with overlap between Baan Dimensions 6.0 and the Controlling (cnt0) extension. You must install the Service Pack 24 overlap (spb40c4_24mc06) in this overlap VRC.

Overlap with the French (fre0) localization

**B40_c4****B40U_c4_stnd** VRC for patches and solutions on Baan IVc4. Ensure you have installed Service Pack 24 in this VRC.**B40L_c4_fre0****B40U_c4_fre0** VRC for patches and solutions on the French (fre0) localization. Ensure you have installed Service Pack 24 in this localization VRC.**B40C_c4_m600** VRC that contains the initial Baan Dimensions 6.0 extension software, patches, and solutions. Ensure you have installed Service Pack 24 (spb40c4_24m600) in this extension VRC.**B40C_c4_mf06** VRC with overlap between Baan Dimensions 6.0 and the French (fre0) localization. You must install the Service Pack 24 overlap (spb40c4_24mf06) in this overlap VRC.

Overlap with the Nordic (nc20) localization

**B40_c4****B40U_c4_stnd** VRC for patches and solutions on Baan IVc4. Ensure you have installed Service Pack 24 in this VRC.**B40L_c4_nc20****B40U_c4_nc20** VRC for patches and solutions on the Nordic (nc20) localization. Ensure you have installed Service Pack 24 in this localization VRC.**B40C_c4_m600** VRC that contains the initial Baan Dimensions 6.0 extension software, patches, and solutions. Ensure you have installed Service Pack 24 (spb40c4_24m600) in this extension VRC.**B40C_c4_mn06** VRC with overlap between Baan Dimensions 6.0 and the Nordic (nc20) localization. You must install the Service Pack 24 overlap (spb40c4_24mn06) in this overlap VRC.

Chapter 3

Functional Enhancements and Important Solutions

3

This chapter describes the most important functional enhancements and solutions for Service Pack 24. Because some solutions affect the current working of the software, note the following points:

Finance Integration

Solution 221093

When using the Find option and the transaction origin is 'Transformation Order', you can zoom on field 'Order' in session "Display Integration Transactions by Project / Order" (tfgld4510m000). On zooming, session "Display Transformation Orders" (tdmdm3510s000) is started.

Solution 222203

When the production start date of a transformation order is later than the transaction date of an integration transaction for that transformation order, the integration transaction will be archived/deleted in session "Archive and Purge Integration Transactions" (tfgld4210m000).

IDno Control

Solution 224907

A Zoom option to session "Display Project List" (tipcs2502s000) has been added to field 'Project' in session "Enter IDnos" (tdlra0110m/s000).

Replenishment Order Control

Solution 221351

A new parameter 'Use Standard Locations in RPL' has been added to session "Maintain Dimension Parameters for Distribution" (tdlra0100m100).

When this parameter is 'Yes', the receipt location in the destination warehouse of a replenishment order will be filled with the preferred standard location for the concerning item, warehouse, and dimension set as defined in session "Maintain Standard Locations by Dimension Set" (tdmdm0121m000).

When this parameter is 'No' (the default value) the receipt location in the destination warehouse of a replenishment order will be left empty, which reflects the current situation.

In both situations, the user can maintain the receipt location of the IDno through session "Maintain Replenishment Order Receipts" (tdrpl0122m000) when this session is part of the replenishment procedure.

Transformation Order Control

Solution 221441

When the dimension set of a zero TRO output IDno is changed in session "Maintain Transformation Order Details" (tdmdm3115s000), the receipt location will be filled with the preferred standard location for the concerning item, output warehouse, and dimension set as defined in session "Maintain Standard Locations by Dimension Set" (tdmdm0121m000).

Solution 222560

In session "Maintain First Free Numbers" (tcmcs0147m000), you can specify a default financial company for Transformation Order series.