



►► Baan IVc4

Installation and Deployment Guide for SP22

© Copyright 2007 Infor Global Solutions Technology GmbH and/or its affiliates and subsidiaries

All rights reserved. The word and design marks set forth herein are trademarks and/or registered trademarks of Infor Global Solutions Technology GmbH and/or its affiliates and subsidiaries. All rights reserved. All other trademarks listed herein are the property of their respective owners.

Important Notices

The material contained in this publication (including any supplementary information) constitutes and contains confidential and proprietary information of Infor Global Solutions.

By gaining access to the attached, you acknowledge and agree that the material (including any modification, translation or adaptation of the material) and all copyright, trade secrets and all other right, title and interest therein, are the sole property of Infor Global Solutions and that you shall not gain right, title or interest in the material (including any modification, translation or adaptation of the material) by virtue of your review thereof other than the non-exclusive right to use the material solely in connection with and the furtherance of your license and use of software made available to your company from Infor Global Solutions pursuant to a separate agreement ("Purpose").

In addition, by accessing the enclosed material, you acknowledge and agree that you are required to maintain such material in strict confidence and that your use of such material is limited to the Purpose described above.

Although Infor Global Solutions has taken due care to ensure that the material included in this publication is accurate and complete, Infor Global Solutions cannot warrant that the information contained in this publication is complete, does not contain typographical or other errors, or will meet your specific requirements. As such, Infor Global Solutions does not assume and hereby disclaims all liability, consequential or otherwise, for any loss or damage to any person or entity which is caused by or relates to errors or omissions in this publication (including any supplementary information), whether such errors or omissions result from negligence, accident or any other cause.

Trademark Acknowledgements

All other company, product, trade or service names referenced may be registered trademarks or trademarks of their respective owners.

Publication Information

Document code: U9192A US

Release: Baan IVc4

Publication date: February 07

Table of Contents

Chapter 1	Introduction.....	1-1
	Contents	1-3
Chapter 2	To Install the Service Pack	2-1
	Preinstallation requirements	2-1
	To install the Service Pack.....	2-4
	To install the Tools.....	2-4
	To install the applications.....	2-7
	Post-installation instructions	2-12
	Source codes of PMC Service Packs	2-13
Chapter 3	Functional Enhancements and Important Solutions	3-1
	Webtop: size of the text editor	3-1
	Brief description of the enhancement.....	3-1
	New or changed software components.....	3-2
	Customer implication.....	3-2
	Ags0/ags2 extensions: Support of Renault CINDI process.....	3-2
	Brief description of the enhancement.....	3-2
	New or changed software components.....	3-2
	Customer implication.....	3-3
	Ags0/ags2 extensions: Parent package number.....	3-3
	Brief description of the enhancement.....	3-3
	New or changed software components.....	3-3

Customer implication.....3-3

Ags0/ags2 extensions: Internal Dock information3-4

Brief description of the enhancement.....3-4

New or changed software components3-4

Customer implication.....3-4

Baan IVc4: Other3-4

About this Guide

This document is an Installation and Deployment Guide that describes the contents of Service Pack 22 and how to install Service Pack 22 on Baan IVc4. This document is intended for Baan IVc4 installers and system administrators.

This document includes the following chapters:

Chapter 1, "Introduction," briefly describes Service Pack 22 for Baan IVc4.

Chapter 2, "To Install the Service Pack," describes how to install Service Pack 22.

Chapter 3, "Functional Enhancements and Important Solutions," describes the most important functional enhancements and important solutions of Service Pack 22.

Send us your comments

We continually review and improve our documentation. Any remarks/requests for information concerning this document or topic are appreciated. Please e-mail your comments to documentation@infor.com.

In your e-mail, refer to the document number and title. More specific information will enable us to process feedback efficiently.

Service Pack 22 for Baan IVc4 is intended for users of Baan IVc4.

You can use this Service Pack to upgrade existing installations.

Service Pack 22 contains all bug fixes through November 13, 2006. In addition, Service Pack 22 contains a number of functional enhancements.

You can install the Service Pack by means of the PMC tool on the following hardware platforms:

- UNIX
- Microsoft Windows

You can use the tool to install individual solutions, which you can download from the SSA One Point Support Web site, or to install Service Packs.

The following table lists the extensions and languages for which the Service Pack is available:

Extension	Code				
		Dutch = 1	English = 2	German = 3	French = 4
Standard Baan IVc4		X	X	X	X
Aerospace and Defense and0	And0		X		

Aerospace and Defense and1	And1	X			
Baan Connect Kit 1.1 / 1.2 / 1.3	Bci0	X	X	X	X
Controlling	Cnt0	X	X	X	X
French localization	Fre0	X			X
Italian localization	Itl0	X			
Supply Chain – Italian localization	Its0	X			
Japanese localization	Jap0	X			
North American Automotive Solution	Nas0	X	X	X	
Multicurrency	Mcr0	X			
Nordic localization	Nc20	X			
Netherlands localization	NI10	X	X		
Supply Chain – Controlling	Sccl	X	X	X	X
Supply Chain	Sch1	X	X	X	X
iCRM integration	Crm0	X	X	X	X
Automotive Global Solution	Ags0	X	X	X	X
Automotive Global Solution release 2	Ags2	X	X		
Aftermarket Service Parts Solution	Ams0	X			
German Localization (on Standard)	Ger0			X	
German Localization (on Supply Chain)	Scf0			X	
Finance Brush Up (on Standard)	Fbu3			X	
Finance Brush Up (on AGS0)	Fba3			X	
Finance Brush Up (on AGS2)	F3a2			X	

Availability of translations to other languages is published under solution number 215965 on the Infor One Point Support Web site.

Contents

The Service Pack CD-ROM contains the following files and folders:

- B40c4_SP22 folder
This folder contains all the files required to update the Baan IVc4 software. The folder contains the following files:
 - stb40c4_22stnd
Contains fixes for Tools.
 - spb40c4_22stnd
Contains fixes for the standard application software.
 - spb40c4_22and0
Contains fixes for the Aerospace and Defense 2.2c extension.
 - spb40c4_22and1
Contains fixes for the Aerospace and Defense and1 extension.
 - spb40c4_22ags0
Contains fixes for the Automotive Global Solution extension.
 - spb40c4_22ags2
Contains fixes for the Automotive Global Solution extension release 2.
 - spb40c4_22ams0
Contains fixes for the Aftermarket Service Parts Solution extension.
 - spb40c4_22bci0
Contains fixes for the Baan Connect Kit extension.
 - spb40c4_22cnt0
Contains fixes for the Controlling extension.
 - spb40c4_22crm0
Contains fixes for the iCRM integration extension.
 - spb40c4_22fba3
Contains fixes for the Finance Brush Up extension (on AGS0).
 - spb40c4_22fbu3
Contains fixes for the Finance Brush Up extension (on standard).
 - spb40c4_22fre0
Contains fixes for the French localization.
 - spb40c4_22ger0
Contains fixes for the German localization (on standard).

- spb40c4_22itl0
Contains fixes for the Italian localization.
- spb40c4_22its0
Contains fixes for the Supply Chain - Italian localization.
- spb40c4_22jap0
Contains fixes for the Japanese localization.
- spb40c4_22mcr0
Contains fixes for the Multicurrency extension.
- spb40c4_22nas0
Contains fixes for the North American Automotive Solution extension.
- spb40c4_22nc20
Contains fixes for the Nordic localization.
- spb40c4_22nl10
Contains fixes for the Netherlands localization.
- spb40c4_22scc1
Contains fixes for the Supply Chain-Controlling extension.
- spb40c4_22scf0
Contains fixes for the German localization (on Supply Chain).
- spb40c4_22sch0
Contains the first set of fixes for the Supply Chain extension.
- spb40c4_22sch1
Contains the second set of fixes for the Supply Chain extension.
- Documentation folder:
The documentation folder of the Service Pack CD-ROM contains the following documentation:
 - *Installation and Deployment Guide for Service Pack 22 (U9192A US)*
 - Release Notes folder with modified component and solved defect overviews, which includes the following:
 - Relnotes_stnd.doc, which contains a textual description of solved defects for the standard application software.
 - Relnotes_tools.doc, which contains a textual description of solved defects for the tools software.
 - Relnotes_xxxx.doc, which contains a textual description of solved defects for the software of each of the extensions and localizations.

- Componentlist_xxxx.xls, which contains an overview of modified components.
- Solutions_xxxx.txt, which contains an enumeration of solution numbers included in the Service Pack.

The textual descriptions of solved defects and the overviews of modified components and solution numbers are created for each of the products: standard, tools, localization, or extension, in which xxxx denotes the relevant localization or extension.

The Release Notes documents with the textual descriptions of solved defects for each of the extensions and localizations are now organized differently as compared to Service Pack 19. The Release Notes documents only contain descriptions of those solutions that are specifically built in the related extension or localization. Solutions that are solved in the standard software or in a derived extension or localization and are ported to the related extension or localization are not included in the Release Notes document.

Chapter 2

To Install the Service Pack

2

Preinstallation requirements

Before you can install Service Pack 22, you must have Service Pack 21 and earlier Service Packs for Baan IVc4 installed.

Before you install the tools part of the Service Pack, you must have porting set 6.1c.07.08 or a later release of the porting set installed. The porting set is not included in the Service Pack. Therefore, you must order the porting set separately, or download the porting set from solution 15219 on the Infor One Point Support Web site.

Before you install the Service Pack, you must first run the Convert to Runtime Data Dictionary (ttadv5215m000) session for the full range of package combinations, packages, and tables. Select all of the check boxes in this session.

The following table provides an indication of details such as the minimum disk space and time required to carry out a successful installation:

Product	Number of solutions	Uninstall (MB)	Install (MB)	Total (MB)	Installation Time (hh:mm)
Standard	240	37.4	46.8	84.2	0:08
Tools	39	1.2	3.1	4.3	0:01
And0	137	22.7	30.7	53.4	0:03
And1	173	26.3	37.1	63.4	0:04
Ags0	145	26.4	35.6	62.0	0:04
Ags2	148	25.3	33.8	59.1	0:04
Ams0	71	9.6	14.8	24.4	0:01
Bci0	36	3.4	6.7	10.1	0:02
Cnt0	83	9.3	15.6	24.9	0:02
Crm0	40	3.6	6.1	9.7	0:01
Fre0	19	1.2	2.1	3.3	0:00
Itl0	87	13.9	18.4	32.3	0:02
Its0	92	16.0	21.9	37.9	0:02
Jap0	45	7.6	10.9	18.5	0:01
Mcr0	165	28.3	34.7	63.0	0:04
Nas0	68	10.5	17.5	28.0	0:02
Nc20	30	5.3	6.9	12.2	0:01
NI10	1	0.1	0.1	0.2	0:00
Scc1	77	10.9	18.9	29.8	0:02
Sch0	163	28.4	38.4	66.8	0:04
Sch1	144	24.5	31.8	56.3	0:03
Fba3	22	4.8	5.3	10.1	0:01

Fbu3	13	3.5	4.0	7.5	0:00
Ger0	15	1.7	2.0	3.7	0:00
Total	2053	321.9	443.2	765.1	0:52

Note: The figures in this table are merely indicative. No rights can be derived from the table. The installation time strongly depends on factors such as the following:

- The operating system and database you use
- The number of solutions that are part of the current Service Pack that are already installed as individual solutions
- The size of the tables to be reconfigured
- Whether you save components during the installation process

The figures used in the previous table are based on an installation performed using the following configuration:

- Operating System: HP-UX 11.11
- CPU: 2
- Memory: 3 GB RAM
- Database: BISAM
- Other: flag 'Save Components' in PMC active.

Note: The German localization/Finance Brush Up extensions f3a2 and scf0 were not installed and the figures for these extensions are not included.

The Installation Time column represents the time to install the specified PMC patches. Scanning the patches, check to install for the patches and the convert to runtime data dictionary are not included in these figures.

A minimum of 1 megabyte (MB) disk space is required for the runtime software components in the Update VRC directory for the standard software.

This directory is the directory defined in the Maintain Directories of Software Components (ttadv1115m000) session. The required disk space for the runtime software components in the Update VRC directories for the extensions and localizations has not been measured. The expectation is that each extension or localization requires a maximum of less than 1 MB on average. The required disk space increases if B-languages are installed.

To install the Service Pack

Before you install the Service Pack 22, first check if any last minute information is available about Service Pack 22 and the installation of this Service Pack. You can find this information on the Infor One Point Support Web site under solution number 215964.

For the standard Baan IVc4 software, two dumps are created: one for Tools and one for the application. The Tools solutions are in a PMC dump called stb40c4_22stnd, whereas the application solutions are in a dump called spb40c4_22stnd. The reason for this is because the PMC dump for Tools must be scanned in the Base VRC for the standard software, but the components are actually installed in the unique tools VRC B40 c4. For Tools, you cannot have an Update VRC. Therefore, the Tools components are always imported in the unique Tools VRC B40 c4, which is the live VRC. You cannot have a test VRC for Tools.

During the installation of the Service Pack, you can specify the sequence of the Tools and applications installations. You can first install the Tools dump and later the application dumps, or first install the application dumps and later the Tools dump. No dependency exists between these dumps. For best results, Infor recommends that you install the Tools dump first, and then install the Application dumps, however, you can also choose to install the Application dumps first and then the Tools dump.

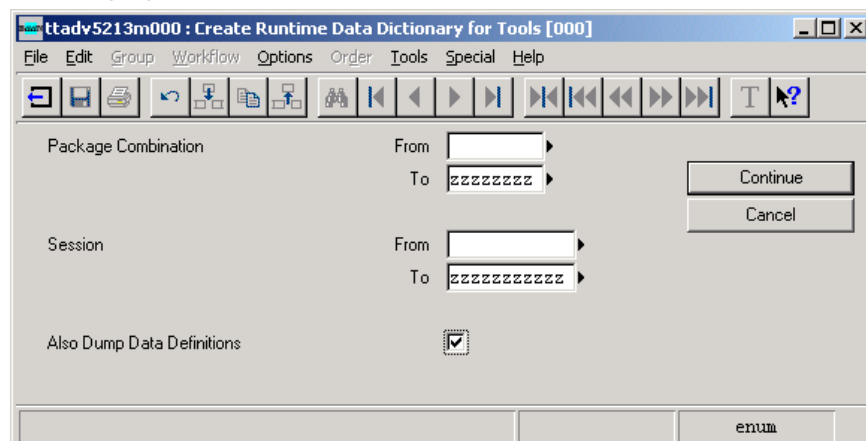
For best results, install Tools and applications at the same time, however, if required, you can choose to install applications and Tools at separate times.

To install the Tools

To install the Tools part of Service Pack 22 for Baan IVc4, take the following steps:

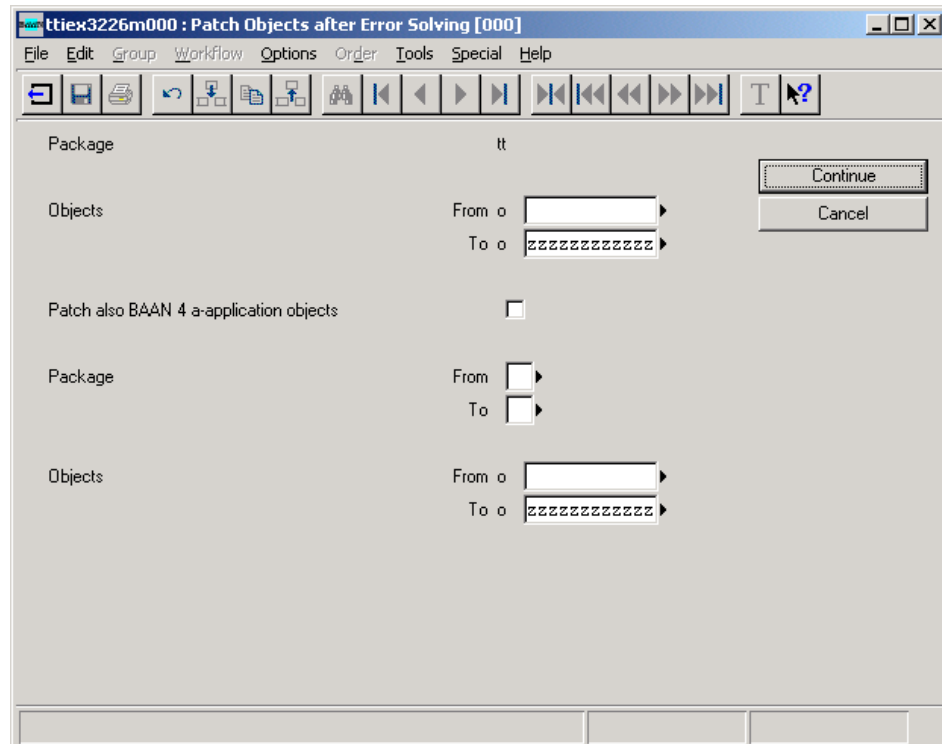
- 1 [For UNIX users] Copy the file stb40c4_22stnd from the B40c4_SP22 folder of the CD-ROM to a temporary directory on the UNIX system. To copy the files, you must use a transfer protocol in binary mode. If you have the facility to mount a CD-ROM to your UNIX platform, transfer of files from the CD-ROM to the UNIX system is unnecessary. In this case, you can simply install directly from the CD-ROM. For information on how to mount a CD-ROM to your UNIX system, refer to the documentation from your hardware vendor.
- 2 Scan the PMC dump stb40c4_22stnd by means of the Scan Solution File (ttpmc2200m000) session.

- 3 Select the **Overwrite** check box.
- 4 Make sure that all users now exit the environment in which you want to install the Service Pack.
- 5 Run the Process Solutions (ttpmc2101m000) session to process the PMC dump stb40c4_22. This session consists of two parts: the Check Solution to Install (ttpmc2203s000) session and the Install Solution (ttpmc2205s000) session.
- 6 In the Install Solution session, select the **Preinstallation Instructions Followed Up** check box, otherwise, the Service Pack will not install.
- 7 Start the Create Runtime Data Dictionary for Tools (ttadv5213m000) session for all package combinations.
- 8 Select the **Also Dump Data Definitions** check box, as shown in the following figure:



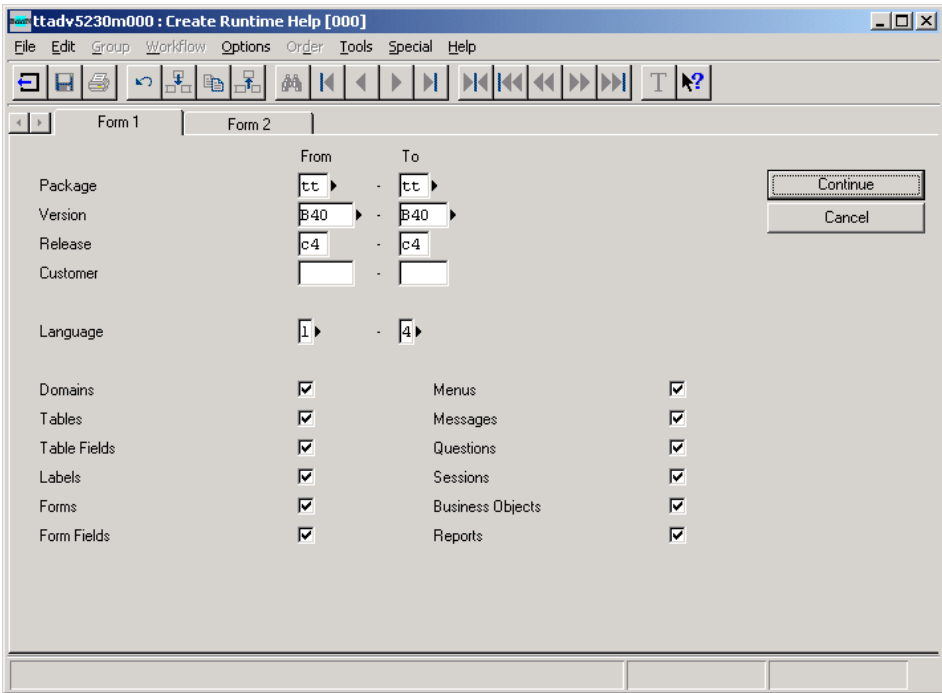
- 9 Exit the bshell.
- 10 If Baan Tools components are loaded in shared memory, stop and restart the shared memory.
- 11 Restart the bshell.

- 12 Start the Patch Objects after Error Solving (ttiex3226m000) session, as shown in the following figure, for all Baan Tools objects:



- 13 If you use the ASCII help viewer, run the Create Runtime Help (ttadv5230m000) session for the tools VRC B40 c4 and the languages that you use.

14 Select the check boxes as shown in the following figure:



15 Exit and restart the bshell. The installation of the tools part of the Service Pack is ready.

If you do not want to continue with the installation of the application part of the Service Pack, all users can start to use the environment. If you do want to continue with the installation of the application part of the Service Pack, continue with the following steps.

To install the applications

To install the applications part of Service Pack 22 for Baan IVc4, take the following steps:

- 1 [For UNIX users] Copy the files from the B40c4_SP22 folder of the CD-ROM to a temporary directory on the UNIX system. To copy the files, you must use a transfer protocol in binary mode.

The size of the dumps in this folder is approximately 445 MB. You do not need to transfer all files. In Step 2, you can see which files are required for your software version.

If you have the facility to mount a CD-ROM to your UNIX platform, transfer of files from the CD-ROM to the UNIX system is unnecessary. In this case, you can install directly from the CD-ROM.

For information on how to mount a CD-ROM to your UNIX system, refer to the documentation from your hardware vendor.

- 2 Scan the PMC dumps by means of the Scan Solution File (ttpmc2200m000) session. In this session, you must select the **Overwrite** check box. The PMC dumps that you must scan depend on the extensions that you use in your package combinations.

You must always scan the PMC dump for the standard software (spb40c4_22stnd). In addition, you must scan one or more PMC dumps, depending on the extension that you use, as shown in the following table:

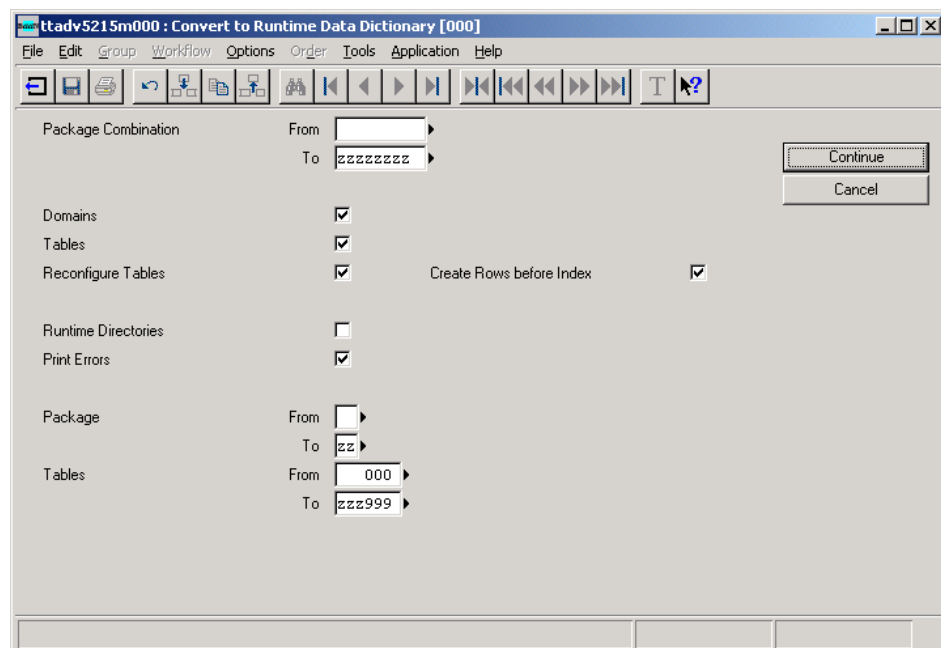
Extension	Code	PMC dumps needed
Aerospace and Defense and0	And0	spb40c4_22and0
Aerospace and Defense and1	And1	spb40c4_22and1
Baan Connect Kit 1.1 / 1.2 / 1.3	Bci0	spb40c4_22bci0
Controlling	Cnt0	spb40c4_22cnt0
French localization	Fre0	spb40c4_22fre0
Italian localization	Itl0	spb40c4_22itl0
Supply Chain – Italian localization	Its0	spb40c4_22its0 spb40c4_22sch0 spb40c4_22sch1
Japanese localization	Jap0	spb40c4_22jap0
North American Automotive Solution	Nas0	spb40c4_22nas0 spb40c4_22sch0 spb40c4_22sch1
Multicurrency	Mcr0	spb40c4_22mcr0
Nordic localization	Nc20	spb40c4_22nc20
Netherlands localization	NI10	spb40c4_22nl10

Supply Chain – Controlling	Scc1	spb40c4_22cnt0 spb40c4_22sch0 spb40c4_22sch1 spb40c4_22scc1
Supply Chain	Sch1	spb40c4_22sch0 spb40c4_22sch1
iCRM integration	Crm0	spb40c4_22crm0
Automotive Global Solution	Ags0	spb40c4_22ags0 spb40c4_22cnt0
Automotive Global Solution release 2	Ags2	spb40c4_22ags2 spb40c4_22cnt0
Aftermarket Service Parts Solution	Ams0	spb40c4_22ams0 spb40c4_22ags2 spb40c4_22cnt0
German Localization (on Standard)	Ger0	spb40c4_22ger0 spb40c4_22cnt0 *)
German Localization (on Supply Chain)	Scf0	spb40c4_22scf0 spb40c4_22cnt0 spb40c4_22sch0 spb40c4_22sch1 spb40c4_22scc1 spb40c4_22ger0
Finance Brush Up (on Standard)	Fbu3	spb40c4_22fbu3 spb40c4_22cnt0 *) spb40c4_22ger0
Finance Brush Up (on AGS0)	Fba3	spb40c4_22fba3 spb40c4_22cnt0 spb40c4_22ags0

Finance Brush Up (on AGS2)	F3a2	spb40c4_22f3a2
		spb40c4_22cnt0
		spb40c4_22ags2
		spb40c4_22fba3

*) **Note:** Installation of the cnt0 extension is not mandatory if you use the German localization ger0 or finance brush-up extension fb3.

- 3 Make sure that all users now exit the environment in which you want to install the Service Pack.
- 4 Run the Process Solutions (ttpmc2101m000) session to process the PMC dumps that you scanned in Step 2. This session consists of two parts: the Check Solution to Install (ttpmc2203s000) session and the Install Solution (ttpmc2205s000) session.
- 5 In the Install Solution session, select the **Preinstallation Instructions Followed Up** check box, otherwise, the Service Pack will not install.
- 6 Start the Convert to Runtime Data Dictionary (ttadv5215m000) session for all package combinations.
- 7 Select all of the check boxes in this session to reconfigure the tables, because some tables were modified for bug fixing.

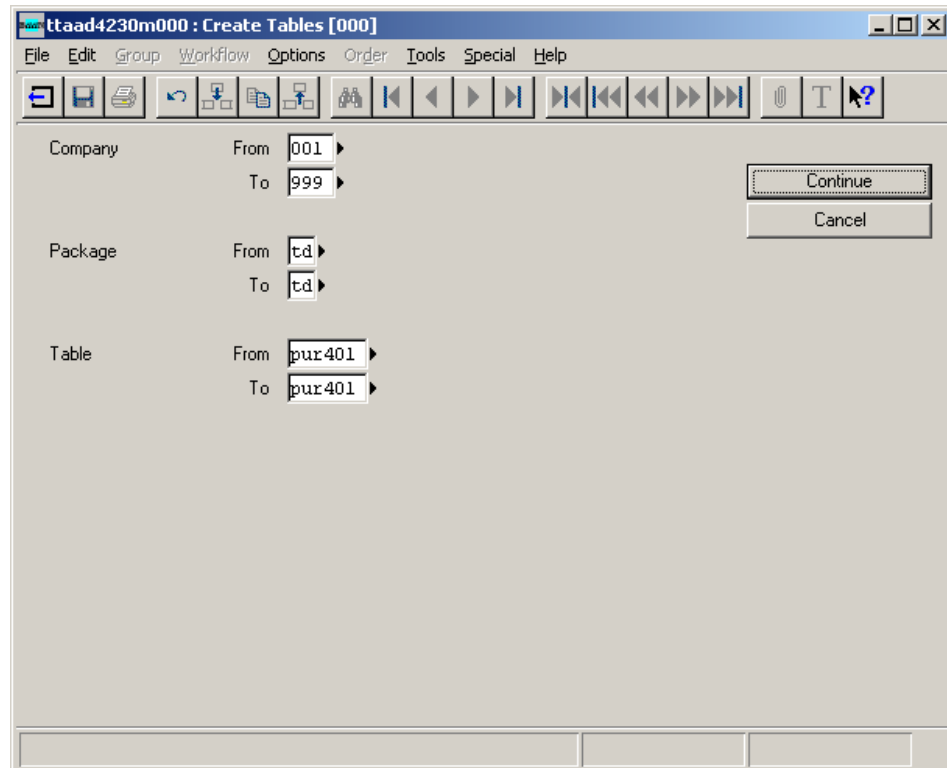


- 8 Exit and restart the bshell.

- 9 If you use the ASCII help viewer, run the Create Runtime Help (ttadv5230m000) session for the languages and update VRCs that you use.
- 10 Select the check boxes as shown in the following figure:

	From	To	
Package		zz	<input checked="" type="checkbox"/>
Version	B40U	B40U	<input checked="" type="checkbox"/>
Release	c4	c4	<input checked="" type="checkbox"/>
Customer		zzzz	<input checked="" type="checkbox"/>
Language	1	4	<input checked="" type="checkbox"/>
Domains	<input checked="" type="checkbox"/>		<input checked="" type="checkbox"/>
Tables	<input checked="" type="checkbox"/>		<input checked="" type="checkbox"/>
Table Fields	<input checked="" type="checkbox"/>		<input checked="" type="checkbox"/>
Labels	<input checked="" type="checkbox"/>		<input checked="" type="checkbox"/>
Forms	<input checked="" type="checkbox"/>		<input checked="" type="checkbox"/>
Form Fields	<input checked="" type="checkbox"/>		<input checked="" type="checkbox"/>
		Menus	<input checked="" type="checkbox"/>
		Messages	<input checked="" type="checkbox"/>
		Questions	<input checked="" type="checkbox"/>
		Sessions	<input checked="" type="checkbox"/>
		Business Objects	<input checked="" type="checkbox"/>
		Reports	<input checked="" type="checkbox"/>

- 11 Start the Create Tables (ttaad4230m000) session to create the new table tdpur401 that was added to the Service Pack. The session then physically creates the new table.



- 12 Exit and restart the bshell.

The installation of the Service Pack is complete. After you perform the post-installation procedure, users can begin to use the environment.

Post-installation instructions

After you install the Service Pack, take the following steps:

- 1 Install a new Office Integration executable. For more information, refer to solutions 211629 and 213971.

This step is only relevant if you use the Office Integration for Baan IVc4 and if you did not install solution 213971 before you installed the Service Pack.

- 2 Install a new conversion setup for ASN/ Despatch Note messages. For more information refer to solution 209635.

This step is only relevant if you use EDI and if you did not install solution 209635 before you installed the Service Pack.

- 3 Execute the Correction Program (ELP Parameters) (tdcora002m000) to fill the New ELP process parameter in the Sales Contracts.

This step is only relevant if you use the ags0 or ags2 extension and if you did not install solution 211960 before you installed the Service Pack

- 4 The following correction programs are delivered for this Service Pack. Refer to the related solution texts to check whether you must run these correction programs:

- Update Standard Options (ttcorstdcomm). Solution 213787.
- Archive / Delete Installment records (tdcor5001m000). Solution 214280.
- Correct PRP replenishment order in TP for Project Items (tpcor3104m000). Solution 211204.
- Correction Program for Element Relationships (tpcor0242m000). Solution 211904.
- Correction Program to fill tppin100.ttyp (Transaction type) (tpcor0235m000). Solutions 215003 and 215086.
- Correction Program for AMS (ticor9229m000) and Maintain Corrupted Production Orders (ticor0201s000). Solution 212902 (and1 extension only).
- Update Number of Pegs in CST951 (ticor2400m00b) and Print CST001/CST951 Differences (ticor2401m00b). Solutions 213607 and 215636 (and1 extension only).
- Rebuild Planned Inventory Transactions (tdcor0250m000). Solution 213796 (and1 extension only).
- Correct Shipment References (tdcorssc028). Solution 211726 (ags0 and ags2 extensions only).
- Correction Program (ELP Parameters) (tdcora002m000). Solution 211960 (ags0 and ags2 extensions only).

Source codes of PMC Service Packs

Solutions and Service Packs that Infor creates and installs through the PMC tool have the source code of modified components included. However, the

source codes of program scripts, libraries, and functions are only installed if a previous version of the source code of the component exists in the environment in which the solution or Service Pack is installed.

For example, if a fix is produced for solution 71291 in the program script `tdilc4202`, the PMC dump for this solution contains the program script source and the program object.

This solution is installed at system X in the update VRC `B40U_c4_stnd`. Before you install the program script source, the PMC tool checks whether the program script source exists in the update VRC, or in a VRC that is in the derived-from structure for the update VRC.

If the program script source of `tdilc4202` already exists, the new program script source and the program object are installed from the PMC dump of the solution. If the program script source is not found, only the program object is installed.

Before you begin the installation of a solution or Service Pack through PMC, Infor alliances or customers who need the source codes must make sure that the sources exist in the environment in which the solutions or Service Packs are installed.

Chapter 3

Functional Enhancements and Important Solutions

3

This chapter describes the most important functional enhancements and solutions for Service Pack 22. The following enhancements and important solutions are introduced:

- Webtop: size of the text editor
- Ags0/ags2 extensions: Support of Renault CINDI process
- Ags0/ags2 extensions: Parent package number
- Ags0/ags2 extensions: Internal Dock information
- Baan IVc4: Other

Webtop: size of the text editor

Brief description of the enhancement

When starting the Text Editor in WebTop, the size of the text editor was too small. The text window sizes are now passed to the WebTop such that the WebTop can now show the correct Text Editor Window size.

New or changed software components

For a detailed overview of new or changed software components, refer to solution 211101 in the document componentlist_tools.

Customer implication

To implement this enhancement, follow the instructions in solution 211101. Before you can use this enhancement, however, you must download and install a new version of the WebTop (solution 142977) to make this update effective. The minimal required build version for Webtop is: KA0162 or LA0102.

Ags0/ags2 extensions: Support of Renault CINDI process

Brief description of the enhancement

Starting with 2006 Renault introduces a new process called CINDI (Common Identification Number for Delivery Improvement). CINDI describes the way a Renault delivery order must be processed by the supplier. Key element of the CINDI process is the Transport Identification Number (IT). The IT is used to compose requirements within a predefined time slot as Renault expects one Delivery Note by IT. In addition a Tier-1 supplier has to put the Release Authorization Number (RAN) provided by Renault on the delivery packaging. So those suppliers are forced to print the RAN on handling unit labels (UM) and on packaging unit labels (UC).

The CINDI process is supported in Baan IV AGS0 and Baan IV AGS2. Customers must adjust the conversion set up to ensure the shipment reference stored in the incoming EDI message (DELJIT, DESADV) is passed to the original shipping schedules. The same applies for the RAN which can be seen as a Call-Off number.

New or changed software components

For a detailed overview of new or changed software components, refer to solution 214566 in the document componentlist_ags0 or componentlist_ags2.

Customer implication

Customers must adjust the conversion set up to ensure the shipment reference stored in the incoming EDI message (DELJIT, DESADV) is passed to the original shipping schedules. The same applies for the RAN which can be seen as a Call-Off number. For further details, refer to solution 214566.

Ags0/ags2 extensions: Parent package number

Brief description of the enhancement

Working with internal EDI it was not possible to read in the parent package number for the inner packages. This information was not stored within the outgoing ASN. As a consequence it was not possible to validate the received ASN which expects the parent package number

A new table field 'Parent Package Number' has been introduced in the Delivery Packaging (tdssc019) table. This field is populated with the parent package number - the package number of the outer package - when printing the delivery documents.

New or changed software components

For a detailed overview of new or changed software components, refer to solution 215174 in the document componentlist_ags0 or componentlist_ags2.

Customer implication

Customers must adjust the conversion setup for the outgoing ASN. Replace the field tdssc019.ppon by the new field tdssc019.ppno for the parent package number. For further details, refer to solution 215174.

Ags0/ags2 extensions: Internal Dock information

Brief description of the enhancement

The Internal Dock information, which identifies the location at customers site where unloading takes place was taken from the delivery addresses, but not from the schedules. Now the Automatically Create Planned Deliveries (tdssc0217m000) session takes the Internal Dock information first from the shipping schedule, then from the schedule and if not present in the schedules, from the delivery addresses.

New or changed software components

For a detailed overview of new or changed software components, refer to solution 213985 in the document componentlist_ags0 or componentlist_ags2.

Customer implication

You can begin to use this enhancement immediately.

Baan IVc4: Other

The following table lists the other minor functional modifications and optimizations in the Service Pack. For more details, refer to the detailed solution descriptions of the relevant solutions in the Release Notes documents in the Documentation folder.

Area / Extension	Solution	Description
Common QMS	211588	The maximum value of the sequence number for a storage inspection is increased from 999 to 9999 in the Generate Storage Inspections (tcqms2220m000) session
Finance CMG	212635	A new check report, Canadian Checks, is added to the Transfer Payments (tfcmg1260s000) session

Finance CMG	211523	IBAN check is now supported for Bulgaria, according to the European Central Bank specification of IBAN document TR201
Finance GLD	212795	A new option to enter a document date for the reverse entry is now available in the Reverse Entry (tfgld1295m000) session
Manuf. CST	210898	Backflushing field can be selected for an estimated material, even when the linked operation is already reported completed (partially) in the Enter Material Issue for Production Orders (ticst0101m000) session
Project PTC	211534	Additional questions are asked when the unit on a budget line is changed in the Maintain Element Budget (Material) (tpptc1110m000) session
Vertex Tax Journal	214858	A new parameter to allow updating the Vertex Tax Journal with US Dollars for a foreign (Canadian) company is now available
Tax Provider	214822	Using the Tax Provider Calculation Utility (tccom6212m000) to do an adjustment or to calculate rates it is now possible to specify different ship-from and ship-to countries (in order to do a tax register adjustment for a sale from Canada to US and vice versa)
Ags0/ags2 extension	211960	The New ELP process parameter is now available on the Sales Contract level to allow a flexible setup of the different ELP processes in the Generate Master Production Schedule (timps3201m000) session
Ags0/ags2/sch1/nas0 extension	214931	A new option to let the Purchase Order Positions correspond to the Purchase Requisition positions is now available in the Generate Purchase Orders (tdprq0242m000) session

Ags0/ags2/sch1/ nas0 extension	214500	When Purchase Orders are generated from Purchase Requisitions, the Purchase Requisition text (Header and Line) is now copied to the Purchase Order in the Generate Purchase Orders (tdprq0242m000) session
And1 extension	212072	SPP functionality is now available for all types of contracts in the Maintain Supplier Progress Payment Contract (lines) (tpcin5111s000) session
And1 extension	212873	The Overhead Cost Allocation process is now consistent with the Billable Cost Report for the receipt costs of the project direct subcontracting purchase order in the Apply Overhead (tfoca0265m000) session