



forward faster

▶▶ SSA® Baan IVc4

# Installation and Deployment Guide for Service Pack 21

## © Copyright 2006 by SSA Global Technologies, Inc. and its Subsidiaries and Affiliates

All rights reserved. No part of this publication may be reproduced, stored in a retrieval system, or transmitted in any way or by any means, including, without limitation, photocopying or recording, without the prior written consent of SSA Global Technologies™, Inc.

### Important Notices

The material contained in this publication (including any supplementary information) constitutes and contains confidential and proprietary information of SSA Global Technologies, Inc. or its Subsidiaries and Affiliates.

By gaining access to the attached, you acknowledge and agree that the material (including any modification, translation or adaptation of the material) and all copyright, trade secrets and all other right, title and interest therein, are the sole property of SSA Global Technologies, Inc. and/or its Subsidiaries and Affiliates and that you shall not gain right, title or interest in the material (including any modification, translation or adaptation of the material) by virtue of your review thereof other than the non-exclusive right to use the material solely in connection with and the furtherance of your license and use of software made available to your company from SSA Global Technologies, Inc. or its Subsidiaries and Affiliates (as applicable) pursuant to a separate agreement ("Purpose").

In addition, by accessing the enclosed material, you acknowledge and agree that you are required to maintain such material in strict confidence and that your use of such material is limited to the Purpose described above.

Although SSA Global Technologies, Inc. and/or its Subsidiaries and Affiliates has taken due care to ensure that the material included in this publication is accurate and complete, neither SSA Global Technologies, Inc. or its Subsidiaries or Affiliates can warrant that the information contained in this publication is complete, does not contain typographical or other errors, or will meet your specific requirements. As such, neither SSA Global Technologies, Inc. or its Subsidiaries or Affiliates assumes and hereby disclaims all liability, consequential or otherwise, for any loss or damage to any person or entity which is caused by or relates to errors or omissions in this publication (including any supplementary information), whether such errors or omissions result from negligence, accident or any other cause.

### Trademark Acknowledgements

SSA, SSA Global and SSA Global Technologies are trademarks or registered trademarks of SSA Global Technologies, Inc. in the United States and/or other countries.

Baan is a registered trademarks of SSA Global Technologies, Inc. in the United States and/or other countries.

All other company, product, trade or service names referenced may be registered trademarks or trademarks of their respective owners.

### Publication Information

**Document code** : U9136A US

**Release** : SSA® Baan IVc4

**Publication date** : August 06

# Table of Contents

<b>Chapter 1</b>	<b>Introduction.....</b>	<b>1-1</b>
	Contents .....	1-3
<b>Chapter 2</b>	<b>To Install the Service Pack .....</b>	<b>2-1</b>
	Preinstallation requirements .....	2-1
	To install the Service Pack.....	2-4
	To install the Tools.....	2-4
	To install the applications.....	2-8
	Post-installation instructions .....	2-12
	Source codes of PMC Service Packs .....	2-13
<b>Chapter 3</b>	<b>Functional Enhancements and Important Solutions .....</b>	<b>3-1</b>
	Tools: password aging .....	3-1
	Short description of the enhancement .....	3-1
	New or changed software components.....	3-1
	Customer implication.....	3-1
	SSA Baan IVc4: Other .....	3-2



# About this Guide

This document is an Installation and Deployment Guide that describes the contents of Service Pack 21 and how to install Service Pack 21 on SSA Baan IVc4. This document is intended for SSA Baan IVc4 installers and system administrators.

This document includes the following chapters:

Chapter 1, "Introduction," briefly describes Service Pack 21 for Baan IVc4.

Chapter 2, "To Install the Service Pack," describes how to install Service Pack 21.

Chapter 3, "Functional Enhancements and Important Solutions," describes the most important functional enhancements and important solutions of Service Pack 21.

## **Send us your comments**

We continually review and improve our documentation. Any remarks/requests for information concerning this document or topic are appreciated. Please e-mail your comments to [documentation@ssaglobal.com](mailto:documentation@ssaglobal.com).

In your e-mail, refer to the document number and title. More specific information will enable us to process feedback efficiently.



# Chapter 1

## Introduction

# 1

Service Pack 21 for SSA Baan IVc4 is intended for users of Baan IVc4.

You can use this Service Pack to upgrade existing installations.

Service Pack 21 contains all bug fixes through May 15, 2006. In addition, Service Pack 21 contains a number of functional enhancements.

You can install the Service Pack by means of the PMC tool on the following hardware platforms:

- UNIX
- Microsoft Windows

You can use the tool to install individual solutions, which you can download from the SSA One Point Support Web site, or to install Service Packs.

The following table lists the extensions and languages for which the Service Pack is available:

Extension	Code				
		Dutch = 1	English = 2	German = 3	French = 4
Standard SSA Baan IVc4		X	X	X	X
Aerospace and Defense and0	And0		X		

Aerospace and Defense and1	And1	X			
Baan Connect Kit 1.1 / 1.2 / 1.3	Bci0	X	X	X	X
Controlling	Cnt0	X	X	X	X
French localization	Fre0	X			X
Italian localization	Itl0	X			
Supply Chain – Italian localization	Its0	X			
Japanese localization	Jap0	X			
North American Automotive Solution	Nas0	X	X	X	
Multicurrency	Mcr0	X			
Nordic localization	Nc20	X			
Netherlands localization	NI10	X	X		
Supply Chain – Controlling	Sccl	X	X	X	X
Supply Chain	Sch1	X	X	X	X
iCRM integration	Crm0	X	X	X	X
Automotive Global Solution	Ags0	X	X	X	X
Automotive Global Solution release 2	Ags2	X	X		
Aftermarket Service Parts Solution	Ams0	X			
German Localization (on Standard)	Ger0			X	
German Localization (on Supply Chain)	Scf0			X	
Finance Brush Up (on Standard)	Fbu3			X	
Finance Brush Up (on AGS0)	Fba3			X	
Finance Brush Up (on AGS2)	F3a2			X	

Availability of translations to other languages is published under solution number 211055 on the SSA One Point Support Web site.

## Contents

The Service Pack CD-ROM contains the following files and folders:

- B40c4\_SP21 folder  
This folder contains all the files required to update the SSA Baan IVc4 software. The folder contains the following files:
  - stb40c4\_21std  
Contains fixes for Tools.
  - spb40c4\_21std  
Contains fixes for the standard application software.
  - spb40c4\_21and0  
Contains fixes for the Aerospace and Defense 2.2c extension.
  - spb40c4\_21and1  
Contains fixes for the Aerospace and Defense and1 extension.
  - spb40c4\_21ags0  
Contains fixes for the Automotive Global Solution extension.
  - spb40c4\_21ags2  
Contains fixes for the Automotive Global Solution extension release 2.
  - spb40c4\_21ams0  
Contains fixes for the Aftermarket Service Parts Solution extension.
  - spb40c4\_21bci0  
Contains fixes for the Baan Connect Kit extension.
  - spb40c4\_21cnt0  
Contains fixes for the Controlling extension.
  - spb40c4\_21crm0  
Contains fixes for the iCRM integration extension.
  - spb40c4\_21fba3  
Contains fixes for the Finance Brush Up extension (on AGS0).
  - spb40c4\_21fbu3  
Contains fixes for the Finance Brush Up extension (on standard).
  - spb40c4\_21fre0  
Contains fixes for the French localization.
  - spb40c4\_21ger0  
Contains fixes for the German localization (on standard).

- spb40c4\_21itl0  
Contains fixes for the Italian localization.
- spb40c4\_21its0  
Contains fixes for the Supply Chain - Italian localization.
- spb40c4\_21jap0  
Contains fixes for the Japanese localization.
- spb40c4\_21mcr0  
Contains fixes for the Multicurrency extension.
- spb40c4\_21nas0  
Contains fixes for the North American Automotive Solution extension.
- spb40c4\_21nc20  
Contains fixes for the Nordic localization.
- spb40c4\_21nl10  
Contains fixes for the Netherlands localization.
- spb40c4\_21scc1  
Contains fixes for the Supply Chain-Controlling extension.
- spb40c4\_21scf0  
Contains fixes for the German localization (on Supply Chain).
- spb40c4\_21sch0  
Contains the first set of fixes for the Supply Chain extension.
- spb40c4\_21sch1  
Contains the second set of fixes for the Supply Chain extension.
- Documentation folder:  
The documentation folder of the Service Pack CD-ROM contains the following documentation:
  - *Installation and Deployment Guide for Service Pack 21 (U9136A US)*
  - Release Notes folder with modified component and solved defect overviews, which includes the following:
    - Relnotes\_stnd.doc, which contains a textual description of solved defects for the standard application software.
    - Relnotes\_tools.doc, which contains a textual description of solved defects for the tools software.
    - Relnotes\_xxxx.doc, which contains a textual description of solved defects for the software of each of the extensions and localizations.

- Componentlist\_xxxx.xls, which contains an overview of modified components.
- Solutions\_xxxx.txt, which contains an enumeration of solution numbers included in the Service Pack.

The textual descriptions of solved defects and the overviews of modified components and solution numbers are created for each of the products: standard, tools, localization, or extension, in which xxxx denotes the relevant localization or extension.

The Release Notes documents with the textual descriptions of solved defects for each of the extensions and localizations are now organized differently as compared to Service Pack 19. The Release Notes documents only contain descriptions of those solutions that are specifically built in the related extension or localization. Solutions that are solved in the standard software or in a derived extension or localization and are ported to the related extension or localization are not included in the Release Notes document.



---

## Chapter 2

### To Install the Service Pack

# 2

#### Preinstallation requirements

Before you can install Service Pack 21, you must have Service Pack 20 and earlier Service Packs for Baan IVc4 installed.

Before you install the tools part of the Service Pack, you must have porting set 6.1c.07.08 or a later release of the porting set installed. The porting set is not included in the Service Pack. Therefore, you must order the porting set separately, or download the porting set from solution 15219 on the SSA One Point Support Web site.

Before you install the Service Pack, you must first run the Convert to Runtime Data Dictionary (ttadv5215m000) session for the full range of package combinations, packages, and tables. Select all of the check boxes in this session.

The following table provides an indication of details such as the minimum disk space and time required to carry out a successful installation:

Product	Number of solutions	Uninstall (MB)	Install (MB)	Total (MB)	Installation Time (hh:mm)
Standard	248	42.3	49.6	91.9	0:09
Tools	45	1.0	2.7	3.7	0:01
And0	162	22.9	32.9	55.8	0:04
And1	214	29.2	42.7	71.9	0:04
Ags0	183	31.8	45.7	77.5	0:05
Ags2	187	31.3	45.3	76.6	0:05
Ams0	87	17.1	24.3	41.4	0:02
Bci0	45	5.6	8.8	14.4	0:03
Cnt0	81	10.1	16.5	26.6	0:02
Crm0	39	4.4	6.4	10.8	0:01
Fre0	23	1.4	2.8	4.2	0:01
Itl0	108	18.4	24.5	42.9	0:05
Its0	112	23.2	30.8	54.0	0:06
Jap0	51	9.0	16.2	25.2	0:02
Mcr0	186	34.6	43.0	77.6	0:08
Nas0	86	14.9	24.2	39.1	0:02
Nc20	40	8.9	12.2	21.1	0:01
NI10	1	0.1	0.1	0.2	0:00
Scc1	91	13.3	21.7	35.0	0:02
Sch0	215	32.6	45.4	78.0	0:05
Sch1	183	30.6	41.5	72.1	0:04
<b>Total</b>	<b>2387</b>	<b>382.7</b>	<b>537.3</b>	<b>920.0</b>	<b>1:12</b>

**Note:** The figures in this table are merely indicative. No rights can be derived from the table. The installation time strongly depends on factors such as the following:

- The operating system and database you use
- The number of solutions that are part of the current Service Pack that are already installed as individual solutions
- The size of the tables to be reconfigured
- Whether you save components during the installation process

The figures used in the previous table are based on an installation performed using the following configuration:

- Operating System: HP-UX 11.11
- CPU: 2
- Memory: 3 GB RAM
- Database: BISAM
- Other: flag 'Save Components' in PMC active.

**Note:** The German localization/Finance Brush Up extensions were not installed and the figures for these extensions are not included.

The Installation Time column represents the time to install the specified PMC patches. Scanning the patches, check to install for the patches and the convert to runtime data dictionary are not included in these figures.

A minimum of 1 megabyte (MB) disk space is required for the runtime software components in the Update VRC directory for the standard software.

This directory is the directory defined in the Maintain Directories of Software Components (ttadv1115m000) session. The required disk space for the runtime software components in the Update VRC directories for the extensions and localizations has not been measured. The expectation is that each extension or localization requires a maximum of less than 1 MB on average. The required disk space increases if B-languages are installed.

## To install the Service Pack

Before you install the Service Pack 21, first check if any last minute information is available about Service Pack 21 and the installation of this Service Pack. You can find this information on the SSA One Point Support Web site under solution number 211053.

For the standard SSA Baan IVc4 software, two dumps are created: one for Tools and one for the application. The Tools solutions are in a PMC dump called stb40c4\_21stnd, whereas the application solutions are in a dump called spb40c4\_21stnd. The reason for this is because the PMC dump for Tools must be scanned in the Base VRC for the standard software, but the components are actually installed in the unique tools VRC B40 c4. For Tools, you cannot have an Update VRC. Therefore, the Tools components are always imported in the unique Tools VRC B40 c4, which is the live VRC. You cannot have a test VRC for Tools.

During the installation of the Service Pack, you can specify the sequence of the Tools and applications installations. You can first install the Tools dump and later the application dumps, or first install the application dumps and later the Tools dump. No dependency exists between these dumps. For best results, SSA Global recommends that you install the Tools dump first, and then install the Application dumps, however, you can also choose to install the Application dumps first and then the Tools dump.

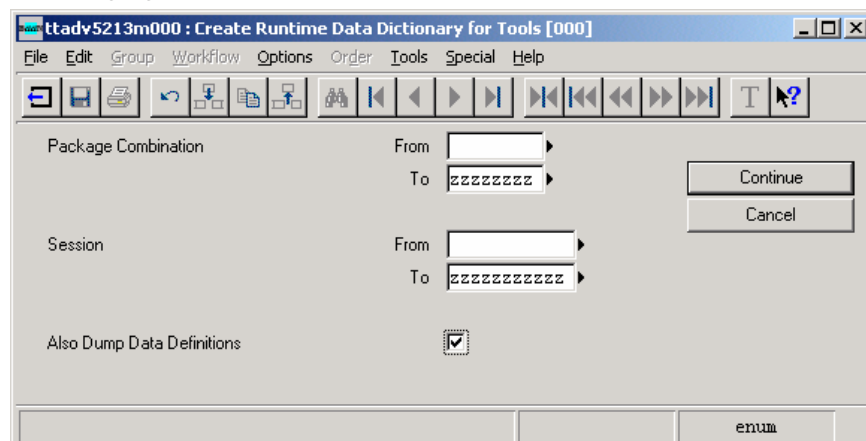
For best results, install Tools and applications at the same time, however, if required, you can choose to install applications and Tools at separate times.

## To install the Tools

To install the Tools part of Service Pack 21 for SSA Baan IVc4, take the following steps:

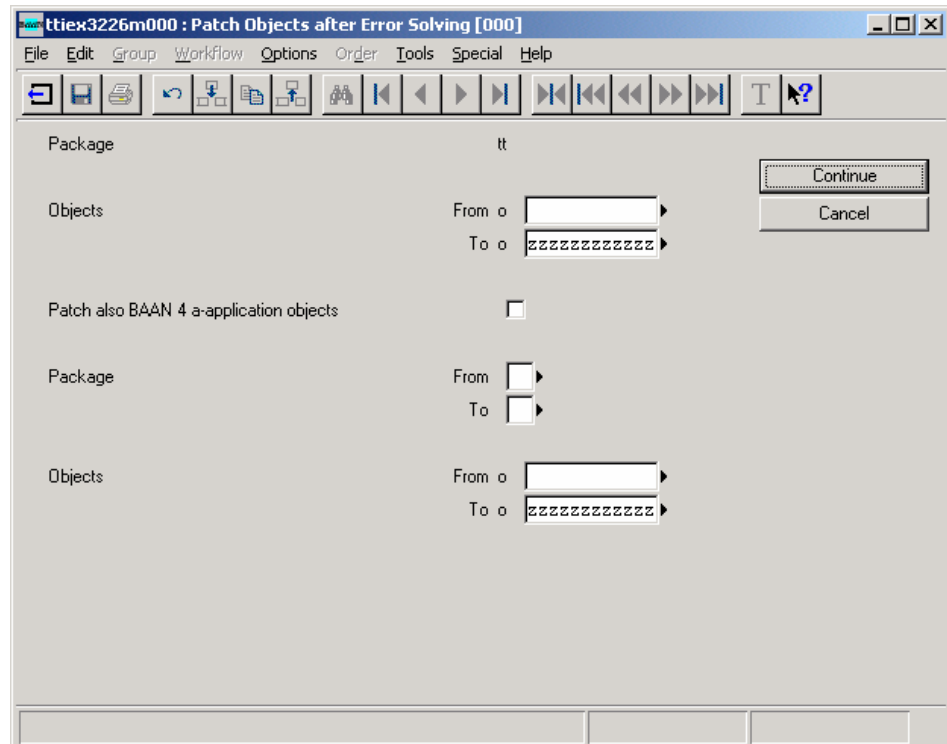
- 1 [For UNIX users] Copy the file stb40c4\_21stnd from the B40c4\_SP21 folder of the CD-ROM to a temporary directory on the UNIX system. To copy the files, you must use a transfer protocol in binary mode. If you have the facility to mount a CD-ROM to your UNIX platform, transfer of files from the CD-ROM to the UNIX system is unnecessary. In this case, you can simply install directly from the CD-ROM. For information on how to mount a CD-ROM to your UNIX system, refer to the documentation from your hardware vendor.
- 2 Scan the PMC dump stb40c4\_21stnd by means of the Scan Solution File (ttpmc2200m000) session.

- 3 Select the **Overwrite** check box.
- 4 Make sure that all users now exit the environment in which you want to install the Service Pack.
- 5 Run the Process Solutions (ttpmc2101m000) session to process the PMC dump stb40c4\_21. This session consists of two parts: the Check Solution to Install (ttpmc2203s000) session and the Install Solution (ttpmc2205s000) session.
- 6 In the Install Solution session, select the **Preinstallation Instructions Followed Up** check box, otherwise, the Service Pack will not install.
- 7 Start the Create Runtime Data Dictionary for Tools (ttadv5213m000) session for all package combinations.
- 8 Select the **Also Dump Data Definitions** check box, as shown in the following figure:



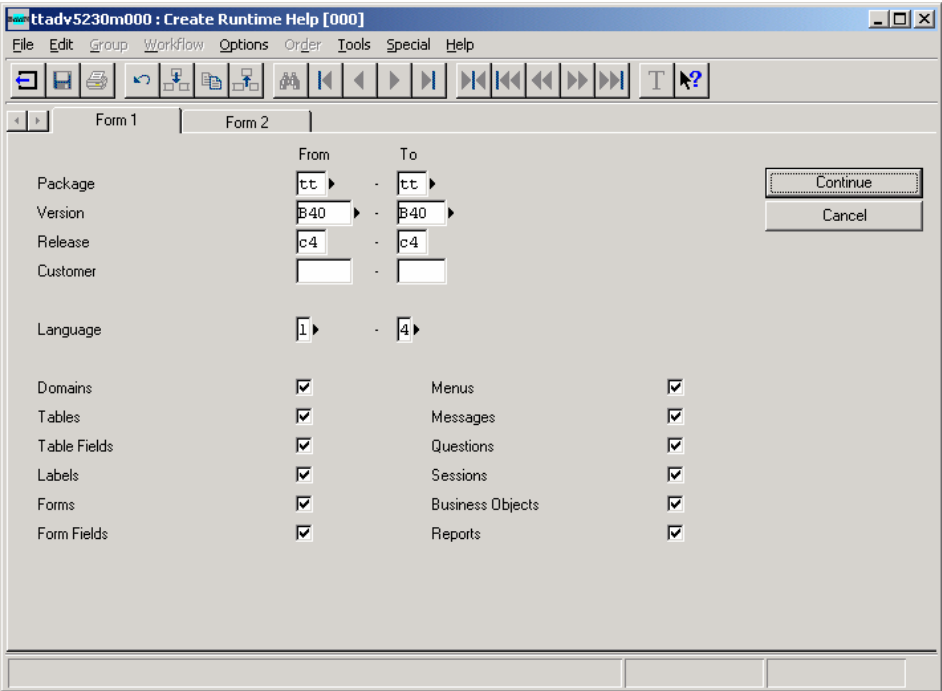
- 9 Exit the bshell.
- 10 If Baan Tools components are loaded in shared memory, stop and restart the shared memory.
- 11 Restart the bshell.

- 12 Start the Patch Objects after Error Solving (ttiex3226m000) session, as shown in the following figure, for all Baan Tools objects:

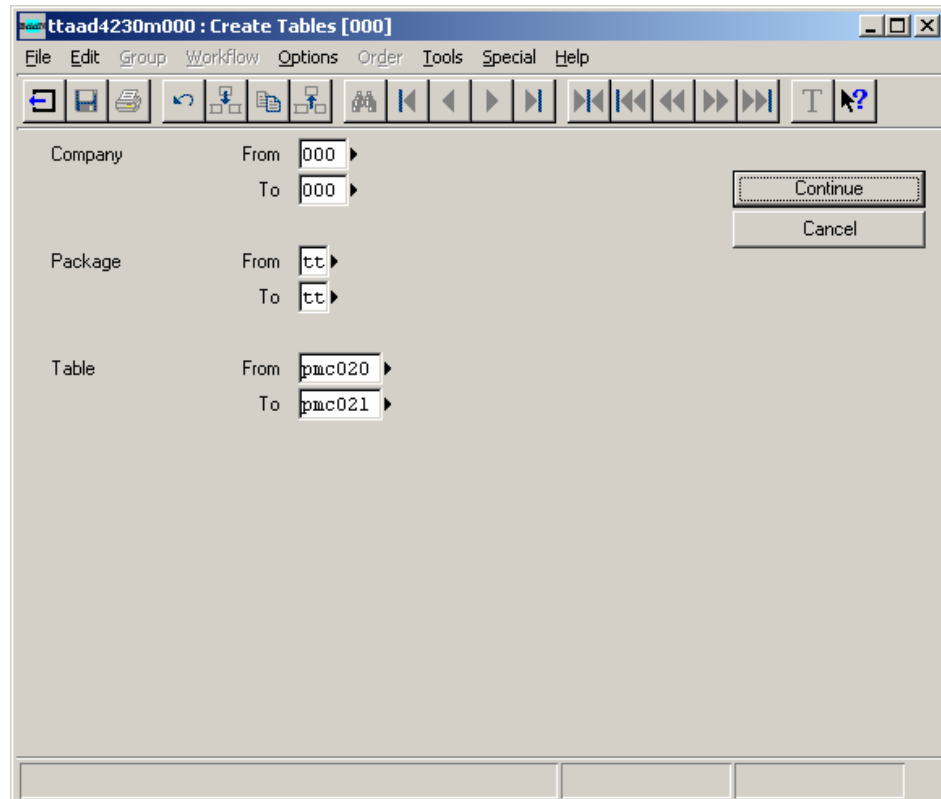


- 13** If you use the ASCII help viewer, run the Create Runtime Help (ttadv5230m000) session for the tools VRC B40 c4 and the languages that you use.

14 Select the check boxes as shown in the following figure:



15 Start the Create Tables (ttaad4230m000) session to create the two new tables added to the Service Pack: ttpmc020 and ttpmc021. The session then physically creates the new tables.



- 16 Exit and restart the bshell. The installation of the tools part of the Service Pack is ready.

If you do not want to continue with the installation of the application part of the Service Pack, all users can start to use the environment. If you do want to continue with the installation of the application part of the Service Pack, continue with the following steps.

### To install the applications

To install the applications part of Service Pack 21 for SSA Baan IVc4, take the following steps:

- 1 [For UNIX users] Copy the files from the B40c4\_SP21 folder of the CD-ROM to a temporary directory on the UNIX system. To copy the files, you must use a transfer protocol in binary mode.

The size of the dumps in this folder is approximately 564 MB. You do not need to transfer all files. In Step 2, you can see which files are required for your software version.

If you have the facility to mount a CD-ROM to your UNIX platform, transfer of files from the CD-ROM to the UNIX system is unnecessary. In this case, you can install directly from the CD-ROM.

For information on how to mount a CD-ROM to your UNIX system, refer to the documentation from your hardware vendor.

- 2 Scan the PMC dumps by means of the Scan Solution File (ttpmc2200m000) session. In this session, you must select the **Overwrite** check box. The PMC dumps that you must scan depend on the extensions that you use in your package combinations.

You must always scan the PMC dump for the standard software (spb40c4\_21std). In addition, you must scan one or more PMC dumps, depending on the extension that you use, as shown in the following table:

Extension	Code	PMC dumps needed
Aerospace and Defense and0	And0	spb40c4_21and0
Aerospace and Defense and1	And1	spb40c4_21and1
Baan Connect Kit 1.1 / 1.2 / 1.3	Bci0	spb40c4_21bci0
Controlling	Cnt0	spb40c4_21cnt0
French localization	Fre0	spb40c4_21fre0
Italian localization	Itl0	spb40c4_21itl0
Supply Chain – Italian localization	Its0	spb40c4_21its0 spb40c4_21sch0 spb40c4_21sch1
Japanese localization	Jap0	spb40c4_21jap0
North American Automotive Solution	Nas0	spb40c4_21nas0 spb40c4_21sch0 spb40c4_21sch1
Multicurrency	Mcr0	spb40c4_21mcr0
Nordic localization	Nc20	spb40c4_21nc20
Netherlands localization	Nl10	spb40c4_21nl10

Supply Chain – Controlling	Scc1	spb40c4_21cnt0 spb40c4_21sch0 spb40c4_21sch1 spb40c4_21scc1
Supply Chain	Sch1	spb40c4_21sch0 spb40c4_21sch1
iCRM integration	Crm0	spb40c4_21crm0
Automotive Global Solution	Ags0	spb40c4_21ags0 spb40c4_21cnt0
Automotive Global Solution release 2	Ags2	spb40c4_21ags2 spb40c4_21cnt0
Aftermarket Service Parts Solution	Ams0	spb40c4_21ams0 spb40c4_21ags2 spb40c4_21cnt0
German Localization (on Standard)	Ger0	spb40c4_21ger0 spb40c4_21cnt0 *)
German Localization (on Supply Chain)	Scf0	spb40c4_21scf0 spb40c4_21cnt0 spb40c4_21sch0 spb40c4_21sch1 spb40c4_21scc1 spb40c4_21ger0
Finance Brush Up (on Standard)	Fbu3	spb40c4_21fbu3 spb40c4_21cnt0 *) spb40c4_21ger0
Finance Brush Up (on AGS0)	Fba3	spb40c4_21fba3 spb40c4_21cnt0 spb40c4_21ags0

---

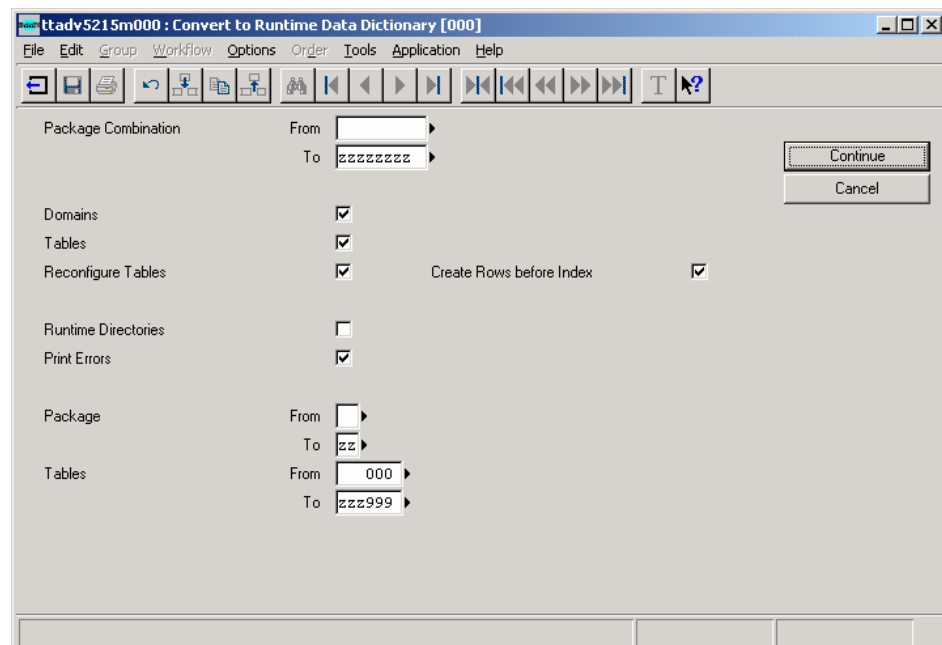
Finance Brush Up (on AGS2)	F3a2	spb40c4_21cnt0
		spb40c4_21ags2
		spb40c4_21fba3 **)

---

\*) **Note:** Installation of the cnt0 extension is not mandatory if you use the German localization ger0 or finance brush-up extension fbu3.

\*\*) **Note:** No PMC dump is created for the f3a2 extension, because no fixes have been made for this extension during the Service Pack timeframe.

- 3 Make sure that all users now exit the environment in which you want to install the Service Pack.
- 4 Run the Process Solutions (ttpmc2101m000) session to process the PMC dumps that you scanned in Step 2. This session consists of two parts: the Check Solution to Install (ttpmc2203s000) session and the Install Solution (ttpmc2205s000) session.
- 5 In the Install Solution session, select the **Preinstallation Instructions Followed Up** check box, otherwise, the Service Pack will not install.
- 6 Start the Convert to Runtime Data Dictionary (ttadv5215m000) session for all package combinations.
- 7 Select all of the check boxes in this session to reconfigure the tables, because some tables were modified for bug fixing.



- 8 Exit and restart the bshell.
- 9 If you use the ASCII help viewer, run the Create Runtime Help (ttadv5230m000) session for the languages and update VRCs that you use.
- 10 Select the check boxes as shown in the following figure:

	From	To
Package		zz
Version	B40U	B40U
Release	c4	c4
Customer		zzzz
Language	1	4

Domains	<input checked="" type="checkbox"/>	Menus	<input checked="" type="checkbox"/>
Tables	<input checked="" type="checkbox"/>	Messages	<input checked="" type="checkbox"/>
Table Fields	<input checked="" type="checkbox"/>	Questions	<input checked="" type="checkbox"/>
Labels	<input checked="" type="checkbox"/>	Sessions	<input checked="" type="checkbox"/>
Forms	<input checked="" type="checkbox"/>	Business Objects	<input checked="" type="checkbox"/>
Form Fields	<input checked="" type="checkbox"/>	Reports	<input checked="" type="checkbox"/>

- 11 Exit and restart the bshell.

The installation of the Service Pack is complete. After you perform the post-installation procedure, users can begin to use the environment.

## Post-installation instructions

After you install the Service Pack, take the following steps:

- 1 Install a new Office Integration executable. For more information, refer to solution 208469.

This step is only relevant if you use the Office Integration for Baan IVc4 and if you did not install solution 208469 before you installed the Service Pack.

- 2 The following correction programs are delivered for this Service Pack. Refer to the related solution texts to check whether you must run these correction programs:
- Repair where-used Functions by Object (ttcor9213m000). Solution 208543.
  - Update Contract Revenue (tscor0203m000). Solution 206727.
  - Correction of Rework orders posted with wrong reason code directly to GLD (tpcor22m000). Solution 208538 (and1 extension only).
  - Update Pegged SFC Orders comp'd incorrectly (ticor9298m000). Solution 208762 (and1 extension only).
  - Correct Authorisation Step (tdcorams0m000). Solution 208970 (ams0 extension only).

## Source codes of PMC Service Packs

Solutions and Service Packs that SSA Global creates and installs through the PMC tool have the source code of modified components included. However, the source codes of program scripts, libraries, and functions are only installed if a previous version of the source code of the component exists in the environment in which the solution or Service Pack is installed.

For example, if a fix is produced for solution 71291 in the program script tdilc4202, the PMC dump for this solution contains the program script source and the program object.

This solution is installed at system X in the update VRC B40U\_c4\_stnd. Before you install the program script source, the PMC tool checks whether the program script source exists in the update VRC, or in a VRC that is in the derived-from structure for the update VRC.

If the program script source of tdilc4202 already exists, the new program script source and the program object are installed from the PMC dump of the solution. If the program script source is not found, only the program object is installed.

Before you begin the installation of a solution or Service Pack through PMC, SSA Global alliances or customers who need the source codes must make sure that the sources exist in the environment in which the solutions or Service Packs are installed.

---

## Chapter 3

# Functional Enhancements and Important Solutions

# 3

This chapter describes the most important functional enhancements and solutions for Service Pack 21. The following enhancements and important solutions are introduced:

- Tools: Password Aging
- SSA Baan IVc4: Other

### Tools: password aging

#### Brief description of the enhancement

Password Aging functionality is implemented for both UNIX and Windows platforms. This functionality is also Webtop-enabled.

#### New or changed software components

For a detailed overview of new or changed software components, refer to solution 209794 in the document `componentlist_tools`.

#### Customer implication

To implement this enhancement, follow the instructions in solutions 203302 and 119781. Before you can use this enhancement, however, you must

download and install solution 209841 and the latest porting set (solution 15219).

## SSA Baan IVc4: Other

The following table lists the other minor functional modifications and optimizations in the Service Pack. For more details, refer to the detailed solution descriptions of the relevant solutions in the Release Notes documents in the Documentation folder of the CD-ROM.

Area / Extension	Solution	Description
Enterprise Planning	207076	The inventory of manual containerized items is taken into account in the MPS of the non-containerized item.
Distr. PUR	206132	Different selection method for printing specific inquiries in the Print Purchase Inquiries (tdpur1401m000) session
Distr. SLS	209675	Acknowledgment codes can be assigned to sales order lines when updating the sales order header in the Maintain Sales Orders (tdsls4101m000) session
Finance ACP	206512	Subtotals by order have been added to the report of the Receivable Invoices Specifications – Logistical (tfacp1432m000) session
Finance ACP/ACR	209833	Additional sort options in the summary reports for the Print Aging Analysis by Supplier (tfacp2420m000) and Print Aging Analysis by Customer (tfacr2420m000) sessions
Finance ACR	207428	Users can create asset-disposal transactions though the Manual Sales Invoice Lines (tfacr4101s000) session
Finance ACR	208095	A new option, <b>Use Rates Based on Invoice Date</b> , is now available in the Print Sales Invoice (tfacr4410m000) session

Finance ACR	210597	Both the reminder letter number and the original letter number appears in the Maintain Reminder Advice (tfacr3110m000) session
Finance ACR	206271	Subtotals and grand totals in the home currency have been added to the report of the Print Specifications Delivered, Not Yet Invoiced (tfacr1432m000) session
Finance GLD	208362	A new session, Reverse entry (tfgld1295m000), has been added to reverse financial transactions that have already been finalized
Manuf. MRP	208323	Different handling of end dates for a standard calendar (five days a week) and production on a work center in the weekend in the Generate Planned (MPS)/MRP Orders/Batches (timrp1210m000) session
Project PDM	207783	Performance improvement in the Delete Projects (tppdm7810m000) session
Project PDM	207926	Customers with VAT code of type Normal will not be permitted for a project with contract type Subcontracting in the Maintain Customers by Project (tppdm6101s000) session
Project PIN	211641	An option to calculate the default sales price and discount is now available in the <b>Sales Price</b> field in the Maintain Invoice Lines (Cost Plus Equipment) (tppin4171s000) session
Project PIN	210146	Previously, invoice numbers were stored in the PIN module without the corresponding transaction type, which could result in an error 100 (duplicate value) in the Create Invoice (tppin4264m000) session. The transaction type field has now been added to the invoice number in the tables in the PIN module
Project PPC	207837	An option to select on project status and customer is now available in the Print Costs by Period (tpppc4416m000) session

Ags0/ags2 extension	205152	Options to delete confirmed transactions and to print the deleted transactions are now available in the Delete Packaging transactions (tdcsc0215m000) session
Ags0/ags2/sch1/nas0 extension	206187	A new option to select by date in the Print Sales Schedule Variance (tdssc2402m000) session is now available.
Ags0/ags2/sch1/nas0 extension	207034	In case of shortage of a lot-controlled item, an extra delivery line with the shortage quantity is created in the Automatically Create Planned Deliveries (tdssc0217m000) session. A new option is now available to create this delivery line or to add the shortage quantity to the last delivery line
And1 extension	210441	A new method to set the order status if an order line is changed in the Maintain Purchase Order lines (tdpur4102m000) session after printing the purchase order is now available.
And1 extension	207969	A different method of ACRN distribution in contracts is now included.
Itl0/its0 localization	205973	The address, city, VAT number, and Fiscal code are printed in the header of the report of the Print Journal Book (tfgl406m000) session

