



▶▶ SSA® Baan IVc4

# Installation and Deployment Guide for Service Pack 20

## © Copyright 2006 by SSA Global Technologies, Inc. and its Subsidiaries and Affiliates

All rights reserved. No part of this publication may be reproduced, stored in a retrieval system, or transmitted in any way or by any means, including, without limitation, photocopying or recording, without the prior written consent of SSA Global Technologies™, Inc.

### Important Notices

The material contained in this publication (including any supplementary information) constitutes and contains confidential and proprietary information of SSA Global Technologies, Inc. or its Subsidiaries and Affiliates.

By gaining access to the attached, you acknowledge and agree that the material (including any modification, translation or adaptation of the material) and all copyright, trade secrets and all other right, title and interest therein, are the sole property of SSA Global Technologies, Inc. and/or its Subsidiaries and Affiliates and that you shall not gain right, title or interest in the material (including any modification, translation or adaptation of the material) by virtue of your review thereof other than the non-exclusive right to use the material solely in connection with and the furtherance of your license and use of software made available to your company from SSA Global Technologies, Inc. or its Subsidiaries and Affiliates (as applicable) pursuant to a separate agreement ("Purpose").

In addition, by accessing the enclosed material, you acknowledge and agree that you are required to maintain such material in strict confidence and that your use of such material is limited to the Purpose described above.

Although SSA Global Technologies, Inc. and/or its Subsidiaries and Affiliates has taken due care to ensure that the material included in this publication is accurate and complete, neither SSA Global Technologies, Inc. or its Subsidiaries or Affiliates can warrant that the information contained in this publication is complete, does not contain typographical or other errors, or will meet your specific requirements. As such, neither SSA Global Technologies, Inc. or its Subsidiaries or Affiliates assumes and hereby disclaims all liability, consequential or otherwise, for any loss or damage to any person or entity which is caused by or relates to errors or omissions in this publication (including any supplementary information), whether such errors or omissions result from negligence, accident or any other cause.

### Trademark Acknowledgements

SSA, SSA Global and SSA Global Technologies are trademarks or registered trademarks of SSA Global Technologies, Inc. in the United States and/or other countries.

Baan is a registered trademarks of SSA Global Technologies, Inc. in the United States and/or other countries.

All other company, product, trade or service names referenced may be registered trademarks or trademarks of their respective owners.

### Publication Information

**Document code** : U8996A US

**Release** : SSA® Baan IVc4

**Publication date** : March 06

# Table of Contents

<b>Chapter 1</b>	<b>Introduction.....</b>	<b>1-1</b>
	Contents .....	1-3
<b>Chapter 2</b>	<b>To Install the Service Pack .....</b>	<b>2-1</b>
	Preinstallation requirements .....	2-1
	To install the Service Pack.....	2-4
	To install the Tools.....	2-4
	To install the applications.....	2-7
	Post-installation instructions .....	2-12
	Source codes of PMC Service Packs .....	2-13
<b>Chapter 3</b>	<b>Functional Enhancements and Important Solutions .....</b>	<b>3-1</b>
	Distr. PUR: To calculate the average purchase price .....	3-1
	Short description of the enhancement .....	3-1
	New or changed software components.....	3-2
	Customer implication.....	3-2
	Finance ACP: Display invoice information on purchase orders .....	3-2
	Short description of the enhancement .....	3-2
	New or changed software components.....	3-2
	Customer implication.....	3-2
	Finance CMG: 1099 Update - IRS Changes for year 2005.....	3-3
	Short description of the enhancement .....	3-3
	New or changed software components.....	3-3

Customer implication.....3-3

Tools: To enlarge operating system user names .....3-3

    Short description of the enhancement .....3-3

    New or changed software components .....3-3

    Customer implication.....3-3

Tools: password aging .....3-4

    Short description of the enhancement .....3-4

    New or changed software components .....3-4

    Customer implication.....3-4

SSA Baan IVc4: Other .....3-4

# About this Guide

This document is an Installation and Deployment Guide that describes the contents of Service Pack 20 and how to install Service Pack 20 on SSA Baan IVc4. This document is intended for SSA Baan IVc4 installers and system administrators.

This document includes the following chapters:

Chapter 1, "Introduction," briefly describes Service Pack 20 for Baan IVc4.

Chapter 2, "To Install the Service Pack," describes how to install Service Pack 20.

Chapter 3, "Functional Enhancements and Important Solutions," describes the most important functional enhancements and important solutions of Service Pack 20.

## **Send us your comments**

We continually review and improve our documentation. Any remarks/requests for information concerning this document or topic are appreciated. Please e-mail your comments to [documentation@ssaglobal.com](mailto:documentation@ssaglobal.com).

In your e-mail, refer to the document number and title. More specific information will enable us to process feedback efficiently.



# Chapter 1

## Introduction

# 1

Service Pack 20 for SSA Baan IVc4 is intended for users of Baan IVc4.

You can use this Service Pack to upgrade existing installations.

Service Pack 20 contains all bug fixes through November 14, 2005. In addition, Service Pack 20 contains a number of functional enhancements.

You can install the Service Pack by means of the PMC tool on the following hardware platforms:

- UNIX
- Microsoft Windows

You can use the tool to install individual solutions, which you can download from the SSA One Point Support Web site, or to install Service Packs.

The following table lists the extensions and languages for which the Service Pack is available:

Extension	Code				
		Dutch = 1	English = 2	German = 3	French = 4
Standard SSA Baan IVc4		X	X	X	X
Aerospace and Defense and0	And0		X		

Aerospace and Defense and1	And1	X			
Baan Connect Kit 1.1 / 1.2 / 1.3	Bci0	X	X	X	X
Controlling	Cnt0	X	X	X	X
French localization	Fre0	X			X
Italian localization	Itl0	X			
Supply Chain – Italian localization	Its0	X			
Japanese localization	Jap0	X			
North American Automotive Solution	Nas0	X	X	X	
Multicurrency	Mcr0	X			
Nordic localization	Nc20	X			
Netherlands localization	Nl10	X	X		
Supply Chain – Controlling	Sccl	X	X	X	X
Supply Chain	Sch1	X	X	X	X
iCRM integration	Crm0	X	X	X	X
Automotive Global Solution	Ags0	X	X	X	X
Automotive Global Solution release 2	Ags2	X	X		
Aftermarket Service Parts Solution	Ams0	X			
German Localization (on Standard)	Ger0			X	
German Localization (on Supply Chain)	Scf0			X	
Finance Brush Up (on Standard)	Fbu3			X	
Finance Brush Up (on AGS0)	Fba3			X	
Finance Brush Up (on AGS2)	F3a2			X	

Availability of translations to other languages is published under solution number 208482 on the SSA One Point Support Web site.



## Contents

The Service Pack consists of 2 CD-ROMs that contain the following files and folders:

- B40c4\_SP20 folder (on both CD-ROMs)  
This folder contains all the files required to update the SSA Baan IVc4 software. The folder contains the following files:
  - stb40c4\_20stnd (CD1)  
Contains fixes for Tools.
  - spb40c4\_20stnd (CD1)  
Contains fixes for the standard application software.
  - spb40c4\_20and0 (CD2)  
Contains fixes for the Aerospace and Defense 2.2c extension.
  - spb40c4\_20and1 (CD2)  
Contains fixes for the Aerospace and Defense and1 extension.
  - spb40c4\_20ags0 (CD1)  
Contains fixes for the Automotive Global Solution extension.
  - spb40c4\_20ags2 (CD1)  
Contains fixes for the Automotive Global Solution extension release 2.
  - spb40c4\_20ams0 (CD2)  
Contains fixes for the Aftermarket Service Parts Solution extension.
  - spb40c4\_20bci0 (CD2)  
Contains fixes for the Baan Connect Kit extension.
  - spb40c4\_20cnt0 (CD1)  
Contains fixes for the Controlling extension.
  - spb40c4\_20crm0 (CD1)  
Contains fixes for the iCRM integration extension.
  - spb40c4\_20f3a2 (CD2)  
Contains fixes for the Finance Brush Up extension (on AGS2).
  - spb40c4\_20fba3 (CD2)  
Contains fixes for the Finance Brush Up extension (on AGS0).
  - spb40c4\_20fbu3 (CD2)  
Contains fixes for the Finance Brush Up extension (on standard).
  - spb40c4\_20fre0 (CD2)  
Contains fixes for the French localization.

- spb40c4\_20ger0 (CD2)  
Contains fixes for the German localization (on standard).
- spb40c4\_20itl0 (CD2)  
Contains fixes for the Italian localization.
- spb40c4\_20its0 (CD2)  
Contains fixes for the Supply Chain - Italian localization.
- spb40c4\_20jap0 (CD1)  
Contains fixes for the Japanese localization.
- spb40c4\_20mcr0 (CD2)  
Contains fixes for the Multicurrency extension.
- spb40c4\_20nas0 (CD1)  
Contains fixes for the North American Automotive Solution extension.
- spb40c4\_20nc20 (CD2)  
Contains fixes for the Nordic localization.
- spb40c4\_20scc1 (CD1)  
Contains fixes for the Supply Chain-Controlling extension.
- spb40c4\_20scf0 (CD2)  
Contains fixes for the German localization (on Supply Chain).
- spb40c4\_20sch0 (CD1)  
Contains the first set of fixes for the Supply Chain extension.
- spb40c4\_20sch1 (CD1)  
Contains the second set of fixes for the Supply Chain extension.
- Documentation folder (CD1):  
The documentation folder of the Service Pack CD-ROM contains the following documentation:
  - *Installation and Deployment Guide for Service Pack 20* (U8996A US)
  - Release Notes folder with modified component and solved defect overviews, which includes the following:
    - Relnotes\_stnd.doc, which contains a textual description of solved defects for the standard application software.
    - Relnotes\_tools.doc, which contains a textual description of solved defects for the tools software.
    - Relnotes\_xxxx.doc, which contains a textual description of solved defects for the software of each of the extensions and localizations.

- Componentlist\_xxxx.xls, which contains an overview of modified components.
- Solutions\_xxxx.txt, which contains an enumeration of solution numbers included in the Service Pack.

The textual descriptions of solved defects and the overviews of modified components and solution numbers are created for each of the products: standard, tools, localization, or extension, in which xxxx denotes the relevant localization or extension.

The Release Notes documents with the textual descriptions of solved defects for each of the extensions and localizations are now organized differently as compared to Service Pack 19. The Release Notes documents only contain descriptions of those solutions that are specifically built in the related extension or localization. Solutions that are solved in the standard software or in a derived extension or localization and are ported to the related extension or localization are not included in the Release Notes document.

- VERSION.txt  
Contains the identification of the CD-ROM.



---

## Chapter 2

### To Install the Service Pack

# 2

#### Preinstallation requirements

Before you can install Service Pack 20, you must have Service Pack 19 and earlier Service Packs for Baan IVc4 installed.

Before you install the tools part of the Service Pack, you must have porting set 6.1c.07.08 or a later release of the porting set installed. The porting set is not included in the Service Pack. Therefore, you must order the porting set separately, or download the porting set from solution 15219 on the SSA One Point Support Web site.

Before you install the Service Pack, you must first run the Convert to Runtime Data Dictionary (ttadv5215m000) session for the full range of package combinations, packages, and tables. Select all of the check boxes in this session.

The following table contains an indication of details such as the minimum disk space required and provides an indication of the time required to carry out a successful installation:

<b>Product</b>	<b>Number of solutions</b>	<b>Uninstall (MB)</b>	<b>Install (MB)</b>	<b>Total (MB)</b>	<b>Installation Time (hh:mm)</b>
Standard	458	49.6	71.2	120.8	0:32
Tools	87	2.0	6.5	8.5	0:02
And0	260	29.7	48.6	78.3	0:06
And1	325	35.6	60.5	96.1	0:09
Ags0	309	38.7	60.1	98.8	0:08
Ags2	322	38.9	60.0	98.9	0:07
Ams0	155	21.4	37.5	58.9	0:03
Bci0	87	8.2	16.3	24.5	0:02
Cnt0	167	16.4	31.4	47.8	0:03
Crm0	81	7.8	13.1	20.9	0:01
Fre0	24	1.0	2.1	3.1	0:01
Itl0	197	20.8	33.1	53.9	0:04
Its0	201	26.3	41.0	67.3	0:03
Jap0	105	10.2	20.2	30.4	0:02
Mcr0	315	40.4	61.9	102.3	0:07
Nas0	124	16.2	27.9	44.1	0:03
Nc20	58	7.0	11.0	18.0	0:01
NI10	0	0.0	0.0	0.0	0:00
Scc1	182	21.6	37.8	59.4	0:03
Sch0	348	35.2	55.3	90.5	0:07
Sch1	301	32.1	47.5	79.6	0:06
<b>Total</b>	<b>4106</b>	<b>459.1</b>	<b>743.0</b>	<b>1202.1</b>	<b>1:50</b>

**Note:** The figures in this table are merely indicative. No rights can be derived from the table. The installation time strongly depends on factors such as the following:

- The operating system and database you use
- The number of solutions that are part of the current Service Pack that are already installed as individual solutions
- The size of the tables to be reconfigured
- Whether you save components during the installation process

The figures used in the previous table are based on an installation performed using the following configuration:

- Operating System: HP-UX 11.11
- CPU: 2
- Memory: 3 GB RAM
- Database: BISAM
- Other: flag 'Save Components' in PMC active.

**Note:** The installation of Service Pack 20 was performed on a system different from the Service Pack 19 installation. As a result, this change in system can impact the figures in the previous table. The German localization/Finance Brush Up extensions were not installed and the figures for these extensions are not included.

The Installation Time column represents the time to install the specified PMC patches. Scanning the patches, check to install for the patches and the convert to runtime data dictionary are not included in these figures.

A minimum of 6 megabytes (MB) disk space is required for the runtime software components in the Update VRC directory for the standard software.

This directory is the directory defined in the Maintain Directories of Software Components (ttadv1115m000) session. The required disk space for the runtime software components in the Update VRC directories for the extensions and localizations has not been measured. The expectation is that each extension or localization requires a maximum of 2 MB on average. The required disk space increases if B-languages are installed.

## To install the Service Pack

Before you install the Service Pack 20, first check if any last minute information is available about Service Pack 20 and the installation of this Service Pack. You can find this information on the SSA One Point Support Web site under solution number 208478.

For the standard SSA Baan IVc4 software, two dumps are created: one for Tools and one for the application. The Tools solutions are in a PMC dump called stb40c4\_20stnd, whereas the application solutions are in a dump called spb40c4\_20stnd. The reason for this is because the PMC dump for Tools must be scanned in the Base VRC for the standard software, but the components are actually installed in the unique tools VRC B40 c4. For Tools, you cannot have an Update VRC. Therefore, the Tools components are always imported in the unique Tools VRC B40 c4, which is the live VRC. You cannot have a test VRC for Tools.

During the installation of the Service Pack, you can specify the sequence of the Tools and applications installations. You can first install the Tools dump and later the application dumps, or first install the application dumps and later the Tools dump. No dependency exists between these dumps. For best results, SSA Global recommends that you install the Tools dump first, and then install the Application dumps, however, you can also choose to install the Application dumps first and then the Tools dump.

For best results, install Tools and applications at the same time, however, if required, you can choose to install applications and Tools at separate times.

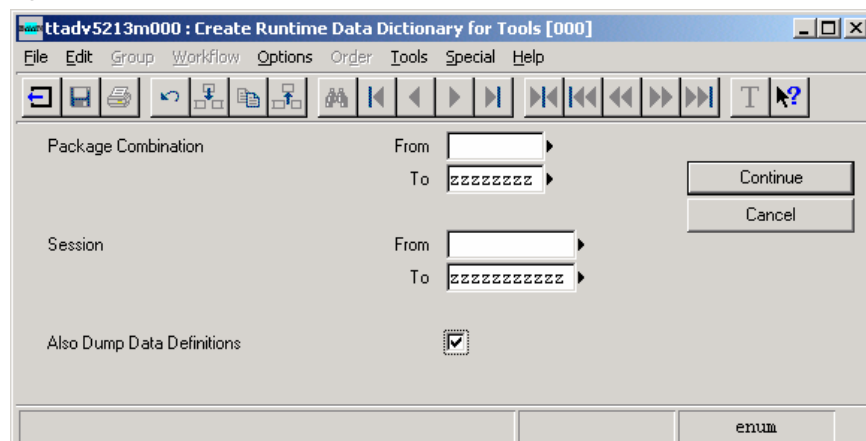
## To install the Tools

To install the Tools part of Service Pack 20 for SSA Baan IVc4, take the following steps:

- 1 [For UNIX users] Copy the file stb40c4\_20stnd from the B40c4\_SP20 folder of the CD-ROM to a temporary directory on the UNIX system. To copy the files, you must use a transfer protocol in binary mode. If you have the facility to mount a CD-ROM to your UNIX platform, transfer of files from the CD-ROM to the UNIX system is unnecessary. In this case, you can simply install directly from the CD-ROM. For information on how to mount a CD-ROM to your UNIX system, refer to the documentation from your hardware vendor.
- 2 Scan the PMC dump stb40c4\_20stnd through the Scan Solution File (ttpmc2200m000) session.

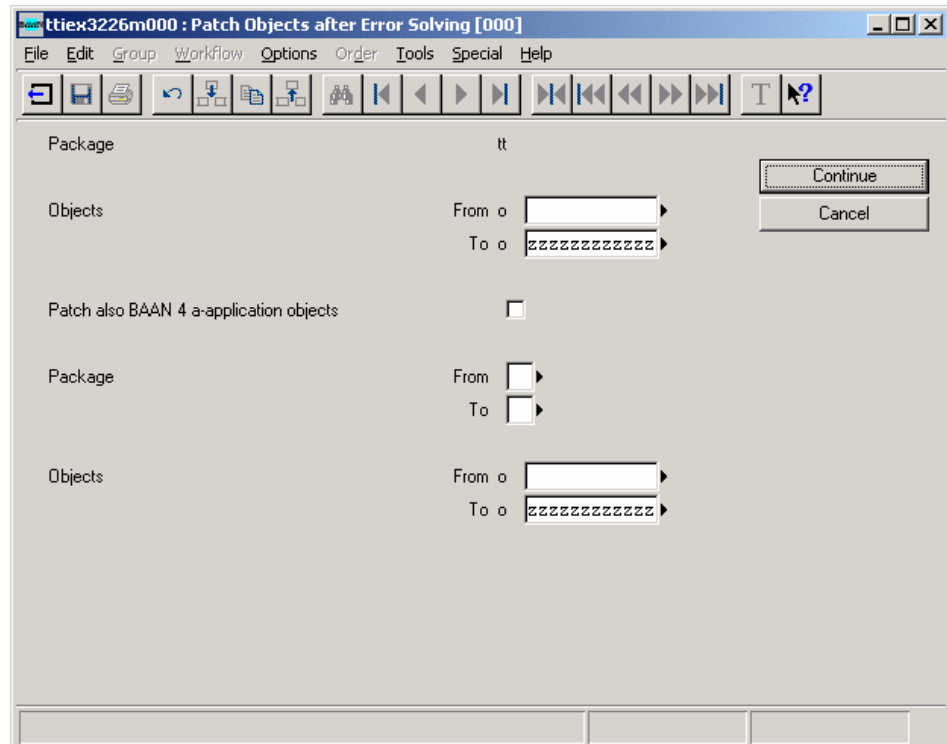


- 3 Select the Overwrite check box.
- 4 Make sure that all users now exit the environment in which you want to install the Service Pack.
- 5 Run the Process Solutions (ttpmc2101m000) session to process the PMC dump stb40c4\_20. This session consists of two parts: the Check Solution to Install (ttpmc2203s000) session and the Install Solution (ttpmc2205s000) session.
- 6 In the Install Solution session, select the Preinstallation Instructions Followed Up check box, otherwise, the Service Pack will not install.
- 7 Start the Create Runtime Data Dictionary for Tools (ttadv5213m000) session for all package combinations.
- 8 Select the Also Dump Data Definitions check box, as shown in the following figure:



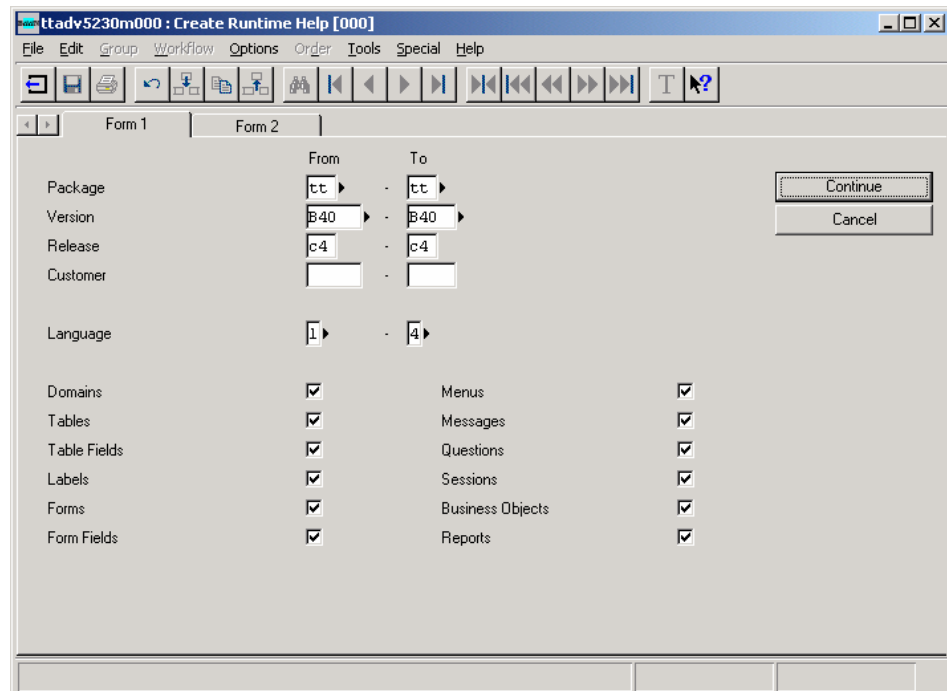
- 9 Exit the bshell.
- 10 If Baan Tools components are loaded in shared memory, stop and restart the shared memory.
- 11 Restart the bshell.

- 12 Start the Patch Objects after Error Solving (ttiex3226m000) session for all Baan Tools objects, as shown in the following figure:



- 13 If you use the ASCII help viewer, run the Create Runtime Help (ttadv5230m000) session for the tools VRC B40 c4 and the languages that you us.

- 14 Select the check boxes as shown in the following figure:



- 15 Exit and restart the bshell. The installation of the tools part of the Service Pack is ready.
- 16 If you do not want to continue with the installation of the application part of the Service Pack, all users can start to use the environment. If you do want to continue with the installation of the application part of the Service Pack, continue with the following steps.

### To install the applications

To install the applications part of Service Pack 20 for SSA Baan IVc4, take the following steps:

- 1 [For UNIX users] Copy the files from the B40c4\_SP20 folder of the CD-ROM to a temporary directory on the UNIX system. To copy the files, you must use a transfer protocol in binary mode.

The size of the dumps in this folder is approximately 770 MB. You do not need to transfer all files. In Step 2, you can see which files are required for your software version.

If you have the facility to mount a CD-ROM to your UNIX platform, transfer of files from the CD-ROM to the UNIX system is unnecessary. In this case, you can install directly from the CD-ROM.

For information on how to mount a CD-ROM to your UNIX system, refer to the documentation from your hardware vendor.

- 2 Scan the PMC dumps through the Scan Solution File (ttpmc2200m000) session. In this session, you must select the Overwrite check box. The PMC dumps that you must scan depend on the extensions that you use in your package combinations.

You must always scan the PMC dump for the standard software (spb40c4\_20stnd). In addition, you must scan one or more PMC dumps, depending on the extension that you use, as shown in the following table:

Extension	Code	PMC dumps needed
Aerospace and Defense and0	And0	spb40c4_20and0
Aerospace and Defense and1	And1	spb40c4_20and1
Baan Connect Kit 1.1 / 1.2 / 1.3	Bci0	spb40c4_20bci0
Controlling	Cnt0	spb40c4_20cnt0
French localization	Fre0	spb40c4_20fre0
Italian localization	Itl0	spb40c4_20itl0
Supply Chain – Italian localization	Its0	spb40c4_20its0 spb40c4_20sch0 spb40c4_20sch1
Japanese localization	Jap0	spb40c4_20jap0
North American Automotive Solution	Nas0	spb40c4_20nas0 spb40c4_20sch0 spb40c4_20sch1
Multicurrency	Mcr0	spb40c4_20mcr0
Nordic localization	Nc20	spb40c4_20nc20
Netherlands localization	Nl10	None (no solutions were created in the nl10 localization)

Supply Chain – Controlling	Scc1	spb40c4_20cnt0 spb40c4_20sch0 spb40c4_20sch1 spb40c4_20scc1
Supply Chain	Sch1	spb40c4_20sch0 spb40c4_20sch1
iCRM integration	Crm0	spb40c4_20crm0
Automotive Global Solution	Ags0	spb40c4_20ags0 spb40c4_20cnt0
Automotive Global Solution release 2	Ags2	spb40c4_20ags2 spb40c4_20cnt0
Aftermarket Service Parts Solution	Ams0	spb40c4_20ams0 spb40c4_20ags2 spb40c4_20cnt0
German Localization (on Standard)	Ger0	spb40c4_20ger0 spb40c4_20cnt0 *)
German Localization (on Supply Chain)	Scf0	spb40c4_20scf0 spb40c4_20cnt0 spb40c4_20sch0 spb40c4_20sch1 spb40c4_20scc1 spb40c4_20ger0
Finance Brush Up (on Standard)	Fbu3	spb40c4_20fbu3 spb40c4_20cnt0 *) spb40c4_20ger0
Finance Brush Up (on AGS0)	Fba3	spb40c4_20fba3 spb40c4_20cnt0 spb40c4_20ags0

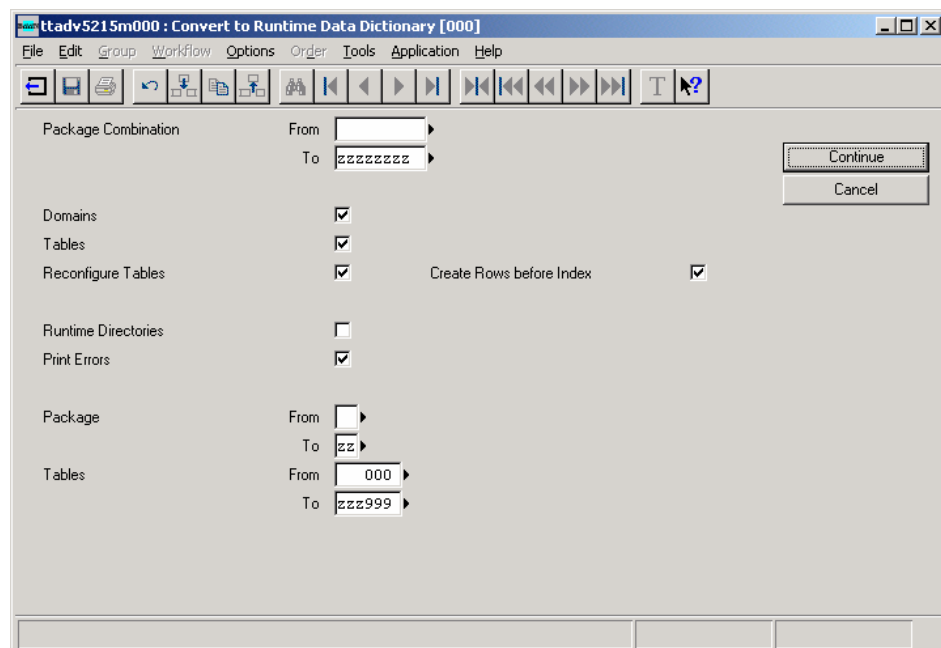
---

Finance Brush Up (on AGS2)	F3a2	spb40c4_20f3a2
		spb40c4_20cnt0
		spb40c4_20ags2
		spb40c4_20fba3

---

\*) **Note:** Installation of the cnt0 extension is not mandatory if you use the German localization or finance brush-up extension, ger0 or fbu3.

- 3 Make sure that all users now exit the environment in which you want to install the Service Pack.
- 4 Run the Process Solutions (ttpmc2101m000) session to process the PMC dumps that you scanned in Step 2. This session consists of two parts: the Check Solution to Install (ttpmc2203s000) session and the Install Solution (ttpmc2205s000) session.
- 5 In the Install Solution session, select the Preinstallation Instructions Followed Up check box, otherwise, the Service Pack will not install.
- 6 Start the Convert to Runtime Data Dictionary (ttadv5215m000) session for all package combinations.
- 7 Select all of the check boxes in this session to reconfigure the tables, because some tables were modified for bug fixing.



- 8 Exit and restart the bshell.

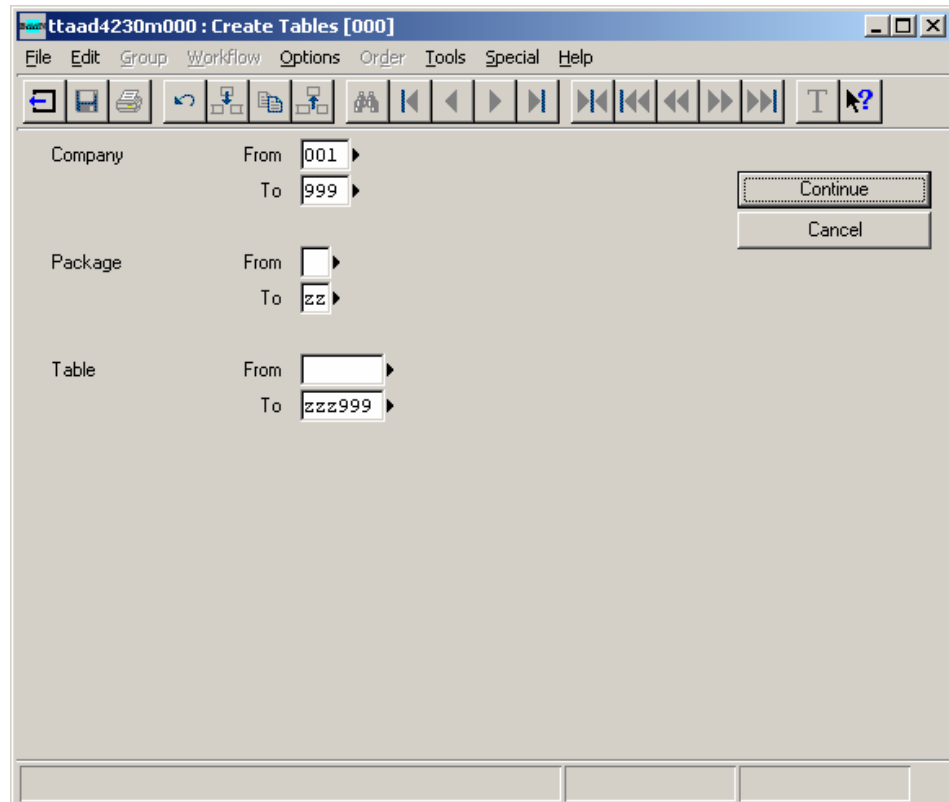
- 9 If you use the ASCII help viewer, run the Create Runtime Help (ttadv5230m000) session for the languages and update VRCs that you use.
- 10 Select the check boxes as shown in the following figure:

	From	To
Package		zz
Version	B40U	B40U
Release	c4	c4
Customer		zzzz
Language	1	4

Domains	<input checked="" type="checkbox"/>	Menus	<input checked="" type="checkbox"/>
Tables	<input checked="" type="checkbox"/>	Messages	<input checked="" type="checkbox"/>
Table Fields	<input checked="" type="checkbox"/>	Questions	<input checked="" type="checkbox"/>
Labels	<input checked="" type="checkbox"/>	Sessions	<input checked="" type="checkbox"/>
Forms	<input checked="" type="checkbox"/>	Business Objects	<input checked="" type="checkbox"/>
Form Fields	<input checked="" type="checkbox"/>	Reports	<input checked="" type="checkbox"/>

- 11 Start the Create Tables (ttaad4230m000) session to create the new tables that were added to the Service Pack. The session then physically creates the new tables.



- 12 Exit and restart the bshell. The installation of the Service Pack is complete. After you perform the post-installation procedure, the users can start to use the environment.

## Post-installation instructions

After you install the Service Pack, take the following steps:

- 1 Run the Generate Planned Orders (tppss6200m000) and the Rebuild Planned Inventory transactions (tdinv0250m000) sessions to ensure that the data in the Planned Inventory transactions by item (tdinv1550m000) session is built again correctly.

This step is only relevant if you use Warehouse orders in combination with the Project module and if you did not install solution 201952 before you installed the Service Pack.

For more information, refer to solution 201952.



- 2 Install an update for SSA eProcurement 2.5 from solution 205544. For more information, refer to solutions 203895 and 205544.

This step is only relevant if you use the interface with SSA eProcurement 2.5 and if you did not install solution 203895 before you installed the Service Pack.

- 3 Install a new Office Integration client and Office Integration executable. For more information, refer to solutions 203199, 203301, and 205204.

This step is only relevant if you use the Office Integration for Baan IVc4 and if you did not install solutions 203199, 203301, and 205204 before you installed the Service Pack.

- 4 Run the Correct Contracts for Advance Payments (tpcor9256m000) session.

This step is only relevant if you use the Advance Payments functionality in the AND1 extension and solution 204483 was not installed before you installed the Service Pack.

For more information, refer to solution 205531.

The following correction programs are delivered for this Service Pack. Refer to the related solution texts to check if you must run these correction programs:

- Update Sales Order Line History (tdcor9519m000). Solution 204313.

## Source codes of PMC Service Packs

Solutions and Service Packs that SSA Global creates and installs through the PMC tool have the source code of modified components included. However, the source codes of program scripts, libraries, and functions are only installed if a previous version of the source code of the component exists in the environment in which the solution or Service Pack is installed.

For example, if a fix is produced for solution 71291 in the program script tdilc4202, the PMC dump for this solution contains the program script source and the program object.

This solution is installed at system X in the update VRC B40U\_c4\_stnd. Before you install the program script source, the PMC tool checks whether the program script source exists in the update VRC, or in a VRC that is in the derived-from structure for the update VRC.

If the program script source of tdilc4202 already exists, the new program script source and the program object are installed from the PMC dump of the solution. If the program script source is not found, only the program object is installed.

Before you begin the installation of a solution or Service Pack through PMC, SSA Global alliances or customers who need the source codes must make sure that the sources exist in the environment in which the solutions or Service Packs are installed.

---

## Chapter 3

# Functional Enhancements and Important Solutions

# 3

This chapter describes the most important functional enhancements and solutions for Service Pack 20. The following enhancements and important solutions are introduced:

- Distr. PUR: calculating the Average Purchase Price
- Finance ACP: Display Invoice Information on Purchase Orders
- Finance CMG: 1099 Update - IRS Changes for year 2005
- Tools: Enlarging OS Usernames
- Tools: Password Aging
- SSA Baan IVc4: Other

## Distr. PUR: To calculate the average purchase price

### Short description of the enhancement

After solution 126963 return orders are excluded from the calculation of the average purchase price, whereas the return orders were included in the calculation of the average purchase price before this solution. Flexibility is required so that customers can decide if they want to include or exclude return orders in the calculation of the average purchase price.

You can control the functionality using the new Include Return Orders for Average Pur. Price check box in the Maintain Purchase Order Parameters (tdpur4100m000) session.

By default, this new check box is cleared, which equals the current situation. Therefore, nothing changes unless the user changes the value of this new parameter.

You can use the Correction of Average Purchase Price (tdcor4227m000) session to correct the average purchase price. This correction program uses the current parameter settings to calculate the average purchase price for an item.

### New or changed software components

For a detailed overview of new or changed software components, refer to solution 205339 in the document componentlist\_stnd.

### Customer implication

You can begin to use this enhancement immediately.

## Finance ACP: Display invoice information on purchase orders

### Short description of the enhancement

New functionality is built to display invoice information based on the purchase order number. For that purpose, the Display Invoice Information on Purchase Orders (tfacp2540m100) session is created. To start the session, on the Finance menu, click Accounts Payable → Open Entries → Inquiries.

### New or changed software components

For a detailed overview of new or changed software components, refer to solution 204300 in the document componentlist\_stnd.

### Customer implication

You can begin to use this enhancement immediately.

## Finance CMG: 1099 Update - IRS Changes for year 2005

### Short description of the enhancement

Changes are being made to improve 1099 processing for 2005. Most important improvement is the ability to create alphanumeric box numbers, required for box numbers 15a and 15b.

### New or changed software components

For a detailed overview of new or changed software components, refer to solution 203108 in the document componentlist\_std.

### Customer implication

You can begin to use this enhancement immediately.

## Tools: To enlarge operating system user names

### Short description of the enhancement

The Baan software did not accept operating system user names greater than eight characters in length, while most modern operating systems support longer user names. The Change Length of OS User Names (ttaad2220m0000) session is now available, with which an administrator can define the new length for OS user names.

### New or changed software components

For a detailed overview of new or changed software components, refer to solution 200463 in the document componentlist\_tools.

### Customer implication

To implement this enhancement, follow the instructions in solution 200463.

## Tools: password aging

### Short description of the enhancement

The Password Aging functionality is implemented for both UNIX and Windows platforms. This functionality is not Webtop enabled.

### New or changed software components

For a detailed overview of new or changed software components, refer to solution 203302 in the document componentlist\_tools.

### Customer implication

To implement this enhancement, follow the instructions in solutions 203302 and 119781.

## SSA Baan IVc4: Other

The following table provides an overview of other minor functional modifications and optimizations in the Service Pack. For more details, refer to the detailed solution descriptions of the relevant solutions in the Release Notes documents in the Documentation folder of the CD-ROM.

Area / Extension	Solution	Description
Common Data	202436 and 205809	IBAN check is now supported for Former Yugoslav Republic of Macedonia, Croatia, Serbia and Montenegro, and Turkey, according to the European Central Bank specification of IBAN document TR201
EDI	203253	Parameter to include the order discount in the EDI sales invoice lines
EDI	204741	Parameter to support the use of multiple Item code systems per customer in EDI outgoing item conversion through the item codes by item code system.

Distr. CMS	141900	Option to choose a transaction date to process commissions and rebates in the Process Commissions/Rebates (tdcms2201m000) session
Distr. CMS	167907 and 168166	CMS creates one commission/rebate record for each invoice if the commission/rebate amount is calculated by a percentage, and not a fixed amount. Relations are linked by order, and commission/rebates are calculated by invoice or paid invoice.
Distr. INV/ILC	203507	An option is available to select the sequence number of a cycle counting order in the Print Warehouse Stocktaking Check Report (tdinv1421m000) and Print Cycle Counting Check Report (tdilc5411m000) sessions
Distr. ILC	204569	An option is available to select on warehouse and order date in the Print Cycle Counting Orders (tdilc5410m000) session
Distr. PUR	149129	Surcharges are always posted as results if receipts are maintained in the Maintain Receipts (tdpur4120m000) session, irrespective of item type used for the purchase order
Distr. PUR	202775	The EDI dispatch advice is deleted when the related purchase orders are processed in the Process Delivered Purchase Orders (tdpur4223m000) session
Distr. PUR	203655	A new parameter, Back Order Quantity from EDI Allowed, is introduced in purchase order parameters. This parameter enables the user to determine whether back order quantity is calculated or not when EDI dispatch advice is used in purchase receipts.
Distr. PUR	204874	The buyer is now printed on the Purchase Inquiry in the Print Purchase Inquiry (tdpur1401m000) session.

Distr. PUR / eProcurement	203895	A different method of handling deletion of purchase orders by eProcurement if eProcurement fails to insert an order line.
Distr. RPL	202193	An option to select an order range is given to user in the Process/Delete Delivered Replenishment Orders (tdrpl2126m000) session.
Distr. SLS	204200	The relations (commission or rebate) are no longer automatically linked after the user removes the relations manually in the Maintain Sales Order Lines (tdsls4102s000) session.
Distr. SLS	206059	A parameter is available to specify if prices and discounts for sales and purchase orders will be calculated with positive quantities only or with both positive and negative quantities.
Finance ACP	203235	An indicator to withhold tax on construction work is added and is adjustable in the Maintain Purchase Invoice Details (tfacp2100m000) session
Finance ACP	203567	A different way to define currency rate for invoice approval related to cost items in the Approve Purchase Invoices (tfacp1140s000) session
Finance ACP	205334	A new report with totals in order currency is added to the Print Receivable Invoice Specifications - Logistical (tfacp1432m000) session
Finance ACP	205767	A parameter is available to enable you to accept values in the Accept values of GRINYA Reconciliation (tfacp1535m000) session at order-line level.
Finance CMG	202756	You can no longer link an invoice to an unallocated receipt in a period prior to the period in which the unallocated receipt was created.



Finance CMG	203283	If the user changes the status of the anticipated document, a message appears with the newly created document number, along with transaction type
Finance CMG	203338	You can no longer change the fiscal year in the Maintain Bank Transactions (tfcmg2100s000) session
Finance CMG	203707	You can link a partial receipt to a pro forma invoice if the receipt amount is greater than the invoice amount in the Link Advance Receipts to Pro Forma Invoice (tfcmg6200m000) session.
Finance CMG	204542	A new check report, UK Cheques, is added to the Transfer Payments (tfcmg1260s000) session.
Finance CMG	204613	An option is available to include or exclude sales invoices with a problem code in the cash forecast.
Finance GLD	205939	A different method is available to define line numbers and serial numbers for transactions created from a transaction schedule in the Finalization Process (tfgld1212s000) session.
Manuf. CST	203808	An improvement is included to select and transfer multiple lines in the Enter Material Issue for Production Order (ticst0101m000) session.
Manuf. SFC	202210	An additional sort option by production order start date is provided to issue materials for production orders in the Initiate Inventory Issue (tisfc0207m000) session.
Project PDM	203499	An option is available to print appointments by date in the Appointments by Estimate (tpedm4432m000) and Appointments by Project (tpedm6432m000) sessions.
Project PPC	205446	Turnover by customer is now updated in the Process Transactions (tpppc4802m000) session.

Project PTC	205864	A new Step Size field is added to the Maintain Parent Element (tpptc1102s000) session. Based on the value of this new field, the sequence number of the included element will be incremented.
Utilities DDC	166006	Functionality is included to delete DDC message guarantee keys based on date range.
Tools PMC	204817	New session to display solutions by component in the PMC Distributor module,
Ags0/ags2 extension	205008	A new Print Excess Transportation Reason Codes by Customer (tdssc0494m000) session is created.
Ags0/ags2 extension	205126	An option to zoom to the container info and special charges in the Display Sales Contracts (tdssc0501m000) session.
Ags0/ags2/sch1/nas0 extension	204554	Information was not or incompletely written to the EDI outgoing remittance advice message.
And0/and1 extension	203938	New functionality to define run numbers if OCA runs multiple times each day.
And0/and1 extension	205285 and 205396	Flexibility to define order series in the Split Production Order (tisfc0209m00b) session.
And1 extension	204483	Contract advance invoices can now be created both at Contract and CLIN level in the Maintain Contracts (tppdm9156m00b) session.
Mcr0 extension	203120	The Currency Initialization (tccri) sessions are enhanced to work for the MCR environment.
Mcr0 extension	205221	A parameter is available to avoid rounding problems in the Close Year (tfgld6203m000) session.