



▶▶ **SSA® Baan IVc4**

Installation and Deployment Guide for Service Pack 17

Copyright © 2004 by Baan International B.V., a subsidiary of SSA Global Technologies, Inc.

All rights reserved. No part of this publication may be reproduced, stored in a retrieval system, or transmitted in any way or by any means, including, without limitation, photocopying or recording, without the prior written consent of BaanTM International B.V.

Important Notices

The material contained in this publication (including any supplementary information) constitutes and contains confidential and proprietary information of Baan International B.V.

By gaining access to the attached, you acknowledge and agree that the material (including any modification, translation or adaptation of the material) and all copyright, trade secrets and all other right, title and interest therein, are the sole property of Baan International and that you shall not gain right, title or interest in the material (including any modification, translation or adaptation of the material) by virtue of your review thereof other than the non-exclusive right to use the material solely in connection with and the furtherance of your license and use of software made available to your company from Baan International pursuant to a separate agreement ("Purpose").

In addition, by accessing the enclosed material, you acknowledge and agree that you are required to maintain such material in strict confidence and that your use of such material is limited to the Purpose described above.

Although Baan International has taken due care to ensure that the material included in this publication is accurate and complete, Baan International cannot warrant that the information contained in this publication is complete, does not contain typographical or other errors, or will meet your specific requirements. As such, Baan International does not assume and hereby disclaims all liability, consequential or otherwise, for any loss or damage to any person or entity which is caused by or relates to errors or omissions in this publication (including any supplementary information), whether such errors or omissions result from negligence, accident or any other cause.

Baan International B.V., is a wholly owned subsidiary of SSA® Global TechnologiesTM, Inc.

Trademark Acknowledgments

SSA Global, SSA and the SSA Global logo are trademarks of SSA Global Technologies, Inc. in the United States and/or other countries. Baan is a trademark of Baan International B.V., in the United States and/or other countries.

All other company, product, trade or service names referenced may be registered trademarks or trademarks of their respective owners.

Publication Information

Document code	: U8491A US
Release	: SSA® Baan IVc4
Document title	: Installation and Deployment Guide for Service Pack 17
Publication date	: September 04

Table of Contents

Chapter 1	Introduction	1-1
	Contents	1-3
Chapter 2	To install the Service Pack	2-1
	Preinstallation requirements	2-1
	To install the Service Pack	2-4
	To install the Tools.....	2-4
	To install the applications	2-7
	Post-installation instructions	2-11
	Source codes of PMC Service Packs	2-13
Chapter 3	Functional enhancements and important solutions	3-1
	Fin. GLD: Audit capability in Import Journal Vouchers by Batch ID Number (tfgld2215m000)....	3-2
	Manuf. PCF: BOM data for E-Configuration Enterprise Modeler.....	3-2
	Invoices (all): Implementation of Canadian HST tax.....	3-3
	DEM: DEM in combination with Webtop	3-4
	Automotive: New SSC parameter for Shipment Warehouse Only.....	3-4
	Aerospace & Defense (AND0/AND1): Permanent transfer of labor	3-6
	SSA Baan IVc4: Other.....	3-7

About this Guide

This document is an Installation and Deployment Guide that describes the contents of Service Pack 17 and how to install Service Pack 17 on SSA Baan IVc4. This document is intended for SSA Baan IVc4 installers and system administrators.

This document includes the following chapters:

Chapter 1, "Introduction," briefly describes Service Pack 17 for Baan IVc4.

Chapter 2, "To install the Service Pack," describes how to install Service Pack 17.

Chapter 3, "Functional enhancements and important solutions," describes the most important functional enhancements and important solutions of Service Pack 17.

Send us your comments

We continually review and improve our documentation. Any remarks/requests for information concerning this document or topic are appreciated. Please e-mail your comments to kd@baan.com.

In your e-mail, refer to the document number and title. More specific information will enable us to process feedback efficiently.

Chapter 1

Introduction

1

Service Pack 17 for SSA Baan IVc4 is intended for users of SSA Baan IVc4.

You can use this Service Pack to upgrade existing installations.

Service Pack 17 contains all bug fixes up to July 11, 2004. In addition, Service Pack 17 contains a number of functional enhancements.

You can install the Service Pack by means of the PMC tool on the following hardware platforms:

- UNIX
- Microsoft Windows

You can use the tool to install individual solutions, which you can download from the SSA One Point Support (Baan) Web site, or to install Service Packs.

The following table lists the extensions and languages for which the Service Pack is available:

Extension	Code	Dutch = 1	English = 2	German = 3	French = 4
Standard SSA Baan IVc4		X	X	X	X
Aerospace and Defense and0	And0		X		
Aerospace and Defense and1	And1		X		
Baan Connect Kit 1.1 / 1.2 / 1.3	Bci0	X	X	X	X
Controlling	Cnt0	X	X	X	X
French localization	Fre0		X		X
Italian localization	Itl0		X		
Supply Chain – Italian localization	Its0		X		
Japanese localization	Jap0		X		
North American Automotive Solution	Nas0		X	X	X
Multicurrency	Mcr0		X		
Nordic localization	Nc20		X		
Netherlands localization	NI10	X	X		
Supply Chain – Controlling	Scc1	X	X	X	X
Supply Chain	Sch1	X	X	X	X
iCRM integration	Crm0	X	X	X	X
Automotive Global Solution	Ags0	X	X	X	X

The availability of other languages will be published at a later stage on the SSA One Point Support (Baan) Web site. Availability of these translations is published under solution number 144854.

Contents

The Service Pack CD-ROM contains the following files and folders:

- B40c4_SP17 folder:
This folder contains all the files that are required to update the SSA Baan IVc4 software. The folder contains the following files:
 - stb40c4_17stdn:
This file contains fixes for Tools.
 - spb40c4_17stdn:
This file contains fixes for the standard application software.
 - spb40c4_17and0:
This file contains fixes for the Aerospace and Defense 2.2c extension.
 - spb40c4_17and1:
This file contains fixes for the Aerospace and Defense and1 extension.
 - spb40c4_17ags0:
This file contains fixes for the Automotive Global Solution extension.
 - spb40c4_17bci0:
This file contains fixes for the Baan Connect Kit extension.
 - spb40c4_17cnt0:
This file contains fixes for the Controlling extension.
 - spb40c4_17crm0:
This file contains fixes for the iCRM integration extension.
 - spb40c4_17fre0:
This file contains fixes for the French localization.
 - spb40c4_17itl0:
This file contains fixes for the Italian localization.
 - spb40c4_17its0:
This file contains fixes for the Supply Chain - Italian localization.
 - spb40c4_17jap0:
This file contains fixes for the Japanese localization.
 - spb40c4_17mcr0:
This file contains fixes for the Multicurrency extension.
 - spb40c4_17nas0:
This file contains fixes for the North American Automotive Solution extension.

- spb40c4_17nc20:
This file contains fixes for the Nordic localization.
- spb40c4_17nl10:
This file contains fixes for the Dutch localization.
- spb40c4_17scc1:
This file contains fixes for the Supply Chain-Controlling extension.
- spb40c4_17sch0:
This file contains the first set of fixes for the Supply Chain extension.
- spb40c4_17sch1:
This file contains the second set of fixes for the Supply Chain extension.
- Documentation folder:
The documentation folder of the Service Pack CD-ROM contains the following documentation:
 - *Installation and Deployment Guide - Service Pack 17 (U8491A US).*
 - Release Notes folder with modified component and solved defect overviews, including the following:
 - Relnotes_std.doc containing a textual description of solved defects for the standard application software.
 - Relnotes_tools.doc containing a textual description of solved defects for the tools software.
 - Relnotes_extn.doc containing a textual description of solved defects for the software of the extensions and localizations.
 - Componentlist_xxxx.xls containing an overview of modified components.
 - Solutions_xxxx.txt containing an enumeration of BSS solution numbers included in the Service Pack.

The overviews of modified components and BSS solution numbers are created for each of the products, either standard, localization, or extension, in which xxxx in the file name stands for the related localization or extension.

The Release Notes document with the textual descriptions of solved defects for the extensions and localizations is now organized differently compared to Service Pack 14 or older Service Packs. The descriptions of all solutions of all extensions and localizations are now in one document.

For each solution, the document provides the solution number and the extensions and localizations to which this solution relates.

- **VERSION.txt:**
A text file that contains the identification of the CD-ROM.

Chapter 2

To install the Service Pack

2

Preinstallation requirements

Before you can install Service Pack 17, you must have Service Pack 16 and earlier Service Packs for SSA Baan IVc4 installed.

Before you install the Service Pack, you must have porting set 6.1c.07.02 or a later release of the porting set installed. The porting set is not included in the Service Pack, therefore, you must order the porting set separately, or download the porting set from solution 15219 on the SSA One Point Support (Baan) Web site.

Note

Installation of the correct version of the porting set is absolutely required. If you use an earlier version of the porting set, you cannot start any session after you install this Service Pack.

If you use the interface between SSA Baan IVc4 and Baan SCS Scheduler, which is part of the Baan Connect Kit extension, and solution 165901 was not installed prior to installing the Service Pack, be sure to export and send all pending transactions to the Scheduler before you install the Service Pack. For background information, refer to solution 165901 in the knowledgebase of the One Point Support (Baan) Web site.

Before you install the Service Pack, you must first run the Convert to Runtime Data Dictionary (ttadv5215m000) session for the full range of package combinations, packages, and tables. Select all of the check boxes in this session.

The following table contains an indication of details such as the minimum disk space required and provides an indication of the time required to carry out a successful installation:

Product	Number of solutions	Uninstall (MB)	Install (MB)	Total (MB)	Installation Time (hh:mm)
Standard	366	36.2	53.8	90.0	0:47
Tools	79	2.0	5.8	7.8	0:05
And0	207	20.5	35.2	55.7	0:19
And1	243	23.8	39.6	63.4	0:22
Ags0	234	25.0	44.9	69.9	0:23
Bci0	71	7.3	14.1	21.4	0:06
Cnt0	114	9.2	17.5	26.7	0:08
Crm0	50	4.6	8.3	12.9	0:03
Fre0	22	1.4	2.7	4.1	0:01
Itl0	152	14.5	23.8	38.3	0:11
Its0	148	16.0	27.1	43.1	0:11
Jap0	73	7.0	14.2	21.2	0:05
Mcr0	257	29.4	43.8	73.2	0:28
Nas0	105	12.4	22.5	34.9	0:11
Nc20	40	4.6	7.6	12.2	0:03
NI10	2	0.1	0.1	0.2	0:00
Scc1	125	11.9	23.6	35.5	0:09
Sch0	265	27.8	45.4	73.2	0:24
Sch1	226	22.5	38.6	61.1	0:18
Total	2,779	276.2	468.6	744.8	4:10

Note

The figures in this table are merely indicative. No rights can be derived from the table. The installation time strongly depends on factors such as the following:

- The operating system and database you use
- The number of solutions that are part of the current Service Pack that are already installed as individual solutions
- The size of the tables to be reconfigured
- Whether you save components during the installation process

The figures used in the previous table are based on an installation performed using the following configuration:

- Operating System: HP-UX 11.00
- CPU: 4
- Memory: 2,048 MB RAM
- Database: BISAM
- Other: flag 'Save Components' in PMC active.

The **Installation Time** column represents the time to install the specified PMC patches. Scanning the patches, check to install for the patches and the convert to runtime data dictionary are not included in these figures.

8 megabytes (MB) disk space is required for the runtime software components in the Update VRC directory for the standard software. This directory is the directory that is defined in the Maintain Directories of Software Components (ttadv1115m000) session. The required disk space for the runtime software components in the Update VRC directories for the extensions and localizations has not been measured. The expectation is that each extension or localization requires a maximum of 4 MB on average. The required disk space increases if B-languages are installed.

To install the Service Pack

Before you install the Service Pack 17, first check if any last minute information is available about Service Pack 17 and the installation of this Service Pack. You can find this information on the SSA One Point Support (Baan) Web site under solution number 144853.

For the standard SSA Baan IVc4 software, two dumps are created: one for Tools and one for the application. The Tools solutions are in a PMC dump called stb40c4_17stnd, whereas the application solutions are in a dump called spb40c4_17stnd. The reason for this is because the PMC dump for Tools must be scanned in the Base VRC for the standard software, but the components are actually installed in the unique tools VRC B40 c4. For Tools, you cannot have an Update VRC. Therefore, the Tools components are always imported in the unique Tools VRC B40 c4, which is the live VRC. You cannot have a test VRC for Tools.

During the installation of Service Pack 17, you cannot decide on the sequence of installing Tools and applications. You must install the Tools dump first and later on the application dumps. A dependency exists between these dumps; therefore you have to install the Tools dumps first for Service Pack 17.

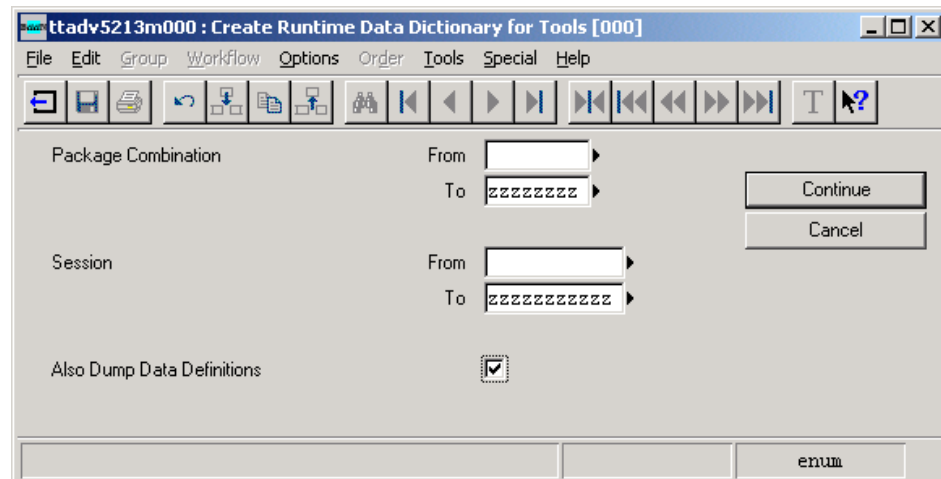
For best results, install Tools and applications at the same time, however, if required, you can choose to install applications and Tools at separate times.

To install the Tools

To install the Tools part of Service Pack 17 for SSA Baan IVc4, take the following steps:

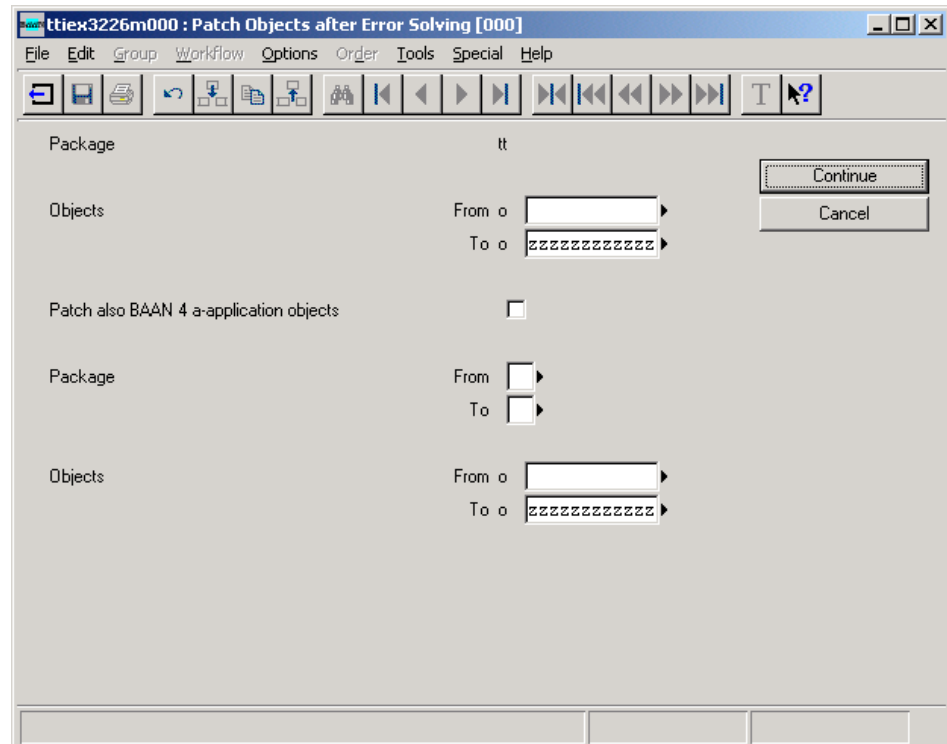
- 1 UNIX users must first copy the file stb40c4_17stnd from the B40c4_SP17 folder of the CD-ROM to a temporary directory on the UNIX system. If you copy the files, you must use a transfer protocol in binary mode. If you have the facility to mount a CD-ROM to your UNIX platform, transfer of files from the CD-ROM to the UNIX system is unnecessary. In this situation, you can install directly from the CD-ROM. For information on how to mount a CD-ROM to your UNIX system, refer to the documentation from your hardware vendor.
- 2 Scan the PMC dump stb40c4_17stnd through the Scan Solution File (ttpmc2200m000) session. In this session you must select the **Overwrite** check box.

- 3 All users must now exit the environment in which the Service Pack will be installed.
- 4 Run the Process Solutions (ttpmc2101m000) session to process the PMC dump stb40c4_17. This session consists of two parts: the Check Solution to Install (ttpmc2203s000) session and the Install Solution (ttpmc2205s000) session. In the Install Solution session, you must select the **Pre-Installation Instructions Followed Up** check box, otherwise, the Service Pack will not install.
- 5 Start the Create Runtime Data Dictionary for Tools (ttadv5213m000) session for all package combinations and select the **Also Dump Data Definitions** check box, as shown in the following figure:



- 6 Exit the bshell. If Baan Tools components are loaded in shared memory, stop and restart the shared memory. Restart the bshell.

- 7 Start the Patch Objects after Error Solving (ttiex3226m000) session for all Baan Tools objects, as shown in the following figure:



- 8 If you use the ASCII help viewer, run the Create Runtime Help (ttadv5230m000) session for the tools VRC B40 c4 and the languages that you are using. Select the check boxes as shown in the following figure:

- 9 Exit and restart the bshell. The installation of the tools part of the Service Pack is ready. All users can now start to use the environment, unless the installation of the application part of the Service Pack is continued immediately.

To install the applications

To install the applications part of Service Pack 17 for SSA Baan IVc4, take the following steps:

- 1 UNIX users must first copy files from the B40c4_SP17 folder of the CD-ROM to a temporary directory on the UNIX system. If you copy the files, you must use a transfer protocol in binary mode. The size of the dumps in this folder is approximately 469 MB. You do not need to transfer all files. In Step 2, you can see which files are necessary for your software version.

If you have the facility to mount a CD-ROM to your UNIX platform, transfer of files from the CD-ROM to the UNIX system is unnecessary. In this situation, you can install directly from the CD-ROM.

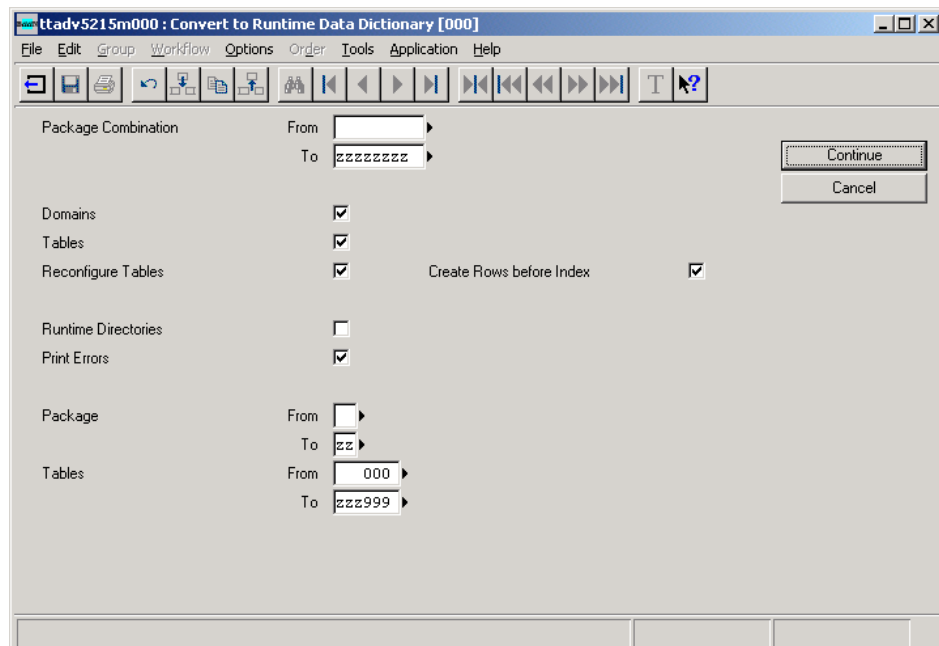
For information on how to mount a CD-ROM to your UNIX system, refer to the documentation from your hardware vendor.

- 2 Scan the PMC dumps through the Scan Solution File (ttpmc2200m000) session. In this session you must select the **Overwrite** check box. The PMC dumps that you must scan depend on the extensions that you use in your package combinations.

You must always scan the PMC dump for the standard software (spb40c4_17stnd). In addition, you must scan one or more of the following PMC dumps:

- For the Dutch localization: spb40c4_17nl10.
- For the Japanese localization: spb40c4_17jap0.
- For the French localization: spb40c4_17fre0.
- For the Italian localization: spb40c4_17itl0.
- For the Supply Chain-Italian localization:
 - spb40c4_17sch0
 - spb40c4_17sch1
 - spb40c4_17its0.
- For the Nordic localization: spb40c4_17nc20.
- For the Controlling extension: spb40c4_17cnt0.
- For the Supply Chain extension: spb40c4_17sch0 and spb40c4_17sch1.
- For the Supply Chain/Controlling extension:
 - spb40c4_17cnt0
 - spb40c4_17sch0
 - spb40c4_17sch1
 - spb40c4_17scc1
- For the Multicurrency extension: spb40c4_17mcr0.
- For the Aerospace and Defense and0 extension: spb40c4_17and0.
- For the Aerospace and Defense and1 extension: spb40c4_17and1.

- For the North American Automotive Solution extension:
 - spb40c4_17sch0
 - spb40c4_17sch1
 - spb40c4_17nas0
 - For the Baan Connect Kit extension: spb40c4_17bci0.
 - For the iCRM integration extension: spb40c4_17crm0.
 - For the Automotive Global Solution extension: spb40c4_17cnt0 and spb40c4_17ags0.
- 3 All users must now exit the environment in which the Service Pack will be installed.
 - 4 Run the Process Solutions (ttpmc2101m000) session to process the PMC dumps that you scanned in step 2. This session consists of two parts: the Check Solution to Install (ttpmc2203s000) session and the Install Solution (ttpmc2205s000) session. In the Install Solution session, you must select the **Pre-Installation Instructions Followed Up** check box, otherwise, the Service Pack will not install.
 - 5 Start the Convert to Runtime Data Dictionary (ttadv5215m000) session for all package combinations. Select all of the check boxes in this session to reconfigure the tables, because some tables were modified for bug fixing.



- 6 Exit and restart the bshell.

- 7 If you use the ASCII help viewer, run the Create Runtime Help (ttadv5230m000) session for the languages and update VRCs that you are using. Select the check boxes as shown in the following figure:

ttadv5230m000 : Create Runtime Help [000]

File Edit Group Workflow Options Order Tools Application Help

Form 1 Form 2

From To

Package - zz

Version B40U - B40U

Release c4 - c4

Customer - zzzz

Language 1 - 4

Domains ☒ Menus ☒

Tables ☒ Messages ☒

Table Fields ☒ Questions ☒

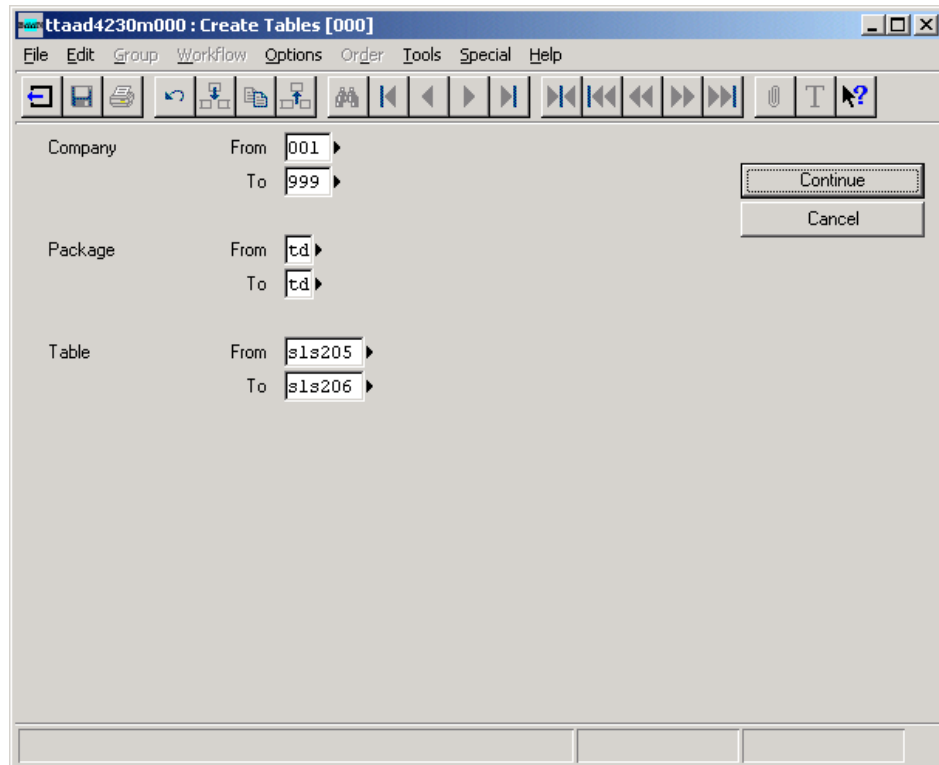
Labels ☒ Sessions ☒

Forms ☒ Business Objects ☒

Form Fields ☒ Reports ☒

Continue Cancel

- 8 Start the Create Tables (ttaad4230m000) session to create the new tables tdsIs205 and tdsIs206. The session then physically creates the new tables that were added to the Service Pack.



- 9 Exit and restart the bshell. The installation of the Service Pack is complete. After you perform the post-installation procedure, the users can start to use the environment.

Post-installation instructions

After you install the Service Pack, take the following steps:

- 1 This step is only relevant if you use the interface between SSA Baan IVc4 and Baan SCS Scheduler (part of the Baan Connect Kit extension) and solution 165901 was not installed prior to installing the Service Pack.

You must run a correction program immediately after you install the Service Pack. You can download this correction program from solution 166013 on the One Point Support (Baan) Web site.

Refer to solutions 165901 and 166013 in the knowledge base of the One Point Support (Baan) Web site for instructions on how to run the correction program.

- 2 If you use Business Processes in the DEM module in combination with Worktop as a user interface, Worktop 2.3.1 or a newer version of Worktop must be installed. Refer to solution 142217 for more information. You can find the latest version of Worktop on the SSA One Point Support (Baan) Web site under solution number 13964.
- 3 This step is only relevant if you implemented the report archiving functionality that was delivered in solution 139193 (part of Service Pack 15) and did not yet request for a valid license.

The report archiving was originally delivered in time-bound demo mode (via solution 139193). Warnings will pop-up 3 months before November 1, 2004. Now, the official licensing for this functionality is available and must be implemented. Refer to solution 143726 on the SSA One Point Support (Baan) Web site how to license this functionality.

- 4 This step is only relevant if you want to use sessions in package tg (DEM) by means of the Webtop user interface.

At the initial delivery of Webtop for SSA Baan IVc4, all sessions in package tg (DEM) were disabled for Webtop. If you want to use the session in package tg by means of the Webtop user interface, you must start the ttconwebtop session after you install the Service Pack. This will make most of the sessions in package tg Webtop-enabled.

- 5 This step is only relevant if you use the Aerospace & Defense (AND0 or AND1) extension and solution 166021 was not installed before you installed the Service Pack.

A new parameter, **Explode BOM when processing permanent transfers**, has been added to the PGC Parameters (tipgc000) table for solution 166021. This parameter must be maintained in the Maintain PGC Parameters (tipgc0100m00b) session after you install the Service Pack. Refer to solution 166021 for more information.

Source codes of PMC Service Packs

Solutions and Service Packs created by SSA Global and installed through the PMC tool have the source code of modified components included. However, the source codes of program scripts, libraries, and functions are only installed if a previous version of the source code of the component exists in the environment in which the solution or Service Pack is installed.

For example, if a fix is produced for solution 71291 in the program script `tdilc4202`, the PMC dump for this solution contains the program script source and the program object.

This solution is installed at system X in the update VRC `B40U_c4_stnd`. Before you install the program script source, the PMC tool checks whether the program script source exists in the update VRC, or in a VRC that is in the derived-from structure for the update VRC.

If the program script source of `tdilc4202` already exists, the new program script source and the program object are installed from the PMC dump of the solution. If the program script source is not found, only the program object is installed.

Before you begin the installation of a solution or Service Pack through PMC, SSA Global alliances or customers who need the source codes must make sure that the sources exist in the environment in which the solutions or Service Packs are installed.

Chapter 3

Functional enhancements and important solutions

3

This chapter describes the most important functional enhancements and important solutions for Service Pack 17. The following enhancements and important solutions were introduced:

- Fin. GLD: Audit capability in Import Journal Vouchers
- Manuf. PCF: BOM data for E-Configuration Enterprise Modeler
- Invoices (all): Implementation of Canadian HST tax
- DEM: DEM in combination with Webtop
- Automotive: New SSC Parameter for "Shipment Warehouse Only"
- Aerospace & Defense (AND0/AND1): Permanent transfer of labor
- SSA Baan IVc4: Other

Fin. GLD: Audit capability in Import Journal Vouchers by Batch ID Number (tfgld2215m000)

Short description of the enhancement

An audit capability has now been implemented in the Import Journal Vouchers by Batch ID Number (tfgld2215m000) session. The audit enables users to validate an import batch before the journal voucher transactions are actually loaded into the General Ledger. The audit will produce a detailed error report and allow users to make corrections to import data.

New or changed software components

For a detailed overview of new or changed software components, refer to solution 142566 in the document componentlist_stnd.

Customer implication

You can start to use this enhancement immediately.

Manuf. PCF: BOM data for E-Configuration Enterprise Modeler

Short description of the enhancement

A new session, the Show Generic BOM Structure (tipcf3310m000) session, is created to support the integration to E-Configuration Enterprise by providing the Generic BOM structure as an .XML file.

Better support for the integration to E-Configuration Enterprise by providing models is required.

New or changed software components

For a detailed overview of new or changed software components, refer to solution 143876 in the document componentlist_stnd.

Customer implication

You can start to use this enhancement immediately if you have the E-Configuration Enterprise Modeler implemented. For more information on how to use the session, refer to the session Help.

Invoices (all): Implementation of Canadian HST tax

Short description of the enhancement

In Canada, a provincial tax called HST (Harmonized Sales Tax) applies. Rather than having the Canadian tax split into two separate lines (PST and GST) as invoicing currently works, HST is a straight 15% tax that must be combined into a single line on the invoice. This tax is used in the following provinces:

- Nova Scotia (NS)
- New Brunswick (NB)
- Newfoundland & Labrador (NL)

Any tax calculated by Vertex/Taxware, where tax is based on an address in the province of Nova Scotia (NS), New Brunswick (NB), or Newfoundland & Labrador (NL), will now show only a single tax line on the invoice with tax authority showing as HST.

New or changed software components

For a detailed overview of new or changed software components, refer to solution 165615 in the document componentlist_std.

Customer implication

This functionality has been modified and needs careful attention for the users in Canada.

DEM: DEM in combination with Webtop

Short description of the enhancement

Webtop on SSA Baan IV did not support DEM, while newer versions such as SSA Baan ERP 5.0c support DEM on Webtop.

DEM has been enhanced and can now be used on the Webtop. As a result, the Webtop can now also be used as a user interface to work with SSA Baan IV by means of the DEM processes and navigation.

New or changed software components

For a detailed overview of new or changed software components, refer to solution 144611 in the document componentlist_stnd.

Customer implication

Before you can use this enhancement, you must install Webtop 3.0 buildGY0114 or a newer build of Webtop 3.0, which you can download from solution 142977.

Automotive: New SSC parameter for Shipment Warehouse Only

Short description of the enhancement

Two functionalities are available when you deal with planned/in-prep shipments in the Automatically Create Planned Deliveries (tdssc0217m000) session. One option is to enable the system to search for shippable stock in all netable warehouses. The other option is to search only the shipment warehouse. The current functionality is to enable the system to search in all netable warehouses, which is unwanted if you have a large distance between the warehouses.

A new parameter, the **Shipment Warehouse Only** check box, has been added to the SSC Parameters (tdssc000). By default, this check box is cleared so the functionality will not be changed from the current way the system runs.

The parameter settings have the following affects:

- **Selected:** If you select this check box, the system only looks for shippable inventory in the warehouse on the planned delivery, which is defaulted from the contract. If no inventory is present in this warehouse, the shippable quantity will be **0**, even if inventory exists elsewhere.
- **Cleared (default):** If you clear this check box, the system searches all netable warehouses for the shippable quantity. The system creates a reservation for the quantity and state that it is shippable. If this stock is not currently in the shipment warehouse, you must transfer this stock to the shipment warehouse before the planned delivery can be confirmed.

Note

This enhancement is only relevant for users of the SCH1 or NAS0 extension. The AGS0 extension already had this functionality with the parameter.

New or changed software components

For a detailed overview of new or changed software components, refer to solution 165586 in the document componentlist_nas0, componentlist_sch0 or componentlist_sch1.

Customer implication

You can start to use this enhancement immediately.

Aerospace & Defense (AND0/AND1): Permanent transfer of labor

Short description of the enhancement

If reporting labor hours on a lower level assembly and reporting labor hours on the parent level assembly, **Permanent Transfers** labor cost amounts are taken from both the parent and the sub-assembly on the From project. This understates the labor cost amounts on the From project because the labor hours of the sub-assembly are already included in the parent item's labor cost amount. Similarly, the To project has an overstated labor cost amount because the labor hours of the sub-assembly are already included in the parent item's labor amount.

A PGC parameter has now been added to determine if the BOM will be exploded while processing permanent transfers. If this check box is cleared, the costs will be transferred at the parent level only for the item being transferred. The costs will be determined by the item's MAUC. However, if the check box is selected, the costs will be transferred at the level of the BOM where the costs were incurred. The MAUC will still be used at each level to determine the costs to transfer between projects/pegs.

New or changed software components

For a detailed overview of new or changed software components, refer to solution 166021 in the document componentlist_and0 or componentlist_and1.

Customer implication

You can start to use this enhancement after you maintain the new parameter in the Maintain PGC Parameters (tipgc0100m00b) session.

SSA Baan IVc4: Other

The following table provides an overview of other minor functional modifications and optimizations in the Service Pack. For more details, refer to the detailed solution descriptions of the relevant solutions in the Release Notes documents in the Documentation folder of the CD-ROM.

Area / Extension	Solution	Description
Service	140346	Implementation of functionality for Shifted VAT in SMA
Finance ACP	144152	Option to suppress questions related to update purchase data in the Approve Purchase Invoices (tfacp1140s000) session
Finance ACP	144511	Option to reverse an approval in a period later than the approval period in the Approve Purchase Invoices (tfacp1140s000) session
Finance CMG	144269	Improved selection of invoices in multi-site scenario in the Assign Unallocated/Advance Receipts to Invoices (tfcmg2105s000) session
Finance FST	142400	Performance Improvement in the Select Values Financial Statements (tffst1205m000) session
Projects	142760	Option to confirm multiple Purchase Budget Lines in the Maintain Purchase Budget Detail Lines (tpptc4120m000) session
Projects	142858	Costs related to posting type Inventory will be printed in the Print Commitments and Actual Costs (tpppc2412m000) session
Manuf. SFC	144183	Features and options for phantom item will be printed on covering note in the Print Order Documents (tisfc0408m000) session
Manuf. MPS	144202	Different handling of actual stock in the past in the Maintain Master Production Schedule Session (timps3101m000) session

Manuf. CPR	163790	Reduced record locks on Item Master table (tiitm001) in the Update Cost Prices (ticpr2220m000) session
Manuf. PCS	143504	Option to delete EDM Data in the Delete Archived Projects (tipcs2290m000) session
Distr. SLS/PUR	165966	Option to delete sales/purchase history by Type of Order Lines
Distr. ILC	144746	Option to print unadvised lines in the Generate Inbound Advice (tdilc4203m000) session
Ags0 / nas0 / sch1	143486	You can reprint delivery documents by MBOL even after you confirm in the Print Delivery Documents by Advice Note Number/MBOL (tdssc3417m000) session
And0 / and1	143795	New session for determining the inventory valuation by accountability transactions by item or item group
And1	143412	Option for inventory reconciliation between inventory transactions and inventory transactions by peg
And1	144063	Implementation of Project Requirement Planning time fence functionality in the Generate Purchase orders (tppss6200m000) session