



▶▶ SSA® Baan Dimensions 6.0

Installation and Deployment Guide for Service Pack 16

Copyright © 2004 by Baan International B.V., a subsidiary of SSA Global Technologies, Inc.

All rights reserved. No part of this publication may be reproduced, stored in a retrieval system, or transmitted in any way or by any means, including, without limitation, photocopying or recording, without the prior written consent of Baan™ International B.V.

Important Notices

The material contained in this publication (including any supplementary information) constitutes and contains confidential and proprietary information of Baan International B.V.

By gaining access to the attached, you acknowledge and agree that the material (including any modification, translation or adaptation of the material) and all copyright, trade secrets and all other right, title and interest therein, are the sole property of Baan International and that you shall not gain right, title or interest in the material (including any modification, translation or adaptation of the material) by virtue of your review thereof other than the non-exclusive right to use the material solely in connection with and the furtherance of your license and use of software made available to your company from Baan International pursuant to a separate agreement ("Purpose").

In addition, by accessing the enclosed material, you acknowledge and agree that you are required to maintain such material in strict confidence and that your use of such material is limited to the Purpose described above.

Although Baan International has taken due care to ensure that the material included in this publication is accurate and complete, Baan International cannot warrant that the information contained in this publication is complete, does not contain typographical or other errors, or will meet your specific requirements. As such, Baan International does not assume and hereby disclaims all liability, consequential or otherwise, for any loss or damage to any person or entity which is caused by or relates to errors or omissions in this publication (including any supplementary information), whether such errors or omissions result from negligence, accident or any other cause.

Baan International B.V., is a wholly owned subsidiary of SSA® Global Technologies™, Inc.

Trademark Acknowledgements

SSA Global, SSA and the SSA Global logo are trademarks of SSA Global Technologies, Inc. in the United States and/or other countries. Baan is a trademark of Baan International B.V., in the United States and/or other countries.

All other company, product, trade or service names referenced may be registered trademarks or trademarks of their respective owners.

Publication Information

Document code	: U8489A US
Release	: SSA® Baan Dimensions 6.0
Document title	: Installation and Deployment Guide for Service Pack 16
Publication date	: September 04

Table of Contents

Chapter 1	Introduction	1-1
	Contents	1-2
Chapter 2	To install the Service Pack	2-1
	Preinstallation requirements	2-1
	To install the Service Pack	2-2
	Source codes of PMC Service Packs	2-4
	Derived-from VRC structure for SSA Baan Dimensions 6.0 SP16 localizations	2-5
Chapter 3	Functional enhancements and important solutions	3-1
	General	3-1
	Inventory Control	3-1
	Purchase Control/Sales Control/Replenishment Order Control.....	3-2
	Shop Floor Control	3-2

About this Guide

This document is an Installation and Deployment Guide that describes the contents of Service Pack 16 and how to install Service Pack 16 on SSA Baan Dimensions 6.0. This document is intended for SSA Baan IVc4 installers and system administrators.

This document contains the following chapters:

Chapter 1, "Introduction," briefly describes Service Pack 16 for SSA Baan Dimensions 6.0.

Chapter 2, "To install the Service Pack," describes how to install Service Pack 16.

Chapter 3, "Functional enhancements and important solutions," describes the most important functional enhancements and important solutions of Service Pack 16 for SSA Baan Dimensions 6.0.

Send us your comments

We continually review and improve our documentation. Any remarks/requests for information concerning this document or topic are appreciated. Please e-mail your comments to kd@baan.com.

In your e-mail, refer to the document number and title. More specific information will enable us to process feedback efficiently.

Service Pack 16 is intended for users of SSA Baan Dimensions 6.0 and can only be used to upgrade existing SSA Baan Dimensions 6.0 installations.

Service Pack 16 contains:

- All SSA Baan IV bug fixes from December 15, 2003, through March 14, 2004, that needed to be built into the SSA Baan Dimensions software.
- All SSA Baan Dimensions bug fixes from December 19, 2003, through March 19, 2004.

You can install the Service Pack by means of the PMC tool on the following hardware platforms:

- UNIX
- Microsoft Windows

You can use the tool to install individual solutions, which you can download from the SSA One Point Support (Baan) Web site, or to install Service Packs.

The following table lists the extensions and languages for which the Service Pack is available:

Extension	Code	Dutch (1)	English (2)	German (3)	French (4)	Swedish (9)
SSA Baan Dimensions 6.0 SP16	B40C_c4_m600	X	X	X	X	
Overlap SSA Baan Dimensions 6.0 SP16 and Controlling (cnt0)	B40C_c4_mc06		X	X		
Overlap SSA Baan Dimensions 6.0 SP16 and the French localization (fre0)	B40C_c4_mf06		X		X	
Overlap SSA Baan Dimensions 6.0 SP16 and the Nordic localization (nc20)	B40C_c4_mn06		X			X

Translations for any other languages are only delivered upon request.

Contents

The Service Pack CD-ROM contains the following files:

- spb40c4_16m600:
This PMC dump contains fixes for the SSA Baan Dimensions 6.0 extension software and the new functionality for the extension software.
- spb40c4_16mc06:
This PMC dump contains fixes for the overlap with the Controlling extension.
- spb40c4_16mf06:
This PMC dump contains fixes for the overlap with the French localization.
- spb40c4_16mn06:
This PMC dump contains fixes for the overlap with the Nordic localization.
- *Installation and Deployment Guide for SSA Baan Dimensions 6.0 SP16 (U8489A US)*
- Overview of solution numbers (solutions_m600.txt)
- Overview of customization parts (customization_parts_m600.txt)

Chapter 2

To install the Service Pack

2

Preinstallation requirements

Before you can install Service Pack 16, the following preinstallation requirements are applicable:

- spb40c4_16m600:
 - All Service Packs through spb40c4_16stnd
 - All Service Packs through spb40c4_15m600
- spb40c4_16mc06:
 - All Service Packs through spb40c4_16stnd
 - All Service Packs through spb40c4_16cnt0
 - All Service Packs through spb40c4_16m600
 - All Service Packs through spb40c4_15mc06
- spb40c4_16mf06:
 - All Service Packs through spb40c4_16stnd
 - All Service Packs through spb40c4_16fre0
 - All Service Packs through spb40c4_16m600
 - All Service Packs through spb40c4_15mf06

- spb40c4_16mn06:
 - All Service Packs through spb40c4_16stnd
 - All Service Packs through spb40c4_16nc20
 - All Service Packs through spb40c4_16m600
 - All Service Packs through spb40c4_15mn06

Ensure that sufficient free disk space is available. You must have at least 500 megabytes (MB) available to install the Service Pack. Note that the required space for the dimensions data depends on the database management system that you run.

Note

An actual backup of the \$BSE environment is available, as well as a backup of the actual data. If you do not have an actual backup, you must create a backup before you start the installation procedure.

To install the Service Pack

To install Service Pack 16 for SSA Baan Dimensions 6.0, take the following steps:

- 1 Copy and scan Service Pack 16.
- 2 Install Service Pack 16.

The following sections describe these steps in greater detail.

Copy and scan Service Pack 16

To copy and scan the Service Pack, take the following steps:

- 1 Copy the following files that correspond to the type of system on which you work:

UNIX users:

Copy the files from the CD-ROM to a temporary directory on your local system. Use FTP to transfer the data from the temporary local directory to the Baan root directory, for example, \${BSE}/tmp/dumps.

Windows NT users:

Copy the files from the CD-ROM to the tmp folder in the Baan root directory (\$BSE), for example: e:\baan\tmp\dumps.

- 2 Be sure to install the Service Pack 16 components in the same update VRCs that you use for Service Pack 15. If SSA Global Alliances or customers want to upgrade customizations to the level of Service Pack 16, they can install Service Pack 16 in a separate update VRC. To do so, SSA Global Alliances or Customers must create manually new Update VRCs in PMC, and install solution 73854 from the SSA One Point Support (Baan) Web site. Make sure to read the instructions of the solution. Note that you can no longer uninstall solutions. It is recommended that you not use solution 73854, if possible, and install the solutions in the same update VRC as Service Pack 15.
- 3 Scan the PMC dumps with the Scan Solution File (ttpmc2200m000) session. The PMC dumps that you must scan depend on the extensions that you use in your package combinations. You must always scan the PMC dump for the SSA Baan Dimensions 6.0 SP16 extension software (spb40c4_16m600). In addition, you must scan one or more of the following PMC dumps:
 - For the overlap with Controlling: spb40c4_16mc06
 - For the overlap with the French localization: spb40c4_16mf06
 - For the overlap with the Nordic localization: spb40c4_16mn06

For more information, refer to “Derived-from VRC structure for SSA Baan Dimensions 6.0 SP16 localizations,” later in this chapter.

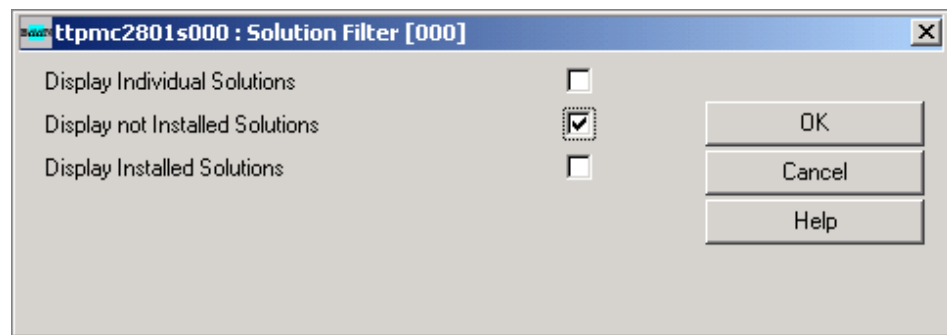
Install Service Pack 16

To install the Service Pack 16, take the following steps:

- 1 In the Process Solutions (ttpmc2101m000) session, process the PMC dumps that you copied and scanned in the previous process.

Note

If you process the solution in the Process Solutions (ttpmc2101m000) session, click **Filter** and change the settings, as shown in the following figure. As a result, only the spb40c4_16m600 solutions appear.



- 2 Run the Create Runtime Data Dictionary (ttadv5210m000) session for the 40Ccm600 package combination and all derived package combinations.
- 3 Run the Create Runtime Data Dictionary (Forms and Menus) (ttadv5214m000) session for all the B40C_c4_m600 packages.
- 4 Run the Create Tables (ttaad4230m000) session to create tables for all companies on B40C_c4_m600.

Source codes of PMC Service Packs

Solutions and Service Packs created by SSA Global and installed through the PMC tool include the source code of modified components. However, the source codes of program scripts, libraries, and functions are only installed if a previous version of the source code of the component exists in the environment in which the solution or Service Pack is installed.

For example, if a fix is created for solution 71291 in the program script tdilc4202, the PMC dump for this solution contains the program script source and the program object. This solution is installed at system X in the update VRC B40U_c4_stnd.

Before you install the program script source, the PMC tool checks whether the program script source exists in the update VRC, or in a VRC that is in the derived-from structure for the update VRC.

If the program script source of tdilc4202 already exists, the new program script source and the program object are installed from the solution's PMC dump. If the program script source is not found, only the program object is installed.

Before you begin the installation of a solution or Service Pack through PMC, SSA Global alliances or customers who need the source codes must make sure that the sources exist in the environment in which the solutions or Service Packs are installed.

Derived-from VRC structure for SSA Baan Dimensions 6.0 SP16 localizations

Overlap with Controlling (cnt0) extension



B40_c4



B40U_c4_stnd

VRC for patches and solutions on SSA Baan IVc4. Make sure that you installed Service Pack 16 in this VRC.



B40L_c4_cnt0



B40U_c4_cnt0

VRC for patches and solutions on the Controlling (cnt0) extension. Make sure that you installed Service Pack 16 in this extension VRC.



B40C_c4_m600

VRC that contains the initial SSA Baan Dimensions 6.0 extension software, patches and solutions. Make sure that you install Service Pack 16 (spb40c4_16m600) in this extension VRC.

B40C_c4_mc06

VRC with overlap between SSA Baan Dimensions 6.0 and the Controlling (cnt0) extension. In this overlap VRC you must install the Service Pack 16 overlap (spb40c4_16mc06).

Overlap with French (fre0) localization



B40_c4



B40U_c4_std

VRC for patches and solutions on Baan IVc4. Make sure that you installed Service Pack 16 in this VRC.



B40L_c4_fre0



B40U_c4_fre0

VRC for patches and solutions on the French (fre0) localization. Make sure that you installed Service Pack 16 in this localization VRC.



B40C_c4_m600

VRC that contains the initial SSA Baan Dimensions 6.0 extension software, patches and solutions. Make sure that you install Service Pack 16 (spb40c4_16m600) in this extension VRC.

B40C_c4_mf06

VRC with overlap between SSA Baan Dimensions 6.0 and the French (fre0) localization. In this overlap VRC you must install the Service Pack 16 overlap (spb40c4_16mf06).

Overlap with Nordic (nc20) localization



B40_c4



B40U_c4_stnd

VRC for patches and solutions on SSA Baan IVc4. Make sure that you installed Service Pack 16 in this VRC.



B40L_c4_nc20



B40U_c4_nc20

VRC for patches and solutions on the Nordic (nc20) localization. Make sure that you installed Service Pack 16 in this localization VRC.



B40C_c4_m600

VRC that contains the initial SSA Baan Dimensions 6.0 extension software and patches, and solutions. Make sure that you install Service Pack 16 (spb40c4_16m600) in this extension VRC.

B40C_c4_mn06

VRC with overlap between SSA Baan Dimensions 6.0 and the Nordic (nc20) localization. In this overlap VRC, you must install the Service Pack 16 overlap (spb40c4_16mn06).

Chapter 3

Functional enhancements and important solutions

3

This chapter describes the most important functional enhancements and important solutions for Service Pack 16. Some solutions can have an effect on the current way of working. The following points are noteworthy:

General

The Dimension-specific changes with respect to the option to enlarge order numbers are included in Service Pack 16. For more information about this option, refer to solution 138962.

The Dimension-specific changes with respect to SSA Webtop will be included in Service Pack 17.

Inventory Control

Solution 141321

If an ID number has both inventory on-hand and inventory on-order in a particular warehouse, you can now make an inventory correction for this ID number/warehouse combination in the Maintain Inventory Corrections by IDno (tdlra0114m000) session.

Solution 141428

When you process cycle counting orders for dimension items, you can now use the counting date for the inventory transactions.

Purchase Control/Sales Control/Replenishment Order Control

Solution 142751

If you change the delivery date of a replenishment order, a sales quotation, or a sales order for which preallocations are present, the user must choose what must be done with the preallocations. The **No Action** option is now available. If you select this option, the preallocations will not be changed.

Solution 164461

If you archive purchase orders and sales orders, the dimension order data is also archived.

Shop Floor Control

Solution 140815

If you replan production orders with the Replan Production (tisfc1203m000) session, SFC details are no longer recalculated for dimension items.

Solution 141078

The “Choose an update action for estimated materials?” question now always appears if you make changes in the Dimensions screen of a production order.

Solution 141782

The “Change quantity ordered from X to Y?” question now always appears if the quantity of a released production order is changed in the Dimensions screen.