



▶▶ **SSA® Baan IVc4**

Installation and Deployment Guide for Service Pack 16

Copyright © 2004 by Baan International B.V., a subsidiary of SSA Global Technologies, Inc.

All rights reserved. No part of this publication may be reproduced, stored in a retrieval system, or transmitted in any way or by any means, including, without limitation, photocopying or recording, without the prior written consent of Baan™ International B.V.

Important Notices

The material contained in this publication (including any supplementary information) constitutes and contains confidential and proprietary information of Baan International B.V.

By gaining access to the attached, you acknowledge and agree that the material (including any modification, translation or adaptation of the material) and all copyright, trade secrets and all other right, title and interest therein, are the sole property of Baan International and that you shall not gain right, title or interest in the material (including any modification, translation or adaptation of the material) by virtue of your review thereof other than the non-exclusive right to use the material solely in connection with and the furtherance of your license and use of software made available to your company from Baan International pursuant to a separate agreement ("Purpose").

In addition, by accessing the enclosed material, you acknowledge and agree that you are required to maintain such material in strict confidence and that your use of such material is limited to the Purpose described above.

Although Baan International has taken due care to ensure that the material included in this publication is accurate and complete, Baan International cannot warrant that the information contained in this publication is complete, does not contain typographical or other errors, or will meet your specific requirements. As such, Baan International does not assume and hereby disclaims all liability, consequential or otherwise, for any loss or damage to any person or entity which is caused by or relates to errors or omissions in this publication (including any supplementary information), whether such errors or omissions result from negligence, accident or any other cause.

Baan International B.V., is a wholly owned subsidiary of SSA® Global Technologies™, Inc.

Trademark Acknowledgments

SSA Global, SSA and the SSA Global logo are trademarks of SSA Global Technologies, Inc. in the United States and/or other countries. Baan is a trademark of Baan International B.V., in the United States and/or other countries.

All other company, product, trade or service names referenced may be registered trademarks or trademarks of their respective owners.

Publication Information

Document code	: U8456A US
Release	: SSA® Baan IVc4
Document title	: Installation and Deployment Guide for Service Pack 16
Publication date	: July 04

Table of Contents

Chapter 1	Introduction	1-1
	Contents	1-3
Chapter 2	To install the Service Pack	2-1
	Preinstallation requirements	2-1
	To install the Service Pack	2-3
	To install the Tools.....	2-4
	To install the Applications.....	2-6
	Post-installation instructions	2-10
	Source codes of PMC Service Packs	2-11
Chapter 3	Functional enhancements and important solutions	3-1
	Archiving (Sales/Purchase): Option to archive sales and purchase orders	3-2
	Fin. ACP/ACR: Reports can print from archive company	3-3
	Distr. Location Control: Rebuild Inventory Data (ILC).....	3-3
	Distr. Purchase/Sales: Process Delivered Orders	3-4
	Distr. Sales: Date for posting Commissions/Rebates	3-4
	Aerospace & Defense AND1: Split Production Orders and Subcontracting.....	3-5
	Automotive: New SSC Parameter for "Step Size for Supply Chain"	3-6
	Tools PMC: Installation improvements.....	3-7
	Baan IVc4: Other	3-9

About this Guide

This Installation and Deployment Guide describes the contents of Service Pack 16 and how to install Service Pack 16 on Baan IVc4. This document is intended for Baan IVc4 installers and system administrators.

This guide includes the following chapters:

- Chapter 1, "Introduction," briefly describes Service Pack 16 for Baan IVc4.
- Chapter 2, "To install the Service Pack," describes how to install Service Pack 16.
- Chapter 3, "Functional enhancements and important solutions," describes the most important functional enhancements and important solutions of Service Pack 16.

Send us your comments

We continually review and improve our documentation. Any remarks/requests for information concerning this document or topic are appreciated. Please e-mail your comments to kd@baan.com.

In your e-mail, refer to the document number and title. More specific information will enable us to process feedback efficiently.

Chapter 1

Introduction

1

Service Pack 16 for Baan IVc4 is intended for users of Baan IVc4.

You can use this Service Pack to upgrade existing installations.

Service Pack 16 contains all bug fixes up to March 14, 2004. In addition, Service Pack 16 contains a number of functional enhancements.

The Service Pack can be installed by means of the PMC tool on the following hardware platforms:

- UNIX
- Microsoft Windows

You can use the tool to install individual solutions, which you can download from the SSA One Point Support (Baan) Web site, or to install Service Packs.

The following table shows for which extensions and languages the Service Pack is available:

Extension	Code	Languages			
		Dutch = 1	English = 2	German = 3	French = 4
Standard Baan IVc4		X	X	X	X
Aerospace and Defense and0	And0		X		
Aerospace and Defense and1	And1		X		
Baan Connect Kit 1.1 / 1.2 / 1.3	Bci0	X	X	X	X
Controlling	Cnt0	X	X	X	X
French localization	Fre0		X		X
Italian localization	Itl0		X		
Supply Chain – Italian localization	Its0		X		
Japanese localization	Jap0		X		
North American Automotive Solution	Nas0		X	X	X
Multicurrency	Mcr0		X		
Nordic localization	Nc20		X		
Netherlands localization	NI10	X	X		
Supply Chain – Controlling	Scc1	X	X	X	X
Supply Chain	Sch1	X	X	X	X
iCRM integration	Crm0	X	X	X	X
Automotive Global Solution	Ags0	X	X	X	X

The availability of other languages will be published at a later stage on the SSA One Point Support (Baan) Web site. Availability of these translations is published under solution number 142271.

Contents

The Service Pack CD-ROM contains the following files and folders:

- B40c4_SP16 folder:
This folder contains all the files that are required to update the Baan IVc4 software. The folder contains the following files:
 - stb40c4_16stnd:
This file contains fixes for Tools.
 - spb40c4_16stnd:
This file contains fixes for the standard application software.
 - spb40c4_16and0:
This file contains fixes for the Aerospace and Defense 2.2c extension.
 - spb40c4_16and1:
This file contains fixes for the Aerospace and Defense and1 extension.
 - spb40c4_16ags0:
This file contains fixes for the Automotive Global Solution extension.
 - spb40c4_16bci0:
This file contains fixes for the Baan Connect Kit extension.
 - spb40c4_16cnt0:
This file contains fixes for the Controlling extension.
 - spb40c4_16crm0:
This file contains fixes for the iCRM integration extension.
 - spb40c4_16fre0:
This file contains fixes for the French localization.
 - spb40c4_16itl0:
This file contains fixes for the Italian localization.
 - spb40c4_16its0:
This file contains fixes for the Supply Chain - Italian localization.
 - spb40c4_16jap0:
This file contains fixes for the Japanese localization.
 - spb40c4_16mcr0:
This file contains fixes for the Multicurrency extension.
 - spb40c4_16nas0:
This file contains fixes for the North American Automotive Solution extension.

- spb40c4_16nc20:
This file contains fixes for the Nordic localization.
- spb40c4_16nl10:
This file contains fixes for the Dutch localization.
- spb40c4_16scc1:
This file contains fixes for the Supply Chain-Controlling extension.
- spb40c4_16sch0:
This file contains the first set of fixes for the Supply Chain extension.
- spb40c4_16sch1:
This file contains the second set of fixes for the Supply Chain extension.
- Documentation folder:
The documentation folder of the Service Pack CD-ROM contains the following documentation:
 - Installation and Deployment Guide - Service Pack 16 (U8456A US).
 - Additional document 162639and1. This document describes a functional enhancement in the Aerospace and Defense (AND1) extension for solution 162639. For more information about this document, refer to Chapter 3, “Functional enhancements and important solutions.”
 - Release notes folder with modified component and solved defect overviews, including the following:
 - Relnotes_std.doc containing a textual description of solved defects for the standard application software.
 - Relnotes_tools.doc containing a textual description of solved defects for the tools software.
 - Relnotes_extn.doc containing a textual description of solved defects for the software of the extensions and localizations.
 - Componentlist_xxxx.xls containing an overview of modified components.
 - Solutions_xxxx.txt containing an enumeration of BSS solution numbers included in the Service Pack.

The overviews of modified components and BSS solution numbers are created for each of the products, either standard, localization, or extension, in which xxxx in the file name stands for the related localization or extension.

The release notes document with the textual descriptions of solved defects for the extensions and localizations is now organized differently compared to Service Pack 14 or older Service Packs. The descriptions of all solutions of all extensions and localizations are now in one document. For each solution the document mentions the solution number and the extensions / localizations where this solution relates to.

- **VERSION.txt:**
A text file that contains the identification of the CD-ROM.

Chapter 2

To install the Service Pack

2

Preinstallation requirements

Before you can install Service Pack 16, you must have Service Pack 15 and earlier Service Packs for Baan IVc4 installed.

Before you install the Service Pack, you must first run the Convert to Runtime Data Dictionary (ttadv5215m000) session for the full range of package combinations, packages, and tables. Select all of the check boxes in this session.

The following table contains an indication of details such as the minimum disk space required and provides an indication of the time required to carry out a successful installation:

Product	Number of solutions	Uninstall (MB)	Install (MB)	Total (MB)	Installation Time (hh:mm)
Standard	352	44.1	63.9	108.0	0:58
Tools	70	1.7	4.5	6.2	0:03
And0	210	24.8	40.9	65.7	0:22
And1	235	29.6	46.7	76.3	0:28
Ags0	212	35.8	57.2	93.0	0:29
Bci0	70	8.7	14.6	23.3	0:07
Cnt0	85	12.7	22.0	34.7	0:09
Crm0	57	6.3	12.3	18.6	0:03
Fre0	14	1.6	2.4	4.0	0:02
Itl0	149	22.2	32.7	54.9	0:15
Its0	150	25.7	40.6	66.3	0:17
Jap0	98	10.1	20.9	31.0	0:08
Mcr0	258	32.0	49.1	81.1	0:34
Nas0	90	15.2	28.9	44.1	0:12
Nc20	61	5.7	14.3	20.0	0:04
Nl10	1	0.1	0.1	0.2	0:00
Scc1	93	18.0	31.9	49.9	0:11
Sch0	256	33.0	56.4	89.4	0:30
Sch1	215	28.2	47.7	75.9	0:21
Total	2,676	355.4	587.1	942.5	5:13

Note

The figures in this table are merely indicative. No rights can be derived from the table. The installation time strongly depends on factors such as the following:

- The operating system and database you use
- The number of solutions that are part of the current Service Pack that are already installed as individual solutions

- The size of the tables to be reconfigured
- Whether you save components during the installation process

The figures used in the previous table are based on an installation performed using the following configuration:

- Operating System: HP-UX 10.20
- CPU: 4
- Memory: 1,023 MB RAM
- Database: BISAM
- Other: flag 'Save Components' in PMC active.

The **Installation Time** column represents the time to install the specified PMC patches. Scanning the patches, check to install for the patches and the convert to runtime data dictionary are not included in these figures.

The required disk space for the runtime software components in the Update VRC directories has not been measured. These are the directories that are defined in the Maintain Directories of Software Components (ttadv1115m000) session. The expectation is that the standard software requires 30 MB and each extension or localization will require max. 4 MB on average. The required disk space will increase if B-languages are installed.

To install the Service Pack

Before you install the Service Pack 16, first check if any last minute information is available about Service Pack 16 and the installation of this Service Pack. You can find this information on the SSA One Point Support (Baan) Web site under solution number 142270.

For the standard Baan IVc4 software, two dumps are created: one for Tools and one for the application. The Tools solutions are in a PMC dump called stb40c4_16stnd, whereas the application solutions are in a dump called spb40c4_16stnd. The reason for this is because the PMC dump for Tools must be scanned in the Base VRC for the standard software, but the components are actually installed in the unique tools VRC B40 c4. For Tools, you cannot have an Update VRC. Therefore, the Tools components are always imported in the unique Tools VRC B40 c4, which is the live VRC. You cannot have a test VRC for Tools.

During the installation of the Service Pack, you can decide on the sequence of installing Tools and applications. You can first install the Tools dump and later on the application dumps, or first install the application dumps and later on the Tools dump. No dependency exists between these dumps. For best results, SSA Global recommends that you install the Tools dump first, and then install the Application dumps, however, the other way around is also possible.

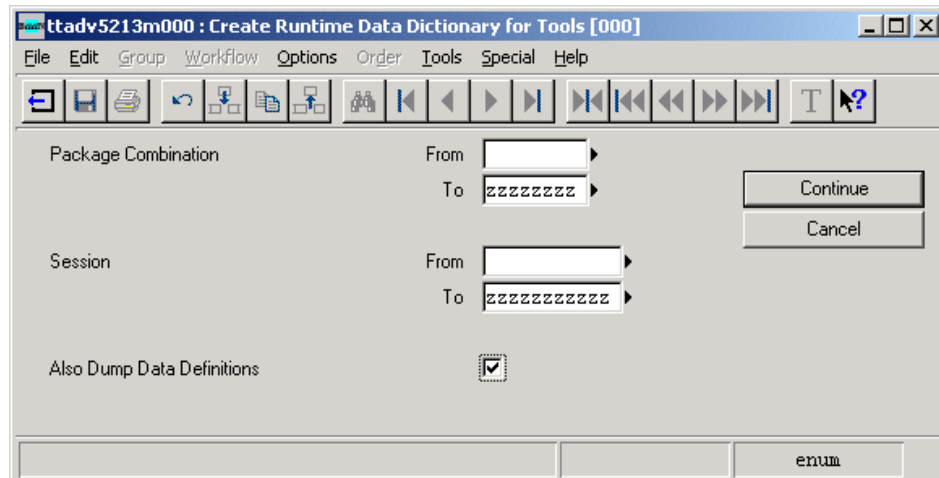
For best results, install Tools and applications at the same time, however, if required, you can choose to install applications and Tools at separate times.

To install the Tools

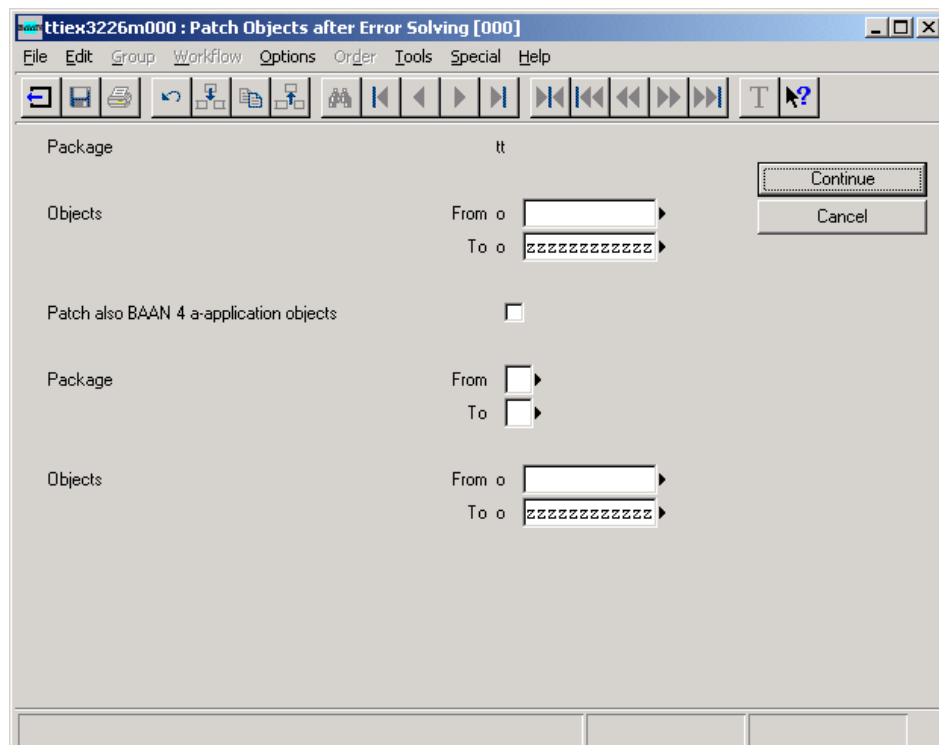
To install the Tools part of Service Pack 16 for Baan IVc4, take the following steps:

- 1 UNIX users must first copy the file stb40c4_16stnd from the B40c4_SP16 folder of the CD-ROM to a temporary directory on the UNIX system. If you copy the files, you must use a transfer protocol in binary mode. If you have the facility to mount a CD-ROM to your UNIX platform, transfer of files from the CD-ROM to the UNIX system is unnecessary. In this situation, you can install directly from the CD-ROM. For information on how to mount a CD-ROM to your UNIX system, refer to the documentation from your hardware vendor.
- 2 Scan the PMC dump stb40c4_16stnd through the Scan Solution File (ttpmc2200m000) session. In this session you must select the **Overwrite** check box.
- 3 All users must now exit the environment in which the Service Pack will be installed.
- 4 Run the Process Solutions (ttpmc2101m000) session to process the PMC dump stb40c4_16. This session consists of two parts: the Check Solution to Install (ttpmc2203s000) session and the Install Solution (ttpmc2205s000) session. In the Install Solution session, you must select the **Pre-Installation Instructions Followed Up** check box, otherwise, the Service Pack will not install.

- 5 Start the Create Runtime Data Dictionary for Tools (ttadv5213m000) session for all package combinations. Select the **Also Dump Data Definitions** check box, as shown in the following figure:



- 6 Exit the bshell. If Baan Tools components are loaded in shared memory, stop and restart the shared memory. Restart the bshell.
- 7 Start the Patch Objects after Error Solving (ttiex3226m000) session for all Baan Tools objects, as shown in the following figure:



- 8 If you use the ASCII help viewer, run the Create Runtime Help (ttadv5230m000) session for the tools VRC B40 c4 and the languages that you are using. Select the check boxes as shown in the following figure:

	From	To
Package	tt	tt
Version	B40	B40
Release	c4	c4
Customer		
Language	1	4

Domains	<input checked="" type="checkbox"/>	Menus	<input checked="" type="checkbox"/>
Tables	<input checked="" type="checkbox"/>	Messages	<input checked="" type="checkbox"/>
Table Fields	<input checked="" type="checkbox"/>	Questions	<input checked="" type="checkbox"/>
Labels	<input checked="" type="checkbox"/>	Sessions	<input checked="" type="checkbox"/>
Forms	<input checked="" type="checkbox"/>	Business Objects	<input checked="" type="checkbox"/>
Form Fields	<input checked="" type="checkbox"/>	Reports	<input checked="" type="checkbox"/>

- 9 Exit and restart the bshell.
The installation of the tools part of the Service Pack is ready. All users can now start to use the environment, unless the installation of the application part of the Service Pack is continued immediately.

To install the Applications

To install the applications part of Service Pack 16 for Baan IVc4, take the following steps:

- 1 UNIX users must first copy files from the B40c4_SP16 folder of the CD-ROM to a temporary directory on the UNIX system. If you copy the files, you must use a transfer protocol in binary mode. The size of the dumps in this folder is approximately 588 MB. You do not need to transfer all files. In step 2, you can see which files are necessary for your software version.
If you have the facility to mount a CD-ROM to your UNIX platform, transfer of files from the CD-ROM to the UNIX system is unnecessary. In this situation, you can install directly from the CD-ROM.

For information on how to mount a CD-ROM to your UNIX system, refer to the documentation from your hardware vendor.

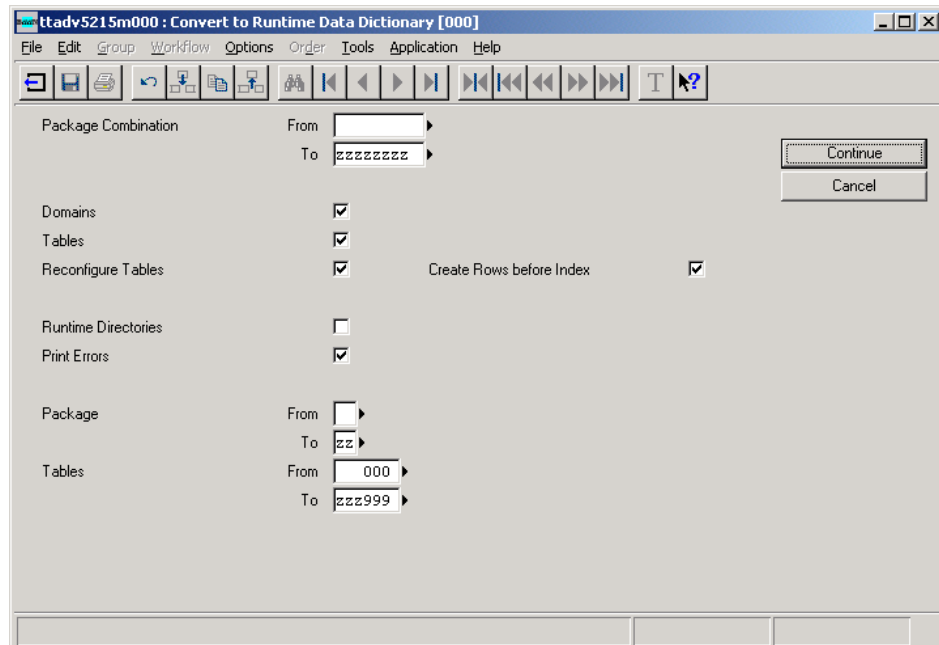
- 2 Scan the PMC dumps through the Scan Solution File (ttpmc2200m000) session. In this session you must select the **Overwrite** check box. The PMC dumps that you must scan depend on the extensions that you use in your package combinations.

You must always scan the PMC dump for the standard software (spb40c4_16stnd). In addition, you must scan one or more of the following PMC dumps:

- For the Dutch localization: spb40c4_16nl10.
- For the Japanese localization: spb40c4_16jap0.
- For the French localization: spb40c4_16fre0.
- For the Italian localization: spb40c4_16itl0.
- For the Supply Chain-Italian localization: spb40c4_16sch0, spb40c4_16sch1, and spb40c4_16its0.
- For the Nordic localization: spb40c4_16nc20.
- For the Controlling extension: spb40c4_16cnt0.
- For the Supply Chain extension: spb40c4_16sch0 and spb40c4_16sch1.
- For the Supply Chain/Controlling extension: spb40c4_16cnt0, spb40c4_16sch0, spb40c4_16sch1, and spb40c4_16scc1.
- For the Multicurrency extension: spb40c4_16mcr0.
- For the Aerospace and Defense and0 extension: spb40c4_16and0.
- For the Aerospace and Defense and1 extension: spb40c4_16and1.
- For the North American Automotive Solution extension: spb40c4_16sch0, spb40c4_16sch1, and spb40c4_16nas0.
- For the Baan Connect Kit extension: spb40c4_16bci0.
- For the iCRM integration extension: spb40c4_16crm0.
- For the Automotive Global Solution extension: spb40c4_16cnt0 and spb40c4_16ags0.

- 3 All users must now exit the environment in which the Service Pack will be installed.

- 4 Run the Process Solutions (ttpmc2101m000) session to process the PMC dumps that you scanned in step 2. This session consists of two parts: the Check Solution to Install (ttpmc2203s000) session and the Install Solution (ttpmc2205s000) session. In the Install Solution session, you must select the **Pre-Installation Instructions Followed Up** check box, otherwise, the Service Pack will not install.
- 5 Start the Convert to Runtime Data Dictionary (ttadv5215m000) session for all package combinations. Select all of the check boxes in this session to reconfigure the tables, because some tables were modified for bug fixing.



- 6 Exit and restart the bshell.

- 7 If you use the ASCII help viewer, run the Create Runtime Help (ttadv5230m000) session for the languages and update VRC's that you are using. Select the check boxes as shown in the following figure:

ttadv5230m000 : Create Runtime Help [000]

File Edit Group Workflow Options Order Tools Application Help

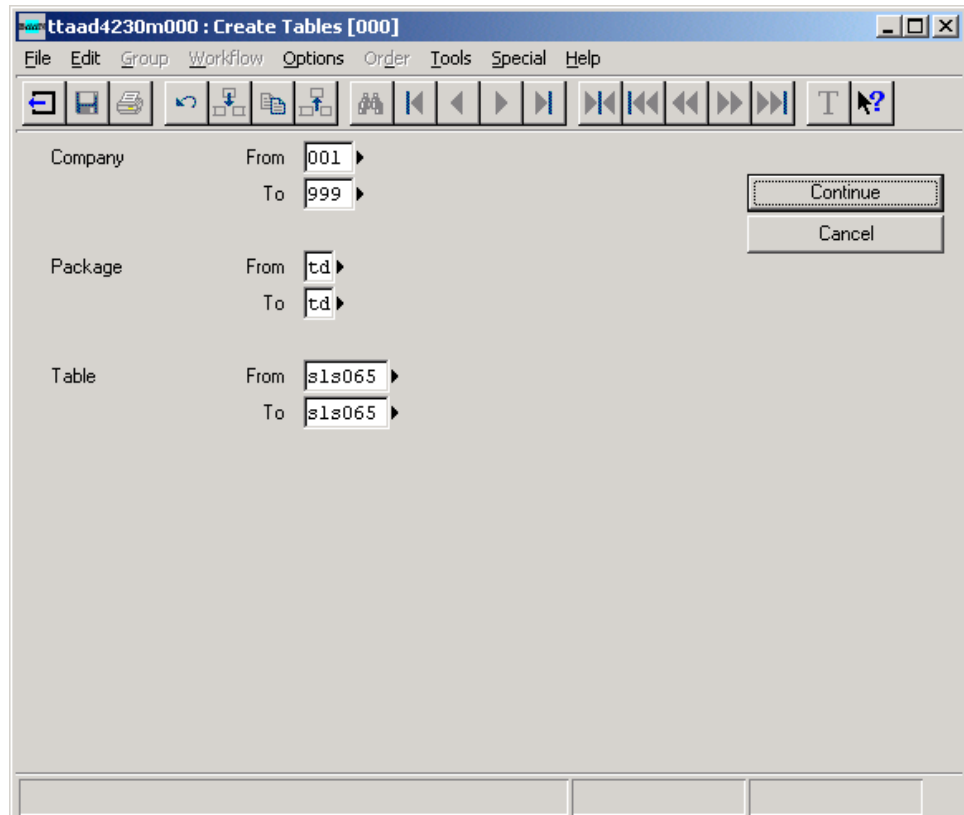
Form 1 Form 2

Package From To
Version B40U B40U
Release c4 c4
Customer zzzz
Language 1 4

Continue
Cancel

Domains ☒ Menus ☒
Tables ☒ Messages ☒
Table Fields ☒ Questions ☒
Labels ☒ Sessions ☒
Forms ☒ Business Objects ☒
Form Fields ☒ Reports ☒

- 8 Start the Create Tables (ttaad4230m000) session to create the new table tdsIs065. The session then physically creates the new table that was added to the Service Pack.



- 9 Exit and restart the bshell.
The installation of the Service Pack is ready. All users can now start to use the environment.

Post-installation instructions

After you install the Service Pack, take the following steps:

- 1 If you use Business Processes in the DEM module in combination with Worktop as a user interface, Worktop 2.2.34 or a newer version of Worktop must be installed. Refer to solutions 139818 and 140549 for more information. You can find the latest version of Worktop on the SSA One Point Support (Baan) Web site under solution number 13964.

If you did not install solution 140170 prior to installing the Service Pack, then the directory 'cache' in the Worktop directory needs to be emptied after installing the Service Pack. Refer to solution 140170 for more information.

- 2 This step is only relevant if you use the Aerospace and Defense (AND1) extension of Baan IVc4 and solution 162639 was not installed in the Update VRC for the AND1 extension prior to installing the Service Pack.

The Validate and Repair Open Subcontracting PO's (tdcor9901m00b) session must be run after installing the Service Pack and before any Subcontracting Purchase Order Receipts are processed. Refer to solution 162639 for more information about this correction session and the enhancements made for split production orders in the AND1 extension.

- 3 This step is only relevant if you use the Aerospace and Defense (AND0 or AND1) extension of Baan IVc4 and solutions 141303 and 141628 were not installed in the Update VRC for the AND0 or AND1 extension prior to installing the Service Pack.

The Fix tipgc500.has2 field (otisor9306) session must be run after installing the Service Pack. Refer to solutions 141303 and 141628 for more information about this correction session.

- 4 Incorrect records were created in the Sales Quotation Line History (tdsls011) table when Sales Quotations are cancelled. This has been solved in solutions 141626 and 143825, which are included in this Service Pack. If you want to remove these incorrect records, you need to download and install a correction session via solution 142208 after installing the Service Pack (this solution is not included in the Service Pack).

Source codes of PMC Service Packs

Solutions and Service Packs created by SSA Global and installed through the PMC tool have the source code of modified components included. However, the source codes of program scripts, libraries, and functions are only installed if a previous version of the source code of the component exists in the environment in which the solution or Service Pack is installed.

For example, if a fix is produced for solution 71291 in the program script tdilc4202, the PMC dump for this solution contains the program script source and the program object.

This solution is installed at system X in the update VRC B40U_c4_stnd. Before you install the program script source, the PMC tool checks whether the program script source exists in the update VRC, or in a VRC that is in the derived-from structure for the update VRC.

If the program script source of tdilc4202 already exists, the new program script source and the program object are installed from the PMC dump of the solution. If the program script source is not found, only the program object is installed.

Before you begin the installation of a solution or Service Pack through PMC, SSA Global alliances or customers who need the source codes must make sure that the sources exist in the environment in which the solutions or Service Packs are installed.

Chapter 3

Functional enhancements and important solutions

3

This chapter describes the most important functional enhancements and important solutions for Service Pack 16. The following enhancements and important solutions were introduced:

- Archiving (Sales/Purchase): Option to archive sales and purchase orders
- Fin. ACP/ACR: Reports can print from archive company
- Distr. Location Control: Rebuild Inventory Data (ILC)
- Distr. Purchase/Sales: Process Delivered Orders
- Distr. Sales: Date for posting Commissions/Rebates
- Aerospace & Defense AND1: Split Production Orders and Subcontracting
- Automotive: New SSC Parameter for "Step Size for Supply Chain"
- Tools PMC: Installation improvements
- Baan IVc4: Other

Archiving (Sales/Purchase): Option to archive sales and purchase orders

Short description of the enhancement

New sessions Archive and/or Delete Purchase Orders (tdpur4227m000) and Archive and/or Delete Sales Orders (tdsls4227m000) are created to archive and/or delete purchase orders and sales orders.

The sessions Archive and/or Delete Sales Order History (tdsls5202m000) and Archive and/or Purchase Order History (tdpur5202m000) have been created to archive and/or delete order history.

Also, the delete option present in the sessions Print and/or Delete Sales Order History (tdsls5201m000) and Print and/or Delete Purchase Order History (tdpur5201m000) has been removed. Hence, the sessions are renamed to Print Sales Order History (tdsls5201m000) and Print Purchase Order History (tdpur5201m000).

New or changed software components

For a detailed overview of new or changed software components, refer to solutions 164461 and 164474 in the document componentlist_stnd.

Customer implication

You can start using this enhancement immediately.

Fin. ACP/ACR: Reports can print from archive company

Short description of the enhancement

Four new sessions have been created which can select the invoices in the live company and in the archive company:

- 1 Sales Invoices from Actual and Archive Company (tfacr4421m000)
- 2 Customer Balance from Actual and Archive Company (tfacr4424m000)
- 3 Purchase Invoices from Actual and Archive Company (tfacp4421m000)
- 4 Supplier Balance from Actual and Archive Company (tfacp4424m000)

New or changed software components

For a detailed overview of new or changed software components, refer to solution 139312 in the document componentlist_stnd.

Customer implication

You can start using this enhancement immediately.

Distr. Location Control: Rebuild Inventory Data (ILC)

Short description of the enhancement

Enhancements in the Rebuild Inventory Data (ILC) (tdilc0250m000) session:

- Enabled selection range in the session so that users can run for required range of project / item / container.
- Now the session will rebuild blocked stock in INV company also

New or changed software components

For a detailed overview of new or changed software components, refer to solution 140908 in the document componentlist_stnd.

Customer implication

You can start using this enhancement immediately.

Distr. Purchase/Sales: Process Delivered Orders

Short description of the enhancement

The Process Delivered Purchase Orders (tdpur4223m000) session and the Process Delivered Sales Orders (tdsls4223m000) session have been modified such that:

- It is possible only to process the orders. Deletion of the orders has to be done through the Archive and/or Delete Purchase Orders (tdpur4227m000) session and the Archive and/or Delete Sales Orders (tdsls4227m000) session.
- It is possible for the users to select the range of orders to be processed.

New or changed software components

For a detailed overview of new or changed software components, refer to solution 164842 in the document componentlist_stnd.

Customer implication

This functionality has been modified and needs careful attention for the users.

Distr. Sales: Date for posting Commissions/Rebates

Short description of the enhancement

When posting Commission or Rebate Reservations to Finance, the Process Commissions/Rebates (tdcms2201m000) session used the system's current date as the transaction date in Finance. This can be a problem at the end of a period. Careful customers will check their commission and rebate calculations before approving and processing them. This can take time.

The Reservation calculation can take place in one period and the actual posting can occur in the next. The Reservation should be posted in the period it was calculated.

Rebate and Commission Reservation integrations will now be booked in the period they were calculated in, on the date they were calculated. This is a functional modification since reservations used to be logged on the system's current date. This change will align reservation-booking functionality with the rest of CMS and Sales. It is possible to back date Sales and CMS Invoices.

New or changed software components

For a detailed overview of new or changed software components, refer to solution 164770 in the document componentlist_stnd.

Customer implication

This functionality has been modified and needs careful attention for the users of commissions and rebates.

Aerospace & Defense AND1: Split Production Orders and Subcontracting

Short description of the enhancement

The release of the AND1 extension allowed subcontracting commitments to be created. However, now any subcontracting receipts processed after a Production Order is split, may result in data corruption. New fields were added to the Receipts Distribution table and the Subcontracting Distribution table to avoid data corruption. A new Default employee field was also added to improve the ability to trace transactions during the split order process.

For a detailed explanation of this modification, refer to the 162639and1 document, which can be found in the Documentation folder of the CD-ROM.

New or changed software components

For a detailed overview of new or changed software components, refer to solution 162639 in the document componentlist_and1.

Customer implication

This functionality has been modified and needs careful attention for the users of the AND1 extension.

Automotive: New SSC Parameter for "Step Size for Supply Chain"

Short description of the enhancement

A new parameter has been added to the SSC Parameters (tdssc000) table, which will handle the incrementing of the planned delivery lines throughout Supply Chain. The parameter is "Step Size for Supply Chain" (tdssc000.sssc). The parameter has a valid range of 1 to 10. 10 being the default value. If this default value is used there will be no noticeable difference in the supply chain sessions. If a number other than 10 is used then the incrementing of lines within planned deliveries will be changed from increments of 10 to the number selected. By lowering the increment number one can increase the number of lines/items that can be on each planned delivery.

New or caged software components

- For a detailed overview of new or changed software components, refer to solution 141260 in the document componentlist_ags0, componentlist_sch0 or componentlist_sch1.

Customer implication

You can start using this enhancement immediately.

Tools PMC: Installation improvements

Short description of the enhancement

After the major updates in PMC of the last two years (PMC Improvements for Recipients (122399) and PMC B-Language Support (123464)), there were still some areas in PMC recipient, which could be improved.

These areas were:

- Check to Install
- Check and Install
- Check to Uninstall
- Uninstall

For the areas mentioned above a number of enhancement requests of several customers were gathered into one PMC improvement project, and this solution is the result of this significant optimization in PMC Recipient.

The topics are:

- Improved reporting for the Check to Install:
 - All possible errors are shown in the first section of the report (Note that if you use an own script to examine the check report, you have to adapt this script to the new layout)
 - The components of the solutions being checked can be printed independently of the customization check
 - The performance of the customization check has been improved
 - You have an option to check the solutions without changing the status to 'To Install'
 - Pre- and Post-Installation Instructions are printed in a separate section of the report
 - The detailed print contains all data by solution
 - During a Service Pack check, extra checking is done to prevent a Service Pack being installed without having the previous Service Pack completely installed

- The new report layout also applies to the Check to Uninstall. There are two sections: 1) a list of all solutions to be uninstalled with possible errors and 2) an optional detailed print of the solutions
- Installed solutions can be checked (for example for customizations or installation instructions). This functionality can be activated from a new session, which gives an overview of all Installation Runs ("Installation Runs" (ttpmc2503m000) session)
- If you install a range of solutions, you can select only tools solutions, only application solutions or both
- It is possible to uninstall all solutions that were installed together in one go:
 - This functionality can also be activated from the new session, which gives an overview of Installation Runs (ttpmc2503m000)
 - (Check to) Uninstall by Installation Run
 - Also an overview is present to see all solutions, which were installed in one Installation Run
- During uninstall, post-requisite dependencies can be ignored
- The check on missing languages has been removed, because this functionality is not needed anymore because of the B-Language Support in PMC

New or changed software components

For a detailed overview of new or changed software components, refer to solution 139594 in the document componentlist_tools.

Customer implication

For more information about the new options, please refer to the online help information.

Baan IVc4: Other

The table below gives an overview of other (small) functional modifications and optimizations in the Service Pack. For more details please refer to the detailed solution descriptions of the concerning solutions in the release notes documents which are in the Documentation folder of the CD-ROM.

Area / Extension	Solution	Description
Archiving (ILC/INV)	164675	"Delete Only" option has been added in the archiving sessions
Finance ACP	140509	Searching on Subcontractor in "Display Remittance agreements" has been added
Finance ACR	138944	Tax number required for EU customers if shifted tax is used
Finance ACR	140178	Interest invoices without tax can be posted to tax analysis table
Finance ACP/ACR	140505	It is not possible anymore to correct an invoice after write off currency differences
Finance CMG	140463	Cash management sessions can not be started anymore in a logistic company
Finance CMG	141520	The countries Cyprus (CY), Estonia (EE), Latvia (LV), Lithuania (LV) and Slovak Republic (SK) can now be used for IBAN functionality as well.
Finance CMG	141730	Composing limit in the payment method enlarged from 99 to 9999
Manuf. HRA	141779	Option to prevent processing of hours by users
Manuf. SFC	140990	A new option has been introduced which allows the user to print planned receipts in all warehouses
Process PMG	140900	A new option has been introduced which allows the user to print planned receipts in all warehouses

Project PSS	141820	Possibility to select Purchase Budget or PRP Purchase orders while Transferring Planned Purchase orders
Project PTC	141816	Option to print purchase budget lines based on status has been added
Ags0	165076	Unit Conversion, Multiple Lot handling, and Partial Approvals in the Maintain Approvals (tdilc4123s000) session for AGS.
Ags0 / nas0 / sch1	139887	Two or more 'Live' / 'Prototype' contracts can be defined for same supplier and item but with different effective periods
Ags0 / nas0 / sch1	165102	Confirm DC Shipments after Contract Effective dates
And0 / and1	163822	Serial number field enlarged for TCL transactions
And1	140548	Adding a new field "country" in table "ACRNs by contract line items (tppdm971)" and related changes in various session/reports.