



forward faster

►► SSA® Baan Dimensions 6.0

Installation and Deployment Guide for Service Pack 15

Copyright © 2004 by Baan International B.V., a subsidiary of SSA Global Technologies, Inc.

All rights reserved. No part of this publication may be reproduced, stored in a retrieval system, or transmitted in any way or by any means, including, without limitation, photocopying or recording, without the prior written consent of Baan™ International B.V.

Important Notices

The material contained in this publication (including any supplementary information) constitutes and contains confidential and proprietary information of Baan International B.V.

By gaining access to the attached, you acknowledge and agree that the material (including any modification, translation or adaptation of the material) and all copyright, trade secrets and all other right, title and interest therein, are the sole property of Baan International and that you shall not gain right, title or interest in the material (including any modification, translation or adaptation of the material) by virtue of your review thereof other than the non-exclusive right to use the material solely in connection with and the furtherance of your license and use of software made available to your company from Baan International pursuant to a separate agreement ("Purpose").

In addition, by accessing the enclosed material, you acknowledge and agree that you are required to maintain such material in strict confidence and that your use of such material is limited to the Purpose described above.

Although Baan International has taken due care to ensure that the material included in this publication is accurate and complete, Baan International cannot warrant that the information contained in this publication is complete, does not contain typographical or other errors, or will meet your specific requirements. As such, Baan International does not assume and hereby disclaims all liability, consequential or otherwise, for any loss or damage to any person or entity which is caused by or relates to errors or omissions in this publication (including any supplementary information), whether such errors or omissions result from negligence, accident or any other cause.

Baan International B.V., is a wholly owned subsidiary of SSA® Global Technologies™, Inc.

Trademark Acknowledgements

SSA Global, SSA and the SSA Global logo are trademarks of SSA Global Technologies, Inc. in the United States and/or other countries. Baan is a trademark of Baan International B.V., in the United States and/or other countries.

All other company, product, trade or service names referenced may be registered trademarks or trademarks of their respective owners.

Publication Information

Document code	: U8435A US
Release	: SSA® Baan Dimensions 6.0
Document title	: Installation and Deployment Guide for Service Pack 15
Publication date	: April 04

Table of Contents

Chapter 1	Introduction	1-1
	Contents	1-2
Chapter 2	To install the Service Pack	2-1
	Preinstallation requirements	2-1
	To install the Service Pack	2-2
	Source codes of PMC Service Packs	2-4
	Derived-from VRC structure for SSA® Baan Dimensions 6.0 SP15 localizations	2-6
Chapter 3	Functional enhancements and important solutions	3-1
	Order control	3-1
	Purchase control/sales control	3-2
	Shop floor control/Transformation order control	3-3

About this Guide

This document is an Installation and Deployment Guide that describes the contents of Service Pack 15 and how to install Service Pack 15 on Baan Dimensions 6.0. This document is intended for Baan IVc4 installers and system administrators.

This document includes the following chapters:

- Chapter 1, "Introduction," briefly describes Service Pack 15 for Baan Dimensions 6.0.
- Chapter 2, "To install the Service Pack," describes how to install Service Pack 15.
- Chapter 3, "Functional enhancements and important solutions," describes the most important functional enhancements and important solutions of Service Pack 15 for Baan Dimensions 6.0.

Send us your comments

We continually review and improve our documentation. Any remarks/requests for information concerning this document or topic are appreciated. Please e-mail your comments to kd@baan.com.

In your e-mail, refer to the document number and title. More specific information will enable us to process feedback efficiently.

Service Pack 15 is intended for users of Baan Dimensions 6.0 and can only be used to upgrade existing Baan Dimensions 6.0 installations

Service Pack 15 contains the following:

- All Baan IV bug fixes from July 14, 2003, through December 14, 2003, that had to be built into the Baan Dimensions software.
- All Baan Dimensions bug fixes from August 1, 2003, through December 18, 2003.

You can install the Service Pack by means of the PMC tool on the following hardware platforms:

- UNIX
- Microsoft Windows

You can use the tool to install individual solutions, which you can download from the SSA One Point Support (Baan) Web site, or to install Service Packs.

The following table lists the extensions and languages for which the Service Pack is available:

Extension	Code	Dutch (1)	English (2)	German (3)	French (4)	Swedish (9)
Baan Dimensions 6.0 SP15	B40C_c4_m600	X	X	X	X	
Overlap Baan Dimensions 6.0 SP15 and Controlling (cnt0)	B40C_c4_mc06		X	X		
Overlap Baan Dimensions 6.0 SP15 and the French localization (fre0)	B40C_c4_mf06		X		X	
Overlap Baan Dimensions 6.0 SP15 and the Nordic localization (nc20)	B40C_c4_mn06		X			X

Translations for any other languages are delivered only upon request.

Contents

The Service Pack CD-ROM contains the following files and folders:

SPB40c4_15m600 folder

This folder contains all the files that are required to update the Baan Dimensions 6.0 software. The folder contains the following files:

- spb40c4_15m600:
This PMC dump contains fixes for the Baan Dimensions 6.0 extension software and the new functionality for the extension software.
- spb40c4_15mc06:
This PMC dump contains fixes for the overlap with the Controlling extension.
- spb40c4_15mf06:
This PMC dump contains fixes for the overlap with the French localization.
- spb40c4_15mn06:
This PMC dump contains fixes for the overlap with the Nordic localization.
- One additional solution for Baan standard (140596stnd)

Documentation folder

The documentation directory of the Service Pack CD-ROM contains the following documentation:

- *Installation and Deployment Guide for Baan Dimensions 6.0 Service Pack 15* (U8435A US)
- Overview of solution numbers
- Overview of customization parts

Preinstallation requirements

Before you can install Service Pack 15, the following preinstallation requirements are applicable:

- spb40c4_15m600:
 - All Service Packs through spb40c4_15stnd
 - Solution 140596stnd
 - All Service Packs through spb40c4_14m600
- spb40c4_15mc06:
 - All Service Packs through spb40c4_15stnd
 - Solution 140596stnd
 - All Service Packs through spb40c4_15cnt0
 - All Service Packs through spb40c4_15m600
 - All Service Packs through spb40c4_14mc06

- spb40c4_15mf06:
 - All Service Packs through spb40c4_15stnd
 - Solution 140596stnd
 - All Service Packs through spb40c4_15fre0
 - All Service Packs through spb40c4_15m600
 - All Service Packs through spb40c4_14mf06
- spb40c4_15mn06:
 - All Service Packs through spb40c4_15stnd
 - Solution 140596stnd
 - All Service Packs through spb40c4_15nc20
 - All Service Packs through spb40c4_15m600
 - All Service Packs through spb40c4_14mn06

Ensure that sufficient free disk space is available. To install the Service Pack, you must have at least 500 MB free disk space available. Note that the required space for the dimensions data depends on the database management system that you run.

Note

An actual backup of the \$BSE environment is available, as well as a backup of the actual data. If you do not have an actual backup, you must create a back up before you start the installation procedure.

To install the Service Pack

The process to install Service Pack 15 for Baan Dimensions 6.0 consists of the following general steps:

- 1 Install additional solutions.
- 2 Copy and scan Service Pack 15.
- 3 Install Service Pack 15.

The following sections describe each of these steps in greater detail.

Install additional solutions

Service Pack 15 (spb40c4_15m600) contains several solutions that interact with solutions for Baan IV c4. For this reason, you must install solution 140596 before you can install Service Pack 15 for Baan Dimensions 6.0. If this solution is not yet installed, first install this solution in the update VRC of Baan IVc4. You can find the solution on the CD-ROM.

Copy and scan Service Pack 15

To copy and scan the Service Pack, take the following steps:

- 1 Copy the following files that correspond to the type of system on which you work:

UNIX users:

Copy the files from the CD-ROM to a temporary directory on your local system. Use FTP to transfer the data from the temporary local directory to the Baan root directory, for example, \${BSE}/tmp/dumps.

Windows NT users:

Copy the files from the CD-ROM to the tmp folder in the Baan root directory (\$BSE), for example: e:\baan\tmp\dumps.

- 2 Be sure to install the components of Service Pack 15 in the same update VRCs that you use for Service Pack 14. If SSA Global alliances or customers want to upgrade customizations to the level of Service Pack 15, these alliances or customers can install Service Pack 15 in a separate update VRC. To do so, SSA Global Alliances or Customers must manually create new update VRCs in PMC and install solution 73854 from the SSA One Point Support (Baan) Web site. Be sure to read the instructions of the solution. Note that you can no longer uninstall solutions. For best results, avoid using solution 73854, and install the solutions in the same update VRC as Service Pack 14.
- 3 Scan the PMC dumps with the Scan Solution File (ttmpc2200m000) session. The PMC dumps that you must scan depend on the extensions that you use in your package combinations. You must always scan the PMC dump for the Baan Dimensions 6.0 SP15 extension software (spb40c4_15m600). In addition, you must scan one or more of the following PMC dumps:
 - For the overlap with Controlling: spb40c4_15mc06.
 - For the overlap with the French localization: spb40c4_15mf06.
 - For the overlap with the Nordic localization: spb40c4_15mn06.

For more information, refer to “Derived-from VRC structure for Baan Dimensions 6.0 SP15 localizations,” later in this chapter.

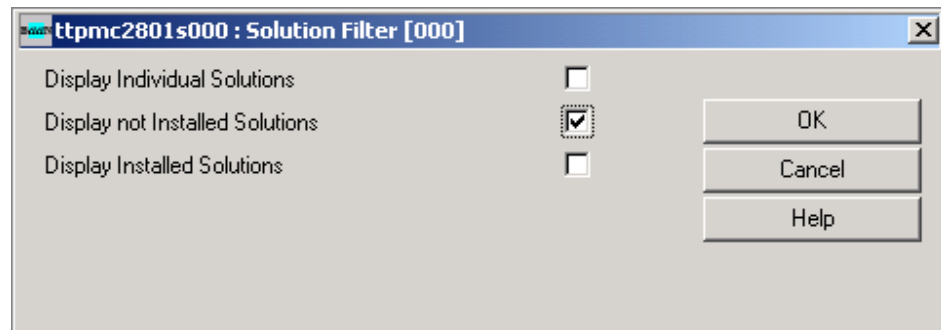
Install the Service Pack

To install the Service Pack 15, take the following steps:

- 1 In the Process Solutions (ttpmc2101m000) session, process the PMC dumps that you copied and scanned in the previous process.

Note

If you process the solution in the Process Solutions (ttpmc2101m000) session, click **Filter** and change the settings, as shown in the following figure. As a result, only the SPB40c4_15m600 solutions appear.



- 2 Run the Create Runtime Data Dictionary (ttadv5210m000) session for the 40Ccm600 package combination and all derived package combinations.
- 3 Run the Create Runtime Data Dictionary (Forms and Menus) (ttadv5214m000) session for all the B40C_c4_m600 packages.
- 4 Run the Create Tables (ttaad4230m000) session to create tables for all companies on B40C_c4_m600.

Source codes of PMC Service Packs

Solutions and Service Packs created by SSA® Global and installed through the PMC tool include the source code of modified components. However, the source codes of program scripts, libraries, and functions are only installed if a previous version of the source code of the component exists in the environment in which the solution or Service Pack is installed.

For example, if a fix is created for solution 71291 in the program script `tdilc4202`, the PMC dump for this solution contains the program script source and the program object. This solution is installed at system X in the update VRC `B40U_c4_stnd`. Before you install the program script source, the PMC tool checks whether the program script source exists in the update VRC, or in a VRC that is in the derived-from structure for the update VRC.

If the program script source of `tdilc4202` already exists, the new program script source and the program object are installed from the PMC dump of the solution. If the program script source is not found, only the program object is installed.

Before you begin the installation of a solution or Service Pack through PMC, SSA® Global alliances or customers who need the source codes must make sure that the sources exist in the environment in which the solutions or Service Packs are installed.

Derived-from VRC structure for SSA® Baan Dimensions 6.0 SP15 localizations

Overlap with Controlling (cnt0) extension



B40_c4



B40U_c4_stnd

VRC for patches and solutions on Baan IVc4. Make sure you installed Service Pack 15 in this VRC.



B40L_c4_cnt0



B40U_c4_cnt0

VRC for patches and solutions on the Controlling (cnt0) extension. Make sure you installed Service Pack 15 in this extension VRC.



B40C_c4_m600

VRC that contains the initial Baan Dimensions 6.0 extension software and patches, and solutions. Make sure that you install Service Pack 15 (SPB40c4_15m600) in this extension VRC.

B40C_c4_mc06

VRC with overlap between Baan Dimensions 6.0 and the Controlling (cnt0) extension. In this overlap VRC, you must install the Service Pack 15 (spb40c4_15mc06) overlap.

Overlap with French (fre0) localization



B40_c4



B40U_c4_std

VRC for patches and solutions on Baan IVc4. Make sure that you installed Service Pack 15 in this VRC.



B40L_c4_fre0



B40U_c4_fre0

VRC for patches and solutions on the French (fre0) localization. Make sure that you installed Service Pack 15 in this localization VRC.



B40C_c4_m600

VRC that contains the initial Baan Dimensions 6.0 extension software, patches, and solutions. Make sure that you install Service Pack 15 (SPB40c4_15m600) in this extension VRC.

B40C_c4_mf06

VRC with overlap between Baan Dimensions 6.0 and the French (fre0) localization. In this overlap VRC, you must install the Service Pack 15 (spb40c4_15mf06) overlap.

Overlap with Nordic (nc20) localization

**B40_c4****B40U_c4_stnd**

VRC for patches and solutions on Baan IVc4. Make sure you installed Service Pack 15 in this VRC.

**B40L_c4_nc20****B40U_c4_nc20**

VRC for patches and solutions on the Nordic (nc20) localization. Make sure you installed Service Pack 15 in this localization VRC.

**B40C_c4_m600**

VRC that contains the initial Baan Dimensions 6.0 extension software and patches, and solutions. Make sure that you install Service Pack 15 (SPB40c4_15m600) in this extension VRC.

B40C_c4_mn06

VRC with overlap between Baan Dimensions 6.0 and the Nordic (nc20) localization. In this overlap VRC, you must install the Service Pack 15 (spb40c4_15mn06) overlap.

Chapter 3

Functional enhancements and important solutions

3

This chapter describes the most important functional enhancements and important solutions for Service Pack 15. Some solutions can affect your current method of working. The following points are noteworthy:

IMPORTANT: The Dimension specific changes with respect to the option to enlarge order numbers will be included in Service Pack 16.

Order control

Solution 137061

If inventory corrections are made due to scrapping of remaining quantities or extra delivery of shortage quantities, from now on, records are also created in the Warehouse Orders by Item (tdinv100) table and the Inventory Corrections by IDno (tdlra014) table.

Solution 137608

If a new GDP detail is inserted, the default value for the **Detail Group** field will always be zero.

Solution 138934

During delivery, the check of whether the actual (inventory) spec values are within the tolerances as defined on order level is no longer carried out for info specs.

Solution 139518

In several print sessions, you can specify which specs must be printed. If the **Dimensions** option is chosen, from now on, the basic dimensions, as defined in the Maintain Basic Dimension Data by Item (Group) (tdmdm0111m000) session, will be printed instead of the specs that are present in the dimension set.

Purchase control/sales control

Solution 136818

If a quotation is blocked due to an overdue invoice or a doubtful customer this blocking is no longer removed when the quotation line is changed. For this reason, the functionality of unblocking based on margin control is unavailable for quotations. As a result, this functionality now works in the same way as for sales orders.

Solution 137548

If you zoom to inventory from sales orders or quotations, if you click **Checks**, you can define which IDnos will be shown. In the session that starts if you click this button, a new field has been added. With this field, **Preallocation in Economic Stock**, the user can specify whether preallocated quantities appears as allocations. The default value of this new field is determined by the **Preallocation in Economic Stock for Sales** parameter, which you can set in the Maintain Dimension Parameters for Distribution (tdlra0100m100) session.

Solution 139294

From now on, you can delete a delivery without details when you create a purchase order for this delivery. Only a warning will be given that a purchase order is already created for this delivery.

Shop floor control/Transformation order control

Solution 137453

If ID number texts must be inherited from transformation order input to transformation order output, these texts will be copied. In this way, you can change the text of input IDnos without affecting the text of output ID numbers, and vice versa.

Solution 138218

For valuation-controlled dimension components, the net quantity from the BOM will be taken when calculating the estimated cost price calculation of a project.

Solution 138655

If you change an existing (demand or inventory) ID number to a zero ID number, the transformable spec values of the existing ID number will be used for the new zero ID number.

Solutions 138854 and 138921

The new **Add Info Spec to Output** check box has been added to the Maintain TRO Types (tdmdm3101m000) and Maintain TRO Types by Transformation Order (tdmdm3111s000) sessions. By default, this check box is cleared.

If this new check box is cleared, the info specs of the input will not be added to the output.

If the new check box is selected, the info specs of the input will be added to the output, unless the info specs are already present for the output.

Solution 138935

Now, you can always select another font when you print production order documents.

Solution 139195

If a transformation order is set from plan to order dependent of the TRO type parameter **Link TRO with SFC**, a production order is generated. The warehouse for this production order will be the TRO output warehouse.