

Baan IVc4

**Installation and Deployment Guide -
Service Pack 14**

© 2003 Baan.

All rights reserved. No part of the material protected by this copyright may be reproduced or utilized in any form or by any means, electronic or mechanical, including photocopying, recording, broadcasting, or by any information storage and retrieval system, without permission in writing from Baan.

Baan assumes no liability for any damages incurred, directly or indirectly, from any errors, omissions or discrepancies between the software and the information contained in this document.

Document Information

Code:	U8283A US
Group:	User Documentation
Edition:	A
Date:	August, 2003

Table of contents

1	Introduction	1-1
	Contents	1-2
2	To install the Service Pack	2-1
	Preinstallation requirements	2-1
	To install the Service Pack	2-1
	Post-installation instructions	2-7
	Source codes of PMC Service Packs	2-8
3	Functional enhancements and important solutions	3-1
	Archiving (Distr/Fin): Option to archive general data or not	3-1
	<i>Short description of the enhancement</i>	3-1
	<i>New or changed software components</i>	3-1
	<i>Customer implication</i>	3-2
	Archiving (Mfg): Option to archive up to a certain date	3-2
	<i>Short description of the enhancement</i>	3-2
	<i>New or changed software components</i>	3-2
	<i>Customer implication</i>	3-2
	Common/Tools: New session to change company number after copying a company	3-2
	<i>Short description of the enhancement</i>	3-2
	<i>New or changed software components</i>	3-3
	<i>Customer implication</i>	3-3
	Distr. Inventory: Rebuild planned inventory transactions for an individual item	3-3
	<i>Short description of the enhancement</i>	3-3
	<i>New or changed software components</i>	3-3
	<i>Customer implication</i>	3-3
	Distr. Sales: EU Tax calculation based on invoice postal address	3-3
	<i>Short description of the enhancement</i>	3-3
	<i>New or changed software components</i>	3-6
	<i>Customer implication</i>	3-6
	Baan IVc4: Other	3-7

About this document

This Installation and Deployment Guide describes the contents of Service Pack 14 and how to install Service Pack 14 on Baan IVc4. This document is intended for Baan IVc4 installers and system administrators.

This guide includes the following chapters:

- Chapter 1, “Introduction,” briefly describes Service Pack 14 for Baan IVc4.
- Chapter 2, “To install the Service Pack,” describes how to install Service Pack 14.
- Chapter 3, “Functional enhancements and important solutions,” describes the most important functional enhancements and important solutions of Service Pack 14.

1 Introduction

Service Pack 14 for Baan IVc4 is intended for users of Baan IVc4.

You can use this Service Pack to upgrade existing installations.

Service Pack 14 contains all bug fixes up to July 14, 2003. In addition, Service Pack 14 contains a number of functional enhancements.

The Service Pack can be installed by means of the PMC tool on the following hardware platforms:

- UNIX
- Microsoft Windows

You can use the tool to install individual solutions, which you can download from the Baan Global Support Web site, or to install Service Packs.

The following table shows for which extensions and languages the Service Pack is available:

Extension	Code	Dutch = 1	English = 2	German = 3	French = 4
Standard Baan IVc4		X	X	X	X
Aerospace and Defense and0	And0		X		
Aerospace and Defense and1	And1		X		
Baan Connect Kit 1.1 / 1.2 / 1.3	Bci0	X	X	X	X
Controlling	Cnt0	X	X	X	X
French localization	Fre0		X		X
Italian localization	Itl0		X		
Supply Chain – Italian localization	Its0		X		
Japanese localization	Jap0		X		
North American Automotive Solution	Nas0		X	X	X
Multicurrency	Mcr0		X		
Nordic localization	Nc20		X		
Netherlands localization	Nl10	X	X		
Supply Chain – Controlling	Scc1	X	X	X	X
Supply Chain	Sch1	X	X	X	X
iCRM integration	Crm0	X	X	X	X
Automotive Global Solution	Ags0	X	X	X	X

The availability of other languages will be published at a later stage on the Baan Support Web site. Availability of these translations is published under solution number 136485.

Contents

The Service Pack CD-ROM contains the following files and folders:

- B40c4_SP14 folder:
This folder contains all the files that are required to update the Baan IVc4 software. The folder contains the following files:
 - stb40c4_14std:
This file contains fixes for Tools.

- spb40c4_14stnd:
This file contains fixes for the standard application software.
- spb40c4_14and0:
This file contains fixes for the Aerospace and Defense and0 extension.
- spb40c4_14and1:
This file contains fixes for the Aerospace and Defense and1 extension.
- spb40c4_14ags0:
This file contains fixes for the Automotive Global Solution extension.
- spb40c4_14bci0:
This file contains fixes for the Baan Connect Kit extension.
- spb40c4_14cnt0:
This file contains fixes for the Controlling extension.
- spb40c4_14crm0:
This file contains fixes for the iCRM integration extension.
- spb40c4_14fre0:
This file contains fixes for the French localization.
- spb40c4_14itl0:
This file contains fixes for the Italian localization.
- spb40c4_14its0:
This file contains fixes for the Supply Chain - Italian localization.
- spb40c4_14jap0:
This file contains fixes for the Japanese localization.
- spb40c4_14mcr0:
This file contains fixes for the Multicurrency extension.
- spb40c4_14nas0:
This file contains fixes for the North American Automotive Solution extension.
- spb40c4_14nc20:
This file contains fixes for the Nordic localization.
- spb40c4_14nl10:
This file contains fixes for the Dutch localization.
- spb40c4_14scc1:
This file contains fixes for the Supply Chain-Controlling extension.

- spb40c4_14sch0:
This file contains the first set of fixes for the Supply Chain extension.
- spb40c4_14sch1:
This file contains the second set of fixes for the Supply Chain extension.
- Documentation folder:
The documentation folder of the Service Pack CD-ROM contains the following documentation:
 - *Installation and Deployment Guide - Service Pack 14* (U8283A US).
 - Modified component and solved defect overviews, including the following:
 - Componentlist_XXXX.xls containing an overview of modified components.
 - Relnotes_XXXX.doc containing a textual description of solved defects.
 - Solutions_XXXX.txt containing an enumeration of BSS solution numbers included in the Service Pack.

These overviews are created for each of the products, either standard, localization, or extension, where XXXX in the file name stands for the related localization or extension. You can find these overviews in subfolders XXXX, where XXXX in the subfolder name stands for the related localization or extension.
- VERSION.txt:
A text file that contains the identification of the CD-ROM.

2 To install the Service Pack

Preinstallation requirements

Before you can install Service Pack 14, you must have Service Pack 13 and earlier Service Packs for Baan IVc4 installed.

Before you install the Service Pack, you must first run the Convert to Runtime Data Dictionary (ttadv5215m000) session for the full range of package combinations, packages, and tables. Select all of the check boxes in this session.

To install the Service Pack

Before you install the Service Pack 14, first check if any last minute information is available about Service Pack 14 and the installation of this Service Pack. You can find this information on the Baan Global Support Web site under solution number 136483.

For the standard Baan IVc4 software, two dumps are created: one for Tools and one for the application. The Tools solutions are in a PMC dump called stb40c4_14stnd, whereas the application solutions are in a dump called spb40c4_14stnd. The reason for this is because the PMC dump for Tools must be scanned in the Base VRC for the standard software, but the components are actually installed in the unique tools VRC B40 c4. For Tools, you cannot have an Update VRC. Therefore, the Tools components are always imported in the unique Tools VRC B40 c4, which is the live VRC. You cannot have a test VRC for Tools.

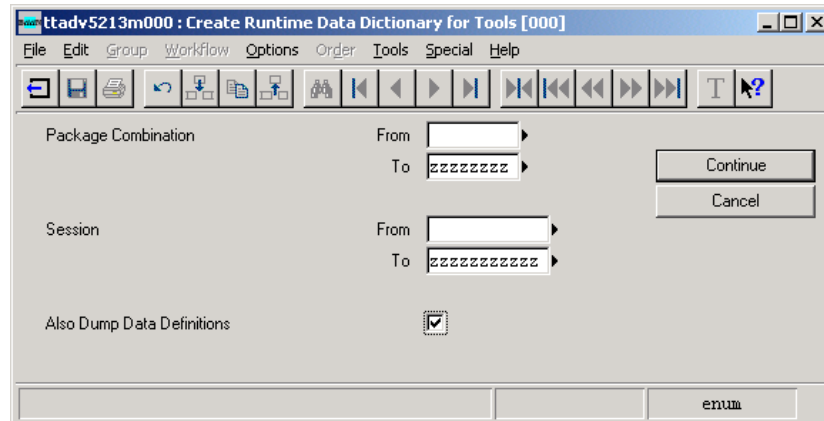
During the installation of the Service Pack, you can decide on the sequence of installing Tools and applications. You can first install the Tools dump and later on the application dumps, or first install the application dumps and later on the Tools dump. No dependency exists between these dumps. For best results, Baan recommends that you install the Tools dump first, and then install the Application dumps, however, the other way around is also possible.

For best results, install Tools and applications at the same time, however, if required, you can choose to install applications and Tools at separate times.

To install Service Pack 14 for Baan IVc4, take the following steps:

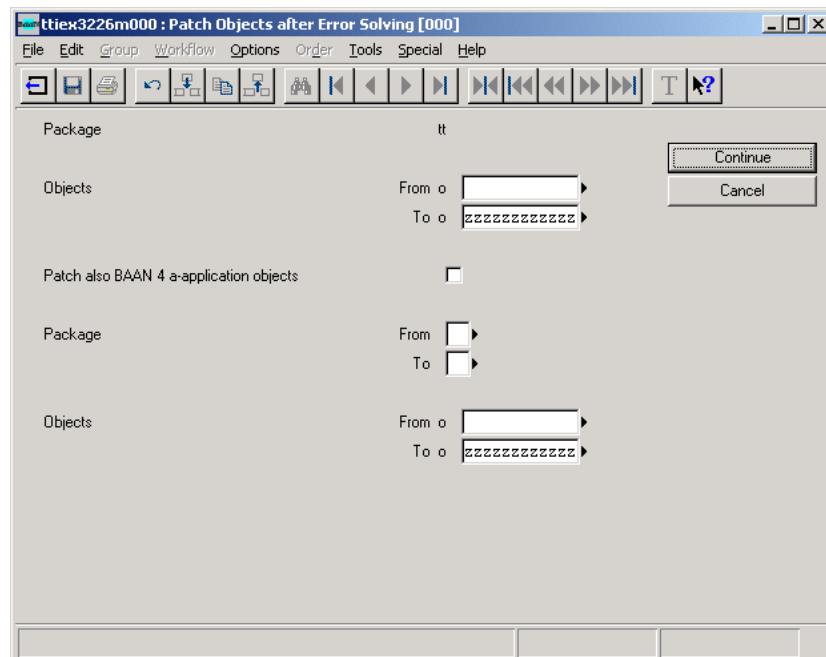
- 1 UNIX users must first copy files from the B40c4_SP14 folder of the CD-ROM to a temporary directory on the UNIX system. If you copy the files, you must use a transfer protocol in binary mode. The size of the dumps in this folder is approximately 631 MB. You do not need to transfer all files. In the following step, you can see which files are necessary for your software version.
- 2 Scan the PMC dumps. The PMC dumps that you must scan depend on the extensions that you use in your package combinations. You must always install the PMC dump for Tools (stb40c4_14stnd) and the PMC dump for the standard software (spb40c4_14stnd). In addition, you must scan one or more of the following PMC dumps:
 - For the Dutch localization: spb40c4_14nl10.
 - For the Japanese localization: spb40c4_14jap0.
 - For the French localization: spb40c4_14fre0.
 - For the Italian localization: spb40c4_14itl0.
 - For the Supply Chain-Italian localization: spb40c4_14sch0, spb40c4_14sch1, and spb40c4_14its0.
 - For the Nordic localization: spb40c4_14nc20.
 - For the Controlling extension: spb40c4_14cnt0.
 - For the Supply Chain extension: spb40c4_14sch0 and spb40c4_14sch1.
 - For the Supply Chain/Controlling extension: spb40c4_14cnt0, spb40c4_14sch0, spb40c4_14sch1, and spb40c4_14scc1.
 - For the Multicurrency extension: spb40c4_14mcr0.
 - For the Aerospace and Defense and0 extension: spb40c4_14and0.
 - For the Aerospace and Defense and1 extension: spb40c4_14and1.
 - For the North American Automotive Solution extension: spb40c4_14sch0, spb40c4_14sch1, and spb40c4_14nas0.
 - For the Baan Connect Kit extension: spb40c4_14bci0.
 - For the iCRM integration extension: spb40c4_14crm0.
 - For the Automotive Global Solution extension: spb40c4_14cnt0 and spb40c4_14ags0.

- 3 Run the Process Solutions (tppmc2101m000) session to process the PMC dumps that you scanned in the previous step. This session consists of two parts: the Check Solution to Install (tppmc2203s000) session and the Install Solution (tppmc2205s000) session. In the Install Solution session, you must select the **Pre-Installation Instructions Followed Up** check box, otherwise, the Service Pack will not install.
- 4 Start the Create Runtime Data Dictionary for Tools (ttadv5213m000) session for all package combinations. Select the **Also Dump Data Definitions** check box, as shown in the following figure:

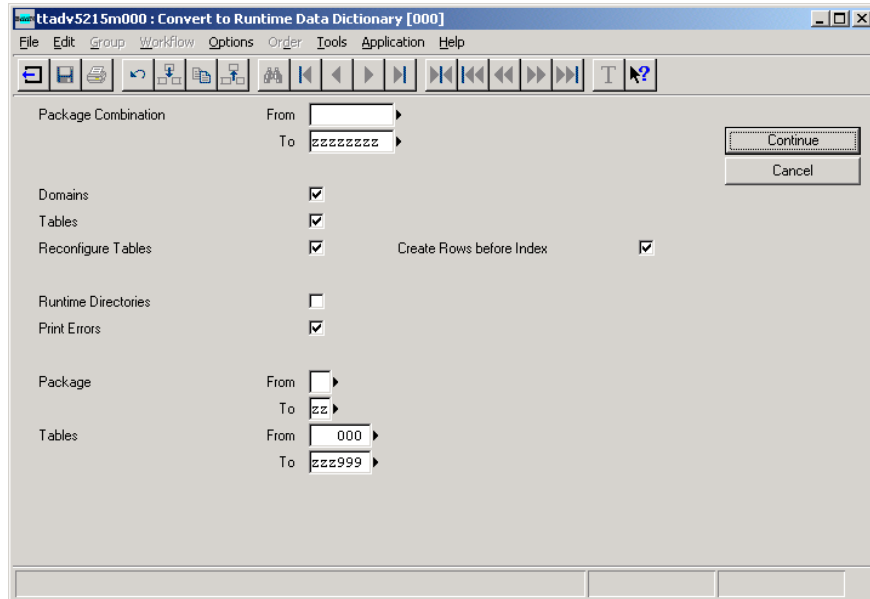


- 5 Exit the bshell. If Baan Tools components are loaded in shared memory, which is often the case on MS Windows systems, stop and restart the shared memory. Restart the bshell.

- 6 Start the Patch Objects after Error Solving (ttiex3226m000) session for all Baan Tools objects, as shown in the following figure:



- 7 Start the Convert to Runtime Data Dictionary (ttadv5215m000) session for all package combinations. Select all of the check boxes in this session to reconfigure the tables, because some tables were modified for bug fixing.



- 8 Exit and restart the bshell.

- 9 If you use the ASCII Help viewer, run the Create Runtime Help (ttadv5230m000) session for the languages and update VRCs that you are using. Select the check boxes as shown in the following figure:

ttadv5230m000 : Create Runtime Help [000]

File Edit Group Workflow Options Order Tools Application Help

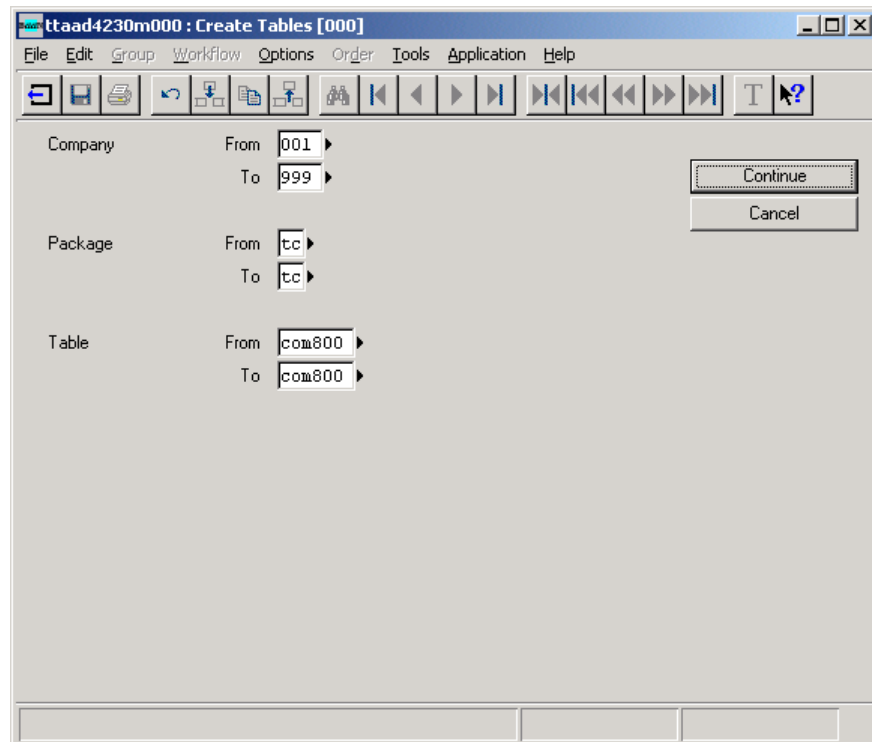
Form 1 Form 2

	From	To
Package		zz
Version	B40U	B40U
Release	c4	c4
Customer		zzzz
Language	1	4

Domains	<input checked="" type="checkbox"/>	Menus	<input checked="" type="checkbox"/>
Tables	<input checked="" type="checkbox"/>	Messages	<input checked="" type="checkbox"/>
Table Fields	<input checked="" type="checkbox"/>	Questions	<input checked="" type="checkbox"/>
Labels	<input checked="" type="checkbox"/>	Sessions	<input checked="" type="checkbox"/>
Forms	<input checked="" type="checkbox"/>	Business Objects	<input checked="" type="checkbox"/>
Form Fields	<input checked="" type="checkbox"/>	Reports	<input checked="" type="checkbox"/>

Continue Cancel

- 10 Start the Create Tables (ttaad4230m000) session to create the new tables for the applications. The session then physically creates the new application tables that were added to the Service Pack. The only table that was added in SP14, is table tcom800.



- 11 Exit and restart the bshell.

Post-installation instructions

After you install the Service Pack, take the following steps:

- 1 If you are using the BaanTQM integration of the Baan Connect Kit extension (B40L_c4_bci1 or B40L_c4_bci2) and solution 160797 was not yet installed before installing the Service Pack and you have inspections that are not closed, you must run the Update Quantity Fields for Inspection Requests (tccor0012m000) session. Not running the session will result in incorrect quantity updates for the inspection orders. Refer to solution 160797 for more information about the modification in the integration.

- 2 If you use the iPack for the integration between Baan IVc4 and iBaan Sourcing 1.0, a new version of iBaan Sourcing 1.0 must be installed. You can find the required version of iBaan Sourcing 1.0 on the Baan Global Support Web site under solution number 135952.
- 3 If you use the iPack for the integration between Baan IVc4 and iBaan Time and Expense 1.0, a new solution for iBaan Time and Expense 1.0 must be installed. You can find the solution for iBaan Time and Expense 1.0 on the Baan Global Support Web site under solution number 134337.
- 4 If you use the Performance Boosters to run multi bshells, you must have Porting Set 6.1c.06.07 or a later release of the Porting Set installed. The Porting Set is not included in the Service Pack, therefore, you must order the Porting Set separately, or download the Porting Set from solution 15219 on the Baan Global Support Web site.

Source codes of PMC Service Packs

Solutions and Service Packs created by Baan and installed through the PMC tool have the source code of modified components included. However, the source codes of program scripts, libraries, and functions are only installed if a previous version of the source code of the component exists in the environment in which the solution or Service Pack is installed.

For example, if a fix is produced for solution 71291 in the program script `tdilc4202`, the PMC dump for this solution contains the program script source and the program object. This solution is installed at system X in the update VRC `B40U_c4_std`. Before you install the program script source, the PMC tool checks whether the program script source exists in the update VRC, or in a VRC that is in the derived-from structure for the update VRC.

If the program script source of `tdilc4202` already exists, the new program script source and the program object are installed from the PMC dump of the solution. If the program script source is not found, only the program object is installed.

Before you begin the installation of a solution or Service Pack through PMC, Baan alliances or customers who need the source codes must make sure that the sources exist in the environment in which the solutions or Service Packs are installed.

3 Functional enhancements and important solutions

This chapter describes the most important functional enhancements and important solutions for Service Pack 14. The following enhancements and important solutions were introduced:

- Archiving (Distr/Fin): Option to archive general data or not
- Archiving (Mfg): Option to archive up to a certain date
- Common/Tools: New session to change company number after copying a company
- Distr. Inventory: Rebuild planned inventory transactions for an individual item
- Distr. Sales: EU Tax calculation based on invoice postal address
- Baan IVc4: Other

Archiving (Distr/Fin): Option to archive general data or not

Short description of the enhancement

Through a new form field option, the user has the flexibility to determine whether to archive general data. If the **Archive General Data** check box is not selected, the system will warn the user that this might result in reference errors in the Archive Company. If the general data is not changed from the previous run, the user can clear the **Archive General Data** check box. If the general data is not available in the archive company, the system will end with a reference error.

The user can set the maximum time the session should run. Once the maximum execution time is reached, the session will stop. If the maximum execution time is set to zero, the session will run until all the records in the given range are processed.

These enhancements have been made in most archiving sessions in the Distribution and Finance modules.

New or changed software components

For a detailed overview of new or changed software components, refer to solutions 162408 and 135425 in the document componentlist_std.

Customer implication

You can start using this enhancement immediately.

Archiving (Mfg): Option to archive up to a certain date

Short description of the enhancement

A date field has been added to several archive sessions in the Manufacturing module allowing users to archive data up to a specified date.

New or changed software components

For a detailed overview of new or changed software components, refer to solution 162512 in the document componentlist_std.

Customer implication

You can start using this enhancement immediately.

Common/Tools: New session to change company number after copying a company

Short description of the enhancement

When you copy a company to a new company number (for example, if you want to copy your operational company to a test company), you must change the company numbers in the new company with the tfgld900xm000 sessions. These sessions last long if the size of the copied company is large.

A new session, Copy Company Data (tccom0214m000), has been created, which runs much faster than the tfgld900xm000 sessions. This new session is executed after the old company is exported with the Create Sequential Dump of Table (ttaad4226m000) session and before the data is loaded in the new company through the Create Table of Sequential Dump (ttaad4226m000) session. The Copy Company Data (tccom0214m000) changes the company number in the sequential dumps, which is much faster than changing them in the database of the new company (as the tfgld900xm000 sessions did). More information about this new session can be found in solution 135762.

New or changed software components

For a detailed overview of new or changed software components, refer to solution 135762 in the document componentlist_std.

Customer implication

You can start using this enhancement immediately.

Distr. Inventory: Rebuild planned inventory transactions for an individual item

Short description of the enhancement

It was not possible to rebuild planned inventory transactions for an individual item with the Rebuild Planned Inventory Transactions (tdinv0250m000) session.

A new session Rebuild Planned Inventory Transactions (tdcor0250m000) has been created and now you can rebuild planned inventory transactions for an individual item. Refer to the session Help for information about the options available in the session. In addition, *Baan IVc4 Rebuild Planned Inventory Transactions (tdcor0250m000)*, an explanatory document about this session is available in the CD-ROM's Documentation folder.

New or changed software components

For a detailed overview of new or changed software components, refer to solution 160076 in the document componentlist_std.

Customer implication

You can start using this enhancement immediately.

Distr. Sales: EU Tax calculation based on invoice postal address

Short description of the enhancement

For EU-countries the Sales Listing was not updated correctly and also the tax calculation and tax analysis were not correct in all situations, because the system used the delivery address of the Sales Order (Line) to determine whether a record should be written to the Sales Listing table and to calculate the tax.

In the following scenario, the Sales Listing was not updated correctly and the tax calculation and tax analysis were not correct:

- The company is located in Spain (EU-country)
- The customer wants to receive the goods in France (also EU-country)
- The customer wants to get the invoice at an office in Spain.

In this case, the system logged a record in Sales Listing (tccom700) table as the system takes the country of the delivery address to determine if a record should be logged. This is incorrect, because the invoice was sent to an address in the country where your company is also located. In this case, only Intrastat should be updated, but no record should be created in the Sales Listing, because the invoice stays in the same country as the country where you are located.

In addition, the tax is calculated based on the delivery address. When the goods are delivered in another EU-country, but the invoice is sent to an address in the home country the system should calculate tax. However, because the delivery address is in another (EU-)country the system does not calculate tax at the moment.

Finally, the system writes the country of the delivery address to Finance for tax analysis. However, this should also be the country of the postal address to have a correct tax analysis.

The following enhancements are made:

- 1 A parameter, Tax based on Invoice Address, is added to the Maintain Intra EU Transaction Parameters session. When there are problems with correctly logging records to the Sales Listing table (tccom700) and with the tax calculation/analysis while the company is located in an EU-country, this parameter can be set to Yes, so the postal address of the sales order is used to determine whether a record should be written to the sales listing. The new parameter can only be set when the home country of the company is a EU-country. If the home country is not an EU-country, you cannot change the parameter in the Maintain Intra EU Transaction Parameters (tccom7100m000) session.
- 2 When the parameter is not set, the system will behave the same as before installing this solution.

- 3 When the parameter is set to Yes, the country of the postal address is written to the sales order line; the system uses this country to determine the correct tax (code) and to calculate tax. After installation of this solution, the system determines the VAT country, tax code, and tax percentage all based on the postal address instead of the delivery address as is the case currently. In addition, the tax analysis will be based on the country of the postal address instead of the country of the delivery address. It is possible to specify turnover accounts per country and tax code. When the parameter is set to Yes the system will now take the country of the postal address instead of the country of the delivery address.
- 4 The system still uses the delivery address of the sales order (line) to determine whether a record should be written to Intrastat (tccom710)
- 5 When the parameter is set the user can change the country of the delivery address for the sales order while sales order lines are present, but cannot change the country of the postal address.
- 6 When the Tax Based on Invoice Address parameter is set to Yes, the country of the postal address is the same as the country on the sales order lines. The delivery address on the header and on the order lines can be different. However, the country of specific delivery addresses on the order lines should always be the same as the country of the delivery address on the sales order header.
- 7 If the Tax Based on Invoice Address parameter is set to Yes and the user tries to change the country of the delivery address on the sales order header while sales order lines exist for that order, the system will prompt the user to indicate whether he/she wants to update the sales order lines. If a sales order line contains a specific delivery address, this address will now be deleted when the user responds that he/she wants to update the delivery address on the order lines.
- 8 Changes are also made in the Maintain Sales Quotations (tdsls1101m000/tdsls1102s000) sessions, and the Maintain Sales Contracts (tdsls3101m000/tdsls3102s000) sessions, so the country on the lines here is also based on the parameter setting.
- 9 Only when the parameter setting is set to Yes, the system will create a record in the sales listing when the situation described in the section "Situation Description" occurs. If the parameter is set to No, the system will use the delivery address to determine whether a record should be created in the sales listing.

New or changed software components

For a detailed overview of new or changed software components, refer to solution 134600 in the document componentlist_std.

Customer implication

You can start using this enhancement by changing the parameter in the Maintain Intra EU Transaction Parameters session. Please notice the following remarks:

- Because of a correct tax analysis per period, it is strongly advised to change the parameter only in between the finish of one tax period and the start of another.
- Because of possible problems in Finance it is strongly advised not to add new order lines to existing sales orders after changing the parameter. Create new sales orders instead of adding new order lines to existing orders.

Baan IVc4: Other

The following table provides an overview of other (small) functional modifications and optimizations in the Service Pack. For more details, please refer to the detailed solution descriptions of the concerning solutions in the Release Notes documents in the CD-ROM's Documentation folder.

Area / Extension	Solution	Description
Archiving (Mfg)	162848	Archive company number is not defaulting
Archiving (Proj)	133215	Tphrs tables were not taken in account when archiving project
DEM	133603	Option to suppress display of NOT authorized sub processes in the DMB
DEM	134620	Enhancements in the sessions for configuring a Baan user from DEM
Distr. INV	162153	During slow-moving analysis, extrapolation of the usage is done in situations where it is not needed
Distr. PUR	135531	Option to choose whether the Delivery Address of the Order Line needs to be printed for each order line or not is not available
Distr. RPL	162158	It is possible for the RPL order history and order line history to be deleted even if the original order and order line exists
Finance ACP	132260	New UK Law - Software enhancement required Unpaid VAT to creditors
Finance ACP	133210	Purchase invoice correction not possible for invoices with level of tax calculation as "transaction line"
Finance ACP	133841	Project information is not printed on the report "Print Receivable Invoices Checklist"
Finance ACP	134050	When after saving a Net Tax Code is changed into one of type Gross, the transaction line amount is wrongly populated
Finance ACP	134713	In Session tfacp2120s000 it was not possible to select a supplier when session is started (which will improve the performance)

Finance ACP	135051	No error report was printed if the year/period selection for GRNIYA is same as the archived year/period
Finance ACP	135162	No error report was printed if the year/period selection for GRNIYA is same as the archived year/period
Finance ACP	136055	A new selection by "Approval Date" added on form of session "Print Receivable Invoices Specifications"
Finance CMG	135127	Not possible to modify a Project related transaction` in 'Maintain Posting Data of Electronic Bank Statements'
Finance CMG	161655	1099 - MISC Enhancements
Finance FAS	134578	New report to print "Depreciation Recalculation and Revaluation Results" has been added to the session
Finance GLD	161985	Performance improvement for compression of integration transactions
Mfg PCS	161529	New session required to delete customized items & project data for archived projects
NA Taxes	160734	Tax Provider Calculation Utility combines city and district tax amounts into a local tax
Project BOP	135943	Extra field on form in order to determine whether the estimate index is printed
Project PIN	132884	Language specific unit description not printed on invoices
Tools AAD	135140	New session for creating Session Authorizations by Session/User (ttaad2132m000)
Tools BOW	134445	xmlshow for Baan 4
Tools PMC	133688	If an error occurs during the scan of a whole directory, it is not clear which solution dump caused the error
Tools PMC	133880	Possibility to initialize B-language components for a Service Pack
Tools PMC	135852	PMC doesn't report customizations of forms, menus and reports if only the dumps are present in the customization VRC
Utilities DDC	162253	A new function server "Maintain Outbound Data via DDC (tdilc4102b000)" is needed for maintaining outbound advice

Utilities DDC	162808	It is not possible to deliver cost items using the DDC function server session "Release Outbound Data via DDC" (tdilc4202b000)
Ags0	162747	MRP needs to see the Supply chain Sales requirements through the Planned Inventory
Ags0	163041	Pay on Consumption functionality update
Ags0, nas0	161979	Tag number (tisfc030.tagn) was not allowed to be used twice
Ags0, nas0	162910	Customer part number is not filled in the line item details (tfacr250) for orders processed outside of a contract
Ags0, sch1	161604	Addition of Message to require reprint of delivery documents to "Maintain Master Bill of Lading Header" (tdssc0145m000)
Ags0, sch1	162531	Advise Notes could only have 94 positions for shipments
Ags0, sch1	162974	Not able to start the session. Session ends with an error message "Company number 0 for archive not allowed"
Ags0, sch1	163007	When generating MRP purchase schedules the packaging data was not looked at
And0	163180	Field "Public Voucher by CLIN" cannot be maintained anymore
And0, and1	163003	Archive company number is not defaulting
And1	134624	lacking message when splitting unpegged orders
And1	162166	Split tax functionality removed from standard AND1 release
And1	162399	Only one transaction type allowed for all CIN invoices
And1	162432	Various ACRN related issues
And1	162630	Entering MDD shipment header is now possible
And1	162640	Advances / installments
And1	162711	Zoom session added to improve the entry for Manual Transfers
And1	162743	Repair financial transactions liability for Inventory adjustment in AND1
Bci1	160797	Quantity mismatch between Baan and Guardess Quality Navigator when completing quantities in several steps

Bci1	162891	QMS inspection orders ignored when parameter "Immediately Post Main Item to Inventory" set to 'Yes' in SFC Parameters (BCI VRC)
Crm0	162476	New functionality to generate numerical postal/delivery address in iBaan Integration Pack 4.1 for CRM
Nor0	133483	IBAN payments not possible for Swedish BankGiro file; report group 12
Nor0	134810	Original invoice number and tax details to be included for trace ability and easy reconciliation of tax