



▶▶ SSA® Baan Dimensions 6.0

Installation and Deployment Guide for Service Pack 20

© Copyright 2006 by SSA Global Technologies, Inc. and its Subsidiaries and Affiliates

All rights reserved. No part of this publication may be reproduced, stored in a retrieval system, or transmitted in any way or by any means, including, without limitation, photocopying or recording, without the prior written consent of SSA Global Technologies™, Inc.

Important Notices

The material contained in this publication (including any supplementary information) constitutes and contains confidential and proprietary information of SSA Global Technologies, Inc. or its Subsidiaries and Affiliates.

By gaining access to the attached, you acknowledge and agree that the material (including any modification, translation or adaptation of the material) and all copyright, trade secrets and all other right, title and interest therein, are the sole property of SSA Global Technologies, Inc. and/or its Subsidiaries and Affiliates and that you shall not gain right, title or interest in the material (including any modification, translation or adaptation of the material) by virtue of your review thereof other than the non-exclusive right to use the material solely in connection with and the furtherance of your license and use of software made available to your company from SSA Global Technologies, Inc. or its Subsidiaries and Affiliates (as applicable) pursuant to a separate agreement ("Purpose").

In addition, by accessing the enclosed material, you acknowledge and agree that you are required to maintain such material in strict confidence and that your use of such material is limited to the Purpose described above.

Although SSA Global Technologies, Inc. and/or its Subsidiaries and Affiliates has taken due care to ensure that the material included in this publication is accurate and complete, neither SSA Global Technologies, Inc. or its Subsidiaries or Affiliates can warrant that the information contained in this publication is complete, does not contain typographical or other errors, or will meet your specific requirements. As such, neither SSA Global Technologies, Inc. or its Subsidiaries or Affiliates assumes and hereby disclaims all liability, consequential or otherwise, for any loss or damage to any person or entity which is caused by or relates to errors or omissions in this publication (including any supplementary information), whether such errors or omissions result from negligence, accident or any other cause.

Trademark Acknowledgements

SSA, SSA Global and SSA Global Technologies are trademarks or registered trademarks of SSA Global Technologies, Inc. in the United States and/or other countries.

Baan is a registered trademark of SSA Global Technologies, Inc. in the United States and/or other countries.

All other company, product, trade or service names referenced may be registered trademarks or trademarks of their respective owners.

Publication Information

Document code: U9039A US

Release: SSA® Baan Dimensions 6.0

Publication date: May 06

Table of Contents

Chapter 1	Introduction.....	1-1
	Contents	1-2
Chapter 2	Service Pack Installation.....	2-1
	Service Pack installation	2-2
	Source codes of PMC Service Packs	2-4
	Derived-from VRC structure for Baan Dimensions 6.0 SP20 localizations	2-5
Chapter 3	Functional Enhancements and Important Solutions.....	3-1
	GDP layout data	3-1
	Item data.....	3-1
	Transformation order control.....	3-2

About this Guide

This document is an Installation and Deployment Guide that describes the contents of Service Pack 20 and how to install the Service Pack on SSA Baan Dimensions 6.0. This document is intended for Baan IVc4 installers and system administrators.

This document includes the following chapters:

Chapter 1, "Introduction," briefly describes Service Pack 20 for Baan Dimensions 6.0.

Chapter 2, "Service Pack Installation," describes the process to install Service Pack 20.

Chapter 3, "Functional Enhancements and Important Solutions," describes the most significant functional enhancements and solutions of Service Pack 20 for Baan Dimensions 6.0.

Send us your comments

We continually review and improve our documentation. Any remarks/requests for information concerning this document or topic are appreciated. Please e-mail your comments to documentation@ssaglobal.com.

In your e-mail, refer to the document number and title. More specific information will enable us to process feedback efficiently.

Service Pack 20 is intended for users of Baan Dimensions 6.0 and can only be used to upgrade existing Baan Dimensions 6.0 installations

Service Pack 20 contains:

- All Baan IV bug fixes from May 17, 2005, through November 14, 2005, that had to be built into the Baan Dimensions software
- All Baan Dimensions bug fixes from May 21, 2005, through November 18, 2005

You can install the Service Pack by means of the PMC tool on the following hardware platforms:

- UNIX
- Microsoft Windows

You can use the tool to install individual solutions, which you can download from the SSA One Point Support (Baan) Web site, or to install Service Packs.

The following table lists the extensions and languages for which the Service Pack is available:

Extension	Code	Dutch (1)	English (2)	German (3)	French (4)	Swedish (9)
Baan Dimensions 6.0 SP20	B40C_c4_m600	X	X	X	X	
Overlap Baan Dimensions 6.0 SP20 and Controlling (cnt0)	B40C_c4_mc06		X	X		
Overlap Baan Dimensions 6.0 SP20 and the French localization (fre0)	B40C_c4_mf06		X		X	
Overlap Baan Dimensions 6.0 SP20 and the Nordic localization (nc20)	B40C_c4_mn06		X			X

Translations for any other languages are delivered only upon request.

Contents

The Service Pack CD-ROM contains the following files:

- PMC dumps:
 - spb40c4_20m600
Contains fixes for the Baan Dimensions 6.0 extension software and the new functionality for the extension software
 - spb40c4_20mc06
Contains fixes for the overlap with the Controlling extension
 - spb40c4_20mf06
Contains fixes for the overlap with the French localization
 - spb40c4_20mn06
Contains fixes for the overlap with the Nordic localization

- Documents:
 - *Installation and Deployment Guide for SSA® Baan Dimensions 6.0 Service Pack 20* (U9039A US)
- Overviews:
 - Overview of solution numbers: solutions_sp20_m600.txt
 - Overview of customization parts: customization_parts_sp20_m600.txt

Chapter 2

Service Pack Installation

2

Before you can install Service Pack 20, the following preinstallation requirements are applicable:

- spb40c4_20m600
 - All Service Packs through spb40c4_20stnd
 - All Service Packs through spb40c4_19m600
- spb40c4_20mc06
 - All Service Packs through spb40c4_20stnd
 - All Service Packs through spb40c4_20cnt0
 - All Service Packs through spb40c4_20m600
 - All Service Packs through spb40c4_19mc06
- spb40c4_20mf06
 - All Service Packs through spb40c4_20stnd
 - All Service Packs through spb40c4_20fre0
 - All Service Packs through spb40c4_20m600
 - All Service Packs through spb40c4_19mf06
- spb40c4_20mn06
 - All Service Packs through spb40c4_20stnd
 - All Service Packs through spb40c4_20nc20

- All Service Packs through spb40c4_20m600
- All Service Packs through spb40c4_19mn06

Ensure that sufficient free disk space is available. You must have at least 500 megabytes (MB) available to install the Service Pack. Note that the required space for the dimensions data depends on the database management system that you run.

Note: An actual backup of the \$BSE environment is available, as well as a backup of the actual data. If you do not have an actual backup, you must create a backup before you start the installation procedure.

Service Pack installation

The process to install Service Pack 20 for Baan Dimensions 6.0 consists of the following general steps:

- 1 Copy and scan Service Pack 20.
- 2 Install Service Pack 20.

The following sections describe each of these steps in greater detail.

Copy and scan Service Pack 20

To copy and scan the Service Pack, take the following steps:

- 1 Copy the following files that correspond to the type of system on which you work:

UNIX users

Copy the files from the CD-ROM to a temporary directory on your local system. Use FTP to transfer the data from the temporary local directory to the Baan root directory, for example, \${BSE}/tmp/dumps.

Windows NT users

Copy the files from the CD-ROM to the tmp folder in the Baan root directory (\$BSE), for example, e:\baan\tmp\dumps.

- 2 Make sure that you install the components of Service Pack 20 in the same update VRCs that you use for Service Pack 19. SSA Global Alliances or customers who want to upgrade customizations to the level of Service Pack 20 can install Service Pack 20 in a separate update VRC. To do so, these users must manually create new Update VRCs in PMC and install solution 73854 from the SSA One Point Support (Baan) Web site.

Be sure to read the instructions of the solution. Note that after you install solutions, you cannot uninstall the solutions. SSA Global recommends that you avoid using solution 73854, if possible, and install the solutions in the same update VRC as Service Pack 19.

- 3 Scan the PMC dumps with the Scan Solution File (ttpmc2200m000) session. The PMC dumps that you must scan depend on the extensions that you use in your package combinations. You must always scan the PMC dump for the Baan Dimensions 6.0 SP20 extension software (spb40c4_20m600). In addition, you must scan one or more of the following PMC dumps:

- spb40c4_20mc06
For the overlap with Controlling
- spb40c4_20mf06
For the overlap with the French localization
- spb40c4_20mn06
For the overlap with the Nordic localization

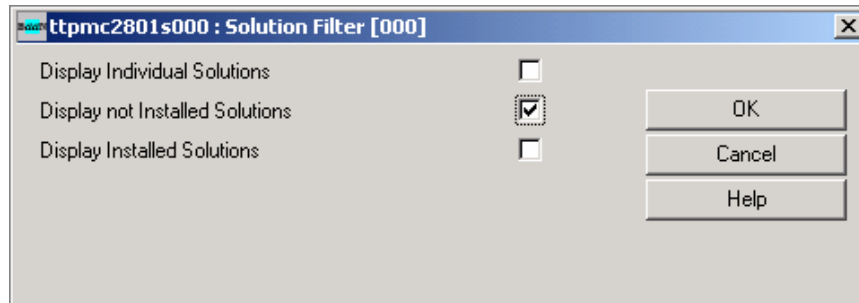
For more information, refer to “Derived-from VRC structure for Baan Dimensions 6.0 SP20 localizations,” later in this chapter.

Install Service Pack 20

To install the Service Pack 20, take the following steps:

- 1 In the Process Solutions (ttpmc2101m000) session, process the PMC dumps that you copied and scanned in the previous process.

Note: If you process the solution in the Process Solutions (ttpmc2101m000) session, click **Filter** and change the settings in the Solution Filter (ttpmc2801s000) session, as shown in the following figure. As a result, only the spb40c4_20m600 solutions appear.



- 2 Run the Create Runtime Data Dictionary (ttadv5210m000) session for the 40Ccm600 package combination and all derived package combinations.
- 3 Run the Create Runtime Data Dictionary (Forms and Menus) (ttadv5214m000) session for all the B40C_c4_m600 packages.
- 4 Run the Create Runtime Help (ttadv5230m000) session for all the B40C_c4_m600 packages.
- 5 Run the Create Tables (ttaad4230m000) session to create tables for all companies on B40C_c4_m600.

Source codes of PMC Service Packs

Solutions and Service Packs created by SSA Global and installed through the PMC tool include the source code of modified components. However, the source codes of program scripts, libraries, and functions are only installed if a previous version of the source code of the component exists in the environment in which the solution or Service Pack is installed.

For example, if a fix is created for solution 71291 in the program script tdilc4202, the PMC dump for this solution contains the program script source and the program object. This solution is installed at system X in the update VRC B40U_c4_stnd. Before you install the program script source, the PMC tool checks whether the program script source exists in the update VRC, or in a VRC that is in the derived-from structure for the update VRC.

If the program script source of tdilc4202 already exists, the new program script source and the program object are installed from the PMC dump of the

solution. If the program script source is not found, only the program object is installed.

Before you begin the installation of a solution or Service Pack through PMC, SSA Global alliances or customers who need the source codes must make sure that the sources exist in the environment in which the solutions or Service Packs are installed.

Derived-from VRC structure for Baan Dimensions 6.0 SP20 localizations

Overlap with Controlling (cnt0) extension



B40_c4



B40U_c4_stnd VRC for patches and solutions on Baan IVc4. Be sure to install Service Pack 20 in this VRC.



B40L_c4_cnt0



B40U_c4_cnt0 VRC for patches and solutions on the Controlling (cnt0) extension. Be sure to install Service Pack 20 in this extension VRC.



B40C_c4_m600 VRC that contains the initial Baan Dimensions 6.0 extension software, patches, and solutions. Be sure to install Service Pack 20 (spb40c4_20m600) in this extension VRC.

B40C_c4_mc06 VRC with overlap between Baan Dimensions 6.0 and the Controlling (cnt0) extension. In this overlap VRC, you must install the Service Pack 20 overlap (spb40c4_20mc06).

Overlap with French (fre0) localization



B40_c4



B40U_c4_stnd VRC for patches and solutions on Baan IVc4. Be sure to install Service Pack 20 in this VRC.



B40L_c4_fre0








B40U_c4_fre0 VRC for patches and solutions on the French (fre0) localization. Be sure to install Service Pack 20 in this localization VRC.



B40C_c4_m600 VRC that contains the initial Baan Dimensions 6.0 extension software, patches, and solutions. Be sure to install Service Pack 20 (spb40c4_20m600) in this extension VRC.

B40C_c4_mf06 VRC with overlap between Baan Dimensions 6.0 and the French (fre0) localization. In this overlap VRC, you must install the Service Pack 20 overlap, spb40c4_20mf06.

Overlap with Nordic (nc20) localization

	B40_c4	
	B40U_c4_stnd	VRC for patches and solutions on Baan IVc4. Be sure to install Service Pack 20 in this VRC.
	B40L_c4_nc20	
	B40U_c4_nc20	VRC for patches and solutions on the Nordic (nc20) localization. Be sure to install Service Pack 20 in this localization VRC.
	B40C_c4_m600	VRC that contains the initial Baan Dimensions 6.0 extension software and patches, and solutions. Be sure to install Service Pack 20, spb40c4_20m600, in this extension VRC.
	B40C_c4_mn06	VRC with overlap between Baan Dimensions 6.0 and the Nordic (nc20) localization. In this overlap VRC, you must install the Service Pack 20 overlap, spb40c4_20mn06.

Chapter 3

Functional Enhancements and Important Solutions

3

This chapter describes the most important functional enhancements and important solutions for Service Pack 20. Some solutions can affect the current way of working. The following points are noteworthy:

GDP layout data

Solution 207166

The same field can be present on various forms of the GDP layout code, but the same field cannot be present twice on the same form of the GDP layout code.

Item data

Solution 206419

The check for changing the item group of an item is now less strict. If the item nature remains **Dimension Item** and the dimension formulas are defined on item level, the existence of ID numbers no longer blocks item group changes, because this change does not influence the basic dimension data of the item.

Transformation order control

Solutions 203550 and 203692

If you load the specs of requirements of group ID numbers, from now on, only the open, not-yet-delivered requirements are taken into account.

Solution 204766

When a TRO order is released, a number of fields, such as **Item** and **TRO Type**, can no longer be changed.

If a TRO order is not yet released and has no details, the TRO type of an existing order can only be changed to a TRO type for which the SFC-linkage is the same.

If you change the fields on the TRO header, all these changes are now also updated in the linked SFC order.