



▶▶ SSA® Baan Dimensions 6.0

Installation and Deployment Guide for Service Pack 18

© Copyright 2004 by Baan International B.V., a subsidiary of SSA Global Technologies, Inc.

All rights reserved. No part of this publication may be reproduced, stored in a retrieval system, or transmitted in any way or by any means, including, without limitation, photocopying or recording, without the prior written consent of Baan™ International B.V.

Important Notices

The material contained in this publication (including any supplementary information) constitutes and contains confidential and proprietary information of Baan International B.V.

By gaining access to the attached, you acknowledge and agree that the material (including any modification, translation or adaptation of the material) and all copyright, trade secrets and all other right, title and interest therein, are the sole property of Baan International and that you shall not gain right, title or interest in the material (including any modification, translation or adaptation of the material) by virtue of your review thereof other than the non-exclusive right to use the material solely in connection with and the furtherance of your license and use of software made available to your company from Baan International pursuant to a separate agreement ("Purpose").

In addition, by accessing the enclosed material, you acknowledge and agree that you are required to maintain such material in strict confidence and that your use of such material is limited to the Purpose described above.

Although Baan International has taken due care to ensure that the material included in this publication is accurate and complete, Baan International cannot warrant that the information contained in this publication is complete, does not contain typographical or other errors, or will meet your specific requirements. As such, Baan International does not assume and hereby disclaims all liability, consequential or otherwise, for any loss or damage to any person or entity which is caused by or relates to errors or omissions in this publication (including any supplementary information), whether such errors or omissions result from negligence, accident or any other cause.

Baan International B.V., is a wholly owned subsidiary of SSA® Global Technologies™, Inc.

Trademark Acknowledgements

SSA® Global, SSA and the SSA Global logo are trademarks of SSA Global Technologies, Inc. in the United States and/or other countries. Baan is a trademark of Baan International B.V., in the United States and/or other countries.

All other company, product, trade or service names referenced may be registered trademarks or trademarks of their respective owners.

Publication Information

Document code	: U8739A US
Release	: SSA® Baan Dimensions 6.0
Document title	: Installation and Deployment Guide for Service Pack 18
Publication date	: March 05

Table of Contents

Chapter 1	Introduction.....	1-1
	Contents	1-2
Chapter 2	To install the Service Pack	2-1
	Preinstallation requirements	2-1
	To install the Service Pack.....	2-2
	Source codes of PMC Service Packs	2-4
	Derived-from VRC structure for Baan Dimensions 6.0 SP18 localizations	2-5
Chapter 3	Functional enhancements and important solutions.....	3-1
	General	3-1
	Cost Accounting.....	3-1
	Generic Dimension Process	3-2
	Purchase Control/Sales Control.....	3-2
	Transformation Order Control	3-3

About this Guide

This Installation and Deployment Guide describes the contents of Service Pack 18 and how to install Service Pack 18 on SSA Baan Dimensions 6.0. This document is intended for Baan IVc4 installers and system administrators.

This document includes the following chapters:

- Chapter 1, "Introduction," briefly describes Service Pack 18 for Baan Dimensions 6.0.
- Chapter 2, "To install the Service Pack," describes how to install Service Pack 18.
- Chapter 3, "Functional enhancements and important solutions," describes the most important functional enhancements and important solutions of Service Pack 18 for Baan Dimensions 6.0.

Send us your comments

We continually review and improve our documentation. Any remarks/requests for information concerning this document or topic are appreciated. Please e-mail your comments to documentation@ssaglobal.com.

In your e-mail message, refer to the document number and title. More specific information will enable us to process feedback efficiently.

Service Pack 18 is intended for users of Baan Dimensions 6.0 and can only be used to upgrade existing Baan Dimensions 6.0 installations.

Service Pack 18 contains:

- All Baan IV bug fixes from July 12, 2004, through November 16, 2004, that had to be built into the Baan Dimensions software.
- All Baan Dimensions bug fixes from July 31, 2004, through November 30, 2004.

You can install the Service Pack by means of the PMC tool on the following hardware platforms:

- UNIX
- Microsoft Windows

You can use the tool either to install individual solutions, which you can download from the SSA One Point Support (Baan) Web site, or to install Service Packs.

The following table shows for which extensions and languages the Service Pack is available:

Extension	Code	Dutch (1)	English (2)	German (3)	French (4)	Swedish (9)
Baan Dimensions 6.0 SP18	B40C_c4_m600	X	X	X	X	
Overlap Baan Dimensions 6.0 SP18 and Controlling (cnt0)	B40C_c4_mc06		X	X		
Overlap Baan Dimensions 6.0 SP18 and the French localization (fre0)	B40C_c4_mf06		X		X	
Overlap Baan Dimensions 6.0 SP18 and the Nordic localization (nc20)	B40C_c4_mn06		X			X

Translations for any other languages are only delivered upon request.

Contents

The Service Pack CD-ROM contains the following files:

- spb40c4_18m600
This PMC dump contains fixes for the Baan Dimensions 6.0 extension software and the new functionality for the extension software.
- spb40c4_18mc06
This PMC dump contains fixes for the overlap with the Controlling extension.
- spb40c4_18mf06
This PMC dump contains fixes for the overlap with the French localization.
- spb40c4_18mn06
This PMC dump contains fixes for the overlap with the Nordic localization.
- *Installation and Deployment Guide for Baan Dimensions 6.0 SP18* (U8739A US)
- Overview of solution numbers (solutions_sp18_m600.txt)
- Overview of customization parts (customization_parts_sp18_m600.txt)

Chapter 2

To install the Service Pack

2

Preinstallation requirements

Before you can install Service Pack 18, the following preinstallation requirements are applicable:

- spb40c4_18m600:
 - All Service Packs up to and including spb40c4_18stnd
 - All Service Packs up to and including spb40c4_17m600
- spb40c4_18mc06:
 - All Service Packs up to and including spb40c4_18stnd
 - All Service Packs up to and including spb40c4_18cnt0
 - All Service Packs up to and including spb40c4_18m600
 - All Service Packs up to and including spb40c4_17mc06
- spb40c4_18mf06:
 - All Service Packs up to and including spb40c4_18stnd
 - All Service Packs up to and including spb40c4_18fre0
 - All Service Packs up to and including spb40c4_18m600
 - All Service Packs up to and including spb40c4_17mf06

- spb40c4_18mn06:
 - All Service Packs up to and including spb40c4_18stdn
 - All Service Packs up to and including spb40c4_18nc20
 - All Service Packs up to and including spb40c4_18m600
 - All Service Packs up to and including spb40c4_17mn06

Ensure that sufficient free disk space is available. You must have at least 500 MB available to install the Service Pack. Note that the required space for the dimensions data depends on the database management system that you run.

Note: An actual backup of the \$BSE environment is available, as well as a backup of the actual data. If you do not have an actual backup, you must create a backup before you start the installation procedure.

To install the Service Pack

The process to install Service Pack 18 for Baan Dimensions 6.0 consists of the following general steps:

- 1 Copy and scan Service Pack 18.
- 2 Install Service Pack 18.

The following sections describe these steps in greater detail.

Copy and scan Service Pack 18

To copy and scan the Service Pack, take the following steps:

- 1 Copy the following files that correspond to the type of system on which you work:
 - **UNIX users**
Copy the files from the CD-ROM to a temporary directory on your local system. Use FTP to transfer the data from the temporary local directory to the Baan root directory, for example, \${BSE}/tmp/dumps.
 - **Windows NT users**
Copy the files from the CD-ROM to the tmp folder in the Baan root directory (\$BSE), for example: e:\baan\tmp\dumps.

- 2 Make sure that you install the components of Service Pack 18 in the same update VRCs that you use for Service Pack 17. If SSA Global alliances or customers want to upgrade customizations to the level of Service Pack 18, these users can install Service Pack 18 in a separate update VRC. To do so, SSA Global Alliances or Customers must create manually new Update VRCs in PMC, and install solution 73854 from the SSA One Point Support (Baan) Web site. Make sure to read the instructions of the solution. Note that you can no longer uninstall solutions. It is recommended that you not use solution 73854, if possible, and install the solutions in the same update VRC as Service Pack 17.
- 3 Scan the PMC dumps with the Scan Solution File (ttpmc2200m000) session. The PMC dumps that you must scan depend on the extensions that you use in your package combinations. You must always scan the PMC dump for the Baan Dimensions 6.0 SP18 extension software (spb40c4_18m600). In addition, you must scan one or more of the following PMC dumps:
 - For the overlap with Controlling: spb40c4_18mc06.
 - For the overlap with the French localization: spb40c4_18mf06.
 - For the overlap with the Nordic localization: spb40c4_18mn06.

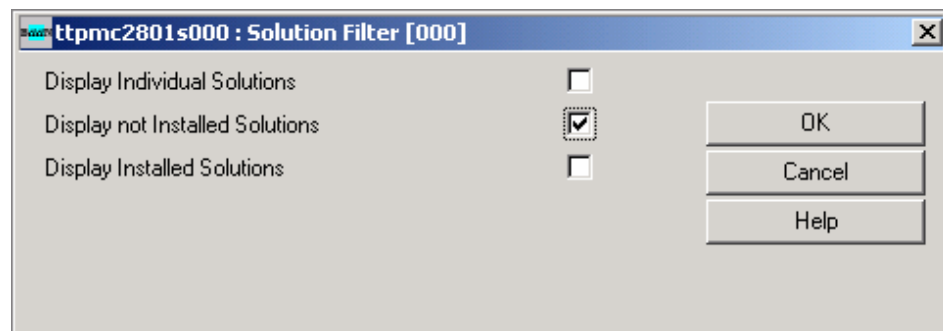
For more information, refer to “Derived-from VRC structure for Baan Dimensions 6.0 SP18 localizations,” later in this chapter.

Install Service Pack 18

To install the Service Pack 18, take the following steps:

- 1 Process in the Process Solutions (ttpmc2101m000) session the PMC dumps that you copied and scanned in the previous process.

Note: If you process the solution in the Process Solutions (ttpmc2101m000) session, click **Filter** and change the settings, as shown in the following figure. As a result, only the spb40c4_18m600 solutions appear.



- 2 Run the Create Runtime Data Dictionary (ttadv5210m000) session for the 40Ccm600 package combination and all derived package combinations.
- 3 Run the Create Runtime Data Dictionary (Forms and Menus) (ttadv5214m000) session for all the B40C_c4_m600 packages.
- 4 Run the Create Runtime Help (ttadv5230m000) session for all the B40C_c4_m600 packages.
- 5 Run the Create Tables (ttaad4230m000) session to create tables for all companies on B40C_c4_m600.

Source codes of PMC Service Packs






Solutions and Service Packs created by SSA Global and installed through the PMC tool have the source code of modified components included. However, the source codes of program scripts, libraries, and functions are only installed if a previous version of the source code of the component exists in the environment in which the solution or Service Pack is installed.

For example, if a fix is created for solution 71291 in the program script `tdilc4202`, the PMC dump for this solution contains the program script source and the program object. This solution is installed at system X in the update VRC `B40U_c4_stnd`. Before you install the program script source, the PMC tool checks whether the program script source exists in the update VRC, or in a VRC that is in the derived-from structure for the update VRC.

If the program script source of `tdilc4202` already exists, the new program script source and the program object are installed from the PMC dump of the solution. If the program script source is not found, only the program object is installed.

Before you begin the installation of a solution or Service Pack through PMC, SSA Global alliances or customers who need the source codes must make sure that the sources exist in the environment in which the solutions or Service Packs are installed.

Derived-from VRC structure for Baan Dimensions 6.0 SP18 localizations

Overlap with Controlling (cnt0) extension		
	B40_c4	
	B40U_c4_stnd	VRC for patches and solutions on Baan IVc4. Make sure that you installed Service Pack 18 in this VRC.
	B40L_c4_cnt0	
	B40U_c4_cnt0	VRC for patches and solutions on the Controlling (cnt0) extension. Make sure that you installed Service Pack 18 in this extension VRC.
	B40C_c4_m600	VRC that contains the initial Baan Dimensions 6.0 extension software, patches, and solutions. Make sure that you install Service Pack 18 (spb40c4_18m600) in this extension VRC.
	B40C_c4_mc06	VRC with overlap between Baan Dimensions 6.0 and the Controlling (cnt0) extension. In this overlap VRC, you must install the Service Pack 18 overlap (spb40c4_18mc06).

Overlap with French (fre0) localization

**B40_c4****B40U_c4_stnd**

VRC for patches and solutions on Baan IVc4. Make sure that you installed Service Pack 18 in this VRC.

**B40L_c4_fre0****B40U_c4_fre0**

VRC for patches and solutions on the French (fre0) localization. Make sure that you installed Service Pack 18 in this localization VRC.

**B40C_c4_m600**

VRC that contains the initial Baan Dimensions 6.0 extension software, patches, and solutions. Make sure that you install Service Pack 18 (spb40c4_18m600) in this extension VRC.

B40C_c4_mf06

VRC with overlap between Baan Dimensions 6.0 and the French (fre0) localization. In this overlap VRC you must install the Service Pack 18 overlap (spb40c4_18mf06).

Overlap with Nordic (nc20) localization



B40_c4



B40U_c4_stnd VRC for patches and solutions on Baan IVc4. Make sure that you installed Service Pack 18 in this VRC.



B40L_c4_nc20



B40U_c4_nc20 VRC for patches and solutions on the Nordic (nc20) localization. Make sure that you installed Service Pack 18 in this localization VRC.



B40C_c4_m600 VRC that contains the initial Baan Dimensions 6.0 extension software and patches as well as solutions. Make sure that you install Service Pack 18 (spb40c4_18m600) in this extension VRC.

B40C_c4_mn06 VRC with overlap between Baan Dimensions 6.0 and the Nordic (nc20) localization. In this overlap VRC you must install the Service Pack 18 overlap (spb40c4_18mn06).

Chapter 3

Functional enhancements and important solutions

3

This chapter describes the most important functional enhancements and important solutions for Service Pack 18. Some solutions can have an effect on the current way of working. The following points are noteworthy:

General

The new interface between Baan IV c4 and SSA Warehouse Management 4000 is not enabled for Baan IV c4 Dimensions 6.0. You cannot make a warehouse WMS controlled.

Cost Accounting

Solution 145899

Valuation controlled components are no longer skipped in the cost price calculation if you use the Print Multilevel Cost Price Calculation (ticpr2420m000) session.

Generic Dimension Process

Solution 147791

Planned RPL receipts in other warehouses are not longer taken into account if you check whether an ID number already has an inventory on order.

Solution 147877

If you create a back order line by means of the **Create Back** field, the main ID of the back order ID number is inherited from the original ID number.

Solution 148111

While processing ID numbers, the actual transaction date and transaction time are always used, even if you started the session on the previous day.

Purchase Control/Sales Control

Solution 145247

You cannot change the tax from **Yes** to **No** by means of the Correct Country and VAT Code Sales Order (tdsls4202m000) session if an application lock is present on a sales order.

Solutions 145687 and 145932

Using the dimension price control functionality, you can define prices and discounts on dimension level. As a result, not displaying purchase or sales contracts if no prices and discounts are found on contract line level or contract price/discount list level is not correct and has, therefore, been disabled.

Transformation Order Control

Solution 146117

If all TRO receipts for a TRO-SFC order have the same dimension set, the dimension set of the SFC order will be filled. As a result, BOM specifications defined by manufactured item, TRO type, and dimension set are taken into account.

