

Baan IVc4

**Installation and Deployment Guide -
Service Pack 13**

© 2003 Baan.

All rights reserved. No part of the material protected by this copyright may be reproduced or utilized in any form or by any means, electronic or mechanical, including photocopying, recording, broadcasting, or by any information storage and retrieval system, without permission in writing from Baan.

Baan assumes no liability for any damages incurred, directly or indirectly, from any errors, omissions or discrepancies between the software and the information contained in this document.

Document Information

Code:	U8209A US
Group:	User Documentation
Edition:	A
Date:	June, 2003

Table of contents

1	Introduction	1-1
	Contents	1-2
2	To install the Service Pack	2-1
	Preinstallation requirements	2-1
	To install the Service Pack	2-1
	Post-installation instructions	2-7
	Source codes of PMC Service Packs	2-8
3	Functional enhancements and important solutions	3-1
	Distribution: Linking relations to orders for commissions and rebates	3-2
	Distribution: Reuse lot numbers for rework production order	3-2
	Distribution: Display unprocessed but linked receipts	3-3
	Finance: New summary for Receivable Invoices report	3-3
	Finance: Archiving of Cost allocation	3-4
	Finance: Warning for manual payment on blocked invoice	3-4
	Finance: IBAN for Dutch and Norwegian Bank Files	3-5
	Finance: 1099- MISC reporting for USA	3-5
	Finance: FAS – GLD reconciliation	3-6
	Finance: Fixed Assets transaction report	3-6
	Finance: Close Periods	3-7
	Finance: Periodical Journal Report for multiple companies	3-7
	Finance: Maintain transaction schedules	3-8
	Enterprise Modeler: Show activities in Dynamic Menu Browser	3-8
	Enterprise Modeler: Change company in Dynamic Menu Browser	3-9
	Manufacturing: Print current standard prices	3-10
	Manufacturing: Calculate Sales Prices by Item	3-10
	Project: Adding sub-projects	3-11
	Transportation: New CMR for Belgium	3-12
	Service: Delete Periodic Maintenance Planning	3-12
	Tools: PMC Distributor	3-13
	Tools: Multilevel Download Tool for weekly collections	3-13
	Tools: PMC Cleanup functionality	3-14
	Tools: Copy Authorizations between users	3-15
	Tools: Reorganize tables	3-15
	Automotive (ags0/nas0) extension: Display Special Charges	3-16
	Automotive (ags0) extension: Pay on Consumption	3-16

Aerospace & Defense (and0) extension: Update Progress	
Percentages and Milestone Completions	3-18
Aerospace & Defense (and0) extension: Fee Withhold Calculations	3-18

About this document

This Installation and Deployment Guide describes the contents of Service Pack 13 and how to install Service Pack 13 on Baan IVc4. This document is intended for Baan IVc4 installers and system administrators.

This guide includes the following chapters:

- Chapter 1, “Introduction,” briefly describes Service Pack 13 for Baan IVc4.
- Chapter 2, “To install the Service Pack,” describes how to install Service Pack 13.
- Chapter 3, “Functional enhancements and important solutions,” describes the most important functional enhancements of Service Pack 13.

1 Introduction

Service Pack 13 for Baan IVc4 is intended for users of Baan IVc4.

You can use this Service Pack to upgrade existing installations.

Service Pack 13 contains all bug fixes up to March 3, 2003. In addition, Service Pack 13 contains a number of functional enhancements.

The Service Pack can be installed by means of the PMC tool on the following hardware platforms:

- UNIX
- Microsoft Windows

You can use the tool to install individual solutions, which you can download from the Baan Global Support Web site, or to install Service Packs.

The following table shows for which extensions and languages the Service Pack is available:

Extension	Code	Dutch = 1	English = 2	German = 3	French = 4
Standard Baan IVc4		X	X	X	X
Aerospace and Defense 2.2c	And0		X		
Baan Connect Kit 1.1 / 1.2 / 1.3	Bci0	X	X	X	X
Controlling	Cnt0	X	X	X	X
French localization	Fre0		X		X
Italian localization	Itl0		X		
Supply Chain – Italian localization	Its0		X		
Japanese localization	Jap0		X		
North American Automotive Solution	Nas0		X	X	X
Multicurrency	Mcr0		X		
Nordic localization	Nc20		X		
Netherlands localization	Nl10	X	X		
Supply Chain – Controlling	Scc1	X	X	X	X
Supply Chain	Sch1	X	X	X	X
iCRM integration	Crm0	X	X	X	X
Automotive Global Solution	Ags0	X	X	X	X

The availability of other languages will be published at a later stage on the Baan Support Web site. Availability of these translations is published under solution number 132938.

Contents

The Service Pack CD-ROM contains the following files and folders:

- B40c4_SP13 folder:
This folder contains all the files that are required to update the Baan IVc4 software. The folder contains the following files:
 - stb40c4_13stdn:
This file contains fixes for Tools.

- spb40c4_13std:
This file contains fixes for the standard application software.
- spb40c4_13and0:
This file contains fixes for the Aerospace and Defense 2.2c extension.
- spb40c4_13ags0:
This file contains fixes for the Automotive Global Solution extension.
- spb40c4_13bci0:
This file contains fixes for the Baan Connect Kit extension.
- spb40c4_13cnt0:
This file contains fixes for the Controlling extension.
- spb40c4_13crm0:
This file contains fixes for the iCRM integration extension.
- spb40c4_13fre0:
This file contains fixes for the French localization.
- spb40c4_13itl0:
This file contains fixes for the Italian localization.
- spb40c4_13its0:
This file contains fixes for the Supply Chain - Italian localization.
- spb40c4_13jap0:
This file contains fixes for the Japanese localization.
- spb40c4_13mcr0:
This file contains fixes for the Multicurrency extension.
- spb40c4_13nas0:
This file contains fixes for the North American Automotive Solution extension.
- spb40c4_13nc20:
This file contains fixes for the Nordic localization.
- spb40c4_13nl10:
This file contains fixes for the Dutch localization.
- spb40c4_13scc1:
This file contains fixes for the Supply Chain-Controlling extension.
- spb40c4_13sch0:
This file contains the first set of fixes for the Supply Chain extension.

- spb40c4_13sch1:

This file contains the second set of fixes for the Supply Chain extension.

- Documentation folder:

The documentation folder of the Service Pack CD-ROM contains the following documentation:

- *Installation and Deployment Guide - Service Pack 13* (U8209A US).
- Modified component and solved defect overviews, including the following:
 - Componentlist_XXXX.xls containing an overview of modified components.
 - Relnotes_XXXX.doc containing a textual description of solved defects.
 - Solutions_XXXX.txt containing an enumeration of BSS solution numbers included in the Service Pack.

These overviews are created for each of the products, either standard, localization, or extension, in which XXXX in the file name stands for the related localization or extension. You can find these overviews in subfolders XXXX, where XXXX in the subfolder name stands for the related localization or extension.

- VERSION.txt:

A text file that contains the identification of the CD-ROM.

2 To install the Service Pack

Preinstallation requirements

Before you can install Service Pack 13, you must have Service Pack 12 and earlier Service Packs for Baan IVc4 installed.

Before you install the Service Pack, you must first run the Convert to Runtime Data Dictionary (ttadv5215m000) session for the full range of package combinations, packages, and tables. Select all of the check boxes in this session.

To install the Service Pack

Before you install the Service Pack 13, first check if any last minute information is available about Service Pack 13 and the installation of this Service Pack. You can find this information on the Baan Global Support Web site under solution number 132937.

For the standard Baan IVc4 software, two dumps are created: one for Tools and one for the application. The Tools solutions are in a PMC dump called stb40c4_13std, whereas the application solutions are in a dump called spb40c4_13std. The reason for this is because the PMC dump for Tools must be scanned in the Base VRC for the standard software, but the components are actually installed in the unique tools VRC B40 c4. For Tools, you cannot have an Update VRC. Therefore, the Tools components are always imported in the unique Tools VRC B40 c4, which is the live VRC. You cannot have a test VRC for Tools.

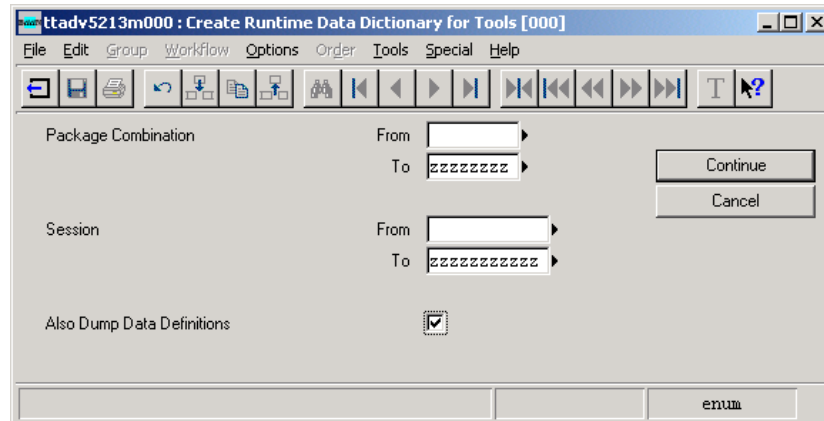
During the installation of the Service Pack, you can decide on the sequence of installing Tools and applications. You can first install the Tools dump and later on the application dumps, or first install the application dumps and later on the Tools dump. No dependency exists between these dumps. For best results, Baan recommends that you install the Tools dump first, and then install the Application dumps, however, the other way around is also possible.

For best results, install Tools and applications at the same time, however, if required, you can choose to install applications and Tools at separate times.

To install Service Pack 13 for Baan IVc4, take the following steps:

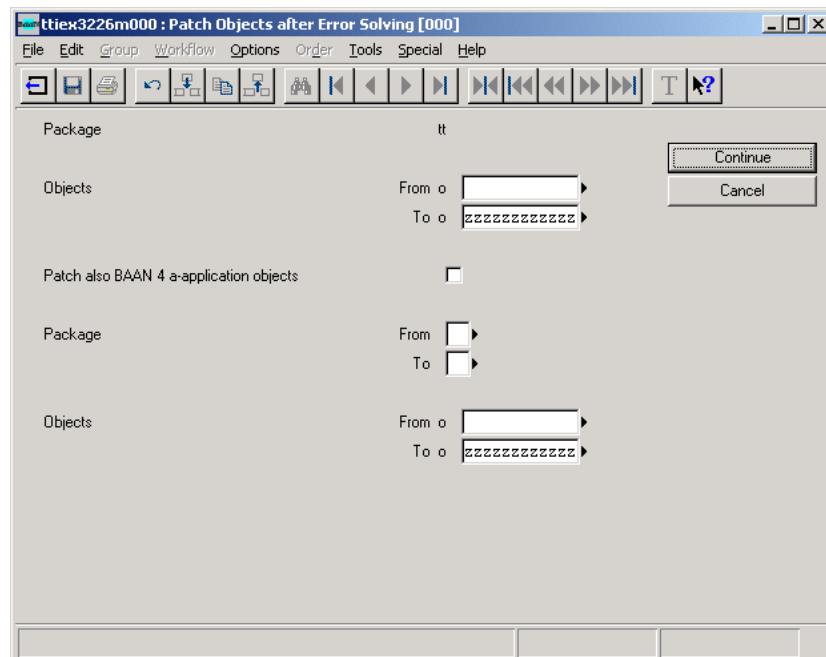
- 1 UNIX users must first copy files from the B40c4_SP13 folder of the CD-ROM to a temporary directory on the UNIX system. If you copy the files, you must use a transfer protocol in binary mode. The size of the dumps in this folder is approximately 596 MB. You do not need to transfer all files. In the following step, you can see which files are necessary for your software version.
- 2 Scan the PMC dumps. The PMC dumps that you must scan depend on the extensions that you use in your package combinations. You must always install the PMC dump for Tools (stb40c4_13std) and the PMC dump for the standard software (spb40c4_13std). In addition, you must scan one or more of the following PMC dumps:
 - For the Dutch localization: spb40c4_13nl10.
 - For the Japanese localization: spb40c4_13jap0.
 - For the French localization: spb40c4_13fre0.
 - For the Italian localization: spb40c4_13itl0.
 - For the Supply Chain-Italian localization: spb40c4_13sch0, spb40c4_13sch1, and spb40c4_13its0.
 - For the Nordic localization: spb40c4_13nc20.
 - For the Controlling extension: spb40c4_13cnt0.
 - For the Supply Chain extension: spb40c4_13sch0 and spb40c4_13sch1.
 - For the Supply Chain/Controlling extension: spb40c4_13cnt0, spb40c4_13sch0, spb40c4_13sch1, and spb40c4_13scc1.
 - For the Multicurrency extension: spb40c4_13mcr0.
 - For the Aerospace and Defense 2.2c extension: spb40c4_13and0.
 - For the North American Automotive Solution extension: spb40c4_13sch0, spb40c4_13sch1, and spb40c4_13nas0.
 - For the Baan Connect Kit extension: spb40c4_13bci0.
 - For the iCRM integration extension: spb40c4_13crm0.
 - For the Automotive Global Solution extension: spb40c4_13cnt0 and spb40c4_13ags0.

- 3 Run the Process Solutions (ttpmc2101m000) session to process the PMC dumps that you scanned in the previous step. This session consists of two parts: the Check Solution to Install (ttpmc2203s000) session and the Install Solution (ttpmc2205s000) session. In the Install Solution session, you must select the **Pre-Installation Instructions Followed Up** check box, otherwise, the Service Pack will not install.
- 4 Start the Create Runtime Data Dictionary for Tools (ttadv5213m000) session for all package combinations. Select the **Also Dump Data Definitions** check box, as shown in the following figure:

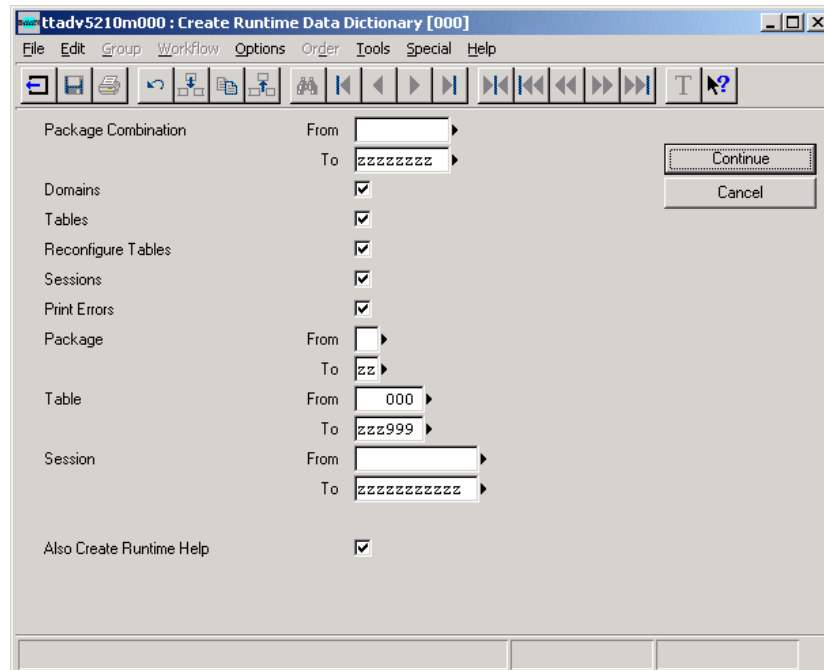


- 5 Exit the bshell. If Baan Tools components are loaded in shared memory, which is often the case on MS Windows systems, stop and restart the shared memory. Restart the bshell.

- 6 Start the Patch Objects after Error Solving (ttiex3226m000) session for all Baan Tools objects, as shown in the following figure:

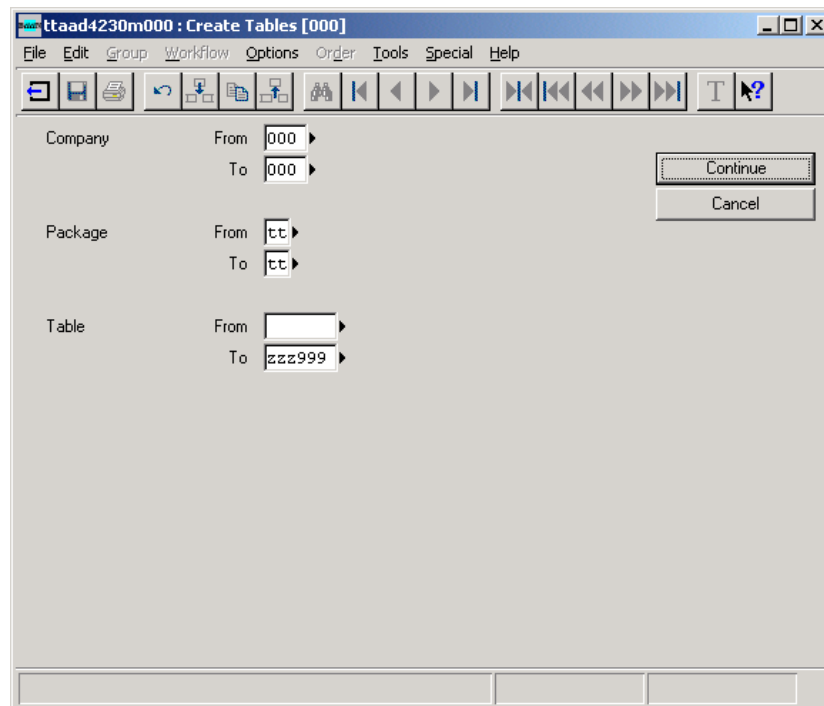


- 7 Start the Create Runtime Data Dictionary (ttadv5210m000) session for all package combinations. Select all of the check boxes in this session to reconfigure the tables, because some tables were modified for bug fixing.

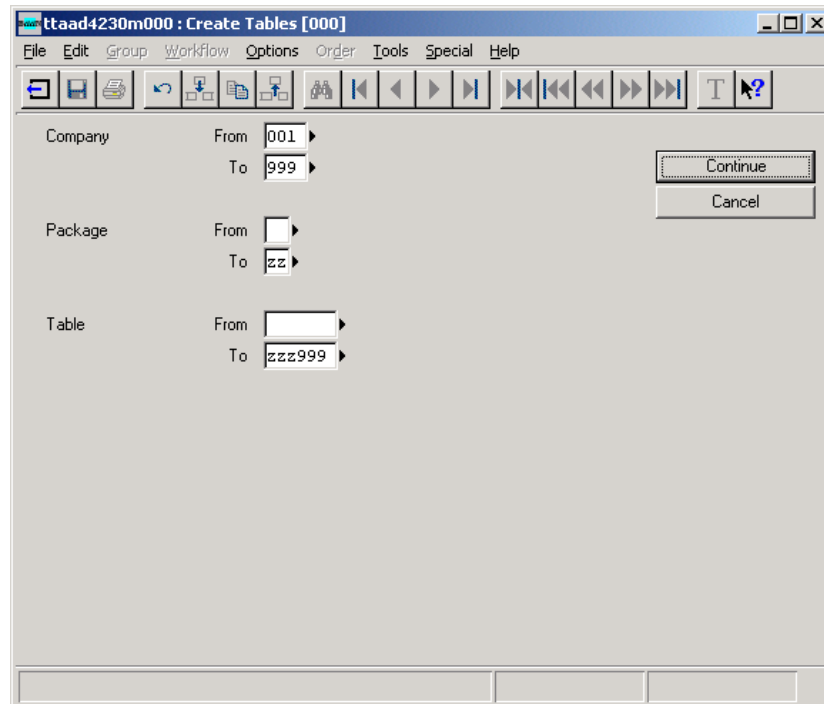


- 8 Exit and restart the bshell.

- 9 Start the Create Tables (ttaad4230m000) session to create the new tables for tools in company 000. The session then physically creates the new tools tables that were added to the Service Pack.



- 10 Start the Create Tables (ttaad4230m000) session to create the new tables for the applications. The session then physically creates the new application tables that were added to the Service Pack.



- 11 Exit and restart the bshell.

Post-installation instructions

After you install the Service Pack, take the following steps:

- 1 If solution 130368 was not yet installed before installing the Service Pack, you must run the Fill "Reference to Finalized Transactions" Table (tfcor1826m000) session. This session will create a new table tfgld126 and fill it with relevant data of the finalized transactions in Finance.
- 2 If you use Business Processes in the DEM module in combination with Worktop as a user interface, Worktop 2.2.27 or a newer version of Worktop must be installed. You can find the latest version of Worktop on the Baan Global Support Web site under solution number 13964.

- 3 If you want to use the changed functionality of the Reorganize Tables (ttaad4225m000) session as described in Chapter 3 of this document, you must have Porting Set 6.1c.06.07 or a later release of the Porting Set installed. The Porting Set is not included in the Service Pack, therefore, you must order the Porting Set separately, or download the Porting Set from solution 15219 on the Baan Global Support Web site.

Source codes of PMC Service Packs

Solutions and Service Packs created by Baan and installed through the PMC tool have the source code of modified components included. However, the source codes of program scripts, libraries, and functions are only installed if a previous version of the source code of the component exists in the environment in which the solution or Service Pack is installed.

For example, if a fix is produced for solution 71291 in the program script `tdilc4202`, the PMC dump for this solution contains the program script source and the program object. This solution is installed at system X in the update VRC `B40U_c4_std`. Before you install the program script source, the PMC tool checks whether the program script source exists in the update VRC, or in a VRC that is in the derived-from structure for the update VRC.

If the program script source of `tdilc4202` already exists, the new program script source and the program object are installed from the PMC dump of the solution. If the program script source is not found, only the program object is installed.

Before you begin the installation of a solution or Service Pack through PMC, Baan alliances or customers who need the source codes must make sure that the sources exist in the environment in which the solutions or Service Packs are installed.

3 Functional enhancements and important solutions

This chapter describes the most important functional enhancements and important solutions for Service Pack 13. The following enhancements and important solutions were introduced:

- Distribution: Linking relations to orders for commissions and rebates
- Distribution: Re-use lot numbers for rework production order
- Distribution: Display unprocessed but linked receipts
- Finance: New summary for Receivable Invoices report
- Finance: Archiving of Cost allocation
- Finance: Warning for manual payment on blocked invoice
- Finance: IBAN for Dutch and Norwegian Bank Files
- Finance: 1099- MISC reporting for USA
- Finance: IBAN for Finnish Bank Files
- Finance: FAS – GLD reconciliation
- Finance: Fixed Assets transaction report
- Finance: Close Periods
- Finance: Periodical Journal Report for multiple companies
- Finance: Maintain transaction schedules
- Enterprise Modeler: Show activities in Dynamic Menu Browser
- Enterprise Modeler: Change company in Dynamic Menu Browser
- Manufacturing: Print current standard prices
- Manufacturing: Calculate Sales Prices by Item
- Project: Adding subprojects
- Transportation: New CMR for Belgium
- Service: Delete Periodic Maintenance Planning
- Tools: PMC Distributor
- Tools: Multilevel Download Tool for weekly collections
- Tools: PMC Cleanup functionality
- Tools: Copy Authorizations between users
- Tools: Reorganize tables
- Automotive (ags0/nas0) extension: Display Special Charges
- Automotive (ags0) extension: Pay on Consumption
- Aerospace & Defense (and0) extension: Update Progress Percentages and Milestone Completions
- Aerospace & Defense (and0) extension: Fee Withhold Calculations

Distribution: Linking relations to orders for commissions and rebates

Short description of the enhancement

The original functionality, which automatically linked relations to an order or order line in the Maintain Relations by Order (tdcms0140s000) and the Maintain Relations by Order Line (tdcms0141s000) sessions, caused confusion. This functionality has been disabled. Now, regardless of parameter settings, relations must be linked manually.

A new option is introduced which enables relations to be automatically linked again. In the GUI, this option is available as a button labeled **Link Relations**. In ASCII, the option can be accessed by pressing CTRL+ A. In addition, it is available in the session's **Options** menu ESC+O.

If you click **Link Relations**, a link will to the proper default relation will be generated.

New or changed software components

For a detailed overview of new or changed software components, refer to solution 160142 in the document componentlist_std.

Customer implication

This solution affects the linking of relations to sales orders or sales order lines. The relations must now be linked as described earlier.

Distribution: Reuse lot numbers for rework production order

Short description of the enhancement

For rework production orders, it was not possible to make a receipt in the Maintain Receipts (ILC) (tdilc4113s000) session under the same lot ID if the item was lot controlled by unit. The system would give the message "Lot already used".

Now, for rework production orders, it is possible to make the receipt under the same lot ID, even if the item is lot controlled by unit. Only the lot on-hand will increase, not the lot-size, which remains the same.

New or changed software components

For a detailed overview of new or changed software components, refer to solution 161334 in the document componentlist_std.

Customer implication

You can start using this enhancement immediately.

Distribution: Display unprocessed but linked receipts**Short description of the enhancement**

If the **Maintain Receipts by Receipt/Order Number** purchase order parameter was set to **Receipt Number** and a new receipt was linked to a purchase order in the Maintain Receipts (tdpur4120m000) session but the receipt was not processed, it was difficult to find the receipt number to which the order is linked.

Now, a new session, Display Unprocessed Linked Receipts (tdpur4536s000), is created to display the orders that are linked to receipts and that are not processed. This session can be accessed from the Select Receipts (tdpur4131s000) session from the **Specific** menu, CTRL+E. For a detailed description of this enhancement, refer to solution 160731 in the document relnotes_std.

New or changed software components

For a detailed overview of new or changed software components, refer to solution 160731 in the document componentlist_std.

Customer implication

You can start using this enhancement immediately.

Finance: New summary for Receivable Invoices report**Short description of the enhancement**

To print the totals per logistic company, a new report is added to the Print Receivable Invoices up to Period (tfacp1439m000) session.

New or changed software components

For a detailed overview of new or changed software components, refer to solution 129402 in the document componentlist_std.

Customer implication

You can start using this enhancement immediately.

Finance: Archiving of Cost allocation

Short description of the enhancement

A new session, Archiving of Cost allocation (tfcsl1206m000), is added to archive/purge cost allocation data.

New or changed software components

For a detailed overview of new or changed software components, refer to solution 129007 in the document componentlist_std.

Customer implication

You can start using this enhancement immediately.

Finance: Warning for manual payment on blocked invoice

Short description of the enhancement

During the registration of a payment within the Maintain Bank Transaction (tfcmg2100s000) session or the Assign Unallocated/Advance payment to invoices (tfcmg2106s000) session, a warning message will appear when a blocking code is present on the purchase invoice. This is useful information for the Administrator in case the purchase invoice is not paid through the payment procedure within Baan but collected by the supplier.

New or changed software components

For a detailed overview of new or changed software components, refer to solution 130323 in the document componentlist_std.

Customer implication

The warning message will appear each time when a payment is registered for a blocked purchase invoice.

Finance: IBAN for Dutch and Norwegian Bank Files**Short description of the enhancement**

For Dutch bank file BTL91 ABN AMRO and for Norwegian bank file BETFOR (Nordic localization), IBAN payments were not supported yet in the Transfer Payments (tfcmg1260s000) session. The report layout for these bank files is enhanced so that IBAN payments are now supported.

New or changed software components

For a detailed overview of new or changed software components, refer to solution 131297 in the document componentlist_std and 131443 in the document componentlist_nc20.

Customer implication

To activate the new functionality, you can select the **Use IBAN Account** parameter for the related payment method in the Maintain Payment Methods (tfcmg0140m000) session.

Finance: 1099- MISC reporting for USA**Short description of the enhancement**

The 1099-MISC requirements per U.S. IRS tax publication 1220 for year 2002 have been implemented. For a detailed description of this enhancement, refer to solution 158774 in the document relnotes_std.

New or changed software components

For a detailed overview of new or changed software components, refer to solution 158774 in the document componentlist_std.

Customer implication

You can start using this enhancement immediately. This functionality is specifically designed for users in the USA.

Finance: FAS – GLD reconciliation

Short description of the enhancement

The Print Fixed Assets - General Ledger Reconciliation (tffas0442m000) session was printing the value of "Accumulated Depreciation" on the report for disposed assets. This caused the report total to be out of balance with the general ledger. Now, a new option is provided on the form to avoid printing the accumulated depreciation for a disposed asset.

New or changed software components

For a detailed overview of new or changed software components, refer to solution 129929 in the document componentlist_std.

Customer implication

You can start using this enhancement immediately.

Finance: Fixed Assets transaction report

Short description of the enhancement

If an asset is disposed, the Print Detailed Scheme of Fixed Asset Transactions (tffas0441m000) session did not show the reversal on the investment account and on the accumulated depreciation account asset wise. Now, a report, Investment Account, is added to the session. If an asset is disposed, this prints the reversal of the purchase amount and the revaluation amount in the disposal amount column. Another report, Accumulated Depreciation Account, is added to the session that prints the reversal of the accumulated depreciation amount in the disposal amount column if an asset is disposed.

New or changed software components

For a detailed overview of new or changed software components, refer to solution 131654 in the document componentlist_std.

Customer implication

You can start using this enhancement immediately.

Finance: Close Periods**Short description of the enhancement**

If an error was found during the process of period closing in the Close Periods (tfgld1206m000) session, a corresponding error message appeared and the process was stopped. It was impossible to get a full list of errors to fix them at once. Now, a new mode is added to satisfy the need to know all errors that prevent the period from being closed. In this mode, all errors are printed on the report. A new form field, Print all errors, is added to switch between the modes. If this field is set to **NO**, then as soon as an error is detected, the error message will be shown and the next period will be processed. If the value of the **Print all errors** field is **YES**, then all errors will be printed on the report. If no errors are found, the period will be closed.

New or changed software components

For a detailed overview of new or changed software components, refer to solution 159448 in the document componentlist_std.

Customer implication

You can start using this enhancement immediately.

Finance: Periodical Journal Report for multiple companies**Short description of the enhancement**

The Print Periodic Journal Report (tfgld1411m000) session can now, with the new **Print All Companies** option, print the Journal Report either for the current company or for all companies belonging to the same finance group. The reports print the finance company number on the detail line.

New or changed software components

For a detailed overview of new or changed software components, refer to solution 160271 in the document componentlist_std.

Customer implication

You can start using this enhancement immediately.

Finance: Maintain transaction schedules

Short description of the enhancement

When entering a new line to an existing transaction schedule in the Maintain Transaction Schedule Details (tfgld0113s000) session, it was only possible to enter this line at the end of the schedule. If you wanted to add a new line in the middle of an existing schedule, you had to delete all the lines they wanted after the new line, insert the new line, and re-enter all the data they just deleted. The current solution enables the user to change the line number when entering a transaction schedule. By doing so, you can leave open line numbers within the schedule which can then be used to add more details at a later date without having to delete and re-enter data.

New or changed software components

For a detailed overview of new or changed software components, refer to solution 160513 in the document componentlist_std.

Customer implication

You can start using this enhancement immediately.

Enterprise Modeler: Show activities in Dynamic Menu Browser

Short description of the enhancement

There was a problem in the Dynamic Menu Browser (DMB). When a role was linked to a business process, and the role was changed for one activity in a sub-business process, the activity did not show up in the DMB. This happened only, when, on the **View** menu, the **Main Business Processes** was selected.

To fix this, solution 117155 was built to show every activity in a Business Process, which is a link to another Business Process in the DMB. That way, the activities with changed authorization would no longer be missed. The result was more entries of type Business Processes in the DMB tree.

With this solution, a new **View** menu command is introduced in the DMB. The new **View** menu command, **Show excluded sub Business Processes**, is located below the **Main Business Processes** command.

When this option is selected, the tree in the DMB will appear as before the implementation of solution 117155. When this option not selected, then sub-business processes to which a role is linked with the excluded property, will not be shown in the tree in the DMB.

As a result, the activities in the sub-business processes of the excluded business processes for which the authorization was changed, will no longer appear in the DMB tree. Consequently, the end-user can no longer activate them from the DMB.

New or changed software components

For a detailed overview of new or changed software components, refer to solution 130422 in the document componentlist_std.

Customer implication

You can start using this enhancement immediately.

Enterprise Modeler: Change company in Dynamic Menu Browser

Short description of the enhancement

In the Dynamic Menu Browser (DMB), if the **Change Company** command was used, a new DMB was started. At that moment, two DMBs would exist and the old DMB had to be closed in a separate action.

Under the **Change Company** command, a new menu command, **Change Company AND close browser**, is added. When this option is used, a new DMB is started and the old DMB is closed automatically.

New or changed software components

For a detailed overview of new or changed software components, refer to solution 130874 in the document componentlist_std.

Customer implication

You can start using this enhancement immediately.

Manufacturing: Print current standard prices

Short description of the enhancement

When the user wanted to print the standard cost price of items in the Print Standard Cost Prices by Item (ticpr3401m000) session for a given range of effective dates, the system printed all the standard cost price records that exist in that range of dates. Sometimes, user only requires the current standard cost price of items in a given range.

A **Print Latest Price Only** check box is added to the session. If this check box is **NO**, the system prints all standard cost prices of the items in the given range of effective dates. If this check box is **YES**, the system only prints current standard cost price of items, irrespective of effective dates.

New or changed software components

For a detailed overview of new or changed software components, refer to solution 131530 in the document componentlist_std.

Customer implication

You can start using this enhancement immediately.

Manufacturing: Calculate Sales Prices by Item

Short description of the enhancement

There was no option to calculate cost prices of the item while running the Calculate Sales Prices by Item (ticpr2250m000) session in job mode. While calculating sales price of the item in normal mode, you can calculate cost prices of the item by answering the question **Perform cost price calculation**. If the answer is **YES**, the system calculates the cost prices of the items. If the answer is **NO**, the system does not calculate the cost prices. However, the user had no option to do the same in the job mode.

A new command, **Calculate Cost Prices**, is added. While running the Calculate Sales Prices by Item (ticpr2250m000) session, if **Calculate Cost Prices** is **YES**, you can calculate the cost prices of items both in normal and in job mode. In job mode, the system calculates the cost prices based on the user specified option YES/NO for **Calculate Cost Prices**. In addition, in normal mode, if the option for **Calculate Cost Prices** is **NO** and the answer to **Perform cost price calculation** is **YES**, the system also calculates the cost prices of the item; otherwise, the cost prices of the items are not calculated.

New or changed software components

For a detailed overview of new or changed software components, refer to solution 131855 in the document componentlist_std.

Customer implication

You can start using this enhancement immediately.

Project: Adding sub-projects

Short description of the enhancement

When linking a sub-project to a main-project in the Maintain Projects (tppdm6100m000) session, you should be prompted to copy the customer data from the main project. Now, the question appears when a sub-project is linked to a main project.

New or changed software components

For a detailed overview of new or changed software components, refer to solution 130044 in the document componentlist_std.

Customer implication

You can start using this enhancement immediately.

Transportation: New CMR for Belgium

Short description of the enhancement

A new layout is created especially for the Belgium International Bill of Lading (CMR Document). This report is included in the Print International Bills of Lading (trtod1440m000) session and in the Print Warehousing Freight documents (trtod2430m000) session. No specific Belgium localization is developed for this.

When users are printing a CMR, they can choose between the Belgian version and the standard international version. The Belgian version should only be used by companies located in Belgium.

New or changed software components

For a detailed overview of new or changed software components, refer to solutions 130459 and 131486 in the document componentlist_std.

Customer implication

You can start using this enhancement immediately. This functionality is specifically designed for users in Belgium.

Service: Delete Periodic Maintenance Planning

Short description of the enhancement

A new session, Delete Periodic Maintenance Planning (tssma1225m000), is created in order to delete periodic maintenance planning globally. This session is available in the Periodic Maintenance (mtssma01050001) menu. For a detailed explanation of this new session, refer to solution 129665 in the document relnotes_std.

New or changed software components

For a detailed overview of new or changed software components, refer to solution 129665 in the document componentlist_std.

Customer implication

You can start using this enhancement immediately.

Tools: PMC Distributor

Short description of the enhancement

To add components to a PMC solution can be a lot of typing work. This typing work can be automated when all components or ranges of components of a VRC should be connected to a PMC solution. In addition, a set of components can be known already somewhere in the system, like Customization Administration, another solution, etc.

The new Connect Components to PMC Solution (tppmc1221m000) session offers new functionality for distributors of PMC solutions. This session builds a new PMC solution from a list of components somewhere present in the system. For a detailed explanation of this new session, refer to solution 126272 in the document relnotes_tools.

New or changed software components

For a detailed overview of new or changed software components, refer to solution 126272 in the document componentlist_tools.

Customer implication

You can start using this enhancement immediately. This functionality is specifically designed for customization alliances and other companies who want to create PMC solutions.

Tools: Multilevel Download Tool for weekly collections

Short description of the enhancement

The Download, Scan and Connect Solution (Multi-Level) (tppmc2210m000) session can be used to download dumps from the Baan FTP-server. However, if you try this for weekly collections, the message "Downloaded file corrupt" was printed on the report.

The Multi-Level Download Tool (MLDT) has been changed. As a result, the weekly collections can also be downloaded and scanned.

Note that the MLDT will not automatically download the dependent solutions of the individual solutions that are in the weekly collections.

New or changed software components

For a detailed overview of new or changed software components, refer to solution 131307 in the document componentlist_tools.

Customer implication

You can start using this enhancement immediately.

Tools: PMC Cleanup functionality

Short description of the enhancement

When you are working with PMC for a longer period, you will experience an increased usage of disk space. The dumps of individual solutions and uninstall dumps are kept on the system, and PMC offered no possibility to delete these dumps in a controlled way. Moreover, it is not easy to remove a complete Update VRC when it is no longer required.

This solution offers new functionality in PMC to clean up your environment through the PMC Cleanup (tpmc2220m000) session. This includes deleting:

- Solution dumps;
- Uninstall dumps;
- PMC registry.

For solution dumps and uninstall dumps, you can select on installation date. It is also possible to specify a Service Pack up to which all dumps can be deleted.

Deleting the PMC Registry is only meant for if you want to remove a complete Update VRC. For the procedure to delete a complete Update VRC, refer to the online Help that comes with this session.

New or changed software components

For a detailed overview of new or changed software components, refer to solution 131727 in the document componentlist_tools.

Customer implication

You can start using this enhancement immediately.

Tools: Copy Authorizations between users

Short description of the enhancement

The append function has been added to the Copy Authorizations Between Users (ttaad2240m000) session. With this new function, authorizations of one user can be added to the existing authorizations of another user.

New or changed software components

For a detailed overview of new or changed software components, refer to solution 130557 in the document componentlist_tools.

Customer implication

You can start using this enhancement immediately.

Tools: Reorganize tables

Short description of the enhancement

The functionality of the Reorganize Tables (ttaad4225m000) session (and the bdbreconfig binary that is activated from this session) is changed. Now, the session will no longer stop as soon as an error has occurred. It will reconfigure as many tables as possible, and list the errors at the end.

To handle this changed functionality correctly, the tools sessions that use bdbreconfig are also modified. However, the tools sessions will still work correctly with the binary bdbreconfig from older porting sets.

New or changed software components

For a detailed overview of new or changed software components, refer to solution 131811 in the document componentlist_tools.

Customer implication

The enhanced functionality will automatically be activated when Porting Set 6.1c.06.07 or a later release of the Porting Set is installed.

Automotive (ags0/nas0) extension: Display Special Charges

Short description of the enhancement

There was no option to display special charges. The only way to view the special charges was through the maintain session. Many companies restrict access to the Maintain Default Special Charges (tdssc9100s000) session; yet, many employees may need to view this data. Consequently, a new session to display the special charges was required.

A new session, Display Special Charges (tdssc9500s000), is created; this session can be accessed from the Display Sales Contracts (tdssc0501m000) session.

New or changed software components

For a detailed overview of new or changed software components, refer to solution 161138 in the document componentlist_ags0 or document componentlist_nas0.

Customer implication

You can start using this enhancement immediately.

Automotive (ags0) extension: Pay on Consumption

Short description of the enhancement

When a customer sends a schedule to the supplier, it was assumed that the transmitted synchronization cum (cum received) does not contain the consignment stock of the DC warehouse. However, in practice, there are business cases where the transmitted synchronization cum does consider the consignment stock. Consequently, the outstanding quantity (what must be still delivered) had to be calculated differently.

A solution that supports both approaches (cum with/without consignment stock) was required.

A new parameter, **Enable Pay on Consumption**, is introduced to the SSC Parameters.

If a customer performs "Pay on Consumption", this parameter must be set to **Yes**.

This parameter controls the calculation and update of the outstanding quantities in a planning and delivery process using an ELP or a DC. It has no effect if neither an ELP nor a DC is employed.

No

"Pay on Consumption" is NOT supported.

The outstanding quantities of a schedule represent the quantities still to be delivered to the customer (the ELP/DC stock is not considered when the outstanding quantities of a new schedule are calculated).

As a result:

- MPS subtracts the ELP/DC stock from the outstanding quantities.
- Delivery Generation subtracts the ELP/DC stock from the outstanding quantities.

Yes

"Pay on Consumption" is supported

The outstanding quantities of a schedule represent the quantities still to be delivered to the ELP/DC (the ELP/DC stock is considered when the outstanding quantities of a new schedule are calculated).

As a result:

- MPS only calculates based on outstanding quantities
- Delivery Generation only calculates based on outstanding quantities

Users who want to keep the old representation (until Baan IVc4 ags0 SP10) of outstanding quantities of schedules in an ELP/DC-process must set the parameter to **No**.

New or changed software components

For a detailed overview of new or changed software components, refer to solution 131661 in the document componentlist_ags0.

Customer implication

To activate the new functionality, you can select the **Enable Pay on Consumption** parameter in the Maintain SSC Parameters (tdssc0195m000) session.

Aerospace & Defense (and0) extension: Update Progress Percentages and Milestone Completions

Short description of the enhancement

Adding the **project status** to the selection criteria in the Update Progress Percentages and Milestone Completions (tipgc1201m00b) session was intended to enhance performance by limiting the project range.

New or changed software components

For a detailed overview of new or changed software components, refer to solution 160349 in the document componentlist_and0.

Customer implication

You can start using this enhancement immediately.

Aerospace & Defense (and0) extension: Fee Withhold Calculations

Short description of the enhancement

For cost reimbursable contracts where the **Public Voucher by CLIN** is **Yes**, the Fee Withhold shall be calculated and posted for every CLIN separately. For a detailed description of this enhancement, refer to solution 160870 in the document relnotes_and0.

New or changed software components

For a detailed overview of new or changed software components, refer to solution 160870 in the document componentlist_and0.

Customer implication

You can start using this enhancement immediately.