



## ▶▶ SSA® Baan IV / Triton 3

Technical Notes Porting Set  
6.1c.07.11

## © Copyright 2006 by SSA Global Technologies, Inc. and its Subsidiaries and Affiliates

All rights reserved. No part of this publication may be reproduced, stored in a retrieval system, or transmitted in any way or by any means, including, without limitation, photocopying or recording, without the prior written consent of SSA Global Technologies™, Inc.

### Important Notices

The material contained in this publication (including any supplementary information) constitutes and contains confidential and proprietary information of SSA Global Technologies, Inc. or its Subsidiaries and Affiliates.

By gaining access to the attached, you acknowledge and agree that the material (including any modification, translation or adaptation of the material) and all copyright, trade secrets and all other right, title and interest therein, are the sole property of SSA Global Technologies, Inc. and/or its Subsidiaries and Affiliates and that you shall not gain right, title or interest in the material (including any modification, translation or adaptation of the material) by virtue of your review thereof other than the non-exclusive right to use the material solely in connection with and the furtherance of your license and use of software made available to your company from SSA Global Technologies, Inc. or its Subsidiaries and Affiliates (as applicable) pursuant to a separate agreement ("Purpose").

In addition, by accessing the enclosed material, you acknowledge and agree that you are required to maintain such material in strict confidence and that your use of such material is limited to the Purpose described above.

Although SSA Global Technologies, Inc. and/or its Subsidiaries and Affiliates has taken due care to ensure that the material included in this publication is accurate and complete, neither SSA Global Technologies, Inc. or its Subsidiaries or Affiliates can warrant that the information contained in this publication is complete, does not contain typographical or other errors, or will meet your specific requirements. As such, neither SSA Global Technologies, Inc. or its Subsidiaries or Affiliates assumes and hereby disclaims all liability, consequential or otherwise, for any loss or damage to any person or entity which is caused by or relates to errors or omissions in this publication (including any supplementary information), whether such errors or omissions result from negligence, accident or any other cause.

### Trademark Acknowledgements

SSA, SSA Global and SSA Global Technologies are trademarks or registered trademarks of SSA Global Technologies, Inc. in the United States and/or other countries.

Baan is a trademark of SSA Global Technologies, Inc. in the United States and/or other countries.

IBM, DB2, DB2 Universal Database, OS/2, Parallel Sysplex, MVS/ESA, AIX, S/390, AS/400, OS/390, OS/400, iSeries, pSeries, xSeries, zSeries, z/OS, AFP, Intelligent Miner, WebSphere, Netfinity, Tivoli, Informix and Informix Dynamic Server are trademarks or registered trademarks of IBM Corporation in USA and/or other countries.

Microsoft WINDOWS, NT, Word, and SQL Server are registered trademarks of Microsoft Corporation.

All other company, product, trade or service names referenced may be registered trademarks or trademarks of their respective owners.

### Publication Information

**Document code** : U9024A US  
**Release** : SSA® Baan IV / Triton 3  
**Document title** : Technical Notes Porting Set 6.1c.07.11  
**Publication date** : May 06

# Table of Contents

<b>Chapter 1</b>	<b>Introduction.....</b>	<b>1-1</b>
	End-of-service notifications .....	1-1
	Hardware support .....	1-2
	Installation notes .....	1-2
<b>Chapter 2</b>	<b>Operating System Notes .....</b>	<b>2-1</b>
	HP PA-RISC HP-UX .....	2-1
	HP IA64 HP-UX .....	2-2
	IBM Power_PC AIX.....	2-4
	Sun Sparc Solaris / Fujitsu Siemens Sparc Solaris .....	2-5
	Microsoft x86 Windows .....	2-6
	Linux x86 Suse .....	2-8
	HP Alpha Tru64 .....	2-10
	Fujitsu Siemens Mips Reliant UNIX .....	2-11
<b>Chapter 3</b>	<b>RDBMS Notes .....</b>	<b>3-1</b>
	IBM DB2 .....	3-1
	IBM Informix.....	3-1
	Microsoft SQL Server.....	3-2
	Oracle .....	3-3
<b>Chapter 4</b>	<b>Java Notes.....</b>	<b>4-1</b>
	Java options.....	4-1

Supported Java versions .....	4-1
<b>Chapter 5      New features .....</b>	<b>5-1</b>
6.1c.07.10 features .....	5-1
<b>Chapter 6      Known issues / Points of attention .....</b>	<b>6-1</b>
Oracle 10.2 .....	6-1
To upgrade from a porting set before 6.1c.07.08 [Oracle with Solaris/Tru64/HP-UX PA-RISC] ..	6-1
InstallShield-based BW removed, since 6.1c.07.08 .....	6-2
Microsoft JVM, upgrade before 6.1c.07.08 .....	6-2
Recreate shm_values, upgrade before 6.1c.07.07 .....	6-3
Range expression validation .....	6-3
HP-UX: hostname length limited to max 20 characters .....	6-4
Oracle 9.2.0.6 and 10.1.0.4 .....	6-4
RosettaNet Enabling Kit, Windows-only issue .....	6-4
Oracle 7 driver .....	6-5
<b>Chapter 7      Deprecation Notes .....</b>	<b>7-1</b>
bdbpre/ bdbpost option -q .....	7-1

## About this Guide

This document provides Technical Notes to inform you about the porting set 6.1c.07.11.

### **Send us your comments**

We continually review and improve our documentation. Any remarks/requests for information concerning this document or topic are appreciated. Please e-mail your comments to [documentation@ssaglobal.com](mailto:documentation@ssaglobal.com).

In your e-mail, refer to the document number and title. More specific information will enable us to process feedback efficiently.



For last-minute notes in regard to this porting set, check solution 15219 at the SSA Global OnePoint Support site:

<http://www.ssaglobal.com/services/support/online.aspx>

## End-of-service notifications

The support described in these notes is restricted by the support provided by the actual vendor.

**Example:** SSA Global will provide support for Microsoft Windows 2003 on this porting set as long as Microsoft provides standard support for Windows 2003.

### Java

Most vendors have ended support for Java 1.3 by March 2006. Customers are advised to plan migration to at least 1.4.2.

### IBM AIX

IBM has withdrawn support for AIX 5L 5.1 April 1, 2006. Customers are advised to plan migration to a later version.

## Hardware support

SSA ERP LN solutions, including SSA Baan IV, are supported on Intel and AMD-based x86, AMD64, and EM64T under the following conditions:

- The operating system must be an SSA ERP LN supported platform.

**Note:** Currently SSA Global supports the 32-bit variants of Windows. For Linux RedHat and Suse both 32 and 64 bit are supported. Be aware that SSA Baan ERP 5.0c is a 32-bit application and therefore needs the 32-bit clients of the selected database.

- The operating system vendor must support the hardware.

**Note:** Make sure other required software, such as the RDBMS, is supported on the platform of your choice as well.

For Windows, check the Microsoft HCL list:

<http://www.microsoft.com/whdc/hcl/default.mspix>

For Suse Linux, check Novell's hardware requirements:

<http://www.novell.com/products/linuxenterpriseserver/sysreqs.html>

**Note:** SSA Global cannot guarantee that the information will be available on the provided links. These links are provided merely for your convenience.

## Installation notes

### Update Windows porting set

For the installation Guide for the porting set on a Windows platform, check solution 125018 at the SSA Global OnePoint Support site:

<http://www.ssaglobal.com/services/support/online.aspx>



Some Porting sets require minimum runtime patches for the OS compiler. Solution 205538 provides basic information on what your current runtime patch level is.

## HP PA-RISC HP-UX

Supported:

- HP-UX 11i v1, v2 : 11.00, 11.11, 11.23

Supported databases:

- Oracle 9.2, 10.1, 10.2
- Informix: 7.31, 9.40, 10
- Bisam 2.1

## Required OS patches

6.1c.07.09 was the first porting set built based on HP aC++ A03.63. Be sure to install, at a minimum, the runtime patches for compiler version A03.63 for HP aC++. See the following link:

[http://h21007.www2.hp.com/dspp/tech/tech\\_TechSoftwareDetailPage\\_IDX/1,1703,1743,00.html](http://h21007.www2.hp.com/dspp/tech/tech_TechSoftwareDetailPage_IDX/1,1703,1743,00.html)

If you use the Java interface, for example, when you use SSA Technical Architecture, check the following link for patches:

<http://www.hp.com/products1/unix/java/patches/index.html>

## Java 1.4 and Java 1.5 support

To enable java 1.4:

- 1 Make sure the LD\_PRELOAD is set. Take the following steps:
  - a Create a script with the following content:
 

```
#!/bin/ksh

Export LD_PRELOAD=/opt/java1.4/jre/lib/PA_RISC2.0/hotspot/libjvm.sl
$BSE/bin/bshell6.1 "$@"
```
  - b Create a new bshell entry in the \$BSE/lib/ipc\_info like bshell\_j14 that points to the script.
 

Simply copy the bshell entry and change the entries. For example:

```
bshell_j14    s    0    0    p    ${BSE}/bin/bshell_j14
```
  - c Make sure the bshell name in the BW configuration is: bshell\_j14.
- 2 Make sure the file \${BSE}/java/jvm\_options exists and contains: -Xusealtsigs
- 3 Make sure the SHLIB\_PATH in \${BSE}/lib/bse\_vars points to the Java 1.4 libraries:
 

```
SHLIB_PATH=/opt/java1.4/jre/lib/PA_RISC2.0:/opt/java1.4/jre/lib/PA_RISC2.0/hotspot:/opt/java1.4/jre/lib/PA_RISC2.0/native_threads
```

To enable java 1.5, a similar procedure is needed as for java 1.4.

## HP IA64 HP-UX

Supported:

- HP-UX 11.23

Supported databases:

- Oracle 9.2, 10.1, 10.2 (level 2 only)

- Informix: 10 (level 2 only)

Usage of this porting set requires a license key. Solution 146337 provides a correction program to add the related commercial function.

*If you move an existing SSA Triton3/Baan IV environment from another OS to HP Itanium:*

Be sure to install solution 146337 and run the correction program *before* you move the BSE environment, because you cannot perform subsequent installation due to the required license-key.

## Required OS patches

6.1c.07.10 was the first porting set built based on HP aC++ A6.06. Be sure to install as a minimum the runtime patches for compiler version A6.06 for HP aC++.

[http://h21007.www2.hp.com/dspp/tech/tech\\_TechSoftwareDetailPage\\_IDX/1,1703,1743,00.html](http://h21007.www2.hp.com/dspp/tech/tech_TechSoftwareDetailPage_IDX/1,1703,1743,00.html)

In addition, SSA Global recommends that you install the core patches distributed on the extension software media.

If you use the Java interface, for example, when you use SSA Technical Architecture, check the following link for patches:

<http://www.hp.com/products1/unix/java/patches/index.html>

## Java support

To enable java 1.3:

- 1 Add to the file \$BSE/java/jvm\_options:  
Djava.library.path=/opt/java1.3/jre/lib/IA64:/opt/java1.3/jre/lib/IA64/classic:/Baan/bse/shlib:/usr/baan/shared/shlib:/usr/lib

Assuming /Baan/bse is the BSE and /usr/baan/shared is the SSA TA License Manager home directory

To enable Java 1.4:

- 1 Make sure the LD\_PRELOAD is set. Take the following steps:
  - a Create a script with the following content:
 

```
#!/bin/ksh

export LD_PRELOAD=/opt/java1.4/jre/lib/IA64N/hotspot/libjvm.so
$BSE/bin/bshell6.1 "$@"
```
  - b Create a new bshell entry in the \$BSE/lib/ipc\_info like bshell\_j14, pointing to the script.

Simply copy the bshell entry and change the entries, for example:

```
bshell_j14    s    0    0    p    ${BSE}/bin/bshell_j14
```
  - c Make sure the bshell name in the BW configuration is bshell\_j14.
- 2 Make sure the file \${BSE}/java/jvm\_options exists and contains -Xusealtsigs.
- 3 Make sure LD\_LIBRARY\_PATH in \${BSE}/lib/bse\_vars points to the Java 1.4 libraries:
 

```
LD_LIBRARY_PATH=/opt/java1.4/jre/lib/IA64N:/opt/java1.4/jre/lib/IA64N/hotspot:/opt/java1.4/jre/lib/IA64N/native_threads
```

To enable java 1.5, a similar procedure is needed as for java 1.4.

## IBM Power\_PC AIX

Supported:

- AIX 5.1, 5.2, 5.3

Supported databases:

- Oracle 9.2, 10.1, 10.2
- Informix: 7.31, 9.40, 10
- DB2 UDB: 8.1, 8.2
- Bisam 2.1

## Required OS patches

6.1c.07.09 was the first porting set built based on XL C/C++ ED V7.0. Make sure the required XL C/C++ Enterprise Edition V7.0 library patches are installed:

<http://www-1.ibm.com/support/docview.wss?uid=swg24010363>

## DB2 UDB

Make sure the shared library search path LIBPATH of the environment points to the DB2 libraries.

## Java 1.4 and java 1.5 support

Make sure the file `${BSE}/java/jvm_options` exists and contains:

`-Djava.compiler=NONE`

## Sun Sparc Solaris / Fujitsu Siemens Sparc Solaris

Supported:

- Solaris: 8, 9, 10

Supported RDBMS:

- Oracle 9.2, 10.1, 10.2
- Informix: 7.31, 9.40, 10
- DB2 UDB 8.1, 8.2
- Bisam 2.1

## Required OS patches

Porting set 6.1c.07.09 was the first porting set built on Sun Studio 10. Make sure the required patches for your Solaris version are installed.

[http://developers.sun.com/prodtech/cc/downloads/patches/ss10\\_patches.html](http://developers.sun.com/prodtech/cc/downloads/patches/ss10_patches.html)

Solaris 8: Make sure the following Sun OS patches are installed:

- patch 109147
- patch 108434
- patch 108827

If you use bshellxma6.1, make sure the related patches are installed:

<http://docs.sun.com/source/817-0642/patches.html>

## Java 1.4 and java 1.5 support

Make sure the file `${BSE}/java/jvm_options` exists and contains: `-Xusealtsigs`.

Make sure the `LD_LIBRARY_PATH` in `${BSE}/lib/bse_vars` points to the Java 1.4 or java 1.5 libraries.

## Microsoft x86 Windows

Supported OS version:

- Windows 2003 SP1:
  - Standard and Enterprise Edition
  - Small Business Server

Supported RDBMS:

- Oracle: 9.2, 10.1, 10.2
- Informix: 7.31, 9.40, 10
- DB2 UDB: 8.1, 8.2
- SQL Server 2000

## Java support

In the future, Microsoft will discontinue support for Microsoft Java Virtual Machine. See <http://www.microsoft.com/mscorp/java/>.

Therefore, the porting set by default supports the Sun JRE on Windows.

Both MS JVM and SUN JRE will be supported for a while to enable a smooth transition.

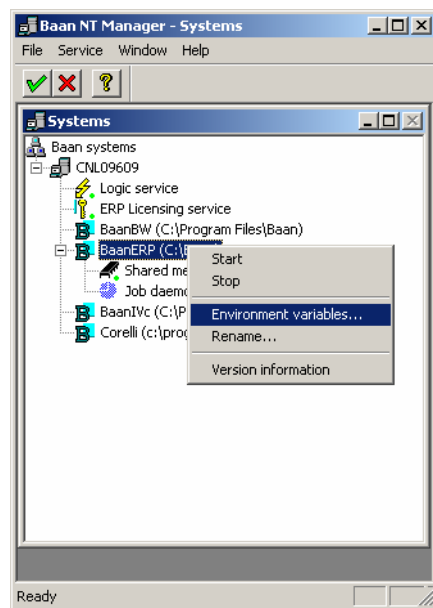
Support for MS JVM will be removed in a future release of the porting set, according to the desupport by Microsoft.

To enable the Sun JRE, take the following steps:

- 1 Install the Sun JRE
- 2 Make sure the System Environment PATH variable contains the following paths:
  - a Required path of the JRE, for example: *<JRE install dir>\bin*
  - b Required path of the hotspot library, for example *<JRE install dir>\bin\hotspot (java1.3)*
  - c Required path of the jvm.dll, for example *<JRE install dir>\bin\client (java 1.4 and java 1.5)*
  - d C:\Baan\shlib # assuming default installation of Baan
  - e C:\Baan\bin# assuming default installation of Baan

**Caution:** To activate these variables, you must restart SSA Baan ERP.

To avoid having to restart Microsoft Windows, you can add or adjust the PATH variable to the environment variables in the Baan NT Manager:



To enable the Microsoft JVM:

- Configure the use of the Microsoft JVM for the Baan ERP environment:
  - Add use\_msjava\_dll:1 to the \$BSE\lib\defaults\bshell file.
- or:
- Use USE\_MSJAVA\_DLL=1 as environment variable.

The default value of this variable is **0**, which enables the Sun JRE.

## Linux x86 Suse

Supported:

- SLES 8, 9

Supported databases:

- Informix: 9.40, 10
- Oracle 9.2, 10.1, 10.2
- Bisam 2.1

Hardware:

- Pentium III (minimum)

If you create an account on your operating system that will serve as Informix accounts, do not use a capital letter as the first letter for the password. The Informix binary cannot handle a password that starts with a capital letter.

To use this porting set, you require a license key. Solution 142799 provides a correction program to add the related commercial function.

### If you move an existing Baan IV environment from another OS to Linux

Be sure to install solution 142799 and run the correction program before you move the BSE environment, because you cannot perform subsequent installation due to the required license key.

To enable the porting set, take the following steps:

- 1 Install solution 142799.



- 2 Run correction program ottcorlinux.
- 3 Migrate the Baan IV environment to the Linux platform.
- 4 Activate **Porting Set Linux x86 Suse** in the Maintain Requested System Configuration (ttadv0145m000) session and request a new license key.

SSA Global recommends the Java engine Sun JRE.

This porting set supports the remote bisam database and distributed Baan IV application servers.

### Upgrade from porting set 6.1c.07.04

To upgrade from porting set 6.1c.07.04, you require a new validation key. Two procedures are possible:

#### Standard procedure:

Use this procedure if you can perform the installation during office hours:

- 1 Inform SSA Validation, [validation@baan.com](mailto:validation@baan.com), that they can expect a new key request soon and that you expect the request to be handled quickly.
- 2 Install the new porting set using the standard procedure.
- 3 Request a new validation key, wait for the response from SSA validation, and rebrand the environment.

The advantage of this method is that you use standard procedures. Note, however, that this procedure requires close cooperation with SSA Validation if uptime of the environment is important.

#### High-availability procedure:

With this procedure, the new key request is separated from the actual porting set implementation.

Key request:

- 1 Unpack the porting set in a separate directory.
- 2 Create a new directory *<temp BSE env>/bin* and copy the file *<new porting set>/bin/brand6.1* to this directory.
- 3 Start a BW connection with the following setting in the **Command** field:

- -- -set BSE\_BIN=<temp BSE env>/bin
- 4 Follow the steps of the process to request a new license key up to and including the step "Print the requested system configuration."
- 5 Send the key request to SSA Validation, [validation@baan.com](mailto:validation@baan.com), and wait for the response.

Installation:

- 1 Install the porting set by means of the standard procedure.
- 2 Run the Maintain Security Code / Validation Key session and create a new brand file.

## Informix

Informix IDS 9.40 requires a minimum of Suse 8 Service Pack 3.

Informix 10 requires a minimum of Suse 9.

## Oracle

SSA Global recommends Suse SLES 8 with SP3 as a minimum.

## HP Alpha Tru64

Supported:

- Tru64: 5.1b, 5.1b-1, 5.1b-2, 5.1b-3

Supported databases:

- Oracle: 9.2, 10.1, 10.2
- Informix: 7.31, 9.40, 10.1
- Bisam 2.1

If you create an account on your operating system that will serve as an Informix account, do not use a capital letter as the first letter for the password.

The Informix binary cannot handle a password that starts with a capital letter.

## Required OS patches

Porting set 6.1c.07.10 is the first porting set built on HP C++ V7.1. Make sure the required patches for your Tru64 version are installed.

Check the following link if you require a newer C++ redistribution kit. The redistribution kit must be compatible with V7.1

<ftp://ftp.compaq.com/pub/products/C-CXX/tru64/cxx/CXXREDIST.HTM>

Before you use the combination HP Tru64/Informix 7.31, be sure to install Informix patch IDS 7.31.FD1 or later.

## Fujitsu Siemens Mips Reliant UNIX

Supported:

- Reliant Unix V5.45

Supported RDBMS:

- Informix: 7.31, 9.40
- Bisam 2.1

The porting set for Reliant UNIX is available on request. Contact your support representative.



## IBM DB2

Supported:

- DB2: V8.1, V8.2

You are advised not to install fixpack 9 or 10 as they can lead to error “db2 error sqlcode -99999 [[CLI Driver] CLI0125E” in certain situations.

## IBM Informix

Supported:

- Informix IDS: 7.31, 9.40, 10

### Informix 9.40, Windows only

Before you start the installation, you must start Regedit.

Go to:

`HKEY_LOCAL_MACHINE\SOFTWARE\INFORMIX\ONLINE\<$INFORMIXSERVER>\Environment`

and make the following string value:

```
INFORMIXSQLHOSTS=\\<servername>
```

The problem is caused by the Informix software and will be solved in a future release of Informix 9.40.

### Informix 7.31

The minimum required patch level required is IDS 7.31.FD1

### Informix 9.04

For performance reasons we recommend 9.40.C.08 or higher

### Informix 10

For performance reasons we recommend 10.00.C04 or higher

## Microsoft SQL Server

Supported:

- SQL Server 2000 SP3a, SP4

Level 2 is supported with SQL Server 2000/SSA Baan IVc4.

To enable the driver:

- 1 Install solution 142802.
- 2 Run correction program ottcormsql.
- 3 Click **Activate MSQl Server Level II** in the Maintain Requested System Configuration (ttadv0145m000) session and request a new license key

## Oracle

Supported:

- Oracle SE/EE 9.2, 10.1, 10,2
  - Standard Edition
  - Enterprise Edition
  - Standard Edition One





### Java options

SSA Global recommends that you deactivate the JIT compiler and raise the maximum heap size. To deactivate the compiler, set the following values in \$BSE/java/jvm\_options:

- Djava.compiler=NONE
- Xmx256m

### Supported Java versions

SSA Global advises customers to use the latest available minor java version.

For this porting set, J2SE 1.4.2.x is the recommended version.

OS	Java 1.3.1	Java 1.4	Java 1.5
HP Tru64_Unix	Yes	Yes	No
HP PARISC HP-UX	Yes	Yes	Yes
HP IA64 HP-UX	Yes	Yes	Yes

IBM Power_PC AIX	Yes	Yes	No <sup>2</sup>
Linux x86 Suse (Sun JRE)	Yes	Yes	No <sup>2</sup>
Microsoft x86 Windows <sup>1</sup>	Sun JRE (recommended)	Sun JRE (recommended)	Sun JRE (recommended)
Microsoft x86 Windows <sup>1</sup>	MS JVM 3167 and higher		
Sun Sparc Solaris	Yes	Yes	Yes
Fujitsu-Siemens Sparc Solaris	Yes	Yes	Yes

<sup>1</sup> For more information, refer to the “Java Support” section of Microsoft x86 Windows in Chapter 2.

<sup>2</sup> For validation of Java 1.5 for this platform check solution 15219 at the OnePoint Support site.  
Validation will be expected shortly after the release of this porting set.

#### 6.1c.07.10 features

##### Adjustable log size

By default the size of the logfiles in \$BSE/log is 512k. When the log file exceeds that size it will move the logfile to type olg and start writing from scratch.

With the newly introduced resource 'log\_size' the size of the log files can be adjusted. The default value is: 512

##### JVMI version

With the command:

```
java -cp bjvmi.jar BJVMIVersion
```

the JVMI version will be provided.



## Oracle 10.2

When first using Oracle 10.2 you might get a messages that the shared libraries are not available.

In that case, check the file permissions for 'others' on settings of the Oracle install directory, especially the lib and client directories.

## To upgrade from a porting set before 6.1c.07.08 [Oracle with Solaris/Tru64/HP-UX PA-RISC]

For the operating systems Solaris, HPTru64 and PA-RISC HP-UX the binding with the oracle client is changed from static to shared library based. The advantage is that you are now able to use the Oracle client appropriate for your environment, rather than depend on the client libraries used during the build of this porting set.

If Oracle is running on a system other than your SSA ERP(like BaanIV), take the following steps to prepare your environment:

- 1 Prepare the Oracle connection from the ERP system to the Oracle instance.
- 2 Make sure the appropriate Oracle client is installed on the ERP system.

- 3 Configure OracleNet on the ERP system to point to your Oracle instance.
- 4 Check if this connection is working, for instance, using sqlplus on the ERP system to connect to your Oracle instance.

In all cases:

- 1 If you made manual changes to \$BSE/lib/ora/oracle\_home, make sure these are reflected in the configured oracle communication.
- 2 Run \$BSE/bin/ora\_update. This script will remove \$BSE/lib/ora/oracle\_home and perform some other adjustments.
- 3 Test the environment.

## InstallShield-based BW removed, since 6.1c.07.08

SSA Global provides an MSI-based BW installation. This BW installation is a replacement for the IS3-based BW installation, which is no longer delivered.

## Microsoft JVM, upgrade before 6.1c.07.08

The Sun JRE has become the default JVM in porting set 6.1c.07.08. If you still want to use the Microsoft JVM, be sure to make the following adjustments in the environment:

Configure the use of the Sun JRE for the Baan ERP environment:

- Add use\_msjava\_dll:1 to the \$BSE\lib\defaults\bshell file

Or:

- Use USE\_MSJAVA\_DLL=1 as environment variable.

## Recreate shm\_values, upgrade before 6.1c.07.07

With porting set 6.1c.07.08, the layout of the shm\_param file is changed, so if you upgrade from a porting set before 6.1c.07.08, plan the following action:

- After you install this porting set, you must recreate the shm\_param file in \$BSE/lib. To do so, you must run shm\_values6.1 and redirect the output to shm\_param.

The reason for this recreation is because, in this file, shared memory parameters are stored related to the version of your operating system version. In the past, this relation was stored incorrectly.

## Range expression validation

With porting set 6.1c.07.09, the validation of domain range expressions has been extended with additional logging.

Until now, the porting set tolerated particular domain range constructions, which are actually incorrect and can lead to behavior other than that intended by the developer.

The validation of domain ranges is improved so that from now on erroneous range definitions are reported.

Examples of range definitions that are reported include:

- **[c-a]**  
Reported as a problem because **A** comes before **C**. During runtime, only **C** will be selected.

By using **[a-c]**, the developer receives the range of A, B, and C.

The expression to specify A or C or a hyphen is: **[c\-a]** or **[-ac]**.

- **[\_-.]**  
Again, in the range, the dot comes before the underscore. During runtime, only the underscore is selected.

By using **[-.\_]**, the developer selects the range of dot up until underscore.

Or:

The user perhaps wanted to have the selection of dot, underscore, and dash. In that case, the user can use `[_.\-]` [**underscore dot backslash dash**].

Because dash is a special character, in the range definition, the dash is preceded by a backslash to indicate that the character must be handled as a range character.

Erroneous range definitions are reported as a domain: range expression error 60.

## HP-UX: hostname length limited to max 20 characters

HP-UX 11.23.05.05 and later support extended hostname lengths. SSA ERP LN 6.1 does not support host names beyond 20 characters in length.

## Oracle 9.2.0.6 and 10.1.0.4

At the time this porting set was released, an issue with Oracle 9.2.0.6 and 10.1.0.4 existed. After you upgrade to this Oracle patch, you might not be able to log on again and receive error 7413 (ORA-6413).

Check solution 200328 for the latest information on this issue.

## RosettaNet Enabling Kit, Windows-only issue

If the Baan IVc4 environment runs on a Windows platform and the integration with the SSA RosettaNet Enabling Kit is required, be sure to install the Microsoft dll MSVCP60.dll.

The Microsoft DLL MSVCP60.dll can be downloaded through solution 147212.



## Oracle 7 driver

The Oracle 7 driver has been removed since porting set 6.1c.07.06



---

## Chapter 7

### Deprecation Notes

# 7

This chapter identifies areas in the porting set that will not be supported in the future.

#### bdbpre/ bdbpost option `-q`

The `-q` option has been identified as a redundant and confusing option. The `-E` and `-O` option deliver the same functionality. Therefore, the `-q` option is deprecated and will not be supported in porting sets built after 2005.

