



▶▶ SSA® Baan IV / Triton 3

Technical Notes Portingset 6.1c.07.08

© Copyright 2005 by Baan International B.V., a subsidiary of SSA Global Technologies, Inc.

All rights reserved. No part of this publication may be reproduced, stored in a retrieval system, or transmitted in any way or by any means, including, without limitation, photocopying or recording, without the prior written consent of BaanTM International B.V.

Important Notices

The material contained in this publication (including any supplementary information) constitutes and contains confidential and proprietary information of Baan International B.V.

By gaining access to the attached, you acknowledge and agree that the material (including any modification, translation or adaptation of the material) and all copyright, trade secrets and all other right, title and interest therein, are the sole property of Baan International and that you shall not gain right, title or interest in the material (including any modification, translation or adaptation of the material) by virtue of your review thereof other than the non-exclusive right to use the material solely in connection with and the furtherance of your license and use of software made available to your company from Baan International pursuant to a separate agreement ("Purpose").

In addition, by accessing the enclosed material, you acknowledge and agree that you are required to maintain such material in strict confidence and that your use of such material is limited to the Purpose described above.

Although Baan International has taken due care to ensure that the material included in this publication is accurate and complete, Baan International cannot warrant that the information contained in this publication is complete, does not contain typographical or other errors, or will meet your specific requirements. As such, Baan International does not assume and hereby disclaims all liability, consequential or otherwise, for any loss or damage to any person or entity which is caused by or relates to errors or omissions in this publication (including any supplementary information), whether such errors or omissions result from negligence, accident or any other cause.

Baan International B.V., is a wholly owned subsidiary of SSA® Global TechnologiesTM, Inc.

Trademark Acknowledgments

SSA Global, SSA and the SSA Global logo are trademarks of SSA Global Technologies, Inc. in the United States and/or other countries. Baan is a trademark of Baan International B.V., in the United States and/or other countries.

All other company, product, trade or service names referenced may be registered trademarks or trademarks of their respective owners.

Publication Information

Document code	: U8857A US
Release	: SSA® Baan IV / Triton 3
Document title	: Technical Notes Portingset 6.1c.07.08
Publication date	: July 05

Table of Contents

Chapter 1	Introduction.....	1-1
	End-of-Service notifications	1-1
	Installation notes	1-2
Chapter 2	Operating system notes.....	2-1
	HP PA-RISC HP-UX	2-1
	HP IA64 HP-UX	2-2
	IBM Power_PC AIX.....	2-4
	Microsoft x86 Windows	2-4
	Sun Sparc Solaris / Fujitsu Siemens Sparc Solaris	2-7
	Linux x86 Suse	2-7
	HP Alpha Tru64	2-10
	Fujitsu Siemens Mips Reliant Unix	2-10
Chapter 3	RDBMS notes.....	3-1
	IBM DB2	3-1
	IBM Informix.....	3-1
	Microsoft SQL Server.....	3-2
	Oracle	3-2
Chapter 4	Java notes.....	4-1
	Java options.....	4-1
	Supported Java versions	4-2

Chapter 5 Known issues / points of attention5-1

 To upgrade from a porting set before 6.1c.07.08 [Oracle with Solaris/Tru64/HP-UX PA-RISC] ..5-1

 InstallShield based BW removed, since 6.1c.07.085-2

 Microsoft JVM, upgrade before 6.1c.07.085-2

 Recreate shm_values, upgrade before 6.1c.07.075-2

 Oracle 9.2.0.65-3

 RosettaNet Enabling Kit, Windows only issue5-3

 Oracle 7 driver5-3

Chapter 6 Deprecation notes6-1

 bdbpre/ bdbpost option -q6-1

About this Guide

This document provides Technical Notes to inform you about the portingset 6.1c.07.08.

Send us your comments

We continually review and improve our documentation. Any remarks/requests for information concerning this document or topic are appreciated. Please e-mail your comments to documentation@ssaglobal.com.

In your e-mail, refer to the document number and title. More specific information will enable us to process feedback efficiently.

For last minute notes regarding this portingset check solution 15219 at the SSA Global OnePoint Support site.

<http://www.ssaglobal.com/services/support/online.aspx>

End-of-Service notifications

The in these notes mentioned support is restricted by the support provided by the actual vendor.

Example: SSA Global will provide support for Microsoft Windows 2003 on this portingset as long as Microsoft provides standard support for Windows 2003.

Windows 2000

Microsoft has withdrawn mainstream support for Windows 2000 June 30 2005. SSA Global will continue the support for SSA Global's applications in combination with Windows 2000 until December 2005. If you require extended support for Windows 2000 after this, please contact you locale SSA Global support centre. Do so before November 30 2005.

Tru64 4.0f and 4.0g

The HP Tru64 4.0f and 4.0g versions are already in PVS support of HP. SSA Global will end the support for these versions by Dec 2005. Customers are advised to plan migration to a later version.

SuSe 8

Novell will withdraw maintenance support for SuSe 8 by December 31 2005. Customers are advised to plan migration.

SQL Server 7

Microsoft will withdraw mainstream support for SQL Server 7 December 31 2005. Customers are advised to plan migration to a later version.

Installation notes

Update Windows portingset

For the installation Guide for the porting set on a Windows platform, check solution 125018 at the SSA Global OnePoint Support site.

<http://www.ssaglobal.com/services/support/online.aspx>

HP PA-RISC HPUX

Supported: HP-UX 11i v1, v2 (11.00, 11.11 and 11.23)

Supported databases: Oracle 9.2, 10g
Informix 7.31, 9.40, 10
Bisam 2.1

Required OS patches

Make sure to install one of the following runtime library patches, or later:

- PHSS_26945: s700_800 11.x HP aC++ -AA runtime libraries
- PHSS_26946: s700_800 11.11 HP aC++ -AA runtime libraries

In addition, SSA recommends that you install the core patches distributed on the extension software media.

If you use the Java interface, for example, when you use SSA Technical Architecture, check the following link for patches:

<http://www.hp.com/products1/unix/java/patches/index.html>

Java 1.4 support

To enable java 1.4:

- 1 Make sure the LD_PRELOAD is set. This can be arranged as follows:
 - a Create a script with the following content:


```
#!/bin/ksh
export LD_PRELOAD=/opt/java1.4/jre/lib/PA_RISC2.0/hotspot/libjvm.sl
$BSE/bin/bshell6.1 "$@"
```
 - b Create a new bshell entry in the \$BSE/lib/ipc_info like bshell_j14, pointing to the script
just copy the 'bshell' entry and change the entries, example:
bshell_j14 s 0 0 p \${BSE}/bin/bshell_j14
 - c Make sure the bshell name in the BW configuration is: bshell_j14
 - d Make sure in the BW configuration is: -- -set LD_PRELOAD=""
note: -- is (twice the minus sign)
- 2 Make sure the file \${BSE}/java/jvm_options exists and contains: -Xusealtsigs
- 3 Make sure the SHLIB_PATH in \${BSE}/lib/bse_vars points to the Java 1.4 libraries:


```
SHLIB_PATH=/opt/java1.4/jre/lib/PA_RISC2.0:/opt/java1.4/jre/lib/PA_RISC2.0/hotspot:/opt/java1.4/jre/lib/PA_RISC2.0/native_threads
```

HP IA64 HP-UX

Supported: HP-UX 11.23
Supported RDBMS: Oracle 9.2, 10g

Usage of this portingset requires a license key. Solution 146337 provides a correction program to add the related commercial function.

In case an existing SSA Triton3/Baan IV environment is moved from another OS to HP Itanium:

Be sure to install solution 146337 and run the correction program *before* moving the BSE environment, as installation afterwards is not possible due to the required license-key.

Required OS patches

If you use the Java interface, for example, when you use SSA Technical Architecture, check the following link for patches:

<http://www.hp.com/products1/unix/java/patches/index.html>

Java support

To enable java 1.3:

- 1 Add to the `$BSE/java/jvm_options`
`-Djava.library.path=/opt/java1.3/jre/lib/IA64:/opt/java1.3/jre/lib/IA64/classic:/Baan/bse/shlib:/usr/baan/shared/shlib:/usr/lib`
 - Assuming `/Baan/bse` is the BSE and `/usr/baan/shared` is the SSA® TA License Manager home directory

To enable java 1.4:

- 1 Make sure the `LD_PRELOAD` is set.
This can be arranged by:
 - a Create a script with the following content:


```
#!/bin/ksh
export LD_PRELOAD=/opt/java1.4/jre/lib/IA64N/ hotspot/libjvm.so
$BSE/bin/bshell6.1 "$@"
```
 - b Create a new bshell entry in the `$BSE/lib/ipc_info` like `bshell_j14`, pointing to the script
Just copy the 'bshell' entry and change the entries, example:


```
bshell_j14      s      0      0      p      ${BSE}/bin/bshell_j14
```
 - c Make sure the bshell name in the BW configuration is: `bshell_j14`
 - d Make sure in the BW configuration is: `-- -set LD_PRELOAD=""`
note: `--` is (twice the minus sign)
- 2 Make sure the file `${BSE}/java/jvm_options` exists and contains:


```
-Xusealtsigs
```
- 3 Make sure the `${BSE}/lib/bse_vars` points to the Java 1.4 libraries
- 4 Make sure `LD_LIBRARY_PATH` in `${BSE}/lib/bse_vars` points to the Java 1.4 libraries:


```
LD_LIBRARY_PATH=/opt/java1.4/jre/lib/IA64N:/opt/java1.4/jre/lib/IA64N/ hotspot:/opt/java1.4/jre/lib/IA64N/native_threads
```

IBM Power_PC AIX

Supported:	AIX 5.1, 5.2, 5.3
Supported RDBMS:	Oracle 9.2, 10g Informix 7.31, 9.40, 10 DB2 UDB 8.1, 8.2 Bisam 2.1

Required OS patches

Make sure the required c++ runtime library patches are installed:

<http://www-1.ibm.com/support/docview.wss?uid=swg24001467>

If bshellxma6.1 is used:

- Make sure the related patches are installed
<http://www-1.ibm.com/support/docview.wss?uid=swg24001467>

DB2 UDB

Make sure the shared library search path LIB_PATH of the environment is pointing to the DB2 libraries.

Java 1.4 support

Make sure the file \${BSE}/java/jvm_options exists and contains: -Djava.compiler=NONE

Microsoft x86 Windows

Supported OS version:	Windows 2003 (Standard and Enterprise Edition)
Supported RDBMS:	Oracle 9.2, 10g Informix 7.31, 9.40, 10 DB2 UDB 8.1, 8.2 SQL Server 7, 2000

Java support

In the future Microsoft will stop supporting their MS Java Virtual Machine; see <http://www.microsoft.com/mscorp/java/>.

Therefore the porting set is extended with Sun JRE support on Windows.

Both MS JVM and SUN JRE will be supported for a while to enable a smooth transition.

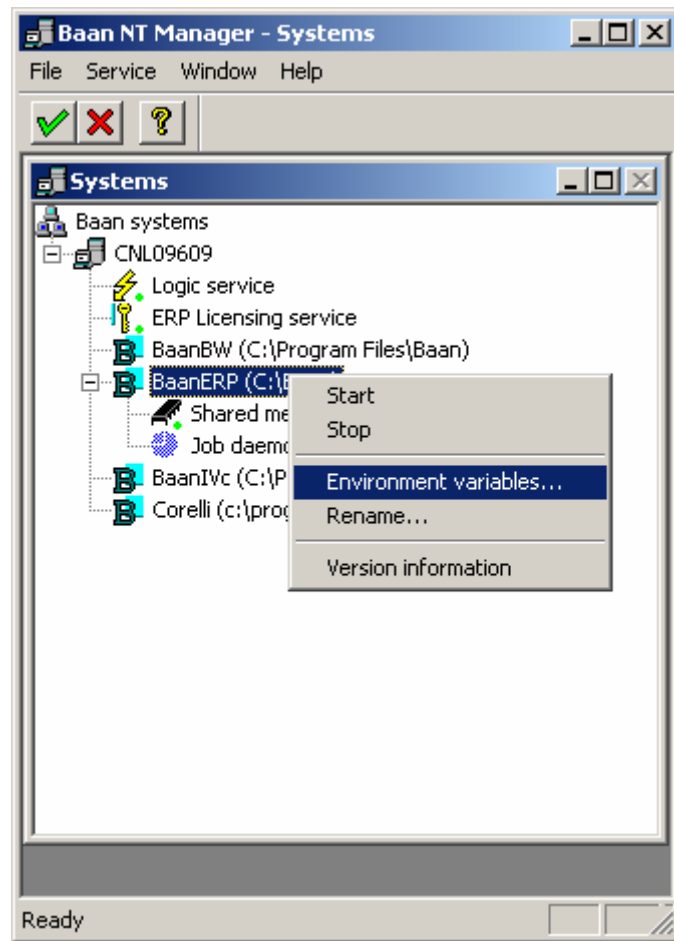
Support for MS JVM will be removed in a future release of the portingset according to the de-support by Microsoft.

To enable the Sun JRE take the following steps:

- 1 Install the Sun JRE
- 2 Make sure the System Environment PATH variable contains the following paths:
 - a Required path of the JRE, for example: <JRE install dir>\bin
 - b Required path of the hotspot library, for example <JRE install dir>\bin\hotspot (java1.3)
 - c Required path of the jvm.dll, for example <JRE install dir>\bin\client (java 1.4)
 - d C:\Baan\shlib # assuming default installation of Baan
 - e C:\Baan\bin# assuming default installation of Baan

Caution: Activating these variables requires a restart of the Baan ERP environment.

A windows reboot can be prevented by adding/adjusting the PATH variable to the environment variables via the Baan NT Manager.



To enable the Microsoft JVM:

- 1 Configure the use of the Micorosoft JVM for the Baan ERP environment by:
 - adding use_msjava_dll:1 to the \$BSE\lib\defaults\bshell file
 - or
 - using USE_MSJAVA_DLL=1 as environment variable

The default value of this variable is 0, which enables the Sun JRE.

Sun Sparc Solaris / Fujitsu Siemens Sparc Solaris

Supported:	Solaris 8, 9 and 10
Supported RDBMS:	Oracle 9.2, 10g Informix 7.31, 9.40, 10 DB2 UDB 8.1, 8.2 Bisam 2.1

Required OS patches

Solaris 8: Make sure the following Sun OS patches are installed:

- patch 109147
- patch 108434
- patch 108827

If bshellxma6.1 is used:

- Make sure the related patches are installed:
<http://docs.sun.com/source/817-0642/patches.html>

Java 1.4 support

Make sure the file \${BSE}/java/jvm_options exists and contains: `-Xusealtsigs`

Make sure the LD_LIBRARY_PATH in \${BSE}/lib/bse_vars points to the Java 1.4 libraries

Linux x86 Suse

Supported:	SLES 8, 9
Supported databases:	Informix 9.40, 10 Oracle 9.2, 10g Bisam 2.1
Hardware:	minimal Pentium-III

If you create an account on your operating system that will serve as Informix accounts, do not use a capital letter as the first letter for the password. The Informix binary cannot handle a password that starts with a capital.

Usage of this porting set requires a license key. Solution 142799 provides a correction program to add the related commercial function.

In case an existing Baan IV environment is moved from another OS to Linux:

Be sure to install solution 142799 and run the correction program before moving the BSE environment as installation afterwards is not possible due to the required license-key.

To enable the portingset:

- 1 Install solution 142799
- 2 Run correction program ottcorlinux
- 3 Migrate the Baan IV environment to the Linux platform
- 4 Activate "Porting Set Linux x86 Suse" in Maintain Requested System Configuration (ttadv0145m000) and request a new license key

Recommended Java engine is the Sun JRE.

Remote bisam database and distributed Baan IV application servers is supported with this portingset.

Upgrade from portingset 6.1c.07.04

Upgrading from portingset 6.1c.07.04 requires a new validation key. Two procedures are possible:

Standard procedure:

To be used if installation can be performed during office hours

- 1 Inform SSA Validation, validation@baan.com, that they can expect a new key request on short term and that it's expected to be handled quickly.
- 2 Install the new portingset via the normal procedure
- 3 Request a new validation key, wait for the response of SSA validation and re-brand the environment

Advantage of this method: using standard procedures. Point of attention: requires close cooperation with SSA Validation if uptime of the environment is important.

High availability procedure:

With this procedure the new key request is separated from the actual portingset implementation.

Key request:

- 1 Unpack the portingset in a separate directory
- 2 Create a new directory and copy the file <new portingset>/bin/brand6.1 to this directory.
- 3 Start a BW connection with the following setting in the Command field:
 - -- -set BSE_BIN=<new_portingset>/bin
- 4 Follow the steps for requesting a new license key up until the point "Print requested System Configuration"
- 5 Send the key request to SSA Validation, validation@baan.com, and wait for the response.

Installation:

- 1 Install the portingset via the normal procedure
- 2 Start the Maintain Security Code / Validation Key session and create a new brand file

Informix

Informix IDS 9.40 requires minimal Suse 8 Service Pack 3.

Informix 10 requires minimal Suse 9.

Oracle

Suse SLES 8 with SP3 is recommended.

HP Alpha Tru64

Supported: Tru64 4.0f, 4.0g, 5.1b, 5.1b-1, 5.1b-2

Supported databases: Oracle 9.2, 10g
Informix 7.31, 9.40, 10
Bisam 2.1

When creating an account on your operating system that will serve as Informix account, do not use a capital letter as the first letter for the password.
The Informix binary cannot handle a password that starts with a capital.

Required OS patches

Check the following link if a newer C++ redistribution kit is required. The redistribution kit must be compatible with V6.5-032:

<ftp://ftp.compaq.com/pub/products/C-CXX/tru64/cxx/CXXREDIST.HTM>

Before you use the combination HP Tru64/ Informix 7.31, be sure to install Informix patch IDS 7.31.FD1 or later.

Tru64 4.0f and 4.0g

Set the following environment variable to prevent core-dumps of c++ based binaries.

This environment settings keeps c++ runtime in memory, preventing dlclose() to core dump.

`_RLD_LIST=DEFAULT:/usr/shlib/libexc.so:/usr/lib/cmplrs/cxx/libcxx.so`

Fujitsu Siemens Mips Reliant Unix

Supported: Reliant Unix V5.45

Supported RDBMS: Informix 7.31, 9.40, 10
Bisam 2.1

IBM DB2

Supported: DB2 V8.1, V8.2

IBM Informix

Supported: Informix IDS 7.31, 9.40, 10

Informix 9.40, Windows only

Before you start the installation you have to startup Regedit.

Go to:

`HKEY_LOCAL_MACHINE\SOFTWARE\INFORMIX\ONLINE\<$INFORMIXSERVER>\Environment`

and make the following string value:

`INFORMIXSQLHOSTS=\\<servername>`

The problem is caused by the Informix software and will be solved in a future release of Informix 9.40.

Informix 7.31

The minimum required patch level required is IDS 7.31.FD1

Microsoft SQL Server

Supported: SQL Server 7, 2000

Level 2 is supported with SQL Server 2000/SSA Baan IVc4.

To enable the driver:

- 1 Install solution 142802
- 2 Run correction program ottcormsql
- 3 Activate "MSQL Server level II" in Maintain Requested System Configuration (ttadv0145m000) and request a new license key

Oracle

Supported: Oracle SE/EE 9.2 and 10g

Java options

It's recommended to de-activate the JIT-compiler and raise the maximum heap size. You can do so by setting following values in `$BSE/java/jvm_options`:

```
-Djava.compiler=NONE  
-Xmx256m
```

Supported Java versions

Customers are advised to use the latest available minor java version.

For this portingset J2SE 1.4.2.x is the recommended version.

OS	Java 1.3.1	Java 1.4
HP Tru64_Unix	yes	yes
HP9000_PA8000/HPUX	yes	yes
IBM RS6000/AIX	yes	yes
Linux x86 Suse	Sun JRE	yes
Microsoft x86 Windows ¹	Sun JRE (recommended)	Sun JRE (recommended)
Microsoft x86 Windows ¹	MS JVM 3167 and higher	
Sun Sparc Solaris	yes	yes
Fujitsu-Siemens Sparc Solaris	yes	yes

¹ for details: see the “Java Support” section of Microsoft x86 Windows

To upgrade from a porting set before 6.1c.07.08 [Oracle with Solaris/Tru64/HP-UX PA-RISC]

For the operating systems Solaris, HPTru64 and PA-RISC HP-UX the binding with the oracle client is changed from static to shared library based. The advantage is that you can now use the Oracle client appropriate for your environment, rather than depend on the client libraries used during the build of this porting set.

To prepare your environment, take the following steps if Oracle is running on another system than the ERP:

- 1 Prepare the Oracle connection from the ERP system to the Oracle instance.
- 2 Make sure the appropriate Oracle client is installed on the ERP system.
- 3 Configure OracleNet on the ERP system to point to your Oracle instance.
- 4 Check if this connection is working, for instance, using sqlplus on the ERP system to connect to your Oracle instance.

In all cases:

- 1 If you made manual changes to \$BSE/lib/oracle_home, make sure these are reflected in the configured oracle communication.

- 2 Run \$BSE/lib/ora_update. This script will remove \$BSE/lib/oracle_home and perform some other adjustments.
- 3 Test the environment.

InstallShield based BW removed, since 6.1c.07.08

SSA Global provides an MSI based BW installation. This is a replacement for the IS3 based BW installation. The latter is not delivered anymore.

Microsoft JVM, upgrade before 6.1c.07.08

The Sun JRE has become the default JVM in porting set 6.1c.07.08. If you still want to use the Microsoft JVM, make sure you make the following adjustments in the environment:

Configure the use of the Sun JRE for the Baan ERP environment by:

- adding use_msjava_dll:1 to the \$BSE\lib\defaults\bshell file
- or
- using USE_MSJAVA_DLL=1 as environment variable

Recreate shm_values, upgrade before 6.1c.07.07

With porting set 6.1c.07.08 the lay-out of the shm_param file is changed, so if you upgrade from a porting set before 6.1c.07.08 plan the following action:

- After installation of this porting set you need to recreate the shm_param file in \$BSE/lib. You can do so by running shm_values6.1 and redirect the output to to shm_param.

The reason for this recreation is that in this file shared memory parameters are stored related to the version of your operating system version. In the past this relation was stored in the wrong way.

Oracle 9.2.0.6

At the moment this porting set was released there is an issue with Oracle 9.2.0.6. After upgrading to this Oracle patch you will not be able to log in again and receive error: 7413 (ORA-6413).

This issue is noted on Linux.

Please check solution **149275** for the latest information on this issue.

RosettaNet Enabling Kit, Windows only issue

If the Baan IVc4 environment is running on a Windows platform and the integration with the SSA RosettaNet Enabling Kit is required, be sure to install the Microsoft dll MSVCP60.dll.

The Microsoft dll MSVCP60.dll can be downloaded through solution **147212**

Oracle 7 driver

The Oracle 7 driver has been removed since porting set 6.1c.07.06

This chapter identifies areas in the portingset that will not be supported in the future.

bdbpre/ bdbpost option `-q`

The `'-q'` option has been identified as a redundant and confusing option. The `-E` and `-O` option deliver the same functionality. Therefore the `-q` option is deprecated and will not be supported in portingsets build after 2005.

