



►► SSA® Baan IV / Triton 3

Technical Notes for portingset
6.1c.07.05

© Copyright 2004 by Baan International B.V., a subsidiary of SSA Global Technologies, Inc.

All rights reserved. No part of this publication may be reproduced, stored in a retrieval system, or transmitted in any way or by any means, including, without limitation, photocopying or recording, without the prior written consent of BaanTM International B.V.

Important Notices

The material contained in this publication (including any supplementary information) constitutes and contains confidential and proprietary information of Baan International B.V.

By gaining access to the attached, you acknowledge and agree that the material (including any modification, translation or adaptation of the material) and all copyright, trade secrets and all other right, title and interest therein, are the sole property of Baan International and that you shall not gain right, title or interest in the material (including any modification, translation or adaptation of the material) by virtue of your review thereof other than the non-exclusive right to use the material solely in connection with and the furtherance of your license and use of software made available to your company from Baan International pursuant to a separate agreement ("Purpose").

In addition, by accessing the enclosed material, you acknowledge and agree that you are required to maintain such material in strict confidence and that your use of such material is limited to the Purpose described above.

Although Baan International has taken due care to ensure that the material included in this publication is accurate and complete, Baan International cannot warrant that the information contained in this publication is complete, does not contain typographical or other errors, or will meet your specific requirements. As such, Baan International does not assume and hereby disclaims all liability, consequential or otherwise, for any loss or damage to any person or entity which is caused by or relates to errors or omissions in this publication (including any supplementary information), whether such errors or omissions result from negligence, accident or any other cause.

Baan International B.V., is a wholly owned subsidiary of SSA® Global TechnologiesTM, Inc.

Trademark Acknowledgments

SSA Global, SSA and the SSA Global logo are trademarks of SSA Global Technologies, Inc. in the United States and/or other countries. Baan is a trademark of Baan International B.V., in the United States and/or other countries.

All other company, product, trade or service names referenced may be registered trademarks or trademarks of their respective owners.

Publication Information

Document code	: U8531A US
Release	: SSA® Baan IV / Triton 3
Document title	: Technical Notes for portingset 6.1c.07.05
Publication date	: October 04

Table of Contents

Chapter 1	Introduction	1-1
	End-of-Service notifications.....	1-1
	Installation notes.....	1-2
Chapter 2	Operating system notes	2-1
	HP PA-RISC HP-UX.....	2-1
	HP IA64 HP-UX.....	2-2
	IBM Power_PC AIX.....	2-3
	Microsoft x86 Windows.....	2-4
	Sun Sparc Solaris / Fujitsu Siemens Sparc Solaris	2-7
	Linux x86 Suse	2-7
	HP Alpha Tru64	2-10
	Fujitsu Siemens Mips Reliant Unix.....	2-10
	Java support	2-11
Chapter 3	RDBMS notes	3-1
	IBM DB2	3-1
	DB2 V7.2: at least fixpack 9 must be installed.IBM Informix	3-1
	Microsoft SQL Server	3-2
	Oracle	3-2
Chapter 4	Supported java versions	4-1
Chapter 5	Known issues	5-1

RosettaNet Enabling Kit, Windows only issue 5-1

Chapter 6 Deprecation notes..... 6-1

bdbpre/ bdbpost option -q..... 6-1

C-API 6-1

About this Guide

This document provides Technical Notes to inform you about the portingset 6.1c.07.05.

Send us your comments

We continually review and improve our documentation. Any remarks/requests for information concerning this document or topic are appreciated. Please e-mail your comments to documentation@ssaglobal.com.

In your e-mail, refer to the document number and title. More specific information will enable us to process feedback efficiently.

For last minute notes regarding this portingset check solution 15219 at the SSA Global OnePoint Support site.

<http://www.ssaglobal.com/services/support/online.aspx>

End-of-Service notifications

The in these notes mentioned support is restricted by the support provided by the actual vendor.

Example:

SSA Global will provide support for Microsoft Windows 2000 on this portingset as long as Microsoft provides standard support for Windows 2000.

Note:

Oracle will withdraw standard support for Oracle 8.1.7 end of 2004. Customers are advised to plan migration to a later version.

Note:

Microsoft will withdraw support for Windows NT December 2004. Customers are advised to plan migration to a later version.
This portingset is the last regular portingset build for Windows NT.

Installation notes

Update Windows portingset

For the installation Guide for the portingset on a Windows platform, check solution 125018 at the SSA Global OnePoint Support site.

<http://www.ssaglobal.com/services/support/online.aspx>

HP PA-RISC HPUX

Supported: HP-UX 11i v1 (11.00 and 11.11)

Supported databases: Oracle 8.1.7, 9.2, 10g
Informix 7.31, 9.40
Bisam 2.1

Java 1.4 support

To enable java 1.4:

- 1 Make sure the LD_PRELOAD is set. This can be arranged as follows:
 - a Create a script with the following content:

```
#!/bin/ksh
export LD_PRELOAD=/opt/java1.4/jre/lib/PA_RISC2.0/hotspot/libjvm.sl
$BSE/bin/bshell6.1 "$@"
```
 - b Create a new bshell entry in the \$BSE/lib/ipc_info like bshell_j14, pointing to the script
just copy the 'bshell' entry and change the entries, example:

```
bshe11_j14      s      0      0  p  ${BSE}/bin/bshe11_j14
```
 - c Make sure the bshell name in the BW configuration is: bshell_j14

- d Make sure in the BW configuration is: -- -set LD_PRELOAD=""
note: -- is (twice the minus sign)
- 2 Make sure the file \${BSE}/java/jvm_options exists and contains: -Xusealtsigs
- 3 Make sure the **SHLIB_PATH** in \${BSE}/lib/bse_vars points to the Java 1.4 libraries:
SHLIB_PATH=/opt/java1.4/jre/lib/PA_RISC2.0:/opt/java1.4/jre/lib/PA_RISC2.0/hotspot:/opt/java1.4/jre/lib/PA_RISC2.0/native_threads

HP IA64 HP-UX

Supported: HP-UX 11.23
Supported RDBMS: Oracle 9.2, 10g

SSA Baan IVc4 installation media is not adjusted at this moment to support installation on this platform.

Usage of this portingset requires a license key. Solution 146337 provides a correction program to add the related commercial function.

In case an existing SSA Triton3/Baan IV environment is moved from another OS to HP Itanium:

Be sure to install solution 146337 and run the correction program *before* moving the BSE environment, as installation afterwards is not possible due to the required license-key.

Java support

To enable java 1.3:

- 1 Add to the \$BSE/java/jvm_options
-Djava.library.path=/opt/java1.3/jre/lib/IA64:/opt/java1.3/jre/lib/IA64/classic:/Baan/bse/shlib:/usr/baan/shared/shlib:/usr/lib
 - Assuming /Baan/bse is the BSE and /usr/baan/shared is the SSA® TA License Manager home directory

To enable java 1.4:

- 1 Make sure the LD_PRELOAD is set.
This can be arranged by:
 - a Create a script with the following content:


```
#!/bin/ksh
export LD_PRELOAD=/opt/java1.4/jre/lib/IA64N/spot/libjvm.so
$BSE/bin/bshell6.1 "$@"
```
 - b Create a new bshell entry in the \$BSE/lib/ipc_info like bshell_j14, pointing to the script
Just copy the 'bshell' entry and change the entries, example:

```
bshell_j14      s      0      0      p      ${BSE}/bin/bshell_j14
```
 - c Make sure the bshell name in the BW configuration is: bshell_j14
 - d Make sure in the BW configuration is: -- -set LD_PRELOAD=""
note: -- is (twice the minus sign)
- 2 Make sure the file \${BSE}/java/jvm_options exists and contains:


```
-Xusealtsigs
```
- 3 Make sure the \${BSE}/lib/bse_vars points to the Java 1.4 libraries
- 4 Make sure LD_LIBRARY_PATH in \${BSE}/lib/bse_vars points to the Java 1.4 libraries:


```
LD_LIBRARY_PATH=/opt/java1.4/jre/lib/IA64N:/opt/java1.4/jre/lib/IA64N
/spot:/opt/java1.4/jre/lib/IA64N/native_threads
```

IBM Power_PC AIX

Supported:	AIX 5.1, 5.2
Supported RDBMS:	Oracle 8.1.7, 9.2, 10g Informix 7.31, 9.40 DB2 UDB 7.2, 8.1 Bisam 2.1

If bshellxma6.1 is used:

- Make sure the related patches are installed
<http://www-1.ibm.com/support/docview.wss?uid=swg24001467>

DB2 UDB

Make sure the shared library search path LIB_PATH of the environment is pointing to the DB2 libraries.

Java 1.4 support

Make sure the file \${BSE}/java/jvm_options exists and contains: -Djava.compiler=NONE

Microsoft x86 Windows

Supported OS version: NT 4.0, Windows 2000 and 2003

Supported RDBMS: Oracle 8.1.7, 9.2, 10g
Informix 7.31, 9.40
DB2 UDB 7.2, 8.1
SQL Server 7, 2000

This portingset is the last regular portingset build for Windows NT

Java support

In the near future Microsoft will stop supporting their MS Java Virtual Machine; see <http://www.microsoft.com/mscorp/java/>.

Therefore the portingset is extended with Sun JRE support on Windows.

Both MS JVM and SUN JRE will be supported for a while to enable a smooth transition.

Support for MS JVM will be removed in a future release of the portingset according to the de-support by Microsoft.

To enable the Sun JRE take the following steps:

1 Install the Sun JRE

Version 1.3.1 can be downloaded at

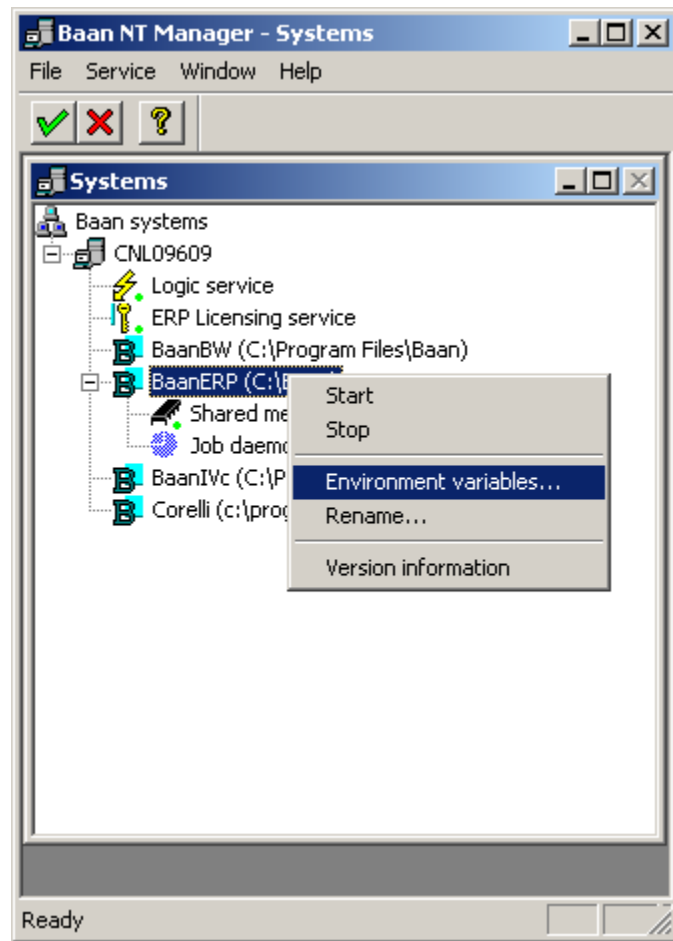
http://java.sun.com/products/archive/j2se/1.3.1_09/index.html.

2 Make sure the System Environment PATH variable contains the following paths:

- a** Required path of the JRE, for example: <JRE install dir>\bin
- b** Required path of the hotspot library, for example <JRE install dir>\bin\hotspot (java1.3)
- c** Required path of the jvm.dll, for example <JRE install dir>\bin\client (java 1.4)
- d** C:\Baan\shlib # assuming default installation of Baan
- e** C:\Baan\bin# assuming default installation of Baan

Caution: Activating these variables requires a restart of the Baan ERP environment.

A windows reboot can be prevented by adding/adjusting the PATH variable to the environment variables via the Baan NT Manager.



- 3 Configure the use of the Sun JRE for the Baan ERP environment by:
 - adding use_msjava_dll:0 to the \$BSE\lib\defaults\bshell file
 - \or
 - using USE_MSJAVA_DLL=0 as environment variable
- 4 To enable the use of the MSJVM the variable needs to be set to 1 or removed, as the default value is 1.

Sun Sparc Solaris / Fujitsu Siemens Sparc Solaris

Supported: Solaris 8 and 9

Supported RDBMS: Oracle 8.1.7, 9.2, 10g
Informix 7.31, 9.40
DB2 UDB 7.2, 8.1
Bisam 2.1

If bshellxma6.1 is used:

- Make sure the related patches are installed:
<http://docs.sun.com/source/817-0642/patches.html>

Java 1.4 support

Make sure the file \${BSE}/java/jvm_options exists and contains: [-Xusealtsigs](#)

Make sure the LD_LIBRARY_PATH in \${BSE}/lib/bse_vars points to the Java 1.4 libraries

Linux x86 Suse

Supported: SLES 8

Supported databases: Informix 9.40
Oracle 9.2, 10g
Bisam 2.1

Hardware: minimal Pentium-III

Usage of this portingset requires a license key. Solution 142799 provides a correction program to add the related commercial function.

In case an existing Baan IV environment is moved from another OS to Linux:

Be sure to install solution 142799 and run the correction program before moving the BSE environment as installation afterwards is not possible due to the required license-key.

To enable the portingset:

- 1 Install solution 142799
- 2 Run correction program ottcorlinux
- 3 Migrate the Baan IV environment to the Linux platform
- 4 Activate "Porting Set Linux x86 Suse" in Maintain Requested System Configuration (ttadv0145m000) and request a new license key

Recommended Java engine is the Sun JRE.

Remote bisam database and distributed Baan IV application servers is not supported with this portingset. It will be with portingset 6.1c.07.05.

Upgrade from portingset 6.1c.07.04

Upgrading from portingset 6.1c.07.04 requires a new validation key. Two procedures are possible:

Standard procedure:

To be used if installation can be performed during office hours

- 1 Inform SSA Validation, validation@baan.com, that they can expect a new key request on short term and that it's expected to be handled quickly.
- 2 Install the new portingset via the normal procedure
- 3 Request a new validation key, wait for the response of SSA validation and re-brand the environment

Advantage of this method: using standard procedures. Point of attention: requires close cooperation with SSA Validation if uptime of the environment is important.

High availability procedure:

With this procedure the new key request is separated from the actual portingset implementation.

Key request:

- 1 Unpack the portingset in a separate directory
- 2 Create a new directory and copy the file <new portingset>/bin/brand6.1 to this directory.
- 3 Start a BW connection with the following setting in the Command field:
 - --set BSE_BIN=<new_portingset>/bin
- 4 Follow the steps for requesting a new license key up until the point "Print requested System Configuration"
- 5 Send the key request to SSA Validation, validation@baan.com, and wait for the response.

Installation:

- 1 Install the portingset via the normal procedure
- 2 Start the Maintain Security Code / Validation Key session and create a new brand file

Informix

Supporting Informix requires as a minimum Suse SLES 8 with SP3

Oracle

Suse SLES 8 with SP3 is recommended.

HP Alpha Tru64

Supported: Tru64 4.0f, 4.0g, 5.1b, 5.1b-1, 5.1b-2

Supported databases: Oracle 8.1.7, 9.2, 10g
Informix 7.31, 9.40
Bisam 2.1

Check the following link if a newer C++ redistribution kit is required.
The redistribution kit needs to be compatible with V6.5-032

<ftp://ftp.compaq.com/pub/products/C-CXX/tru64/cxx/CXXREDIST.HTM>

Before using the combination HP Tru64/ Informix 7.31 make sure to install Informix patch [IDS 7.31.FD1 or later](#).

When creating an account on your operating system that will serve as Informix account, do not use a capital letter as the first letter for the password.

The Informix binary cannot handle a password that starts with a capital.

Fujitsu Siemens Mips Reliant Unix

Supported: Reliant Unix V5.45

Supported RDBMS: Oracle 8.1.7.x
Informix 7.31, 9.40
Bisam 2.1

Java support

For this portingset J2SE 1.3.1.x is the recommended version.

Customers are advised to use the latest available minor java version.

If the vendor does not support a specific J2SE version anymore, support by SSA is also dropped.

OS	Java 1.3.1	Java 1.4.2
HP PA-RISC HP-UX	yes	yes
IBM PowerPC AIX	yes	yes
Microsoft i386 Windows	Sun JRE	Sun JRE
Sun SPARC Solaris	yes	yes

IBM DB2

Supported: DB2 V7.2, V8.1

Customer running DB2 in level 1 mode are advised to contact SSA one point Support before migrating to DB2 V8.1

DB2 V7.2: at least fixpack 9 must be installed. IBM Informix

Supported: Informix IDS 7.31, 9.40

Informix 9.40, Windows only

Before you start the installation you have to startup Regedit.

Go to:

`HKEY_LOCAL_MACHINE\SOFTWARE\INFORMIX\ONLINE\<$INFORMIXSERVER>\Environment`

and make the following string value:

`INFORMIXSQLHOSTS=\\<servername>`

The problem is caused by the Informix software and will be solved in a future release of Informix 9.40.

Informix 7.31

The minimum required patch level required is IDS 7.31.FD1

Microsoft SQL Server

Supported: SQL Server 7, 2000

Level 2 is supported with SQL Server 2000/SSA Baan IVc4.

To enable the driver:

- 1 Install solution 142802
- 2 Run correction program ottcormsql
- 3 Activate "MSQL Server level II" in Maintain Requested System Configuration (ttadv0145m000) and request a new license key

Oracle

Supported: Oracle SE/EE 8.1.7, 9.2 and 10g

Benchmarks on Oracle 10g indicate a performance loss of about 10% in comparison with Oracle 9. Benchmarks on Oracle 9 indicate a performance loss of about 20% in comparison with Oracle 8.

Chapter 4

Supported java versions

4

Customers are advised to use the latest available minor java version.

For this portingset J2SE 1.3.1.x is the recommended version.

OS	Java 1.3.1	Java 1.4
HP Tru64_Unix	yes	yes
HP9000_PA8000/HPUX	yes	yes
IBM RS6000/AIX	yes	yes
Linux x86 Suse	Sun JRE	yes
Microsoft i386 Windows	Sun JRE (recommended)	Sun JRE (recommended)
Microsoft i386 Windows ¹	MS JVM 3167 and higher	
Sun Sparc Solaris	yes	yes
Fujitsu-Siemens Sparc Solaris	yes	yes

¹ for details: see the “Java Support” section of Microsoft i386 Windows

RosettaNet Enabling Kit, Windows only issue

If the Baan IVc4 environment is running on a Windows platform and the integration with the SSA RosettaNet Enabling Kit is required, be sure to install the Microsoft dll MSVCP60.dll.

It's downloadable via solution **147212**

This chapter identifies areas in the portingset that will not be supported in the future.

bdbpre/ bdbpost option `-q`

The '`-q`' option has been identified as a redundant and confusing option. The `-E` and `-O` option deliver the same functionality. Therefore the `-q` option is deprecated and will not be supported in portingsets build after 2005.

C-API

In the past the C-API was provided as a mechanism to interface with the ERP environment. As SSA® TA OpenWorldX is the successor for this interface the C-API is deprecated. Support for this interface will end by December 2005.

