

BAAN IVc

Porting Set 6.1c.05 Release Notes

A publication of:

Baan Development B.V.
P.O.Box 143
3770 AC Barneveld
The Netherlands

Printed in the Netherlands

© Baan Development B.V. 2000.
All rights reserved.

The information in this document is subject to change without notice. No part of this document may be reproduced, stored or transmitted in any form or by any means, electronic or mechanical, for any purpose, without the express written permission of Baan Development B.V.

Baan Development B.V. assumes no liability for any damages incurred, directly or indirectly, from any errors, omissions or discrepancies between the software and the information contained in this document.

Document Information

Code:	P3163A US
Group:	Product Information
Edition:	A
Date:	June, 2000

Table of contents

1	Porting set contents	1-1
2	To install the porting set	2-1
	What is a porting set?	2-1
	Installation description	2-1
	<i>To prepare the DEC Unix system for installation</i>	2-2
	<i>To prepare Triton3.x, BAAN IVa, or BAAN IVb for installation (UNIX only)</i>	2-3
	<i>Installation in a UNIX environment</i>	2-4
	<i>Installation in a Windows NT environment</i>	2-7
3	Informix software requirements	3-1
	Informix Dynamic Server	3-1
	Informix I-Connect	3-1
4	Informix Level 2 related topics	4-1
	Informix Level 2 support	4-1
	Required workaround for L2 mode	4-2
	To migrate your database from Level 1 to Level 2	4-2
	Do not use KEYSTART optimizations in Informix 9.20 or later	4-2
5	To perform a fresh installation of BAAN IVc with Informix 7.31 on Intel-NT 4.0	5-1
	Workaround to install BAAN IVc on Informix 7.31/NT	5-1
	Workaround for Informix 7.31 on Intel-NT	5-3
6	Oracle-related topics	6-1
	Expand the shared library search path	6-1
	Necessary actions for existing Oracle8 users	6-1
	Supported Oracle 8.1 versions per OS-type	6-2
	Migration from Oracle7 to Oracle8	6-3
	Oracle8 support for Triton, BAAN IVa and BAAN IVb	6-3
7	DB2-related topics	7-1
	DB2 not shipped on Sparc_Solaris	7-1
	Use latest DB2 fixpacks	7-1
	DB2V6.1 on AIX	7-1

8	Other important remarks, known problems and workarounds	8-1
	Java VM Integration enabling	8-1
	New directories in 6.1c.05	8-1

About this document

This document contains last minute release information about the Baan porting set 6.1c.05. The porting set provides bug fixes for reported problems and new functionality like Oracle8i support and Informix Level 2 support.

NOTE:

In June 2000, Baan decided not to release this porting set for usage with Oracle8i on Windows NT. The reason is that no full install medium was shipped, so a fresh install with Oracle8i is not possible. Furthermore, Baan is not able to perform a proper migration from Oracle8 to Oracle8i in an existing Windows NT installation, and reconnect to BAAN IV. For more details, refer to Chapter 6.

Porting set 6.1c.05 provides a new version of the Oracle database driver that supports Oracle8i versions.

Porting set 6.1c.05 provides a version of the Informix database driver that can run in one of two modes: Level 1 or Level 2. For more information on Level 1 and Level 2, refer to the *BAAN IVc Informix Database Driver Technical Reference Manual* (U7265A US).

For information on the installation of the Informix Dynamic Server and BAAN IVc, refer to *Installation Guide for INFORMIX on Microsoft Windows NT* (U7018I US) or *INFORMIX Installation for BAAN IV (UNIX)* (U7029A US).

These release notes include the following chapters:

- Chapter 1, “Porting set contents,” lists the contents of the porting-set distribution CD-ROM.
- Chapter 2, “To install the porting set,” provides installation instructions for the porting set.
- Chapter 3, “Informix software requirements,” describes the Informix software requirements for this porting set.
- Chapter 4, “Informix Level 2 related topics,” describes Informix Level 2 related topics.
- Chapter 5, “To perform a fresh installation of BAAN IVc with Informix 7.31 on Intel-NT 4.0,” describes how to perform a fresh installation of BAAN IVc with Informix 7.31 on Intel-NT 4.0
- Chapter 6, “Oracle-related topics,” describes Oracle-related topics.
- Chapter 7, “DB2-related topics,” describes DB2-related topics.

- Chapter 8, “Other important remarks, known problems and workarounds,” describes other known problems and workarounds.

1 Porting set contents

The following directories and their respective contents are on the distribution CD-ROM:

- The Documents directory contains the PDF version of these release notes.
- The Alpha directory contains the setup files for the 6.1c.05 porting set for Microsoft Windows on Dec Alpha architecture.
- The I386 directory contains the setup files for the 6.1c.05 porting set for Microsoft Windows on Intel architecture.
- The Unix directory contains subdirectories for the various hardware or UNIX operating system combinations. In each <hardware>/<operating system> subdirectory you will find a compressed tar archive that contains the porting set.
- The BW directory contains the Baan Windows client for machines with Intel and Dec Alpha architecture. The subdirectories are sorted on <language>/<platform>.
- The Baan4b directory contains updates that must be installed first if you are running BAAN IVb.
- The Baan4a directory contains updates that must be installed first if you are running BAAN IVa.
- The Triton3x directory contains updates that must be installed first if you are running any Triton 3x version.
- The Oracle8 directory contains updates that must be installed if you want to use Oracle8 or Oracle8i in a Triton3.1, BAAN IVa or BAAN IVb environment.

2 To install the porting set

What is a porting set?

A porting set is a set of binaries that are operating system dependant. It is the layer between the operating system and the application software. Baan regularly releases a new porting set. A mailfix number recognizes every modification made in the porting set.

Every porting set has a port number. Initially, all binaries have the same port number. If a fix is made on a binary before the next porting set is delivered, that binary will have another port number. For example, a port number for HP binaries can be PA.1021, but the Informix driver `inf_srv6.1` that is modified after the release date can have port number PA.1123.

Installation description

Before you start, first read Chapters 3, 4, 5, 6, or 7 (dependant on your database) and then Chapter 8.

Which of the following sections you must follow, depends on your software environment:

- “To prepare Triton3.x, BAAN IVa, or BAAN IVb for installation (UNIX only)”

If you want to install this porting set in either a Triton3.x, BAAN IVa, or BAAN IVb environment on a UNIX system and you have not previously installed porting set 6.1c.04, 6.1c.04.01 or 6.1c.04.02, you must first install some updates. This section describes how to do this.

- “Installation in a UNIX environment”

If you want to install this porting set in a BAAN IVc environment on a UNIX operating system.

- “Installation in a Windows NT environment”

If you want to install this porting set on a Windows NT operating system.

NOTE:

This porting set version must not be used for a new installation, as it is only a bug fix release.

To prepare the DEC Unix system for installation

To avoid problems, Baan used a newer version of the compiler (the 6.n compiler) for the porting set for DEC Unix. In some cases (this depends on the current version of your operating system, as described in the following sections) you must install a patch in your operating system.

NOTE: If you plan to use the Bshellxma you must install the patch. In all other cases, Baan recommends you to install the patch.

Code generated by the version 6.n compiler requires a newer version of the C++ Run-Time library (libcxx) than is provided by Compaq Tru64 UNIX versions earlier than 4.0F.

Compaq C++ on Compaq Tru64 UNIX version 4.0F or later

On Compaq Tru64 UNIX 4.0F or later, the version of libcxx.so that is required for use with Compaq C++ version 6.n is installed by the operating system; no special actions are required.

Compaq C++ on DIGITAL UNIX version 4.0E or earlier to link and run programs

On version 4.0E or earlier, you must install the following subset from the Compaq C++ version 6.n kit before you can link or carry out programs:

Compaq C++ Run-Time Library (libcxx) for DIGITAL UNIX V4.0E and earlier

If you attempt to link code generated by Compaq C++ version 6.n before you install the compiler or this subset, the link can fail because of unresolved symbols.

You must also install this subset (or the compiler kit) on any version 4.0E or earlier system on which you want to carry out code generated by Compaq C++ version 6.n. If you attempt to carry out a program without having installed the subset or compiler, the image activator displays error messages about unresolved symbols.

NOTE: You can install the libcxx subset without installing the base compiler subset. If you need this libcxx., you can order it from Compaq and install it. You can also get these libraries at:

ftp://ftp.support.baan.com/updates/port/DEC_LIB/CXXREDIST621V01.tar

To prepare Triton3.x, BAAN IVa, or BAAN IVb for installation (UNIX only)

If you install porting set 6.1c.05 on Triton3.x, BAAN IVa or BAAN IVb in a UNIX environment, and you have not previously installed porting set 6.1c.04, 6.1c.04.01 or 6.1c.04.02, you must first perform the relevant procedure described in this section.

Triton3.x

The updates that you need for a Triton3.x environment before you install the 6.1c.05 porting set, can be found in the \Triton3x directory on the porting set distribution CD-ROM.

Take the following steps:

- 1 Import the dump file, 75320.dmp, with Baan session ttiex1284m000.
- 2 Run the Patch object (ttiex3226m000) session after error solving. Use the following settings:
 - Standard: YES
 - Package: tt
 - Object: odllshell
- 3 Copy bic_global to \$BSE/include6.1.
- 4 When you compile your own objects, copy the file, bic_audlib, to \$BSE/include6.1.

Proceed to “Installation in a UNIX environment” to complete the porting set installation.

BAAN IVa

The updates that you need for a BAAN IVa environment before you install the 6.1c.05 porting set, can be found in the \Baan4a directory on the porting set distribution CD-ROM.

Take the following steps:

- 1 Import the dump file, 75320.dmp, with Baan session ttiex1284m000.
- 2 Run the Patch object (ttiex3226m000) session after error solving. Use the following settings:
 - Standard: YES
 - Package: tt
 - Object: odllshell

- 3 Copy the file, bic_global, to \$BSE/include6.1.
- 4 When you compile your own objects, copy the file, bic_audlib, to \$BSE/include6.1.

Proceed to “Installation in a UNIX environment”, to complete the porting set installation.

BAAN IVb

The updates that you need for a BAAN IVb environment before you install the 6.1c.05 porting set, can be found in the \Baan4b directory on the porting set distribution CD.

Take the following steps:

- 1 Import the dump file, 75320.dmp, with Baan session ttiex1284m000.
- 2 Run the Patch object (ttiex3226m000) session after error solving. Use the following settings:
 - Standard: YES
 - Package: tt
 - Object: <all>
- 3 Copy the file, bic_audlib, to \$BSE/include6.1.

Proceed to “Installation in a UNIX environment” to complete the porting set installation.

Installation in a UNIX environment

If you want to install this porting set in an Informix environment, first review Chapters 3 and 4 of these Release Notes.

NOTE: This procedure assumes Baan/Triton is ready for this update. If you are using Triton3.x, BAAN IVa or BAAN IVb, you must have completed the procedure in “To prepare Triton3.x, BAAN IVa or BAAN IVb for installation (UNIX only)” earlier in this chapter.

BAAN IVc environments do not need the updates mentioned in the previous section before you install the 6.1c.05 porting set.

The following procedure is technical in nature, and therefore you must read it carefully before you perform the procedure or ask your system administrator to perform the installation.

The new porting set must be installed as follows:

- 1 Log on as user **root**.
- 2 Check if all users have logged off by typing the UNIX command:

```
ps -ef |grep bshell
```

If the **grep** command does not return a bshell entry, no one is logged on anymore.

- 3 Open the directory \$BSE/etc, and stop Triton or Baan by carrying out the command:

```
./rc.stop
```

- 4 Stop the license daemon (if not stopped by the rc.stop, displayed in the "stop-information") by carrying out the command licmon6.1 -k.
- 5 Transfer the compressed tar archive that corresponds with your hardware and operating system from the Unix directory on the CD-ROM to an empty temporary directory on your UNIX system.

NOTE:

You must possibly use a machine with a Microsoft Windows operating system to read the CD-ROM and transfer the dump to a UNIX system because the files on the CD-ROM are stored on a Joliet file system.

- 6 Extract the files from the compressed tar archive to the temporary directory on the UNIX system:

```
# cd <path>
# compress -d *
# tar xvf *
```

where <path> is the temporary directory to which you copied the compressed tar archive that contains the porting sets.

- 7 Remove the tar archive from the temporary directory on the UNIX system:

```
# cd <path>
# rm *.tar
```

where <path> is the temporary directory to which you copied the compressed tar archive that contains the porting sets.

- 8 Make a backup of all environment directories that are updated if you install the porting set. Carry out the **ls** command on the temporary directory to see a list of directories that will be updated:

```
# cd <path>
# ls
```

where <path> is the temporary directory to which you copied the compressed tar archive that contains the porting sets.

- 9 Copy all files from the temporary directory to the TRITON software, or Baan software environment directory:

```
# cd <path>
# cp -r -p * ${BSE}
```

where <path> is the temporary directory to which you copied the compressed tar archive that contains the porting sets.

NOTE:

The syntax of the **cp** command can vary the different UNIX flavors. In this example above, the **-r** option will copy files recursively and the **-p** option will preserve permissions while copying. Refer to your system documentation for the correct **cp** syntax.

- 10 To ensure that all the permissions are correct, you must run the binperm6.1 script. This script automatically corrects all the permissions.

Go to the directory \$BSE/bin and carry out the following command:

```
sh binperm6.1 .
```

- 11 Generate a new \$BSE/lib/shm_param file. To do this:
 - Rename the old one to have a backup for the old porting set:

```
mv shm_param shm_param.old
```

- Generate a new file:

```
$BSE/bin/shmvalues6.1>$BSE/lib/shm_param
chown bsp:bsp $BSE/lib/shm_param
```

- 12 Remove the file \$BSE/lib/tbase/tbase_open (if you are using tbase(tp)database). When you run rc.start this file is recreated.
- 13 If you install porting set 6.1c.05 on BAAN IVb and earlier versions (including all Triton3.x versions), you must rename the following files:
 - audit_srv6.1 to audit_srv_c_6.1
 - audit_srv_b_6.1 to audit_srv6.1
 - taudit6.1 to taudit_c_6.1
 - taudit_b_6.1 to taudit6.1

- 14 Change the directory to \$BSE/etc and start Baan by carrying out the following command:

```
./rc.start
```

Perform a final test (for example, start a Baan session) before the system is released to users.

Installation in a Windows NT environment

Installation notes

Review the following notes and take actions where needed:

- If you use a Windows NT locale that is not US English, you must use solution 75981.
- Instructions about conversion from MS SQL Server 6.5 to 7.0 and the conversion guide can be found in solution 19805.
- From BAAN IVc4, Baan will install directly on SQL 7 Enterprise Edition. (applies to fresh installations). If you have a master CD-ROM of BAAN IVc4 that does not support installation directly on SQL 7 EE, request the latest master BAAN IVc4 CD-ROM.
- If you want to upgrade from an older version of the porting set, you can experience read.tt.par and other errors, after actions such as converting to runtime in Maintain User Data, due to missing (new) DLLs. Install solution 14949.
- Install solution 75365 to enable new Job Daemon functionality.

Installation procedure

Before you install this new porting set verify that:

- No one is logged on to Baan.
- No long-time running Baan jobs are active.

To install this new porting set, take the following steps:

- 1 Log on to the Windows NT Server that runs Baan.
- 2 Stop the BaanJobDaemonService, and note the Startup settings of the BaanJobDaemon service. To stop the BaanJobDaemon service, select **Control Panel**, then **Services**, select **BaanJobDaemon service**, and click **Startup**.

- 3 Start the Task Manager, and click the **Processes** tab. Check if there are still ntbsHELL.exe processes are still running:
 - If a ntbsHELL.exe process is running, check if everybody is logged off of Baan.
 - If no one is logged on to Baan and any ntbsHELL.exe processes are still running, select them and click **End Process** to stop these processes.
 - Check if any database driver processes are still running:

for Informix:	inf_srv.exe
for Oracle:	ora7_srv.exe (version 7) ora8_srv.exe (version 4)
for MS SQL Server:	msql_srv.exe (version 6.5) msql7_srv.exe (version 7.0)

If any Baan database driver processes are running, stop them by selecting the process and click **End Process** to stop them.
 - Check if any other Baan processes are still running, such as BW, BECS, and Baan NT Manager.
- NOTE:** The Baan NT Manager is the benttool process.

If any Baan processes are still running, close these programs. If this is not possible, select a process and click **End Process** stop these processes.
- 4 Close the Event Viewer, if open, before you proceed.
- 5 Copy the current %BSE%\bin directory to %BSE%\bin.old
To do this, you can select the folder bin, and copy and paste so you get a copy of folder bin, with the name Copy of bin (rename this folder to bin.old).
- 6 Run the setup.exe program from folder I386 on the distribution CD-ROM.
- 7 When the **Welcome** dialog box appears, click **Next**.
- 8 When the **Software Licence Agreement** dialog box appears, click **Yes**.
- 9 When the **Select Environment** dialog box appears, you have two options:
 - **Install new environment.** If you choose to do this, select this option, type in the name you wish to use, and proceed with the installation.

- **Select existing environment.** From porting set 6.1c.03 onward, multiple environments are supported. Therefore, each environment has its own name. If you are installing over a porting set older than 6.1c.03, registry entries are added to get support of multiple environments, and the current Baan environment will get the name **Bse**. In this case, select the environment **Bse**. If you are installing over porting set 6.1c.03 or later, simply select the environment you are using to update your current environment with this new porting set.

Once you make your choice, click **Next**.

NOTE

If a BSE is not detected by the setup program:

- Ensure a BW.exe is present in the %BSE%\bin directory. If not, put one there.
- If the previous step was unsuccessful, do not proceed with the porting set installation and call Baan Support.

- 10 When the **Setup Information** dialog box appears, check if all the information is correct. Verify the environment name and the target directory. If you wish to make a change, click **Back** until you reach the desired dialog box, make the changes, then click **Next** to return.
- 11 Click **Next** to copy files, create folders and icons, and complete the installation as prompted by the installer.
- 12 Once the installation has completed, check if the Baan services have started again. These are:
 - BaanLicensing Service.
 - BaanLogic Service.
 - BaanSharedMemory Service.

Also, if used, start the BaanJobDaemon Service again.

NOTE:

Because the BaanJobDaemon Service is reregistered by the setup of the porting set, you must check the configuration settings of the BaanJobDaemon Service (**Control Panel>Services>BaanJobDaemon service>Startup**). Reset the settings. Remove **Application lock** on the Job Daemon (log on to Baan and run session ttstpdellocks) and restart the BaanJobDaemon service.

- 13 People can now log on to Baan again.

NOTE:

If you are running Baan in an Client-Server mode (separate Application Server and Database Server), the setup procedure contains some additional steps; for example, you are asked to supply the name of the other server and some log on information.

3 Informix software requirements

If you intend to use the Informix database driver provided in this porting set, you must meet the following software requirements:

Informix Dynamic Server

Informix Dynamic Server version 7.24 (UC1 or TC1) or later is required to run the database driver in Level 1 mode.

Informix Dynamic Server version 7.31 (UC1 or TC1) or later is required to run the database driver in Level 2 mode.

Informix I-Connect

Informix I-Connect version 2.20 (UC1 or TC1) or later is required. If you have an older version of I-Connect, you must upgrade.

A copy of I-Connect 2.20 (or later) is provided on the Baan Support Web site. Hopefully, this helps you to quickly get the right I-Connect version. Check the following table for the available I-Connect versions:

Porting set Platform/OS version	Informix I-Connect version
DEC_ALPHA/DIG_UX4.0D	connect_2_20_FC3_dec.cpi.Z
IBM_RS6000/AIX4.3	connect_2_20_UC3_ibm.tar.Z
HP9000_PA_RISC/HPUX10.20	connect_2_40_FC1_HP64.cpi.Z
HP9000_PA_8000/HPUX10.20	connect_2_20_UC3_hp32_10_20.cpi.Z
SEQUENT_INTEL/DYNIX_PTX4.4.2	connect_2_30_UC1_seq.cpi.Z
SUN_SPARC/SOLARIS2.5.1	connect_2_20_UC3_SOL.tar.Z
I386/NT4.0	connect_2_30_TC1_NT.exe
SNI_MIPS/ReliantUNIX_5.43	connect_2_30_UC1_sni.pkg.Z

For new installations, install I-Connect after you install the Informix Dynamic Server.

To determine the version of your I-Connect installation, take the following actions:

- In UNIX, use the following command:

```
ifx_getversion connect
```

- In Windows NT, select **Start>Programs>INFORMIX-Connect>SetNet32**. Click the **About SetNet32** tab. Both the IDS and I-Connect versions appear, such as:

```
7.31 2.20 TC1
```

4 Informix Level 2 related topics

Informix Level 2 support

In the following table you can see where Informix L1 and/or L2 is supported:

Porting set Platform/OS-version	L1/L2 support
DEC_ALPHA/DIG_UX4.0D	L1 and L2
IBM_RS6000/AIX4.1.5	L1
IBM_RS6000/AIX4.3	L1 and L2
HP9000_PA_RISC/HPUX10.20	L1 and L2
HP9000_PA_8000/HPUX10.20	L1 and L2
SEQUENT_INTEL/DYNIX_PTX4.4.2	L1 and L2
SUN_SPARC/SOLARIS2.5.1	L1 and L2
I386/NT4.0	L1 and L2
ALPHA/NT4.0	L1 and L2
SNI_MIPS/ReliantUNIX_5.43	L1 and L2
SGI_MIPS/IRIX6.5	L1
SCO_UNIX_INTEL/3.2.5	L1
UNIXWARE_INTEL/2.1.2	L1
AT_T_INTEL/5.4.3	None

Required workaround for L2 mode

If you will use the driver in Level 2 mode, perform this procedure on the machine where the Informix database driver will be run.

- 1 After you install the porting set, make the following change to the **db_resource** file with a text file editor:

```
inf_use_prepare_cache:0
```

In Windows NT, db_resource is located in the directory %BSE%\lib\defaults, where %BSE% refers to the directory where the BAAN IVc software environment is installed.

In UNIX, db_resource is located in the directory \$BSE/lib/defaults where \$BSE refers to the directory where the BAAN IVc software environment is installed.

- 2 You can now run the Informix database driver in Level 2 mode.

To migrate your database from Level 1 to Level 2

To migrate your Informix database from Level 1 to Level 2 after the installation of this porting set, refer to *BAAN IVc Informix Database Driver Technical Reference Manual* (U7265A US).

Do not use KEYSTART optimizations in Informix 9.20 or later

Do not use KEYSTART optimizations in Informix 9.20. In Informix 9.20 UC4, this problem will be solved by Informix. If you put KEYSTART optimizations on, you can experience **error –874**.

5 To perform a fresh installation of BAAN IVc with Informix 7.31 on Intel-NT 4.0

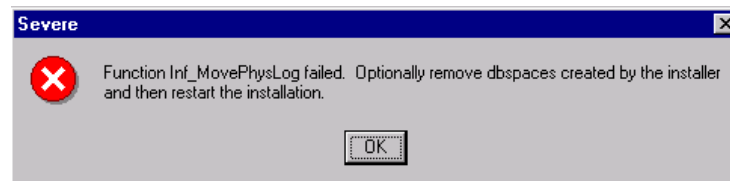
Although the 6.1c.05 porting set must nearly always be installed on an existing installation of BAAN IVc, you must possibly perform a fresh installation. Then you must follow the steps described in this chapter.

Note that you must follow the workarounds described in the following sections during the installation of the BAAN IVc software.

Workaround to install BAAN IVc on Informix 7.31/NT

A known problem occurs when you install BAAN IVc4 with Informix Dynamic Server (IDS) version 7.31. This is verified on 7.31 TC2. If your IDS installation is any other 7.31 TCx, and this problem occurs, use the following workaround.

- 1 Perform the IDS installation as described in *BAAN IVc Installation Guide for Informix on Windows NT* (U7018I US).
- 2 Make sure you select I-Connect for the installation when you install IDS. Do not install I-Connect as described in the manual.
- 3 Install BAAN IVc as described in *BAAN IVc Installation Guide for Informix on Windows NT* (U7018I US). Within 5 to 10 minutes the installation will fail with the following timeout error:



- 4 Click **OK**, then click **OK** again to exit the installation.
- 5 Delete the directory you specified for Baan during the Baan installation, for example, **BAAN40c**.
- 6 Run **regedit**. Find the name of the Baan directory (for example, BAAN40c) located in this registry section:
HKEY_LOCAL_MACHINE>Software>Baan.

- 7 Delete the registry entry that has the name of the Baan directory (for example, BAAN40c).
- 8 Double-click **Control Panel**, and then open **Services**. Click on the **Informix Dynamic Server** service, and click **Start**. Make sure it is also set to **Automatic**.
- 9 Reinstall BAAN IVc as described in *BAAN IVc Installation Guide for Informix on Windows NT* (U7018I US).
- 10 When the **Enter Informix Parameters** dialog box appears, change the **Baan database dbspace** value to a name different than the one used during the previous BAAN IVc installation. For example, if you used the default setting of **baandb.dbs**, change it to **baandb1.dbs**.
- 11 Click **Next**. The installer displays the message “Dbspace baandb_dbs exists. Do you want to remove and recreate it?” The value **baandb_dbs** is the default name.
- 12 Click **Yes**. The next message will be “Dbspace baandb_plog exists. Do you want to reuse the existing dbspace?” The value **baandb_plog** is the default name.
- 13 Click **Yes**. Error message 391 appears. Click **OK** to leave the installation, and add the following entry to the %BSE%\lib\defaults\db_resource file:

`inf_init:04425`
- 14 Restart the installation of BAAN IVc, and continue with the steps described in “Workaround for Informix 7.31 on Intel-NT.”

NOTE: During the update of the porting set you can get 4 or 5 messages about the MMC that cannot be installed. You can ignore these messages.

Workaround for Informix 7.31 on Intel-NT

The following variables described must always be set, regardless of the migration.

- 1 On the **Start** menu, click **Settings**.
- 2 Choose **Control Panel**.
- 3 Double-click **System**.
- 4 Click **Environment**.
- 5 Add the system variable **BSE** with the correct value.
- 6 Click **Set**, and then **Apply**.
- 7 Select the variable **Path**, and add the correct directory defined by **%BSE%\bin** to this value.
- 8 Click **Set**, and then **Apply**.
- 9 Add the variable **INFORMIXSERVER** with value **ol_system_name** to the System Variables.
- 10 Click **Set**, followed by **Apply**.
- 11 Restart the system.
- 12 Log on as user **baan**, start the session ttaad4110m000, and define the following parameters:
 - Clear the **System name** field for Database 001.
 - Select **Informix** in the **Database Type** field.
 - Add string
"INFORMIXDIR=%Informixdir%,INFORMIXSERVER=%ol_systemname%,INFORMIXSQLHOSTS=\\SYSTEMNAME" in the parameter field.
 - Select the **Audit Trail** check box.
- 13 Save and exit the session.
- 14 On the **Special** menu, select **Convert to runtime**.
- 15 Repeat steps 12 through 14 for database 002 (clear the **Audit Trail** check box).
- 16 Run session ttdba0120m000.
- 17 Click **Maintain DB Group** and insert a new database with database group name **baandb**.

- 18 Select **Externally** for **Create Group**.
- 19 Click **Database Groups**, and click **Create and dump**.
- 20 Click **Yes** if you are asked if you want to delete the record.
- 21 Delete the group named, for example, **baandbc4_2ss70**.
- 22 Run the session ttdba0110m000.
- 23 Choose database 001, and click **OK**.
- 24 On the **Special** menu, click **Dump users**.
- 25 Save and close all sessions and exit and restart BAAN IVc.
- 26 Start the MS-DOS prompt.
- 27 Change directories to the %BSE%\lib directory.
- 28 Type the following case-sensitive command on the command line: **edit licence6.1**.
- 29 Type the BaanERP server name, for example, **srvnldptg5**.
- 30 Save and exit the editor.
- 31 Restart the system.

6 Oracle-related topics

Porting set 6.1c.05 provides a new version of the Oracle database driver that supports Oracle8i versions. Check the Product Information Database (PID) for supported Oracle versions for each hardware platform. For more information, refer to the *BAAN IV Oracle Database Driver Technical Reference Manual* (U7155B US).

Expand the shared library search path

During the installation on UNIX systems of Oracle 8.x, you must sometimes expand the shared library search path by adding the \$ORACLE_HOME/lib directory. If the shared library search path is not extended, Oracle tools such as sqlplus cannot find the used shared Oracle libraries.

Note that the variable that contains the shared library search path has different names on different platforms.

EXAMPLE:

On Fujitsu Siemens Reliant Unix, you must specify the following for Oracle 8.0.5:

```
LD_LIBRARY_PATH=$LD_LIBRARY_PATH:/home/CDS++/lib:/home/oracle/8.0.5/lib
```

Necessary actions for existing Oracle8 users

Existing Oracle8 users must take some actions after they upgrade the porting set.

Specify ora_column_format

Specify the ora_column_format:7 resource value in the \$BSE/lib/defaults/db_resource file to force the new Oracle8 driver to comply with Oracle7 data dictionary constraints instead of Oracle8 constraints. (If you do not specify this, you will experience error BDB_512). This applies both to UNIX and NT.

The old Oracle8 driver used the Oracle7 constraints. Since the Oracle8i project, the Oracle8 constraints are used by default, which causes some inconveniences for existing installations.

Check if \$BSE/lib/ora/oracle_home exists

This only applies to UNIX installations. After the installation is complete, check if \$BSE/lib/ora/oracle_home exists, if not, run the ora_update script (located in \$BSE/bin) to generate it. If you perform an official upgrade, the directory must exist. If you must replace the porting set (with porting set 6.1c.05), you must take notice.

Supported Oracle 8.1 versions per OS-type

NOTE:

In June 2000, Baan decided not to release this porting set for usage with Oracle8i on Windows NT. The reason is that no full install medium was shipped, so a fresh install with Oracle8i is not possible. Furthermore, Baan is not able to perform a proper migration from Oracle8 to Oracle8i in an existing Windows NT installation, and reconnect to BAAN IV. Baan is working on this. As soon as a proper way is available for a migration from Oracle8 to Oracle8i on NT, Baan will put a solution on the support web.

UNIX

Baan supports Oracle 8.1.5 (and later) for all UNIX platforms.

Support for Oracle 7.3.4 and 8.0.X remains unchanged.

Windows2000

Oracle 8.1.6 or later is required for the Windows 2000 platform. Oracle does not support earlier versions.

Oracle 7.3.4 and 8.0.X are not supported by Oracle, and therefore neither by Baan.

Windows NT

Support for Oracle 7.3.4 and 8.0.X remains unchanged.

Baan advises Oracle 8.1.6 or later, as the testers received some severe Oracle errors on NT during tests with 8.1.5. These errors have not yet occurred with the Oracle 8.1.6 or 8.0.X versions.

Baan received the following error:

```
ORA- 00022, "invalid session id; access denied"
// *Cause: Either the session specified does not
           exist or the caller doesn't have the
           privilege to access it.
```

```
// *Action: Specify a valid session ID that you
           have privilege to access, ie, either
           you owns it or you have CHANGE_USER
           privilege.
```

Migration from Oracle7 to Oracle8

Oracle has expressed its intention to drop support for Oracle 7. Therefore, you must consider a migration to an Oracle 8 version. More details can be found in the following manuals: U7172A US or U7172B US.

As mentioned in this document, two methods are available for migration from Oracle7 to Oracle8:

- The Baan method: make a sequential dump and use Bdbpost. This will always work, but it is a time-consuming process.
- Use the Oracle method with Oracle tools. This is much faster than the Baan method.

Although the 6.1c.05 porting set is nearly always installed on an existing installation of BAAN IVc, you must possibly perform a fresh installation. You must then use an Oracle8 version.

Oracle8 support for Triton, BAAN IVa and BAAN IVb

Up to porting set 6.1c.04.02, only BAAN IVc users can use Oracle8.0. Due to the fact that Oracle will drop support for Oracle 7, Baan had to define a solution for older Baan software releases.

The following solutions are available:

TRITON 2.2d and TRITON 3.0: Situation unchanged, if needed use consultancy to solve the problem.

TRITON 3.1 through BAAN IVa and BAAN IVb: Oracle8 (both Oracle 8.0 and Oracle 8.1.x) support is built in with a licensing mechanism. For more details, contact Baan's Customer Services & Support.

Take the following steps:

- Install a patch on your system if you have not done so yet(refer to solution 102522, which is printed later in this section).
- Produce a license key request.
- Get a new license key from Baan.
- Validate your system with the new key.

NOTE: If you request a new license key, make sure you select both Oracle7 and Oracle8. If you only request Oracle8, you cannot perform a proper migration from Oracle7 to Oracle8. After validation of your system with the new license key, you must be able to run both Oracle7 and Oracle8.

SOLUTION 102522 for TOOLS VERSION(S):6.1b, B40a, B40b

If you carry out program ocorora8, this performs the following actions to enable Oracle8 in the Baan environment:

- Searches the Commercial Functions Delivered table (tttiex300) for Oracle8.
- If Oracle8 is found the program will stop with the message Oracle8 already exists. So, in this case no further actions are necessary.
- When no Oracle8 is found, the entry will be inserted in the Commercial Functions Delivered table and the Enumerates and Sets tables. Then the program finishes with the message, Convert domain changes to runtime dictionary.

After you run ocorora8, you must carry out ttadv5213m000 Create Runtime DD for tools with the **Also Dump Data Definitions** check box selected.

Before you run this session, all users must be disconnected from the Baan environment. After the conversion to runtime, Oracle8 is available in the Baan environment.

PATH NAME IN DIAL-UP DIRECTORY/WEB SITE:

The following supported VRC's are based on the Baan standard derivation structures.

If your Current VRC is:

3.1_b, 3.1_b2, 3.1_b3, 3.1_b4, 3.1_b5, 3.1_b6:

<ftp://ftp.support.baan.com/updates/61b/102522std.dmp>

or on this CD: \Oracle8\triton\102522std.dmp

B40_a1, B40_a2:

<ftp://ftp.support.baan.com/updates/B40a/102522std.dmp>

or on this CD: \Oracle8\baan4a\102522std.dmp

B40_b1, B40_b2, B40_b3, B40_b4, B40_b5:

ftp://ftp.support.baan.com/updates/B40_b/102522std.dmp

or on this CD: \Oracle8\baan4b\102522std.dmp

COMMENTS:

Read solution 100017 for installation instructions.

7 DB2-related topics

The following sections are important with regard to DB2 support in this porting set.

DB2 not shipped on Sparc_Solaris

Although you can find the DB2 database driver for Sparc_Solaris in the porting set, you must not use it. A severe error still occurs on the Sparc_Solaris Operating system, both on SUN and Fujitsu Siemens hardware. Baan is working on the problem, but has not yet resolved it.

Use latest DB2 fixpacks

During tests, problems arose that were solved by installing the newest DB2 fixpacks. Check with IBM for the latest DB2 fixpacks for your hardware platform. This information can be found at:

<http://www-4.ibm.com/software/data/db2/db2tech/indexsvc.html>

DB2V6.1 on AIX

Although this porting set is not primarily meant for new installations you can encounter the following problems if you perform a fresh installation:

Initialization of the database in ottiex1289 failed, though the environment parameter to connect to the right instance (DB2INSTANCE) was set, as the script ottiex1289 checks to see if the parameter DB2V5INSTANCE is set. When the script detects that this is not the case, it aborts the installation. The parameter DB2V5INSTANCE is not used anywhere.

Workaround: If you escape to the shell before the database initialization session and the install script start, you can use the Baan application.

The Baan database driver is linked with the db2v5 libraries. To work with db2v6, the db2v6 shared libraries must be used, instead of the db2v5 shared libraries. According to the installation notes, this must be possible with the environment variable LIBPATH. Unfortunately this does not work.

Workaround: Create a symbolic link from **/usr/lpp/db2_05_00** to **/usr/lpp/db2_06_01**. Now the database driver finds the correct library and can connect to the database.

WARNING: If both db2v5 and db2v6 are installed on the system, you cannot use this workaround.

NOTE: IBM plans to release a GA-version of DB2V7 by the end of May 2000. The previously mentioned remarks apply to DB2V7 as well.

8 Other important remarks, known problems and workarounds

This chapter provides other important remarks, known problems, and workarounds.

Java VM Integration enabling

In the following table you can see where Java VM Integration (JVMI) is enabled.

Porting set Platform/OS-version	JVMI enabling
DEC_ALPHA/DIG_UX4.0D	Yes
IBM_RS6000/AIX4.1.5	No
IBM_RS6000/AIX4.3	Yes
HP9000_PA_RISC/HPUX10.20	Yes
HP9000_PA_8000/HPUX10.20	Yes
SEQUENT_INTEL/DYNIX_PTX4.4.2	No
SUN_SPARC/SOLARIS2.5.1	Yes
I386/NT4.0	Yes
ALPHA/NT4.0	No
SNI_MIPS/ReliantUNIX_5.43	No
SGI_MIPS/IRIX6.5	No
SCO_UNIX_INTEL/3.2.5	No
UNIXWARE_INTEL/2.1.2	No
AT_T_INTEL/5.4.3	No

New directories in 6.1c.05

In the porting sets with JVMI enabling, Baan introduced two new directories:

- \$BSE/shlib (containing shared libraries).
- \$BSE/java (containing java applications).

NOTE:

Make sure that these directories are copied to your environment. In future releases Baan can ship other libraries and/or java applications that must be installed in these directories.

