



BaanPDM 5.2c SP 3.11 Upgrade Notes



© Copyright 2002 Invensys International B.V. All rights reserved.

The information in this document is subject to change without notice. No part of this document may be reproduced and/or published by print, photoprint, microfilm or audiotape, electronically, mechanically or any other means, or stored in an information retrieval system, without prior permission from Invensys International B.V.

The information in this document shall not constitute and should not be construed as a warranty of any kind with respect to the software described herein. INVENSYS INTERNATIONAL B.V. FURTHERMORE ASSUMES NO LIABILITY FOR ANY DAMAGES INCURRED, DIRECTLY, INCIDENTALLY OR CONSEQUENTIALLY FROM ANY ERRORS, OMISSIONS OR DISCREPANCIES BETWEEN THE SOFTWARE AND THE INFORMATION IN THIS DOCUMENT.

Oracle, SQL*Easy Configuration, and SQL*Plus are trademarks of Oracle Corporation. Informix is a trademark of the Informix Corporation. MS-DOS, MS-SQL Server, Microsoft Windows, Windows 98, Windows 2000, Windows NT, Office, Word, Excel, Project, PowerPoint and Outlook are trademarks or registered trademarks of Microsoft Corporation.

All other product names used may be trademarks of their respective owners.

Table of Contents

BaanPDM Client.....	3
BaanPDM Report Generator.....	3
Baan PDM Database	3
Upgrade From Any Baan PDM 5.2c Service Pack Prior to SP 3.1 ..	4
Upgrade From Baan PDM 5.2c Service Pack 3.1 and Above	5
Vault Server	6
Replace the Workflow Daemon	7
Workflow Daemon Service.....	7
Upgrade the Gateway with Baan	9
For Baan IVc	9
Option I – Full Upgrade	9
Option II – Changes Only	10
For Baan IV c A&D Extension:	11
Option I – Full Upgrade	11
Option II – Changes Only	12
For Baan ERP 5.0b (Grieg):	13
Option I – Full Upgrade	13
Option II – Changes Only	14
For Baan ERP 5.0c (Corelli):	15
Option I – Full Upgrade	15
Option II – Changes Only	16
For Baan IV b:	17

BaanPDM Client

The BaanPDM client patch kit needs to be installed on all client machines. The patch will automatically upgrade all the BaanPDM components that already exist on a machine. Zip files of the BaanPDM patch kits are available in <ftp.c-ark.net/BaanPDM-kits> according to the database version: (enter with ftp program in passive mode or click on the link below):

- For MS SQL 7: [BaanPDM-Patch-5.2c-SQL7.exe](#)
- For MS SQL 2000: [BaanPDM-Patch-5.2c-SQL2000.exe](#)
- For Oracle 7.x: [BaanPDM-Patch-5.2c-Oracle73.exe](#)
- For Oracle 8.0x: [BaanPDM-Patch-5.2c-Oracle80.exe](#)
- For Oracle 8.1x: [BaanPDM-Patch-5.2c-Oracle8i.exe](#)
- For Informix 7.3 and 9.x: [BaanPDM-Patch-5.2c-Informix.exe](#)
- For Informix 7.2: [BaanPDM-Patch-5.2c-Informix72.exe](#)

BaanPDM Report Generator

After installing the new Report Generator, you must delete the files:
%BPDM_R%\Report\localdb\locdb_*.mdb.

Baan PDM Database

Following are instructions that should be carried out in order to upgrade your database from any version of Baan PDM 5.2c to Baan PDM 5.2c SP 3.11. The structure of some of the tables was altered and some new tables/fields were created. The procedure below is designed to make these changes to your database without harming your company PDM data. Nevertheless, it is always recommended to backup your database before you carry out a procedure such as this.

- ☒ **Note:**
If upgrading from a Baan PDM 5.2c SP 3.1 or higher, you will need to use the procedure on page 5 (Upgrade from Baan PDM 5.2c Service Pack 3.1 and Above).

Upgrade From Any Baan PDM 5.2c Service Pack Prior to SP 3.1

The upgrade consists of the following steps:

1. Preparation.
2. SQL commands.
3. Unloading data.
4. System table changes
5. Reloading the data.

1. **Preparing:**

Extract the [Upgrade_52c_311.zip](#) to the service subdirectory of your BaanPDM 5.2c installation (%BPDM_DIR%\service).

2. **SQL commands:**

Open SQL Editor and perform the commands from file

Upgrade_ora.SQL, or **Upgrade_mssql.SQL**, or **Upgrade_inf.SQL**. The file to use depends on your specific database. Ignore any errors.

3. **Unloading a copy of your data:**

Open a DOS window and access the service directory. Run the following commands:

- `loaddb <database connection string>
unload_manuf_data.lst unload`
- `loaddb <database connection string>
unload_doc_doc.lst unload`
- `loaddb <database connection string>
unload_data.lst unload`

4. **System table changes:**

- a. Copy the file **change_tables.bat** to your %BPDM_DIR%\bin directory, and run the following command from there:

- For Oracle Databases: Run the file:
`change_tables.bat <database connection string> <Oracle index table space>`
- For Informix Databases:
`change_tables.bat <database connection string>`
- For SQL Databases: Run the file:
`change_tables.bat <database connection string>`

Ignore error messages. Respond **Yes** to **Continue (Y/N)**.

- b. Copy the file **change_manuf.bat** to your %BPDM_DIR%\bin directory, and run the following command from there:

- For Oracle Databases: Run the file:
change_manuf.bat <database connection string>
<Oracle index table space>
- For Informix Databases:
change_manuf.bat <database connection string>
- For SQL Databases: Run the file:
change_manuf.bat <database connection string>

c. Delete the file **out_file.log** if it exists.

5. Reloading your data back into the new tables:

a. From DOS run the following commands:

- loaddb <database connection string>
load_manuf_data.lst load batch
- loaddb <database connection string> 52C_311.lst
load batch
- loaddb <database connection string>
load_doc_doc.lst load batch
- loaddb <database connection string> load_data.lst
load batch

b. Check the file **out_file.log** to verify that there are no error messages.

Upgrade From Baan PDM 5.2c Service Pack 3.1 and Above

The upgrade consists of the following steps:

1. Preparation.
2. SQL commands.
3. Unloading data.
4. System table changes.
5. Reloading the data.

1. Preparation:

Extract the [Upgrade 52c 311.zip](#) to the service subdirectory of your BaanPDM 5.2c installation (%BPDM_DIR%\service).

2. SQL commands:

Open SQL Editor and perform the commands from file **Upgrade.SQL**. Ignore any errors.

3. Unloading a copy of your data:

Open a DOS window and access the service directory. Run the following commands:

- loaddb <database connection string>
unload_doc_doc.lst unload
- loaddb <database connection string>
unload_data.lst unload

4. System table changes:

- a. Copy the file **change_tables.bat** to your **%BPDM_DIR%\bin** directory, and run the following command from there:

- For Oracle Databases: Run the file:
change_tables.bat <database connection string>
<Oracle index table space>
- For Informix Databases:
change_tables.bat <database connection string>
- For SQL Databases: Run the file:
change_tables.bat <database connection string>

Ignore error messages. Respond **Yes** to **Continue (Y/N)**.

- b. Delete the file **out_file.log** if it exists.

5. Load your data back into the new tables:

- a. From DOS run the following commands:

- loaddb <database connection string> 52C_311.lst
load batch
- loaddb <database connection string>
load_doc_doc.lst load batch
- loaddb <database connection string> load_data.lst
load batch

- b. Check the file **out_file.log** to verify that there are no error messages.

Vault Server

If you already have BaanPDM 5.2c-SP3.7 or higher, it is not necessary to replace the Vault Server. (In SP3.7 a change was made in the Vault Server, therefore if you upgrade to 3.7 or higher you should replace the Vault Server).

To install a new service server do the following:

1. Stop the current VSService from the **Control Panel->Services** window.
2. Install the Vault Server from the BaanPDM installation client kit. User and Password are not required any more to operate the service.
3. Operate the VSService from the **Control Panel->Services**.

Replace the Workflow Daemon

After running the **Patch Installation** restart the Workflow Daemon application.

Workflow Daemon Service

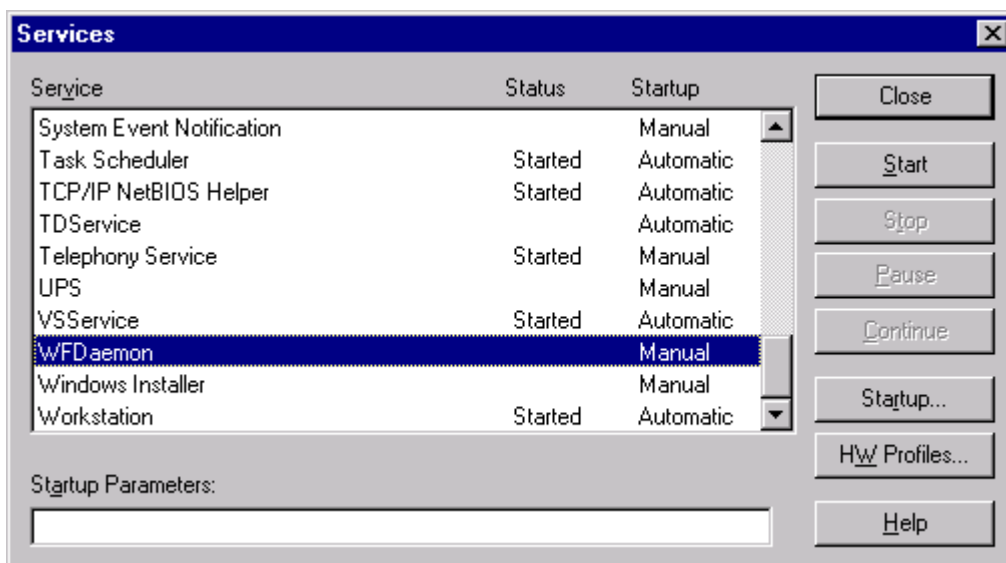
You can replace the Workflow Daemon program with a Workflow Daemon Service.

Please stop the Workflow Daemon program before you start the service. The installation of the Workflow Daemon Service should be done from the BaanPDM installation client kit. During the installation, please select the option to update the System Environment.

BPDM_MBOX

After the Workflow Daemon Service has been installed do the following:

1. Access the **Control Panel → Services**.
2. Select the **WFDaemon** service in the Services dialog window.



3. Click **Startup**. The **Service** dialog box is displayed.



4. In the **Log On As** section of the Service dialog window, select the **This Account** radio button.
5. Select the browser in order to insert a user name with both the following characteristics:
 - The user is a local administrator of this machine.
 - The user can send emails from this machine.

Upgrade the Gateway with Baan

When using **ba** package SP 3.11 in BaanIV or Baan5.0x, you must use the **Gateway.jar** file that was supplied with PDM 5.2c SP3.11. Using an older version of the **Gateway.jar** will cause incompatibility issues.

For Baan IVc

A. Upgrade the BaanPDM client on which the Gateway Load Server runs, and restart the Load Server (simply run the downloaded "patch" on this machine).

B. Upgrade the File Server on the Baan Server by copying the file Gateway.jar as installed above.

C Restart the File Server.

D. Upgrade the ba package in your Baan test/production company.



Note:

*We recommend that the package **ba** ALWAYS be installed in a new package VRC.*

If however you decide to update an existing VRC, before starting the installation make sure you note your current package combination and package VRC!

Option I – Full Upgrade

Install software components:

1. In **Maintain Package VRC's** (ttadv1111m000) add a new VRC. The **Derived from** and **Integration with** fields will be empty.
2. Unzip the zip file located in: [BaanPDM5.2c-BaanIVc.zip](#) to a work directory on your server, such as: \$BSE/ba_files
3. Make sure no user is currently connected to Baan.
4. In **Import Data Dictionary** (ttiex1285m000) add the relevant paths and VRC (page 3-12 in the BaanPDM 5.2 Installation Guide). Uncheck the box to Delete dumps.
5. In **Maintain Packages by Package Combination** (ttaad1121m000) find your package combination, mark the VRC of package **ba**, delete the old VRC and then enter the new one.
6. Run **Rebuild DD**.



Note:

*If you are installing on an existing VRC, you only need to run session **Create Runtime Data Dictionary** (ttadv5210m000) and select to perform the operation for package **ba** only.*

7. Exit from Baan and then login again.

Update database:

Dynamic mapping is an integral part of the Gateway software. Each service pack includes the necessary definitions for out-of-the-box data transfer between PDM and BaanERP. If you have made any changes to the standard mapping, you need to document the changes and backup the tables. You will need to reenter these changes after installation of the standard mapping.

1. Run **Create Table from Sequential Dump** (ttaad4227m000) and **Reorganize Tables** (ttaad4225m000) for your company and package **ba** only (page 3-15 in the BaanPDM 5.2 Installation Guide).
2. Run **Create Tables** (ttaad4230m000) for your company and package **ba** only (page 3-16 in the BaanPDM 5.2 Installation Guide). For a new installation, 10 tables will be created with no data.
3. After the **ba** tables are created for the first time, you must enter data in **Maintain Batch Gateway Work Directory** (baxml0150m000) and **Maintain Gateway Used Company List** (baxml0160m000).
4. If you have customized the Gateway mapping, you must now review your changes and reenter as necessary.
5. If your Baan Company is not in English, you must run session **Copy/Move Language-Dependent Software Components** (ttadv6200m000). For complete instructions see Solution 121584.
- E. If you would like to transfer files from BaanPDM to Item Text, please download the files in: [GtwyBaanIV.zip](#) and follow the instructions in: [GatewayText.doc](#).

Option II – Changes Only

This option is available for customers who already have the **ba** package of BaanPDM 5.2c SP 2.5 installed. Doing this will give you the table changes since SP 2.5 only.

Follow the instructions in "Option I" above, using the files in: [BaanPDM5.2c-Baan4c-Changes.zip](#) instead of those mentioned.

☒ **Note:**

*When running the session **Create tables from Sequential dumps** check the boxes: **Append Table if exists** and **Overwrite duplicate tables from dump**.*

All the changes contained in the dump files you downloaded are outlined in: [Baan4_mapping_changes.xls](#)

- E. If you would like to transfer files from BaanPDM to Item Text, please download the files in: [GtwyBaanIV.zip](#) and follow the instructions in: [GatewayText.doc](#).

For Baan IV c A&D Extension:

When using **ba package SP 3.11 in BaanIV or Baan5.0x**, you must use the Gateway.jar that was supplied with PDM 5.2c SP3.11. Using an older version of the Gateway.jar will cause incompatibility issues.

A. Upgrade the BaanPDM client on which the Gateway Load Server runs, and restart the Load Server (simply run the downloaded "patch" on this machine).

B. Upgrade the File Server on the Baan Server by copying the file Gateway.jar as installed above.

C Restart the File Server.

D. Upgrade the ba package in your Baan test/production company.



Note:

*We recommend that the package **ba** ALWAYS be installed in a new package VRC.*

If however you decide to update an existing VRC, before starting the installation make sure you note your current package combination and package VRC!

Option I – Full Upgrade

Install software components:

1. In **Maintain Package** VRC's (ttadv1111m000) add a new VRC. The **Derived from** and **Integration with** fields will be empty.
2. Unzip the zip file located in: [BaanPDM5.2c-BaanIVcA&D.zip](#) or [BaanPDM5.2c-BaanIVcA&D-min.zip](#) (Please call BaanPDM Support to find out which of the two you need) to a work directory on your server, such as: \$BSE/ba_files.
3. Make sure no user is currently connected to Baan.
4. In **Import Data Dictionary** (ttiex1285m000) add the relevant paths and VRC (page 3-12 in the BaanPDM 5.2 Installation Guide). Uncheck the box to Delete dumps.
5. In **Maintain Packages by Package Combination** (ttaad1121m000) find your package combination, mark the VRC of package **ba**, delete the old VRC and then enter the new one.
6. Run **Rebuild DD**.



Note:

*If you are installing on an existing VRC, you only need to run session **Create Runtime Data Dictionary** (ttadv5210m000) and select to perform the operation for package **ba** only.*

7. Exit from Baan and then login again.

Update database:

Dynamic mapping is an integral part of the Gateway software. Each service pack includes the necessary definitions for out-of-the-box data transfer between PDM and BaanERP. If you have made any changes to the standard mapping, you need to document the changes and backup the tables. You will need to reenter these changes after installation of the standard mapping.

1. Run **Create Table from Sequential Dump** (ttaad4227m000) and **Reorganize Tables** (ttaad4225m000) for your company and package **ba** only (page 3-15 in the BaanPDM 5.2 Installation Guide).
2. Run **Create Tables** (ttaad4230m000) for your company and package **ba** only (page 3-16 in the BaanPDM 5.2 Installation Guide). For a new installation, 10 tables will be created with no data.
3. After the **ba** tables are created for the first time, you must enter data in **Maintain Batch Gateway Work Directory** (baxml0150m000) and **Maintain Gateway Used Company List** (baxml0160m000).
4. If you have customized the Gateway mapping, you must now review your changes and reenter as necessary.
5. If your Baan Company is not in English, you must run session **Copy/Move Language-Dependent Software Components** (ttadv6200m000). For complete instructions see Solution 121584.
- E. If you would like to transfer files from BaanPDM to Item Text, please download the files in: [GtwyBaanIV.zip](#) and follow the instructions in: [GatewayText.doc](#).

Option II – Changes Only

This option is available for customers who already have the **ba** package of BaanPDM 5.2c SP 2.5 installed. Doing this will give you the table changes since SP 2.5 only.

Follow the instructions in "Option I" above, using the files in: [BaanPDM5.2c-Baan4c_AD-Changes.zip](#) instead of those mentioned.

☒ **Note:**

When running the session "Create tables from Sequential dumps" check the boxes: "Append Table if exists" and "Overwrite duplicate tables from dump".

All the changes contained in the dump files you downloaded are outlined in: [Baan4_mapping_changes.xls](#)

- E. If you would like to transfer files from BaanPDM to Item Text, please download the files in: [GtwyBaanIV.zip](#) and follow the instructions in: [GatewayText.doc](#).

For Baan ERP 5.0b (Grieg):

When using **ba package SP 3.11 in Baan5.0b**, you must use the Gateway.jar that was supplied with PDM 5.2c SP3.11. Using an older version of the Gateway.jar will cause incompatibility issues.

Before installing SP 2.11 or newer for Baan5.0b you must verify that you have installed Baan Solution 110022. This Solution was included in Baan5.0b SP11.

A. Upgrade the BaanPDM client on which the Gateway Load Server runs, and restart the Load Server (simply run the downloaded "patch" on this machine).

B. Upgrade the File Server on the Baan Server by copying the file Gateway.jar as installed above.

C Restart the File Server.

D. Upgrade the ba package in your Baan test/production company.



Note:

*We recommend that the package **ba** ALWAYS be installed in a new package VRC.*

If however you decide to update an existing VRC, before starting the installation make sure you note your current package combination and package VRC!

Option I – Full Upgrade

Install software components:

1. In **Maintain Package VRC's** (ttadv1111m000) add a new VRC. The **Derived from** and **Integration with** fields will be empty.
2. Unzip the zip file located in: [BaanPDM5.2c-Baan5.0b.zip](#) to a work directory on your server, such as: \$BSE/ba_files
3. Make sure no user is currently connected to Baan.
4. In **Import Data Dictionary** (ttiex1285m000) add the relevant paths and VRC (page 3-12 in the BaanPDM 5.2 Installation Guide). Uncheck the box to Delete dumps.
5. In **Maintain Packages by Package Combination** (ttaad1121m000) find your package combination, mark the VRC of package **ba**, delete the old VRC and then enter the new one.
6. Run **Rebuild DD**.



Note:

*If you are installing on an existing VRC, you only need to run session **Create Runtime Data Dictionary** (ttadv5210m000) and select to perform the operation for package **ba** only.*

7. Exit from Baan and then login again.

Update database:

Dynamic mapping is an integral part of the Gateway software. Each service pack includes the necessary definitions for out-of-the-box data transfer between PDM and BaanERP. If you have made any changes to the standard mapping, you need to document the changes and backup the tables. You will need to reenter these changes after installation of the standard mapping.

1. Run **Create Table from Sequential Dump** (ttaad4227m000) and **Reorganize Tables** (ttaad4225m000) for your company and package **ba** only (page 3-15 in the BaanPDM 5.2 Installation Guide).
2. Run **Create Tables** (ttaad4230m000) for your company and package **ba** only (page 3-16 in the BaanPDM 5.2 Installation Guide). For a new installation, 10 tables will be created with no data.
3. After the **ba** tables are created for the first time, you must enter data in **Maintain Batch Gateway Work Directory** (baxml0150m000) and **Maintain Gateway Used Company List** (baxml0160m000).
4. If you have customized the Gateway mapping, you must now review your changes and reenter as necessary.
5. If your Baan Company is not in English, you must run session **Copy/Move Language-Dependent Software Components** (ttadv6200m000). For complete instructions see Solution 121584.
- E. If you would like to transfer files from BaanPDM to Item Text, please download the files in: [GtwyBaanIV.zip](#) and follow the instructions in: [GatewayText.doc](#).

Option II – Changes Only

This option is available for customers who already have the ba package of BaanPDM 5.2c SP 2.5 installed. Doing this will give you the table changes since SP 2.5 only.

Follow the instructions in "Option I" above, using the files in: [BaanPDM5.2c-Baan5.0b-Changes.zip](#) instead of those mentioned.

☒ **Note:**

When running the session "Create tables from Sequential dumps" check the boxes: "Append Table if exists" and "Overwrite duplicate tables from dump".

All the changes contained in the dump files you downloaded are outlined in: [Baan5_mapping_changes.xls](#)

- E. If you would like to transfer files from BaanPDM to Item Text, please download the files in: [GtwyBaanIV.zip](#) and follow the instructions in: [GatewayText.doc](#).

For Baan ERP 5.0c (Corelli):

When using **ba package SP 3.11 in Baan5.0c**, you must use the Gateway.jar that was supplied with PDM 5.2c SP3.11. Using an older version of the Gateway.jar will cause incompatibility issues.

Before installing SP 2.11 or newer for Baan5.0c you must verify that you have installed Baan Solution 110022. This Solution was included in Baan5.0c SP6.

A. Upgrade the BaanPDM client on which the Gateway Load Server runs, and restart the Load Server (simply run the downloaded “patch” on this machine).

B. Upgrade the File Server on the Baan Server by copying the file Gateway.jar as installed above.

C Restart the File Server.

D. Upgrade the ba package in your Baan test/production company.



Note:

*We recommend that the package **ba** ALWAYS be installed in a new package VRC.*

If however you decide to update an existing VRC, before starting the installation make sure you note your current package combination and package VRC!

Option I – Full Upgrade

Install software components:

1. In **Maintain Package VRC's** (ttadv1111m000) add a new VRC. The **Derived from** and **Integration with** fields will be empty.
2. Unzip the zip file located in: [BaanPDM5.2c-Baan5.0c.zip](#) to a work directory on your server, such as: \$BSE/ba_files
3. Make sure no user is currently connected to Baan.
4. In **Import Data Dictionary** (ttiex1285m000) add the relevant paths and VRC (page 3-12 in the BaanPDM 5.2 Installation Guide). Uncheck the box to Delete dumps.
5. In **Maintain Packages by Package Combination** (ttaad1121m000) find your package combination, mark the VRC of package **ba**, delete the old VRC and then enter the new one.
6. Run **Rebuild DD**.



Note:

*If you are installing on an existing VRC, you only need to run session **Create Runtime Data Dictionary** (ttadv5210m000) and select to perform the operation for package **ba** only.*

7. Exit from Baan and then login again.

Update database:

Dynamic mapping is an integral part of the Gateway software. Each service pack includes the necessary definitions for out-of-the-box data transfer between PDM and BaanERP. If you have made any changes to the standard mapping, you need to document the changes and backup the tables. You will need to reenter these changes after installation of the standard mapping.

1. Run **Create Table from Sequential Dump** (ttaad4227m000) and **Reorganize Tables** (ttaad4225m000) for your company and package **ba** only (page 3-15 in the BaanPDM 5.2 Installation Guide).
2. Run **Create Tables** (ttaad4230m000) for your company and package **ba** only (page 3-16 in the BaanPDM 5.2 Installation Guide). For a new installation, 10 tables will be created with no data.
3. After the **ba** tables are created for the first time, you must enter data in **Maintain Batch Gateway Work Directory** (baxml0150m000) and **Maintain Gateway Used Company List** (baxml0160m000).
4. If you have customized the Gateway mapping, you must now review your changes and reenter as necessary.
5. If your Baan Company is not in English, you must run session **Copy/Move Language-Dependent Software Components**. For complete instructions see Solution 121584.
- E. If you would like to transfer files from BaanPDM to Item Text, please download the files in: [GtwyBaanV.zip](#) and follow the instructions in: [GatewayText.doc](#).

Option II – Changes Only

This option is available for customers who already have the **ba** package of BaanPDM 5.2c SP 2.5 installed. Doing this will give you the table changes since SP 2.5 only.

Follow the instructions in "Option I" above, using the files in: [BaanPDM5.2c-Baan5.0c-Changes.zip](#) instead of those mentioned.

☒ **Note:**

When running the session "Create tables from Sequential dumps" check the boxes: "Append Table if exists" and "Overwrite duplicate tables from dump".

All the changes contained in the dump files you downloaded are outlined in: [Baan5_mapping_changes.xls](#)

- E. If you would like to transfer files from BaanPDM to Item Text, please download the files in: [GtwyBaanV.zip](#) and follow the instructions in: [GatewayText.doc](#).

For Baan IV b:



Note:

*The latest Service Pack available for **Baan IVb** is **SP3.1**.*

If you use Baan Ivb, please contact Support before you upgrade.