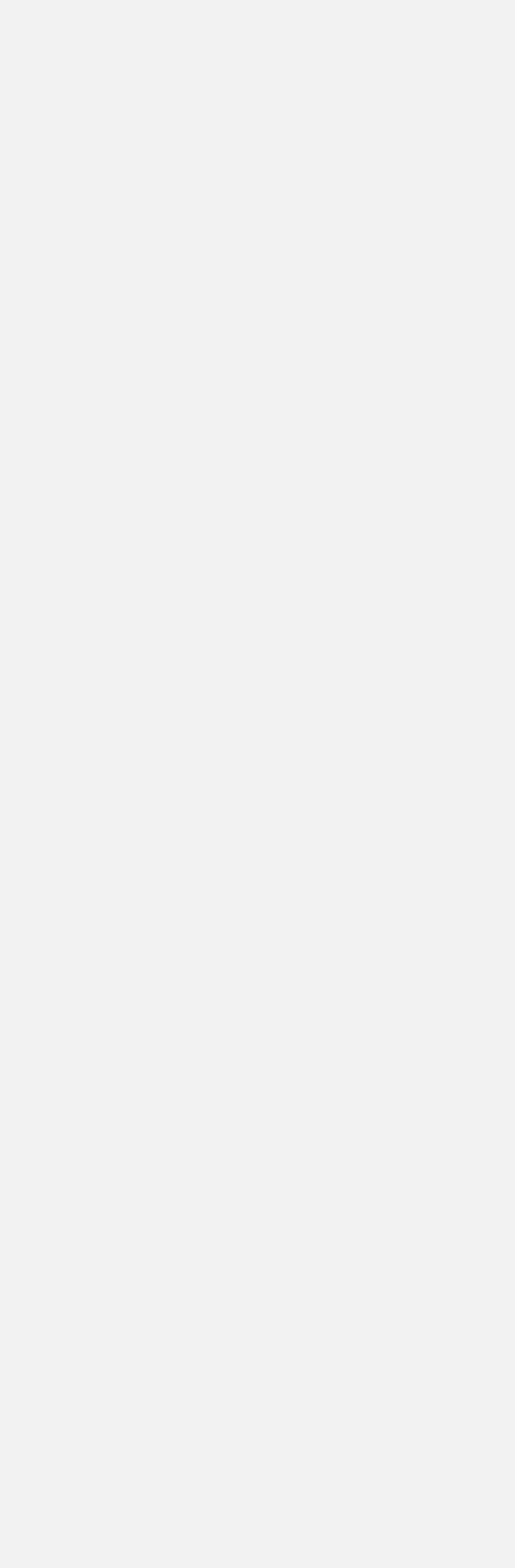




Access A2LN Utilities User Guide

A2LN Access Database

DRAFT



Copyright © ~~2025~~2023 Infor

Important Notices

The material contained in this publication (including any supplementary information) constitutes and contains confidential and proprietary information of Infor.

By gaining access to the attached, you acknowledge and agree that the material (including any modification, translation or adaptation of the material) and all copyright, trade secrets and all other right, title and interest therein, are the sole property of Infor and that you shall not gain right, title or interest in the material (including any modification, translation or adaptation of the material) by virtue of your review thereof other than the non-exclusive right to use the material solely in connection with and the furtherance of your license and use of software made available to your company from Infor pursuant to a separate agreement, the terms of which separate agreement shall govern your use of this material and all supplemental related materials ("Purpose").

In addition, by accessing the enclosed material, you acknowledge and agree that you are required to maintain such material in strict confidence and that your use of such material is limited to the Purpose described above. Although Infor has taken due care to ensure that the material included in this publication is accurate and complete, Infor cannot warrant that the information contained in this publication is complete, does not contain typographical or other errors, or will meet your specific requirements. As such, Infor does not assume and hereby disclaims all liability, consequential or otherwise, for any loss or damage to any person or entity which is caused by or relates to errors or omissions in this publication (including any supplementary information), whether such errors or omissions result from negligence, accident or any other cause.

Without limitation, U.S. export control laws and other applicable export and import laws govern your use of this material and you will neither export or re-export, directly or indirectly, this material nor any related materials or supplemental information in violation of such laws, or use such materials for any purpose prohibited by such laws.

Trademark Acknowledgements

The word and design marks set forth herein are trademarks and/or registered trademarks of Infor and/or related affiliates and subsidiaries. All rights reserved. All other company, product, trade or service names referenced may be registered trademarks or trademarks of their respective owners.

Publication Information

Release: Release level

Publication date: ~~April 2, 2025~~July 11, 2023

Disclaimer

This document reflects the direction Infor may take with regard to the specific product(s) described in this document, all of which is subject to change by Infor in its sole discretion, with or without notice to you. This document is not a commitment to you in any way and you should not rely on this document or any of its content in making any decision. Infor is not committing to develop or deliver any specified enhancement, upgrade, product or functionality, even if such is described in this document.

Contents

| | |
|---|-----------|
| About this guide..... | 5 |
| Intended audience | 5 |
| Related documents..... | 5 |
| Contacting Infor..... | 5 |
| Chapter 1 Overview | 6 |
| Requirements | 7 |
| Abbreviations/Definitions | 7 |
| Chapter 2 Access Database table | 8 |
| Chapter 3 Preparation | 11 |
| General Parameters | 11 |
| Set Options by Table | 12 |
| Clear all tables | 13 |
| Chapter 4 Mapping..... | 14 |
| Create Mapping Sheets..... | 14 |
| Export Templates..... | 15 |
| Extracting source data into the templates | 15 |
| Chapter 5 Process | 16 |
| Import Tables..... | 16 |
| Import Results..... | 17 |
| Validate sheets | 17 |
| Validate Tables | 18 |
| Chapter 6 MLE..... | 19 |
| Set Languages..... | 19 |
| Select Templates..... | 20 |

Contents

| | |
|---|--------------------|
| Create Template link file..... | 21 |
| Import and Process | 21 |
| Open MLE Data..... | 22 |
| Chapter 7 Prepare for dump | 23 |
| Generate text numbers | 23 |
| Unicode Correction | <u>2524</u> |
| Chapter 8 Specials..... | <u>2625</u> |
| Get Supported Tables..... | <u>2625</u> |
| Populate defaults | <u>2625</u> |
| Item Defaulting..... | <u>2726</u> |
| LN Master data | <u>2827</u> |
| Setup the recoding values | <u>2928</u> |
| Loading results..... | <u>3029</u> |
| Appendix A | <u>3230</u> |

About this guide

This guide describes the setup of Access A2LNDB-LNCE202x.xx and helps in understanding various options which are helpful in exporting/importing templates and validation of the datasheets.

Intended audience

This guide is intended for Migration experts who configures the validation of the data tables using Access A2LN.

Related documents

You can find the documents in the product documentation section of the Infor Support Portal, as described in "Contacting Infor" on page 5.

The following references served as inputs to the Installation Guide:

Data Conversion Adapter 3.4 - Infor LN Engine - User Guide U9130G US

Data Conversion Adapter 3.4 - Infor LN Engine - Installation Guide U9131G US

Data Conversion Adapter 3.4 – Legacy Engine – Installation Guide U9096G US

Data Conversion Adapter 3.4 – Data Conversion Adapter Studio – User Guide U9093F US

Data Conversion Adapter 3.4 – Data Conversion Adapter Studio – Installation Guide U9094F US

Contacting Infor

If you have questions about Infor products, go to Infor Concierge at <https://concierge.infor.com/> and create a support incident.

If we update this document after the product release, we will post the new version on the Infor Support Portal. To access documentation, select **Search > Browse Documentation**. We recommend that you check this portal periodically for updated documentation.

If you have comments about Infor documentation, contact documentation@infor.com.

Chapter 1 Overview

In a DCA A2LN migration process several steps can be identified. There is the data extraction phase from the source ERP system. The extracted data is loaded into an A2LN staging area. Here the first validation level of the data will take place as well as enriching and cleansing. From the staging Area the DCA Legacy engine will export the data into LNCE/LN10.x formats (da2 files). Using the standard LN migration data loader (ttmig5600m000) the data can be loaded into a LN environment. This document will describe how to use the A2LN Staging area tooling.

The A2LN staging area is created in an Access database and contains tables for high volume master data and a selected number of open transaction data. A customized ribbon "A2LN utilities" is present and the functionality will be described in this document. A2LN utilities have various options which helps us in creating and exporting the mapping templates, validation of datasheets. Access A2LN staging area comes in place after the extract of the data from the customer side into predefined templates.

There are various tools in this ribbon which are helpful in migration process. Following are the tools used most commonly while working on the A2LN Access database:

- 1 Preparation – Maintain Parameters, set table options, Clear tables, these tools are helpful in setting up the tables before importing.
- 2 Mappings – Create Mapping sheets, Export templates, helps in creating the mapping sheets, templates and exports them.
- 3 Process – Import tables, Validate Data sheets, validate tables, show import results, Show validation results.
Once the mapping sheets and templates are created, you need to import the excel sheets and validate them. Firstly, you need to import the tables and check the no. of tables that are imported in Access and validate them.
- 4 Prepare for dumping – Generate text numbers and Unicode correction,
- 5 Migration experts – Get supported tables, Populate Defaults. These tools are used only by the migration experts.

Requirements

- Microsoft Office 2007 or later (including Access)
- Data of the company that need to be migrated.

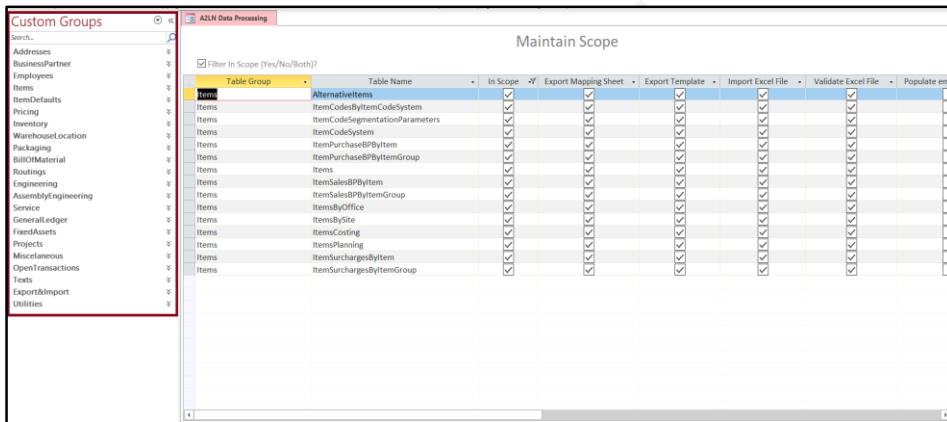
Abbreviations/Definitions

| Abbreviation | Description |
|--------------|---|
| A2LN | Refers to the Any ERP to LN 10.X migration logic pack solution. This is known as legacy migration logic pack. |
| DCA | Data Conversion Adapter |
| ODBC | Open Data Base Connectivity |
| DMF | Data Migration Factory (Infor) |
| IA | Implementation Accelerator |

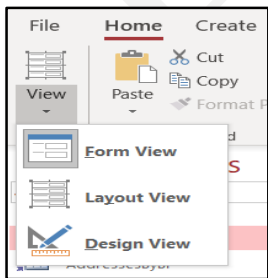
Chapter 2 Access Database table

In the A2LN Access database a set of tables are created to hold data from the customer which needs to be migrated to LN. The set of tables / templates is defined by the A2LN migration Logic Pack. This is often referred to as the staging area.

On the left side of the main window, scroll through the custom groups, to see the available templates in Access.



Expand any of the group and Open the template to view the data present in the template. To view the column information, go to Home -> View -> Design Mode in the menu



| EmployeesPeople | |
|---------------------------------|-----------------------|
| Description (Optional) | |
| tccom001 Employees | ERPLN table: bpmdm001 |
| First Date of Employment (sdte) | |
| Gender (sexe) | |

| Field Name | Data Type | Description (Optional) |
|-----------------------|------------|---|
| Employee | Short Text | Employee (emno) - Reference to table tccom001 Employees |
| FirstDateEmployment | Date/Time | First Date of Employment (sdte) |
| Gender | Number | Gender (sexe) |
| EmployeeType | Number | Employee Type (emtp) |
| AddressCode | Short Text | Address Code (cadr) - Reference to table tccom130 Addresses |
| Employment | Number | Employment (hwem) |
| Work | Short Text | Working Time Schedule (wtsc) - Reference to table tcpp101 Working Time Schedule Codes |
| LastDateEmployment | Date/Time | Last Date of Employment (edte) |
| DateBirth | Date/Time | Date of Birth (daob) |
| CivilStatus | Short Text | Civil Status (cist) |
| FiscalNumber | Short Text | Fiscal Number (finr) |
| Telephone | Short Text | Telephone (telw) |
| Telephone2 | Short Text | Telephone2 (tlw1) |
| Fax | Short Text | Fax (tefw) |
| Email | Short Text | Email (mail) |
| EmployeesPeopleText | Long Text | Employees People Text (ttxt010.ctxt) |
| TextIDEmployeesPeople | Number | Text ID Employees People (bpmdm001.txta) |

In the lower part of the design, you can explore the properties per table field. The information stored in here can be the following:

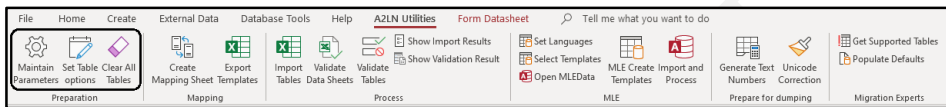
- Length of field (only applicable for text fields)
- Indication if field is required
- Type of field (e.g. text, number, date)
- Validation rules
- Default values
- Values for List box

| General | |
|-----------------|-----------|
| Field Size | Byte |
| Format | |
| Decimal Places | Auto |
| Input Mask | |
| Caption | Gender(*) |
| Default Value | 0 |
| Validation Rule | >0 And <4 |
| Validation Text | |
| Required | No |
| Indexed | No |
| Text Align | General |

| General | Lookup |
|---------------------------|--|
| Display Control | Combo Box |
| Row Source Type | Value List |
| Row Source | 1;"Male";2;"Female";3;"Not Applicable" |
| Bound Column | 1 |
| Column Count | 2 |
| Column Heads | No |
| Column Widths | 0.1973" |
| List Rows | 8 |
| List Width | Auto |
| Limit To List | No |
| Allow Multiple Values | No |
| Allow Value List Edits | No |
| List Items Edit Form | |
| Show Only Row Source Valu | No |

Chapter 3 Preparation

When opening the A2LN access database, the default menu is set to the A2LN utilities. This ribbon can be used for all required functions within the A2LN database. This chapter will describe the first three Buttons.



General Parameters

The general parameters will support the data migration with default values and other settings that will be used during the data migration process. The initial values are based on an IA implementation. The values in this form need to be synced with the customer data that is present in the golden company.

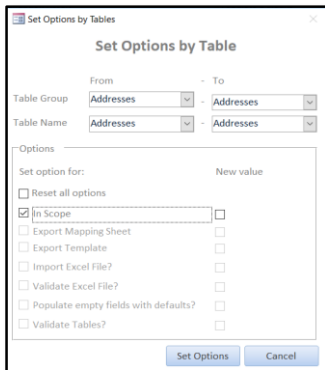
For every field in this form, a short explanation is visible on the bottom of the form when the field is selected.

Set Options by Table

In the Maintain Scope list (view) you can maintain the activities required per template. The Set Options by Table can be used to set the required activities per group. For instance, if you want to remove all tables related to the group Projects out of scope. You can manually disable the scope flag per table in the project group or use "Set Options by Table" option to set all tables for the group project at once.

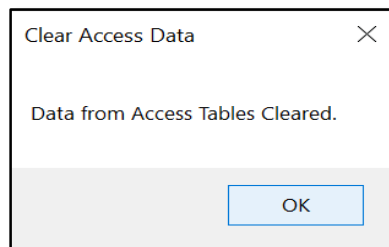
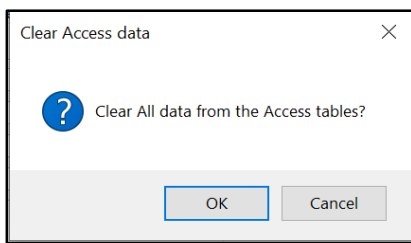
First, select the table group, example: Addresses, Items etc., Table name example: Activities, contacts etc. Once table group and table name are selected you need to set the options. The following are the various options available:

- 1 Reset all options: It sets the options to their default.
- 2 In scope: on selecting in scope, all the selected tables were triggered, and the options selected later will be applied on all the tables.
- 3 Export Mapping Sheet: Exports mapping sheets for the tables selected.
- 4 Export Template: Exports mapping templates, which contains certain rules for each columns of the table.
- 5 Import Excel File: Imports the excel sheet for the selected table.
- 6 Validate Excel file: Validates excel sheet for the selected table.
- 7 Populate empty fields with defaults: If there are any empty fields in the table the they'll get populated by default value (if they have any).
- 8 Validate Tables: Validates the tables.



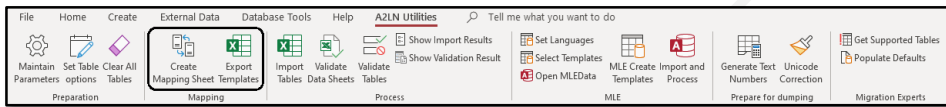
Clear all tables

On Selecting clear all tables, the data loaded into the Access database will be truncated. An exception is made for the Parameter table, A2LN main processing table, ConversionCodes and ConversionCodesValues table. These tables will not be truncated by this button.



Chapter 4 Mapping

This chapter will describe the functionality for creating mapping sheets and exporting templates.



Create Mapping Sheets

This tab creates the mapping sheets for the tables which are in scope. Mapping sheet consists of the properties/mappings of every column of the table. Use the button Create Mapping sheet to export the mapping sheets. Go through the questions and select the directory where the file can be stored.

In the directory, open these files with excel and explore the content. These files can be used as a base for mapping your source data to this Access database. The mapping sheets can be sent to the customer to design their own extraction rules in the case Infor does not have standard extraction rules already. The file name starts with an M and ends with the name of the Access table.

| A | B | C | D | E | F | G | |
|---------------------------------------|-------------|------|------|------------------------------|----------|---------------|----------------|
| Table Name | Field Name | Type | Size | Description | Required | Default Value | Allowed Values |
| Address Code (cadr) - Infor LN table: | | | | | | | |
| Addresses | AddressCode | Text | 9 | tccom130, tccom136, tccom139 | TRUE | | |
| Addresses | Name | Text | 35 | Name (nama) | TRUE | | |
| Addresses | City | Text | 8 | City Code(ccit) | TRUE | | |

Export Templates

Templates are taken as reference for the data you need to migrate. Templates contain the format in which the customer needs to deliver the data. In this format the data can be imported into Access.

Use the button 'Export Tables' to export the DCA templates. Go through the questions and select a directory where this file can be stored. Make sure this is a different directory than the one that is used for the mapping sheets.

In the directory, open these files with excel and explore the content. These files will contain the content and definition of your table in Access. File name starts with a T and ends with the name of the Access table.

| 1 | Employee | FirstDateEmployment | Gender | EmployeeType | AddressCode | Employment |
|---|----------|---------------------|--------|--------------|-------------|------------|
| 2 | 1 | 1/1/1970 | 3 | 1 | EMP000001 | 40 |
| 3 | 10 | 9/8/2000 | 3 | 1 | EMP000010 | 40 |
| 4 | 100 | 9/8/2000 | 3 | 1 | EMP000038 | 40 |

| 1 | Employee | Employee |
|----|----------|--|
| 2 | 1 | Description: Employee (emno) -- Reference to table |
| 3 | 10 | tccom001 Employees |
| 4 | 100 | ERPLN table: bpmdm001 |
| 5 | 1000 | Required : True |
| 6 | 10001 | PK Field : True |
| 7 | 10002 | Type : Text |
| 8 | 10005 | Size : 9 |
| 9 | 1001 | Default Value : |
| 10 | 10011 | Allowed Values : |
| 11 | 10012 | |
| 12 | 10013 | |

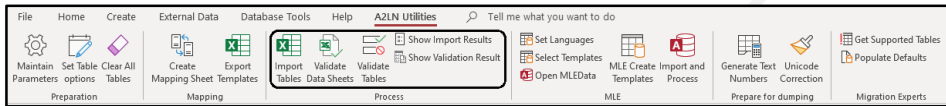
Extracting source data into the templates

While extracting the source data into the templates, you need to follow the rules of the templates. You need to check the rules of the columns like date format, numeric fields, string fields. All required fields are mandatory, make sure that they contain data. For certain source environments (like BaanIV, Baan5, XPPS, COM, etc.) DMF has standard extraction scripts. In this case, the customer does not need to create their own extract logic scripts.

Customer do not need to use the excel templates, they can also directly add their data into Access. Right click on the table, open design view, we can add/edit rules of the templates. This is however not recommended and should be done in consultation with the DMF.

Chapter 5 Process

This chapter will describe the import and validation functionality for the data that is delivered by the client.



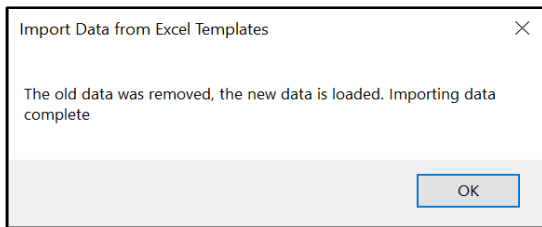
Import Tables

Import the excel sheets by selecting the folder where excel data is present. Upon selecting the required folder, Access will import the sheets which are selected in the Set options tab. The existing data in Access database will be deleted, before importing the data from excel sheets.

After importing the tables, you can then see the results of the imported tables. In the result you can get the count of uploaded and rejected tables. To check the reasons for rejection you need to validate tables.

Following are the rules for import:

- File name should end with <space> Access Table name.
- Only the first sheet or the sheet containing the Access Table name will be imported. Other sheets will be ignored during import.
- It is possible to import multiple excel files into the same table, as long as every file end with <space> Table name. Example: "Purchase Items.xlsx" and "Cost Items.xlsx" will both load into Access table "Items".



Import Results

After importing the tables, import results shows the number of records per table that is imported to Access. This screen will popup automatically when loading is completed.

| Imported Table | Import Date | Records in In | Records Load | Records Reje | Import File Name |
|------------------|-----------------------|---------------|--------------|--------------|-----------------------|
| Addresses | 12/17/2019 3:48:09 PM | 1741 | 1741 | 0 | Addresses.xlsx |
| Alternativeltems | 12/17/2019 3:38:45 PM | 7 | 7 | 0 | Alternativeltems.xlsx |
| AssetBook | 12/17/2019 3:38:45 PM | 1109 | 1109 | 0 | AssetBook.xlsx |
| Assets | 12/17/2019 3:38:45 PM | 91 | 91 | 0 | Assets.xlsx |

Validate sheets

Selected data sheets will be validated using this tab. After validating, validation results show the reasons for the rejection of tables. You can correct your data in Excel, referring to the validation results. Validation of sheets is important as it can also validate the data in sheets which are not loaded into Access table (rejected records).

After the correction done in the export spreadsheet, you can validate again to check whether the issue got resolved or not through the validate sheet option. Once you are satisfied with the result then upload the file to Access.

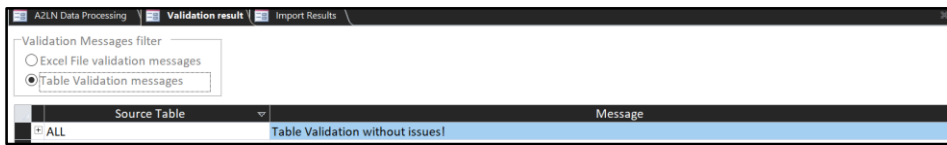
Difference with validate tables – validate tables will validate the loaded data as it is loaded in the Access table.

Note: Validate Data Sheets, validates only tables which are selected.

| Source Table | Message |
|------------------------------|--|
| ConversionFactorsByItemGroup | Duplicate Records found (2) |
| ItemSurchargesByItem | Field [SurchargeMethod] value not in (1;"Fixed Amount";2;"% of Total Costs";3;"% of Added Costs";9;"Not Applicable") |
| ItemSurchargesByItemGroup | Field [SurchargeMethod] value not in (1;"Fixed Amount";2;"% of Total Costs";3;"% of Added Costs";9;"Not Applicable") |

Validate Tables

All the tables are validated irrespective of the range selected. And returns the errors related to all the tables in DB. It validates the tables according to Access design specifications. Checks row source values, validation rules, required fields etc.

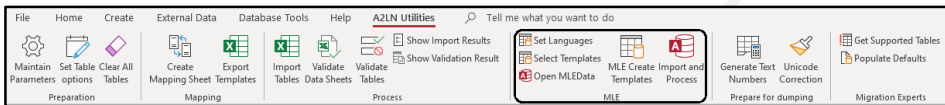


There is a filter in the validation result tab, where you can select excel validation or table validation.



Chapter 6 MLE

This chapter will describe how to use A2LN in combination with MLE fields. When you have MLE enabled in Infor LN CE and you are planning to migrate a table with 1 or more MLE enabled field(s), you must follow the procedure as described below.

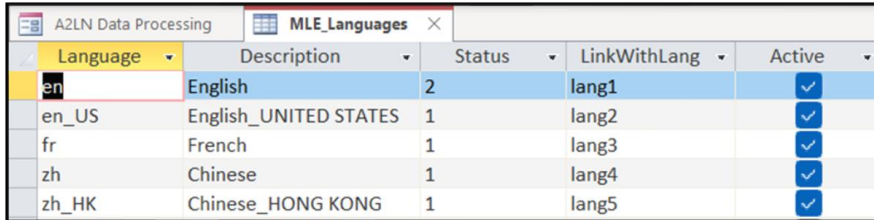


Set Languages

The data languages that are required are setup in Infor LN. These languages need to be copied to the A2LN Access database as a first step. You can find this on your customer system using session ttaad1111m000 (Infor LN menu: Tools/Application Configuration/Multi Data Language/Data Languages).

| Data Languages | | | | Status |
|--------------------------|----|----|-----------------------|---------------|
| <input type="checkbox"/> | en | | English | Base Language |
| <input type="checkbox"/> | en | US | English_UNITED STATES | Available |
| <input type="checkbox"/> | fr | | French | Available |
| <input type="checkbox"/> | zh | | Chinese | Available |
| <input type="checkbox"/> | zh | HK | Chinese_HONG KONG | Available |

This information should be inserted into the access table using the button “Set Language”.



| Language | Description | Status | LinkWithLang | Active |
|----------|-----------------------|--------|--------------|-------------------------------------|
| en | English | 2 | lang1 | <input checked="" type="checkbox"/> |
| en_US | English UNITED STATES | 1 | lang2 | <input checked="" type="checkbox"/> |
| fr | French | 1 | lang3 | <input checked="" type="checkbox"/> |
| zh | Chinese | 1 | lang4 | <input checked="" type="checkbox"/> |
| zh_HK | Chinese HONG KONG | 1 | lang5 | <input checked="" type="checkbox"/> |

Language: Use exact notions from Infor LN. Use the underscore if it is a country specific code (see screenshot)

Description: Copy from the Infor LN session

Status: 2 = Base language, 1 = Available

LinkWithLang: populate with the word "lang" and a number up to 10. This link is needed for the translation file.

Active: to indicate if a language is active in Infor LN.

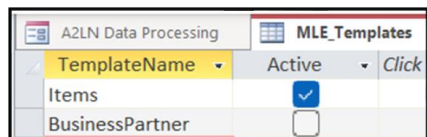
Select Templates

The next step is to identify which A2LN templates contains fields that are MLE. In Infor LN, you can open the session ttadv4137m000 to lookup the LN tables and fields (Infor LN menu: Tools/Application Configuration/Multi Data Language/Registered Tables with Multi Language Fields).



| Package | Table | Enabled | All Data Languages Always Available |
|---------|-------|---------|-------------------------------------|
| tc | ibd | Yes | <input checked="" type="checkbox"/> |

You need to find the corresponding A2LN table and enter this using the button "Select Templates". Use the Active button if you are planning to use the table for data migration.



| TemplateName | Active | Click |
|-----------------|-------------------------------------|-------|
| Items | <input checked="" type="checkbox"/> | |
| BusinessPartner | <input type="checkbox"/> | |

Create Template link file

Populate the template link file in Access to map the Infor LN table field with the Access table field. See examples below:

| LNTTable | LNTTableField | TemplateName | TemplateField |
|----------|---------------|---------------------|-----------------|
| tcibd001 | dscA | Items | ItemDescription |
| tirou450 | dscA | ReferenceOperations | Description |

The following steps is only required for the A2LN_CE202210 version:

- Run the “Export Templates” function to export this Access table.
- You can maintain the file if needed.
- Use the button “MLE create Templates” and select the file you just created. This will do the following:
 - MLE_TableTemplate_link will be deleted first
 - Create 2 subdirectories in your folder: Exported and FromCustomer
 - In the exported folder new files have been created. For this example, it would have created the files Items_MLEByTemplate.xlsx and ReferenceOperations_MLEByTemplate.xlsx.
 - MLE_TableTemplate_link will be populated with data from the excel file.

These files contain all the records from the Access table, including the description for the first language. These files need to be sent to the customer for translation. The customer can populate the other language fields with the correct translation. This is optional and not needed if no translation is required. If these fields are left empty, it falls back on the base language during migration.

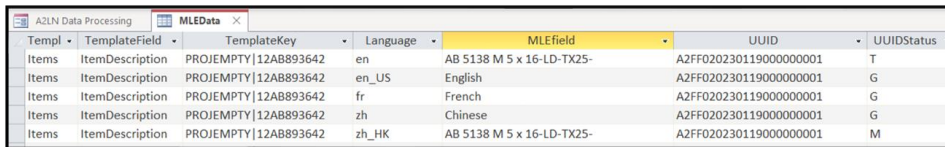
Once the files are completed by the customer, they need to be copied to the folder “FromCustomer”.

Import and Process

Use the button “Import and Process” to import the customer translation into Access. You need to select the main directory and the script will pick up automatically the files that are present in the “FromCustomer” folder.

Open MLE Data

When the import is finished, you can view the imported data using the button “Open MLE data”



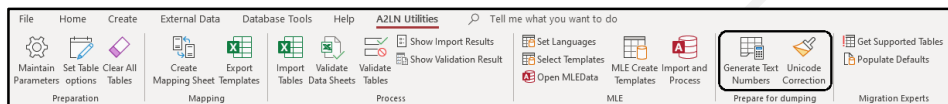
| Templ | TemplateField | TemplateKey | Language | MLEfield | UUID | UUIDStatus |
|-------|-----------------|----------------------|----------|---------------------------|------------------------|------------|
| Items | ItemDescription | PROJEMPTY 12AB893642 | en | AB 5138 M 5 x 16-LD-TX25- | A2FF020230119000000001 | T |
| Items | ItemDescription | PROJEMPTY 12AB893642 | en_US | English | A2FF020230119000000001 | G |
| Items | ItemDescription | PROJEMPTY 12AB893642 | fr | French | A2FF020230119000000001 | G |
| Items | ItemDescription | PROJEMPTY 12AB893642 | zh | Chinese | A2FF020230119000000001 | G |
| Items | ItemDescription | PROJEMPTY 12AB893642 | zh_HK | AB 5138 M 5 x 16-LD-TX25- | A2FF020230119000000001 | M |

In this view you can see all translations that were generated. Here a short explanation of the fields:

- **Template & TemplateField.** Access table and field name for MLE field.
- **TemplateKey.** Primary key in Access table. If multiple fields are part of the primary key, they will be separated with a pipeline (“|”).
- **Language.** Language as defined in Infor LN
- **MLEfield.** Value for Access field in the LN language
- **UUID.** Id that will uniquely identify the MLE definition for the specific field. This is generated by Access and should not be modified.
- **UUIDStatus.** This field will indicate the source of the translation:
 - **T – Template.** Data coming from the original description of the access table
 - **G – Generated.** Coming from the translation defined by the customer.
 - **M – Missing.** Field left empty in template. Description is derived from the base language.

Chapter 7 Prepare for dump

This chapter will describe the pre-conversion activities before the dump can be started and after all data has been loaded into Access.



Generate text numbers

In Infor LN, texts are stored in a separate table. The text will be linked with a number to corresponding record. In the Access database some of the templates contains one or more Text memo fields to add the actual text. During filling the templates, it is only required to fill these fields.

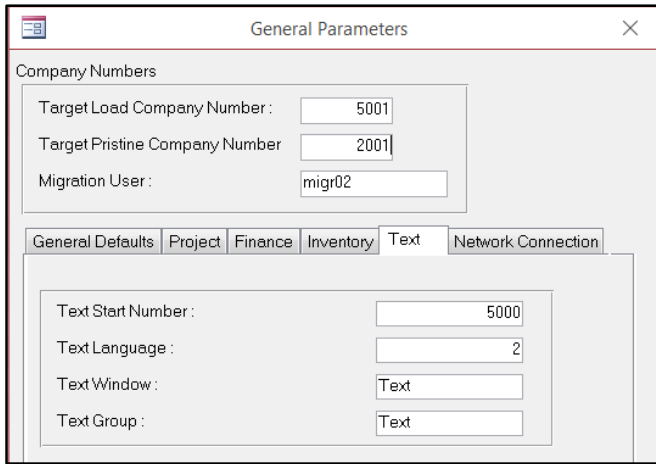
| EmployeesPeople | |
|-----------------------|-------------------|
| Employees People Text | Text ID Employees |
| Some text here | 0 |
| | 0 |

The textID number field will be generated by this routine.

It will evaluate if the memo text field is filled and if so, it will generate a text number for it and store it in the table and add it as an entry in the text table template.

The text table template is used to populate the texts to LN (to ttxt010 table) and in the other templates the textID reference will be used as the link to the text table.

The text will be generated in Access, based on certain parameters. The text start number in the general parameters will set the first number to be generated in the text table in LN. This should be a non (free) number at the LN text table.



The screenshot shows a 'General Parameters' dialog box with the following fields:

- Target Load Company Number: 5001
- Target Pristine Company Number: 2001
- Migration User: migr02
- Text Start Number: 5000
- Text Language: 2
- Text Window: Text
- Text Group: Text

Note: this number needs to be set to a higher number, than the highest text number currently present in the target Infor LN company. See Infor LN session ttxt1100m000 and go to the last record.

It is also possible to directly fill the text table with the values from the source, at the standard templates only the textID needs to be filled and not the text memo field.

[When importing templates data into Access Database, the template/table field data type is determined based on the field value of first couple records. Memo text field data type will be determined as Short Text when the value is short text for the first 10 records of the template even though the value has](#)

[For memo text field, its data type is Short Text if the memo text field value of the first 10 records of the template is having less than 256 characters data. In case the template has long text data for the memo text field, the field value will be truncated to 255 characters and imported.](#)

[As an alternative solution to solve this problem, always make sure that first record value of memo text field is having Long Text by appending \(for existing text\) or inserting some dummy text to make it as long text. Before generating Text numbers, clear the dummy text from the respective access templates memo text fields.](#)

Unicode Correction

In the past it was required to make sure that no High ASCII characters are present in key fields, because of the Unicode installation. With the latest Infor LN solution, most of these characters are accepted, but there are a few exceptions.

Furthermore, it is a good custom to have codes without high ASCII characters for several reasons (data governance, integrations, etc.)

A2LN provide an option to convert these high ASCII characters into normal characters. This can be done in the following way:

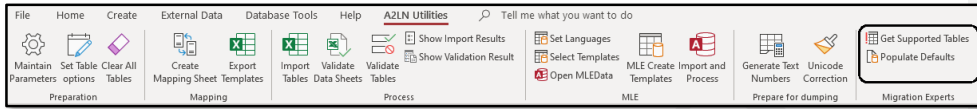
In the group utilities, start the macro "Unicode Correction"

[For full list of table fields applicable see Appendix B.](#)

Mention also the other recoding option using the Get Code ("Unic") – Recoding functionality from the DCA studio (see the user guide of the DCA studio)

Chapter 8 Specials

This chapter will describe the optional functions and features to optimize the data migration process.



Get Supported Tables

This Command will refresh the list of available templates. It will not reset the selected flag. Templates removed in the meantime will get the expired flag set and hidden from the overview. This can be useful when new (customized) templates has been created in Access to extend the migration scope for the customer.

Populate defaults

USE CAREFULLY! MEANT FOR EXPERIENCED USERS

Only use this option in a trial migration in order to be able to continue the remainder process. This option will check if a field value is NULL, but a default specified in the Data Dictionary of A2LN. In case of numeric fields both NULL and empty fields will be filled with 0.

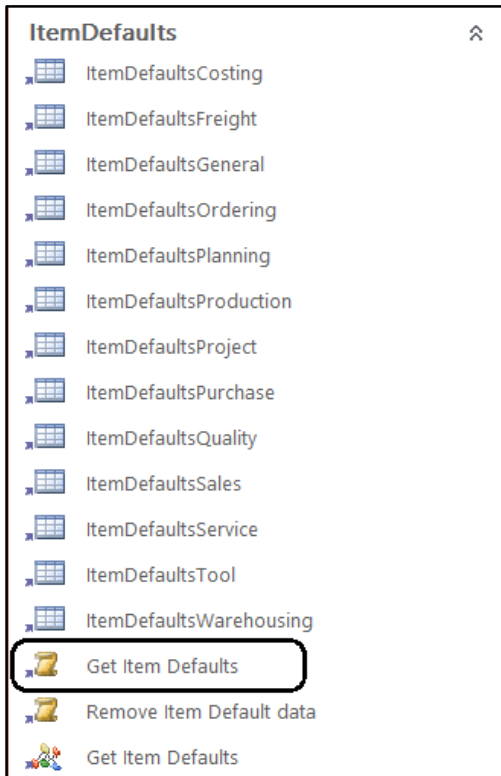
Item Defaulting

The A2LN logic pack can make use of the item defaulting as specified at the LN side. Using the Item Defaults, it allows customers to fill less data in the item template itself as many of these fields can be populated using the defaults. If this functionality is used, you also need to make use of the Exception field in the Item's Template. The exception field forces to ignore the item defaults for a record even if defaults are specified.

The content of the Item defaulting tables at the LN side needs to be exported via the standard Export to Excel functionality from LN.

You only need to export the item defaulting tables which you want to use. During the export make sure you select all the fields of the table. Place the exported data in a directory on the machine where the Access database is located.

In the Access database open the "Item Defaults" group, in this group the macro "Get Item Defaults" is located. The User should also allow Macro's to enable running the macro.



When starting the macro, the User will be asked for the Path where the Template File(s) are located, as specified above. After submitting, the process starts to import the Excel data into the Access Tables.

Old data in the "Item Defaults" tables will be removed first and after successful removing, the new data will be imported and extracted. This will only be done for the defaulting data exported from LN.

The import results are shown in the overview Tab where you can monitor which Imported Table(s) has succeeded and the amount off records have been succeeded / rejected in the Import Process.

Now as the "Item Defaults" tables are filled the content can also be used by the A2LN logic pack during populating data for the item- structure.

Below some additional information regarding the converted default template.

If you look at the exported Excel Files(s) you see some Sheet-Tabs added:

"data out", "data", and "enums"

The "data out" Tab contains the Final data with the correct lookup values per Table Fields(s).

The lookup value Fields come from the data which came from the data in the "enums" Tab.

In this "enums" Tab the relation Value, Description is defined.

Form Fields will be skipped and are not populated in the "data out" Tab.

Fieldnames are automatically derived from the original "data" Tab from the added Note per Column.

The output Files have the format like "T20200325-155347 ItemDefaultsGeneral.xlsx"

See Appendix A for an alternative to import Item defaults and other Infor LN master data.

LN Master data

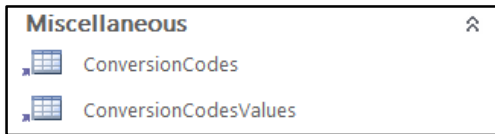
For certain data migration processes, it is now mandatory to load a few LN Master data tables into the A2LN access database (Staging area). This can be done for the following topics:

- Warehouses (used for Warehouse Item data mapping rules)
- Fixed Assets (used for Asset distribution mapping logic)
- Work Center (used for Job Shop Routing Operations data mapping rules)
- Sites (future use)

Both sets of data can be retrieved as described for the Item defaults. For an alternative method, using exchange, please refer to Appendix A.

Setup the recoding values

Recoding is used to recode master data fields to be compatible with Infor LN, as a part of the data migration. You can recode data using the tables ConversionCodes and ConversionCodeValues under the Miscellaneous in the Access database.



In the ConversionCode template you can define for which ConversionCode values need to be recoded. You can specific multiple ConversionCodes. If you want to use them you also need to set the selected flag to "Yes". Using this selected flag you can also skip previous added ConversionCodes without having the need to remove them from the template.

In the ConversionCodeValues you will register per ConversionCode Old value (as in the templates in scope) and provide it with a new value. For some recoding cases it is possible you have a value (old) in the templates but you want to make it empty as a migrated value. If the Old value is specified and the New value is left blank (not specified) and the apply field is set to "Yes" this means the new Value (blank) will be considered. If the Apply field is "No" then the recoding specified will be ignored.

The values in the ConversionCodeValues templates are taken into account when for the recoding code also the GetCode() function is applied in the Conversion Logic. See also the recoding functionality described in the DataConversionAdapter Studio User guide. When applied the migrated data should reflect the "New" values as listed in the ConversionCodeValues template.

If the requested value cannot be found in ConversionCodeValues for a specific ConversionCode (and Selected = "Yes") then the requested value will be used as a result for the migration.

Below are some examples for conversion codes. You can see the conversion code for Business partners, Country and Unicode. You can define your own conversion code as per your convenience as shown in the picture below.

The screenshot shows a table with the following data:

| Conversion C | Conversion Code Description | Click to Add |
|--------------|-----------------------------|--------------|
| BPID | Business Partner recoding | |
| CCTY | Country Code | |
| UNIC | Unicode conversion | |
| * | | |

After the creation of conversion codes, you need to give the conversion values. As shown in the example below, you need to give the old value and the new value for the required data. These

changes will be reflected after the tables were loaded in DGA engine; conversion happens while the engine converts data to ascii files (which are LN compatible).

| A2LN Data Processing | | ConversionCodesValues | |
|----------------------|---------------|-----------------------|--------------|
| Conversion C | Old Value (*) | New Value | Click to Add |
| BPID | 100293 | BP0100293 | |
| BPID | 238955 | BP0238955 | |
| CCTY | 001 | NLD | |
| CCTY | 002 | GBR | |
| CCTY | 003 | GER | |
| UNIC | β | SS | |
| * | | | |

Loading results

Once the data is loaded in Access and LN, then the loaded results were recorded in Access overview sheets. These sheets contain the number of records that were loaded/rejected, date on which data is received in Access as well as LN. All the import results and validation results, remarks were recorded here.

We are using the Overview sheet to consolidate the update on Access and LN data upload.

You can just copy the import results from Access database and paste in "ImportResults" worksheet, which automatically records the imported data results into staging data.

| 4 | | | | | | |
|---|--|-------------|------------------------|----------------|------------------|------------------|
| 5 | Copy the import results from access into this tab. | | | | | |
| 6 | | | | | | |
| 7 | Imported Table | Import Date | Records in Import File | Records Loaded | Records Rejected | Import File Name |
| 8 | | | | | | |

| DMF-A2LN1070 Available Templates | | | | | | Loaded in Access | | | | | |
|----------------------------------|-----------|---------------|----------------------|-------------------------------|----------------|------------------|---------------------------|---------------------|----------------------|----------------|------------------|
| S. No | Category | Template | Main LN Target Table | LN Table Name | In scope (Y/N) | Data Owner | Source Data files receive | Load Access Started | Load Access Finished | Loaded Records | Rejected records |
| 1 | Addresses | Addresses | tccom130 | Addresses | Yes | <name> | 4/3/2020 | 4/3/2020 | 4/3/2020 | 38134 | 0 |
| 2 | Addresses | AddressesByBP | tccom133 | Addresses by Business Partner | Yes | | | | | 0 | 0 |

Here in the loaded in Access column, the no. of records loaded/rejected will be taken from the imported results we provide, which makes our life easier.

DRAFT

Appendix A

This appendix will describe how to import LN Master data using text files.

For some functional areas it is required to have the LN master data present in the Access database. Currently item defaults, fixed assets, warehouse item data and Job shop Routing Operations data might need these LN tables in the mapping to functional correct ASCII files.

In a nutshell the procedure is as follows:

- Export LN Master data using exchange.
- Copy these files to the environment where the access database is located.
- Use the ribbon "Import Tables". This program will convert the files generated with exchange to excel (xlsx) files automatically and will then import these files.

There is an exchange scheme available that will be able to export a pre-defined set of files from Infor LN. This will be by default pipeline ("|") separated files with the extension "txt". You can change the delimiter if that is required. The exported files will have a header with the field names as defined in the Access template. The name of the file will equal the name of the Access template.

Exchange scheme with 3 batches:

| | Batch | Seq. No. | Description | Company | Exchange Using Audit | Text |
|--------------------------|---------|----------|---------------------|---------|-----------------------|------|
| | →a [] | = [] | →a [] | = [] | = [] | |
| <input type="checkbox"/> | FASSETS | 30 | LN Fixed Asset Data | 8000 | DMF - Testing Company | ● |
| <input type="checkbox"/> | ITEMDEF | 10 | Item Defaults | 8000 | DMF - Testing Company | ● |
| <input type="checkbox"/> | MASTERD | 20 | LN Master Data | 8000 | DMF - Testing Company | ● |

Example of generated ASCII file:

```
ItemControlAndDefaultsBySite.txt
1 kitm|cigt|site|cwar|srce|uidt|sald|ordd|prod|purd|ward|serd|fmgd|gumd|tool
2 30|F10001|NL.NL0001|NL1020|20|2|2|1|1|1|1|1|2|2|2
3 30|F10001|NL.NL0003|NL3010|60|1|1|1|1|1|1|1|2|2|2
4 30|P00000|NL.NL0001|NL1010|40|1|1|1|2|1|1|2|2|2|2
5 30|P00001|NL.NL0001|NL1010|20|1|1|1|1|2|1|2|2|2|2
6 30|P00010|NL.NL0001|NL1010|40|1|2|1|2|1|1|2|2|2|2
7 30|P00011|NL.NL0001|NL1010|40|1|2|1|2|1|1|2|2|2|2
8 30|P10001|NL.NL0001|NL1010|40|1|1|1|2|1|1|1|2|2|2
9 30|P10002|NL.NL0001|NL1010|40|1|1|1|2|1|1|1|2|2|2
10
```

If you want to create these text files by yourself, the following points are important:

- The header line should contain the exact mnemonics as the corresponding Access template.
- The file extension should always be .txt.
- The file name should correspond to the Access template name.
- You can choose you own separator. Make sure to set this also in the A2LN Parameters session.

Once these files are ready, they need to be placed in a directory from where they can be imported in Access.

The last step is to use the "Import Tables" ribbon. It will ask you for an import directory. After providing this path, the program will scan the folder (and subfolders) for files with extension ".txt". These files will be converted from text files to excel files, using the separator specified in the General Parameters. Once this is done, the import program will scan the directory for ".xlsx" files to be imported in the A2LN access database.

Appendix B

This appendix lists the Access tables fields applicable for Unicode Correction from the A2LN ribbon applies.

| Table | Field |
|---|-------------------------------------|
| Addresses | City |
| Addresses | SearchKey |
| Addresses | SearchKeyStreet |
| AdjustmentOrders | Item |
| AlternativeItems | Item |
| AlternativeItems | AlternativeItem |
| AlternativeMaterial | MainItem |
| AlternativeMaterial | AlternativeItem |
| AuxiliaryPackaging | Item |
| BillOfMaterial | ManufacturedItem |
| BillOfMaterial | SubItemItemSegment |
| BusinessPartner | SearchKey |
| BusinessPartner | InternalSalesRep |
| BusinessPartner | ExternalSalesRep |
| BusinessPartner | Buyer |
| Characteristic | SearchKey |
| Contacts | SearchKey |
| Employees | Employee |
| EngineeringBOM | EngineeringItem |
| EngineeringBOM | ComponentItem |
| EngineeringItem | EngineeringItem |
| EngineeringItemRevision | EngineeringItem |
| EngineeringItemsAndItemRelationship | EngineeringItem |
| EngineeringItemsAndItemRelationship | Item |
| ItemCodesByItemCodeSystem | AlternativeItemCode |
| ItemCodesByItemCodeSystem | Item |
| ItemIssueByPeriod | Item |

Formatted: Font: Bold

Formatted Table

| | |
|--|------------------------------------|
| ItemIssueByWarehouse | Item |
| ItemPurchaseBPByItem | Item |
| ItemQualityData | Item |
| Items | Item |
| Items | SearchKeyI |
| Items | SearchKeyII |
| ItemSalesBPByItem | Item |
| ItemsByMPN | Item |
| ItemsByOffice | Item |
| ItemsBySite | Item |
| ItemsCosting | Item |
| ItemsPlanning | Planner |
| ItemsPlanning | Item |
| ItemSurcharges | Item |
| JobShopBillOfMaterial | ProductItem |
| JobShopBillOfMaterial | SubItemItemSegment |
| JobShopBOMAlternativeMaterial | ProductItem |
| JobShopBOMAlternativeMaterial | AlternativeItem |
| JobShopRouting | ManufacturedItem |
| JobShopRoutingOperations | ManufacturedItem |
| LocationByItem | Item |
| Locations | Location |
| Locations | Row |
| Locations | Level |
| Locations | Bin |
| LotsByItem | Item |
| MaterialRoutingRelationshipsBySite | ItemSegmentProduct |
| MPNByItemBusinessPartner | Item |
| PriceBooks | Item |
| ProductionBillOfMaterial | ProductItem |
| ProductionBillOfMaterial | SubItemItemSegment |
| ProductionBOMAlternativeMaterial | ProductItem |
| ProductionBOMAlternativeMaterial | AlternativeItem |
| ReferenceDesignatorByBomAndSite | ProductItem |
| ReferenceDesignatorByProductionBOM | ProductItem |
| RoutingCodesByItem | ManufacturedItem |
| RoutingOperation | ManufacturedItem |
| SerializedItems | Item |
| SerializedItems | SerialNumber |

| | |
|---|-----------------------------------|
| SerialsByWarehouse | Item |
| SerialsByWarehouse | SerialNumber |
| StorageConditionsByItemGroupsItem | Item |
| SubcontractingBOM | ProductItem |
| TestingCombinations | Item |
| TestingCombinations | SubItem |
| WarehouseItem | Item |
| Workcenter | BackflushEmployee |

DRAFT