



Infor Web UI 10.3

## Difference Study Infor Web UI 10.2 - 10.3

---

© Copyright 2012 Infor

All rights reserved. The word and design marks set forth herein are trademarks and/or registered trademarks of Infor and/or its affiliates and subsidiaries. All rights reserved. All other trademarks listed herein are the property of their respective owners.

## Important Notices

The material contained in this publication (including any supplementary information) constitutes and contains confidential and proprietary information of Infor.

By gaining access to the attached, you acknowledge and agree that the material (including any modification, translation or adaptation of the material) and all copyright, trade secrets and all other right, title and interest therein, are the sole property of Infor and that you shall not gain right, title or interest in the material (including any modification, translation or adaptation of the material) by virtue of your review thereof other than the non-exclusive right to use the material solely in connection with and the furtherance of your license and use of software made available to your company from Infor pursuant to a separate agreement ("Purpose").

In addition, by accessing the enclosed material, you acknowledge and agree that you are required to maintain such material in strict confidence and that your use of such material is limited to the Purpose described above.

Although Infor has taken due care to ensure that the material included in this publication is accurate and complete, Infor cannot warrant that the information contained in this publication is complete, does not contain typographical or other errors, or will meet your specific requirements. As such, Infor does not assume and hereby disclaims all liability, consequential or otherwise, for any loss or damage to any person or entity which is caused by or relates to errors or omissions in this publication (including any supplementary information), whether such errors or omissions result from negligence, accident or any other cause.

## Trademark Acknowledgements

All other company, product, trade or service names referenced may be registered trademarks or trademarks of their respective owners.

## Publication Information

---

<b>Document code</b>	P3658A US
<b>Release</b>	10.3
<b>Publication date</b>	February 2012

---

---

# Table of Contents

## About this document

<b>Chapter 1 Introduction to Web UI</b>	<b>7</b>
Introduction to Web UI	7
Web UI user interface	7
Workspace-ERP Enterprise Plug-in user interface	9
Related documents	10
<b>Chapter 2 Enhancements</b>	<b>11</b>
Web UI administration changes	11
Improved support of Integrated Windows Authentication SSO	11
Display certificate expiry dates	11
Usability improvements	12
Navigation menu	12
Row navigation, scrolling, and selection	12
Bar charts	12

---



---

# About this document

## Document summary

This document provides an overview of the differences between Web UI 10.3 and Web UI 10.2, and describes the new functionality in Web UI 10.3.

To use this document, no detailed knowledge is required. Understanding the contents is easier if you are familiar with the overall Web UI functionality.

This document contains these chapters:

- Chapter 1, "Introduction to Web UI," provides an overview of Web UI.
- Chapter 2, "Enhancements," describes general functionality enhancements in the new Web UI version.

## Comments?

We continually review and improve our documentation. Any remarks/requests for information concerning this document or topic are appreciated. Please e-mail your comments to [documentation@infor.com](mailto:documentation@infor.com).

In your e-mail, refer to the document number and title. More specific information will enable us to process feedback efficiently.

## Contacting Infor

If you have questions about Infor products, go to the Infor Xtreme Support portal at [www.infor.com/inforxtreme](http://www.infor.com/inforxtreme).

If we update this document after the product release, we will post the new version on this Web site. We recommend that you check this Web site periodically for updated documentation.



# Chapter 1

## Introduction to Web UI

# 1

## Introduction to Web UI

Web UI is a web-based user interface client that is the recommended user interface for these applications:

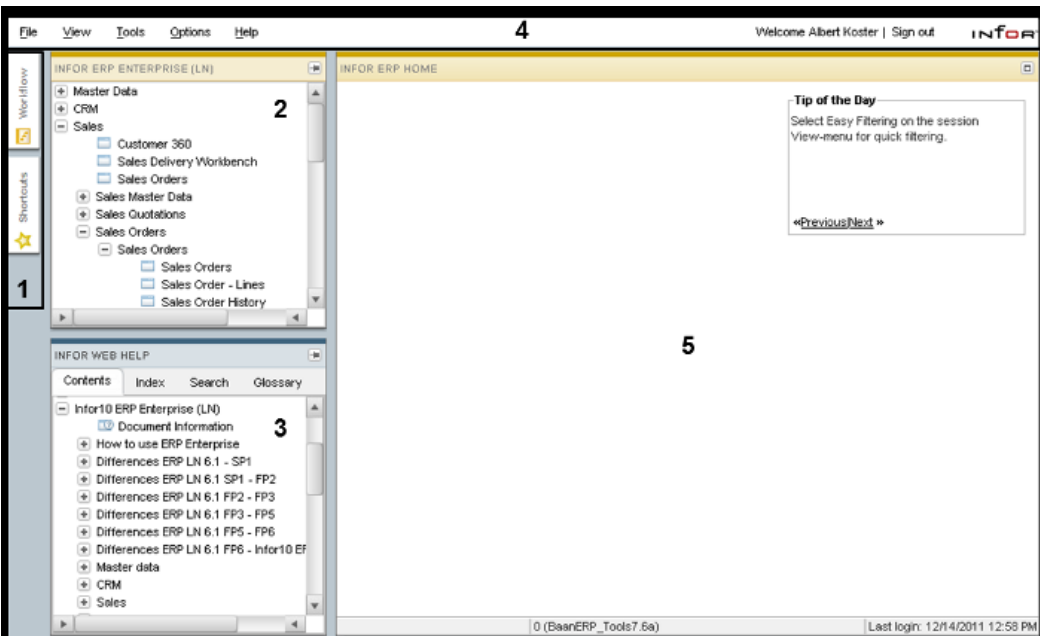
- Infor DEM
- Infor ERP applications:
  - Infor10 ERP Enterprise (LN)
  - Infor ERP Baan5.x
  - Infor ERP BaanIV
- Infor Workflow integration for Fujitsu v11
- Infor Web Help

Web UI supports BaanIV, Baan5.0c, and Infor10 ERP Enterprise (LN). Because of architectural differences between Infor releases, some features might be slightly different or might not be supported in earlier ERP versions.

In addition to the 'classic' Web UI, Infor10 ERP Enterprise (LN) users can use the Infor10 Workspace-ERP Enterprise Plug-in.

## Web UI user interface

This diagram shows an example of the Web UI user interface:



This table describes the areas of the user interface:

Number in Diagram	Description
1	Hidden panels
2	Navigation panel for Infor ERP applications, such as Infor10 ERP Enterprise (LN)
3	Infor Web Help panel
4	Title bar
5	Work area

**Note**

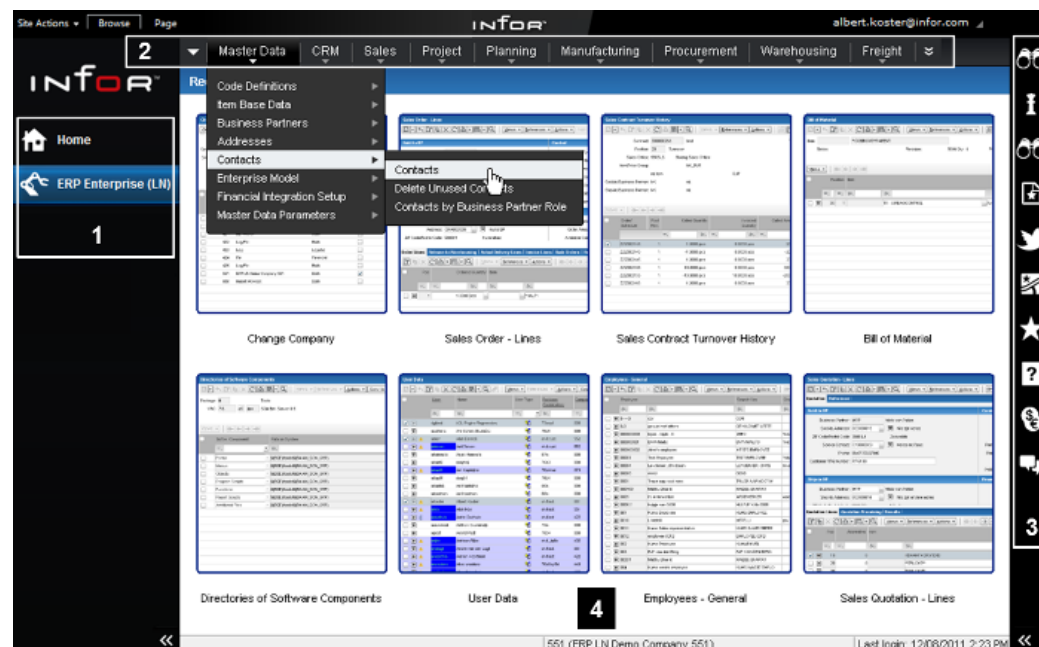
All panels, except the work area, can be hidden and/or unhidden and moved to different positions.

For details on Web UI, see the Web UI online help.



## Workspace-ERP Enterprise Plug-in user interface

This diagram shows an example of the Workspace-ERP Enterprise Plug-in user interface:



This table describes the areas of the user interface:

Number in Diagram	Description
1	Collapsible panel with icons to activate Infor10 applications, such as Infor10 ERP Enterprise (LN)
2	Menu bar with application navigation menus, <b>Options</b> menu, and a menu to switch between running sessions
3	Collapsible panel with icons to activate Web parts, such as <b>Documentation</b> , <b>Shortcuts</b> , and <b>Maps</b>
4	Application area with thumbnails of recently closed sessions

For details on the Workspace-ERP Enterprise Plug-in, see the Infor10 Workspace-ERP Enterprise Plug-in - User Guide (U9647 US).

## Related documents

This table shows documents that are related to this difference study:

Title	Document Edition
Infor Web UI 10.3 Online Help	Not applicable
Infor10 Workspace-ERP Enterprise Plug-in - User E Guide (U9647 US)	
Infor Web UI - Installation and Configuration Guide O (U8715 US)	
Infor Web UI - Installation and Configuration Guide M for Infor Web Help (U8934 US)	
<i>Infor Enterprise Server 8.7 - Release Notes (U9641 US)</i>	A
<i>Infor Enterprise Server 8.7 - Technical Notes (U9615 US)</i>	A
Infor10 ERP Enterprise Server Extensions (LN) F Installation Guide (U9484 US)	

This chapter describes the enhancements in the new release.

## Web UI administration changes

### Improved support of Integrated Windows Authentication SSO

The **Integrated Windows Authentication Configuration** dialog box in the Web UI Administration Console contains these new features:

- **Active Directory Hostname (KDC)** text field  
You can specify multiple KDC entries in this field.
- **KDC Lookup** button  
Shows a list of all KDCs in Active Directory. You can select one or more KDCs. These KDCs are propagated to the **Active Directory Hostname (KDC)** field.
- **Test** button  
Runs a diagnostic test to validate the IWA configuration settings.

### Display certificate expiry dates

In the Web UI Administration Console, the validity of certificates is displayed in these dialog boxes:

- **Federation Services Configuration**  
To open this dialog box, select **Infor Web UI Administration > Login Configuration**. Then select **Federation Services** and click **Configure SSO**.  
The 'Valid Until' date of the AD FS token-signing certificate is displayed.
- **Tomcat HTTPS Configuration**  
To open this dialog box, select **Infor Web UI Administration -> Login Configuration** and click **Configure HTTPS**.  
The 'Valid From' and 'Valid Until' date of the HTTPS certificate in the Tomcat keystore are displayed.

- **Diagnostics**

To open this dialog box, select **Infor ERP > Diagnostics**.

For Infor ERP environments that use the BaanLogin SSL protocol, the 'Valid From' and 'Valid Until' dates of the BaanLogin SSL certificate in the Web UI and Infor10 ERP Enterprise (LN) keystores are displayed.

## Usability improvements

### Navigation menu

To open a sub-menu in the navigation menu in Workspace, you must now select the sub-menu through a mouse click.

In the previous Web UI version, you only had to move the mouse pointer over the sub-menu.

### Row navigation, scrolling, and selection

These changes apply to Workspace and classic Web UI:

- If you press Tab or Shift+Tab to navigate a session's editable grid fields, the row header is skipped.
- If you press Ctrl+Spacebar, the current record in the grid is selected.
- If you press Tab in the last editable field of the last visible row, the next row is displayed.

### Bar charts

In Workspace and classic Web UI, bar charts are now displayed in 2D style instead of 3D style.