



Infor Web UI 10.2

Difference Study Infor Web UI 10.1 - 10.2

© Copyright 2012 Infor

All rights reserved. The word and design marks set forth herein are trademarks and/or registered trademarks of Infor and/or its affiliates and subsidiaries. All rights reserved. All other trademarks listed herein are the property of their respective owners.

Important Notices

The material contained in this publication (including any supplementary information) constitutes and contains confidential and proprietary information of Infor.

By gaining access to the attached, you acknowledge and agree that the material (including any modification, translation or adaptation of the material) and all copyright, trade secrets and all other right, title and interest therein, are the sole property of Infor and that you shall not gain right, title or interest in the material (including any modification, translation or adaptation of the material) by virtue of your review thereof other than the non-exclusive right to use the material solely in connection with and the furtherance of your license and use of software made available to your company from Infor pursuant to a separate agreement ("Purpose").

In addition, by accessing the enclosed material, you acknowledge and agree that you are required to maintain such material in strict confidence and that your use of such material is limited to the Purpose described above.

Although Infor has taken due care to ensure that the material included in this publication is accurate and complete, Infor cannot warrant that the information contained in this publication is complete, does not contain typographical or other errors, or will meet your specific requirements. As such, Infor does not assume and hereby disclaims all liability, consequential or otherwise, for any loss or damage to any person or entity which is caused by or relates to errors or omissions in this publication (including any supplementary information), whether such errors or omissions result from negligence, accident or any other cause.

Trademark Acknowledgements

All other company, product, trade or service names referenced may be registered trademarks or trademarks of their respective owners.

Publication Information

Document code	P3657A US
Release	10.2
Publication date	January 2012

Table of Contents

About this document

Chapter 1 Introduction to Web UI.....	7
Introduction to Web UI.....	7
Web UI user interface.....	7
Workspace-ERP Enterprise Plug-in user interface.....	9
Related documents.....	10
Chapter 2 Enhancements.....	11
Deployment changes.....	11
Client Java Configuration.....	11
Java Web Start.....	11
Usability improvements.....	11
Tooltip with complete text.....	11
Switch between sessions or tabs.....	12
Export to Excel.....	12
Keyboard shortcuts for Workspace-ERP Enterprise Plug-in.....	12
About dialog box.....	12
Grid columns.....	12
Show display-only fields.....	12

About this document

Document summary

This document provides an overview of the differences between Web UI 10.2 and Web UI 10.1, and describes the new functionality in Web UI 10.2.

To use this document, no detailed knowledge is required. Understanding the contents is easier if you are familiar with the overall Web UI functionality.

This document contains these chapters:

- Chapter 1, “Introduction to Web UI,” provides an overview of Web UI.
- Chapter 2, “Enhancements,” describes general functionality enhancements in the new Web UI version.

Comments?

We continually review and improve our documentation. Any remarks/requests for information concerning this document or topic are appreciated. Please e-mail your comments to documentation@infor.com.

In your e-mail, refer to the document number and title. More specific information will enable us to process feedback efficiently.

Customer Support

If you have questions regarding the Infor products described, go to Infor’s Customer Support portal at www.infor365.com.

- To access Infor365, go to www.infor365.com and log in. If you do not have an Infor365 account, click **Register now**, complete the registration form, and a login will be sent to you within 24 hours.
- To access Infor knowledgebases, documentation, downloads, communities, and incidents, click the appropriate link in the top menu of the home page.
- To find your local support phone number, click **Contact Infor** in the top right corner of the home page, enter a product name, and click **Search**.

Chapter 1

Introduction to Web UI

1

Introduction to Web UI

Web UI is a web-based user interface client that is the recommended user interface for these applications:

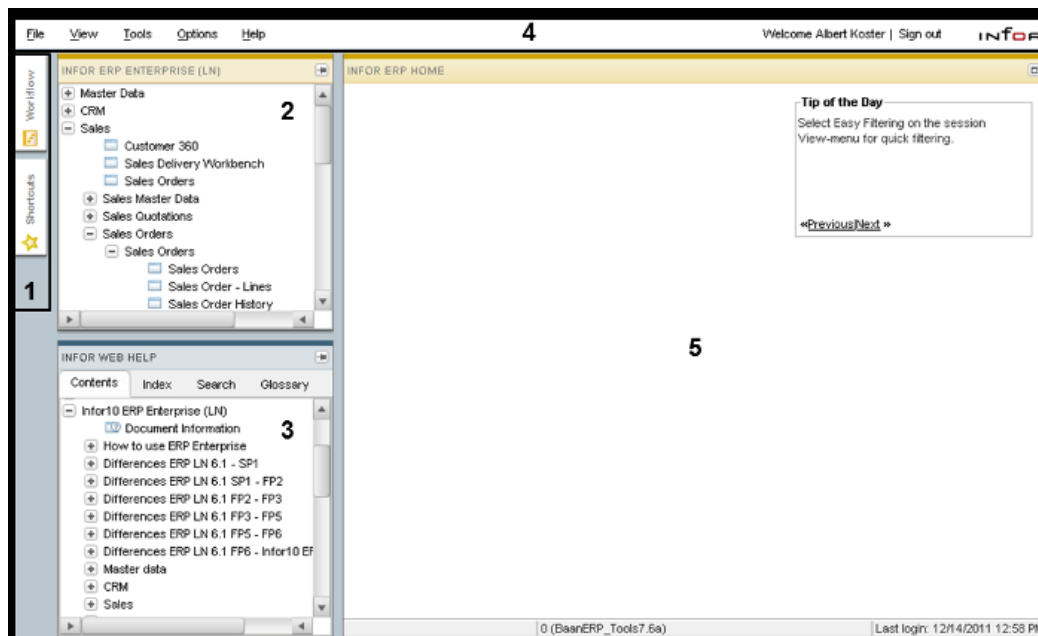
- Infor DEM
- Infor ERP applications:
 - Infor10 ERP Enterprise (LN)
 - Infor ERP Baan5.x
 - Infor ERP BaanIV
- Infor Workflow integration for Fujitsu v11
- Infor Web Help

Web UI supports BaanIV, Baan5.0c, and Infor10 ERP Enterprise (LN). Because of architectural differences between Infor releases, some features might be slightly different or might not be supported in earlier ERP versions.

In addition to the 'classic' Web UI, Infor10 ERP Enterprise (LN) users can use the Infor10 Workspace-ERP Enterprise Plug-in.

Web UI user interface

This diagram shows an example of the Web UI user interface:



This table describes the areas of the user interface:

Number in Diagram	Description
1	Hidden panels
2	Navigation panel for Infor ERP applications, such as Infor10 ERP Enterprise (LN)
3	Infor Web Help panel
4	Title bar
5	Work area

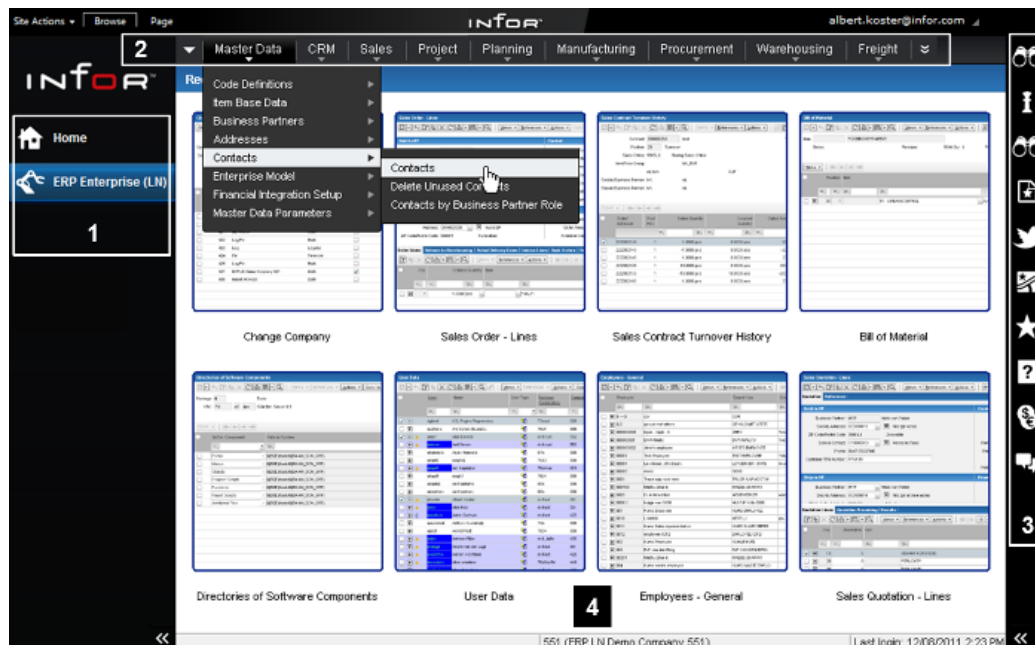
Note

All panels, except the work area, can be hidden and/or unhidden and moved to different positions.

For details on Web UI, see the Web UI online help.

Workspace-ERP Enterprise Plug-in user interface

This diagram shows an example of the Workspace-ERP Enterprise Plug-in user interface:



This table describes the areas of the user interface:

Number in Diagram	Description
1	Collapsible panel with icons to activate Infor10 applications, such as Infor10 ERP Enterprise (LN)
2	Menu bar with application navigation menus, Options menu, and a menu to switch between running sessions
3	Collapsible panel with icons to activate Web parts, such as Documentation , Shortcuts , and Maps
4	Application area with thumbnails of recently closed sessions

For details on the Workspace-ERP Enterprise Plug-in, see the Infor10 Workspace-ERP Enterprise Plug-in - User Guide (U9647 US).

Related documents

This table shows documents that are related to this difference study:

Title	Document Edition
Infor Web UI 10.2 Online Help	Not applicable
Infor10 Workspace-ERP Enterprise Plug-in - User D Guide (U9647 US)	
Infor Web UI - Installation and Configuration Guide N (U8715 US)	
<i>Infor Enterprise Server 8.7 - Release Notes (U9641 US)</i>	A
<i>Infor Enterprise Server 8.7 - Technical Notes (U9615 US)</i>	A
Infor10 ERP Enterprise Server Extensions (LN) Installation Guide (U9484 US)	F

This chapter describes the enhancements in the new release.

Deployment changes

Client Java Configuration

The **Java Heap Size** page in the Web UI Administration Console is replaced by the **Client Java Configuration** page.

In addition to the heap size, the Web UI administrator can specify the URL to download the client JRE. See the online help of the **Client Java Configuration** page.

Java Web Start

Java Web Start is not supported anymore. Web UI always runs in a browser window, for example if you start Web UI through a desktop shortcut or through the Open Profile functionality.

The rationale is as follows: running Web UI as a Java Web Start application has a negative impact on future supportability of Web UI.

More specifically and in technical terms, the reason is as follows: if Web UI runs as a Java Web Start application, rendering of reports in the Display Browser device or rendering of admin pages requires the JDIC third party component. This component is not properly supported in Windows 7. As more and more customers will migrate to Windows 7, continued support of Java Web Start for Web UI poses a growing risk for all Web UI users.

Usability improvements

Tooltip with complete text

If the text in a display field is cut off, a tooltip shows the entire text.

The latest Infor Enterprise Server (LN) version must be installed on the ERP Enterprise server.

Switch between sessions or tabs

You can use these keyboard shortcuts to switch between running sessions, session tabs, and DEM processes:

- Ctrl+Tab
- Ctrl+Shift+Tab

See the Web UI online help or the Infor10 Workspace-ERP Enterprise Plug-in - User Guide (U9647 US).

Export to Excel

The **File location** field in the export sessions shows the Web UI client's actual temporary directory instead of the fixed C : \TEMP directory.

The latest Infor Enterprise Server (LN) version must be installed on the ERP Enterprise server.

Keyboard shortcuts for Workspace-ERP Enterprise Plug-in

You can use various new keyboard shortcuts in the Workspace-ERP Enterprise Plug-in.

See the Infor10 Workspace-ERP Enterprise Plug-in - User Guide (U9647 US).

About dialog box

The Bshell environment commands of the selected user profile are displayed in the **About** dialog box.

See the Web UI online help or the Infor10 Workspace-ERP Enterprise Plug-in - User Guide (U9647 US).

Grid columns

You can double-click the column separator in a grid header to change the column width to automatically fit the contents.

See the Web UI online help or the Infor10 Workspace-ERP Enterprise Plug-in - User Guide (U9647 US).

Show display-only fields

You can right-click on any location in a session to locate empty display-only fields. A dashed box is displayed around each display-only field.

See the Web UI online help or the Infor10 Workspace-ERP Enterprise Plug-in - User Guide (U9647 US).