

## ABOUT THIS DOCUMENT

The document explains about the custom session created to load **Production Orders**. Here you can find the work instructions to execute the migration. For clarifications, please contact [Senthil.Parameswaran@infor.com](mailto:Senthil.Parameswaran@infor.com)

## PATCH INSTALLATION INSTRUCTIONS

- (1) Download the Patch (**235797\_14dec10**), to LN Server.
- (2) Start Session **ttiex1284m000 (Import Patch)**.

**Import Patch**

Pathname Patch File \* d:\ERPLN\bse\tmp\migration\Patches\235797\_14dec10

Path Runtime Dictionary \${BSE}/application

Extract Only

Path to extract to

Options

Overwrite

Overwrite Alignment

Delete patch file after installation

Write software components in other Package VRC

VRC SCAU 22 post

ttiex1284m000 000

- (3) Create Runtime Data Dictionary (Forms & Menus) (**ttadv5214m000**)

**Create Runtime Data Dictionary (Forms and Menus)**

Selection Range

From To

Package bc - bc

Version SCAU - SCAU

Release 22 - 22

Customer post - post

Language - z

Forms

Menus

Options

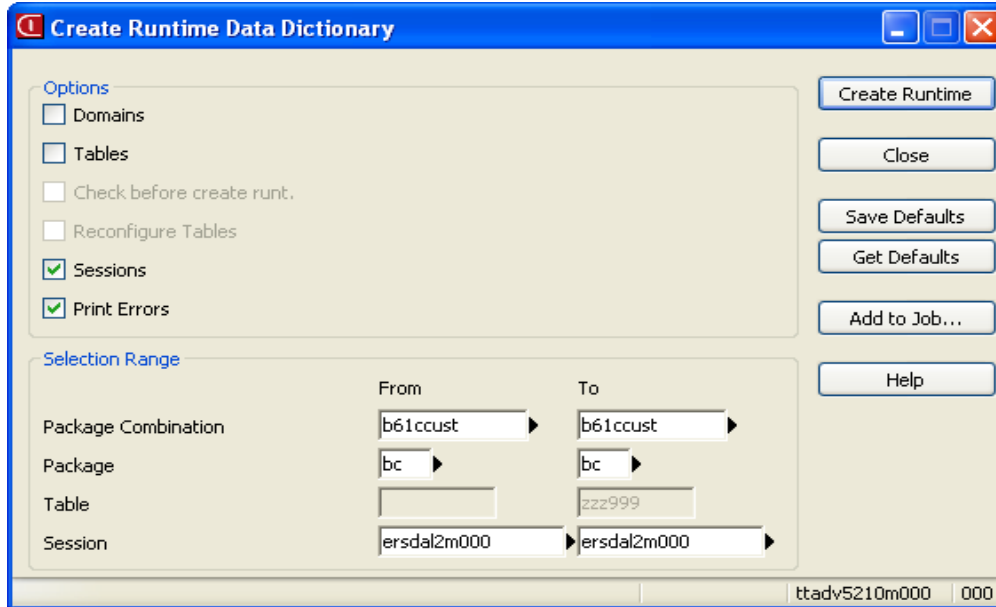
Dump Only forms/menus in VRC

Multi level VRC Depth

Print Errors

ttadv5214m000 000

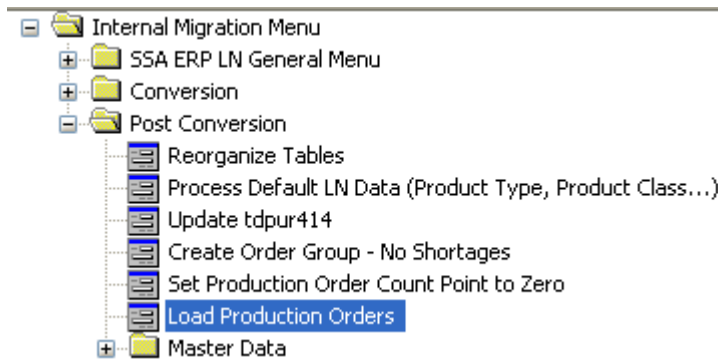
- (4) **Create Runtime Data Dictionary (ttadv5210m000)**. Here you should choose the option “Sessions”. No need to do it for tables and domains.



- (5) Copy the **PO.xml** present in this patch to a directory in the LN server. This file is an input the Production Order Loading session.

## LOAD PRODUCTION ORDERS

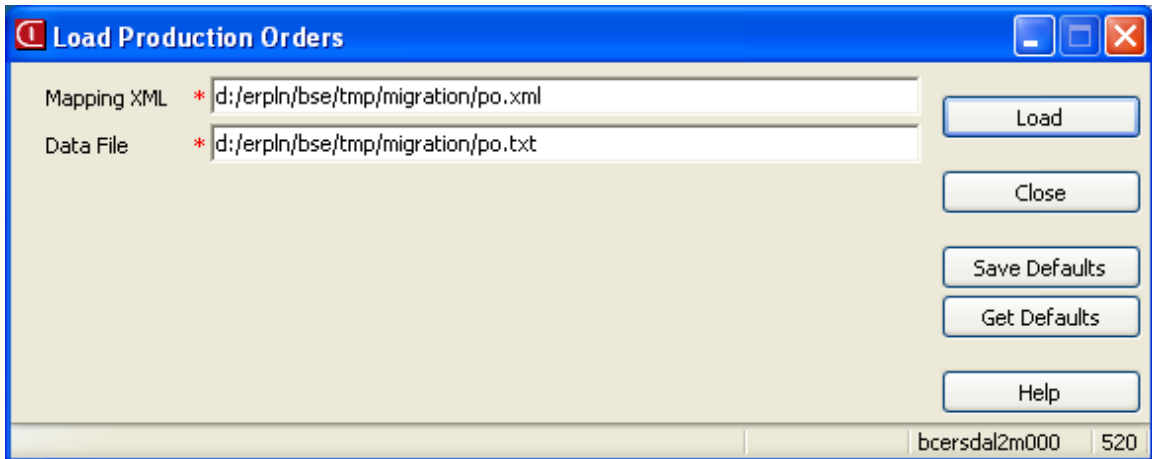
Production orders are loaded using a custom LN session; **Load Production Orders (bcersdal2m000)**. This session is located in Menu as, **Internal Migration Menu → Post Conversion → Load Production Orders**.



Follow the below step to create the Production orders:

- (1) Change the company to Migration Company, say **520**.
- (2) Copy the **PO.XML**, present in this patch to LN Server, say to directory **D:\ERPLN\bse\tmp\migration**. This xml file contains the incoming data file details and how each file columns are mapped to LN table fields. You can view this file, but do not modify the contents, that will affect the loading process.

- (3) Copy the production order file, say **PO.txt**, to LN Server, say in directory **D:\ERPLN\bse\tmp\migration**.
  - a. This file should contain 6 columns delimited by "|". **[5.1a Order Number|Item|OrderedQuantity|RoutingCode|DeliveryDate|Workcenter]**
  - b. Column heading should not be present in the file
  - c. Delivery Date should comes in format: **MM/DD/YYYY HH:MI:SS**.
  - d. For non-project items **9** spaces are expected in front of item code.
- (4) Start session: **Load Production Orders (bcersdal2m000)**.



- (5) In the field **File Mapping XML**, enter the value, **d:\ERPLN\bse\tmp\migration\po.xml**.
- (6) In the field **Data File**, enter the value, **d:\ERPLN\bse\tmp\migration\po.txt**. I.e., name of the production order file.
- (7) Now press the button **Load**. This will start the loading process. Once the loading process is over, you can see four files in your data file directory, I.e., **d:\ERPLN\bse\tmp\migration\**
  - a. **po.txt.log**: This is the log file containing the loading errors per row if any. The log file look like below...

```

2      ERROR: The Width field must be empty in Estimated and Actual Material Costs.(ttstps0041)
2      INFO: Hint: Error Caused in Library:ticst001.widw not valid, at Line:0()
2      INFO: Above error(s) are from table: tisfc001()
2      100099002|      001A0005-5|1|001|01/06/2010 00:00:00|DFK520
6      ERROR: Subcontracting rate for supplier 000001 and task 45000035 not found.(ticprdl1200129)
6      ERROR: The Work Center field has an invalid value in Production Order Operations.(ttstps0039)
6      INFO: Hint: Error Caused in Library:tisfc010.cwoc not valid, at Line:0()
6      INFO: Above error(s) are from table: tisfc001()
6      100099006|      015U0069-26|1|001|01/10/2010 00:00:00|REVIEW

```

The first column shows the row number in the data file, which is not loaded. The lines starting with the ERROR, shows the error because of which the data is not loaded. The lines starting with INFO, is mainly for the developer, which indicates which LN table and library caused the error. After the INFO lines you can see the actual data row, as present in the data file.

- b. **po.txt.bad**: This file contains the data rows that is not loaded because of errors
- c. **po.txt.gud**: This file contains the data rows that are successfully loaded to LN.
- d. **po.txt.rpt**: This is the report file which shows 5.1a Production Order versus the LN Production order created. It is a comma delimited file containing: **WorkCenter, 51aOrder, LNOrder**.

