



▶▶ SSA® Technology Architecture Adapter for ERP

SSA® Technology Architecture
Adapter V2.6 for ERP

PMC Setup Guide

© Copyright 2004 by SSA Global Technologies™, Inc.

All rights reserved. No part of this publication may be reproduced, stored in a retrieval system, or transmitted in any way or by any means, including, without limitation, photocopying or recording, without the prior written consent of SSA Global Technologies, Inc.

Important Notices

The material contained in this publication (including any supplementary information) constitutes and contains confidential and proprietary information of SSA Global Technologies, Inc.

By gaining access to the attached, you acknowledge and agree that the material (including any modification, translation or adaptation of the material) and all copyright, trade secrets and all other right, title and interest therein, are the sole property of SSA Global Technologies, Inc. and that you shall not gain right, title or interest in the material (including any modification, translation or adaptation of the material) by virtue of your review thereof other than the non-exclusive right to use the material solely in connection with and the furtherance of your license and use of software made available to your company from SSA Global Technologies, Inc. pursuant to a separate agreement ("Purpose").

In addition, by accessing the enclosed material, you acknowledge and agree that you are required to maintain such material in strict confidence and that your use of such material is limited to the Purpose described above.

Although SSA Global Technologies, Inc. has taken due care to ensure that the material included in this publication is accurate and complete, SSA Global Technologies, Inc. cannot warrant that the information contained in this publication is complete, does not contain typographical or other errors, or will meet your specific requirements. As such, SSA Global Technologies, Inc. does not assume and hereby disclaims all liability, consequential or otherwise, for any loss or damage to any person or entity which is caused by or relates to errors or omissions in this publication (including any supplementary information), whether such errors or omissions result from negligence, accident or any other cause.

Trademark Acknowledgments

SSA® Baan IV is a registered trademark, and SSA Global™ and SSA Global Technologies, Inc. are trademarks of SSA Global Technologies, Inc. in the United States and/or other countries.

Microsoft®, Windows®, Windows NT® and the Windows logo are registered trademarks, and Windows Server™ is a trademark of Microsoft Corporation in the United States and/or other countries.

IBM® and AS/400® are registered trademarks, and iSeries™ is a trademark of International Business Machines Corporation in the United States and/or other countries.

All other company, product, trade or service names referenced may be registered trademarks or trademarks of their respective owners.

Publication Information

Document code :
Release : Installation Guide
Document title : SSA® Technology Architecture Adapter V2.6 for ERP
Publication date : January 05

Table of Contents

Chapter 1	Installation Instructions	1-1
	Prepare the SSA ERP environment	1-2

About this Guide

This document describes how to setup PMC for the Technology Architecture Adapter for ERP.

This document contains the following chapter:

Chapter 1, "PMC setup Instructions," describes the steps to setup PMC for the Technology Architecture Adapter.

Questions?

For a faster response to questions on how to use the Technology Architecture Adapter, contact product support.

For information about product support locations, programs, and current releases, refer to the SSA Global product support Web site at:
<http://OnePoint.SSAGlobal.com>.

Send us your comments

We continually review and improve our documentation. Any remarks/requests for information concerning this document or topic are appreciated. Please e-mail your comments to kd@baan.com.

In your e-mail, refer to the document number and title. More specific information will enable us to process feedback efficiently.

Chapter 1

PMC setup Instructions

1

This chapter includes information on how to setup PMC for the Technology Architecture Adapter. This chapter describes the following topic:

- Preparing the SSA ERP environment

Prepare the SSA ERP environment

- 1 Install the Technology Architecture Adapter 2.6_a version as described in the documentation delivered on the installation CD (Document U8523A US).
- 2 One additional VRC needs to be created for the Technology Architecture Adapter. The VRC needs to be derived from VRC 2.6_a created in step 1. The version of the provided infrastructure is 2.6. We recommend you to use this version indication in the VRC name. Start session Maintain Package VRC's (ttadv1111m000) and insert the Package VRC, for an example see the picture below.

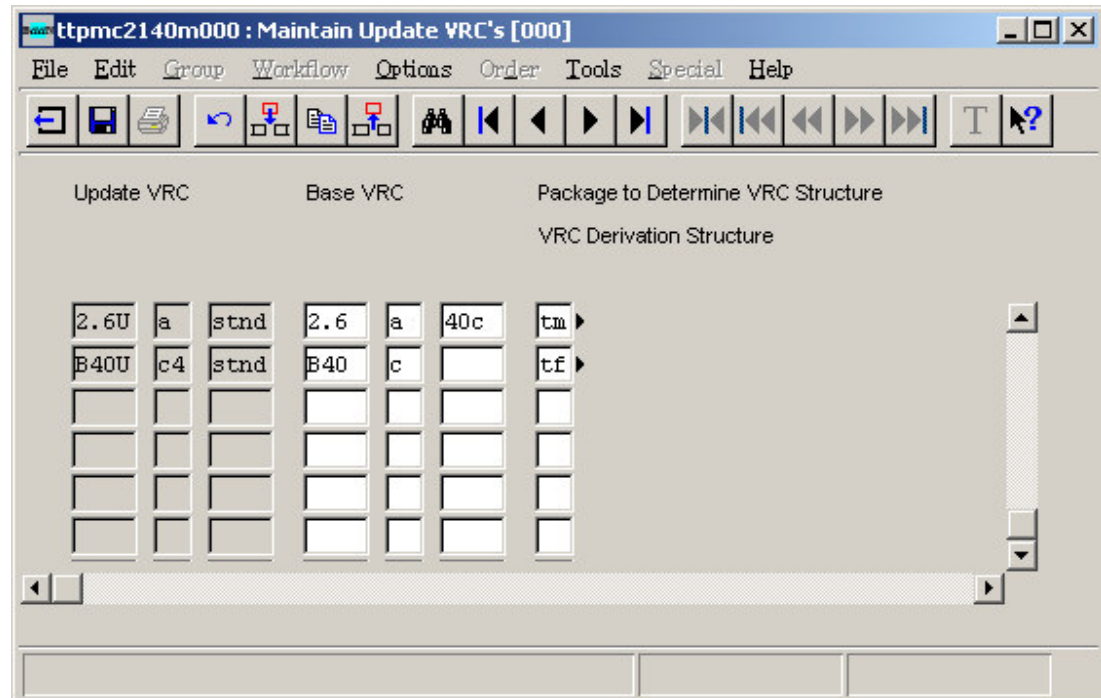
The screenshot shows a software window titled "ttadv1111m000 : Maintain Package VRC's [000]". The window has a menu bar with "File", "Edit", "Group", "Workflow", "Options", "Order", "Tools", "Special", and "Help". Below the menu bar is a toolbar with various icons for file operations and navigation. The main area of the window contains a form for configuring a Package VRC. The form has the following fields:

- Package:** A dropdown menu showing "tm" and "OpenWorld Middleware".
- Version:** A text input field containing "2.6U".
- Release:** A text input field containing "a".
- Customer:** A text input field containing "stnd".
- Description:** A text input field containing "OW 2.6".
- Status:** A dropdown menu showing "Developing".
- Derived from:** A section containing three fields:
 - Version:** A dropdown menu showing "2.6".
 - Release:** A text input field containing "a".
 - Customer:** A text input field.
- Integration with:** A section containing two fields:
 - Package VRCs in:** A text input field.
 - Pack.Combination:** A dropdown menu.

- 3 Start session Maintain Directories of Software Components (ttadv1115m000) to create directories for the new Package VRC's.
- 4 The New Package VRC (2.6U_a_stnd in the example) must be included in your current Package Combination. Start session Maintain Packages by Package Combination (ttaad1121m000) and insert the tm package in your current Package Combination. Click Rebuild DD to Rebuild the Runtime Data Dictionary.
- 5 Logout and login again to activate the new Runtime Data Dictionary. Create tables in the tm package in the Create Tables (ttaad4230m000) session. Create tm tables for the company from which you want to run Technology Architecture Adapter for ERP.
- 6 All Technology Architecture Adapter updates are delivered in PMC format. Therefore the derived VRC need to be defined as Update VRC. Start session Maintain Update VRC's (ttpmc2140m000) and define the Base VRC for the derived VRC created before. For the derived VRC, the Base VRC must be

ERP Version	Base VRC
Baan 40c	2.6 a 40c
Baan 50b	2.6 a 50b
Baan 50c	2.6 a 50c
Baan 52a	2.6 a 52a
SSA ERP LN	2.6 a tm

See the picture below for the update VRC definition for the example VRC's for package tm.



- 7 For each PMC solution you need to copy the PMC dump to the appropriate folder on the Baan server. After that the normal procedure the import PMC solutions need to be executed. The procedure starts with session Scan Solution File (ttpmc2200m000 or ttpmc2200s000). During the procedure the update VRC's defined above needs to be referred to. In our example 2.6U_a_stnd, for the Technology Architecture Adapter components.
- 8 Don't install the Technology Architecture Adapter as described in point 1 after PMC solutions are installed.