

# Specific Installation Guide – Updates



---

Copyright © 2008 Infor

All rights reserved. The word and design marks set forth herein are trademarks and/or registered trademarks of Infor and/or related affiliates and subsidiaries. All rights reserved. All other trademarks listed herein are the property of their respective owners.

### Important Notices

The material contained in this publication (including any supplementary information) constitutes and contains confidential and proprietary information of Infor.

By gaining access to the attached, you acknowledge and agree that the material (including any modification, translation or adaptation of the material) and all copyright, trade secrets and all other right, title and interest therein, are the sole property of Infor and that you shall not gain right, title or interest in the material (including any modification, translation or adaptation of the material) by virtue of your review thereof other than the non-exclusive right to use the material solely in connection with and the furtherance of your license and use of software made available to your company from Infor pursuant to a separate agreement ("Purpose").

In addition, by accessing the enclosed material, you acknowledge and agree that you are required to maintain such material in strict confidence and that your use of such material is limited to the Purpose described above.

Although Infor has taken due care to ensure that the material included in this publication is accurate and complete, Infor cannot warrant that the information contained in this publication is complete, does not contain typographical or other errors, or will meet your specific requirements. As such, Infor does not assume and hereby disclaims all liability, consequential or otherwise, for any loss or damage to any person or entity which is caused by or relates to errors or omissions in this publication (including any supplementary information), whether such errors or omissions result from negligence, accident or any other cause.

### Trademark Acknowledgements

Infor and Infor Global Technologies are trademarks or registered trademarks of Infor Global Technologies, Inc. in the United States and/or other countries..

Baan is a registered trademark of Infor Global Technologies, Inc. in the United States and/or other countries.

All other company, product, trade or service names referenced may be registered trademarks or trademarks of their respective owners.

### Publication Information

**Document code:** U9497B US

**Release:** Infor ERP LN 6.1

**Publication date:** November 08

---



---

# Table of Contents

<b>Chapter 1</b>	<b>Introduction .....</b>	<b>1-1</b>
	Description Installable Units .....	1-2
	Staging Wizard.....	1-2
	Installation Wizard.....	1-2
	ES Porting Set .....	1-2
	Enterprise Server PMC Solutions .....	1-2
	Enterprise Server AddOn PMC Solutions .....	1-3
	Solution License Manager .....	1-3
	ES Application Service Manager.....	1-3
	ERP LN PMC Solution .....	1-3
	ERP LN 6.1 Standard master, Sample, and Demo data .....	1-3
	ERP LN 6.1 Demo, Enterprise Business and Master Data Model.....	1-4
<b>Chapter 2</b>	<b>Pre-requisites .....</b>	<b>2-1</b>
	Prerequisites for an update to Enterprise Server 8.5 .....	2-2
	Porting Set .....	2-2
	Solution License Manager (SLM).....	2-3
	To update an ERP LN 6.1 SP0 environment .....	2-3
	To update an ERP LN 6.1 SP1/ES7 environment.....	2-3
	To update an ERP LN 6.1 FP2/ES8.2 environment .....	2-3
	To update an ERP LN 6.1 FP3/ES8.3 environment .....	2-4
	To update an ERP LN 6.1 FP3/ES8.4 or ES8.4.1 environment .....	2-4
	To update an ERP LN 6.1 FP4/ES8.4.2 environment .....	2-4
	Enterprise Server AddOn PMC Solutions .....	2-4
	Infor Adapter 2.7 or earlier for ERP LN .....	2-5

---

Update Adapter version 2.6 or 2.7 .....	2-5
No update to the new Adapter .....	2-6
Update language Packs .....	2-6
<b>Chapter 3    Update process .....</b>	<b>3-1</b>
Update process .....	3-1
The Staging Wizard .....	3-1
The Installation Wizard .....	3-3
<b>Chapter 4    Post-Installation Steps .....</b>	<b>4-1</b>
Solution number 233336 .....	4-1
SP0/SP1 Solution number 206321 .....	4-1
Upgrade companies to the new Feature Pack level .....	4-1
Convert companies to the new Feature Pack level .....	4-3
To configure shared memory after the Enterprise Server update .....	4-5
Table sharing data .....	4-7
<b>Chapter 5    Feature Packs and Online Help Installation.....</b>	<b>5-1</b>
Online help FP5 .....	5-1
<b>Chapter 6    To Update a Porting Set .....</b>	<b>6-1</b>
Infor ERP LN on a Microsoft Windows Server Cluster .....	6-1
<b>Chapter 7    Update a Language in ERP LN.....</b>	<b>7-1</b>
The language packs.....	7-1
English as fall back language.....	7-1
ODM initial setup.....	7-1
The installation process .....	7-2
<b>Chapter 8    To Migrate Data Languages .....</b>	<b>8-1</b>
To migrate data languages .....	8-1
<b>Appendix A   New Tables .....</b>	<b>A-1</b>
<b>Appendix B   Error Messages .....</b>	<b>B-1</b>
Error messages to be ignored.....	B-1

---

No definition in definition file datrg100 and datrg125 .....	B-1
daxch021091 R0 0 Reconfiguration failed (error 506) .....	B-1
Unknown program domain ttdsk.title.....	B-2
Log messages you can ignore .....	B-2
Error messages in log file with unexpected company number .....	B-2

---





---

## About this Guide

This document describes the update procedure of an existing Infor ERP LN environment with a newer version of the following:

- Enterprise Server, known as tools.
- Enterprise Server and ERP LN 6.1, known as applications.

This document is intended for ERP LN database administrators, application and system administrators.

To understand this document, knowledge of how ERP LN is structured with the following is advised:

- Package VRCs
- Package combinations
- Derived-from structure

**Note:**

This document also applies to Infor ERP Baan 5.2 environments already running on Porting Set 8.4.

### Send us your comments

We continually review and improve our documentation. Any remarks/requests for information concerning this document or topic are appreciated. Please e-mail your comments to [documentation@infor.com](mailto:documentation@infor.com).

In your e-mail, refer to the document code and title. More specific information will enable us to process feedback efficiently.

.

---



This chapter describes the Installable Units used for the update to Enterprise Server 8.5.

For information about a new ERP LN installation process, refer to *Overall Install Guide for Infor ERP LN Products – New installation* (U8204 US).

For this update, the following Installable Units are important:

### **Mandatory**

- Staging Wizard.
- Installation Wizard.
- Enterprise Server Porting Sets.
- Enterprise Server PMC Solution.
- Enterprise Server AddOn PMC Solution.

### **Optional**

- Solution License Manager. If update is needed, see technical notes.
  - ES Application Service Manager.
  - ERP LN PMC Solution.
  - ERP LN 6.1 Demo Data.
    - ERP LN 6.1 Demo Data.
    - ERP LN 6.1 Sample Data.
    - ERP LN 6.1 Standard Master Data.
  - ERP LN 6.1 Enterprise Business Model.
  - ERP LN 6.1 Master Data Implementation Model.
-

**Do not stage the following IUs**

- ERP LN 6.1
- Enterprise Server

These IUs are the initial base software and are already installed during the very first installation of ERP LN. If you want to install them again, the Installation Wizard will run a check and warn you that this is not possible.

## Description Installable Units

### Staging Wizard

This wizard must be used to build a staging area. A staging area is a storage place for various Installable Units before the actual installation can be performed.

**Warning:** For each major update, always create a new staging area. This update is an example of a major update.

### Installation Wizard

This wizard must be used to perform the installation or update of the ERP LN environment based on the Installable Units available in the staging area.

### ES Porting Set

The Enterprise Server virtual machine, known as binaries. This is the OS dependant basis on which the ERP LN application runs.

### Enterprise Server PMC Solutions

The set of PMC solutions needed to update to the last version of Enterprise Server. Updating can be done for all previous versions of Enterprise Server, using only this Installable Unit. Next to the latest Enterprise Server version, this Installable Unit contains all preceding versions.

---

## Enterprise Server AddOn PMC Solutions

Enterprise Server AddOn PMC Solutions are needed to update to the latest version of Enterprise Server AddOn. Updating can be done for all previous versions of Enterprise Server, using only this Installable Unit. Next to the latest version of Enterprise Server AddOn, this Installable Unit contains all preceding versions.

It is recommended to install this Installable Unit to keep Enterprise Server and Enterprise Server AddOn at the same version level.

This Installable Unit contains the package da, nt, ta and tm.

## Solution License Manager

The Solution License Manager installs or updates the SLM client and SLM server on the system specified for installation.

## ES Application Service Manager

ES Application Service Manager is mainly used with Infor Technology Architecture to manage the number of Adapters for ERP servers related to the load. It can also be used to manage ERP LN jobs.

Installation of this Installable Unit is optional.

## ERP LN PMC Solution

ERP LN PMC Solutions are needed to update ERP LN 6.1 (applications) to a new Feature Pack. For example, if you update ERP LN 6.1 to the new Feature Pack, the appropriate version of this Installable Unit must be installed. Update is possible in one installer run.

## ERP LN 6.1 Standard master, Sample, and Demo data

### **ERP LN 6.1 Standard master data**

- Company 000:  
Currencies and domain segmentation.
  - Company 050:  
Basic generic master data you can use as a basis to set up production companies.
-

**ERP LN 6.1 sample data**

Company 070: Example master data, such as sales types, which is not intended as a basis for new companies.

**ERP LN 6.1 demo data**

This build provides a demo company 090 and company 091 with limited transactional data to show functionality of ERP LN 6.1.

**Note1:** Only reinstall the demo companies if ERP LN 6.1 is updated. These demo companies belong to a specific version of ERP LN 6.1; therefore, if ERP LN 6.1 is not updated, do not reinstall the demo company data.

**Note2:** If you plan to install the demo companies, it is recommended not to install additional solutions during the initial installation of the featurepack. This is because these new solutions can introduce metadata changes for which the demo companies are not fitted. First, finish the installation, including the installation of the demo companies, and then install the additional solutions. The reconfiguration process, as part of the install of the additional solutions, will automatically bring the demo companies on the correct metadata level.

**ERP LN 6.1 Demo, Enterprise Business and Master Data Model****ERP LN Enterprise Business Model**

Contains functions and processes based on the relevant distribution and production typologies supported in the ERP LN functionality. If you select the typologies relevant for your business, you can use the ERP LN functionality.

**Note:** You must purchase the Enterprise Business Model with the license code provided by Infor.

**ERP LN 6.1 Implementation Master Data Model**

The Implementation Master Data Model is intended to function as a guide during the setup of a Company during implementation.

---

This chapter describes the prerequisites to update to Enterprise Server 8.5.

For details on supported platforms and installation related issues, refer to *Infor Enterprise Server 8.5 Technical Notes* (U9423 US).

For information about updating an environment with PMC solutions, refer to *Infor ERP LN 6.1 Administrator's Guide* (U8854 US). In the “ERP LN Software maintenance” chapter, a section explains the PMC recipient procedure.

On your system go to **Tools -> Software installation -> Miscellaneous-> Recipient**.

**Warning:** When you install an ERP LN 6.1 update, ensure at least the same level of Enterprise Server is already installed or installed during the same installation run. For more information, check the following table.

Supported Enterprise Server versions.

Enterprise Server	Tools version (tt)	Minimal Porting Set
8.5	7.6_a5	8.5a
8.4.2	7.6_b4 + sol 230022	8.4c
8.4.1	7.6_b4	8.4b
8.4	7.6_a4	8.4a
8.3	7.6_a3	8.3a
8.2	7.6_a2	8.2b
7	7.6_a1	7.6a.01
SP0	7.6_a	7.6a

Supported Enterprise Server version by ERP LN 6.1 feature pack.

ERP LN	Minimum ES version
ERP LN 6.1 SP0	SP0
ERP LN 6.1 SP1	ES 7
ERP LN 6.1 FP2	ES 8.2
ERP LN 6.1 FP3	ES 8.3
ERP LN 6.1 FP4 *	ES 8.4.2
ERP LN 6.1 FP5	ES 8.5

**\*= Limited Available version of ERP LN 6.1**

## Prerequisites for an update to Enterprise Server 8.5

### Note:

It is recommended you regularly install available Enterprise Server solutions; therefore, the environment is always up-to-date with the latest patches.

### Porting Set

**Warning:** For this version, a new vcredist\_x86.exe has been distributed for Windows only. For details on what to do with this executable, on the installation media, look at the file **VCRedist.Readme**.

---



## Solution License Manager (SLM)

Before you can start the update to Enterprise Server 8.5, you must update your SLM Server and Client to version 7.1.

Before the update, you must also add the **Infor365 maintenance contract product ID (10365)** to the SLM license. If you do not add this ID, you will receive a warning during installation and ERP LN will be blocked after the installation has finished.

### To update an ERP LN 6.1 SP0 environment

**Warning:** If the environment is a Windows environment and the porting set number is 7.5a PA.2525, the porting set belonging to Enterprise Server 8.4.1 must be installed before the solutions are installed. This 7.5a PA.2525 porting set contains an error, which will create tables with wrong columns during the reconfigure.

You must have the following PMC solutions installed:

- 200846
- 213846
- 218492
- 220846

**Note:** If the PMC session “Download, Scan and Connect Solution (Multi-Level)” (ttpmc2210s000) does not work, install solution 144079.

### To update an ERP LN 6.1 SP1/ES7 environment

You must have the following PMC solutions installed:

- 200846
- 213846
- 218492
- 220846

### To update an ERP LN 6.1 FP2/ES8.2 environment

You must have the following PMC solutions installed:

- 200874
-

**Note:** Note the pre-installation instructions and ensure you install this solution (200874) as the last solution in a run. Directly after this solution, the post-installation instructions must be followed-up; if not, the installation of subsequent solutions or the create runtime for tools will fail.

- 200882
- 213846
- 218492
- 220846

To update an ERP LN 6.1 FP3/ES8.3 environment

You must have the following PMC solutions installed:

- 213846
- 218492
- 220846

To update an ERP LN 6.1 FP3/ES8.4 or ES8.4.1 environment

There are no pre-requisites for this update.

To update an ERP LN 6.1 FP4/ES8.4.2 environment

There are no prerequisites for this update.

## Enterprise Server AddOn PMC Solutions

From version 8.4.1 until 8.5, this Installable Unit contains the packages da, nt, ta, and tm. Previous versions only contained the package tm.

The packages da and nt were part of different Installable Units, but now the default update vrc for these packages has changed. Pay attention after the update to the Package Combinations, which must be used for these packages. The packages in this version have been delivered in total; therefore, do not take older versions of these packages.

During installation, these packages can only be added to existing Package Combinations; therefore, if you specified a new Package Combination to be created for the latest version during the installation process, this Package Combination cannot be extended with these packages. If necessary, after the

---

installation has finished, manually add these packages to a Package Combination (session “Packages by Package Combination” (ttaad1121m000)).

PMC Base vrc's are as follows:

Package	VRC
da	7.6 a5 ta
nt	7.6 a5 ta
ta	7.6 a5 ta
tm	7.6 a5 ta

Default or recommended update vrc: 7.6U a5 ta

## Infor Adapter 2.7 or earlier for ERP LN

This note applies only to customers who use the Adapter 2.7 for ERP LN or earlier; the note is not relevant for version 8.4 and higher.

From version ES8.4, the Adapter for ERP LN is delivered as part of the ERP LN application itself, as part of the Porting Set and Enterprise Server AddOn.

Because of the new delivery, conflicts with existing installations, such as 2.7 or 2.6, can arise. The two options are to update to the new version, or keep using the old version.

For more information, refer to *Configuration Guide for Adapters and Connectors* (U8622 US).

### Update Adapter version 2.6 or 2.7

To update the Adapter, complete the following steps:

- 1 Install the Infor Enterprise Server AddOn PMC solutions 8.5.
  - Installing the Infor Enterprise ServerAddOn delivers all ERP LN sessions and API, such as the following:
    - tmboaserver
    - tmbdeserver
- 2 In \$BSE/java, remove the following files:

- b3.jar
- owxml.jar

### No update to the new Adapter

This process consists of the following actions:

- 1 Do not select the Enterprise Server AddOn to install; this is only possible if update of packages da and nt are not needed. Ensure the relevant package combinations still point to the old version of the package.
- 2 After the Enterprise Server AddOn installation, in \$BSE/java, remove the following files:
  - ow.jar
  - ow3p.jar
  - owconfig.properties..

### Update language Packs

If you decide to install an extra language, ensure that this language pack is available. You cannot install language packs of earlier versions. Refer to Chapter “Update a Language in ERP LN” in this document.

This Chapter can be used to update the following:

- ES 8.5 (tools).
- An ERP LN 6.1 environment to FP5 (application) and ES 8.5 (tools).

**Note:**

On the Online Support Web site at [www.infor365.com](http://www.infor365.com), always check the Last Minute Solutions about the product you want to install

## Update process

### The Staging Wizard

- 1 Insert the Enterprise Server installation media Enterprise Server 8.5 software. The staging area starts.
- 2 Click **Staging Wizard**. If your Web browser asks whether you want to start StagingWizard.bat, click **Yes**. The **Welcome** dialog box will appear. If the dialog does not appear, check your taskbar. The dialog box can be minimized.
- 3 Click **Next**.
- 4 Specify the destination directory for the staging area, Default path is: c:\Program Files\Infor\StagingArea. This directory must be a new directory.
- 5 Click **Next**. A scan of the media now starts. After the scan, a dialog box appears in which you select the appropriate installable units.

The following units are required:

---

- Infor Staging Wizard.
- Infor Installation Wizard.
- Infor ES Porting Set, (select the appropriate platform).
- Infor Enterprise Server PMC Solutions.
- Infor Solution License Manager x.x.x.x, if you have deployed the License manager on the same server as ERP LN 6.1.

Stage the following unit in case you use this software:

- ES Application Service Manager x.x.
- 6 Select **Do Not Start Installation Wizard** if you also want to stage the Installable Units of ERP LN 6.1, and then click **Next**. Otherwise, finish the procedure for the tools and proceed with the following section “The Installation Wizard”.
  - 7 Click **Next** on summary and confirm overwrite.
  - 8 Click **Finish**.
  - 9 Insert the ERP LN 6.1 medium and click **Staging Wizard**. The **Welcome** dialog box appears.
  - 10 Click **Next**.
  - 11 Supply the same destination directory you specified in Step 4 and click **Next**. The scan of the medium now starts.
  - 12 Select the appropriate installable units and click **Next**. For more information on these installable units consult the previous section.

The following units are minimally required:

- Infor ERP LN PMC 6.1 Solution.

The following units in case you use this software:

- ERP LN Enterprise Business Model.
- ERP LN Master Data Implementation Model.

Before you can install the new dem models, you must first remove the old dem models.

The question “Do you want to start the Installation Wizard?” appears.

- 13 Click **Yes**.
  - 14 Click **Next**. The copy process of the software to the staging area now runs.
-

## The Installation Wizard

To start the Installation Wizard, complete the following steps:

- 1 Stop the ERP environment by using \$BSE/etc/rc.stop (UNIX), or Infor Manager (Windows). All other binaries running against this environment must also be stopped; otherwise, the Installation Wizard cannot replace them.  
**Note 1:** For an update of the Windows Porting Set, the eventviewer must be closed.  
**Note 2:** For an update on Unix, you must also stop the baanlogin process.
- 2 If not yet started, start the Installation Wizard by running <Staging Area>/Start/InstallationWizard.bat.
- 3 In the **Welcome** dialog box, click **Next**.
- 4 In the **Environment** dialog box, specify the environment to be updated. Click **Next**.
- 5 Select the required installable units, mentioned earlier and click **Next**.
- 6 Select the appropriate porting set. Click **Next**.
- 7 If necessary, provide the host name and logon information. Click **Next**.
- 8 If necessary, enter the destination directory. Click **Next**. A warning message appears that informs you all users must leave the Infor ERP environment before you continue this update.
- 9 Click **OK**. During this step, ERP LN checks if the selected environment is available for update. A warning can appear about still running binaries.
- 10 If you selected the Installable Unit ERP LN Enterprise Business Model, the Company dialog box will appear.
- 11 Enter the company number where the model must be installed. Click **Next**.
- 12 Depending on how many Base VRCs the staged PMC solutions contain, the **Select Base VRCs for PMC Solutions** dialog box can appear. Select the correct Base VRCs, and click **Next**.
- 13 The **Select an Update VRC for PMC Solutions** dialog box will appear.

Select the Base VRC for update, or create a New Update VRC. If you create a new Update VRC, enter the VRC name in the following fields:

- Version
- Release
- Customer

Click **Add**. The **Package Combination** and **Description** fields become available.

---

For more information on this dialog, see online help.

**Note:** You cannot add a Package Combination in all situations; this happens if only packages are added or updated that cannot run standalone. For those packages, it is ineffective to have a Package Combination.

- 14 Enter the correct information and click **Next**. The Download of **Missing PMC Solutions** dialog box will be shown.

**Note:** During the installation, the Installation Wizard checks if all necessary solutions are available; if not, the Installation Wizard tries to download the solutions with the connection information provided here. Missing solutions that cannot be found, or other errors, will be logged in **\$BSE/log.pmc**

Always select the setup automatic download for missing solutions. Specify the appropriate connection information, and click **Next**.

- 15 The **Configuration Files** dialog box appears. You can choose to change the configuration files.
- 16 For more information, click **Help**. Otherwise, click **Next**.
- 17 If you selected the Solution License Manager Installable Unit, the wizard asks you to supply information about some dialog boxes.
- 18 If you selected the ES Application Service Installable Unit, the wizard asks you to supply information about some dialog boxes.
- 19 Click **Next**. The **Ready to Install** dialog box appears.
- 20 To start the update, click **Install**.

For information about updating an environment with PMC solutions, refer to *Infor ERP LN 6.1 Administrator's Guide* (U8854 US). In the "ERP LN Software maintenance" chapter a section explains the PMC recipient procedure.

---



---

## Chapter 4 Post-Installation Steps

# 4

After you install the Enterprise Server 8.5, you must perform several post-installation steps.

### Solution number 233336

It is recommended to install solution **233336** after you have completely finished the update. This solution contains all known PMC solutions for Enterprise Server 8.5 up to a certain week.

### SP0/SP1 Solution number 206321

If you made one of the following upgrades without upgrading the application, install solution 206321 “Security files required when running ERP LN 6.1 SP0/SP1 with Enterprise Server 8.5”:

- Baan ERP 5.2a to Enterprise Server 8.5.
- ERP LN 6.1 SP0 to Enterprise Server 8.5.
- ERP LN 6.1 SP1 to Enterprise Server 8.5.

### Upgrade companies to the new Feature Pack level

The following steps are required only if ERP LN 6.1 is updated together with Enterprise Server 8.5; the steps are required for all companies other than the Infor demo companies 050, 070, 090 and 091. If ERP LN 6.1 is updated, you must reinstall these demo companies.

---

If you choose to create a new Update VRC for the Feature Pack, you must convert your companies from the original package combination to the FP\*-based package combination.

The following sessions are required. For details on these sessions, refer to *Infor Enterprise Server Administrator's Guide* (U8854 US), or the online Help of the sessions.

Log on with a super user, such as **baan** or **bsp**. Ensure this user is linked to the package combination of the companies to upgrade.

**Note:** This requirement is only valid for SP1. Unless used otherwise in your situation, run the Generate Order Planning (cprp1210m000) session for each company, for all scenarios, and with a full range.

If the SP/FP is installed in a new update VRC, complete the following steps:

- 1 Change Package Combination by Company (ttaad1101m000).
- 2 Fill in the fields and select the **Execute Upgrade Engine** check box. Depending on the size of your companies, this can take some time.

During this step, you might encounter the following message: "Table does not exist errors (506)." Ignore this message.

- 3 Change Package Combination for Users (ttaad2200m000).
- 4 Convert Changes to Runtime (ttams2200m000).
- 5 Re-login in the environment.

If you connect to a company not yet migrated to the new SP/FP level, you might receive the following message: "This company (xxx) must not be used because the company needs a data upgrade."

In general, note the following:

- 6 If you use table sharing, check your table sharing data; if required, adjust this data. The names of the new tables are in the appendix of this document.
  - 7 Create tables (ttaad4230m000) by company. You can expect the creation of at least 59 new tables by company.
  - 8 Run the Initialize Parameters (tcmcs0295m000) session per company. The company must be linked to the new Feature Pack package combination.
-

## Convert companies to the new Feature Pack level

The following steps are only required if ERP LN 6.1 is updated next to Enterprise Server 8.4.2.

The steps are not required for the demo companies 050, 070, 090 and 091. If ERP LN 6.1 is updated, you must reinstall these demo companies.

The following steps are only required if ERP LN 6.1 is updated next to Enterprise Server 8.4.2.

In the Companies (ttaad1100m000) session, you will see that companies connected to the new Service Pack / Feature Pack Package combination have the status Upgrade Needed.

Before you use the new Feature Pack, you must complete several mandatory steps; you must perform these steps in each Feature Pack upgrade.

Complete the following steps:

- 1 Run the Data Upgrade Engine (ttspt1200m000) session.

**Note 1:** For multicompany scenarios with logical table links, run the Data Upgrade Engine session for the range of linked companies, not individually.

**Note 2:** A test/simulation mode is available that runs the upgrade without actualizing the transactions. In test/simulation mode, a simulation size can be entered, which represents the maximum number of records that will be processed by each upgrade program. A simulation size value of **0**, which is the default value, is considered infinite; therefore, all records will be processed.

You can run a simulation to do the following:

- To get an indication of the total processing time. To do this, select a simulation size of **0**. The Data Upgrade Engine will perform a simulation of the full contents of the tables to be upgraded. This gives you an indication of the total time required to upgrade your companies.
  - To perform a quick sanity check. To do this, select a simulation size such as **10**. The Data Upgrade Engine simulates the upgrade of the first 10 records of every table to be upgraded, and quickly reports the missing tables, corrupt tables, and data consistency problems in the first 10 records.
  - Perform an extended sanity check. For this, select a simulation size of **0**. The Data Upgrade Engine performs a simulation of the full contents of the tables to be upgraded. This report includes missing tables, corrupt
-

tables, and potential data consistency problems in any record of the table.

In theory, data consistency problems cannot exist; however, if they do occur, they are reported in one of the following ways:

- A crashing Data Upgrade Engine:  
The corresponding database error, such as error 506, 512, and so on, appears in the user interface.
  - The data upgrade algorithms can create error reports. The error reports will be written to the folder entered in the **Path logfile(s)** field in the Data Upgrade Engine (ttspt1200m000) session. For every company, a separate subfolder is created in the entered path.
- 2 To initialize parameters, use the following sessions. Only changes will be activated. Other data will not be overwritten:
- Initialize Mapping Scheme Data (tcfm0210m000). Unless you are sure about the unused parts, by default, run this session with all options selected.
  - Initialize ACP Parameters (tfacp0500m000).
  - Initialize FAM Parameters (tffam0500m000):  
Unless you are sure about the unused parts, by default, run this session with all options selected.
  - Initialize Central Invoicing Parameters (cisli1500m000).
- Note:** The Manual Sales ledger account from Service Pack 1 onwards must be a FAM disposal account.
- 3 From tfgld4573m000, copy the mapping scheme to new mapping scheme version.
- a Start the Mapping Scheme (tfgld4573m000) session.
  - b On the Specific menu, click Find Active Mapping scheme.
  - c On the Specific menu, click Copy to New Mapping Scheme Version, and confirm Copy.
  - d Ensure the copied Mapping Scheme is visible in the session. On the **Specific menu**, click **Check Mapping Scheme**.
  - e Check the errors and warnings tab, and resolve any errors.
  - f On the Specific menu, click Activate Mapping Scheme.
- 4 Set the value for **Correct Outbound Quantity for SFC up to and Including** and **Correct Outbound Date for SFC up to and Including**.  
Run the Inventory Handling Parameters “(whinh0100m000) session, and select the actual set.
-

At startup of the sub-session, you receive an ask-enum error on whinh.uoln. Ensure you set a value for **Correct Outbound Quantity for SFC up to and Including** and **Correct Outbound Date for SFC up to and Including**.

- 5 In FP2, the business partner tax country has been added to the order lines. Only approved tax codes must be used; therefore, Infor Global advises you to check the following sessions that contain the data used for tax defaulting:
  - General Company Data (tccom0502m000):  
Fill in the tax ID of your own company.
  - Tax Parameters (tctax0100m000):  
Check the search order of tax libraries.
  - Tax codes by Country (tcmcs0536m000):  
Check whether the tax codes are approved.
  - Tax Handling (tctax0138m000):  
Check whether enough default Tax Codes are present; you might not be able to enter order lines any other way.
  - Tax Numbers by Business Partner (tctax4100m000):  
Check whether a tax number is present for the business partners in another EU country. Note that the country used in this session is used for the defaulting of the business partner tax country of order lines.

To resolve issues with the new tax model, use the following sessions:

- Tax Exceptions by Country (tctax1100m000), and Tax Exceptions by Country Set (tctax1101m000):  
To create exceptions in the tax defaulting scenarios, use these sessions.
- Test Tax Model (tctax8100m000):  
To simulate the tax scenarios used for tax defaulting, use this session.
- Unless used in your situation, for updates from SP0 to SP1, run the Generate Order planning (cprp1210m000) session with a full range for all scenarios.

## To configure shared memory after the Enterprise Server update

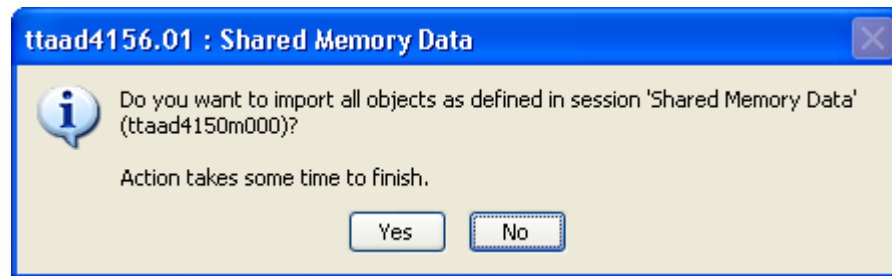
Because DLLs are used more frequently, it is difficult to decide which objects must be loaded in shared memory. Measurement tools are now available to identify which objects are frequently used and suitable to load in shared memory. A configured shared memory based on the measurement information will also improve processing speed.

Specific information about how to configure shared memory is specified in the administration guide. The following section is a short enumeration of the measurement tools configuration. The process consists of two main steps:

- 1 Specify the objects that must be stored in shared memory
- 2 Configure the Shared Memory service.

To define shared memory content, the following sessions can be used:

- 3 **Shared Memory Data** (ttaad4156m000) to specify objects in shared memory. When you already have objects specified in shared memory, the following message will appear:



To use your existing specifications, click **Yes**. If this message does not appear, you can import a range of program and/or report objects from the Data Dictionary (DD) into shared memory. The import session is present in the **Specific** menu of the Shared memory Data (ttaad4156m000) session.

For more detailed information, refer to the administration guide.

- 4 **Logging Parameters** (ttaad4153m000), for gathering statistics on shared memory. In this session, the timeframe (start and end time) in which the logging must take place can be defined. If no timeframe is defined, no logging will be done.

To store the data in **\$BSE/lib/defaults** folder file **logging**, click **Convert**.

A convert can only be started on a host defined as Master Application Server (MAS). In case the host is not an MAS, all selection fields and the **Convert** option will be disabled.

To completely remove the currently stored shared memory measurement data, use **Cleanup**.

The measurement will start for all bshells started after the convert is run, and take the defined timeframe into account.

- 5 **Restart shared memory:**

The procedure to complete the configuration of shared memory on a Windows or UNIX system differs:

---

**Procedure on Windows:**

Start the Enterprise Server Service Manager. Right-click **Shared memory service**, and on the shortcut menu that appears, click **Stop**. Next, right-click again and click **Start**.

**Procedure on UNIX:**

Exit the Infor ERP session and log on to the Infor ERP server as user **root**. To reload shared memory, enter the following commands:

```
# cd $BSE/bin  
# ./srdd_init6.2 -i
```

After the period of shared memory measurement has ended, the log information can be found in the Shared Memory Measurement (ttaad4152m000) session. On behalf of this information, you can repeat specifying objects stored in shared memory.

## Table sharing data

Table Sets and table references are delivered with every Feature Pack of Infor ERP LN to set up or update table sharing. For technical and functional information about table sharing, refer to the *User's Guide for Multicompany Table Sharing* (U8955 US).





---

## Chapter 5 Feature Packs and Online Help Installation

# 5

This chapter describes how to perform an online Help installation in combination with a Feature Pack installation.

The files for ERP LN online Help are included on the Infor ERP LN 6.1 medium.

The files for the Infor Enterprise Server online Help are on the Infor ERP Enterprise Server medium.

All help installation files can be found on the media, in the subdirectory “Online Help”.

Before you start the ERP online Help file installation, you must have installed and configured Webtop. For specific information about online Help and installation of the files from the SP1 medium, refer to *Webtop Installation and Configuration Guide* (U8715 US).

### Online help FP5

The ERP LN FP5 medium contains a zip file with the following online help:

- **erpln\_B61Ua5stnd\_en\_xmlhelp.zip**. Standard + FP5 help info. This is mandatory to install.

For specific information, refer to *Installation and Configuration Guide for Infor Web Help* (U8934 US). In “How to deploy Infor Web Help”, a section explains how to install the zip.file.

---



---

## Chapter 6

### To Update a Porting Set

# 6

For the latest information about a porting set update, refer to the Infor Global product support Web site <http://www.infor365.com>

#### Infor ERP LN on a Microsoft Windows Server Cluster

Before the porting set is updated, the Baan Environment resource must be removed; to remove the resource, use the Cluster Administrator. After the porting set upgrade, the Baan Environment resource must be added again. For more information about Server Cluster, refer to the pre-installation guide for Windows (U8072 US).

---



---

## Chapter 7

# Update a Language in ERP LN

# 7

### The language packs

The language packs are delivered in the form of PMC solutions, and can be installed as installable units by the Staging Wizard and Installation Wizard.

### English as fall back language

When starting the Infor ERP LN 6.1 product in a language other than English, and certain ERP packages, messages, labels, or help text are not available in that language code, the English version of that package, message, label, or help text will be shown.

### ODM initial setup

For ODM, the language version of the initial setup tables are available as winzip files, known as ODM tables, on the Infor ERP Language medium. These files must be unzipped and loaded into the Import System Data (dmsys2210m000) session.

The dumps will be installed on the ERP server, in the \$BSE/odm folder; however, they can be imported from any folder for which the administrator has read, write, and execute privileges. The table dumps are identified by the company number. The file names are also listed in a file name list that also has the company number in the closing line. The files must be imported in an empty company number. The import process is described in *Infor ERP LN 6.1 – ODM Set-up Data Guide* (U8436 US).

---

## The installation process

You can update the Infor ERP LN 6.1 environment with new software components. In case of a language update, ensure the ERP environment is up and running.

For the latest information about a language update, refer to the Infor Global product support Web site at <http://www.infor365.com>

Note the following:

- The environment must contain the correct package combination and package VRCs, using the official naming conventions.
- The environment must contain the target language code.

To install a language pack, complete the following steps:

- 1 Insert the medium with the language pack, and start the Staging Wizard.
- 2 The Welcome dialog box appears. Click **Next**.
- 3 Fill out the temporary directory, in this case c:\temp. Click **Next**.
- 4 Select the installable units. Click **Next**.
- 5 Choose to start the installation Wizard directly after the staging wizard finishes. Click **Next**.
- 6 Check the information in this dialog box. To make adjustments to the information, click **Back**. Otherwise, click **Next**.
- 7 A warning can appear about the Java virtual machine. To continue, click **No**.
- 8 To check the summary information, click **Next**.
- 9 To make adjustments in this dialog box, click **Back**. Otherwise, to continue, click **Next**.

The process of the Staging Wizard is now finished. The Installation Wizard will be started.

- 10 The Welcome screen of the Installation Wizard appears. Click **Next**.

The **Environment** dialog box will appear.

- 11 Fill in the environment you want to update with your language. Click **Next**.
  - 12 Select the installable units for your language to install. Click **Next**.
  - 13 In case of an installation on UNIX, click **Remote**. In case of a Windows installation, click **Local**. Click **Next**. This example installation is a UNIX installation; therefore, **Remote** is selected.
-

The **Host Name** and **Login Name** are probably already filled with the user who performed the initial installation.

- 14 Fill in the password. Click **Next**.
- 15 The **Destination Directory** dialog shows the BSE directory. To continue with the **Configuration Files** dialog, click **Next**.
- 16 Select the configuration files you want to change. To continue, click **Next**. If you select the **bse\_vars** file, the bse\_vars file dialog box appears.

**Warning:** This dialog box can be filled with specific settings for the Infor ERP environment; for example, in case more versions of DB2 are installed on the same system, you must set a shared library path environment variable. This environment variable lets you use the correct libraries with the DB2 version you want to use for the Infor ERP installation. The environment variable must, if not already, be placed in the bse\_vars file. For more information, refer to the pre-installation guide for Unix (U8073 US).

- 17 Click **Next**. If you also selected the storage\_param file, the **Configuration File: storage\_param** dialog box appears.

The dialog lets you fill the storage\_param with specific settings for the database. To display the default entries of the storage\_param file, click **Defaults**. Select an entry you want to edit. For specific information about the storage\_param file entries, refer to the technical reference manual applicable to your database.

- 18 To check the summary information, click **Next**. If you agree, click **Install**. Otherwise, to make the necessary adjustments, click **Back**.
- 19 To start the installation, click **Install**. Several information dialog boxes inform you of the installation process. To stop the installation during this process, click **Stop**.
- 20 To complete the update process, click **Finish**.

In case of a Multibyte installation, complete the following:

- 21 Open the (ttaad1510m000) session. Double-click the MB language record to be installed.
  - 22 The (ttaad1110s000) session will open. Ensure the entry of the **Character set** field corresponds with the installed language pack, such as **GB2312**.
-





---

## Chapter 8 To Migrate Data Languages

# 8

In Infor Enterprise Server 8.4.1 and higher, the coding of data languages is based on the ISO 639-1/ISO 3166-1 standard. In earlier versions, the coding was based on the ISO 639-2 standard. For details, refer to “Multilanguage Application Data” described in the administrator’s guide.

Infor Enterprise Server 8.4.2 still works with the old ISO 639-2 data languages. However, to use the new data language coding standards, a migration of the existing data languages might be required.

To find out whether a migration is required, start the Data Languages (ttaad1111m000) session and view the data language properties.

A migration is required if ISO 639-2 data languages with status "Available" or "Base Language" are present. Migrate these languages according to the procedure described in the following section.

**Note:**

If no ISO 639-2 data languages with status "Available" or "Base Language" are present, a migration is not required. However, you must remove all data languages with status "Pending for Addition" and/or "Pending for Deletion"; otherwise, you cannot convert new data languages to runtime.

### To migrate data languages

To migrate data languages to the new coding standard, complete the following steps:

**To define new ISO 639-1/ISO 3166 data languages**

- 1 Start the ISO 639 Languages (ttaad1512m000) session. Check whether the ISO 639-1-based languages codes are present; if not, on the specific menu, click to import the missing languages.
- 2 Start the ISO 3166-1 Countries (ttaad1513m000) session and check whether the ISO 3166-based country codes are present; if not, on the specific menu, click to import the missing countries.
- 3 Start the Data Languages (ttaad1111m000) session. For each ISO 639-2 data language with status "Available" or "Base Language", define a new data language based on the new ISO 639-1/ISO 3166 standard. The new data languages have status "Pending for Addition".

**Define data language mapping**

To define a mapping between the old ISO 639-2-based language codes and the new ISO 639-1/ISO 3166-based language codes, complete the following steps:

- 1 Start the ISO Data Language Migration (ttaad1211m000) session.
- 2 Click **Mapping**. The ISO Data Language Mapping (migration) (ttaad1114m000) session starts. The session displays the old ISO 639-2 data languages with status "Available" or "Base Language" in the Data Language (from) field.
- 3 Define the mapping between the old and new data languages: for each old data language that is displayed, specify the corresponding new ISO 639-1/ISO 3166 data language in the Data Language (to) field. For an example, refer to the session Help.

**Note:** all old data languages with status "Available" or "Base Language" must be mapped.

- 4 To store the mapping and return to the ISO Data Language Migration (ttaad1211m000) session, click **Save** and **Close**.

**Migrate data languages**

To migrate the data languages, complete the following steps:

- 1 In the Basic name for dump file field in the ISO Data Language Migration (ttaad1211m000) session, enter the basic name, including the path, of the sequential dump files that the session will generate. For example:

/home/ISOdump

- The session generates a separate dump file for each package combination. The package combination code is automatically added as a prefix to the basic filename.
-

- The sequential dump files contain the records and data dictionary of all tables with enabled registered multilanguage fields.
- 2 In the Basic name for error file field, enter the basic name, including the path, of the error files that the session will generate. For example:

`/home/ISOerr`

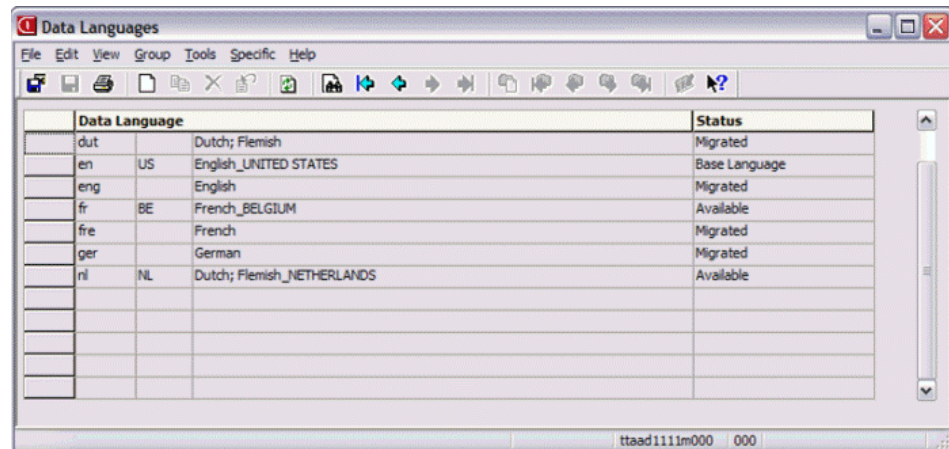
- The session generates a separate error file for each package combination. The package combination code is automatically added as a prefix to the basic error filename.
  - The error files contain error messages and statistics.
- 3 To start the migration process, click **Migrate**.

**Important:**

Do not interrupt this process. During the migration process, the following steps are automatically completed and indicated by a progress bar:

- The sequential dump(s), mentioned earlier, are generated.
  - From the sequential dumps the data is imported again, using the data language mapping scheme as defined in the “Define data language mapping” steps. This step links the existing translations to the new data language.
  - Based on the data language mapping scheme, users and software languages that are linked to old ISO 639-2 data languages are linked to the corresponding new data languages.
  - If the user who executes the migration is not linked to a data language, the migration process links this user to the base language. After the migration, you can manually change this.
  - If the process executed successfully, the following message is displayed:  
Migration data languages completed successfully.
  - If the process did not execute successfully, the following error message is displayed:  
Migration data languages NOT completed successfully. Check the logfile "log.mle\_conv" in the \$BSE/log folder for the possible cause, solve the issue(s) and restart the migration process.
  - The original ISO 639-2 data languages get the status "Migrated". The new ISO 639-1/ISO 3166-1 data languages get the status "Available", and the mapped base language gets the status "Base Language".
-

For example, after a successful migration, the following data languages are present.



In the example earlier, the `$BSE/lib/data_langs` file has the following content:

- en\_US:b
- fr\_BE:a
- nl\_NL:a

## Finalize migration

To finalize the migration, complete the following steps:

- 1 Log off and log on again.
- 2 Start the Convert Changes to Runtime DD (ttams2200m000)</GUIRef> session and convert all user data to runtime.

### Important!

- After a successful migration, do not remove the specified data language mapping; this mapping is used by the Audit Management facility.
- After a successful migration, you can add new data languages based on the new ISO 639-1/ISO 3166 standard.

---

## Appendix A New Tables

# A

After you install a Feature Pack, several new tables can be created;

In the following table are the new ERP LN FP5 application tables.

Package	Comp. Type	component	Description
ci	Table	sli247	Sales Order Invoice Component Lines
tc	Table	mcs800	External reference table Manufacturers
tc	Table	rgt000	Blnt Regression Test Parameters
tc	Table	rgt001	Blnt Regression Tests
tc	Table	rgt002	Execution of Test Job
tc	Table	rgt003	Test Run Results
tc	Table	rgt004	Test Run Error
tc	Table	rgt020	Low Cost XML winrunner tests
tc	Table	rgt021	XML test data
tc	Table	rgt022	XML test steps
tc	Table	rgt100	Blnt Regression Test Results
tc	Table	stl100	Message Log
td	Table	sls102	Sales Quotation Delivery Scheme
td	Table	sls417	Sales Order Inventory

---

Package	Comp. Type	component	Description
			Shortage Lines
td	Table	sls467	Sales Order Line Component Surplus
td	Table	sls801	Sales Orders Integrations
tf	Table	bia019	Journal Types
tf	Table	bia020	Mapping Transaction Type to Journal Type
tf	Table	cmg023	Payment/Receipt Elements
tf	Table	cmg024	Payment/Receipt XML Layout Header
tf	Table	cmg025	Payment/Receipt XML Layout Details
tf	Table	cmg026	Mapped Elements by Layout Line
tf	Table	fst180	Transactions
tf	Table	gld440	Conversion Parameters
tf	Table	gld441	Conversion Rules for Financial/Logistic Co
tf	Table	gld442	Conversion Rules for Transaction Types
tf	Table	gld443	Conversion Rules for Ledger Accounts
tf	Table	gld444	Conversion Rules for Dimensions
tf	Table	tax220	Tax Exemption Letter
tf	Table	tax221	Tax Exemption Letter by Supplier
tf	Table	tax225	Tax Exemption Limit
tf	Table	tax226	Tax Exemption Limit Invoice Breakdown
ti	Table	apl330	Product Variant Cost Price
ti	Table	asl000	Client Installation Parameters
tp	Table	ppc360	IFRS WIP Balance

Package	Comp. Type	component	Description
ts	Table	epp000	Quotation Parameters
ts	Table	epp100	Quotations
ts	Table	epp110	Quotation Lines
ts	Table	epp120	Quotation Cost Lines
ts	Table	epp810	History - Quotations
ts	Table	epp811	History - Quotation Lines
ts	Table	epp812	History - Quotation Cost Lines
ts	Table	wcs420	Work Order Labor Resources
ts	Table	wcs842	History Work Order Labor Resources





### Error messages to be ignored

#### No definition in definition file datrg100 and datrg125

After the update of a service pack 0 environment with Enterprise, the following error messages can be found in the logfiles in the log subdirectory of the environment, or the eventviewer:

- No definition in definition file for sopen(F\_BRDD:ddatrg100, ddatrg100).
- No definition in definition file for sopen(F\_BRDD:ddatrg125, ddatrg125).
- domain: danch.stor, range expression: \$\$ in "[a-zA-Z0-9\_-]\* \*\$", error 60.
- Regular expression error nr 60 (Range error in bracket (start>end)) in '[a-zA-Z0-9\_-]\* \*\$'

These messages will appear more than once, and can be ignored.

#### daxch021091 R0 0 Reconfiguration failed (error 506)

After the update of a feature pack 3 environment, the following error messages can be found in the logfiles in the log subdirectory of the environment, or the eventviewer:

- daxch021091 R0 0 Reconfiguration failed (error 506).

Instead of company 091, other company numbers can be found. Related to the above message, the following messages can be found:

---

- Errno 0 bdb\_errno 506 (Table does not exist).
- Log\_mesg: Reconfiguration failed (error 506).

These are not fatal messages, because the update process finishes correctly. Error 506 means that the table does not exist in the database. No reconfiguration is needed in such a case; you can ignore these messages.

### Unknown program domain ttdsk.title

Log\_mesg: Unknown program domain ttdsk.title used in object ottdsk2000m000. Program domain is not available in shared memory.

Object mentioned is no longer used; you can ignore these messages.

### Log messages you can ignore

During the installation, the following log messages might appear:

- No audited columns in table tdpur000050.
- Table tdsmi054000 does not exist.

These messages might occur for multiple tables. These messages are not fatal and you can ignore them.

### Error messages in log file with unexpected company number

In \$BSE/log log files (UNIX) or Event viewer (Windows), messages can appear for tables that do not exist. These messages appear because application tables are being searched in company 000, such as “Table tdsmi050000 does not exist”, or if Tools tables (tt, tl) are being searched in an application company, such as tlbt700050: Table does not exist (error 506).

You can ignore these messages.

---

