



▶▶ SSA® ERP LN 6.1

## Specific Installation Guide

© Copyright 2005 by Baan International B.V., a subsidiary of SSA Global Technologies, Inc.

All rights reserved. No part of this publication may be reproduced, stored in a retrieval system, or transmitted in any way or by any means, including, without limitation, photocopying or recording, without the prior written consent of Baan<sup>TM</sup> International B.V.

## Important Notices

The material contained in this publication (including any supplementary information) constitutes and contains confidential and proprietary information of Baan International B.V.

By gaining access to the attached, you acknowledge and agree that the material (including any modification, translation or adaptation of the material) and all copyright, trade secrets and all other right, title and interest therein, are the sole property of Baan International and that you shall not gain right, title or interest in the material (including any modification, translation or adaptation of the material) by virtue of your review thereof other than the non-exclusive right to use the material solely in connection with and the furtherance of your license and use of software made available to your company from Baan International pursuant to a separate agreement ("Purpose").

In addition, by accessing the enclosed material, you acknowledge and agree that you are required to maintain such material in strict confidence and that your use of such material is limited to the Purpose described above.

Although Baan International has taken due care to ensure that the material included in this publication is accurate and complete, Baan International cannot warrant that the information contained in this publication is complete, does not contain typographical or other errors, or will meet your specific requirements. As such, Baan International does not assume and hereby disclaims all liability, consequential or otherwise, for any loss or damage to any person or entity which is caused by or relates to errors or omissions in this publication (including any supplementary information), whether such errors or omissions result from negligence, accident or any other cause.

Baan International B.V., is a wholly owned subsidiary of SSA® Global Technologies<sup>TM</sup>, Inc.

## Trademark Acknowledgments

SSA Global, SSA and the SSA Global logo are trademarks of SSA Global Technologies, Inc. in the United States and/or other countries. Baan is a trademark of Baan International B.V., in the United States and/or other countries.

All other company, product, trade or service names referenced may be registered trademarks or trademarks of their respective owners.

## Publication Information

**Document code** : U8744A US  
**Release** : SSA® ERP LN 6.1  
**Document title** : Specific Installation Guide  
**Publication date** : April 05

# Table of Contents

<b>Chapter 1</b>	<b>Service Packs and new installations .....</b>	<b>1-1</b>
<b>Chapter 2</b>	<b>Upgrade SSA ER LN 6.1 to SP1 .....</b>	<b>2-1</b>
	Upgrade scenarios .....	2-1
	Upgrade the Update VRC with companies .....	2-1
	Upgrade Update VRC and companies .....	2-1
	Prerequisite for SP1 upgrade .....	2-2
	Prerequisite for company upgrade .....	2-3
	SSA Enterprise Server 7.6 SP1 installable units .....	2-3
	SSA Staging Wizard 1.8 .....	2-3
	SSA Installation Wizard 10.2.0 .....	2-3
	SSA License Manager 2.2.0.5 .....	2-3
	SSA Enterprise Server Porting Sets 7.6a.01 .....	2-3
	SSA Enterprise Server 7.6 (Build 2.5) .....	2-4
	SSA Enterprise Server 7.6 PMC Solutions .....	2-4
	SSA ES Application Service Manager 1.2 .....	2-4
	SSA ERP LN 6.1 SP1 installable units .....	2-4
	SSA Staging Wizard 1.8 (Build PA.2583) .....	2-4
	SSA Installation Wizard 10.2.0 (Build 0) .....	2-4
	SSA ERP LN 6.1 (Build 22) .....	2-4
	SSA ERP LN 6.1 PMC Solutions .....	2-5
	SSA Decision Manager 2.3.1 (Build 1.0) .....	2-5

SSA Baan Dynamic Enterprise Models.....	2-5
SSA Baan ERP master, sample, and demo data.....	2-5
Installation procedure.....	2-6
To update the staging area .....	2-6
To install SP1 on the SSA ERP LN 6.1 environment .....	2-7
Post-installation steps .....	2-11
Upgrade companies to SP1 software level .....	2-11
Convert companies to SP1 level .....	2-11
Installation instructions for ERP LN SP1 and Intrastat .....	2-13
<b>Chapter 3      Service Packs and Online Help installation .....</b>	<b>3-1</b>

# About this Guide

This document is an Installation Guide that describes Service Pack-specific issues such as the following:

- Service Packs and new installations
- Service Pack upgrades from SPx to SPy
- Service Pack and Language Pack installations
- Service Packs and online Help installation

This document is intended for SSA ERP LN Installers, database administrators, and application and system administrators.

No detailed knowledge is required to use this document. However, understanding the contents is easier if you are familiar with how ERP LN is structured with the following:

- Package VRCs
- Package combinations
- Derived-from structure

## **Send us your comments**

We continually review and improve our documentation. Any remarks/requests for information concerning this document or topic are appreciated. Please e-mail your comments to [documentation@ssaglobal.com](mailto:documentation@ssaglobal.com).

In your e-mail, refer to the document number and title. More specific information will enable us to process feedback efficiently.



---

# Chapter 1

## Service Packs and new installations

# 1

This chapter describes how to handle Service Packs if you want to install a new version of ERP LN.

For information about new installations, refer to the following documents:

- *Preinstallation Guide for UNIX* (U8073 US)  
Describes how to install on a system with a UNIX operating system
- *Preinstallation Guide for Microsoft Windows* (U8072 US)  
Describes how to install on a system with a Windows operating system
- *Overall Installation Guide for SSA® ERP LN Products* (U8204 US)  
Provides specific information about a new installation
- *Technical Notes for SSA® ERP LN Tools* (U8333 US)

Note that you always create a new staging area from which to install. Reuse of an existing area can cause problems.

To install the Service Pack together with the ERP LN software in one run, you must choose the following installable units:

- PMC ERP applications
- PMC ERP Tools
- SSA Installation Wizard
- SSA License Manager
- SSA ES Porting set

- SSA ERP LN standard master data
- SSA ERP LN 6.1
- SSA Enterprise Server
- SSA Staging Wizard

Optional are:

- SSA Decision Manager
- SSA Application Services Manager
- SSA ERP LN Enterprise Business Model
- SSA ERP LN Master Data Implementation model
- SSA ERP LN Demo Model
- SSA ERP LN sample data
- SSA ERP LN demo data

The *Overall Install Guide* provides an example installation of a new SSA ERP LN 6.1 installation.



---

## Chapter 2

### Upgrade SSA ER LN 6.1 to SP1

# 2

## Upgrade scenarios

### Upgrade the Update VRC with companies

In this situation, the SP1 update is installed in the Update VRC that has companies attached by means of a package combination.

This chapter describes the following:

- Prerequisite for SP1 upgrade
- Prerequisite for company upgrade
- Installation procedure
- Postinstallation steps

**Note:** During the scenario upgrade, you can skip the “Upgrade companies to SP1 level” section.

### Upgrade Update VRC and companies

In this process, you must first upgrade the selected Update VRC to SP1 level. Subsequently, you must upgrade the companies to the package combination of that Upgrade VRC.

This process requires an additional Update VRC in the ERP LN environment. If not already available, you have to manually create this Update VRC before starting the installation. Refer to the *SSA® ERP LN 6.1 Product Maintenance and Control (PMC) Recipient Guide* (U8616A US) chapter “Generation and Usage of Update VRC’s” for details.

## Prerequisite for SP1 upgrade

Check *SSA® Enterprise Server 7 SP1 - Technical Notes* (U8683A US) for details on supported platforms and specific installation related issues.

Check solution 201154 on [www.support.baan.com](http://www.support.baan.com) for the latest information on this Service Pack.

Before you install SSA ERP LN 6.1 Service Pack 1 (SP1), you must install the solution 147020.

**Note:** If you perform this installation on a Microsoft Windows platform, be sure to clean up shared memory, as described in the *SSA® Enterprise Server 7 SP1 Technical Notes* (U8683A US).

Solution 147020, Bundle Enabling, and other solutions are available by means of OnePoint Support [www.support.baan.com](http://www.support.baan.com).

**Note:** In some cases, you must install earlier PMC solutions, as well.

After you install solution 147020, run the following sessions:

- Create Runtime Tools (ttadv5213m000), including dump data definitions
- Compile Labels (ttadv1243m000)

Identify which installable units must be installed. The following sections describe the installable units provided.

## Prerequisite for company upgrade

Before you can upgrade the package combination to which your companies belong to SP1 level, be sure to run the Generate Order Planning (cprp1210m000) session for all scenarios and with full range unless used otherwise in your situation.

## SSA Enterprise Server 7.6 SP1 installable units

### SSA Staging Wizard 1.8

The Wizard that you can use to build a so-called staging area, a storage place for the various installable units before the actual installation is performed.

You must install this unit during an upgrade to SP1.

### SSA Installation Wizard 10.2.0

The SSA Installation Wizard 10.2.0 is the wizard that you can use to perform the installation or update of the ERP environment based on the installable units available in the staging area.

You must install this unit during an upgrade to SP1

### SSA License Manager 2.2.0.5

This installable unit installs and updates both the SLM client and SLM server on the system specified for installation.

The client of this SLM version must be installed on the SSA ERP LN 6.1 server.

### SSA Enterprise Server Porting Sets 7.6a.01

The SSA Enterprise Server virtual machine is the basis on which the ERP LN application runs. For each supported operating system platform, a porting set is provided. Select the porting set relevant to your system.

You must install the appropriate unit during an upgrade to SP1.

### SSA Enterprise Server 7.6 (Build 2.5)

SSA Enterprise Server 7.6 (Build 2.5) is the basis set of Enterprise Server. Do not select this installable unit during an upgrade to SP1.

### SSA Enterprise Server 7.6 PMC Solutions

SSA Enterprise Server 7.6 PMC Solutions are the set of solutions required to upgrade Enterprise Server to SP1 level.

### SSA ES Application Service Manager 1.2

You mainly use SSA ES Application Service Manager 1.2 in combination with SSA Technical Architecture to manage the number of Adapters for ERP servers related to the load.

Installation of this installable unit is optional.

## SSA ERP LN 6.1 SP1 installable units

### SSA Staging Wizard 1.8 (Build PA.2583)

The Staging Wizard is a required unit. However, the wizard might already have been selected during the installation of SSA Enterprise Server 7.6 SP1.

### SSA Installation Wizard 10.2.0 (Build 0)

The Installation Wizard is a required unit. However, the wizard might already have been selected during the SSA Enterprise Server 7.6 SP1 installation.

### SSA ERP LN 6.1 (Build 22)

SSA ERP LN 6.1 (Build 22) is the basis set of ERP LN 6.1. Do not select this installable unit during an upgrade to SP1.

## SSA ERP LN 6.1 PMC Solutions

The set of solutions required to upgrade ERP LN 6.1 to SP1 level.

### SSA Decision Manager 2.3.1 (Build 1.0)

Do not install Decision Manager during an upgrade to ERP LN SP1. The Decision Manager requires a separate installation.

If Decision Manager 2.3 will work with SSA ERP LN 6.1, be sure to install solution 135632, as well.

## SSA Baan Dynamic Enterprise Models

### SSA ERP LN Enterprise Business Model, Version 3.6 (Build 23)

contains functions and processes based on the relevant distribution and production typologies that are supported in the ERP LN functionality. Selecting the ones relevant for your business the use of the ERP LN functionality can be simplified. Note: the Enterprise Business Model needs to be purchased. With the license code to be provided you can start to make use of the model.

### SSA ERP LN 6.1 Demo Model (Build 22)

SSA ERP LN Enterprise Business Model 3.6 (Build 23) and SSA ERP LN 6.1 Demo Model (Build 22) provide demo models for Demo Company 090.

## SSA Baan ERP master, sample, and demo data

### SSA ERP LN Standard Master Data (Build 23)

- Company 000: Currencies and domain segmentation
- Company 050: Basic generic master data, which you can use as a basis to set up production companies

**Note:** SSA recommends that you install this standard master data company, because an upgrade of the existing sample companies is not permitted and the SP1-related master-data company includes some new master data.

**SSA ERP LN 6.1 sample data (Build 23)**

Company 070: Example master data, such as sales types, not intended as a basis for new companies

**SSA ERP LN 6.1 demo data (Build 23)**

This build provides a demo company 090 with limited transactional data to show functionality of ERP LN 6.1

## Installation procedure

### To update the staging area

- 1 Insert the Enterprise Server installation media SSA Enterprise Server SP1. The staging area starts
- 2 Click **Staging Wizard**. If your Web browser asks whether you want to start StagingWizard.bat, click **Yes**. The **Welcome** dialog box appears.
- 3 Click **Next**.
- 4 Specify the destination directory. This directory can be a new directory or the directory you used during previous ERP LN installations.
- 5 Click **Next**. A scan of the CD-ROM now starts. After the scan, a dialog box appears in which you select the appropriate installable units.

The following units are required:

- SSA Staging Wizard 1.8
- SSA Installation Wizard 10.2.0
- SSA Enterprise Server Porting Sets, select the appropriate platform
- SSA Enterprise Server 7.6 PMC Solutions
- SSA License Manager 2.2.0.5, if you have deployed the License manager on the same server as SSA ERP LN 6.1

The following unit is optional:

- SSA ES Application Service Manager 1.2

- 6 Choose **Do Not Start Installation Wizard** and click **Next**.

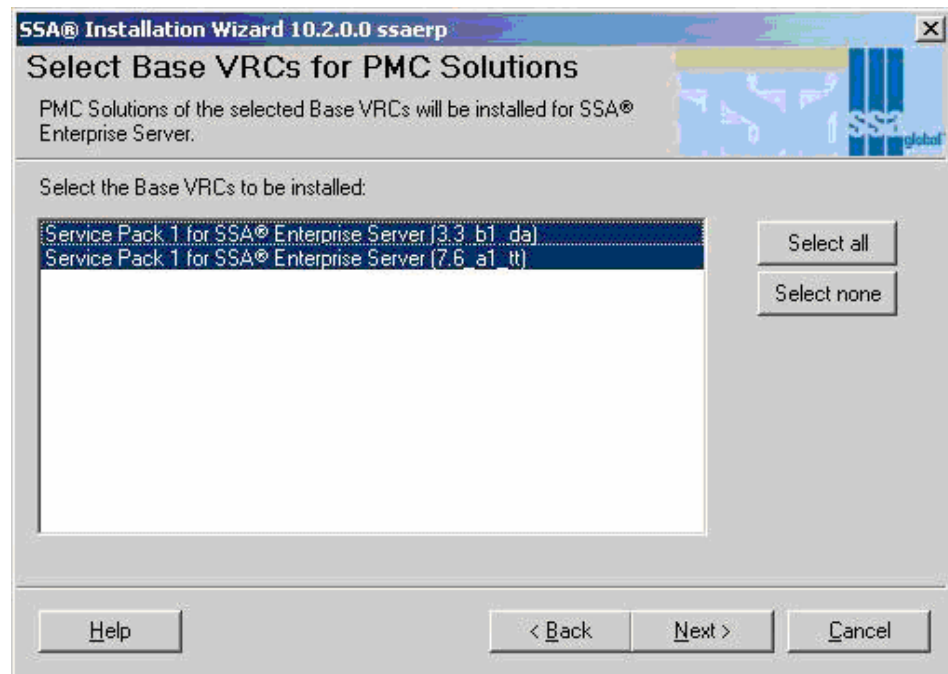
- 7 Click **Next** on summary and confirm overwrite
  - 8 Click **Finish**.
  - 9 Insert the SSA ERP LN 6.1 SP1 CD-ROM and click **Staging Wizard**. The **Welcome** dialog box appears
  - 10 Click **Next**.
  - 11 Supply the same destination directory you specified in Step 4 and click **Next**. The scan of the CD-ROM now starts.
  - 12 Select the appropriate installable units and click **Next**.  
For more information on these installable units consult the previous paragraph.  
The following units are minimal required:
    - SSA ERP LN 6.1 PMC Solutions
    - SSA ERP LN Standard Master Data (Build 23)
- The question “Do you want to start the Installation Wizard?” appears.
- 13 Click **Yes**.
  - 14 Click **Next**. The copy process of the software to the staging area now takes place.

### To install SP1 on the SSA ERP LN 6.1 environment

- 1 Stop the ERP environment, for instance by using \$BSE/etc/rc.stop (Unix) or SSA Manager (Windows).
- 2 Start the SSA Installation Wizard, by selecting <StagingArea>/Start/InstallationWizard.bat
- 3 Click **Next** in the **Welcome** dialog box.
- 4 In the **Environment** dialog box, select the environment you need to update and click **Next**.
- 5 Select the required installable units and click **Next**.
- 6 Select the appropriate porting set and click **Next**.
- 7 Select remote/local installation and click **Next**.
- 8 Provide the host name information and log-on information and click **Next**. The destination directory is provided as read only.
- 9 Click **Next**

A warning appears that informs you that all users must leave the SSA ERP environment before you continue this update.

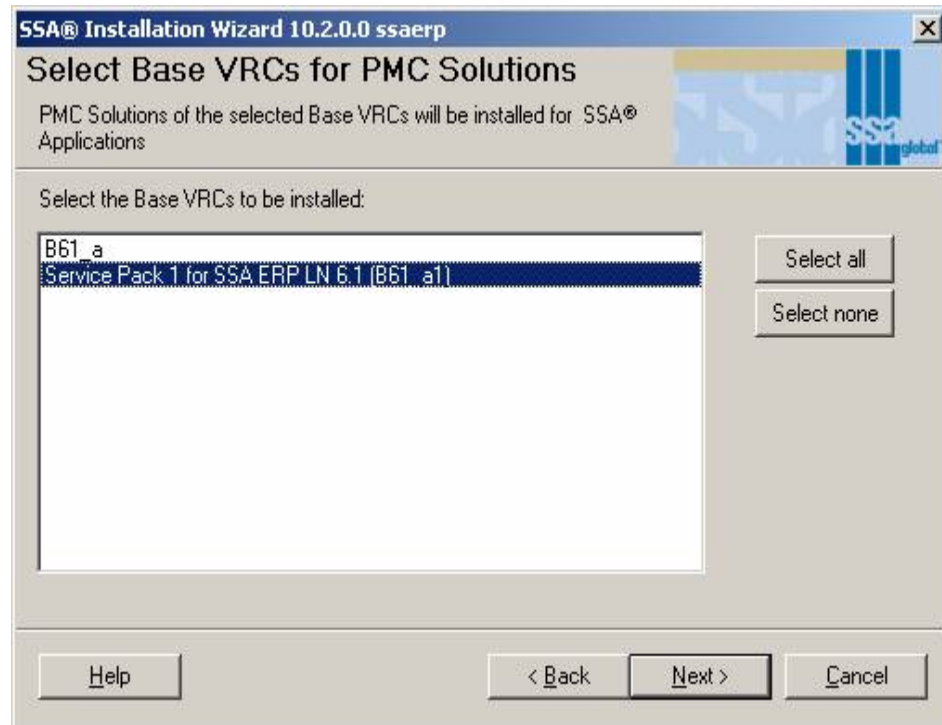
- 10 Click **OK**. The **Destination Directory** dialog box appears. During this step, ERP LN checks if the selected environment is available for update.
- 11 Click **Next**. The available platform type dialog appears.
- 12 Click **Next**. The **Select Base VRCs for PMC Solutions** dialog box appears.



- 13 Select the Service Pack for SSA Enterprise Server VRCs.

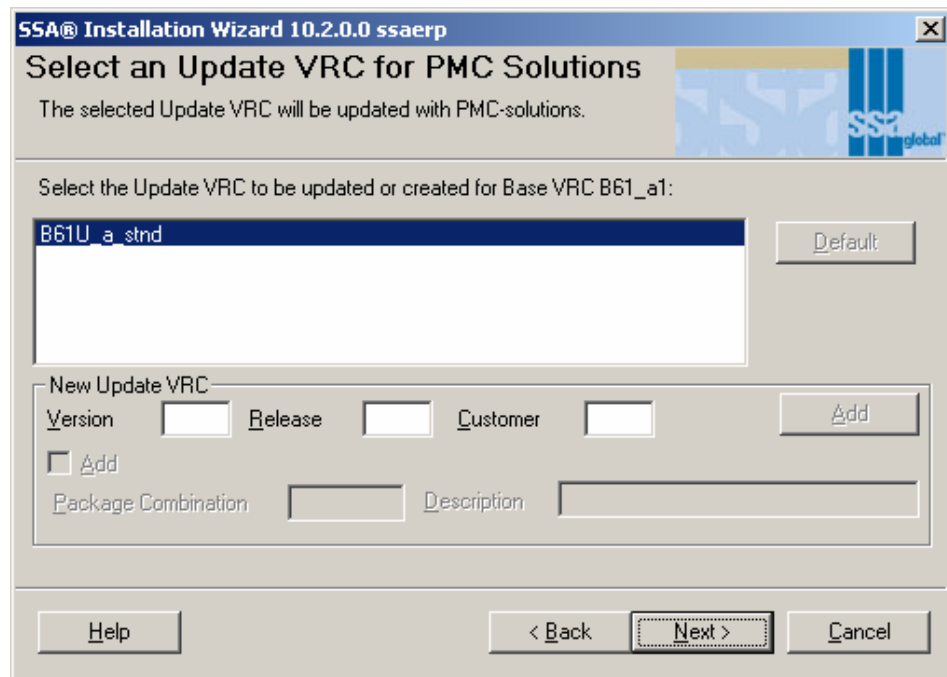


- 14 Click **Next**. The **Select Base VRCs for PMC Solutions** appears if you have more than one Base VRC to select from, but this time for SSA ERP applications:



- 15 Select the SSA applications and click **Next**. The **Select an Update VRC for PMC Solutions** dialog box appears.
- 16 Select the Base VRC for update and click **Next**.

**Note:** Creation of Update VRC's is not yet supported. Do not use the option "New Update VRC".



The Download of **Missing PMC Solutions** dialog box appears.

During the installation, ERP LN checks if the solutions available on the current Base VRC are also available on SP1 level. If these Base VRCs are not available, the installer tries to download the VRCs with the connection information provided here. Missing solutions that cannot be installed will be logged in:

```
$BSE/log.pmc.
```

- 17 Specify the appropriate connection information and click **Next**.
- 18 Error related to package\_comb, adjusted userdata or bsp setting to demo-company environment.  
Checks the demo company against package combination.

The **Configuration Files** dialog box appears.

- 19 Click **Next**. The **Ready to Install** dialog box appears.
- 20 Click **Install** to start the update.

If required, you can start the start/InstallationWizard.bat in the staging area to restart the Installation Wizard.

## Post-installation steps

### Upgrade companies to SP1 software level

The following steps are not required for the demo companies 050, 070 and 090.

If you choose to create a new Update VRC for the PMC solutions, you must convert your companies from the original package combination to the SP1-based package combination.

The following sessions are required. For details on these sessions, refer to the *SSA® Enterprise Server 7 Administrator's Guide* or the online Help of the sessions.

Login with your maintenance user e.g. baan or bsp, and make sure this user is linked to the package combination of the companies to upgrade.

- Run the Generate Order Planning (cprp1210m000) session per company, for all scenarios and with a full range, unless used otherwise in your situation.
- Change Package Combination by Company (ttaad1101m000)  
Dependent on the size of your companies this step may take a while. During this step you may notify "table does not exist errors (506)", these can be ignored.
- Change Package Combination for Users (ttaad2200m000)
- Convert Changes to Runtime (ttams2200m000)
- Re-login in the environment.  
If you connect to a company that is not yet migrated to SP1 level you can receive the following message: "This company (xxx) should not be used because it needs a data upgrade."
- Create tables (ttaad4230m000) per company  
You can expect creation of at least 59 new tables per company.

### Convert companies to SP1 level

In session Companies (ttaad1100m000) you will see that the companies connected to the SP1 Package Combination have the status "Upgrade needed".

Subsequently, you must carry out several mandatory steps before you can use the new Service Pack. You likely must perform these steps in each Service Pack upgrade, at least in the next SP0 → SP1 upgrade.

Run the following conversion programs:

- 1 Run Data Upgrade Engine (ttspt1200m000)

**Note:** A test-/simulation mode is available which will execute the upgrade without actualizing the transactions. In test-/simulation mode a simulation size can be entered, representing the (maximum) number of records, which will be processed by each upgrade program. A simulation size value of 0 (default value) is considered as infinite; so all records will be processed.

- 2 Run Initialize Mapping Scheme Data (tcfm0210m000)

By default run this session with all options marked unless you are sure about the parts not used.

- 3 Copy mapping scheme to new mapping scheme version from tfgld4573m000.

- Start the Mapping Scheme (tfgld4573m000) session
- Select the active mapping scheme by means of: **Specific → Find Active Mapping scheme**
- Copy to new mapping scheme by means of: **Specific → Copy to New Mapping Scheme Version**, confirm **Copy**
- Make sure the copied Mapping Scheme is visible in the session and check this scheme by means of: **Specific → Check Mapping Scheme**
- Check the errors and warnings tab and resolve any errors.
- Activate the new mapping scheme by means of: **Specific → Activate Mapping Scheme**

- 4 Set value for **Correct Outbound Qty for SFC up to and Including**.

Start Inventory Handling Parameters "(whinh0100m000) session and select the actual set.

At startup of the sub-session you will get an ask-enum error on whinh.uoln. Make sure to set a value for **Correct Outbound Qty for SFC up to and Including** via the radio-buttons.

- 5 Run the Generate Order planning (cprp1210m000) session for all scenarios and with a full range unless used otherwise in your situation.

## Installation instructions for ERP LN SP1 and Intrastat

This section is for all ERP LN companies that conduct business in the European Union and that are, therefore, subject to Intrastat regulations.

You must run the following sessions:

- Implemented Software Components (tccom0500m000)
- Intra EU Transaction Parameters (tccom7500m000)

### What has changed in SP1?

A new field (financial company) has been added to the Intra EU Transaction Parameters (tccom7500m000) session. The reason for this is because the fact that Intrastat reports are provided by country, which is reflected in ERP LN by at least one financial company.

### What user action is required after installation of SP1?

By default, the new **Financial Company** field has the value **000**. This section describes what you must do to continue to work with Intrastat. If you do not use the Intrastat functionality, you can skip this section.

To check whether Intrastat is used, check the Implemented Software Components (tccom0500m000) session. The **EU Statistical Reporting** check box must be cleared.

If this check box is selected, you must find out which of the following four company setups is applicable:

- Single logistic, single finance
- Single logistic, multi-finance
- Multi-logistic, single finance
- Multi-logistic, multi-finance

### Single logistic, single finance

If this situation is applicable, fill in the **Financial Company** field with the number of the financial company. You must also ensure that the **Intrastat** check box is selected in the Implemented Software Components (tccom0500m000) session for this financial company.

**Single logistic, multi-finance**

In this case, you must do the following. Currently, only one record will be available. Suppose N financial companies are used, of which m ( $n > m$ ) are financial companies that are located in the European Union. In this case, you must create M records manually in the Intra-EU Transaction Parameters (tccom7500m000) session. You must also ensure that the **Intrastat** check box is selected in the Implemented Software Components (tccom0500m000) session for each of these M financial companies. For all logistic companies, this parameter is not applicable.

**Multi-logistic, single finance**

Refer to “Single logistic, single finance.” The same logic applies here.

**Multi-logistic, multi-finance**

Refer to “Single logistic, multi finance.” The same logic applies here.

---

## Chapter 3

# Service Packs and Online Help installation

# 3

This chapter describes how to perform an online Help installation in combination with a Service Pack installation.

The files for ERP LN online help are included in SSA ERP LN 6.1 SP1.

The files for the SSA Enterprise Server online Help are on the SSA ERP Enterprise Server 7.6a SP1 CD-ROM (Disc 2)

Before you can start the SSA ERP online Help file installation, you must have installed and configured Webtop. Refer to the *Webtop Installation and Configuration Guide* (U8715 US) for specific information about online Help and the installation of the files from the SP1 CD-ROM.

