



▶▶ SSA® Baan IVc4

Installation Guide for Finance Brush Up on ags2 extension

© Copyright 2004 by Baan International B.V., a subsidiary of SSA Global Technologies, Inc.

All rights reserved. No part of this publication may be reproduced, stored in a retrieval system, or transmitted in any way or by any means, including, without limitation, photocopying or recording, without the prior written consent of Baan™ International B.V.

Important Notices

The material contained in this publication (including any supplementary information) constitutes and contains confidential and proprietary information of Baan International B.V.

By gaining access to the attached, you acknowledge and agree that the material (including any modification, translation or adaptation of the material) and all copyright, trade secrets and all other right, title and interest therein, are the sole property of Baan International and that you shall not gain right, title or interest in the material (including any modification, translation or adaptation of the material) by virtue of your review thereof other than the non-exclusive right to use the material solely in connection with and the furtherance of your license and use of software made available to your company from Baan International pursuant to a separate agreement ("Purpose").

In addition, by accessing the enclosed material, you acknowledge and agree that you are required to maintain such material in strict confidence and that your use of such material is limited to the Purpose described above.

Although Baan International has taken due care to ensure that the material included in this publication is accurate and complete, Baan International cannot warrant that the information contained in this publication is complete, does not contain typographical or other errors, or will meet your specific requirements. As such, Baan International does not assume and hereby disclaims all liability, consequential or otherwise, for any loss or damage to any person or entity which is caused by or relates to errors or omissions in this publication (including any supplementary information), whether such errors or omissions result from negligence, accident or any other cause.

Baan International B.V., is a wholly owned subsidiary of SSA® Global Technologies™, Inc.

Trademark Acknowledgments

SSA® Global, SSA and the SSA Global logo are trademarks of SSA Global Technologies, Inc. in the United States and/or other countries. Baan is a trademark of Baan International B.V., in the United States and/or other countries.

All other company, product, trade or service names referenced may be registered trademarks or trademarks of their respective owners.

Publication Information

Document code	: U8733A US
Release	: SSA® Baan IVc4
Document title	: Installation Guide for Finance Brush Up on ags2 extension
Publication date	: March 05

Table of Contents

Chapter 1	Introduction.....	1-1
Chapter 2	Installation.....	2-1
	Pre-installation requirements	2-1
	Installation Process.....	2-2

About this Guide

This document describes how to install the German Finance Brush Up extension on top of the SSA Baan IVc4 ags2 extension.

Chapter 1, "Introduction," introduces the Finance Brush Up Extension for SSA Baan IVc4.

Chapter 2, "Installation," describes how to install the Finance Brush Up.

Send us your comments

We continually review and improve our documentation. Any remarks/requests for information concerning this document or topic are appreciated. Please e-mail your comments to documentation@ssaglobal.com.

In your e-mail, refer to the document number and title. More specific information will enable us to process feedback efficiently.

The Finance Brush Up Extension for SSA Baan IVc4 can be used in combination with various Baan IVc4 platforms, such as Baan IVc4 standard, the Automotive Global Solution Extension Release 0 (ags0 extension) and the Automotive Global Solution Extension Release 2 (ags2 extension). This document can only be used to install the Finance Brush Up in combination with the SSA Baan IVc4 Automotive Global Solution Extension Release 2.

The Finance Brush Up Extension for SSA Baan IVc4 is only available in the German language.

The following chapter explains how to install the Finance Brush Up extension.

This chapter describes how to load and install the Finance Brush Up Extension for SSA Baan IVc4 software on to your UNIX or Windows system, for installation in combination with the SSA Baan IVc4 Automotive Global Solution Extension Release 2 (ags2 extension).

Pre-installation requirements

Before you install the software required for the Finance Brush Up extension, the following steps must be taken.

- 1 The Finance Brush Up version for SSA Baan IVc4 ags0 (all 3 parts together) must be ordered. You can find the order form on the SSA One Point Support (Baan) Web site under solution number 73050.
- 2 The complete Baan IVc4 standard software in all required languages must be installed.
- 3 The Baan IVc4 cnt0 and the Baan IVc4 ags2 extensions in all required languages (at least US English and German) must be installed.
- 4 The source code of the standard software and the cnt0 and ags2 extensions must be installed (only if source code is needed). The source code must be installed before the installation of the Finance Brush Up extension is started. If source code is needed on the system, install the source code for SSA Baan IVc4 and the cnt0 and ags2 extensions from the source CD-ROM.
- 5 The system must be upgraded to at least Service Pack 18 (SP18).

- 6 Portingset 6.1c.07.05 or a newer release of the portingset must be installed.

Installation Process

Before you install the Finance Brush Up software, first check if any last minute information is available about the Finance Brush Up for ags2 and the installation of this extension. You can find this information on the SSA One Point Support (Baan) Web site under solution number 200252.

Take the following steps to install the ams0 extension software:

- 1 Install the Finance Brush Up fba3 extension on top the ags2 extension

The Finance Brush Up version for SSA Baan IVc4 ags0 (fba3 extension) shall be installed with help of the installation guide that is delivered with this fba3 extension. However the following exception shall be noted:

The B40S_c4_fba3 VRC's shall be derived from the ags2 VRC's (in a standard ags2 installation this is B40U_c4_ags2) instead of the ags0 VRC's. Therefore, you have to change the derivation structure of the B40S_c4_fba3 VRC's (for packages tc, td, tf and ti) after the import of the software as described in step 2 of the installation guide for the fba3 extension. Select the package VRC tc B40S_c4_fba3 in the Maintain Package VRC's (ttadv1111m000) session. Change the **Derived from Version/Release/Customer** into B40U_c4_ags2 (or any other VRC that is used as Update VRC for the ags2 extension on your system). Repeat this step for the packages td, tf and ti.

- 2 Update the fba3 extension with PMC solutions

Create a PMC Update VRC on top of the VRC for the fba3 extension (that was created in step 1). Refer to the PMC guide how to create the Update VRC. Install all PMC solutions for the fba3 extension till at least December 2004. An overview of the FBU solutions (including the fba3 extension) can be found on the SSA One Point Support (Baan) Web site under solution number 73702.

3 Create the required VRC's

Use the Maintain Package VRC's (ttadv1111m000) session to create a new VRC B40U_c4_f3a2, derived from the Update VRC for the fba3 extension (in a standard installation this is B40U_c4_fba3) for the packages tc and tf. Refer to the screen dump, which shows the example for package tc.

ttadv1111m000 : Maintain Package VRC's [000]

File Edit Group Workflow Options Order Tools Special Help

Package tc Common BAAN IV

Version B40U

Release c4

Customer f3a2

Description Fin. Brush UP (ags2)

Status Released

Derived from

Version B40U

Release c4

Customer fba3

Integration with

Package VRCs in

Pack Combination

add alphanum / zoom

4 Create the directories for the software components

Use the Maintain Directories of Software Components (ttadv1115m000) session to enter the directories of software components for all Package VRC's that were created in the previous step. Refer to the screen dump, which shows the example for package tc.

ttadv1115m000 : Maintain Directories of Software Components [000]

File Edit Group Workflow Options Order Tools Special Help

Package tc Common BAAN IV

VRC B40U c4 f3a2 Fin. Brush UP (ags2)

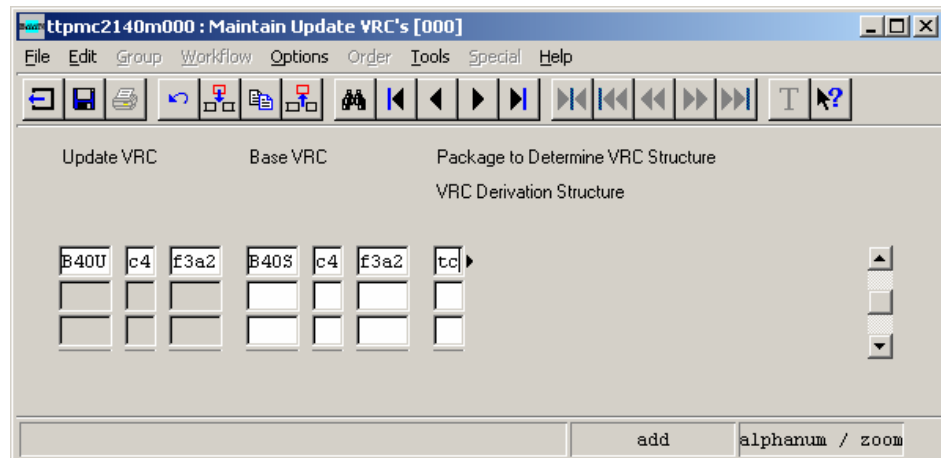
Software comp. Path on System

Software comp.	Path on System
Forms	\${BSE}/application
Menus	\${BSE}/application
Objects	\${BSE}/application
Program Script	\${BSE}/application
Functions	\${BSE}/application
Report Scripts	\${BSE}/application

add alphanum

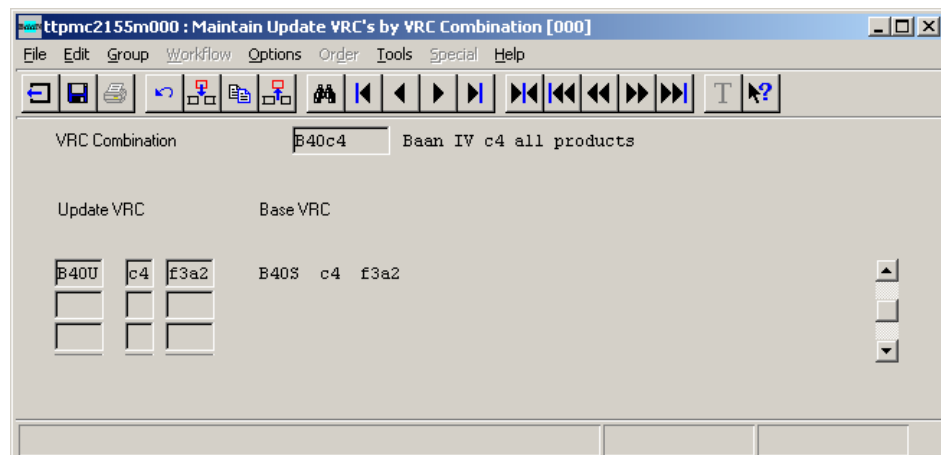
5 Add Update VRC

Start the Maintain Update VRC's (ttpmc2140m000) session and insert a new row for the Update VRC B40U_c4_f3a2, with Base VRC as B40S_c4_f3a2, package as tc.



6 Add Update VRC to a VRC Combination

Start the Maintain Update VRC's by VRC Combination (ttpmc2155m000) session and add the new Update VRC B40U_c4_f3a2 to an existing VRC Combination.

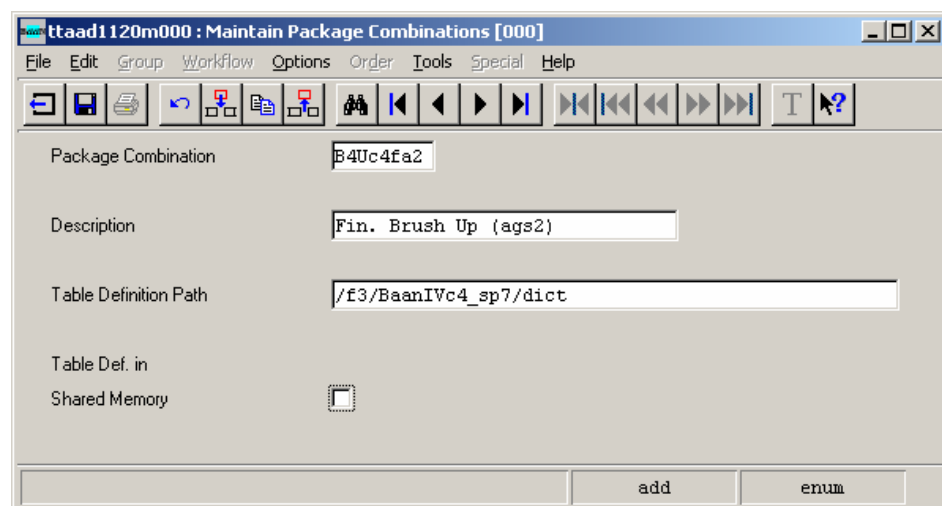


7 Download and install solution 200259

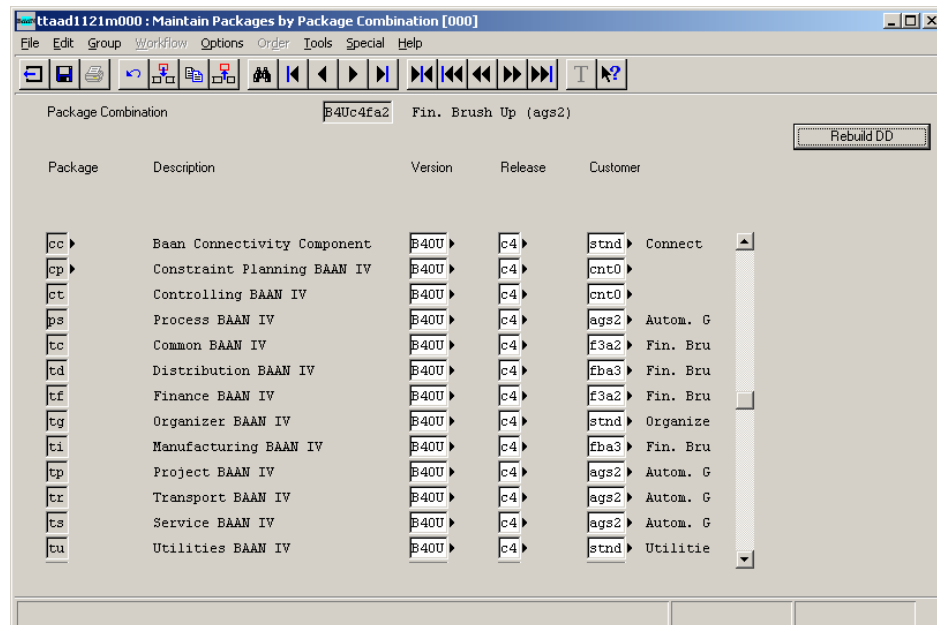
Download the PMC dump 200259f3a2 from solution 200259 on the SSA One Point Support (Baan) Web site. Install this solution in the Update VRC B40U_c4_f3a2 (as created in step 5).

8 Create package combination and Runtime DD

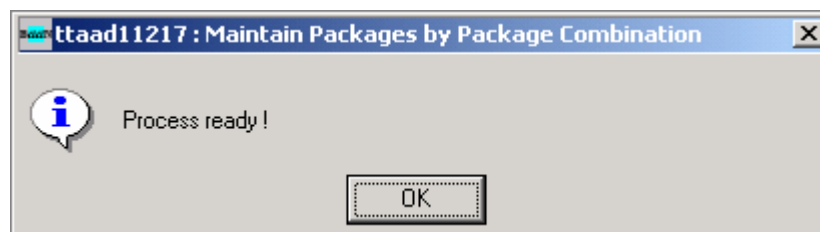
- a Start the Maintain Package Combinations (ttaad1120m000) session to create a package combination for the f3a2 extension, unless you want to include the f3a2 extension in an existing package combination.



- b Start the Maintain Packages by Package Combination (ttaad1121m000) session to maintain the package VRC's for this package combination. This package combination includes:
 - B40U_c4_cnt0 VRC for the packages cp and ct
 - B40U_c4_ags2 VRC for the packages ps, tp, tr and ts
 - B40U_c4_fba3 VRC for the packages td and ti
 - tB40U_c4_f3a2 VRC for the packages tc and tf
 - B40U_c4_stdnd VRC for the other packages such as cc, tg and tu



- c After you supply the information, click **Rebuild DD** to rebuild the data dictionary for the package combination. This process takes some time.



- d Click **OK**.

