



forward faster

▶▶ SSA® Baan IV

SSA® Baan IV Traditional Chinese Accumulation Translation SP17 Installation Guide

© Copyright 2005 by Baan International B.V., a subsidiary of SSA Global Technologies, Inc.

All rights reserved. No part of this publication may be reproduced, stored in a retrieval system, or transmitted in any way or by any means, including, without limitation, photocopying or recording, without the prior written consent of Baan International B.V.

Important Notices

The material contained in this publication (including any supplementary information) constitutes and contains confidential and proprietary information of Baan International B.V.

By gaining access to the attached, you acknowledge and agree that the material (including any modification, translation or adaptation of the material) and all copyright, trade secrets and all other right, title and interest therein, are the sole property of Baan International and that you shall not gain right, title or interest in the material (including any modification, translation or adaptation of the material) by virtue of your review thereof other than the non-exclusive right to use the material solely in connection with and the furtherance of your license and use of software made available to your company from Baan International pursuant to a separate agreement ("Purpose").

In addition, by accessing the enclosed material, you acknowledge and agree that you are required to maintain such material in strict confidence and that your use of such material is limited to the Purpose described above.

Although Baan International has taken due care to ensure that the material included in this publication is accurate and complete, Baan International cannot warrant that the information contained in this publication is complete, does not contain typographical or other errors, or will meet your specific requirements. As such, Baan International does not assume and hereby disclaims all liability, consequential or otherwise, for any loss or damage to any person or entity which is caused by or relates to errors or omissions in this publication (including any supplementary information), whether such errors or omissions result from negligence, accident or any other cause.

Baan International B.V., is a wholly owned subsidiary of SSA Global Technologies, Inc.

Trademark Acknowledgments

SSA® Global, SSA and the SSA Global logo are trademarks of SSA Global Technologies™, Inc. in the United States and/or other countries. Baan™ is a trademark of Baan International B.V., in the United States and/or other countries.

All other company, product, trade or service names referenced may be registered trademarks or trademarks of their respective owners.

Publication Information

Document code	: U8722A US
Release	: SSA® Baan IV
Document title	: SSA® Baan IV Traditional Chinese Accumulation Translation SP17 Installation Guide
Publication date	: February 05

Table of Contents

Chapter 1	Contents of the CD-ROM.....	1-1
	Contents	1-1
Chapter 2	To install the Translation Service Pack	2-1
	Preinstallation requirements	2-1
	To install the Translation Service Pack	2-2
	To install the Tools	2-2
	To install the applications	2-3
Chapter 3	Post-installation instructions	3-1

About this Guide

This is an Installation Guide that describes how to install the SSA Baan IVc4 Traditional Chinese Accumulation Translation SP17.

This document contains the following chapters:

Chapter 1, "Contents of CD ROM", gives an overview of the CD-ROM contents.

Chapter 2, "To install the Translation Service Pack", describes how to install the SSA Baan IVc4 Traditional Chinese Accumulation Translation SP17.

Chapter 3, "Post-installation instructions", describes the post-installation tasks that must be performed after installing the accumulation translation.

Send us your comments

We continually review and improve our documentation. Any remarks/requests for information concerning this document or topic are appreciated. Please e-mail your comments to documentation@ssaglobal.com.

In your e-mail, refer to the document number and title. More specific information will enable us to process feedback efficiently.

Chapter 1

Contents of the CD-ROM

1

The SSA Baan IVc4 Traditional Chinese Accumulation Translation SP17 is intended for the users of Baan IVc4.

Contents

The CD-ROM contains the following folders and documents:

Software folder:

The software folder of the Translation Service Pack CD-ROM contains the following files:

- spb40c4_17-nstnd – This is a translation file of SP1-SP17 for SSA Baan IVc4 applications.
- stb40c4_17-nstnd – This is a translation file of SP1-SP17 for SSA Baan IVc4 tools.

Documents folder:

The documentation folder of the Translation Service Pack CD-ROM contains the following documentation:

- Installation and Deployment Guide (English) – Traditional Chinese Accumulation Translation SP17.
- Installation and Deployment Guide (Traditional Chinese) – Traditional Chinese Accumulation Translation SP17.

Chapter 2

To install the Translation Service Pack

2

Preinstallation requirements

Before you can install the Baan IVc4 Traditional Chinese Accumulation Translation SP17, you must execute the following steps:

- 1 Install the Baan IVc4 master CD-ROM in US English. The installation guide can be found on the Baan IVc4 documentation CD-ROM.
- 2 Update the Baan IVc4 environment with the Traditional Chinese language from the Traditional Chinese Update CD-ROM. The same installation guide has to be used.
- 3 Install all SP's till (including) 17 (US English)
- 4 Activate the PMC B-language support. Most of the instructions in scenario 3 of the B-language Support guide can be used. The additional solutions that are mentioned in the guide are already included in later SP's and thus shall not be installed again. The accumulation translation SP 11 and the translation SP 12 do not exist; instead you can immediately install the traditional Chinese SP17. Refer to solution 123464 on the SSA One Point Support (Baan) Web site for additional information on the PMC B-language support and for the latest B-language Support guide.

To install the Translation Service Pack

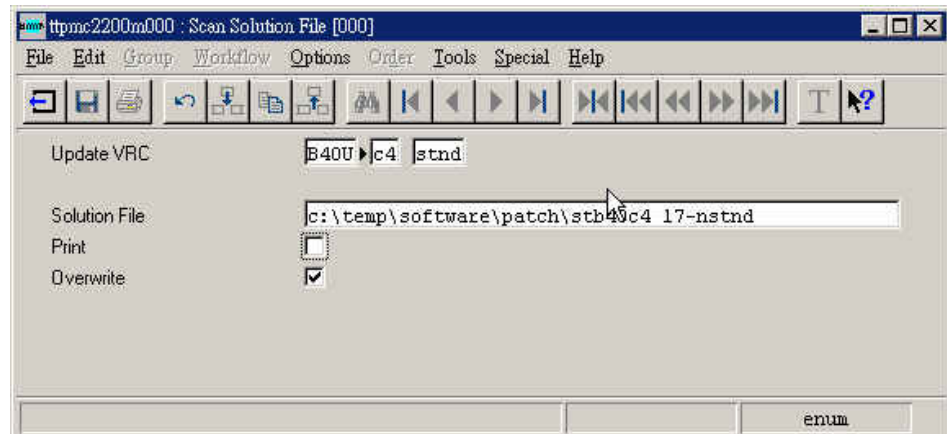
Before you install the Baan IVc4 Traditional Chinese Accumulation Translation SP17, first check if any last minute information is available about the installation of this translation. You can find this information on the SSA One Point Support (Baan) Web site under solution number 200097.

For the standard Baan IVc4 Traditional Chinese Accumulation Translation SP17, two dumps are created: one for Tools and the other for applications. The Tools translation is in a PMC dump called stb40c4_17-nstnd, whereas the Applications translation is in a dump called spb40c4_17-nstnd.

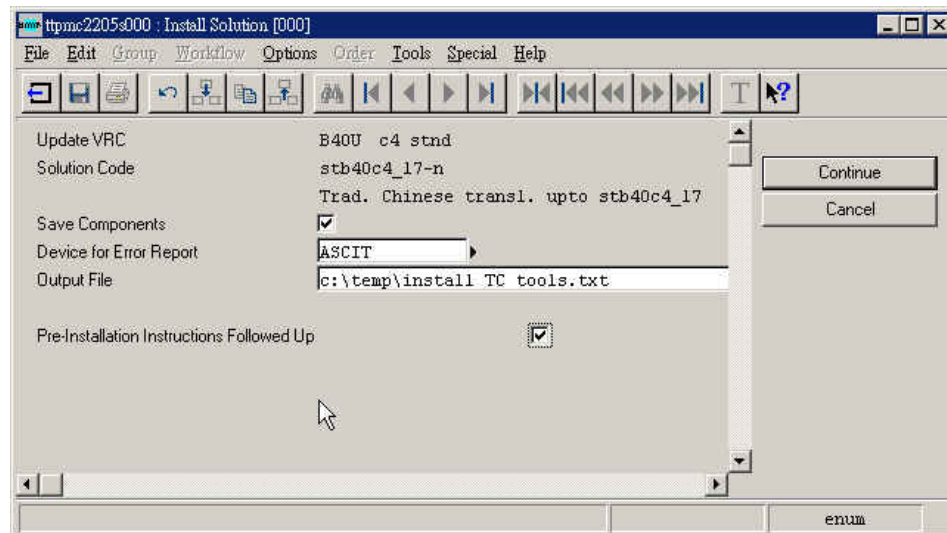
To install the Tools

To install the Tools part of Traditional Chinese Accumulation translation SP17 for Baan IVc4, take the following steps:

- 1 UNIX users must first copy the file stb40c4_17-nstnd from the software folder of the CD-ROM to a temporary directory on the UNIX system. If you copy the file, you must use a transfer protocol in binary mode.
- 2 Scan the PMC dump stb40c4_17-nstnd through the Scan Solution File (ttpmc2200m000) session. In this session you must select the **Overwrite** check box.



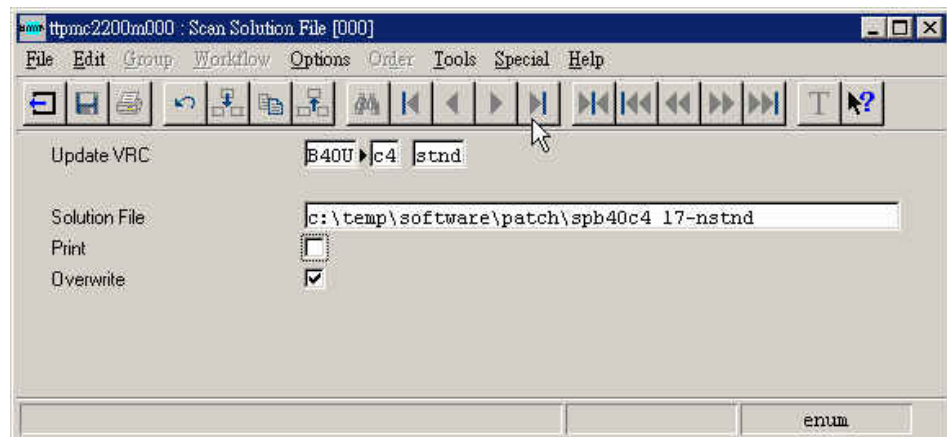
- 3 Run the Process Solutions (ttpmc2101m000) session to process the PMC dump stb40c4_17-n. This session consists of two parts: the Check Solution to Install (ttpmc2203s000) session and the Install Solution (ttpmc2205s000) session. In the Install Solution session, you must select the **Pre-Installation Instructions Followed Up** check box, otherwise, the Service Pack will not be installed.



To install the applications

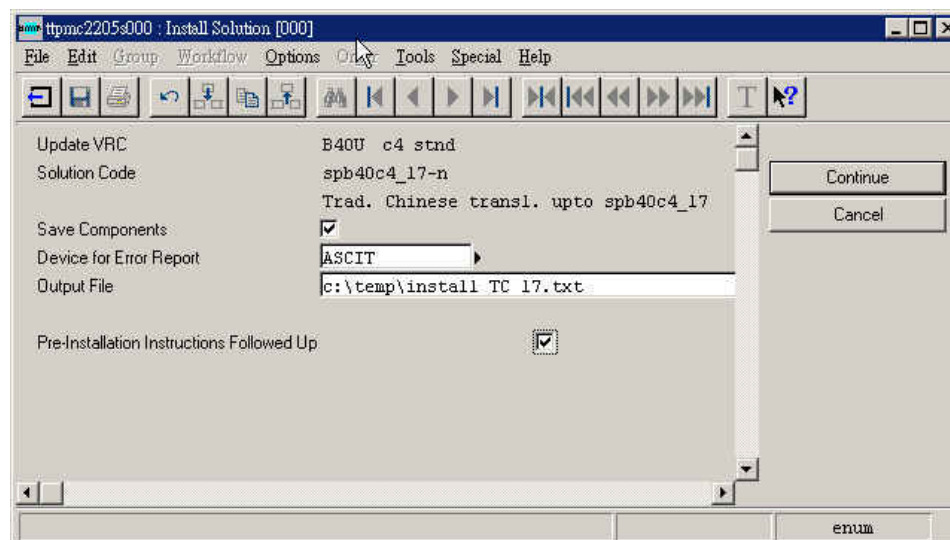
To install the applications part of Traditional Chinese Accumulation translation SP17 for Baan IVc4, take the following steps:

- 1 Unix users must first copy the file spb40c4_17-nstnd from the software folder of the CD-ROM to a temporary directory on the UNIX system. If you copy the file, you must use a transfer protocol in binary mode.
- 2 Scan the PMC dump spb40c4_17-nstnd through the Scan Solution File (ttpmc2200m000) session. In this session you must select the **Overwrite** check box.



- 3 Run the Process Solutions (ttpmc2101m000) session to process the PMC dump spb40c4_17-n. This session consists of two parts:
 - The Check Solution to Install (ttpmc2203s000) session \
 - The Install Solution (ttpmc2205s000) session.

In the Install Solution session, you must select the **Pre-Installation Instructions Followed Up** check box, otherwise, the Service Pack will not install.



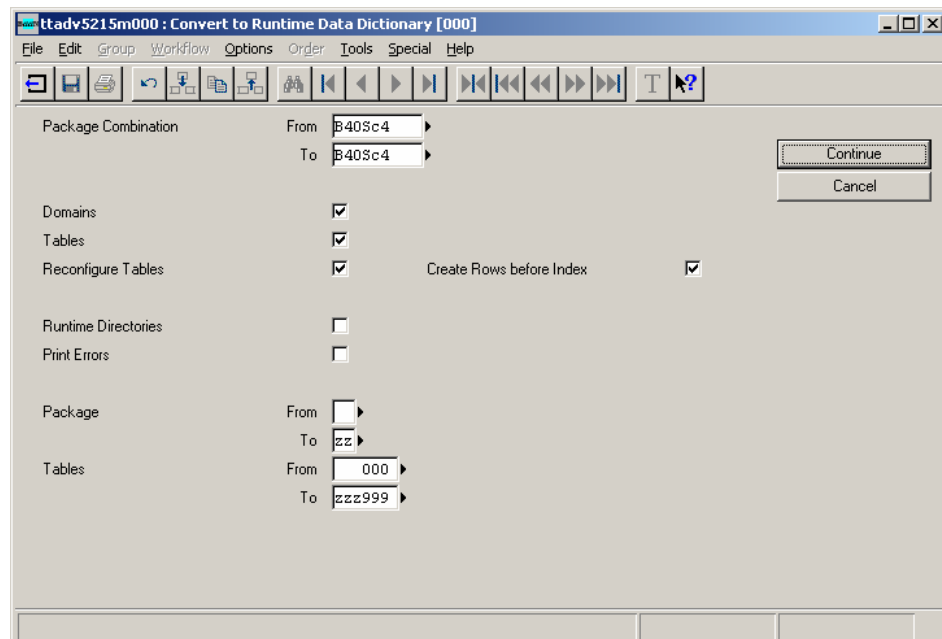
Chapter 3

Post-installation instructions

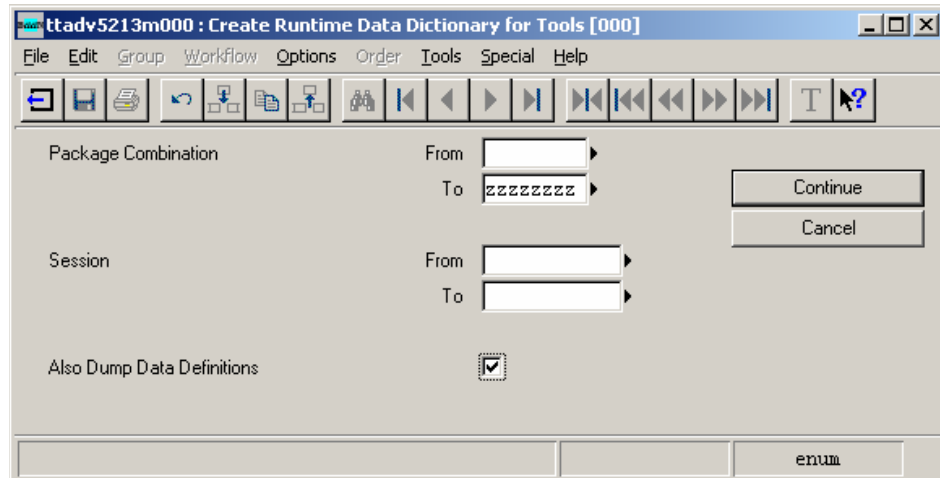
3

After installing the translation dumps, you must execute the following actions:

- 1 Use the Convert to Runtime Data Dictionary (ttadv5215m000) session to convert language dependent components to the runtime data dictionary. Select the related Package Combinations. Mark the check boxes for Domains, Tables and Reconfigure Tables. Do not mark the check box for Runtime Directories. Select the full ranges of Packages and Tables.



- 2 Use the Create Runtime Data Dictionary for Tools (ttadv5213m000) session to convert language dependent tools components to the runtime data dictionary. Select the full range of Package Combinations. Do not select any sessions. Mark the check box for **Also Dump Data Definitions**.



- 3 Exit the bshell. If Baan Tools components are loaded in shared memory, which is often the case on MS Windows systems, stop and restart the shared memory. Restart the bshell.
- 4 Use the Compile / Dump B-Language Components (ttpmc3210m000) session to compile the reports and dump the forms and menus in the related language. In this session please select the Installation Runs wherein the SP translation dumps were installed via PMC. Do not enter the patch code in the Solution Code field!

ttpmc2503s000 : Display Installation Runs [000]

File Edit Group Workflow Options Order Tools Special Help

Run Update VRC Solution From Solution To Date Time BAAN User

1	B40U	c4	stnd	stb40c4_16	stb40c4_16	15-06-04	17:20	baan
2	B40U	c4	stnd	spb40c4_16	spb40c4_16	11-03-04	11:56	baan
3	B40U	c4	stnd	stb40c4_17	stb40c4_17	12-03-04	14:40	baan
4	B40U	c4	stnd	spb40c4_17	spb40c4_17	12-03-04	15:45	baan
✓ 13	B40U	c4	stnd	spb40c4_17-n	spb40c4_17-n	07-04-04	10:25	baan

OK

Cancel

first

ttpmc3210m000 : Compile / Dump B-Language Components [000]

File Edit Group Workflow Options Order Tools Special Help

Selection

From To

Installation Run 13 13

Update VRC

Solution Code

Compile/Dump

Cancel

Options

Reprocess ☐

Print Errors Only ☒

alphanumeric / zoom

