



forward faster

SSA® ERP 5.2

User's Manual Intrastat / IDEP (SOL146559)

© Copyright 2004 by Baan International B.V., a subsidiary of SSA Global Technologies, Inc.

All rights reserved. No part of this publication may be reproduced, stored in a retrieval system, or transmitted in any way or by any means, including, without limitation, photocopying or recording, without the prior written consent of BaanTM International B.V.

Important Notices

The material contained in this publication (including any supplementary information) constitutes and contains confidential and proprietary information of Baan International B.V.

By gaining access to the attached, you acknowledge and agree that the material (including any modification, translation or adaptation of the material) and all copyright, trade secrets and all other right, title and interest therein, are the sole property of Baan International and that you shall not gain right, title or interest in the material (including any modification, translation or adaptation of the material) by virtue of your review thereof other than the non-exclusive right to use the material solely in connection with and the furtherance of your license and use of software made available to your company from Baan International pursuant to a separate agreement ("Purpose").

In addition, by accessing the enclosed material, you acknowledge and agree that you are required to maintain such material in strict confidence and that your use of such material is limited to the Purpose described above.

Although Baan International has taken due care to ensure that the material included in this publication is accurate and complete, Baan International cannot warrant that the information contained in this publication is complete, does not contain typographical or other errors, or will meet your specific requirements. As such, Baan International does not assume and hereby disclaims all liability, consequential or otherwise, for any loss or damage to any person or entity which is caused by or relates to errors or omissions in this publication (including any supplementary information), whether such errors or omissions result from negligence, accident or any other cause.

Baan International B.V., is a wholly owned subsidiary of SSA® Global TechnologiesTM, Inc.

Trademark Acknowledgments

SSA Global, SSA and the SSA Global logo are trademarks of SSA Global Technologies, Inc. in the United States and/or other countries. Baan is a trademark of Baan International B.V., in the United States and/or other countries.

All other company, product, trade or service names referenced may be registered trademarks or trademarks of their respective owners.

Publication Information

Document code : -
Release : 1.0
Document title : User Manual Intrastat / IDEP (SOL146559)
Publication date : Oktober 2004

Table of Contents

Chapter 1	Introduction	1-1
	Purpose	1-1
	Definitions, acronyms, and abbreviations	1-2
	References	1-5
	Environment.....	1-6
Chapter 2	New features.....	2-1
Chapter 3	Setting up SSA ERP5.2 for Intrastat	3-1
Chapter 4	Export Data to from SSA ERP to an external application (IDEP/IDES/IRIS/Excel)	4-1
	Purpose	4-1
	User Interface selections.....	4-1
	SSA ASCII file.....	4-5
	Definition IDEP CSV	4-5
	Conversion rules Definition IDEP CSV.....	4-8
	Saving the Export SSA ERP data file.....	4-9
	How to use the IDEP Package	4-9
	Download and installation.....	4-9
	Configuration set-up	4-11
	Import Data from SSA ERP to IDEP	4-13

About this Guide

Disclaimer of liability

The documentation belongs to solution number 146559, and gives extra information about the SSA ERP5.2 Intrastat functionality. The status of this document is that it is not official documentation by the KD department but acts as a temporary documentation until the official session help is written.

SSA Global does not warrant or assume any legal liability or responsibility for the accuracy, completeness, of the description of the Intrastat Data Entry Package (IDEP) functionality in this document.

Send us your comments

We continually review and improve our documentation. Any remarks/requests for information concerning this document or topic are appreciated. Please e-mail your comments to arno.pluijm@ssaglobal.com.

In your e-mail, refer to the document number and title. More specific information will enable us to process feedback efficiently.

Purpose

Intrastat is an abbreviation of Intra EC Trade Statistics. The current Intrastat system came into existence at the beginning of 1993, at the same time as border controls between EU members were abolished.

Prior to 1993, every shipment of goods passing from one EU member state to another - from Britain to France, for example - had to be accompanied by export documentation, which identified the nature and value of the goods, its origin and destination. As well as being used for the collection of taxes and duties, the information collected via these forms was used by the individual national governments of the EU member states to compile trade statistics and national balance of trade computations.

Since border controls were abolished, this source of information ceased to be available and instead the Intrastat system was introduced. The basis of Intrastat is that, every time goods cross from one state to another within the EU, an Intrastat declaration has to be made. However, instead of completing a form at the border, the information instead has to be submitted at the end of the month.

The purpose of this document is to describe the new EU Intrastat solution, which makes internal SSA® ERP data on Intra European Import/Export, available for Statistics Authorities via an interface to the Intrastat Data Entry Package (IDEP).

Definitions, acronyms, and abbreviations

Term	Description
ICN	See Commodity Code
SSA ERP	SSA Enterprise Resource Planning
Intrastat	Intrastat is the system for collecting statistics on the physical trade in goods (i.e. the actual movement of goods) between the Member States of the European Union.
Point of Title Passage	<p>The point at which the legal ownership changes. At this point, the risk passes from the seller to the buyer.</p> <p>In Intrastat this can be used to derive the Terms of Delivery Place as required by XML</p>
Supplementary Unit	<p>The requirement for Supplementary Units is part of the Intrastat Classification Nomenclature (ICN), and only applies to certain classes of products. The nature of the Supplementary Unit depends on the product; commonly, it may be the number of units, or the volume in liters, or the area in square meters. As examples:</p> <p>Live animals: the number of animals shipped</p> <p>Skis: the number of pairs</p> <p>Diamonds: the weight in carats</p>
Financial Company	A company that is used for posting financial data in SSA ERP Finance. You can link one or more enterprise units from multiple logistic companies to one financial company. A Financial Company resides in a country and has a VAT number. This means that it is a declarant for Intrastat. In Intrastat Offices are linked to Enterprise Units which are linked to Financial Companies.

Terms of Delivery	<p>Obligations on the seller and purchaser concerning movements of goods as defined by the International Chamber of Commerce:</p> <p>EXW Ex Works FCA Free Carrier FOB Free Alongside Ship CFR Cost and Freight CIF Cost, Insurance and Freight CPT Carriage paid to agreed destination CIP Carriage and Insurance paid to agreed destination DAF Delivered at Frontier DES Delivered Ex Ship DEQ Delivered Ex Quai DDU Delivered Duty Unpaid DDP Delivered Duty Paid XXX Delivery terms other than the above</p>
IDEP	<p>Intrastat Data Entry Package (IDEP) Software package that is commissioned by the Eurostat office in Brussels, which can be used to prepare declarations. Its use is accepted in all EU countries except Britain, Germany, and the Netherlands, and it can be obtained free of charge either through the post or by download from the national Intrastat website.</p>
IRIS	<p>Interactieve Registratie voor de Internationale Handel Software package which is commissioned by the Dutch "Centraal Bureau voor de Statistiek" and can be used to prepare declarations only in the Netherlands. Free of charge.</p>
IDES	<p>Intrahandels Daten Erfassung Software (IDES) Software package which is commissioned by the Statistisches Bundesamt and can be used to prepare declarations only in Germany. Free of charge.</p>
Excel	<p>Microsoft Spreadsheet Software Package that can display data in rows and columns. In UK Excel files can be used for Intrastat declaration.</p>

ASCII	<p>American Standard Code for Information Interchange</p> <p>The standard code used for information interchange among data processing systems, data communications systems. The ASCII character set contains 128 coded characters, each ASCII character is a 7-bit coded unique character, and the ASCII character set consists of alphabetical characters as some control characters and graphic characters.</p>
Intrastat Declaration Format	The following file formats are supported: CSV, FRL and XML
CSV	<p>a CSV (comma-separated values) file contains the values in a table as a series of ASCII text lines organized so that a comma from the next column's value separates each column value and each row starts a new line. Here's an example:</p> <p>Doe,John,944-7077</p> <p>Johnson,Mary,370-3920</p> <p>Smith,Abigail,299-3958</p> <p>A CSV file is a way to collect the data from any table so that it can be conveyed as input to another table-oriented application., Spreadsheet (like Microsoft Excel) or relational database application, can read CSV files. A CSV file is sometimes referred to as a flat file.</p>
FRL	<p>Fixed Record Length, every field in a record has the same length as the same field in another record.</p> <p>Here's an example:</p> <p>Doe John 944-7077</p> <p>Johnson Mary 370-3920</p> <p>Smith Abigail 299-3958</p>
XML	<p>Extensible Markup Language, international text processing standard in which all data elements are surrounded by a start-tag and an end-tag. Elements can be grouped by tags.</p>

The Intrastat Message INSTAT/XML protocol has been published and the SSAERP Intrastat implementation is according this specification.

Here's an example:

```
<Employee>
<FirstName>John</FirstName>
<FamilyName>Doe</FamilyName>
<Phone>944-7077</Phone>
</Employee>
```

(SSA ERP LN only)

ASIS	<p>"Additional Statistical Information Sets", a way of linking non-SSA ERP data to a purchase or sales order. Up to 15 fields can be defined.</p> <p>Example: Most of the data like e.g. Commodity Code can be modeled in SSA ERP, some like "Nature of Transaction" can be modeled via the ASIS.</p>
------	---

References

The following documents were used.

No.	Document	Stored in
1	Conceptional Solution	Powerdocs 15179
2	http://www.google.nl using keyword "Intrastat"	
3	WD EU Intrastat country specific Mapping between SSA ERP and IDEP	Powerdocs 26253
4	IRIS Handleiding 2003, www.cbs.nl	

Environment

The task of reporting Intrastat to the authorities is for medium and large enterprises and often performed by the Finance department of an enterprise, in SSA ERP terminology an Office (Department) linked to a Financial Company. This Office should have a VAT number, and reside in a EU Country. All transactions related to this VAT number to another European country should be periodically sent

For all EU countries there are common requirements of data to be send, and country specific data to be send. Some of the data is in SSA ERP, some of this data must be made available via linking data with the EU Intrastat module itself.

Changes in Intrastat legislation and reporting

The declaration contents required by the authorities and the submission to the authorities can also vary per year, per country, because of (autonomous) decisions by the governments.

This means that the Intrastat solution should be more configurable and more data should be logged.

Since in the new solution reports are not used anymore, but an export ASCII CSV file, and an external package (IDEP, IDES, IRIS or Excel) for reporting to the authorities, the SSA ERP software becomes less vulnerable to changes.

Declarations were done in the past on paper, later by tape, diskette. Through the IDEP, IDES or IRIS package it is possible to do declarations by CD, modem, or email.

The SSA® ERP 5.2 Intrastat solution has the following new features:

More detailed transaction logging

Intrastat transactions are received from all packages via Warehousing. Also transactions are booked like transactions of Order Management and Service. It is now possible to log Intrastat per receipt or shipment.

Intrastat will also be modified when prices are changed in purchase orders, sales orders and service orders, after a Intrastat record has been written via Warehousing (shipments and receipts).

Together with this subject it was needed to administrate Intrastat records per Bill of Material (BOM) component.

See new index fields in “Intrastat Transactions” (tccom7171m000).

More data logged per transaction

The data with information needed by the statistics authorities are extended, like home state, province (e.g. Belgium, France), and attributes for internal auditing reasons. See new table fields in “Intrastat Transactions” (tccom7171m000) Terms of Delivery, Point of Title Passage, Carrier, Mode of Transport, Ship-from Address, Ship-to Address, Invoice-from Address, Invoice-to Address, own VAT number, Partner VAT number)

Non ERP data support improved

Some data that is required by Intrastat is not known within SSA ERP. An example is attribute "Nature of Transaction A", which has in many cases the value "1" which means "All transactions involving actual change".

This is reflected in the entity "Additional Statistical Information Set Definition" (tccom7104m000) and "Additional Intrastat Info" (data) (tccom7505m000). Additional Intrastat Info is now extended for future use by doubling the number of free definable fields to 15. The set can be linked to transactions.

The reason to have an extra definition file is to prevent that Additional Intrastat Info's exist with completely different data, which will cause errors in mapping with IDEP or another external package.

Multisite support improved

Each financial company can reside in a different European country, which results in "Intrastat EU Parameters" (tccom7500m000) per Financial company. The country code has been added to Additional Statistical Information Set Definition (tccom7104m000), Additional Statistical Information Set (tccom7505m000), Intrastat Mapping Scheme (tccom7120m000)

Process Import/Export statistics (tccom7271m000) covers most of the country specific EU rules

The session makes transactions available to IDEP or another external package for the Intrastat declaration via a CSV or FRL format. The session offers now

- Configurable rounding, formatting of amounts (Invoice Value, Supplementary Units and Weight) since some European Community member states have different rules (see "EU Intrastat Parameters" (tccom7500m000))
- Configurable mapping of fields "Intrastat Mapping Scheme" (tccom7120m000) due to country / language differences. For Incoterms this can be modeled as an extra attribute in entity "Terms of Delivery";. Example of a translation is Term of Delivery is "CIF" or "CFR" and in Italy both become "C". Another example is the Flow, which is modeled as "Receipt" and "Issue", but stored in the SSA ERP database as 1 and 2. In Germany the code is 1 or 2, in the Netherlands 6 or 7, and in most countries A or D.

- Block intrastat transactions for export to mark records that are only indicative to match with sales listing, but have no legal status for Intrastat. Other reason to have this is to temporary disable a record for instance in case a commodity code is erroneously linked to a service item.

External of Central Bank rates

In some European countries it is not allowed to use internal exchange rates for sales and purchase. Reason is they often have been set for a fixed period and have margins to cover exchange rates fluctuation losses. Also margins are used to cover money exchange costs, insurance etc. A new rate has been introduced "External Exchange Rate" which is independent of the rate used on the Sales Order/Purchase Order/Service Order/etc. External Rates are published by official banks like the European Central Bank, Bank of England (UK only). The External Exchange Rates in SSA ERP5.2 have to be in sync with the official exchange rates.

The external Exchange Rate is not mandatory

Chapter 3

Setting up SSA ERP5.2 for Intrastat

3

Since the scope of Intrastat is trade between countries, which are member of the European Union, the settings should be according the geographical and legal situation.

Currency

The financial companies (Entity, Office) should have the dependent multi currency system or single currency system.

It is not allowed to use a independent currency system in Europe, because most of the amounts cannot be converted to local currencies.

In the dependent multi currency the local currency should be the Euro for countries, which are member of the European Economic Monetary Union (EMU). For all other EU countries the local currency is the national currency.

If your country is in a “change over” period in which it is allowed to use both currencies, you can choose between the Euro and national currency as local currency.

However if the authorities demand the declaration in the other currency, it is also possible to define in IDEP a conversion rule.

The real local currency conversion takes place during “Export Data to from SSA ERP to IDEP”.

Please also define the Exchange Rates and types in SSA ERP.

Multisite / sharing of tables

Intrastat transactions are logged per Office (Enterprise Unit), Entity Type. Enterprise Units are linked to financial companies and financial companies are declaring "bodies" with a VAT number. Intrastat declarations are sent to Intrastat authorities by VAT number.

Intrastat transactions are stored by financial company, and have to be exported by financial company.

Intrastat transactions can be shared when the base data (like item, commodity codes etc) are also shared

Data setup of Additional Statistical Information Set Definition" (tccom7104m000) and "Additional Statistical Information Sets" (tccom7505m000). Intrastat Mapping Scheme (tccom7120m000) can be per Country so these entities can be shared.

Please consult Peter van Dam (jpvdam@baan.com), Multisite Architect, for advise.

Intrastat and Sales Listing

In some countries auditors use the Sales Listing is used to check the Intrastat data and visa versa. In some countries on high level, the Intrastat Collection Center, Intrastat and Sales Listing are compared.

Hereafter a overview of differences and similarities are given:

	Intrastat	Sales Listing
Movement of goods	Only between European Countries	Only between European Countries
	Import/Export	Export
VAT number own	Mandatory	Mandatory
VAT number partner	Not Mandatory	Mandatory
Currency	Local Currency	Local Currency

Reporting	Goods value, quantities, commodity code, transaction details	Goods value, Total per customers.
-----------	--	--------------------------------------

Setup of other data within SSA

The Office (e.g. Warehouse/Service/Sales/Purchase) you report from must be linked to financial company.

An address with VAT number must be defined for your financial company.

The financial company must reside in your EU country.

Your financial company must have a dependent currency system, or a single currency system. The Intrastat reporting currency should be configured as local currency (in most of the EU countries the EURO). If this is not the case it is the responsibility of the user to do a conversion of the exported data.

Currency rates must have been defined between local currencies and transaction currencies related to your financial company.

Business Partners must have addresses. ISO Countries must be defined for an address.

Sometimes on the Address the states and provinces have to be configured for your country (please ask the Intrastat Authorities in your country)

The Commodity Code can be configured in Item Data. (If you do not want it, it must be done in IDEP per Item Code, but then a maintainability problem of Item codes with the SSA ERP system and IDEP has been created, and Reporting Unit and Quantity per Reporting Unit cannot be configured and made effective).

For translation to Nr Supply Units the Inventory Unit is needed on Item data and the Conversion Factors have to be defined (on item or item group level)

In some countries the Country of Origin of the item must be reported. This can be configured on Item data.

Weight and Weight Unit should also be configured on item data. Even if your inventory unit is in kg.

Terms of Delivery (Incoterms) (like "CIF" or "CFR") has to be defined in Intrastat Mapping Scheme if in your country it has to be reported differently from the Incoterm (Example "CIF" or "CFR" and in Italy both become "C").

Flow conversion has also to be defined in Intrastat Mapping Scheme
Example: Flow is in SSA ERP functionally modeled as "Receipt" and "Issue", but stored in the database as 1 and 2. In Germany the code is 1 or 2, in the Netherlands 6 or 7, and in most countries A or D.

Intrastat EU Transaction Parameters

If in Intrastat EU Transaction Parameters the field Method of Logging Cost/Service Items is on:

"Never", Cost and Service Items are not allowed.

"Always", Cost and Service Items are logged

"If Commodity code filled", in Service and Maintenance only Cost and Service Items are logged when the Item has a Commodity Code filled.

When Export Data to from SSA ERP to IDEP or another application, the Intrastat Authorities in your country may impose rules on formatting on amounts.

Example of the situation in 2003:

In the UK the Invoice Value must be in whole British Pounds rounded up.
In Spain the Invoice Value must be in Euros with 2 decimals but with a "," as Fraction Separator.

IDEP supports whole numbers in Weight, but also fractions of 2 decimals with "." As Fraction Separator. However in the UK only whole numbers can be passed.

So for Luxemburg a setting could be

Parameter	Value
Invoice Value Number of Decimals	0
Invoice Value Fraction Separator	
Invoice Value Rounding Method	Normal
Supplementary Unit Quantity Number of Decimals	0
Supplementary Unit Quantity Fraction Separator	
Supplementary Unit Quantity Rounding Method	Normal
Weight Number of Decimals	2
Weight Fraction Separator	.
Weight Rounding Method	Normal

For the UK

Parameter	Value
Invoice Value Number of Decimals	0
Invoice Value Fraction Separator	
Invoice Value Rounding Method	Up
Supplementary Unit Quantity Number of Decimals	0
Supplementary Unit Quantity Fraction Separator	
Supplementary Unit Quantity Rounding Method	<Not known>, please ask http://www.hmce.gov.uk
Weight Number of Decimals	0
Weight Fraction Separator	
Weight Rounding Method	Up

Supplementary Unit Quantity

The Supplementary Unit Quantity is derived from the Quantity expressed in item but converted to the unit as linked to the commodity code:

Example a we have item "Apres Ski liquor" expressed in Unit pieces (bottles). The commodity code 21069020 "Compound alcoholic preparations" is expressed in Reporting Unit "Liter" alcohol

The calculation is now:

Supplementary Unit Quantity = (Quantity * Quantity per Unit) /
Conversion Factor)

Quantity per unit is defined per item/itemgroup, for example
alcoholpercentage = 50 %

item: "Apres Ski liquor"

base unit: bottle

unit: lac (liter alcohol) conv fator = 2

means 1 liter alcohol = 2 bottles

When 4 bottles "Apres Ski liquor" is shipped then

Supplementary Unit Quantity = 4 / 2 = 2 liter pure 100% alcohol

The Supplementary Unit Quantity should be rounded depending on the Reporting Unit

Weight

The Weight is derived from the Quantity expressed in Weight of item and Weight unit of item.

Example item "Sand Truck"

Weight of item = 10 000

Weight unit of item = kg

Quantity = 5

$\text{Weight} = \text{Quantity} * \text{Weight of item [unit Weight unit of item]}$

$\text{Weight} = 5 * 10\,000 \text{ [kg]} = 50\,000 \text{ [kg]}$

The Weight should be rounded depending on the Weight Unit of the item.

Making Intrastat corrections

Intrastat Transactions can be corrected in IDEP or in SSA ERP using session “Intrastat Transactions”.

Data not related to Invoice Value or the Quantity can be altered on existing data (if not processed), other data can be corrected by pressing the “copy” button on an existing record. This will create a new record of Order Origin “Manual Correction”.

Reason for following this procedure is that all non-manual Order Origin should always be in line with Finance data for auditing reasons.

If you press the insert button you are entering a transaction that was not logistically recorded in SSA ERP so Order Origin is “Manual Transaction”.

If you want to suppress a Intrastat record for export, mark in “Intrastat Transactions” the “Blocked for Export” flag.

Chapter 4

Export Data to from SSA ERP to an external application (IDEP/IDES/IRIS/Excel)

4

Purpose

EU Intrastat declarations are delivered to the Intrastat Authorities by software packages IDEP, IDES (Germany), IRIS (The Netherlands), Excel (UK). Also Instat/XML is supported in some European countries. IDEP can also produce XML.

To fill this package with data from SSA ERP a process is defined with an export ASCII CSV file as output. This file can be saved on the server as well as on the client.

User Interface selections

Mode

- On-line
- Background (but then without a "save as" dialogue on client)

Input

Financial Company
Enterprise Unit (range)
Entity Type (range)
Office (range)
Order Origin (range)
Order (range)
Flow (range)
Position (range)
Sequence Number (range)
Transaction Date (range)
Item (range)

Normally you will export

- For an Entity, Office combination(s) which are part of the same Financial Company for which you are responsible.
(if you include multiple financial companies in your selections a error is given)
- A Flow (Normally Issue or Receipt, **not in a range**)
- For a period, the period since the previous declaration, of which the records have subsequently status processed
In this case you leave the From Date minimal (empty), do not include processed lines, fill in the To Date representing the end date of the period you want to declare

Options:

Options	Default	Meaning
Simulate	Yes	Does not mark the record as exported. This is added for test purposes to see if the export to ASCII file is correct. When you are simulating it can be useful to import in Microsoft Excel for viewing purposes. Microsoft Excel can also be used for data manipulation. Be careful: if you save in Excel always as "CSV" format, otherwise it is unreadable by IDEP.
Including Processed Lines	No	If your exported records are marked then in principle it is not possible to export again. But if, by accident, something went wrong with your IDEP data and you do not have your export file available anymore, it is possible to regenerate again, but you have to use the same selection range again (like transaction date).
Recalculate Amounts with Declaration Exchange Rates	No	If Yes the Declaration Exchange Rate type will be taken for determining the Invoice value in local currency.
Declaration Exchange Rate type	the External Exchange Rate type as defined in Companies (tcomm)	See "Recalculate Amounts with Declaration Exchange Rates"
Allow Exporting in Transaction Currencies	No	During processing records that have a Invoice Value that cannot be converted to Local Currency are skipped. If the option is Yes they will be processed. However before issuing the Intrastat the translation to local currency have to be done outside SSA ERP !

Reference Period		<p>To identify a record in which period the declaration will be made. For instance 2004-05 (means May 2004) or 2004-1 (means first quarter 2004)</p> <p>How often a declaration will be made depends on your Intra EU turnover and can be determined after consultation with the local Intrastat authorities.</p>
File Data Format	CSV	<p>CSV = CSV/FRL format XML = Instat/XML format (only in SSA ERP LN)</p>
File Data Format = CSV		
Header	Yes	<p>CSV can have a header with field names. Use “No” for FRL format ASCII file, since all data must have the same length.</p>
Separator	;	<p>Separates the columns:</p> <p>CSV format: It is advisable to use the “,” as delimiter, since the “,” may be used in data.</p> <p>FRL format: leave it empty (this will be interpreted as a space between 2 fields)</p>
Squeeze field	Yes	<p>Yes means that the fields are squeezed, compressed to its minimum actual length. Example “4”. Used in CSV formats.</p> <p>No, means that the fields have the original length. . Example “ 4”. Used in FRL formats.</p>
File Data Format = XML		<p>For all fields below see chapter “Error! Reference source not found.” for the link to the INSTAT/XML definition. For specific information about the attribute ask your local Intrastat authorities</p>

Output:

ASCII file. For the content definition of the file see next chapter.

SSA ASCII file

Definition IDEP CSV

To have all the information available in IDEP, the following data will be exported to the CSV ASCII file:

Mandatory	Name in IDEP	Name in SSA ERP	Example	Example
Yes	Flow	Flow		
		Transaction Date	Date of Import/Export	
	CN8 Goods Code	Commodity Code	Also mapping can be done between Item and Commodity code in IDEP	1011100 (Pure-bred breeding horses)
	PSI Code	Item		Example "Arabic horse 12 year" when mapping is done in IDEP
	PSI Code Description	Item Description		Example "Pure-bred breeding horse 12 years with 1 year guarantee"
Yes	Invoice value	Amount in		234

	Euro	local currency)	(rounded)
Yes	Currency (Euro)	Possibly only needed for 2001	EUR
Yes	Nr Supply Units	Supplementar y Unit Quantity	certain CN8 codes are related to pieces this is the number Example 2 (pieces)
Yes	Weight	Weight	1700
Yes	Mode of Transport	Mode of Transport	1 (Transport by sea)
Yes	Incoterms	Terms of delivery	CIF (cost freight insurance)
Yes	Partner Country	Partner Country	DE (Deutschland)
Yes	Partner VAT Number		DE12345678 9
Yes	National Region/Depar tment/Bundes land etc	Home State/Provinc e	04 (Alpes Hte Provence)
	Country of Origin	Country of Origin	Country in which the original was manufactured TN (Tunisia)
No	Reference	Reference	Free format string for trace ability, for instance shipment number. 1000000032
		Reserved 1	For future use if extra SSA

			fields should be exported. To avoid mandatory shifting fields ASIS
		Reserved 2	See above
		Reserved 3	See above
		Reserved 4	See above
		Reserved 5	See above
Yes	ASIS 1 e.g. Nature of Transaction A	via ASIS	1 (All transactions involving actual change)
Yes	ASIS 2 e.g. Nature of Transaction B	via ASIS	1 (Outright/purchase/sale)
	ASIS 3 Regime Statistique	France via ASIS	29 (Autres Expeditions)
	ASIS 4 Situation de Lieue (France)	France via ASIS	2 (Lieu situe dans l'etat membre concerne)
	Up to ASIS 15		

If a imported field is in SSA ERP larger than in your declaration package then

1. in CSV a runtime overflow can happen, IDEP will mark this record as incorrect the user will have to split amounts, weights over multiple records in IDEP.

2. in FLR in the import definition the field starting point has to be shifted to the maximum field definition

For some important data the following limits are known in field length for numeric fields:

Name	SSA ERP	IDEP	IRIS
Invoice value	15	10	11
Nr Supply Units	15	13	11
Weight	15	10	11

To have all the information available in IRIS (FRL) the same definition is used as for IDEP (CSV).

Imaginary example FRL definition :

12345678901234567890

44 ITEM GB

Import definition

	Position	Length
Amount	1	5
Item	7	6
Country	15	3

Conversion rules Definition IDEP CSV

The reporting currency for Intrastat is the SSA ERP local currency. For most countries it is the Euro.

SSA ERP logs the EU Intrastat transaction in transaction currencies like US Dollars, Euros.

Corrections in transactions can be made in EU Intrastat.

This means when "Exporting Intrastat Transactions" to the ASCII CSV file, a conversion has to take place to the local currency. If the currency rates do not exist, because of they are not defined within SSA ERP, the non-translated foreign currency and amount will be exported.

In IDEP it is also possible to do manual corrections. Intrastat requires some Commodity Codes to be expressed in supplementary units. This means that when "Exporting Intrastat Transactions" to the ASCII CSV file a conversion has to take place.

Saving the Export SSA ERP data file

When Exporting data, the file is saved in the bse.tmp.dir\$ directory of the server with a generated tmp filename. This is done for performance reasons.

Example on UNIX

/g1/gemini/bse/tmp/tmp001594080

After the total process is finished it can be saved locally on the client via FTP or File Manager. Since this file has a CSV format, use for IDEP the file type the .csv extension. In SSA ERP LN a dialogue box is shown to save the file on the client.

For Microsoft Excel it can be decided to save as a .csv extension after import, to define the delimiter symbol for column separation. The file has a header row with column names.

How to use the IDEP Package

Some of the countries make the IDEP Software downloadable from Internet, other countries require ordering a free CD.

Download and installation

Example Luxembourg IDEP version 2001 (languages French, German and English)

http://www.statec.lu/html_en/intrastat/index.html

Click on Download (22.8 Mbytes)

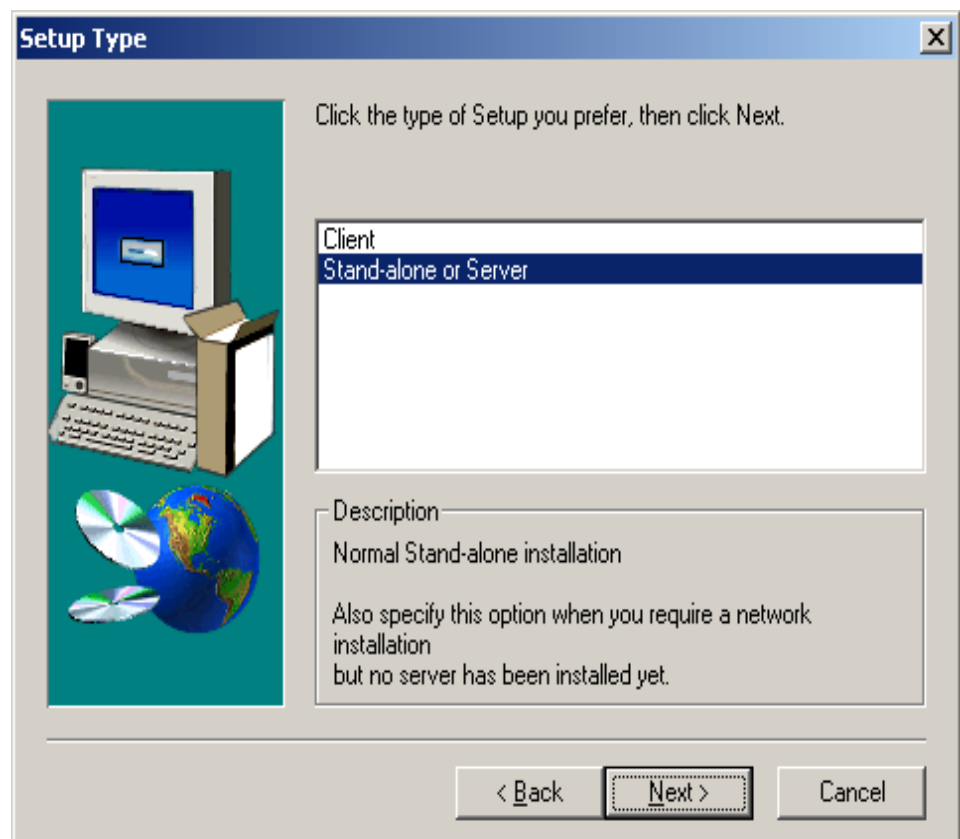
Select a directory e.g. c:\temp

After download you see a file in c:\temp media.exe

Execute media.exe (automatically unzips

Run setup.exe

Choose type of setup "Stand-alone or Server"



Choose folder here is chosen *c:\program files\intrastat*

The last action is pressing the finish button.

The IDEP main entry is in *c:\program files\intrastat*, while the Luxembourg specific information is in the LU subdirectory

Configuration set-up

Start the IDEP Program by Login.exe, and choose language (in this case *English*)

Choose Application, Year 2001

User (in this case *IDEP*), Password (in this case *IDEP*) and press the OK button

The screenshot shows the IDEP/CN8 login window. The title bar reads 'IDEP/CN8'. The window is divided into several sections. On the left, there are four input fields: 'Application' with a dropdown menu showing 'IDEP', 'Year in four digits' with a dropdown menu showing '2001', 'User' with a text box containing 'idep', and 'Password' with a text box. Below these fields are two buttons: a green checkmark button and a red 'STOP' button. On the right, there are four radio buttons for language selection: 'Deutsch DE', 'English EN' (which is selected), 'Français FR', and 'Lëtzeburgesch LU'. Below the radio buttons is a link: 'Connection to the STATEC Web-site'. The right side of the window has a yellow background with the 'statec' logo in blue, 'IDEP/CN8' in red, '(for Windows)' in red, 'Intrastat data entry package' in black, and the 'INTRASTAT' logo in blue. At the bottom of the right side, there is a message: 'Your key to European statistics' followed by 'Our mission is to provide the European Union with a high-quality statistical information service'. There is also a small European Union flag logo in the bottom right corner.

You are now in the Intrastat Data Entry Package.

1. Configure the company and user data

System-Companies, with right mouse button select add.

Important data is

Declarant Identity (this is the Luxembourg VAT number, if the number is OK, it has a green background, otherwise red)

Company name (your company name)

Arrival declaration (for most detail reporting, in our case

“3- Detail return (incl. statistical value))

Export declaration(in our case same as Arrival)

2. Configure declaration-heading
Declaration/Edit, right mouse Add

Add detailed header

Type "1 - Creation of a new return"
Flow "Dispatch"

Period 2001 06

Now you can add manual data (right mouse button), or start importing

Intrastat data entry package - 0000000000 (Baan)

Declaration Actions Tables Parties System Maintenance CN8 Windows Help

Add Declaration lines #1

Number AA000001 Currency indicator LUF
 Period 200106 Flow D - Dispatch
 Last update Last update user idep Threshold 3 - Detailed Return (incl. statist. value)
 Line number 00001

Reference Internal good code

Partner VAT number CN8 goods code

Partner country

Nature of transaction A Currency code Net mass

Transport mode

Invoice value EURO Statistical value EURO

Invoice value LUF Statistical value LUF

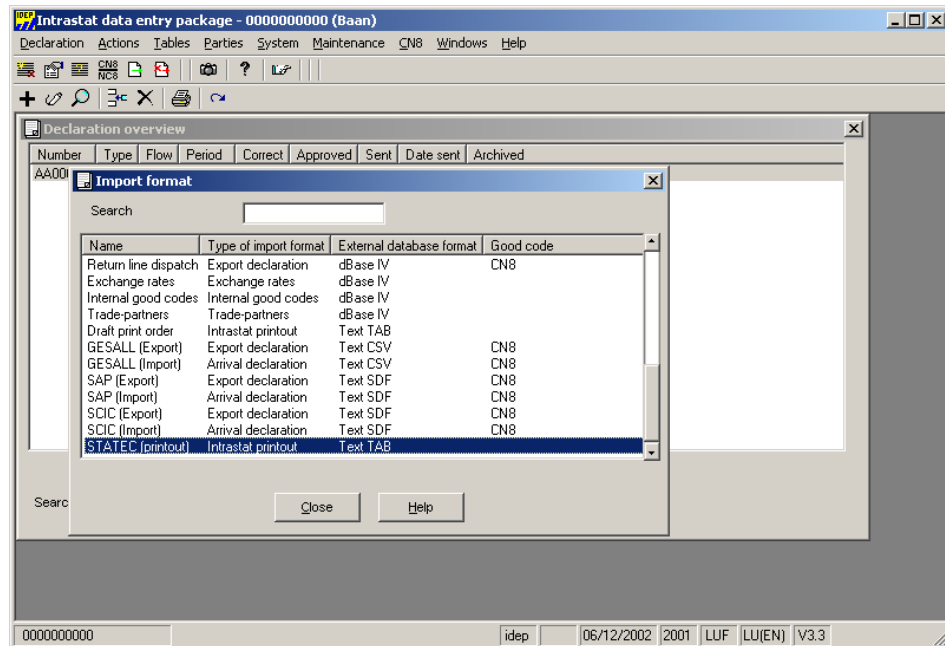
Add Cancel Help

0000000000 idep 17/07/2001 2001 LUF LU(EN) V3.3

Import Data from SSA ERP to IDEP

If you import your data you have to define an import format, which defines the mapping between the SSA ERP columns en IDEP attributes.

Choose “System”, “Formats”



In this example we define an Import format of type Export Declaration

With right mouse button Add.

Fill in the following data:

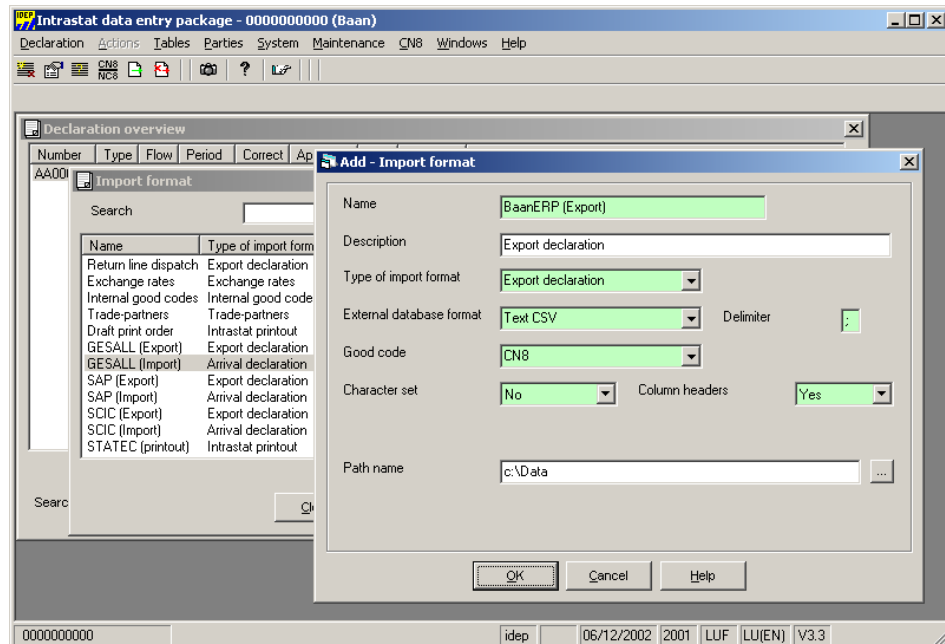
Name: SSA ERP

Type of import format: Export Declaration

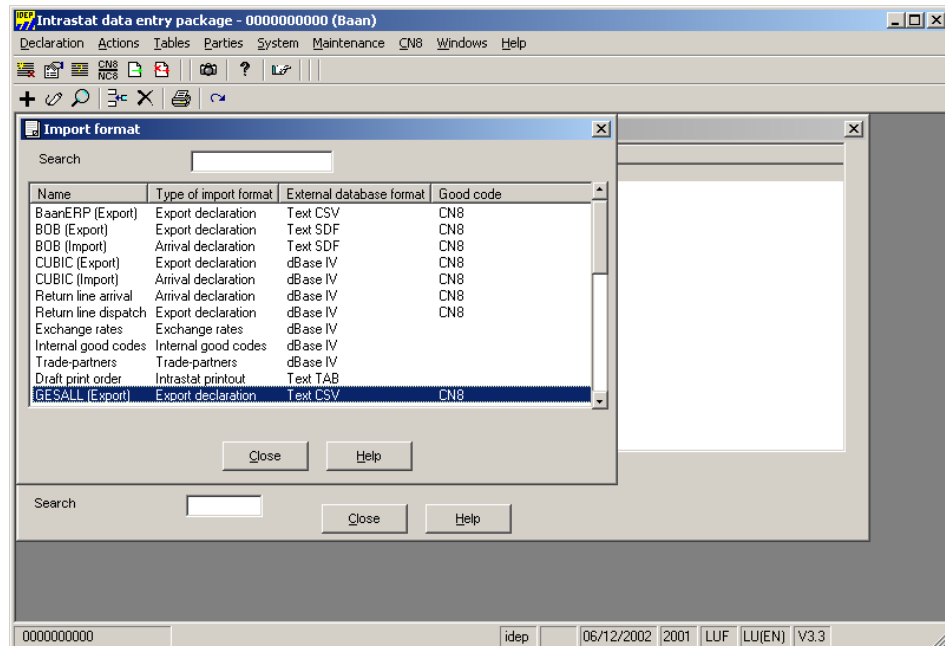
External database format: Text CSV

Good code: CN8 (it is also possible to do the Item to CN8 mapping in IDEP, then choose Company)

Column headers: Yes



A data import format is created with name SSA ERP (Export)



Then define the mapping between the SSA ERP columns en IDEP attributes.

Select "Baan ERP (Export)", right mouse button select Import Format.

First set all “Order” sequence numbers to 0, by “Clear All” button

The field mapping is country specific.

It is possible to make a mapping based on the first (header) line of the simulated CSV file output.

A convenient way to read the file is in Excel, by adding a new row with the COLUMN function in the cells the column number is displayed

Here an example is given for Luxemburg:

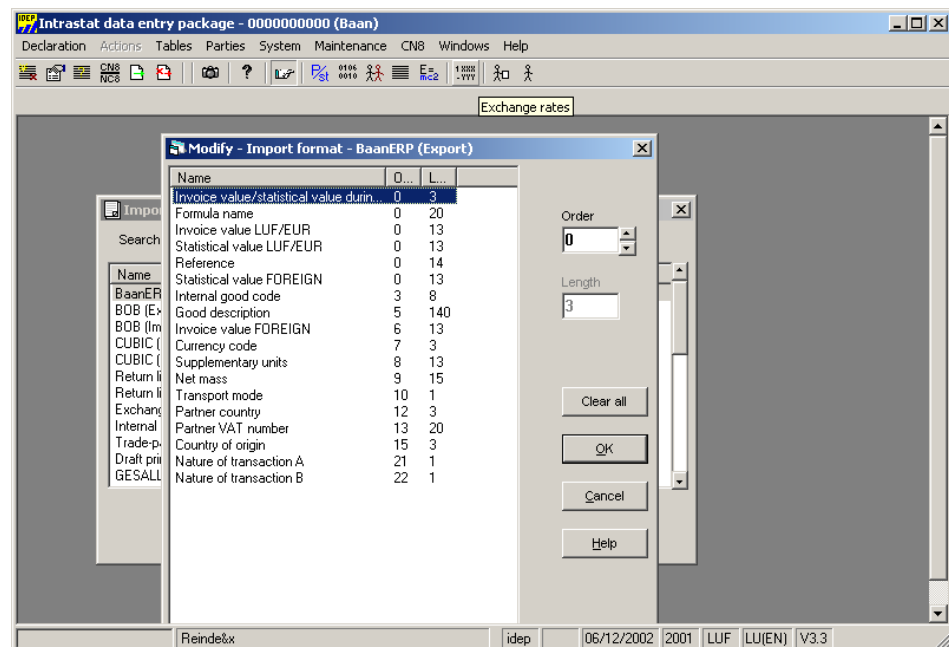
Name	Column position
Internal good code (here it contains CN8)	3
Good Description	5
Invoice Value Foreign (to force conversion to Euro, since in year 2002 the IDEP packages are often configured for import in national currency)	6
Currency Code	7
Supplementary units	8
Nett mass	9
Transport Mode	10
Partner Country	12
Partner Vat number	13
Country of Origin	15
Reference	16
Nature of Transaction A	22
Nature of Transaction B	23

Header information import example:

Name	BaanERP (Import) / BaanERP (Export)
Description	Import declaration / Export declaration
Type of format	Arrival declaration/Export declaration
External database format	Text CSV
Good Code	CN8
Character set	No
Column headers	Yes
Currency indicator	Euro
Pathname	<empty>

The import in IDEP according to the data import format can be done via

Declaration → Edit (Declaration overview)



Add or Modify a Header (via right mouse button)

Import (via right mouse button)