

BaanERP 5.0c

Deployment Guide for Central Deployment of DEM and Baan Windows

A publication of:

Baan Development B.V.
P.O.Box 143
3770 AC Barneveld
The Netherlands

Printed in the Netherlands

© Baan Development B.V. 2001.
All rights reserved.

The information in this document is subject to change without notice. No part of this document may be reproduced, stored or transmitted in any form or by any means, electronic or mechanical, for any purpose, without the express written permission of Baan Development B.V.

Baan Development B.V. assumes no liability for any damages incurred, directly or indirectly, from any errors, omissions or discrepancies between the software and the information contained in this document.

Document Information

Code: U7387B US
Group: User Documentation
Edition: B
Date: May, 2001

Table of contents

1	Introduction	1-1
2	To install the Code Server	2-1
	To install the Code Server by using the install shield	2-1
	<i>To install Baan Windows onto the Code Server</i>	2-1
	<i>To install the Process Viewer on the Code Server</i>	2-2
	To install the Code Server by using the copy method	2-2
	<i>To install Baan Windows on the Code Server</i>	2-2
	<i>Installation of the Process Viewer on the Code Server</i>	2-3
3	Baan Windows (BW) configuration	3-1
	Default user	3-1
	Storage of Baan Windows configuration files (bwc)	3-1
	Policies to disable password and configuration saving	3-2
	<i>To use poledit to disable password and configuration saving</i>	3-3
	<i>To use regedit to disable password and configuration saving</i>	3-5
	<i>To use bwcentral.ini on the Code Server</i>	3-6
	Command line option to specify a user	3-7
	Option for unique registration of OLE automation	3-7
	Help files	3-8
	Log and temporary files	3-9
4	Process Viewer (PV) configuration	4-1
	Code Server settings for PV	4-1
	Baan Server settings for PV	4-2
	Client settings for PV	4-2

About this document

This guide describes the additional options in Baan Windows (BW) and the Process Viewer (PV) to reduce the cost of ownership when deploying Baan client programs such as BW and PV.

The guide is divided into the following chapters.

Chapter 1, “Introduction,” introduces the concept of Central Deployment.

Chapter 2, “To install Code Server,” describes how to install the Code Server.

Chapter 3, “Baan Windows (BW) configuration,” describes the Baan Windows (BW) configuration.

Chapter 4, “Process Viewer (PV) configuration,” describes the Process Viewer (PV) configuration.

1 Introduction

To reduce the cost of ownership when deploying Baan client programs such as Baan Windows (BW) or the Process Viewer (PV), additional installation and configuration options have been added to BW and PV. These options are described and explained in this document.

Central deployment is based on the concept of a Code Server. One or more central servers serve code to the clients. Therefore, there is no longer a need to install Baan programs onto the clients.

2 To install the Code Server

This chapter describes how to install the Code Server. You can use one of the following scenarios to install the Code Server:

- By using the install shield.
- By using the copy method.

The advantage of using the copy method for installing the code server is that no registry adaptations are required on the client machines.

The following sections describe both scenarios.

To install the Code Server by using the install shield

To install the Code Server, the user must run the installation of Baan Windows (BW) and the Process Viewer (PV) on the server itself by using the standard installation procedure.

To install Baan Windows onto the Code Server

- 1 Download the latest Baan Windows version to the Code Server or use an installation CD-ROM.
- 2 Create a directory on the Code Server and adjust the permissions. For example, if you have a disk called E:, the administrator must create a directory called E:\BAAN\BW. The administrator must change the permissions of this directory to read-only to allow the users to use UNC names from their desktop. Another option is to share this directory with the users by creating a Windows NT share. In all cases, the permission of this directory must be read-only for end users.
- 3 Install Baan Windows in the directory created in the previous step.
- 4 Copy the contents of c:\winnt\baan\bin to the bin directory of Baan Windows. For example, if Baan Windows is installed in e:\baan\bw, the content of c:\winnt\baan\bin must be copied to e:\baan\bw\bin.
- 5 Create the necessary Baan Windows configuration files on the server by using BECS or BW.

To install the Process Viewer on the Code Server

- 1 Download the latest Process Viewer version to the Code Server or use an installation CD-ROM. Typically, the latest PV version is located on the BaanERP server in the **\$BSE/pv** directory.
- 2 Create a directory on the Code Server and adjust the permissions. For example, if you have a disk called E:, the administrator must create a directory called E:\BAAN\PV. The administrator must change the permissions of this directory to read-only to allow users to use UNC names from their desktop. Another option is to share this directory with the users by creating a Windows NT share. The permission of this directory must always be read-only for end users.
- 3 Install the Process Viewer in the directory created in the previous step.
- 4 Refer to Chapter 4, “Process Viewer (PV) configuration on the clients”, for specific Code Server options for PV.

To install the Code Server by using the copy method

To install Baan Windows on the Code Server

- 1 Download the latest Baan Windows version to a local desktop or use an installation CD-ROM.
- 2 Install Baan Windows in a directory on the local desktop. For example in c:\baan.
- 3 Create a directory on the Code Server and adjust the permissions. For example, if you have a disk called E:, the administrator must create a directory called E:\BAAN\BW. The administrator must change the permissions of this directory to read-only to allow users to use UNC names from their desktop. Another option is to share this directory with the users by creating a Windows NT share. The permission of this directory must always be read-only for end users.
- 4 Copy the contents from the local c:\baan directory to the remote directory created on the Code Server, for example, e:\baan\bw.
- 5 Copy the contents of the local c:\winnt\baan\bin directory to the remote bin directory of Baan Windows on the Code Server. For example, if BW is installed in e:\baan\bw, the contents of the local c:\winnt\baan\bin directory must be copied to the remote e:\baan\bw\bin directory.
- 6 Create the necessary Baan Windows configuration files on the server by using BECS or BW.

Installation of the Process Viewer on the Code Server

- 1 Download the latest Process Viewer version to a local desktop or use an installation CD-ROM. Typically, the latest PV version is located on the BaanERP server in the \$BSE/pv directory.
- 2 Install the Process Viewer in a directory on the local desktop, for example, in c:\pv.
- 3 Copy the contents of the directory c:\pv\Program to the directory where the BW executables are installed (for example e:\baan\bw\bin). Note that when you are asked whether to overwrite existing files, click **Yes**.
- 4 Copy the contents of the directory c:\pv\Bdml to a new directory under the BW installation directory (for example e:\baan\bw\Bdml).
- 5 Copy the contents of the directory c:\pv\bmp to a new directory under the BW installation directory (for example e:\baan\bw\bmp).
- 6 Refer to Chapter 4, “Process Viewer (PV) configuration”, for specific Code Server options for PV.

3 Baan Windows (BW) configuration

This chapter describes the different Baan Windows configurations. The sections in this chapter also explain the different Baan Windows options.

Default user

Typically, the user name to log on to Baan is saved in the Baan Windows configuration file (.bwc). This option is not valid in a Central Deployment environment, because more users use the same bwc file. Therefore, the user name in the .bwc file must be emptied.

For additional user-friendliness, the default Windows logon name is used when BW is started and no user name is stored in the .bwc file.

Storage of Baan Windows configuration files (bwc)

In a Central Deployment environment, all bwc files can be stored on the central server. When BW is started with the bwc file as argument, the bwc file in the BSE environment of the started BW is used. This is the case when no path for the bwc file is specified, as in the following example:

```
\\server-name\bw\bin\bw.exe baan.bwc
```

To specify a local bwc file:

```
\\server-name\bw\bin\bw.exe c:\baan\baan.bwc
```

When local bwc files are used, people can store personal settings such as user names and passwords.

Policies to disable password and configuration saving

In a number of cases the system administrator may want to disable the user from saving a password into the bwc file, or to prevent him/her from changing or saving the complete bwc file.

Therefore, two Windows policies have been introduced. First, a Machine policy to disable password saving into bwc files for all users on a particular desktop. Secondly, a User policy that prevents a particular user from saving a Baan Windows configuration file to the desktop or a server.

There are three ways to use these policies.

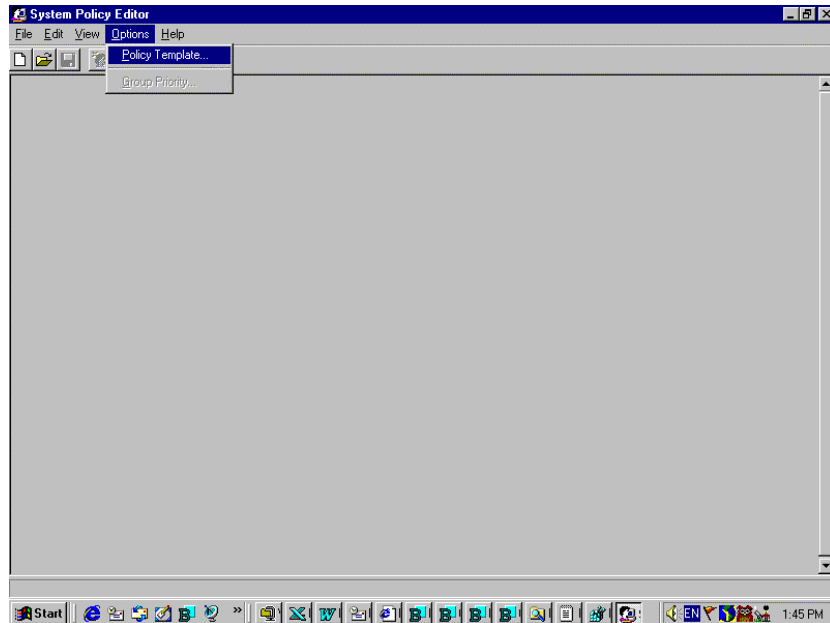
- Through poledit.exe from an NT server (The PDC).
- Through regedit (directly into the registry).
- Through the file `bwcentral.ini`, which is located on the Code Server.

The BW feature (for example, password saving or configuration editing) will be disabled when either the setting by the policy editor, registry key, or the `bwcentral.ini` parameter is set to NO.

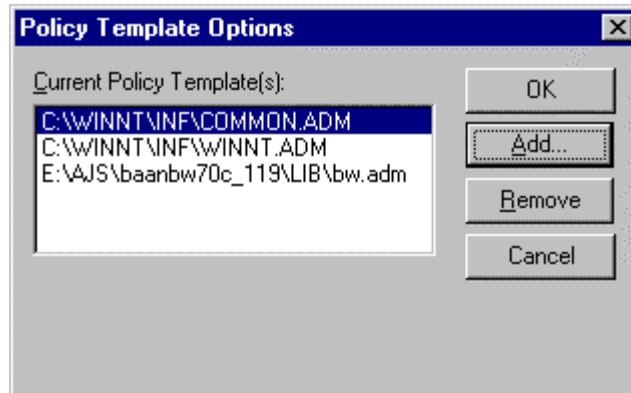
To use poledit to disable password and configuration saving

Poledit is delivered on Windows NT Server machines.

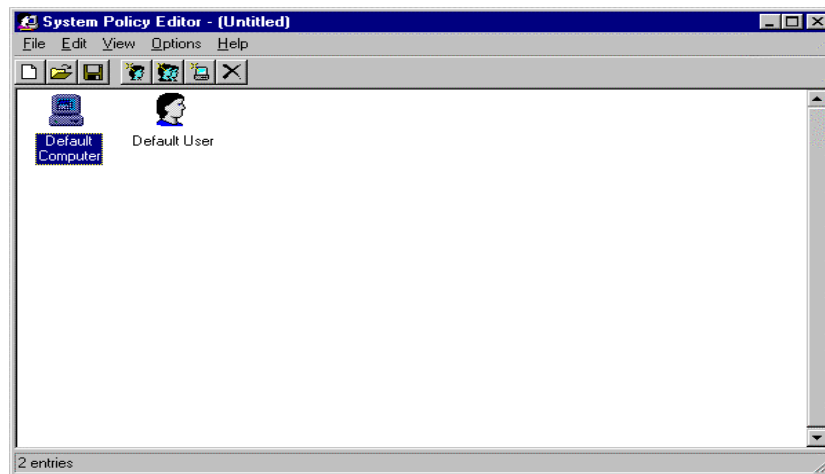
- 1 To use the Baan BW policies, an extra template must be added. To add a template, choose **Policy Template** from the **Options** menu in the **System Policy Editor** dialog box.



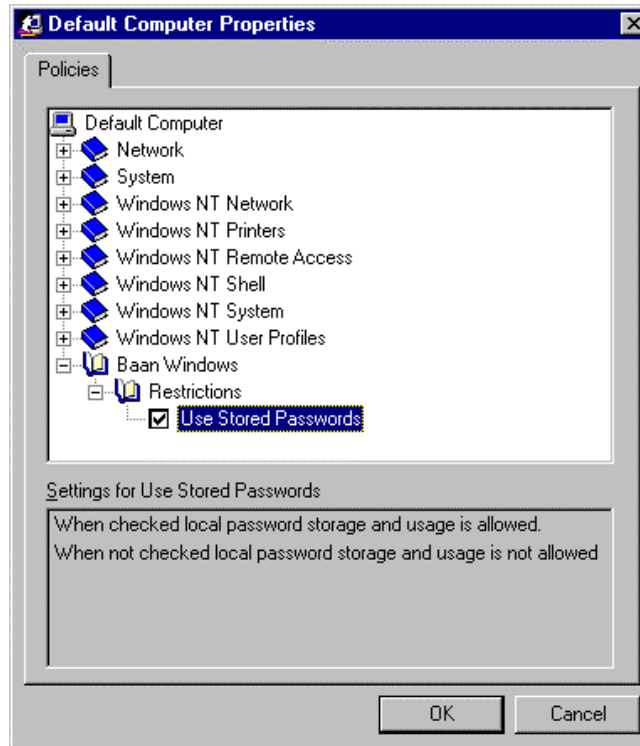
The Baan Windows template is called bw.adm, and is located in the %BSE%\lib directory on the client or the central server. After this template is added, the two policies can be configured.



- 2 After you have added the template, you must click **New**. The following screen appears:



- 3 After you clicked **Default Computer**, you must enable Use Stored Passwords by clicking **Baan Windows => Restrictions => Use Stored Passwords**.



To use regedit to disable password and configuration saving

You can also directly edit the registry to enable/disable the settings for password and configuration saving. The registry key for password disabling is:

HKEY_LOCAL_MACHINE\SOFTWARE\Policies\Baan\bw
 DWORD Value: Option1 (0=no password storage, 1=able to store passwords)

The registry key to disable configuration saving is:

HKEY_CURRENT_USER\SOFTWARE\Policies\Baan\bw
 DWORD Value: Option2 (0=disable configuration save storage, 1=enable configuration save)

To use bwcentral.ini on the Code Server

On the Code Server, the file `bwcentral.ini` can be found in the directory `%BSE%\lib`. Note that this file is only read when BW is started in Central Deployment mode (in other words, when it is not installed locally).

The default contents of this file is the following:

```
[policies]
passwordstorage=yes
configedit=yes
```

When saving passwords in a BW configuration file should be disabled, change the password storage parameter as follows:

```
passwordstorage=no
```

When editing configuration files should be disabled, change the `configedit` parameter as follows:

```
configedit=no
```

Interaction of registry settings and bwcentral.ini

When BW is started in Central Deployment mode, the registry and `bwcentral.ini` file are both read. If a keyword is not present in the `bwcentral.ini` file, the registry setting value will be used. If a registry key value and keyword in `bwcentral.ini` are both used but have conflicting values, the result will be to disable the functionality. So disabling outweighs enabling.

For example -

The following setting is in the client PC registry:

```
HKEY_CURRENT_USER\SOFTWARE\Policies\Baan\bw  DWORD Value: Option2 = 0
(disable configuration saving)
```

whereas the bwcentral.ini file on the Central Deployment server contains:

```
[policies]
configedit=yes
```

since the settings are in conflict, as a result, configuration saving will be disabled.

Command line option to specify a user

There is a new command line option for Baan Windows that overrules the user name of the .bwc file. This option can be called through the **-user** or **/user** option. For example, if BW must start with the user name **test**, the following must be entered:

```
\\server-name\bw\bin\bw.exe -user test baan.bwc
```

The /user option can also be used instead of -user.

Option for unique registration of OLE automation

In some cases, Baan Windows is used by several persons who share a desktop. Each person starts Baan Windows without closing the open Baan Windows sessions, because these belong to another user. All persons also use one .bwc file (for example, when Central Deployment is used). The Baan OLE Automation server will use the .bwc file name in the registry as a unique key. As a result, the OLE automation request will possibly be carried out in the wrong Baan Windows session.

To resolve this a new option **/reg** has been added to create a unique registry entry for OLE Automation. For example, BW must start with the following option:

```
\\server-name\bw\bin\bw.exe /reg baan.bwc
```

Help files

The path to the Help files is usually specified in the User Default template in BaanERP. This Help path can point to a server that uses UNC names.

ttams1110m000 : User Data Template (000)

File Edit View Group Workflow Tools Specific Window Help

System Data Authorizations

Template Code: DEFAULT

Application Server:

Startup System:

Startup System 2:

Windows Help File: baanerp

Path to Help Files: \\srv-nld-tp0\\Applications\\Baan\\Windows\\Baan_help\\B51a

Print Delete Delay Time: 0

Locale: ISO-8859-1

Refresh Interval (sec.): 0

Options:

- ☐ History
- ☒ Session Code in Title

NUM

When no path is specified, the Help on the Central Deployment server is used. However, the **Windows Help File** field must be filled with an existing Help file. For example, when **baanerp** is specified in the **Windows Help File** field, and no path is specified, Baan Windows will look for the Help files on the Central Deployment server under the help\\baanerp directory.

Log and temporary files

In a non-Central Deployment environment, all log and temporary files are logged in the %BSE%\log and %BSE%\tmp directory. In a Central Deployment environment, no registry settings or environment setting to specify the %BSE% are available. As a result, all log and temporary files are written into the %TEMP% directory.

Baan Windows will find the log and temporary files path through:

- Temporary files:
 - Registry (through BSE_TMP).
 - If no registry setting is specified, %TEMP% is used.
- Log files:
 - Registry (BSE_LOG).
 - Registry (If no BSE_LOG is specified in the registry, the log directory will be %BSE%\log).
 - If no registry setting is specified, BW will check the BSE_LOG environment variable.
 - If none of the above are specified, the %TEMP% directory is used.

These settings are valid for BW, PV, and Bwprint.

4 Process Viewer (PV) configuration

Code Server settings for PV

A new file called pv.ini is located in the PV program folder. The system administrator can specify in this file where the Process Viewer can find the bitmaps and standard schemas.

The file layout of pv.ini is as follows:

```
[LocalMachine]
CentralDeployment = 1
Data Folder = %TEMP%
Bdml Folder = \\server-name\PV\Bdml
Bitmap Folder = \\server-name\PV\Bmp
[AppSettings]
VersionChecking = 0
DownloadCategories = 0
DownloadBitmaps = 0
```

When Central Deployment is set to 1, the contents of this file is used instead of the registry settings.

The Data folder is used to temporarily store the user models. When a directory or folder is specified, the user models are written to the specified directory on the desktop.

The BDLM Folder variable must be set with the directory where the default PV models exists. The Code Server must be specified in a Central Deployment environment.

The BMP Folder variable must be set with the directory where the default PV bitmaps exists. The Code Server must be specified in a Central Deployment environment.

For debug purposes, an extra variable exists called DebugMode = 1. When this variable is set, PV will show the path of the user model and the PV arguments.

Baan Server settings for PV

The Process Viewer automatically detects when an old or incomplete version is used. When this is noticed, a screen appears which prompt the user to download the latest version. With a Central Deployment environment, no downloads of the Process Viewer are allowed to the local clients and this option must be disabled.

To disable the download option, you must change the **\$BSE/lib/defaults/ui_resources** file. The **central_deployment:1** variable will disable automatic downloads.

Client settings for PV

The Process Viewer is a separate program and BW is cannot find it. To make the PV path known, a registry entry must be added to the clients.

```
[HKEY_LOCAL_MACHINE\SOFTWARE\Microsoft\Windows\CurrentVersion\App
Paths\PV.EXE]
@="\\\\ser-ver-name\\PV\\Program\\pv.exe"
"Path"=\\\\server-name\\PV\\Program
```

NOTE

This registry key on the clients is not needed when you installed the PV executables in the same directory as the BW executables. Refer to “To install the Code Server by using the copy method” in Chapter 2, “Baan Windows (BW) configuration.”