

BaanERP 5.0b / 5.0c

**Installation Guide for BaanERP 5.0
sp03 Tools patch**

A publication of:

Baan Development B.V.
P.O.Box 143
3770 AC Barneveld
The Netherlands

Printed in the Netherlands

© Baan Development B.V. 2000.
All rights reserved.

The information in this document is subject to change without notice. No part of this document may be reproduced, stored or transmitted in any form or by any means, electronic or mechanical, for any purpose, without the express written permission of Baan Development B.V.

Baan Development B.V. assumes no liability for any damages incurred, directly or indirectly, from any errors, omissions or discrepancies between the software and the information contained in this document.

Document Information

Code: U7531B US
Group: User Documentation
Edition: B
Date: November, 2000

Table of contents

1	To install the post BaanERP5.0c sp03 Tools patch	1-1
	How to copy the CD-ROM contents	1-1
	How to copy the files to an AS400 platform.	1-2
	To import the data dictionary.	1-3

About this document

This document describes how to install a post BaanERP5.0c sp3 tools patch for the tools version 7.1a. The document is intended for system administrators and/or IT managers. You must have knowledge of UNIX, AS400 or Windows NT as well as an elementary understanding of the way Baan software is structured. Basic BaanERP administration skills are required.

This document consists of one chapter:

- Chapter 1, "To install the post BaanERP5.0c sp03 Tools patch", describes how to perform the installation.

1 To install the post BaanERP5.0c sp03 Tools patch

This chapter describes the installation of the BaanERP5.0c sp03 Tools patch. There are two situations in which you must perform this installation.

- 1 You work with BaanERP5.0b and you migrated to Tools version 7.1a Service Pack 3.
- 2 You work with BaanERP5.0c and Tools version 7.1a Service Pack 3.

Before you start the patch installation, you must check if your installation meets the following requirements:

- Version 7.1a tools of Service Pack 3 must be installed.
- The latest porting set of 7.1b or later must be installed. You can obtain information about these portingsets at the Baan Global Support Web site.

How to copy the CD-ROM contents

Take the following steps to copy the contents of the CD-ROM to a Windows NT platform. It is indicated where the process on Unix deviates.

- 1 Log on as user **baan**.

NOTE

If you perform the update on a UNIX platform, you must log on as user **bsp**.

- 2 Copy the contents of the distribution CD-ROM in binary mode to the server where the BaanERP 5.0b/c is located. In this example, the contents are copied to H:\TOOLSCOR3.

NOTE

This example describes an update on Windows NT. If you perform the update on UNIX, you must first run the script **fix_filenames.sh** in the directory **utilities/unix**. You can find this directory under the root directory of the distribution CD-ROM.

To be able to run the **fix_names.sh** script you must first change the file permissions. Change directories to **utilities/unix** and type the following command:

```
# chmod 777 fix_filenames.sh
```

To run the script **fix_filenames.sh** type the following:

```
# utilities/unix/fix_filenames.sh
```

- 3 Copy the contents of the Add_Files directory (the directories include 6.2, sec and mswindows) to (in this example) H:\TOOLSCOR3 to your %BSE% directory.
- 4 Proceed with the next section “To import the data dictionary”.

How to copy the files to an AS400 platform.

- 1 Insert the CD-ROM into a PC. You can not use the CD-ROM drive of the AS/400, because the CD-ROM is joliet format and not ISO9660.
- 2 Copy or transfer the contents of the distribution CD-ROM to the AS/400 server. The exact directory structure must be transferred to the server.

NOTE : If you use ftp for filetransfer to the AS/400, please use the standard ftp command from a so-called “dos box” (command.com or cmd.exe). Use binary mode in ftp to transfer the files to the AS/400 system (the files will get CCSID 819 permissions on the AS/400 server).

NOTE: If you use netserver for filetransfer to the AS/400 server, to map a directory from the AS/400 server to the PC as a network drive, make sure that the CCSID on the “AS/400 netserver properties, tab advanced” is set to 819. If this is not the case, please change it by clicking **next start**, and restart the netserver.

- 3 Log on to the AS/400 server and start the **Qshell**. Copy the contents of the add_files directory to the Baan environment. Type the following command:

```
cp -r /tmp/toolspatchfiles/add_files/* /baanerp/bse
```

- 4 Proceed with the next section “To import the data dictionary”

To import the data dictionary.

The following example describes an installation process on a Windows NT platform with an updated tools version on the BaanERP5.0b environment. It is indicated where the update on UNIX and AS400 deviates from the described installation.

Take the following steps to install the post BaanERP5.0c sp3 patch:

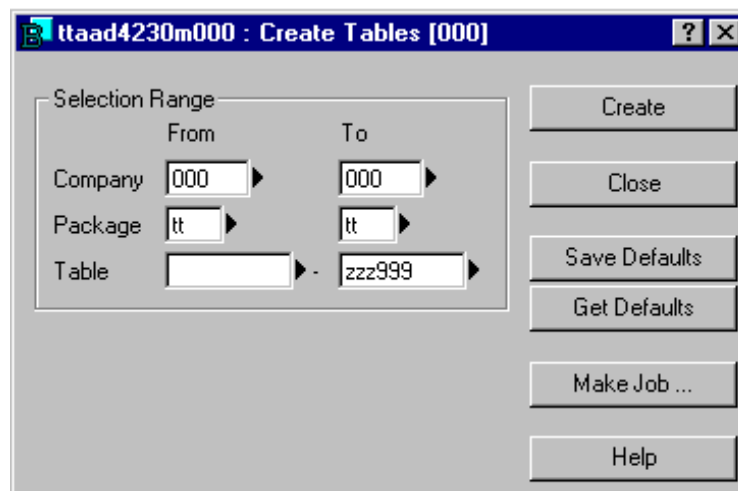
- 1 Start BaanERP. Open the **Import Data Dictionary** (ttiex1285m000) session. Supply the information as indicated in the following figure. Note that the directory H:\toolscor3 is variable and that you select the **Write software components in other Package VRC** checkbox. The **VRC** field must contain the 7.1_a VRC.

- 2 Click **Import** to import the patch. After the import of the patch is completed, you must close the session.
- 3 Start the **Create Runtime Data Dictionary for Tools** (tadv5213m000) session. Click **Create**.

NOTE

You must select the **Also Dump Data Definitions** checkbox.

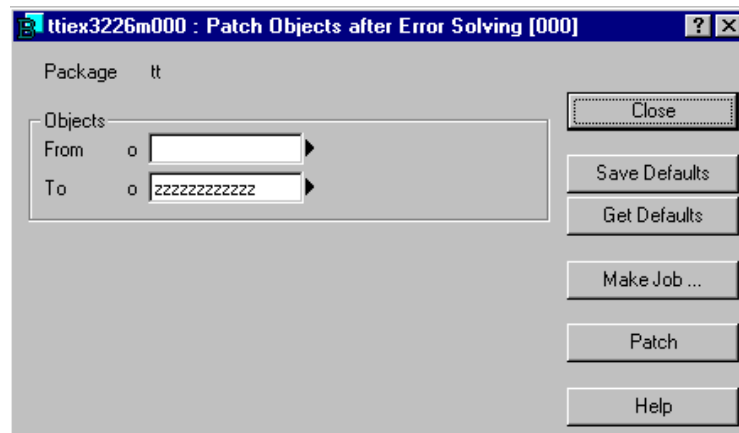
- 4 Close the session and open the Companies (ttaad1100m000) session from the **Companies and Package Combinations** menu. Check which package combination is attached to company 000.
- 5 Select **Run Program** from the **File** menu, and type ttaad2500m000 in the Program/Session field. The **User Data** (ttaad2500m000) session is started. Select user **baan** (or **bsp**) check the package combination. If the user is not attached to the package combination of company 000 you must change the package combination of the user. Click **Save**.
- 6 Reselect user **baan** (or **bsp**) and select **Convert BAAN User to Runtime DD** in the **Specific** menu. Click **Convert**.
- 7 Close the session. To activate the changes close and restart the bshell as user **baan** (or **bsp**).
- 8 Start the **Create Tables** (ttaad4230m000) session. Create all Tools tables for company 000 as shown in the following figure.



NOTE The warning *Company 000 is reserved for Tools Tables* is displayed. You can ignore this warning.

- 9 Click **Create** to create the tables. After the tables are created, you must close the session.

- 10 Complete the update by running the **Patch Objects after Error Solving** (ttiex3226m000) session as shown in the following figure.



- 11 Click **Patch** to complete the update.

