



## **Baan Project - Open Plan Enterprise**

---

### **Small Performance Improvement**

**Solution**

138448

Document information	
Document code	138448
Document group	Maintenance documents
Release	Baan Project - Open Plan Enterprise
Document title	Small Performance Improvement
Document edition	1.0
Status	Published
Month modified	October

Copyright © 2003 by SSA Global Technologies, Inc.

All rights reserved. No part of this publication may be reproduced, stored in a retrieval system, or transmitted in any way or by any means, including, without limitation, photocopying or recording, without the prior written consent of SSA Global Technologies, Inc.

#### Important Notices

The material contained in this publication (including any supplementary information) constitutes and contains confidential and proprietary information of SSA Global Technologies, Inc. By gaining access to the attached, you acknowledge and agree that the material (including any modification, translation or adaptation of the material) and all copyright, trade secrets and all other right, title and interest therein, are the sole property of SSA Global Technologies, Inc. and that you shall not gain right, title or interest in the material (including any modification, translation or adaptation of the material) by virtue of your review thereof other than the non-exclusive right to use the material solely in connection with and the furtherance of your license and use of software made available to your company from SSA Global Technologies, Inc. pursuant to a separate agreement ("Purpose").

In addition, by accessing the enclosed material, you acknowledge and agree that you are required to maintain such material in strict confidence and that your use of such material is limited to the Purpose described above.

Although SSA Global Technologies, Inc. has taken due care to ensure that the material included in this publication is accurate and complete, SSA Global Technologies, Inc. cannot warrant that the information contained in this publication is complete, does not contain typographical or other errors, or will meet your specific requirements. As such, SSA Global Technologies, Inc. does not assume and hereby disclaims all liability, consequential or otherwise, for any loss or damage to any person or entity which is caused by or relates to errors or omissions in this publication (including any supplementary information), whether such errors or omissions result from negligence, accident or any other cause.

## Table of contents

<b>1.</b>	<b>Explanation</b>	<b>4</b>
1.1	Purpose of the document	4
1.2	Functional and technical Explanation	4
1.3	Activation of Performance Improvement	4
1.4	References	5

# 1. Explanation

## 1.1 Purpose of the document

This document describes how to improve performance in the Baan Project - Open Plan Enterprise Integration.

## 1.2 Functional and technical Explanation

As the Baan Project - Open Plan Enterprise Integration makes use of Baan's BCBE<sup>1</sup> technology, a separate Bshell is used for this connection. This Bshell is called "Bshellxma". As this Bshellxma does not require User Interface (UI) Interaction, this can be disabled. By default all UI Interaction is executed. If this is not necessary, it can be disabled, resulting in a small performance improvement.

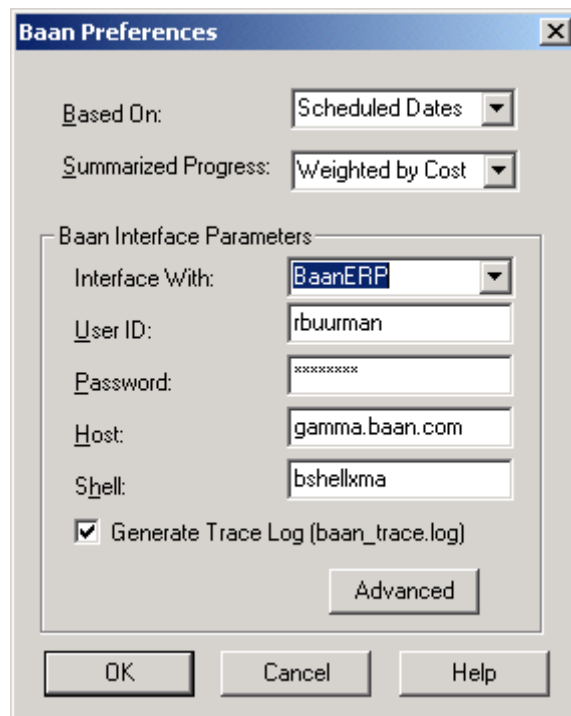
## 1.3 Activation of Performance Improvement

To activate the Performance Improvement, please execute the following steps.

**Step 1:** Start "Open Plan Enterprise".

**Step 2:** Go to "File", "BAAN", Preferences. This screen will show up;

Make sure the correct Baan version is selected; "BaanIV" or "BaanERP"



---

<sup>1</sup> Baan Connection Basic Edition

**Step 3:** Press “Advanced”;

The screenshot shows a dialog box titled "Baan Interface Parameters". It contains four input fields: "Daemon Port" with the value 512, "Baan Environment System Variable" with the value /b50c/bse, "Shell Command Line Argument" with the value -set DISABLE\_DEBUGGER=1 ottmidsleeping, and "Baan Communication Time Out (milliseconds)" with the value 0. At the bottom, there are three buttons: OK, Cancel, and Help.

Currently the “Shell Command Line Argument” textbox shows

“-set DISABLE\_DEBUGGER=1 ottmidsleeping”

Please change this to:

“-set DISABLE\_DEBUGGER=1 -set SPECIAL\_SERVER=UIINDEPENDANT ottmidsleeping”

NOTE: UIINDEPENDANT is written with an “A”, instead of UIINDEPENDENT

Although it is not correct English, the Portingset will look for the variable

“UIINDEPENDANT”.

Press “OK” and on the previous screen also.

**Step 4:** Exit and Restart Open Plan Enterprise.

The new variable should be taken into account by the Integration.

## 1.4 References

Next references are or can be consulted:

Case # 667235 and Solution #: 124491: Performance improvements integration iBaan ERP  
Project - External Scheduling Packages