

BAAN IV

**Conversion BAAN IVb2/IVc to BAAN IVc1
for Windows NT**

A publication of:

Baan Development B.V.
P.O.Box 143
3770 AC Barneveld
The Netherlands

Printed in the Netherlands

© Baan Development B.V. 1997.
All rights reserved.

The information in this document is subject to change without notice. No part of this document may be reproduced, stored or transmitted in any form or by any means, electronic or mechanical, for any purpose, without the express written permission of Baan Development B.V.

Baan Development B.V. assumes no liability for any damages incurred, directly or indirectly, from any errors, omissions or discrepancies between the software and the information contained in this document.

Document Information

Code: U7094A US
Group: User Documentation
Edition: A
Date: January 1998

Table of contents

1	To update INFORMIX 7.20 to INFORMIX 7.23	1.1
	To install I-Connect version 7.23	1.1
	To update the INFORMIX database	1.3
2	To convert the BAAN IVb2 data to BAAN IVc1	2.1
	Prerequisites for the general update	2.1
	Prerequisites for the finance conversion	2.2
	To update BAAN IVb to BAAN IVc1	2.2
	To create the environment for BAAN IVc1	2.4
	To convert the BAAN IVb2 data to BAAN IVc1	2.5
	<i>Running tccov0207m000</i>	2.5
	<i>Running tccov8001m000</i>	2.7
3	To convert the BAAN IVc data to BAAN IVc1	3.1
	Prerequisites	3.1
	To update BAAN IVc to BAAN IVc1	3.1
	To create the environment for BAAN IVc1	3.3

About this book

This document explains how you can convert BAAN IVb2 to BAAN IVc on a Windows NT platform. It also describes how to update INFORMIX Version 7.20 to INFORMIX Version 7.23. If you are running the SQL Server database management system, you can skip this part of the document.

Chapter 1 describes how you can update INFORMIX Version 7.20 to INFORMIX Version 7.23.

Chapter 2 describes the steps how you can convert the BAAN IVb2 data to BAAN IVc1.

Chapter 3 describes the steps how you can convert the BAAN IVc data to BAAN IVc1.

1

To update INFORMIX 7.20 to INFORMIX 7.23

This chapter describes which steps you must take to update INFORMIX version 7.20 to version 7.23. It also describes how you can install the I-Connect version 7.23 product.

To install I-Connect version 7.23

To install the INFORMIX Connect version 7.23 software, take the following steps.

NOTE 1 You must not install INFORMIX Connect while being logged on to the Windows NT Domain Controller. BAAN IV does not support users that are logged on to the Windows NT Domain Controller. Always log on locally to install INFORMIX Connect, and use BAAN IV by logging on as local user only.

NOTE 2 INFORMIX Connect can be installed both from disk and from CD-ROM. The description below assumes that you install it from CD-ROM. In the example installation below D: is used as the device for CD-ROM.

- 1 Insert the INFORMIX-OnLine distribution CD-ROM in its device and log on as a user with administrator rights.

- 2 Open the Explorer and double-click the following file:

D: \Informix\i386\IConnect7.23\WIN32\DISK1\SETUP

NOTE In this example installation an Intel server is used. If you are installing on an Alpha platform you must select D: \Informix\alpha\IConnect\DISK1\SETUP.

- 3 A **Welcome** screen is displayed, explaining the steps to be taken by the installation wizard. Choose **Next**.

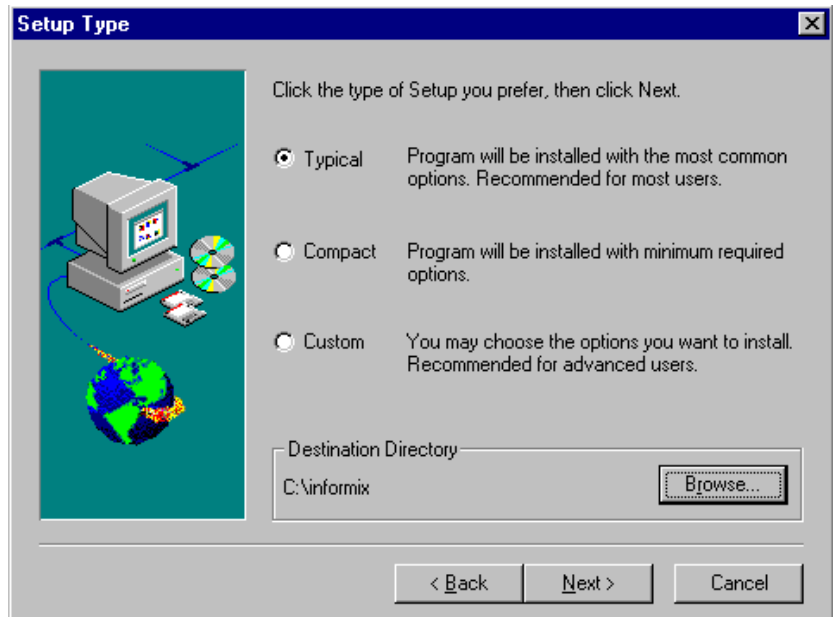
- 4 The **User Information** screen is displayed, asking you to enter your name and company. Enter the data and choose **Next**.

- 5 The **Product Registration** screen is displayed, asking you to enter the serial number and serial-number key. You must enter them exactly as shown on the serial-number key card in your software media box (note that the keys are case-sensitive). Choose **Next**.

- 6 The **Setup Type** screen is displayed, asking you to choose the components you want to install, and to select the directory in which the INFORMIX Connect files are to be installed. For the BAAN IV software you must select the **Typical** setup type. You can either accept the default directory or choose the **Browse** button at the right side of the **Destination Directory** text box to select another directory from the **Choose Directory** dialog box. Choose **Next**.

NOTE

Be sure to use the same directory as you used for the installation of the ODS software.

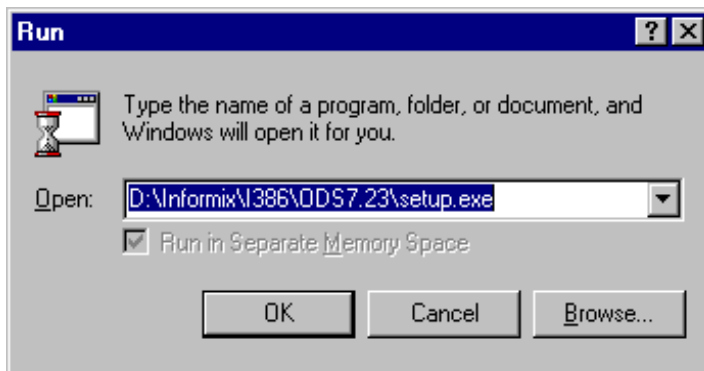


- 7 The **Folder Selection** screen is displayed, asking you to choose the Program Folder for INFORMIX Connect. Select the Program Folder and choose **Next**.
- 8 The **Start Copying Files** screen is displayed. Choose **Next**.
- 9 Two screens are displayed, informing you that certain read only files are detected. Choose **No** twice to continue.
- 10 After the files have been copied, the **Setup Complete** screen is displayed. Choose **Finish** to complete setup.

To update the INFORMIX database

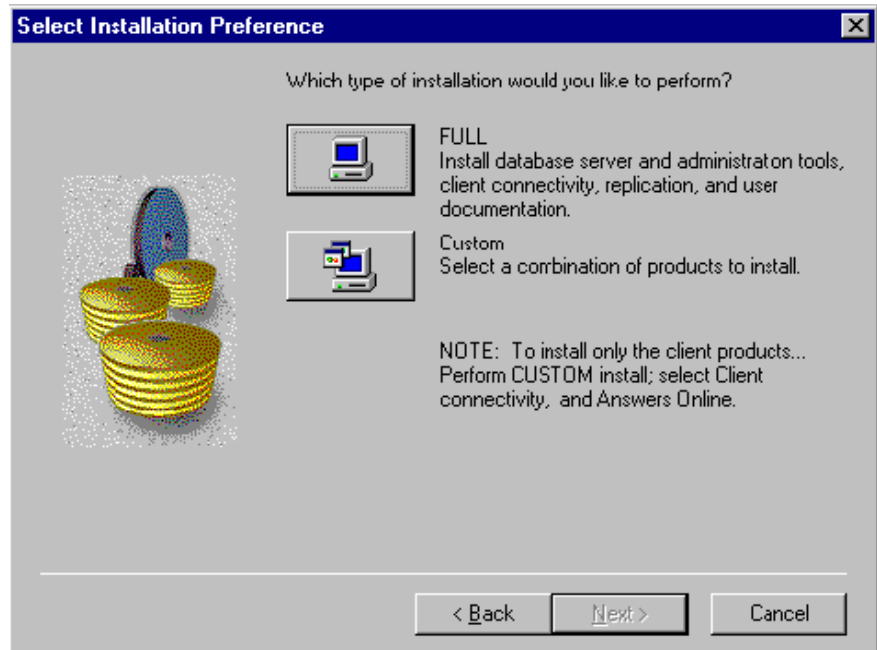
To do the update, follow the steps described below.

- NOTE 1** Before you start updating INFORMIX, you must shutdown BAAN IVb2.
- NOTE 2** You must not update INFORMIX OnLine while being logged on to the Windows NT Domain Controller. BAAN IV does not support users that are logged on to the Windows NT Domain Controller. Always log on locally to update INFORMIX-OnLine and use BAAN IV by logging on as local user only.
- NOTE3** INFORMIX-OnLine can be updated both from disk and from CD-ROM. The description below assumes that you install it from CD-ROM. In the example installation below D: is used as the device for CD-ROM.
- 1 Insert the INFORMIX-OnLine distribution (version 7.23) CD-ROM in its device and log on as a user with administrator rights.
 - 2 Press the **Start** button and select **Run**. Supply the path as displayed in the screen below (in this example D: is the drive for the CD-ROM):

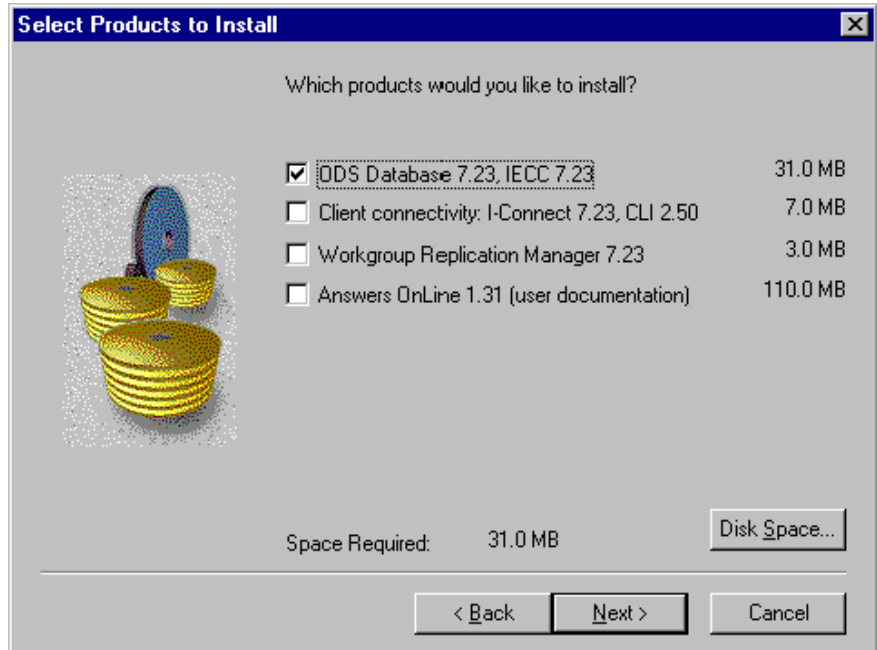


- NOTE** In this example installation an Intel server is used. If you are installing on an Alpha platform you must select D: \Informix\alpha\ODS\ Setup.exe.
- 3 A Welcome screen is displayed, giving you information about the INFORMIX-OnLine Dynamic Server setup program. Choose **OK** to continue.

- 4 The **Select Installation Preference** screen is displayed, asking you which type of installation you want to perform.

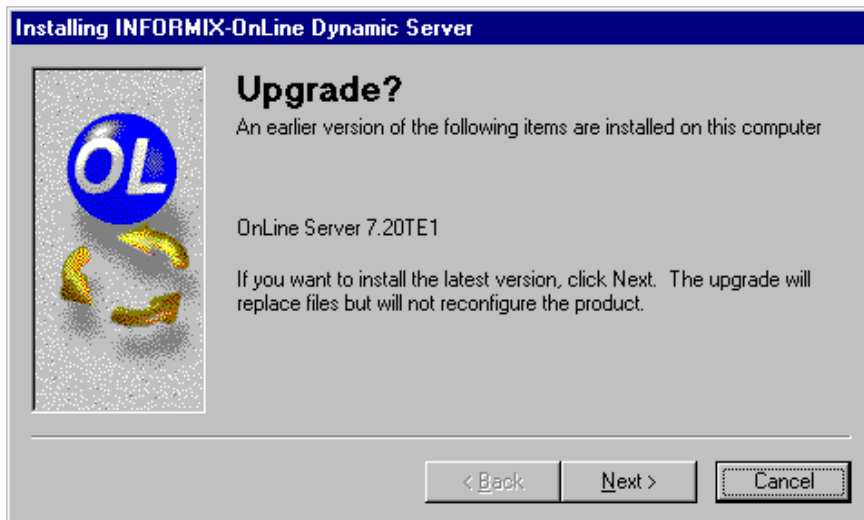


- 5 Select **Custom**, and choose **Next**. The **Select Products to Install** screen is displayed, asking you which products you want to install.



- 6 Select the **ODS Database 7.23, IECC 7.23** check box only, and choose **Next** to continue. A screen is displayed, telling you that the installation of the ODS Database 7.23 is started.

- 7 Choose **Next**. The following screen is displayed, telling you that an existing INFORMIX installation is detected. Choose **Next** to continue the update.



- 8 A **Welcome** screen is displayed, explaining the steps to be taken by the installation wizard. Choose **Next** to continue.



- 9 The **System Administration** screen is displayed, asking you to supply the password of the **informix** account. Type the password and choose **Next**.

Installing INFORMIX-OnLine Dynamic Server

System Administration

The informix user account already exists. Please enter the password for the informix account.

User Name: informix

Password:

< Back Next > Cancel

- 10 The **Copy Installation Files** screen is displayed. Choose **Finish** to continue.

Installing INFORMIX-OnLine Dynamic Server

Copy Installation Files

Click Finish to start copying the installation files to the directory where the previous version of the product was installed.

The installation of OnLine is performed in the following order:

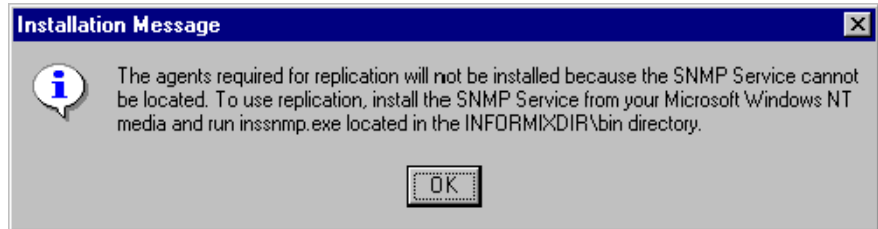
- 1) Supply customer data and select the installation options
- 2) **Copy files**

< Back Finish Cancel

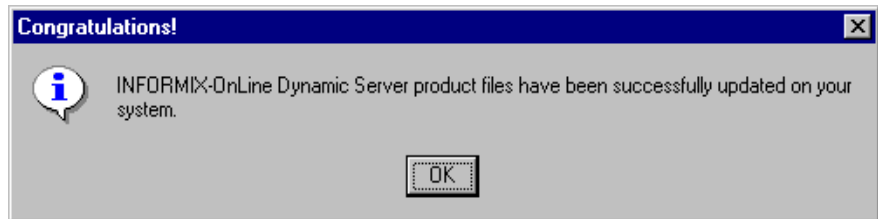
NOTE

If your system has not been set up as a SNMP agent, an error message is displayed. Ignore this message and choose **OK**.

- 11 If there is no SNMP service configured the following message screen is displayed. Choose **OK**.



- 12 After the update is finished, the following message is displayed by the installation wizard. Choose **OK** to leave the installation wizard.



2

To convert the BAAN IVb2 data to BAAN IVc1

This chapter describes how to convert the BAAN IVb2 to BAAN IVc, and contains the following sections:

- Prerequisites for the general update
- Prerequisites for the finance conversion
- To update BAAN IVb to BAAN IVc1
- To convert the BAAN IVb2 data to BAAN IVc1

Prerequisites for the general update

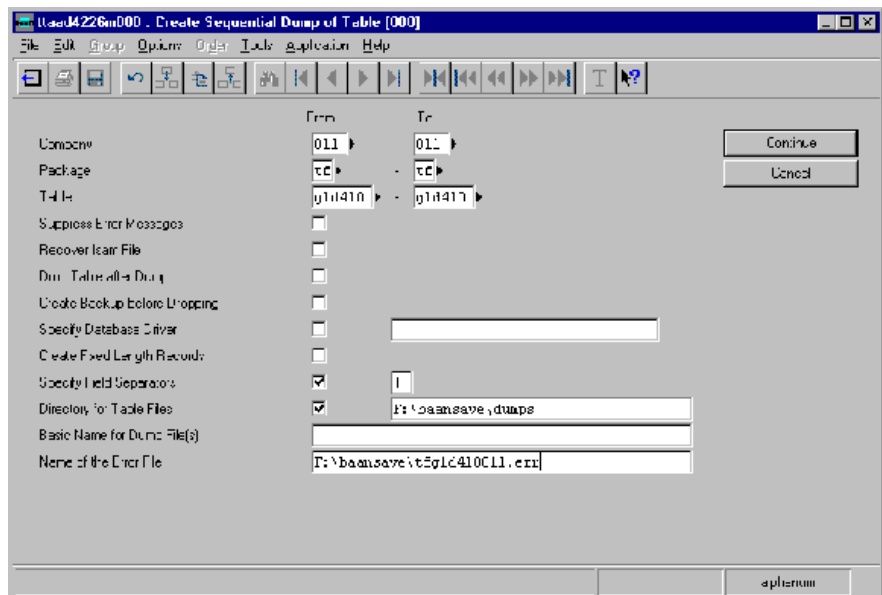
Before you start converting the the BAAN IVb2 data to BAAN IVc1, you must note the following points:

- If you are running the INFORMIX database management system (note that you must only do so if you use an INFORMIX version 7.22 or earlier), do **not** define these variables if you use INFORMIX version 7.23, you must define the following variables by selecting the **Control Panel** from the **Settings** menu, and by selecting the **Environment** tab from the **System** entry:
 - OPTMSG = 0
 - OPTOFC = 1
 - FETARRSIZE = 0
- The DEM models (Dynamic Enterprise Models) must be exported in the BAAN IVb version by running the tgbrg1235m000 session. In the BAAN IVc1 version these models must be imported by using the tgbrg1245m000 session.
- If you are running the INFORMIX database management system, you must have at least 1 GB of free disk space (at least 200 MB for the new **bse** environment, and an additional 700 MB for the BAAN data). The 700 MB for the BAAN data is the minimal amount of free disk space for an initial installation, you are recommended to have 1 GB of free disk space for the dbspace for the BAAN data.
- Be aware of the alignment in both environments.

Prerequisites for the finance conversion

Before you start the conversion, you must note the following BAAN Finance-related points:

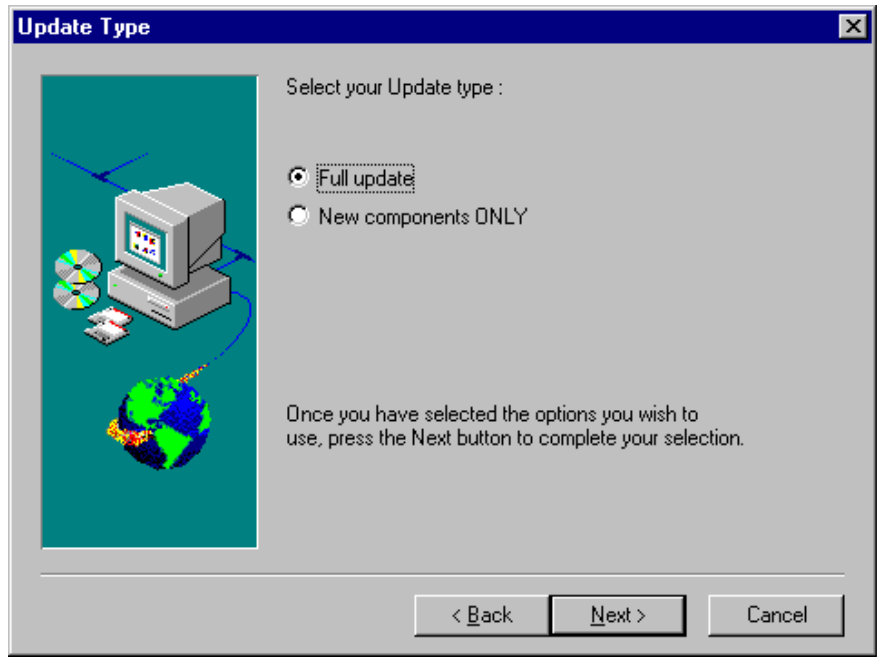
- You must post all integration transactions by using the Post Integration Transactions to Finance Transactions (tfgld4201m000) session. Table **tfgld416** can not contain any data.
- If you want to keep the data for the packages Project, Service, and Transport, you must make a sequential dump of tfgld410 in the BAAN IVb environment by using the session Create Sequential Dump of Table (ttaad4226m000), as shown in the screen below. Note that you must use the pipe symbol ('|') as field separator.



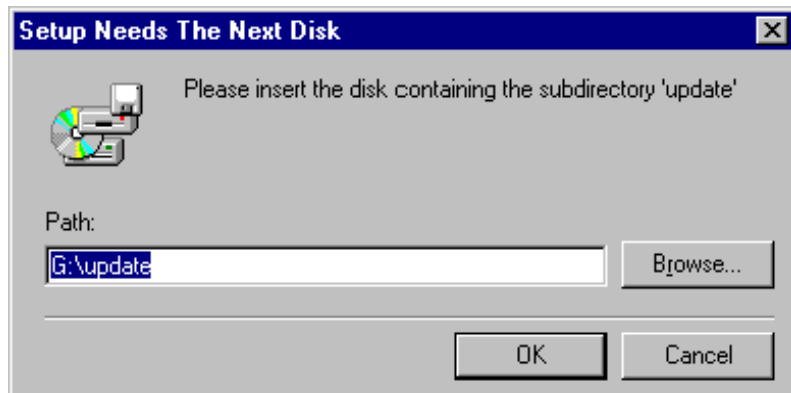
To update BAAN IVb to BAAN IVc1

- 1 Be sure to be logged on as user **baan**, close all running applications, and insert the BAAN IVc1 distribution CD-ROM in the CD-ROM drive.
- 2 The BAAN IV setup begins automatically.

- 3 Select the **Full Update** option, and choose **Next** to start the update.



- 4 Insert the BAAN IVc1 update CD-ROM when the following message is displayed.



- 5 After the BAAN software is updated, you must validate the software by running the Configure Application (ttix3225m000) session.

To create the environment for BAAN IVc1

Take the following steps to create the new environment for BAAN IVc1.

- 1 Log on as user **bsp**, and create the O-VRCs for BAAN IVc1 by using the Maintain Package VRCs (ttadv1111m000) session, and in addition make the derivation to the c1 VRCs. Note that it is not necessary to derive standard c-VRCs from standard b-VRCs.
- 2 Run the Maintain Directories (ttadv1115m000) session for the newly created VRCs.
- 3 Run the Copy Software Components to New Package VRC (ttadv6265m000) session to copy customizations from the BAAN IVb VRCs to the BAAN IVc1 VRCs. This session has only to be run if there are own developments (mostly menus, forms, or reports).

NOTE

Customizations may need to be adapted to the BAAN IVc1 release.

- 4 Run the Maintain Package Combinations (ttaad1120m000) session to create a new Package Combination for BAAN IVc1.
- 5 Run the Maintain Packages by Package Combination (ttaad1221m000) session to fill the new Package Combination with the VRCs created in step 1. Dump the package combination before leaving this session.
- 6 Run the Change Package Combination by Company (ttaad1101m000) session to migrate the BAAN IVb2 companies to the BAAN IVc1 environment.
- 7 Run the Create Tables (ttaad4230m000) session to create the tables for all companies.

To convert the BAAN IVb2 data to BAAN IVc1

You are now ready to convert the BAAN IVb2 table format to the BAAN IVc1 table format. Note that conversion programs will only effect the current company. So, you must be sure that your current company is the actual company that must be converted. The following conversion programs are described:

- **tccov0207m000**

Because records must be shifted from **tfgld410** to **tfgld417**, you must run an additional conversion session **tccov0207m000** to convert this data of BAAN Finance. Start this session by using the **Run Program** option in the GUI environment or by entering P in the menu in an ASCII environment. If Project/Service/Transport Data must be stored, first make the table dump before you run the actual conversion to BAAN IVc1. After the installation of the table definitions of BAAN IVc1 the Project/Service/Transport elements are deleted from **tfgld410**. If this data need not be stored, you can make the table dump after the installation of BAAN IVc1.

If logical table links are established for the tables **tfgld410**, you must also establish a logical table link for the tables **tfgld417**, **tfgld418**, and **tfgld419**. This must be done before conversion can take place. Table links are entered in the Maintain Logical Tables (**ttad4120m000**) session. An additional prerequisite is that the table **tfgld416** must be empty.

The tables **tfgld417**, **tfgld418** (which is the header table for **tfgld410** and **tfgld417**), and **tfgld419**, if necessary, are filled based on this dump. If no dump is created, **tfgld417** and **tfgld419** are filled based on **tfgld410**. So, if no Project/Service/Transport data needs to be stored, it is not necessary to make a dump. In this case data can just be taken from **tfgld410**.

- **tccov8001m000**

This conversion program is made to the Global Localization (GLO) from BAAN IVb to BAAN IVc.

Running tccov0207m000

The tccov0207m000 session can be run in the following two ways:

- The sequential dump method
You must follow this method if you made a sequential dump of tfgld410 in the BAAN IVb environment, and if you want to store Project/Service/Transport data.

- Direct method

You must follow this method if you did not make a sequential dump of tfgld410 in the BAAN IVb environment. Note that the Project/Service/Transport data is not stored.

The sequential dump method

Take the following steps to run the tccov0207m000 session.

- 1 Before you run tccov0207m000, you must empty the following tables by using the General Table Maintenance (ttaad4100m000) session:
 - tfgld410
 - tfgld417
 - tfgld418
 - tfgld419
- 2 Run tccov0207m000, and supply the information shown below (in the example below F:\baan\dumps\ttfgld410653.S is the path of the dump made in BAAN IVb).

The screenshot shows a Windows-style dialog box titled "tccov0207m000 : Fill tfgld417 and tfgld418 based on tfgld410 [573]". The dialog has a menu bar with "File", "Edit", "Group", "Workflow", "Options", "Order", "Tools", "Application", and "Help". Below the menu is a toolbar with various icons for file operations and navigation. The main area contains several settings:

- "Fill all Tables from Dump" with a dropdown menu set to "Yes".
- "Fill 417 and 418 from tfgld410" with a dropdown menu set to "No".
- "Fill Project/Transport/Service" with a dropdown menu set to "Yes".
- "Sequential File (With Path)" with a text field containing "F:\baan\dumps\ttfgld410653.S".
- "Field Separator" with a text field containing "|".

On the right side of the dialog are two buttons: "Continue" and "Cancel". At the bottom, there is a "Processing Progress" section with labels for "Original Company", "Transaction Origin", and "Financial Transaction", each followed by a field containing "000". In the bottom right corner, there is a small field containing the text "alphanumeric".

Direct method

You must follow the direct method only if you did not make a sequential dump of tfgld410 in the BAAN IVb environment. If you do not want to reuse the Project, Transport, and Service data, run tccov0207m000, and supply the information shown below.

tccov0207m000 : Fill tfgld417 and tfgld418 based on tfgld410 [573]

File Edit Group Workflow Options Order Tools Application Help

Fill all Tables from Dump No

Fill 417 and 418 from tfgld410 Yes

Fill Project/Transport/Service No

Sequential File (With Path)

Field Separator

Continue

Cancel

Processing Progress

Original Company 000

Transaction Origin

Financial Transaction

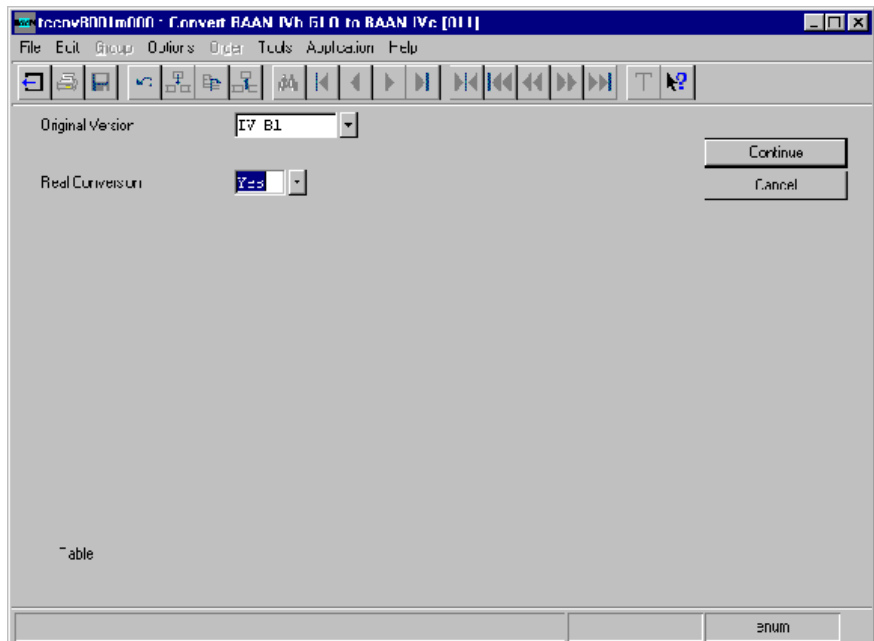
Running tccov8001m000

This section describes how to convert the Global Localization (GLO) from BAAN IVb to BAAN IVc1. In BAAN IVc1 the Convert BAAN IVb GLO to BAAN IVc(tccov8001m000) session is built to handle the following GLO issues:

- GLO to Standard merge
For BAAN IVc, GLO was merged to standard. Several tables were renamed for standards reasons. As a result, all GLO tables in the 900 series have been converted to standard BAAN IV tables. This conversion program will fill the new tables with the existing data from the old tables.

Data to be converted by tccov8001m000

Use the Convert BAAN IVb GLO to BAAN IVc (tccov8001m000) session to make the conversion from BAAN IVb to BAAN IVc1.



NOTE

Select **IV B1** in the field Original Version if your current version of the BAAN software is IVb2, IVb3, or a higher IVb level.

Use this session to convert the following data:

- API Parameters
- Select Tax Jurisdiction/Temporary File (only applicable if you are converting from BAAN IV.x)
- Supplier's 1099 Details
- Buyer's 1099 Details
- Product Category
- Product Category Tax Matrix
- Country Tax Provider Register
- Tax Codes by Postal Code
- Tax Authority Codes
- Exemptions for Taxes – Sales
- Exemptions by Tax Location
- Tax Authority Groups
- Reasons for Tax Exemptions
- Tax Exemption by Customer by Tax Authority
- States
- Exemptions for Taxes – Purchase
- Purchase Order Headers
- Sales Order Headers
- Miscellaneous Payments 1099
- Reason Codes for 1099
- 1099 Interim Table
- Tax Accounts for Standing Orders
- Import Batch Header Data
- Import Document Header Data
- Import Document Line Data

After you convert the data, you can remove the GLO tables shown in the table below:

Baan IVc GLO Table Name	Description
api936	API Parameters
com900	Select Tax Jurisdiction/Temporary File
com936	Supplier's 1099 Details
com937	Payer's 1099 Details
com938	Product Category
com939	Product Category Tax Matrix
com940	Country Tax Provider Register
mcs936	Tax Codes by Postal Code
mcs937	Tax Authority Codes
mcs938	Exceptions for Taxes - Sales
mcs939	Exceptions by Tax Location
mcs940	Tax Authority Groups
mcs941	Reasons for Tax Exemptions
mcs942	Tax Exemptions for Customer by Tax Authority
mcs943	States
mcs946	Exceptions for Taxes - Purchase
cmg936	Miscellaneous Payments 1099
cmg937	Reason Codes for 1099
cmg938	1099 Interim Table
cmg939	Tax Accounts for Standing Orders
gld936	Import Batch Header Data
gld938	Import Document Header Data
gld940	Import Document Line Data

3

To convert the BAAN IVc data to BAAN IVc1

This chapter describes how you can convert the BAAN IVc to BAAN IVc1, and contains the following sections:

- Prerequisites
- To update BAAN IVc to BAAN IVc1
- To create the environment for BAAN IVc1

Prerequisites

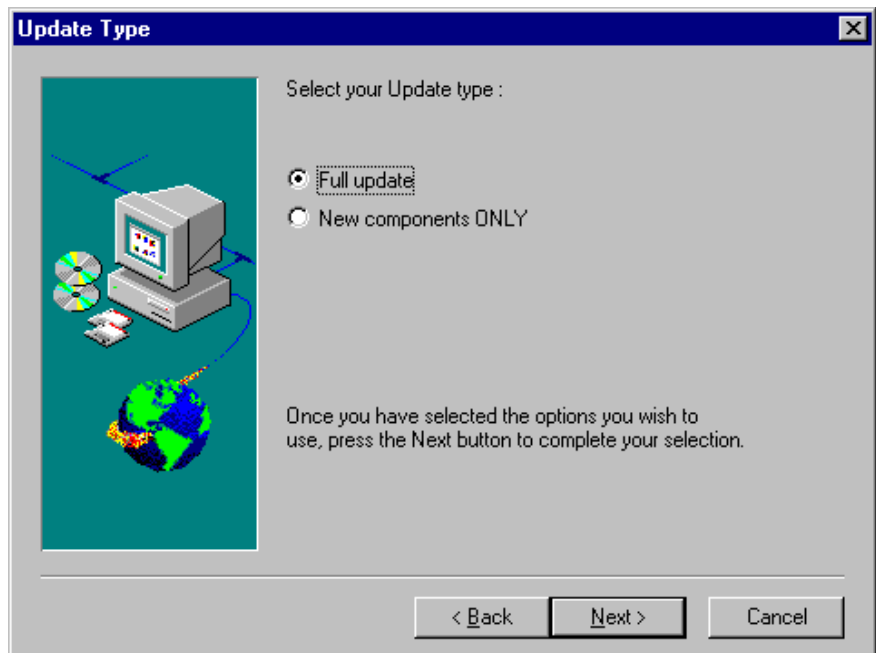
Before you start converting the BAAN IVc data to BAAN IVc1, you must note the following points:

- If you are running the INFORMIX database management system (you must only do so if you use an INFORMIX version 7.22 or earlier; do **not** define these variables if you use INFORMIX version 7.23), you must define the following variables by selecting the **Control Panel** from the **Settings** menu, and by selecting the **Environment** tab from the **System** entry:
 - OPTMSG = 0
 - OPTOFC = 1
 - FETARRSIZE = 0
- If you are running the INFORMIX database management system, you must have at least 1 GB of free disk space (at least 200 MB for the new **bse** environment, and an additional 700 MB for the BAAN data). The 700 MB for the BAAN data is the minimal amount of free disk space for an initial installation. At least 1 GB of free disk space for the dbspace for the BAAN data is recommended.

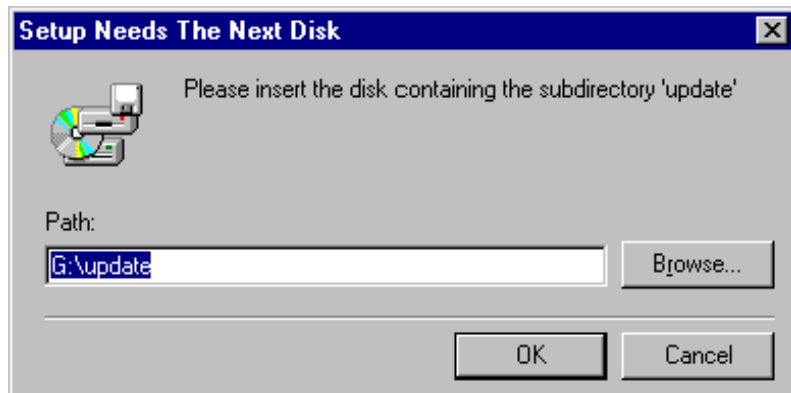
To update BAAN IVc to BAAN IVc1

- 1 Be sure to be logged on as user **baan**, close all running applications, and insert the BAAN IVc1 start-up CD-ROM in the CD-ROM drive.
- 2 The BAAN IV setup begins automatically.

- 3 Select the **Full Update** option, and choose **Next** to start the update.



- 4 Insert the BAAN IVc1 update CD-ROM when the following message is displayed.



- 5 After the BAAN software is updated, you must validate the software by running the Configure Application (ttix3225m000) session.

To create the environment for BAAN IVc1

- 1 Log on as user **bsp**, and create the O-VRCs for BAAN IVc1 by using the Maintain Package VRCs (ttadv1111m000) session, and in addition make the derivation to the standard c1 VRCs.
- 2 Run the Maintain Directories (ttadv1115m000) session for the newly created VRCs.
- 3 Run the Copy Software Components to New Package VRC (ttadv6265m000) session to copy customizations from the BAAN IVc VRCs to the BAAN IVc1 VRCs. This session has only to be run if there are own developments (mostly menus, forms, or reports).
- 4 Run the Maintain Package Combinations (ttaad1120m000) session to create a new Package Combination for BAAN IVc1.
- 5 Run the Maintain Packages by Package Combination (ttaad1221m000) session to fill the new Package Combination with the VRCs created in step 1. Dump the package combination before leaving this session.
- 6 Run the Change Package Combination by Company (ttaad1101m000) session to migrate the BAAN IVc companies to the BAAN IVc environment.
- 7 Create the tables for all companies by running the Create Tables (ttaad4230m000) session.

