



forward faster

▶▶ SSA® Enterprise Server 7

Technical Notes

Copyright © 2004 by Baan International B.V., a subsidiary of SSA Global Technologies, Inc.

All rights reserved. No part of this publication may be reproduced, stored in a retrieval system, or transmitted in any way or by any means, including, without limitation, photocopying or recording, without the prior written consent of Baan™ International B.V.

Important Notices

The material contained in this publication (including any supplementary information) constitutes and contains confidential and proprietary information of Baan International B.V.

By gaining access to the attached, you acknowledge and agree that the material (including any modification, translation or adaptation of the material) and all copyright, trade secrets and all other right, title and interest therein, are the sole property of Baan International and that you shall not gain right, title or interest in the material (including any modification, translation or adaptation of the material) by virtue of your review thereof other than the non-exclusive right to use the material solely in connection with and the furtherance of your license and use of software made available to your company from Baan International pursuant to a separate agreement ("Purpose").

In addition, by accessing the enclosed material, you acknowledge and agree that you are required to maintain such material in strict confidence and that your use of such material is limited to the Purpose described above.

Although Baan International has taken due care to ensure that the material included in this publication is accurate and complete, Baan International cannot warrant that the information contained in this publication is complete, does not contain typographical or other errors, or will meet your specific requirements. As such, Baan International does not assume and hereby disclaims all liability, consequential or otherwise, for any loss or damage to any person or entity which is caused by or relates to errors or omissions in this publication (including any supplementary information), whether such errors or omissions result from negligence, accident or any other cause.

Baan International B.V., is a wholly owned subsidiary of SSA® Global Technologies™, Inc.

Trademark Acknowledgments

SSA Global, SSA and the SSA Global logo are trademarks of SSA Global Technologies, Inc. in the United States and/or other countries. Baan is a trademark of Baan International B.V., in the United States and/or other countries.

All other company, product, trade or service names referenced may be registered trademarks or trademarks of their respective owners.

Publication Information

Document code	: U8333C US
Release	: SSA® Enterprise Server 7
Document title	: Technical Notes
Publication date	: September 04

Table of Contents

Chapter 1	Platform notes	1-1
	End-of-Service notifications.....	1-1
	HP PA-RISC HPUX.....	1-1
	Java 1.4 support	1-2
	IBM Power_PC AIX	1-2
	DB2 UDB	1-2
	Java 1.4 support.....	1-2
	Microsoft x86 Windows.....	1-3
	Java support	1-3
	Sun Sparc Solaris.....	1-3
	Java 1.4 support.....	1-3
	Java support	1-4
Chapter 2	Technical notes SSA Enterprise Server	2-1
	Shared memory default size too low	2-1
	Financial Statements and integration with Crystal Enterprise	2-1
	“Send To” in context menu does not work	2-2
	Audit Trail security	2-2
Chapter 3	Technical notes SSA Enterprise Studio	3-1
	Change in licensing strategy	3-1

Chapter 4	Technical notes SSA ERP LN new installation	4-1
	Install SSA ES 7.6 tools update with SSA ERP LN	4-1
	Error messages in log file with unexpected company number	4-2
	Installation demo company 090 on Informix.....	4-2
	DB2v5 installation exceeds shm_max_dd_cache_size	4-2
	Messages from bdbpost during installation on Informix.....	4-2
	Installation with Oracle: Table space issues	4-3
	Log messages that can be ignored	4-3
	Company number in SSA Installation Wizard	4-3
	Cancelling the installation.....	4-3
	Using Staging Area.....	4-4
	For ASM and SLM only: directory names in lower case [Unix only]	4-4
	Corrective actions in case a name is given in uppercase.	4-5
	Failure during the installation of ASM or SLM.....	4-6
	Post installation steps.....	4-7
	Startup menu after installation.....	4-7
Chapter 5	Technical notes SSA ERP LN upgrade installation	5-1
	Tools upgrade, solution 146454	5-2
Appendix A	Installing demo company 090 with DEM	A-1
	Installation of the demo data	A-1
	Import version data with ESM.	A-2
	Import component data.....	A-4
	Fill in the DEM parameters.	A-5
	Import DEM version dump IMD.	A-6

About this Guide

This document provides Technical Notes to inform you about the SSA Enterprise Server 7

This document contains the following chapters:

- Chapter 1, "Platform notes" provides information about the supported database en operating system versions for SSA Enterprise Server 7
- Chapter 2, "Technical Notes SSA Enterprise Server," describes some points of attention with regards to this version of SSA Enterprise Server.
- Chapter 3, "Technical Notes SSA Enterprise Studio," describes some points of attention with regards to this version of SSA Enterprise Server.
- Chapter 4, "Technical Notes SSA ERP LN 6.1 new Installation," describes the points of attention for the SSA ERP LN 6.1 new Installation.
- Chapter 5, "Technical Notes SSA ERP LN 6.1 upgrade Installation," describes the points of attention for installing the latest tools patch in an existing SSA ERP LN 6.1 environment.
- Appendix A, "Installing demo company 090 with DEM," describes the process to manually install demo company 090.

Send us your comments

We continually review and improve our documentation. Any remarks/requests for information concerning this document or topic are appreciated. Please e-mail your comments to kd@baan.com.

In your e-mail, refer to the document number and title. More specific information will enable us to process feedback efficiently.

The in these notes mentioned support is restricted by the support provided by the actual vendor.

Example:

SSA Global provides support for Microsoft Windows 2000 on this portingset as long as Microsoft provides standard support for Windows 2000.

End-of-Service notifications

Be aware that Oracle will withdraw standard support for Oracle 8.1.7 end of 2004. Customers are advised to plan migration to a later version.

HP PA-RISC HPUX

Supported OS version: HP-UX 11i v1 (11.00 and 11.11)

Supported RDBMS: Oracle 8.1.7, 9.2
 Informix IDS 7.31, 9.40

Java 1.4 support

To enable java 1.4:

- Make sure the LD_PRELOAD is set. This can be arranged by:
 - a. create a script with the following content:


```
#!/bin/ksh
export
LD_PRELOAD=/opt/java1.4/jre/lib/PA_RISC2.0/hotspot/libjvm.sl
$BSE/bin/bshell6.2 $@
```
 - b. create a new bshell entry in the \$BSE/lib/ipc_info like bshell_j14, pointing to the script

Just copy the 'bshell' entry and change the entries, example:

```
bshell_j14      s      0      0      p
${BSE}/bin/bshell_j14
```
 - c. make sure the bshell name in the BW configuration is: bshell_j14
 - d. make sure in the BW configuration is: -set LD_PRELOAD=""
- Make sure the file \${BSE}/java/jvm_options exists and contains: -Xusealtsigs
- Make sure the SHLIB_PATH in \${BSE}/lib/bse_vars points to the Java 1.4 libraries:


```
SHLIB_PATH=/opt/java1.4/jre/lib/PA_RISC2.0:/opt/java1.4/jre/lib/PA_RISC2.0/hotspot:/opt/java1.4/jre/lib/PA_RISC2.0/native_threads
```

IBM Power_PC AIX

Supported OS version: AIX 5.1 and 5.2

Supported RDBMS: Oracle 8.1.7, 9.2
 DB2 UDB V8.1

DB2 UDB

Make sure the shared library search path LIB_PATH of the environment is pointing to the DB2 libraries.

Java 1.4 support

Make sure the file \${BSE}/java/jvm_options exists and contains:
 -Djava.compiler=NONE

Microsoft x86 Windows

Supported OS version: Windows 2000 and 2003

Supported RDBMS: Oracle 8.1.7, 9.2
SQL Server 2000

Java support

- 1 Install the Sun JRE

Version 1.3.1 can be downloaded at

http://java.sun.com/products/archive/j2se/1.3.1_09/index.html.

- 2 Make sure the System Environment PATH variable contains the following paths:
 - a Required paths of the JRE, for example: <JRE install dir>\bin
 - b Required path of the hotspot library, for example <JRE install dir>\bin\hotspot Only valid for java1.3
 - c Required path of the jvm.dll, for example <JRE install dir>\bin\client Only valid for java 1.4
 - d C:\Baan\shlib # assuming default installation of Baan
 - e C:\Baan\bin # assuming default installation of Baan

Sun Sparc Solaris

Supported OS version: Solaris 8 and 9

Supported RDBMS: Oracle 8.1.7, 9.2

Java 1.4 support

Make sure the file \${BSE}/java/jvm_options exists and contains: [-Xusealtsigs](#)

Make sure the LD_LIBRARY_PATH in \${BSE}/lib/bse_vars points to the Java 1.4 libraries

Java support

For this portingset J2SE 1.3.1.x is the recommended version.

Customers are advised to use the latest available minor java version.

If the vendor does not support a specific J2SE version anymore, support by SSA is also dropped.

OS	Java 1.3.1	Java 1.4.2
HP PA-RISC HP-UX	yes	yes
IBM PowerPC AIX	yes	yes
Microsoft i386 Windows	Sun JRE	Sun JRE
Sun SPARC Solaris	yes	yes

Shared memory default size too low

The size of shared memory is set too small by default. It should be increased to (at least) 64 Mb after the installation. Instructions on how to set the maximum size of shared memory can be found in the *SSA® Enterprise Server 7 Administrator's Guide* (U8394A US) and the *SSA® Enterprise Server 7 Technical Manual* (U8172B US).

Financial Statements and integration with Crystal Enterprise

The integration with Crystal Enterprise via the SSA OpenWorldX Connector for OLE-DB works on Windows 2000, but does not work on Windows 2003. Pre-requisite for the integration to work is that Microsoft's MDAC version 2.7 has been installed on the machine where Crystal and the SSA OpenWorldX Connector for OLE-DB Client are installed. Any other version of MDAC will cause the integration to fail. MDAC version 2.7 does not run on Windows 2003 (here 2.8 is used). When on Windows 2000, it is possible to upgrade to 2.7 from earlier versions.

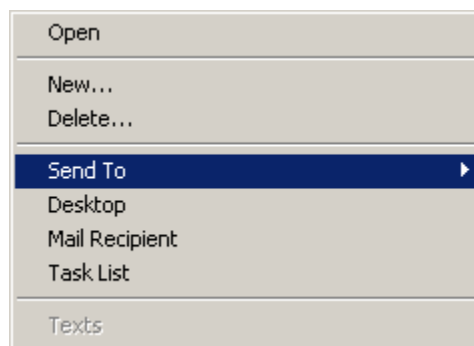
For MDAC version 2.7, please check the Microsoft web site

(<http://www.microsoft.com/downloads/details.aspx?familyid=9ad000f2-cae7-493d-b0f3-ae36c570ade8&languageid=f49e8428-7071-4979-8a67-3cffcb0c2524&displaylang=enit>).

Whenever new information becomes available on this issue, solution 146454 will be updated.

“Send To” in context menu does not work

Currently the “Send To” option in the context menu does not work. As an alternative “Desktop”, “Mail Recipient” or “Task List” can be selected directly.



Audit Trail security

In the previous tools version there was an issue that security rules with regards to the audit information were not checked. This is resolved in the latest SSA ES 7.6 tools update of September 30, 2004.

As a consequence it is possible that after installing the tools update, users working with audit information are not allowed anymore to execute certain tasks in the auditing area that they previously could.

This can be resolved by setting up the required authorizations for these users in the Audit Trail Security (ttaud3137m000) session.

Change in licensing strategy

The SSA Enterprise Server provides a new way to integrate in a message-based manner. The integration capability is based on Business Data Entities, also known as Business Objects, and is part of the SSA Technology Architecture.

The SSA Technology Architecture has a different rollout and licensing strategy than SSA ERP LN. The following components are now sold separately and should therefore be separately licensed:

- Business Data Entity Modeler (ProductID: **7033**)
- Business Data Entity Implementation Generator (ProductID: **7034**)
- Business Data Entity (Development) Repository (ProductID: **7035**)
- Adapter for ERP LN (ProductID: **7013**)

So if you want to customize the Business Data Entities or to create new ones, generate the implementation and use them you need to request a license for:

- SSA Enterprise Studio (ProductID: **10146**)
- Business Data Entity Modeler (ProductID: **7033**)
- Business Data Entity Implementation Generator (ProductID: **7034**)

- Business Data Entity (Development) Repository (ProductID: **7035**)
- Adapter for ERP LN (ProductID: **7013**)

If you just want to use the existing Business Data Entities you need to request a license for:

- Business Data Entity (Development) Repository (ProductID: **7035**)
- Adapter for ERP LN (ProductID: **7013**)

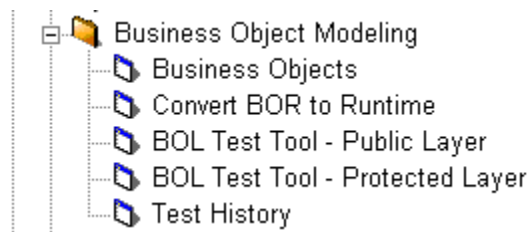


Figure 1. Excerpt from the SSA ERP LN menu (Tools->Application Development)

In order to use the Business Objects session (see figure 1) you need to request a license for:

- SSA Enterprise Studio (ProductID: **10146**)
- Business Data Entity Modeler (ProductID: **7033**)

In order to use the Convert BOR to Runtime session (see figure 1) you need to request a license for:

- SSA Enterprise Studio (ProductID: **10146**)
- Business Data Entity Implementation Generator (ProductID: **7034**)

In order to use the BOL Test Tool – Public Layer, BOL Test Tool – Protected Layer, and Test History sessions (see figure 1) you need to request a license for:

- SSA Enterprise Studio (ProductID: **10146**)

Chapter 4

Technical notes SSA ERP LN new installation

4

Install SSA ES 7.6 tools update with SSA ERP LN

An update to the SSA Enterprise Server 7.6 has been released and is available via PMC solutions. The involved PMC solutions (144077 and 146454) can be found via Solution **146454** at the SSA OnePoint support site: www.support.baan.com.

This section describes the process to incorporate the tools update in the standard installation process for a new SSA ERP LN 6.1 installation.

The SSA ERP LN 6.1 installation is performed via the Staging Wizard and Installation Wizard. To include these PMC solutions in the initial installation, take the following steps:

- 1 Import the SSA Enterprise Server 7 and SSA ERP LN 6.1 components in the Staging Wizard as described.
- 2 Download the PMC solutions.
- 3 Restart the Staging Wizard by activating:
<staging wizard installation folder>\StagingArea\Start\StagingWizard
- 4 Import the PMC solutions in the Staging Wizard by providing the source path where the PMC dumps are downloaded.
- 5 Continue the installation as described in the Overall installation guide for SSA ERP LN products, make sure to also select the PMC solutions for installation.

Error messages in log file with unexpected company number

In the \$BSE/log log files (Unix) or Event viewer (Windows), messages can appear about tables that do not exist. This is caused by Application tables being searched in company 000 (for example, "Table tdsmi050000 does not exist"), or Tools tables (tt, tl) being searched in an application company (for example, "tlbct700050: Table does not exist (error 506)").

These messages can be ignored.

Installation demo company 090 on Informix

Do not select installation of demo company 090 during the installation as the import will fail at this point.

However, if demo company 090 is required it must be installed after the SSA ERP LN installation has been completed.

Appendix A: "Installing demo company 090 with DEM" provides the procedure to manually import demo company 090.

DB2v5 installation exceeds shm_max_dd_cache_size

During the installation messages can occur that no more shared memory is available, because the value of shm_max_dd_cache_size is reached. This is not a fatal error.

Messages from bdbpost during installation on Informix

The following message can be logged by bdbpost during the import of the demo companies, when it tries to drop a table and the action fails:

- "Errno 0 bdb_errno 214 (Unallowed operation for mapping company numbers)"

This message is incorrect and can be ignored. The tables are created successfully.

Installation with Oracle: Table space issues

During an installation with Oracle, it is possible that error 2555 will occur (Oracle error 1555 - snapshot too old). To prevent this, the Undo table space should at least be 500 Mb.

Log messages that can be ignored

During the installation it is possible that the following log's messages occur:

- "No audited columns in table Tdpur000050".
- "Table tdsmi054000 does not exist"

This can occur for multiple tables. These messages are not fatal and can be ignored.

Company number in SSA Installation Wizard

When entering a company number in the SSA Installation Wizard, you must ignore leading zero's for companies other than 000. When entering "050" you will get error "Number must not be less than one.". Use "50" instead.

Cancelling the installation

If the installation is cancelled, the following question can sometimes appear:

- **Do you want to remove all settings?**

During update installations on an existing ERP LN environment always select **no**.

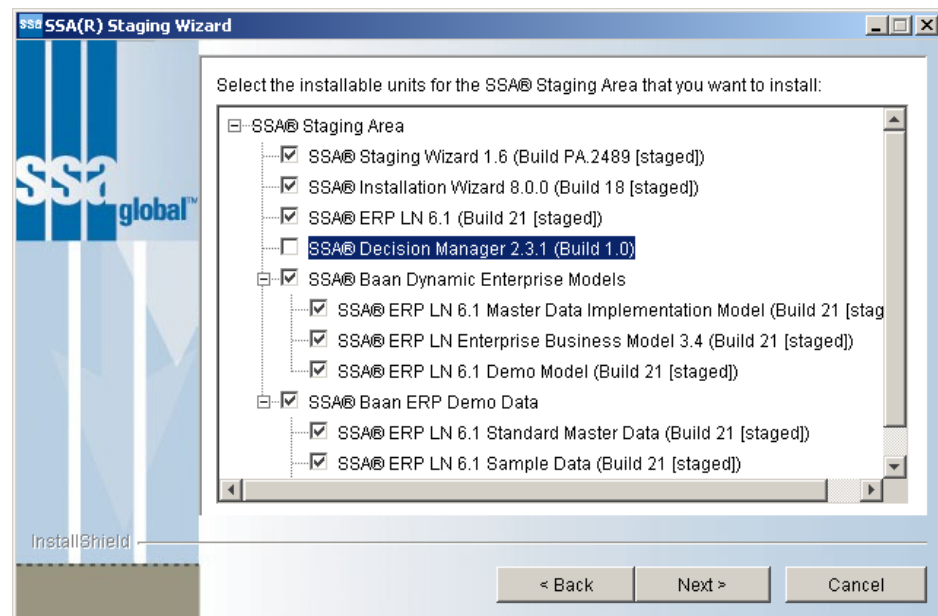
Only select **yes** if the whole \$bse environment needs to be removed.

Using Staging Area

If the Staging Wizard is used from the Staging Area it is possible that SSA Decision Manager is listed as an installable unit.

Note

Make sure not to select this during SSA ERP LN installation.



For ASM and SLM only: directory names in lower case [Unix only]

The following applies only if a fully new installation is intended (\$bse directory does not exist yet) and ASM and/or SLM and also a portingset are selected.

Make sure to type all directory names in lowercase during the installation of SLM and ASM.

Corrective actions in case a name is given in uppercase.

If for some reason capitals are used in directory names two directories will be created on OS level, one with the given name and another with the same name but then all letters in lower case.

The directory with only lowercase characters will contain the data:

- Action 1: Remove the directory with uppercase letters
- Action 2: adjust directory name in \$bse/lib/bse_vars (if applicable)

Example:

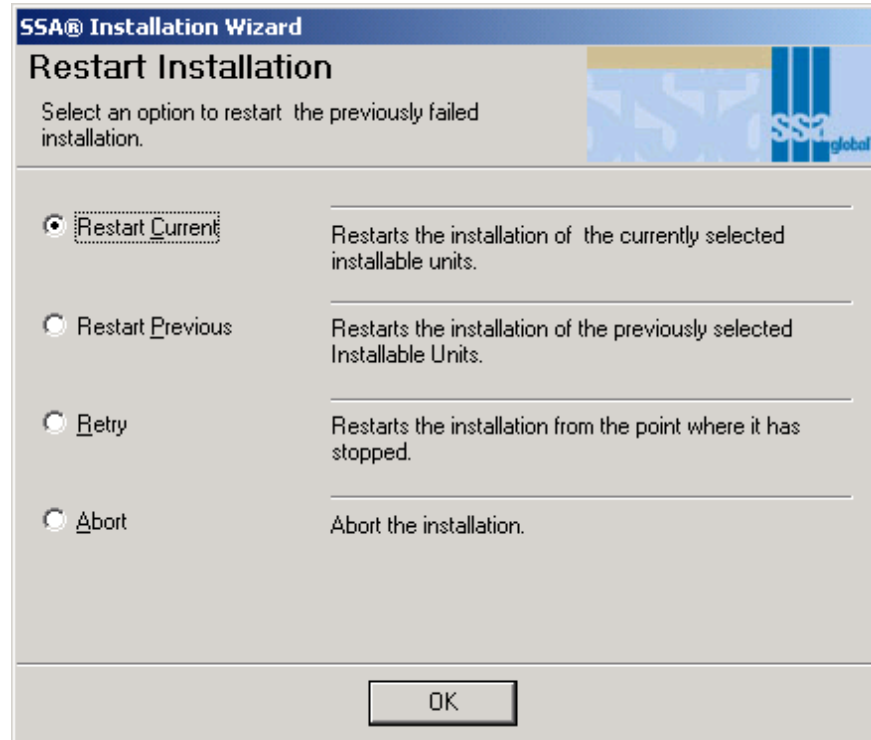
```
bsp>ls -ltr
total 3
drwxrwxr-x  2 bsp bsp      96 May 25 14:29  shared_MV
drwxrwxr-x 10 bsp bsp    1024 May 25 14:30 shared_mv
```

In this case remove directory "shared_MV"

Failure during the installation of ASM or SLM

If the installation fails during the installation of ASM or SLM take the following actions:

- 1 Correct the problem as indicated in the log files
- 2 Restart the installation Wizard and choose “**Retry**”



If by accident the choice “**Restart Current**” or “**Restart Previous**” is given, the installable unit after the ASM and SLM installation will crash. To solve that problem:

- a Adjust \$bse\lib\install\baanerpserver.info (serverside)
change “installstatus” from 4000 to 0
- b Adjust <Staging Area>\Logging files\<environment>\baanerpclient.info (client)
change installstatus to 0
or (if no staging area is used)
adjust %TEMP%\BaanERP Setup\<environment>\baanerpclient.info (client)
(%TEMP% is Windows temp. directory) change installstatus to 0

Post installation steps

To be sure all required tables are created run the Create Tables (ttaad4230m000) session for company 000 as well as the demo companies 050, 070 and 090 (if selected to be installed).

Startup menu after installation

After the installation, user bsp may have the **Tools** menu as **startup** menu instead of the **SSA ERP LN 6.1 startup** menu (tccom000000000). This can be changed in the User Data (ttaad2500m000) session.

Chapter 5

Technical notes SSA ERP LN upgrade installation

5

This chapter describes the procedure to update an existing SSA ERP LN 6.1 GA version with the SSA Enterprise Server 7.6 update released Sept 30 2004. The SSA Enterprise Server 7.6 update is published in solution **146454** at the SSA OnePoint support site: www.support.baan.com .

Note

If an earlier version of SSA ERP LN 6.1 has been installed, it must first be upgraded to SSA ERP LN 6.1 GA version.

Tools upgrade, solution 146454

- To install the new tools version, you need to download and scan the files 144077 and 146454 at www.support.baan.com. After scanning these files, the following individual solutions are present in the Process Solutions (ttpmc2101m000) session:

- 144077
- 146454-01
- 146454-02
- 146454-03

VERY IMPORTANT:

Before installing the PMC solutions you must do the following:

- Empty shared memory completely. Do this by renaming **BSE/lib/srdd_tab6.2** into **BSE/lib/srdd_tab6.2_org**.
- For Windows, reboot the machine.
- For Unix, stop and start the BSE environment.
- If shared memory is not empty before upgrading, many serious problems will occur, especially corrupt DD's, which will be very difficult to repair.
- "Process Solutions" (ttpmc2101m000):
 - Select solution **146454-01** and select **Check and Install** from the specific menu.
 - Modify the solution range to **From 146454-01 To 146454-03**, check the **Check to Install** and **Install** checkboxes and the other options as required by you.
 - After you press the **Check/Install** button, the solutions will be installed (solution 144077 is automatically included).

Note

If for some reason the installation aborts (for example due to a power dip or disk full), you may need to run the Create Runtime Data Dictionary for Tools (ttadv5213m000) session before you can restart the installation.

- Compile labels with ttadv1243m000. Select **full ranges**, except for Version, select **Version From 7.6 To 7.6**.

The 'Compile Labels' dialog box is shown with the following settings:

Field	From	To
Language		z
Package	tl	tt
Version	7.6	7.6
Release		zz
Customer		zzzz

Buttons: Compile, Close, Save Defaults, Get Defaults, Add to Job..., View Log File, Clear Log File, Help.

Specify location of generated files:

- ☐ Install files on remote machine
- ☒ Install files on local machine

Bottom text field: ttadv1243m000 000

- Create Runtime Data Dictionary for Tools (ttadv5213m000). Select **full ranges** and mark checkbox **Also Dump Data Definitions**.
- Logout from the ERP environment (exit Worktop/BW) and login again.
- Create new shared memory content by running the Shared Memory Data (ttaad4150m000) session, and perform the Convert to Runtime via the **Specific** menu.
- After this shared memory can be reloaded again.

Appendix A

Installing demo company 090 with DEM

A

This section describes the procedure to manually install demo company 090 including the required DEM setup.

Installation of the demo data

Go to the Staging Area and then to the directory for the Installable Units.

You will find the dump of the demo tables in the following sub directory:

- SSA_ERP_LN_Demo_Data_6.1\commfunc\line.0001\test\tcB61_a\090

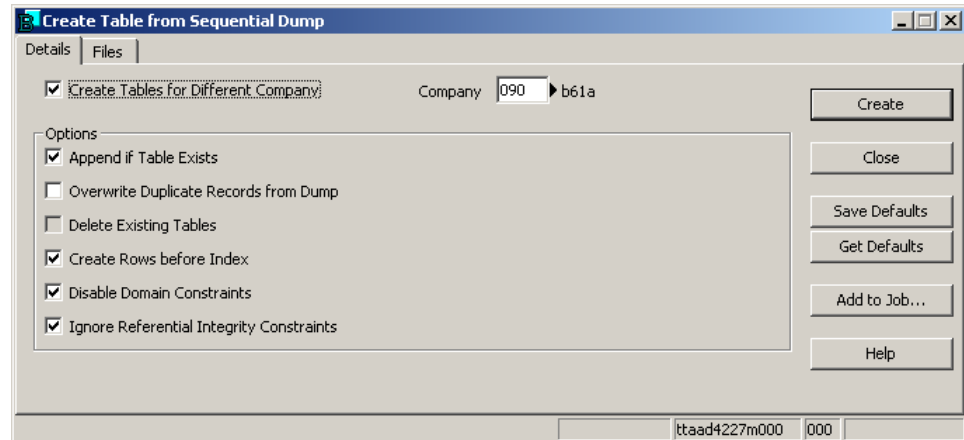
This dump needs to be placed in a temporary directory on your SSA ERP LN server. When using Unix as server system you need to use FTP in binary mode, when using Windows you can just copy the file.

Start a commandline and set the ERP LN environment variables:

- Unix: BSE, BSE_TMP and include \$BSE/bin in the PATH variable

Run an unzip tool to unzip the comp090.pre.Z to comp090.pre.

Start the Create table from sequential dump (ttaad4227m000) session, and import the company. Make sure to provide the name of the dump-file on the tab **Files** as well as an error file.



When the installation has finished check the error file and run the Reorganize Tables (ttaad4225m000) session. In that session the option Repair Reference Counters and Reference Integrity need to be set to **Yes**.

Import version data with ESM.

Go to the Staging Area and then to the directory for the Installable Units.

The following three dumps need to be copied to a temporarily directory on your server:

- standard_c_2_90_20040224.dem.Z
dir: "SSA_ERP_LN_Demo_Data_6.1\demmodel"
- component_050_20040702.cmp.Z
dir: "SSA_ERP_LN_Master_Data_Implementation_Model_6.1\demmodel"
- imd_b61a_050_20040702.dem.Z
dir: "SSA_ERP_LN_Master_Data_Implementation_Model_6.1\demmodel"

When using Unix as server system you need to use FTP in binary mode, when using Windows you can just copy the file.

Next you must import the DEM version that contains the Enterprise Structure Model to have the demo data working.

Take the following steps:

- 1 Change your Company to 090.
- 2 Start the Import Version Dumps (tgbrg1245m000) session
- 3 The following message appears:
 "tgbrg00176 - Import Version Dump"
 Running Component and Running Component Release are not specified
 Do you want to define them?"
 Click **No**
- 4 Session will be started: Fill in
 File = <tempdirectory>/standard_c_2_90_20040224.dem.Z
 Import Model Items into different Version = unchecked
 Overwrite = unchecked
 Check Data Integrity = unchecked
 Print Errors = checked
 Print Warnings = checked
 Hide Sessions = unchecked
 Then the button **Yes on all Tabs** needs to be pressed..
 After that the import can be started through pressing the button "Import".
- 5 The next message appears:
 "tgbrg00056: File Browser
 Version Standard_C (Version with Operational Enterprise Structure Model) of
 dump does not exist; add version ?"
 Click **Yes**
- 6 The following message appears:
 "tgbrg00054: File Browser
 Import components from version "Standard_C" into version "Standard_C?"
 Click **Yes**
- 7 When the import is finished a message is displayed that the import is
 completed.
 Click **OK**
- 8 After that the next message appears:
 "tgbrg00091: File Browser
 Change current modeling version to version "Standard_C"?
 Click **No**

Import component data.

The following steps explain how to import some master data for DEM, the so-called Component data.

- 1 Start the Import Component Model Data (tgbrg5256m000) session.
- 2 On the First form **Settings** the fields below need to get the value described below:
 File = <tempdirectory>/component_050_20040702.cmp.Z
 Print Errors = checked
 Overwrite = unchecked
 Components = From->space; To->zzzzz(max.value)
 Component Releases = From->space; To->zzzzz(max.value)
 Applications = checked and then From->space; To->zzzzz(max.value)
 Subapplications = checked
 Do not overwrite Texts within = all unchecked
 Import Application Conversion Data = checked
- 3 On the Second form **Application Conversion Data** the fields below need to get the value described below:
 Source Component = From->space; To->zzzzz(max.value)
 Source Component Release = From->space; To->zzzzz(max.value)
 Source Application = From->space; To->zzzzz(max.value)
 Destination Component = From->space; To->zzzzz(max.value)
 Destination Component Release = From->space; To->zzzzz(max.value)
 Destination Application = From->space; To->zzzzz(max.value)
 Do not overwrite Texts within = unchecked
- 4 On the First form click **Import**.

Fill in the DEM parameters.

After the first two imports the the following procedure explains how the DEM parameters can be set:

- 1 Start the DEM parameters (tgbrg0135s00) session.
The standard password for this session just after delivery is BAAN.

Note

The password for all DEM sessions using a password can be changed using the Change Password for Enterprise Modeler Authorizations (tgbrg1160m000) session.

- 2 On the First form **DEM** the fields below need to get the values described below:
Use Employee - Project Model link = checked
Evaluate Static Conditions = checked
Activity order in DMB = Sorted on External Code (Ascending)
Operational ESM
Model = Std_C
Version = Standard_C
Running ERP Component
Component = SSA Baan ERP
Component Release = 6.1
Directory for DEM Version Dumps = choose a directory

When saving, ttstpslopen (Select Device) might appear.

In case the Select Device (ttstpslopen) session appears, fill in a device and click **Continue**.

- 3 The next messages appear:
"tgbrg0018: DEM Parameters
There are differences found, between the new and the old model, which can give serious problems in your environment. Are you sure ?"
Click **Yes**.
- 4 "tgbrg0275: DEM Parameters
Please check the Enterprise Modeling Management module (tceemm) to ensure that you have a stable environment"
Click **OK**

Import DEM version dump IMD.

The IMD dump is a DEM version with Business Processes to help you setup Master Data.

- 1 Start the Import Version Dump (tgbrg1245m000) session.
On the First form **Settings** the fields below need to get the value described below:
File = <tempdirectory>/imd_b61a_050_20040702.dem.Z
Import Model Items into different Version = unchecked
Overwrite = unchecked
Check Data Integrity = unchecked
Print Errors = checked
Print Warnings = checked
Hide Sessions = unchecked
Then the button **Yes on all Tabs** needs to be pressed..

After that the import can be started click **Import**.
- 2 When saving ttstpspopen (Select Device) appears.
Fill in a device and click **Continue**.
- 3 The next message appears
"tgbrg00056: File Browser
Version IMD_B61a (SSA ERP LN 6.1a Implementation Master Data) of dump
does not exist; add version ?"
Click **Yes**.
- 4 "tgbrg00054: File Browser
Import components from version "IMD_B61a" into version "IMD_B61a"?
Click **Yes**.
- 5 When the import is completed the next message appears:
"tgbrg00091: File Browser
Change current modeling version to version "IMD_B61a"?
Click **No**.