



►► Infor ERP LN 6.1 SLM License Updater

User Guide

Copyright © 2007 Infor Global Technology Solutions GmbH and/or its affiliates and subsidiaries

All rights reserved. The word and design marks set forth herein are trademarks and/or registered trademarks of Infor Global Solutions Technology GmbH and/or its affiliates and subsidiaries. All rights reserved. All other trademarks listed herein are the property of their respective owners.

Important Notices

The material contained in this publication (including any supplementary information) constitutes and contains confidential and proprietary information of Infor Global Solutions.

By gaining access to the attached, you acknowledge and agree that the material (including any modification, translation or adaptation of the material) and all copyright, trade secrets and all other right, title and interest therein, are the sole property of Infor Global Solutions and that you shall not gain right, title or interest in the material (including any modification, translation or adaptation of the material) by virtue of your review thereof other than the non-exclusive right to use the material solely in connection with and the furtherance of your license and use of software made available to your company from Infor Global Solutions pursuant to a separate agreement ("Purpose").

In addition, by accessing the enclosed material, you acknowledge and agree that you are required to maintain such material in strict confidence and that your use of such material is limited to the Purpose described above.

Although Infor Global Solutions has taken due care to ensure that the material included in this publication is accurate and complete, Infor Global Solutions cannot warrant that the information contained in this publication is complete, does not contain typographical or other errors, or will meet your specific requirements. As such, Infor Global Solutions does not assume and hereby disclaims all liability, consequential or otherwise, for any loss or damage to any person or entity which is caused by or relates to errors or omissions in this publication (including any supplementary information), whether such errors or omissions result from negligence, accident or any other cause.

Publication Information

Document code: U9190A US

Release: Infor ERP LN 6.1 SLM License Updater

Publication date: January 07

Table of Contents

Chapter 1	Introduction.....	1-1
Chapter 2	Install SLM License Updater.....	2-1
	Download SLM License Updater	2-1
	Install SLM License Updater	2-1
Chapter 3	Run SLM License Updater	3-1
	Functionality.....	3-1
	Adding New Product IDs.....	3-1
	Copy Named Users.....	3-1
	Start SLM License Updater.....	3-2
	Update SLM Configuration.....	3-3
	Revalidate SLM Configuration	3-7
	Named Users.....	3-7

About this Guide

Send us your comments

We continually review and improve our documentation. Any remarks/requests for information concerning this document or topic are appreciated. Please e-mail your comments to documentation@infor.com.

In your e-mail, refer to the document number and title. More specific information will enable us to process feedback efficiently.

Chapter 1

Introduction

1

New product ID codes are being introduced to provide further flexibility in the Infor ERP_{LN} system.

To ensure your current licensed functionality will not be affected, implementations of Feature Pack 3 need to be revalidated. If you don't take action, any new patch or feature pack you install on your system per 28th February 2007 or later, will invalidate parts of your current licensed functionality.

The SLM License Updater will help you to insert the new product IDs in your SLM configuration. This document describes how to use this SLM License Updater.

Note: It is only necessary to install and run the SLM License Updater if you are running ERP_{LN} Feature Pack 3 or if you are in the process of implementing FP3.

Chapter 2

Install SLM License Updater

2

Download SLM License Updater

The SLM License Updater is an executable (slm_Inupd.exe), which is contained in the file slm_Inupd.zip. You can download this zip file via solution 216300, which is available in the Infor OnePoint Support site.

You should download this file to the Windows computer, from which you normally maintain the SLM configuration using the MMC SnapIn.

Install SLM License Updater

If you open the downloaded zip file slm_Inupd.zip, the file slm_Inupd.exe must be extracted. The destination location is not important, you can run the program from where you want, e.g. the Windows Desktop.

Chapter 3

Run SLM License Updater

3

Functionality

Adding New Product IDs

The SLM License Updater will automatically add some new product IDs in your SLM configuration.

If you have configured 10056 (the ERP_{LN} product ID), the SLM License Updater will automatically add:

- 7114 – ERP_{LN} 6.1 (7114)
- 7115 – ERP_{LN} 6.1 (7115)
- 7116 – ERP_{LN} 6.1 (7116)

If you have configured 10896 (the Service product ID), the SLM License Updater will automatically add:

- 7117 – ERP_{LN} 6.1 Service (7117)

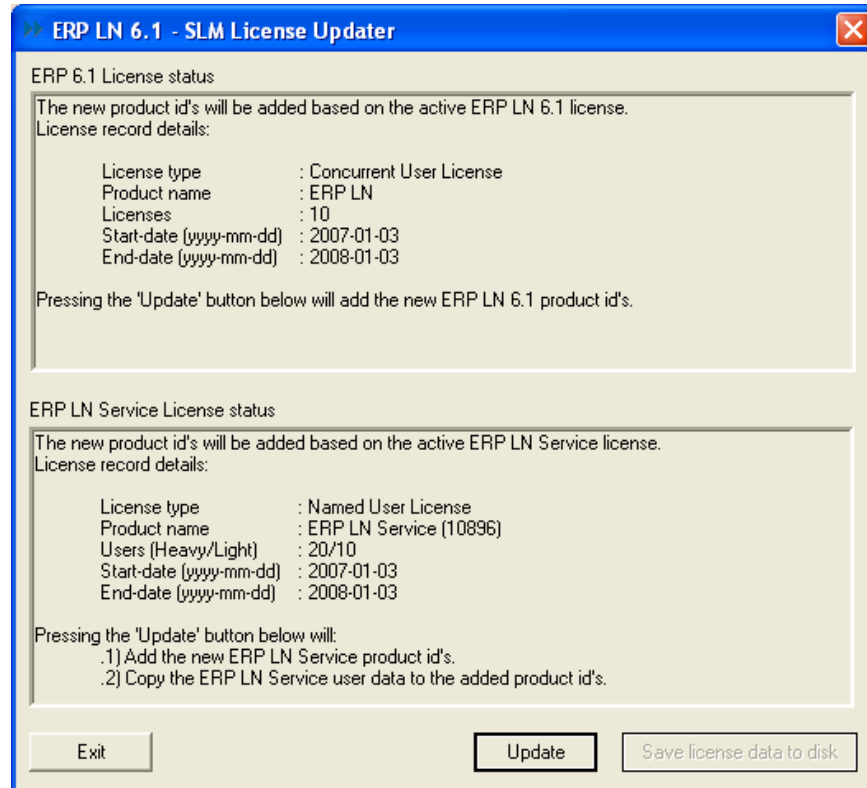
Copy Named Users

Named users, which are linked to one of the product IDs will be copied to the new product IDs as well.

Start SLM License Updater

Double click the slm_inupd.exe file from the location to which you extracted it from the zip file (see Chapter 2).

You will see the following screen popping up:

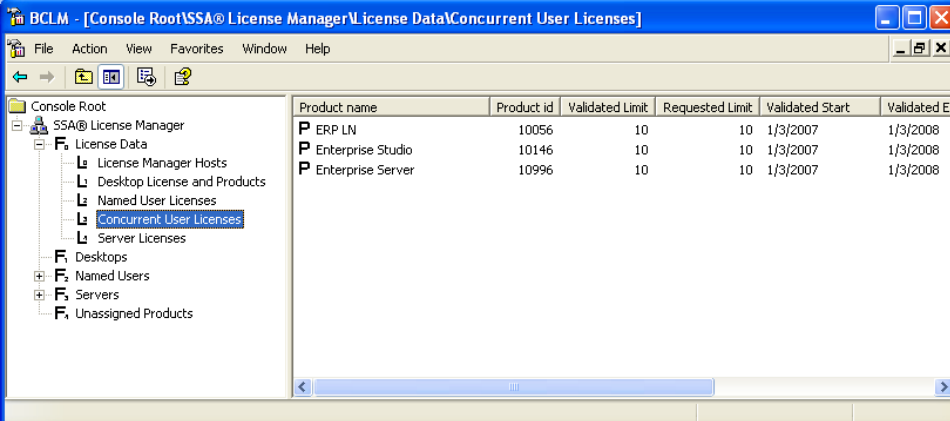


The top part of the screen applies to the ERP_{LN} license (product ID 10056), the bottom part applies to the ERP_{LN} Service license (product ID 10896). If you don't have an ERP_{LN} Service license, the bottom part will be grey.

In the example above, for ERP_{LN} there is a Concurrent User License, for ERP_{LN} Service there is a Named User License. Depending on the license types you use, the screen may look a little bit different.

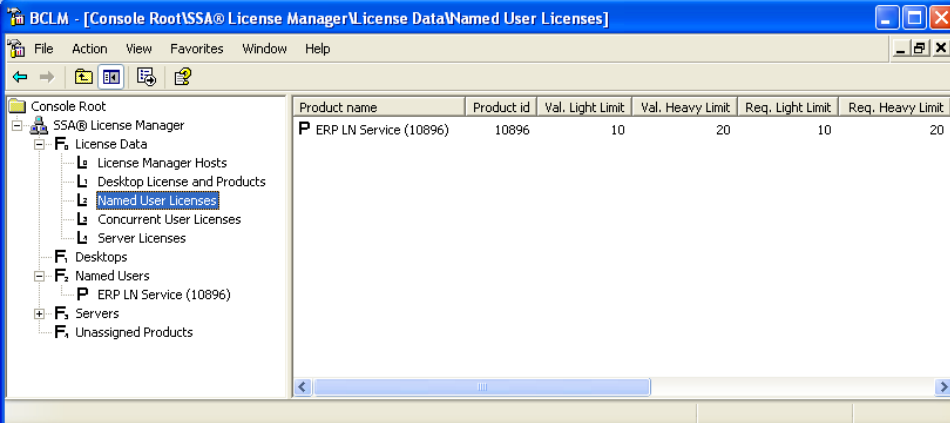
Update SLM Configuration

The current SLM configuration may be like this:



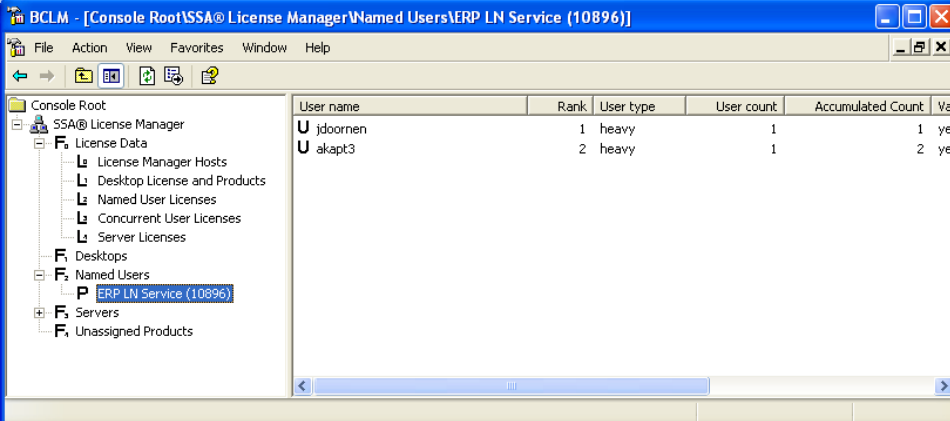
BCLM - [Console Root\SSA@ License Manager\License Data\Concurrent User Licenses]

Product name	Product id	Validated Limit	Requested Limit	Validated Start	Validated End
P ERP LN	10056	10	10	1/3/2007	1/3/2008
P Enterprise Studio	10146	10	10	1/3/2007	1/3/2008
P Enterprise Server	10996	10	10	1/3/2007	1/3/2008



BCLM - [Console Root\SSA@ License Manager\License Data\Named User Licenses]

Product name	Product id	Val. Light Limit	Val. Heavy Limit	Req. Light Limit	Req. Heavy Limit
P ERP LN Service (10896)	10896	10	20	10	20



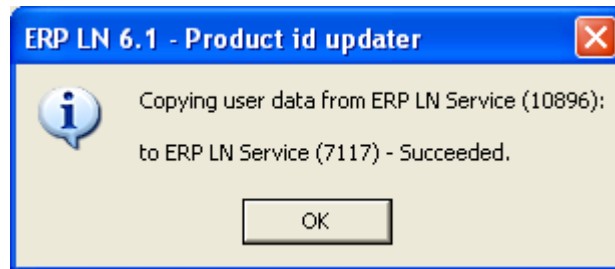
BCLM - [Console Root\SSA@ License Manager\Named Users\ERP LN Service (10896)]

User name	Rank	User type	User count	Accumulated Count	Valid
U jdoornen	1	heavy	1	1	yes
U akapt3	2	heavy	1	2	yes

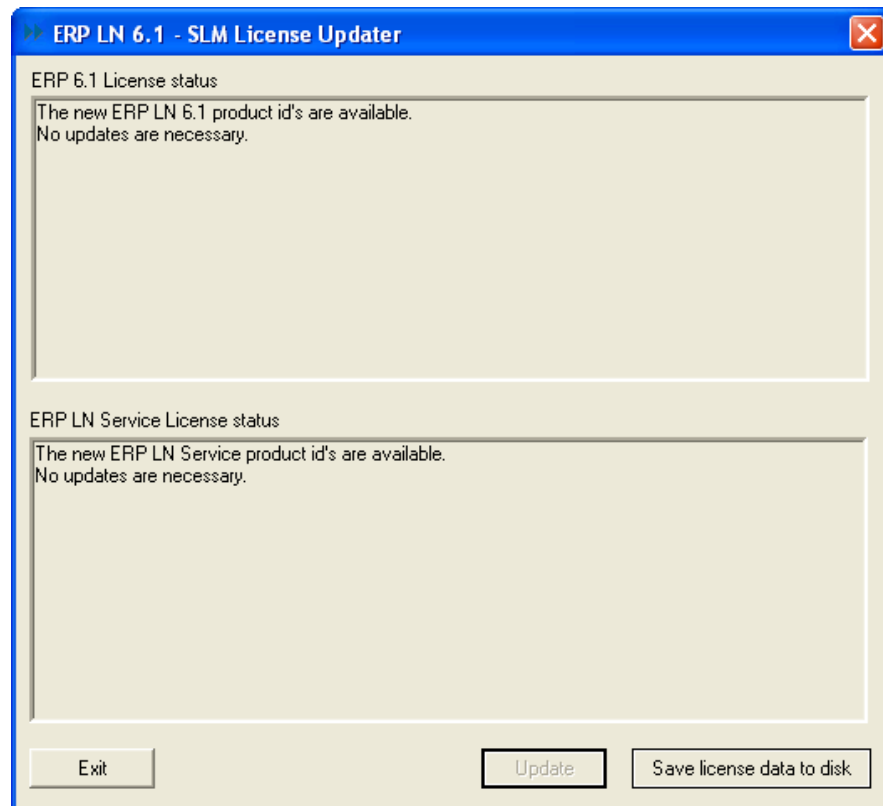
After pressing the “Update” button, the new product IDs will be added to the SLM configuration. The following message will be displayed after the new product IDs have been added:



For a Named User License an additional message will be displayed:



When the copying is finished, the SLM License Updater screen will look like this:



You can use the "Save license data to disk:" button to save your license.xml file to the local disk of your Windows client, which is necessary to revalidate your configuration. You can also create this file from the SLM Configuration Console.

Use the "Exit" button to leave the program.

After using the SLM License Updater your SLM configuration will be like this:

BCLM - [Console Root\SSA@ License Manager\License Data\Concurrent User Licenses]

Product name	Product id	Validated Limit	Requested Limit	Validated Start	Validated End
ERP LN	10056	10	10	1/3/2007	1/3/2008
Enterprise Studio	10146	10	10	1/3/2007	1/3/2008
Enterprise Server	10996	10	10	1/3/2007	1/3/2008
ERP LN 6.1 (7114)	7114	0	10		
ERP LN 6.1 (7115)	7115	0	10		
ERP LN 6.1 (7116)	7116	0	10		

BCLM - [Console Root\SSA@ License Manager\License Data\Named User Licenses]

Product name	Product id	Val. Light Limit	Val. Heavy Limit	Req. Light Limit	Req. Heavy Limit
ERP LN Service (10896)	10896	10	20	10	20
ERP LN Service (7117)	7117	0	0	10	20

BCLM - [Console Root\SSA@ License Manager\Named Users\ERP LN Service (7117)]

User name	Rank	User type	User count	Accumulated Count	Val
U?jdoornen	1	heavy	1	1	no
U?akapt3	2	heavy	1	2	no

Revalidate SLM Configuration

Note that after the SLM configuration has been updated with the new product IDs, software linked to the new product IDs will not yet run. You have to revalidate your configuration. This must be done before February 28th, 2007. From that date onwards you may receive software in PMC solutions that needs the new product IDs having been validated.

The procedure to get a new activation key is:

- 1 Save your license file to disk.
- 2 Go to the OnePoint Support website, and request an SSA Baan software key.
- 3 Fill in the details and the saved license file.
- 4 Submit the form.
- 5 After the key is returned to you, apply it in the SLM Configuration Console.

More information can be found in the SSA® License Manager – Installation and Configuration Guide.

Note: If you change the configuration in the future (e.g. the number of concurrent users) for ERP_{LN} (10056) or ERP_{LN} Service (10896), you also need to change the configuration for the new product IDs.

Named Users

If you are using the named user license model for ERP_{LN} or ERP_{LN} Service and you are using session “Synchronize User Data with SLM” (ttslm0230m100), you need to install PMC solution 216300. The following steps are needed in the given order:

- 6 Download, install and run the SLM License Updater.
- 7 Obtain a new Activation Key and enter this key in the SLM Configuration Console.
- 8 Install solution 216300.
- 9 Run session “Link SLM Product IDs to Users” (ttslm0230m000).
- 10 Run session “Synchronize User Data with SLM” (ttslm0230m100).