



Infor LN User Guide for Table Sharing

Important Notices

The material contained in this publication (including any supplementary information) constitutes and contains confidential and proprietary information of Infor.

By gaining access to the attached, you acknowledge and agree that the material (including any modification, translation or adaptation of the material) and all copyright, trade secrets and all other right, title and interest therein, are the sole property of Infor and that you shall not gain right, title or interest in the material (including any modification, translation or adaptation of the material) by virtue of your review thereof other than the non-exclusive right to use the material solely in connection with and the furtherance of your license and use of software made available to your company from Infor pursuant to a separate agreement, the terms of which separate agreement shall govern your use of this material and all supplemental related materials ("Purpose").

In addition, by accessing the enclosed material, you acknowledge and agree that you are required to maintain such material in strict confidence and that your use of such material is limited to the Purpose described above. Although Infor has taken due care to ensure that the material included in this publication is accurate and complete, Infor cannot warrant that the information contained in this publication is complete, does not contain typographical or other errors, or will meet your specific requirements. As such, Infor does not assume and hereby disclaims all liability, consequential or otherwise, for any loss or damage to any person or entity which is caused by or relates to errors or omissions in this publication (including any supplementary information), whether such errors or omissions result from negligence, accident or any other cause.

Without limitation, U.S. export control laws and other applicable export and import laws govern your use of this material and you will neither export or re-export, directly or indirectly, this material nor any related materials or supplemental information in violation of such laws, or use such materials for any purpose prohibited by such laws.

Trademark Acknowledgements

The word and design marks set forth herein are trademarks and/or registered trademarks of Infor and/or related affiliates and subsidiaries. All rights reserved. All other company, product, trade or service names referenced may be registered trademarks or trademarks of their respective owners.

Publication Information

Release: Infor LN 10.8.x

Publication Date: August 3, 2024

Document code: ln_10.8.x_Incomtableshug__en-us

Contents

About this guide.....	5
Contacting Infor.....	5
Chapter 1: Introduction.....	6
Chapter 2: Technical Aspects of Table Sharing.....	7
Data sharing methods.....	7
Logical table linking.....	7
Data replication.....	8
Manual synchronization.....	9
Table references.....	9
Networks.....	11
Multiple data servers.....	11
Chapter 3: Specifying Tables to Be Shared.....	13
Multicompany setup.....	13
EM company.....	13
Master data company.....	14
Multicompany structure.....	14
Archive companies.....	14
Required functionality.....	15
Maximum sharing.....	15
General guidelines.....	15
Chapter 4: Using the Table Sharing Modeler.....	17
Preparing master data for the Table Sharing Modeler.....	17
To import predefined table sharing data.....	18
Using table sets and table sharing sets.....	18
Updating a table sharing configuration to the next package combination.....	20
Consequences of automatic update of table sharing configuration.....	21

Chapter 5: Using Predefined Table Sets	22
Available table sets	22
Numbering of table sets	22
Predefined table sets	23
Relations between table sets	29
General multicompany setup	29
Central common data	30
Multiple financial companies	37
Invoicing	42
Order Management	44
Purchasing	45
Sales	45
General Order Management	45
Manufacturing	47
Enterprise Planning	49
Warehousing	50
Multicompany Warehouse Transfer	50
Freight Management	50
Service	51
Project	53
Quality Management	55
ODM	56
Localizations	57
People	60
Tools	62
Maximum Sharing	62
Index	63

About this guide

This document provides technical and functional information to share data when you implement LN.

Depending on the multicompany scenario you choose, an implementation team must decide whether or not tables must be logically linked, or if data must be synchronized in another way, to achieve availability of data across various companies.

Because each enterprise has unique requirements, this document does not attempt to determine the preferred multicompany structure for specific situations. This decision must be made after a thorough investigation of the business and technical requirements and LN's capabilities.

The reader is assumed to have a basic understanding of the LN software and is familiar with LN terminology.

Contacting Infor

If you have questions about Infor products, go to Infor Concierge at https://mingle-portal.us2.pr3.inforcloudsuite.com/v2/CONCIERGE_PRD and create a support incident.

For the latest documentation, go to Documentation Central at docs.infor.com. We recommend that you check this website periodically for updated documentation. If you have comments about Infor documentation, contact documentation@infor.com.

Chapter 1: Introduction

In all implementations in which more than one company is involved, table sharing must be available. This document describes how to set up table sharing in various scenarios and how to determine the tables to be shared.

The intended audience of this document are technical users such as system administrators, who need to know the technical background of table sharing and the alternatives, and functional users and implementation consultants, who are functionally responsible for the tables to be shared.

Note that this document is not a cookbook to specify the required table sharing. Although both this document and the Table Sharing Modeler offer the user extensive information about table sharing, the user must still analyze their requirements and table sharing details to set up table sharing.

Chapter 2: Technical Aspects of Table Sharing

This chapter describes the technical details of table sharing and some alternatives for table sharing. Therefore, this chapter does not discuss table sharing related to multicompany setup and business requirements.

Data sharing methods

This chapter describes how the terms data sharing, data replication, exchange, table linking and distributed transactions are used and how these concepts relate. This chapter also describes the factors that you must take into account in regard to table linking.

Logical table linking

If two companies use the same physical data, the physical table exists, or is used, in only one company: the physical company. Each piece occurs only once: one instance of the same data. If the term logical table linking is used, users from multiple companies use one single physical instance of the data. If the company tables are on the same server, this can be accomplished by logical table linking. Access to specific data can be restricted, if required.

Advantages of logical table linking

Logical Table Linking takes place in real time, therefore, the moment a record is created or modified in one company, a record becomes available in all other linked companies as well.

The setup and maintenance of logical table linking is easier than the setup and maintenance of data replication.

Logical table linking is extremely reliable, because this type of linking is independent of network connections and user interventions.

Disadvantages of logical table linking

Table sharing implies that all attributes for a record are exactly the same in all companies. Therefore, suppose you share the item table and, for a particular item in a company, the product class is XXX. In this case, in all other companies, the product class for this item must be XXX as well.

Data replication

In this situation, each company has exactly the same data, but each company has a unique copy of the data. The same piece of data exists in multiple (physical) places: multiple instances of the same data. The process to copy the data is called data replication.

Data replication can be carried out by database table, by record, and by column. In the first case, the entire table is being shared. In the second and the third case, portions of a table are replicated between companies or databases. This situation assumes that the update of data is controlled to ensure appropriate consistency. Because reasons for sharing data vary, these examples illustrate this concept:

Example 1: General Item Data (tcibd001)

An item is manufactured in one company and sold to an assembly company. The item number and other item data can be identical in both companies, but some data, such as the supply source, must be specified separately in each company.

If the item type is Product, the supply source of the item can be Job Shop in the manufacturing company and Purchase in the assembly company. The other item data is identical, therefore it can be specified in the manufacturing company and replicated to the assembly company.

If item type Product is not used, the item type is Manufactured in the manufacturing company and Purchased in the assembly company. The other item data can be specified in the manufacturing company and replicated to the assembly company.

Example 2: General Item Data (tcibd001)

In this example, the purchase contracts for all items are centrally controlled in one company, but other companies purchase the items. In this case, the contracts company enters all data for purchased items, and then replicates the data to the company that purchases the items. Not each purchasing company needs to have the entire item file, but only the portion that the purchasing company purchases, while the contracts company has all purchased items.

Advantages of data replication

Rather than use table sharing by means of the logical linking of tables, you can replicate the content of tables between companies. The advantage is that, on company level, some (non-key) attributes of a record can differ by company. For example, if the bills of materials are replicated instead of shared, for each company, you can link a different warehouse to the bill of material. As a result, the bills of materials can be the same across all companies and only the warehouses differ. Using replication, you can also make only a subset of

the records available in other companies. For example, if you replicate items between companies, in a sales company, for example, by means of the item group, you can only make end items available.

In addition, you can replicate only a subset of items, for example, depending on the item group.

Note that replication also requires that the referenced tables are replicated or shared.

Disadvantages of data replication

Replication is not in real time, and therefore, for processes that require real-time integrated data as the financial integration processes, replication is not an option.

For replication, you also must take into account the sequence in which you replicate. First, you must replicate the child tables and then the parent tables, and therefore first the business partners and then the purchase contracts. During the replication process, the data must be frozen. This point is of particular importance if the replication process takes a lot of time.

Manual synchronization

If only a small number of records are the same between some companies, you can enter, maintain, and keep the records synchronized manually. Note that the more dynamic data is, the more difficult this process is. This solution is strictly procedural. Therefore, depending on the discipline of the users, the solution is error sensitive: data can be forgotten, updated too late, or typing errors may occur.

Advantages of manual synchronization

The main advantage is the flexibility so that only the data that really must be shared can be kept synchronized.

By manually keeping data synchronized, not all attributes of a record need to have the same value.

Disadvantages of manual synchronization

The main disadvantage is that this method depends on user interaction. Therefore, the method depends on the user's time - because the method is not a real time procedure and the user may forget to update the data - and users can make mistakes.

Table references

Many tables include fields, also known as data elements, from other tables. These fields are called referenced data.

The Implemented Software Components (tccom000) table, for example, has references to these tables:

- Addresses (tccom130)
- Countries (tcmcs010)
- Languages (tcmcs046)

In this case, addresses and countries in turn have references to other tables.

Each table reference has these two characteristics:

- **Reference Mode:** Describes the relation between the table and the referenced table. The options include the following:
 - **Mandatory:** The table field must contain a value that is present in the reference table. For example, the reference from Addresses to Countries is mandatory. As a result, each address must have a country, otherwise, the address cannot be saved.
For table sharing, this implies that if the address table is shared, the country table must also be shared.
 - **Mandatory Unless Empty:** The table field can be empty. If the table field is filled, the field's value must be present in the reference table. For example, the reference from Implemented Software Components to Addresses is mandatory unless empty. As a result, the address on the Implemented Software Components table is optional.
For table sharing, this implies that if the Implemented Software Components table is shared, you can share the address. However, if the address table is not shared, you must leave the address in the Implemented Software Components table empty. Note that the decision not to share the address table can not only be made based on the table references. Often, functionality exists that requires you to fill a field.
 - **Not Mandatory:** The table field can contain a value that is present in the reference table, but the table field can also contain another value.
If the reference mode is not mandatory, you need not share the referenced table if the parent table is shared..
- **Type of Reference:**
 - **Hard Reference:** A reference from one table to another table defined in the data dictionary.
 - **Soft Reference:** A reference from one table to another table that is embedded in a program script or library.

If data is shared, all referenced data might also have to be shared. This can depend on whether the data is mandatory, mandatory unless empty, or non-mandatory. Referenced tables are important in the referential integrity of data.

Where tables are logically linked, the referenced table also must be linked as well, particularly in case of mandatory data. In case of non-mandatory data, fields can have different values in different companies as long as these values exist in the company that references the values. As a result, the main table can be shared using distributed transactions. The referenced table can be company-specific or can be replicated.

Example: General Item Data (tcibd001) is shared by more than one company. Many referenced fields exist in the item file, such as item groups and unit data.

If the item file is logically linked the exact same values for all mandatory referenced fields must exist in both companies, such as item groups and so on. These referenced tables are usually logically linked as well. If

non-mandatory fields are not used, in other words, product type, the referenced tables do not must be logically linked.

If a table is replicated, referenced fields can have various values, as long as these values exist in the company that references the values. Then, during the replication, the values change. In the case of non-mandatory fields, you are not required to have the referenced data shared if the field in the table is not used.

Example: If the General Item Data (tcibd001) file is replicated, programs must be able to reference all mandatory fields, in other words, item groups, in the company that uses the data. The value of the mandatory fields does not have to be the same in both companies, as long as the value being referenced exists in the company referencing it. If non-mandatory fields are not used, in other words, product types, you do not have to replicate the referenced tables.

In some cases, many levels of references will exist. The references can be far-reaching and complex. For example, the item file references tables such as item groups and other MCS tables, as well as engineering data, bills of material, routings, and cost accounting data. For these reasons, and because tables can be shared in various ways in each implementation, table references must be investigated in detail for each implementation.

Networks

Networks and Client/Server scenarios influence the possibilities for data sharing. The performance of data transaction is different for both types of network. As a result, the type of network has a great influence on the usability of most of the data sharing methods. Secondly, some of the data sharing methods may or may not be possible depending on the client/server scenario that was chosen.

In each scenario, a distinction can be made between the application (including bshell), the database driver and the database. These three can be connected by means of a network. Two main types can be distinguished: Local Area Network (LAN) and Wide Area Network (WAN).

An LAN is a network of data lines in a physical location. The speed of data transactions is extremely good. A WAN is made up in most cases of rented cables that run over long distances. The capacity and the length of the cable restrict the volume and speed of data transfer. A WAN is generally more sensitive to breakdowns, for example, due to physical damage.

In general, if a WAN network is used, Infor does not recommend that you perform synchronous transaction processing. In regard to asynchronous replication of data, you can use both types of network.

Multiple data servers

In the case of multiple data servers, Infor does not recommend logical linking of tables across data servers. However, group company functionality requires that some tables be shared.

A primary company is designated to each data server, other than the server on which the group company resides, which provides group company functionality without requiring tables to be logically linked across data servers.

In all group company structures, the tables that are usually logically linked to the group company are logically linked to the primary company. On the group company's server, the tables are logically linked to the group company. Replication of data between the group company data server and all other data servers is required.

Chapter 3: Specifying Tables to Be Shared

This chapter describes some attention points for the specification of the tables to be shared. This chapter does not discuss the exact tables to be shared. That knowledge is kept in the Table Sharing Modeler with the predefined table sets and the table references, which are discussed in the following chapters.

The starting point for table sharing is the required multicompany setup. This setup already determines the first tables to be shared and is discussed first.

In addition, table sharing is determined by the required functionality, which is described next.

Finally, this chapter provides some general guidelines for table sharing.

Multicompany setup

For the multicompany setup, you must make decisions on these topics:

- EM company
- Master data company
- Multicompany structure, which can be:
 - Single Logistic – Single Financial
 - Single Logistic – Multi Financial
 - Multi Logistic – Single Financial
 - Multi Logistic – Multi Financial
- Archive companies

EM company

One company must contain the Enterprise Modeling Data (the EM models). You can set this up in a company separate from the operational data or in one of the regular companies. This company can be of any type. EM models can be made available for various (operational) companies. You cannot achieve this by means of Table Sharing, but by means of the **Central Company to Store Enterprise Modeler Data (tgbrg0100s000)** session. In this session, the user can specify the EM company in which all the EM models are stored.

Master data company

You can maintain all the master data, such as items, business partners, central purchase contracts, general ledger and related data in one company and share this data with the other companies. This master data company can be one of the operational companies, but you can also assign a separate company only to be used for the master data.

The advantages of having a separate master data company are:

- Clarity: Having a single company as master data company is clear for all users.
- Authorization: In general, only a few people in an enterprise can maintain the master data and, particularly for this maintenance, the authorization is important. If one dedicated master data company exists, you can use the company authorization to maintain this authorization very easily.

Multicompany structure

These multicompany structures exist:

- Single Logistic – Single Financial
- Single Logistic – Multi Financial
- Multi Logistic – Single Financial
- Multi Logistic – Multi Financial

In a Single Logistic – Single Financial setup with one company of type Both, no table sharing is required. In all other setups, and therefore including a single logistic–single finance setup with two different companies, tables must be shared. The tables that must be shared are listed later in this document. This chapter describes only some general principles.

In a multicompany setup, some common tables from the Common (tc) module, such as the Company Data (com) and Enterprise Modeling Management (emm) tables, must be shared between the various companies, while others are optional, depending on the required functionality. Which tables are part of the content of the Table Sharing Modeler is described in [Using Predefined Table Sets](#) on page 22.

In case of multiple finance companies, some financial tables must also be shared between the various financial companies. The other financial tables depend on the required functionality.

In case of multiple logistic companies, sharing the logistic tables is optional.

Archive companies

In case of archive companies, the table sharing in the archive companies must be exactly the same as the table sharing in the live companies.

In addition, these tables must be shared between the live companies and the archive companies:

- General Company (tccom000)
- Text Windows (tttxt004)
- Text Groups (tttxt005)

Required functionality

If the decisions with regard to the EM company and the multicompany setup are made, specific functional requirements are analyzed to finalize the table sharing. Related to the required functionality, you must share a set of tables. For example, to have central purchase contracts, at least the purchase contracts and the purchase contract lines must be shared. In addition, referenced data such as the items and the business partners must be shared, unless, as described previously, the reference mode permits the data to remain empty.

For the most common sharing functionalities, the required tables to be shared are described. More detailed information about the tables is available in [Using Predefined Table Sets](#) on page 22. For each functional requirement, a table set is created in which the tables are specified that must be shared for this requirement.

Maximum sharing

In addition to table sets for functional requirements, for each package, table sets are specified that contain all tables in that package that can be shared. These table sets are called maximum table sets. Note that tables from that package that are not included in the maximum table set cannot be shared.

If you share the tables of a maximum table set, you must also use the functionality of all underlying table sets. Furthermore, you must also set the parameter settings of these underlying table sets. For example, if all the tables of the maximum table set for Financials, R14900, are shared, all functionality from table sets R10000 through R14900 is assumed to be implemented.

Note: Some tables can be shared, but are not recommended to be shared or can only be shared in certain scenarios. See Maximum table sharing sets in Predefined table sets.

General guidelines

For table sharing, some general guidelines apply. This section lists these guidelines in detail.

- In a logistic company, no financial tables must be set up, and in a financial company, no logistic tables must be set up, so there is also no need to share logistic tables to a financial company and vice versa.
- If table sharing is used to prevent (explosive) data growth, ensure that Dynamic Company Switch is enabled for all users.
- Transactional data, such as sales and purchase orders, cannot be shared between two companies.
- Tables that are not included in the maximum table sets cannot be shared.
- If a table is shared, all referenced tables must be shared too, unless:
 - The reference mode is Mandatory Unless Empty or Non-Mandatory. In this case, you can leave the field empty, and you must leave this field empty if the referenced table is not shared. For example, Departments (tcmcs065) is an attribute of Employees (tccom001) and the reference mode is mandatory unless empty. Therefore, if the employees are shared and the departments are not shared, the department field on the employee must be left empty on all employees. This affects functionality:

as a result, all functionality on employees that requires the department of the employee, for example back flushing, will not be supported.

- The referenced table is kept synchronized in a way other than by means of replication or manual procedures.

In general, sharing implies that the data can be entered, maintained, and used in all companies that share this table. However, this situation is not always available:

- In some cases, the use is restricted to a particular company. For example, sales orders for a particular sales office can only be created and maintained in the operational company of that sales office.
- In other cases, the creation of data is restricted, for example to a financial company or a logistic company or depending on a parameter in a specific company. Tax codes of type investment charge in a particular country for example, can only be entered in a company of type Financial or Both if the corresponding parameter in the ACP parameters is switched on. This tax code can also only be used in Financials.

Chapter 4: Using the Table Sharing Modeler

You can use the Table Sharing Modeler tool to specify and analyze table sharing. This chapter describes the use of the Table Sharing Modeler to set up table sharing. More information is available in the online Help of the Table Sharing Modeler.

Before you use the Table Sharing Modeler, you must first create some master data, as described in the following section.

Next, you must create table sets to specify the actual table sharing.

Preparing master data for the Table Sharing Modeler

In the Table Sharing Modeler, this master data must be available:

- **Hard Table References:** You can generate the Hard Table References from the **Table Definitions (tltsm0201m000)** session. This session takes into account the customizations.
- **Soft Table References:** Two sources exist for the soft references:
 - **Soft references of the standard VRC:** Soft references as delivered to the customer. These soft references are delivered as content of the Table References (tltsm010) table.
 - **Soft references of the customization VRC:** The software engineer responsible for the customizations must add these soft references by means of the **Table References (tltsm0110m000)** session.
- **Predefined Table Sets:** You can use these table sets when you set up table sharing. The predefined table sets are discussed in more detail later in this document.

The soft references and predefined table sets are part of the LN software. This data is imported if you install the installable unit LN Demo Data.

In addition, you must set up this data:

- **Table Sharing Parameters (tltsm0100m000)**
- **Package Combinations (tltsm0105m000)**
- More information is available in the Online Help of these sessions.

To import predefined table sharing data

The predefined data delivered by Infor (Soft Table References and Table Sets) can be delivered to the customer as additional files, linked to a PMC solution. When installing such a PMC solution, the following additional files will be copied to the customer's system at a pre-specified directory:

- bgentltsm010000.S
- bgentltsm100000.S
- bgentltsm110000.S

Caution: Do not move or replace these files.

You can import these files into the Table Sharing Modeler from the **Import Table Sharing Content (tltsm2200m000)** session. In this session, you must first specify the source Package VRC. However, if you run this session within a tenant, in a multi-tenant environment, it is not required to specify a VRC, but you must specify the package combination from which to read the data.

Depending on the ERP Enterprise version, specify this data:

	10.5.2	10.5.1	10.5	10.4.2	10.4.1	10.4	10.3	10.2
Version:	B61	B61	B61	B61	B61	B61D	B61D	B61D
Release:	20	18	16	14	12	10	A9	A8
Customer Extension:	<empty>	<empty>	<empty>	<empty>	<empty>	<empty>	<empty>	<empty>

For 10.6 and later versions, the version, release, and customer extension is determined automatically by the package combination that you specified.

Next, specify the target Package VRC, which is the VRC in which the Table Sharing Modeler is used in the customer's configuration.

Subsequently, you can import the content of the additional files into the Table Sharing Modeler. This implies that the VRC of this data is overwritten with the customer's VRC and stored in table tltsm010. Table Set data is stored in tltsm100 and tltsm110. Data that is present already is not overwritten.

Using table sets and table sharing sets

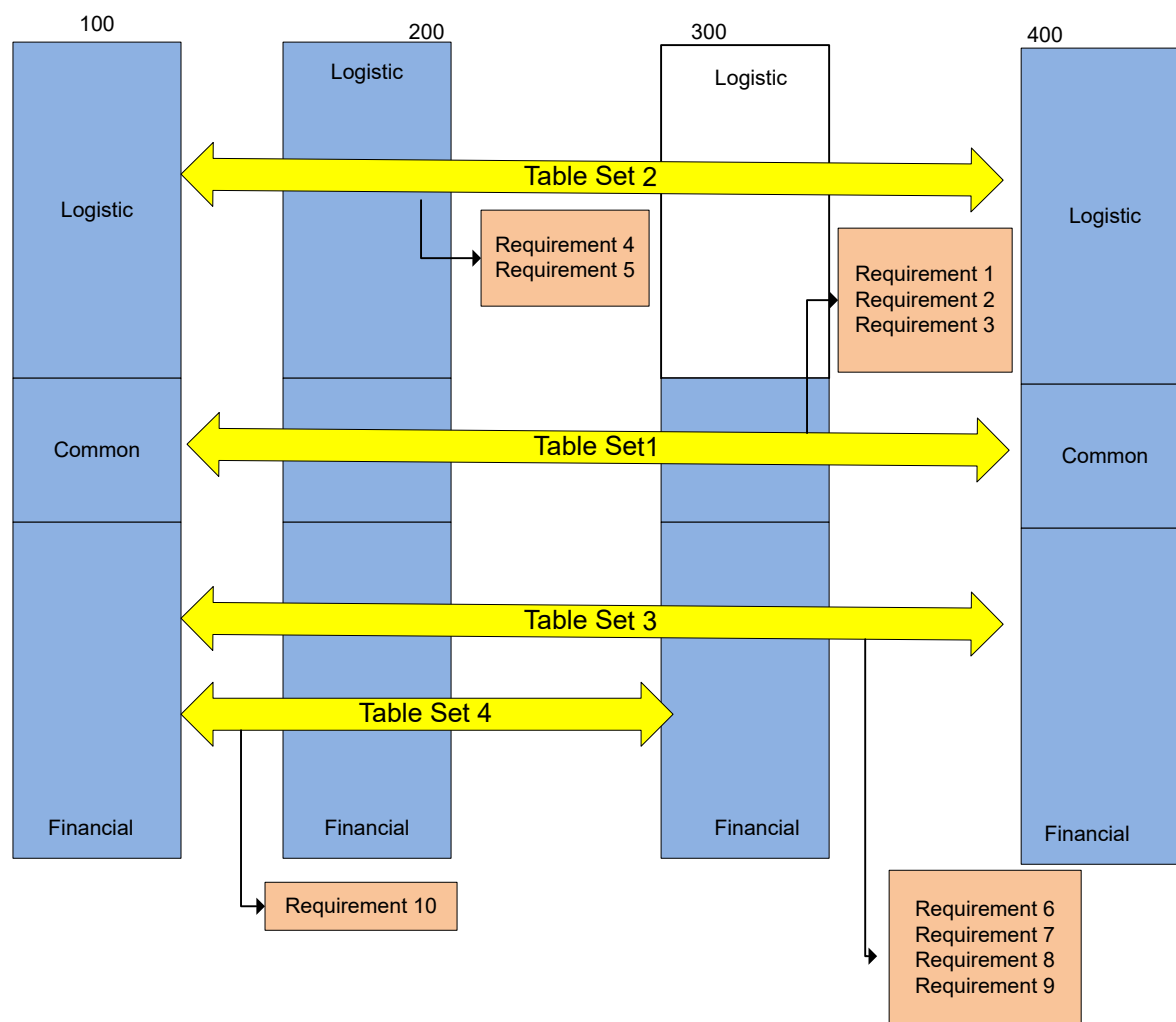
To set up table sharing, table sets and table sharing sets are used.

A table set is a set of tables that are shared. For example, a table set may contain all tables that must be shared in case of a group company.

A table sharing set is a proposed table sharing configuration. A table sharing set contains a collection of table sets. For each of these sets, the table sharing set defines exactly which logical companies are linked to which physical companies.

You can use table sets in various ways. For each requirement, you can use a separate table and, in a table sharing set, you can use these table sets to link the tables from the logical to the physical companies. You can also create one or more larger table sets that contain the tables for several requirements.

The following figure shows an example of this type of setup:



In this example, company 100 is the master data company and all tables are logically linked to this company. Four table sets are created:

- Table Set 1 contains all common tables related to requirements 1 to 3. Tables of this table set are shared between all companies.
- Table Set 2 all logistical tables related to the logistical requirements 4 and 5. Tables of this table set are shared between companies of type Logistic and of type Both.
- Table Set 3 contains all financial tables related to requirements 6-9. Tables of this table set are shared between companies of type Financial and of type Both.

- Table Set 4 contains all financial tables related to requirement 10, which is related to functionality which is not applicable for financial company 400. Tables of this table set are shared between companies of type Financial and of type Both, except with company 400.

To create the table sets, first the most important tables will be added which have to be shared and then, during the analysis phase referenced tables will be added. You can carry out this analysis by table set, but also by table sharing set. The advantage of this method is that tables that are part of one table set, for example, the common table set 1, are taken directly into account when analyzing the tables from the other table sets, for example, table set 2.

In the first instance, a table set contains the main tables to be shared. Therefore, for example, the table set for central items, contains the general item table (tcibd001). When you analyze this table, the table sharing exception session shows all tables with a reference to this general item table, which is a very large list. A good method to analyze this list, is to start with the tables from the table set (in this example tcibd001) and look at all the tables which are directly referenced from tcibd001 and add these tables one by one or 'accept' the reference, which implies that the field will remain empty.

Two methods are available to specify the table sets. You can first select the minimal table sets applicable and add tables to them, or you can start with the maximum table set and then remove tables from it.

Updating a table sharing configuration to the next package combination

If a multicompany environment is upgraded to a next package combination, the table sharing configuration must also be updated.

If your LN installation resides on a tenant in a multicompany cloud environment, you must manually upgrade your table sharing configuration before you upgrade the companies to the next package combination. This is to ensure that all table sharing requirements of the new functionality are included in the upgraded table sharing configuration.

The manual upgrade procedure includes these steps:

- 1 Manually importing predefined table sets. See [To import predefined table sharing data](#) on page 18.
- 2 Manually initiating the generation of table sharing sets based on the package combinations. See the Online Help of the **Table Sharing Sets (tltsm1115m000)** session for details.
- 3 Setting the table sharing set to **Active in Next Package Combination**.

This means that the table sets of the table sharing set are copied to a new version and linked to the next package combination. After verification and, if required, correction, the table sharing set is approved and set to **Active in Next Package Combination**. See the Online Help of the **Table Sharing Sets (tltsm1115m000)** session for details.

Consequences of automatic update of table sharing configuration

If not updated manually, the table sharing configuration is automatically updated based on the current table sharing configuration. The updated configuration can be incomplete, because tables that were new in previous package combinations but that have not been used, are skipped in the automatic update.

Chapter 5: Using Predefined Table Sets

This chapter discusses where required some specific table sets in more detail. Note that the objective of this document is not to describe the required functionality, but only the consequences for table sharing. More information about the required functionality can be found in other documents about multicompany functionality in general or other documents focusing on a particular domain.

Available table sets

In LN, content is delivered using *table sets*. A predefined table set contains a set of tables that must be shared to achieve a specified functionality.

Numbering of table sets

The numbering of the predefined table sets is as follows:

Rxxxyyaa

- R: Requirement
- xxx: Number of the table sharing requirement.
- yy: Number that indicates the type of table set. 00 means that only the key tables are part of the table set, and therefore the user must generate the referenced tables. For these types of table sets, the description of the table set ends with (KT). 10 means that all referenced tables, that can be shared, are included in the table set. This last table set is not delivered.
- aa: Version number

The following overview shows the ordering of the table sets:

- 000 – 049 General Multicompany Setup
- 050 – 099 Central Common Data
- 100 – 149 Financial
- 150 – 199 Invoicing
- 200 – 239 Purchasing
- 240 – 279 Sales
- 280 – 299 General Order Management
- 300 – 349 Manufacturing

- 350 – 399 Enterprise Planning
- 400 – 449 Warehousing
- 450 – 499 Freight Management
- 500 – 549 Service
- 550 – 599 Project
- 600 – 649 Quality Management
- 650 – 699 ODM
- 700 – 749 People
- 750 Tools
- 800 – 899 Localizations
- 999 Maximum set

These tables contain references to several other tables. If all these referenced tables are shared too, the following tables must be shared:

Table	Description
tcccp010	Calendar Codes
tccom000	Implemented Software Components (Companies)
tccom130	Addresses
tccom135	Address Formats
tccom740	Country Tax Provider Register
tcemm100	Time Zones
tcmcs004	Routes
tcmcs010	Countries
tcmcs046	Languages
tcmcs143	States/Provinces
tcmcs180	Country Groups
tttxt001	Language Independent Text Data

Predefined table sets

The table displays the predefined table sets that are available in LN. The New/Updated column shows the table sets that are new or have been updated in the current LN release. The current LN release is displayed in the "Publication Information" section of this guide.

Table Set	Version	Description	New, Updated or Expired
R00100	03	Central EM company (KT)	Expired
R00200	09	General Multi-Company (KT)	Updated

Table Set	Version	Description	New, Updated or Expired
R00300	04	SL-SF GLD (KT)	Updated
R00400	05	SL-SF ACR (KT)	Updated
R00500	06	SL-SF ACP (KT)	
R00600	01	SL-SF Fixed Asset Mgt (KT)	
R00700	07	SL-SF SLI (KT)	
R00800	02	SL-SF Cash Management (KT)	Expired
R00900	01	Common Cur Initialization (KT)	
R05000	01	Ctr First Free Numbers (KT)	
R05100	01	Central Departments (KT)	
R05200	02	Central Calendar Setup (KT)	
R05300	03	Central Actual Calendars (KT)	
R05400	01	Central Warehouses (KT)	
R05500	01	Central Items (KT)	
R05600	10	Central Business Partners (KT)	Updated
R05700	02	Ctr Credit Limit Check (KT)	
R05800	10	Central Tax Set-up (KT)	Updated
R05900	01	Ctr Terms and Conditions (KT)	
R06000	01	Ctr Landed Costs Setup (KT)	
R06100	01	Ctr Material Pricing Master	
R06200	01	Ctr Mat Pr Material Content	
R06300	01	Ctr Document Output Mgt Master	
R06400	01	Ctr Global Trade Master Data	
R06500	01	Central Global Trade Licenses	
R06600	01	Central Letter of Credit	
R06700	01	Central Bank Guarantees	New
R06800	01	Central Embargoes and Boycotts	New
R06900	01	Ctr Classification Schemes	New
R09900	18	Max Sharing Common Data (KT)	Updated
R10000	08	SL-MF Finance (KT)	
R10100	04	Ctr Integration Mapping (KT)	
R10200	12	Ctr Chart of Accounts (KT)	Updated

Table Set	Version	Description	New, Updated or Expired
R10300	12	Financial Group Company (KT)	Updated
R10400	05	Ctr Integration Proc (KT)	
R10500	06	Multicompany PI Matching (KT)	
R10600	05	Central Cash Management (KT)	
R10700	01	MC Fixed Asset Transfer (KT)	
R10800	02	Ctr Reconciliation Trans. (KT)	
R10900	02	Intergroup Transactions (KT)	Expired
R11000	04	Ctr Financial Statements (KT)	
R11100	02	Central Tax Declaration (KT)	
R11200	01	Ctr Transaction Entry (KT)	
R11300	01	Ctr St Cur Reporting (KT)	
R11400	02	Ctr Transaction Types (KT)	
R11500	01	Ctr Account Match Setup (KT)	
R11600	01	Ctr Budget Master Data (KT)	
R11700	03	Ctr A/P Header Documents (KT)	Updated
R11800	02	Ctr A/R Header Documents (KT)	
R11900	01	Central Payment Views (KT)	
R12000	01	Central Receipt Views (KT)	
R12100	02	Central Reminder Diary Notes	
R12200	01	Central Cross Validation Rules	
R12300	01	Central Credit Control	
R12400	01	Central Aging Analysis	
R12500	02	Central Received Invoices	
R12600	01	Central External Invoices	New
R14900	24	Max Sharing Financials (KT)	Updated
R15000	07	Central Invoicing (KT)	
R15100	01	Ctr Master Data Revenue Recogn	New
R15200	02	Central Revenue Recognition	New
R19900	10	Max Sharing Ctr Invoicing (KT)	Updated
R20000	01	Ctr Purchase Contracts (KT)	
R24000	03	Ctr Sales Contracts (KT)	Updated

Table Set	Version	Description	New, Updated or Expired
R28000	01	Central Product Catalogs (KT)	
R28100	03	Central Pricing (KT)	Updated
R28200	04	Central EDI Setup (KT)	Updated
R28300	01	Ctr Pur. and Sales Stat. (KT)	
R29900	10	Max Sharing Order Mgt (KT)	Updated
R30000	02	Central Bills-of-Material (KT)	
R30100	01	Central Engineering (KT)	
R30200	01	Ctr. Configuration Models	
R30300	01	Central Production BOM	
R34900	13	Max Sharing Manufacturing (KT)	Updated
R44900	07	Max Sharing Warehousing (KT)	
R45000	02	Multi-Company Freight Mgt (KT)	
R49900	03	Max Sharing Freight Mgt (KT)	
R50000	03	Ctr Service Resources (KT)	
R50100	05	Ctr Service Install Base (KT)	Updated
R50200	04	Ctr Service Reference Act (KT)	
R50300	02	Ctr Service Insp Setup (KT)	
R50400	01	Ctr Prev Maint Setup (KT)	
R50500	01	Ctr Rental Equipment	New
R54900	12	Max Sharing Service (KT)	Updated
R55000	01	Ctr Project Structures (KT)	
R55100	02	Central Project Templates (KT)	Expired
R55200	01	Ctr St Project Surcharges (KT)	
R55300	03	Ctr Project Resource Lib (KT)	
R55400	01	Std Project Revenues (KT)	
R55500	01	Intercompany Project Delivery	
R59900	07	Max Sharing Project (KT)	
R60000	07	Ctr QC Master Data (KT)	
R60100	01	Central Sampling Plans (KT)	
R60200	01	Central FMEA Master Data	
R64900	11	Max Sharing Qual Mgt (KT)	Updated

Table Set	Version	Description	New, Updated or Expired
R65000	03	Ctr Document Management (KT)	
R70000	04	Central Employees (KT)	
R70100	01	Central Hours Budget (KT)	
R70200	04	Central Hours History (KT)	
R70300	01	Ctr Hours and Expenses Entry	
R70400	01	Central Time Management	New
R74900	07	Max Sharing People	Updated
R75000	01	Central Job Management	New
R80000	04	Ctr Localization Data	Updated
R80100	01	Malaysia Ctr Localization Data	New
R80200	01	Spain Ctr Localization Data	New
R80300	01	Mexico Ctr Localization Data	New
R80400	01	China Ctr Localization Data	New
R80500	01	Chile Ctr Localization Data	New
R80600	01	Turkey Ctr Localization Data	New
R80700	01	Romania Ctr Localization Data	New
R80800	01	Hungary Ctr Localization Data	New
R80900	01	Peru Ctr Localization Data	New
R81000	01	Angola Ctr Localization Data	New
R81100	03	Multiple Indian Companies	New
R81200	03	India Ctr Master Data	New
R81300	01	Central Italian Tax Connector	New
R81400	01	Multiple Indonesian Companies	New
R81500	01	Indonesia Ctr Master Data	New
R81600	01	Multiple Colombian Companies	New
R99900	20	Maximum Sharing (KT)	Updated

Maximum table sharing sets

The maximum sharing table sets contain all tables that are allowed to be shared. This does not mean that they must be shared. This always depends on the required functionality. There are also tables that can be shared, but are not recommended to be shared or can only be shared in certain scenarios.

The following table displays these tables. The Remark column explains why and when they are not recommended to be shared.

Note: This list is not complete.

Table	Description	Remark
tcibd200	Item Ordering	This table can only be shared if the sites concept is activated.
tcibd201	Item Ordering Defaults	This table can only be shared if the sites concept is activated.
tfacp006	Purchase Invoice Authorizations	This table can only be shared between companies that use the same local currency.
tiipd001	Item Production Data	This table can only be shared if the sites concept is not activated.

Various tables are recommended not to be shared because sharing is not mandatory and has a negative impact on performance. These tables are described in the following table.

Table	Description	Remark
tfgld465	Logged Integration Elements	Sharing this table has a negative impact on the performance.
tfgld482	Integration Transactions	Sharing this table has a negative impact on the performance.
tfgld495	Reconciliation Data	Sharing this table has a negative impact on the performance.

Mandatory sharing of new and existing tables combined

Various new tables have been introduced in the current release. The sharing of some of the new tables depends on the current sharing.

This means, that if table A is shared currently, you must also share the new table. Please refer to the Table Sharing section of the release notes of the current release for details.

General concept settings identical throughout multicompany environment

The settings of general concepts such as VMI, Landed Costs, or Ownership External must be identical for all companies of the multicompany environment. This is because these concepts affect the field behavior of various tables that are shared across the multicompany environment.

General concepts are implemented in the Concepts (Logistics) and Concept (Financial) tabs of the **Implemented Software Components (tccom0100s000)** session.

Relations between table sets

Several requirements can only be fulfilled if also another requirement is fulfilled. For example, central purchase invoice matching is only possible between companies that belong to the same financial group company. This means that the tables to be shared for central purchase invoice matching must contain the tables to be shared for a financial group company. Looking at the table sets, the Central Purchase Invoice Matching (R10500) table set does not contain the tables from the table set for a financial group company (R10300).

However, this document describes the relations between table sets, where that table set R10500 (Central Purchase Invoice Matching) assumes that the tables from R10300 (Financial Group company) are also shared. This makes the table sets much more readable, because only the tables specific for this requirement are mentioned.

Table sets that contain the maximum sharing (all shareable tables) are not mentioned with respect to the relations between table sets.

General multicompany setup

In each multicompany setup, some tables must be shared between all companies (table set R00200) and between a logistic and a financial company (table sets R00300 – R00700). These table sets only contain common tables. The common tables are part of the Common (tc) package.

R00200 General Multicompany (KT)

This table set contains all tables that must be shared between all companies (except for the central EM company) belonging to the same multicompany setup.

R00300 SL-SF General Ledger (KT)

This table set contains all common tables that must be shared between the logistic and the financial companies when the General Ledger module within Financials will be used.

R00400 SL-SF Accounts Receivable (KT)

This table set contains all common tables that must be shared between the logistic and the financial companies when the Accounts Receivable module within Financials will be used.

R00500 SL-SF Accounts Payable (KT)

This table set contains all common tables that must be shared between the logistic and the financial companies when the Accounts Payable module in Financials is used.

R00600 SL-SF Fixed Asset Management (KT)

This table set contains all common tables that must be shared between the logistic and the financial companies when the Fixed Asset Management module within Financials will be used.

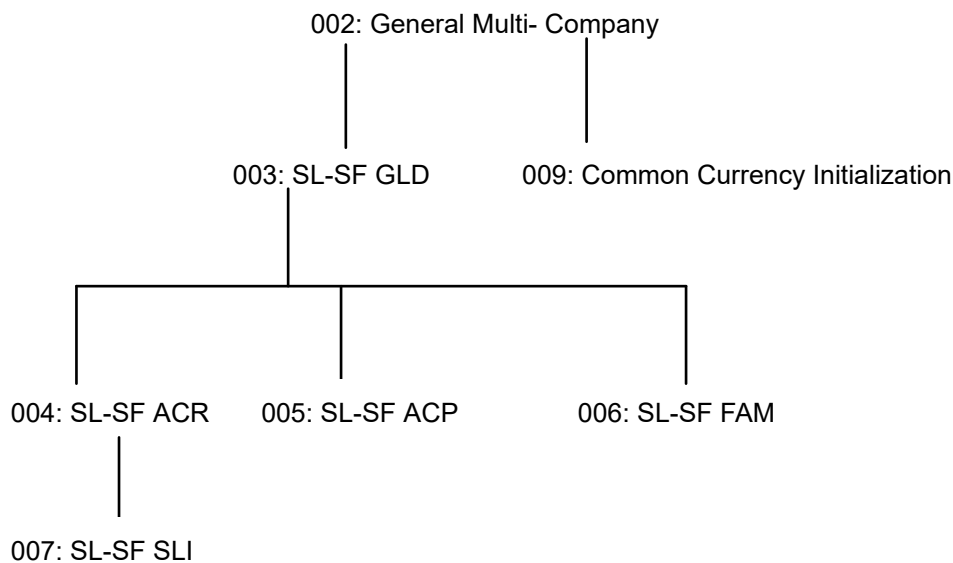
R00700 SL-SF Central Invoicing (KT)

This table set contains all common tables that must be shared between the logistic and the financial companies when the Invoicing module within a financial company will be used.

R00900 Common Currency Initialization

To change a company's currency settings, for example the currencies or the currency system, use Currency Initialization. For a proper working of this module, share tables from this table set across all companies that are impacted by this change. This sharing is difficult to change, even after the changes have been carried out. Therefore, it is recommended to share these tables between all companies in a multicompany setup.

If you use archiving, these tables must be shared between the live companies and the archiving companies. Otherwise, no archiving is carried out in the time between the currency changes in the live companies and the archiving companies.

Relations between table sets

Central common data

Depending on the required functionality, and in addition to the tables mentioned in the previous section, several other common tables must be or can be shared. These tables are described in this section.

R05000 Central First Free Numbers (KT)

Table set R05000 contains all tables that must be shared to achieve central first free numbering. In a central first free number scenario, the definition and registration of first free numbers are handled centrally and apply to all companies (logistic and financial).

Using Central First Free Numbering, the customer can generate unique IDs of all objects such as items, business partners, orders, and contracts across all its companies.

Central First Free Numbers is required for sharing of all objects such as items or purchase contracts across companies. By selecting different number groups per company, sequential numbering of for example sales orders per company can still be achieved.

R05100 Central Departments (KT)

This table set contains all the tables that must be shared to have central departments. Central departments will achieve central numbering of the departments, but it is also required for several other requirements as central employees and the sharing of the financial business partner roles.

Although shared departments are visible in all companies, they are linked to an operational company and they can also only be linked to transactional data into that operational company. For example, if a sales office is linked to operational company 100, you cannot create a sales order in logistic company 200 for this sales office. Moreover, each department must be entered in its operational company, so if a sales office is entered in company 100, company 100 will be the operational company of this department and sales orders for this department can only be created and maintained in this company.

R05200 Central Calendar Setup (KT)

This table set contains the basic data needed to generate calendars. By sharing these tables, common definitions and working times across companies can be achieved, but the calendars can differ per company.

R05300 Central Actual Calendars (KT)

All calendar management (operational calendar data) is shared, which means that the calendars are available in all companies. Still in each company different calendars can be used.

R05400 Central Warehouses (KT)

This table set contains all the tables that must be shared to have central warehouses.

Although shared warehouses are visible in all companies, they are linked to an operational company and they can also only be linked to transactional data into that operational company. For example, if a warehouse is linked to operational company 100, you cannot create a warehouse order in logistic company 200 for this warehouse. Moreover, each warehouse needs to be entered in its operational company, so if a warehouse is entered in company 100, company 100 will be the operational company of this warehouse and warehouse orders for this warehouse can only be created and maintained in this company.

R05500 Central Items (KT)

This table set includes the tables that must be shared to maintain items centrally. When items are shared, the date-effective supply sources of the items must also be shared among the companies involved.

However, if you require different supply sources for individual companies, you must not share the date-effective supply sources. Supply sources are defined in the **Default Supply Source** field in the **Items (tcibd0501m000)** session. Date-effective sources are defined using the **Source by Date** option in the **Items (tcibd0501m000)** session.

Note:

- If the referenced tables are also shared, the Business Partner tables are shared as well. This is because of the reference from the manufacturer to the buy-from business partner. Sharing the Business Partner tables because of centralized items can be avoided by not using manufacturers for items or by not using business partners for manufacturers.
- When using the Table Sharing Modeler, this can be achieved by 'Accepting' this reference between the manufacturer and the buy-from business partner in the **Table Sharing Exceptions (tltsm2100m000)** session. All other references to the business partner are removed.
- In case of project items, the project table (tcmcs052) must be shared as well.
- When items are shared and the Project package is used, the Project Resources (R55300) table set needs to be shared between the logistic companies.
- If Export Licenses are implemented in the Project Pegging Parameters, either the Bill of Material must be shared or the **Detect Export Licensed Item Structure (tcibd0208m000)** session must run in the production company.
- If table tcibd001 is shared and tcibd010 is not, deleting a date-effective supply source for an individual company can cause date-effective supply sources present for other companies to be ignored. This is because the **Date-Effective Item Sources** check box in the **Items (tcibd0501m000)** session is cleared for all companies if the supply source is deleted in one company. Therefore, once created, a date effective item source should not be deleted.

Date-effective supply source ignored

Item X with default supply source Job Shop is shared among companies 100, 200, and 300.

In company 200, the default supply source is replaced with date-effective supply source Purchase.

In company 300, it is replaced with date-effective supply source Subcontract. Next, date-effective supply source Subcontract is removed in company 300. This causes the **Date-Effective Item Sources** check box in the **Items (tcibd0501m000)** session to be cleared for all companies.

This has no consequences for companies 100 and 300, but for company 200, the default supply source Job Shop is activated and the date-effective supply source Purchase is ignored.

R05600 Central Business Partners (KT)

This table set contains all tables that must be shared to have central Business Partners. This table set also contains all business partner roles, but it is also possible to share only a subset of the roles.

Note:

- In the buy-from role, a purchase office can be specified and in the sold-to role, a sales office can be specified. This purchase and sales office are the departments as specified in TD and these departments cannot be shared. These departments are used to default the office on a sales or a purchase order. If the department cannot be used in the current logistic company, it is considered to be blank on the BP role and the defaulting logic continues.
- Some financial business partner roles (Invoice-from and Invoice-to) include soft references to financial tables. Data from these tables is retrieved taking into account the correct financial company. As a result,

there is no need to share these tables to a purely logistic company. You can accept these messages in the **Table Sharing Exceptions (tltsm2100m000)** session.

R05700 Central Credit Limit Check (KT)

This table set contains the tables which must be shared to have a central credit limit check across companies.

R05800 Central Tax Setup (KT)

In order to have a central tax setup, tables from this table set must be shared. This table set includes the following:

- **Central Tax handling:** To support central tax handling, the tax handling table (tctax038) must be shared. Still the tax handling needs to be specified per financial company, so the main advantage of having the tax handling centrally is that the tax handling can be maintained and viewed from a single company.
- **Central Tax Test:** By having a central Tax Test setup, a central set of tax tests is available for all companies.
- **Central Tax Exception Modeling:** The Tax Exception Modeling tables must be shared between the companies of the company set for which these exceptions are valid.
- **Central Income Tax & Social Contribution:** By sharing the tables for Income Tax and Social Contribution, the master data can be maintained and set up from a single company.
- **Central Intrastat and ESL:** The Intrastat records are logged in the logistic company. Intrastat is reported by financial company. In order to achieve this (without having to combine separate reports, the Intrastat tables must be shared between the logistic companies, related to one financial company. If the ESL tables are shared from one company, ESL can be reported for all companies between which these tables are shared.

Note:

The tables related to the tax provider (Tax Provider Parameters – tctax600, Product Category – tctax601, Product Category Tax matrix – tctax602 and GEO Codes by Address Data – tctax605) can be shared only between financial companies using the same tax provider with the same tax provider setup.

R05900 Central Terms & Conditions

Multiple companies (logistic companies as well as financial companies) can share the Terms and Conditions. However, it is not required that all these companies share the Terms and Conditions.

If you share the Terms and Conditions table, you must also share all referenced tables, except for the departments and the warehouses. LN always retrieves departments and warehouses by using the operational company.

Because you can set up terms and conditions by warehouse (or group of warehouses) and departments, you can specify that certain terms and conditions are only valid for a specified part of the organization.

R06000 Central Landed Costs Set-up (KT)

If the tables of this table set are shared, the landed costs can be set up and maintained in one company, but also used in the other companies.

R06100 Central Material Pricing Master Data

If material prices need to be the same between different companies, the tables from this table set must be shared.

R06200 Central Material Pricing Content

In the material pricing functionality, prices depend on the content of a specific material (for example, copper) in an end product. Therefore, based on the bill of material of the end product, the quantity of this material in the end product will be determined and stored. These amounts can also be shared between different companies. To do so, the tables of this table set must be shared.

In addition, the Bills-of-Materials must be the same in all (logistic) companies. Therefore, the tables from table set R30000: Central Bills-of-Material must be shared between these companies.

Note:

Ctr. Material Pricing Material Content is supported only if the following concepts are not used in any of the logistic companies involved:

- Assembly Control
- Product Configurator (PCF)
- PCM Configurator Integration

R06300 Central Document Management Master Data

These tables must be shared for a central setup of Document Output Management master data.

R06400 Ctr Global Trade Master Data

These tables must be shared for a central setup of master data for global trade.

R06500 Ctr Global Trade Licenses

These tables must be shared to use central global trade licenses.

R06600 Ctr Letter of Credit

LN supports the use of letters of credit in sales or purchase transactions between departments in different logistic companies. For this purpose, you must share the tables of this table set among the logistic companies involved.

R06700 Central Bank Guarantees

A bank guarantee can be used by departments in different logistic companies. To support a central bank guarantee, the tables of this table set must be shared between the logistic companies.

R06800 Central Embargoes and Boycotts

To support the setup and the use of embargoes and boycotts across logistic companies, the tables of this table set can be shared among the logistic companies. To use this functionality, the tables from table set R06400 must also be shared.

R06900 Central Classification Schemes

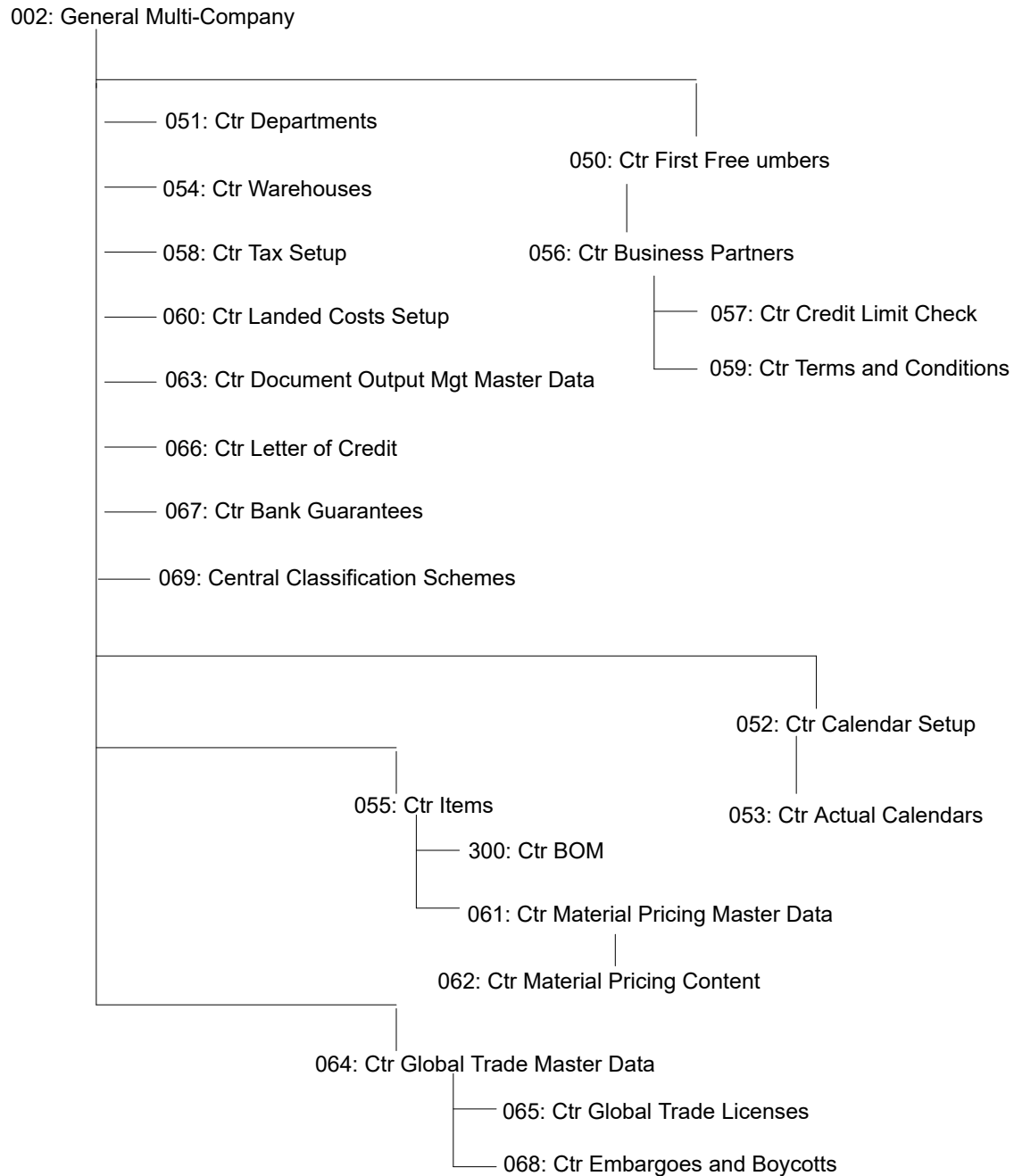
Usually, classification schemes are almost identical across countries. To support central management of classification schemes, the tables of this table set must be shared.

R09900 Maximum Sharing Common Data (KT)

This table set contains all tables from the Common Data package that can be shared. Tables that are not included in this table set cannot be shared.

Note:

- Project Table (tcmcs052): The common project table (tcmcs052), which includes the PCS projects and the TP projects can be shared, but one project can only be managed in one company.
- Labor Rates by Business Partner and Project (tccpl092): If the Project field is used, sharing of this table is not allowed.
- Limits of Income Tax and Social Contribution (tctax017): You can share the tctax017 table only between financial companies that have the same tax IDs and local currencies, because the values of the withholding tax are valid only for a particular tax ID. The tctax017 table stores the limits and actual values for the withholding tax.
- If Effectivity Units (tcuef002) are shared, no cost price per effectivity unit can be specified. Effectivity units have several references to logistic tables, for example, to sourcing strategies. Because unit effectivity is a purely logistic concept, which is not used in Financials, there is no need to share these logistic tables to a purely financial company. Moreover, this is not possible, because these logistic tables are not present in a financial company. The user can accept these messages in the **Table Sharing Exceptions (tltsm2100m000)** session.
- Item Ordering (tcibd200) can be shared only when sites are active.

Relations between table sets

Multiple financial companies

In case of multiple financial companies, depending on the required functionality several financial tables from the Financials (tf) package can or must be shared between these financial companies (central invoicing will be discussed later). These table sets assume that the common tables as described for the General Multicompany setup are also shared between the financial companies.

R10000 SL-MF Financial (KT)

This table set contains the financial tables which must be shared between the financial companies in all cases.

R10100 Central Integration Mapping (KT)

In LN, the mapping scheme must always be centralized, in such a way that the mapping scheme must be shared amongst all financial companies present in a certain environment.

If a different mapping is required for certain financial companies for specific transactions, the particular mapping for that company must be set up by entering the financial company number. That means that the tables within this table set must always be shared between all financial companies that are part of the company table in Enterprise Modeling Management (tceem170).

Note:

- Sharing this table does not imply that an integration mapping scheme is valid for all financial companies. If this is also required, in addition to the tables of this table set, the Chart of Accounts must be set up centrally. Therefore, the tables in table set R10200, must be shared also.
- Document Series by Transaction Type (tfgld017) must not be shared. However, the series used in the mapping scheme (tfgld477) must exist in all financial companies, if document numbering / compression data (mapping scheme maintenance) was not set up by financial company.

R10200 Central Chart of Accounts (KT)

This table set contains all tables that must be shared to achieve a central chart of accounts.

R10300 Financial Group Company (KT)

In Financials, you can group financial companies into a financial group. The transactions created between the companies of a group are referred to as intercompany transactions.

This table set contains the tables to be shared between the financial companies that belong to the same group company.

R10400 Central Integration Processing (KT)

For a central logging of financial integration transactions, the tables as specified in this table set must be shared.

Note: Sharing these tables will negatively affect the performance, therefore these tables should be shared only if absolutely required.

R10500 Multicompany Purchase Invoice Matching (KT)

In a multicompany structure in LN purchase invoice matching is possible in any financial company belonging to the same financial group company. To achieve this, the tables of this table set must be shared between the financial companies that belong to the same financial group company.

This table set must also be implemented if receivable invoices reports (tfacp1432m000) are required across companies.

The tables listed in this table set must be shared for companies for which combined multicompany receivable invoice reports must be produced.

R10600 Central Cash Management (KT)

If you use central Cash Management, payments and receipts can be performed in a group company for all financial companies of the group company. This table set contains the tables to be shared for central Cash Management.

If you use payment schedules or receipt schedules, the Bank Relations (tfcmg001) table must also be shared.

R10700 Multicompany Fixed Asset Transfer (KT)

A fixed asset can be transferred from one financial company to another. To achieve this functionality, the tables in this table set must be shared.

R10800 Central Reconciliation Transactions (KT)

We recommend that you do not share the reconciliation transactions tables for the following reasons:

- Reconciliation functionality does not require the data to be present in one physical company, because reconciliation analysis will mainly if not exclusively occur by financial company.
- Reconciliation transactions tables tend to become very large if reconciliation is required for many areas.

However, if in the chosen setup logging of reconciliation transactions has been switched on for only a limited number of reconciliation groups, reconciliation transactions may be shared. Then, the entire set of tables in this table set must be shared. So, if the table size is not an issue, an advantage may be some performance gain in deleting and archiving logistic data that may be linked to reconciliation transactions in various financial companies, such as purchase orders and service orders.

R11000 Central Financial Statements (KT)

Via central financial statements common definitions of the financial statements can be defined and reports across financial companies can be created, for example, to compare budget versus actual across financial companies. To achieve this, the tables of this table set must be shared.

R11100 Central Tax Declaration (KT)

In Financials, you can have one tax declaration for more than one company. Note that this document does not discuss the legal aspects between which financial companies this is allowed. This central tax declaration can be a VAT declaration and/or a withholding tax of social contribution declaration. The central tax declaration will be done for all companies that belong to a specified company set. To achieve this central tax declaration,

tables in this table set must be shared between the companies that belong to this table set. It is not required to share the tax analysis tables.

In Cash Management, a tax payment will be created in the company from which the tax declaration is created.

R11200 Centralized Transaction Entry (KT)

You can enter transactions in one financial company for another financial company that belongs to the same group company. To support this, the tables in this table set must be shared between these financial companies.

R11300 Centralized Standard Currency System Reporting (KT)

Several financial reports can be printed across multiple financial companies. Examples of such reports are the Trial Balances. For currency systems other than the standard currency system, these reports are printed in the reference currency. In the standard currency system, you must set up reporting currency groups (tfgld0680m000) to be able to print these reports across multiple financial companies. Setting up reporting currency groups requires that the financial companies share at least one home currency. You must share the corresponding tables that are part of this table set, across these financial companies.

R11400 Centralized Transaction Types (KT)

This table set contains all tables that must be shared to have central transaction types.

R11500 Central Account Match Setup (KT)

This table set contains the tables that must be shared to set up central account matching. To enable central account matching, initialize the account matching setup per company. You can do this from within one company. You can perform the account matching process within the current company only.

If these tables are shared, you can also perform a global update across companies.

Note: Central account matching requires a shared chart of accounts.

R11600 Central Budget Master Data (KT)

This table set contains master data for the setup of budgets. For example, by sharing the budgets and budget accounts, each company can use the same code in its budget structure.

Note: Sharing these tables does not imply central budgets. The actual budgets remain by company.

R11700 Central A/P Header Documents (KT)

This table can be shared within a group company. This improves performance of the central payment process. In addition to this, sharing this table enables the view of Cash Forecast by Supplier / Payment Due Date (A/P) across financial companies.

R11800 Central A/R Header Documents (KT)

This table can be shared within a group company. This improves performance of the central direct debit process.

R11900 Central Payment Views (KT)

By sharing the tables of this table set from one company, an authorized user can view and manage the payments of all companies between which these tables are shared.

R12000 Central Receipt Views (KT)

By sharing the tables of this table set from one company, an authorized user can view and manage the (financial) receipts of all companies between which these tables are shared.

R12100 Central Reminder Diary Notes

These tables must be shared for those financial companies for which the reminder diary notes and activities, entered by an A/R credit analyst in one of these companies, must be visible from either of these companies.

R12200 Central Cross Validation Rules

This table set contains all tables that must be shared for central cross validation rules. These rules specify which dimensions apply to what ledger account.

Note: If you have a central Chart of Accounts (R10200), you can still have a decentralized cross validation rules setup.

R12300 Central Credit Control

These tables must be shared for those financial companies for which the A/R credit analyst wants to handle central credit collections and create reminder advices for invoices from multiple financial companies.

Note: Credit-control related ACR parameters (in table tfacr000) are only read from the (current) company you work in. Therefore, for a consistent way of working, either the credit collections and reminder advices should always be carried out from the same financial company, or the credit control parameters in the ACR parameters should be the same across these companies.

R12400 Central Aging Analysis

This table set contains all tables that must be shared to perform a central aging analysis for multiple financial companies.

R12500 – Central Received Invoices

Invoices for multiple financial companies that are part of the same financial group company, can be received and scanned centrally in one of these financial companies. Invoice matching and approval is performed in the responsible financial company, unless central purchase invoice matching is implemented. To enable the Central Received Invoices functionality, the tables from this table set must be shared between the financial companies:

The tables in this table set can be shared within a group company. Consequently, a relation with R10300 is available.

R12600 – Central External Invoices

Invoices can be received from external invoicing software such as Basware. These invoices are received in a financial company and from there they are processed to the financial company to which the invoice belongs.

When sharing the tables from this table set, these external invoices can also be viewed and processed in other financial companies.

The tables in this table set can be shared within a group company. Therefore, a relation is present to table set R10300.

R14900 – Maximum Sharing Financials (KT)

This table set contains all tables from the Financials (tf) package that can be shared. Tables that are not part of this table set cannot be shared.

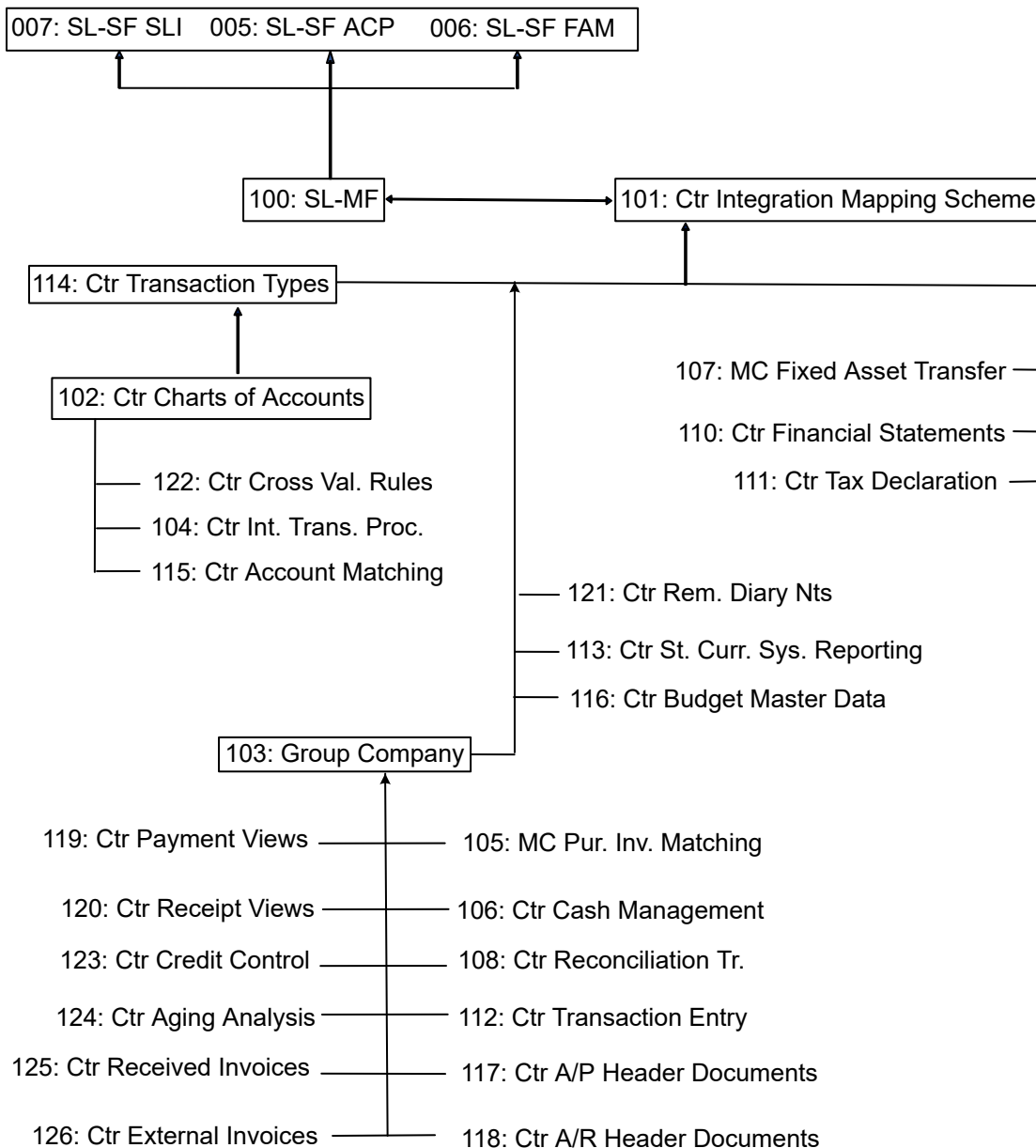
These tables must only be shared if you use multicompany purchase invoice matching:

- Order for Approval (tfacp240)
- Receipts (tfacp245)
- Invoices Related to Purchase Order Lines (tfacp250)
- Invoices Related to Purchase Receipt Lines (tfacp251)
- Purchase Consumptions (tfacp249)
- Invoices Related to Purchase Consumptions (tfacp253)
- Landed Cost Lines History (tfacp239)
- Landed Cost Lines (tfacp244)
- Landed Cost Lines by Invoice (tfacp254)

Note:

- The Purchase Invoice Authorizations (tfacp0006) table can only be shared between companies that use the same local currency.
- The tables of table set R10500 Multicompany Purchase Invoice Matching (KT) must only be shared if you use multicompany purchase invoice matching.

Relations between table sets



Invoicing

In a multifinancial company structure, depending on the required functionality, several tables of the Invoicing (ci) package can or must be shared between these financial companies. These table sets assume that the

common tables as described for the General Multicompany setup are also shared between the financial companies.

R15000 Central Invoicing (KT)

In case of central sales invoicing, invoicing can be done from one financial company for all financial companies. This table set contains all tables that must be shared to achieve central sales invoicing.

Note: Invoicing can be done from one financial company for other financial companies, but it is not possible to combine invoice lines from multiple financial company in a single invoicing batch, so the customer will receive one invoice per financial company.

R15100 Central Master Data Revenue Recognition

Revenue recognition according to the Point in Time method is a financial process that is related to the invoicing process. You can set up and maintain the master data for Revenue Recognition Point in Time centrally for all companies that share the tables or for an individual company if revenue recognition is not standard across the organization.

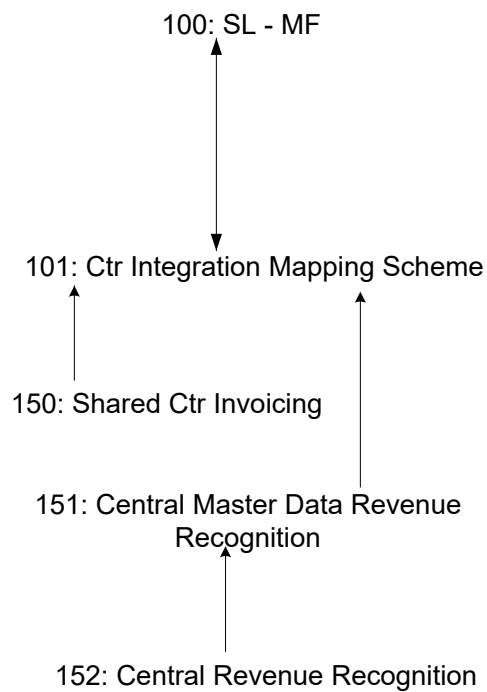
R15200 Central Revenue Recognition

When the revenue to be recognized is predictable, and usually similar to the predefined defaults, revenue recognition is performed centrally at a company main office or in a shared service center. If revenue recognition is unpredictable and mainly relies on local information, revenue recognition must be performed at a local level.

R19900 Maximum Sharing Ctr Invoicing (KT)

This table set contains all tables from the Invoicing (ci) package that can be shared. Tables that are not part of this table set cannot be shared.

Relations between table sets



Order Management

In case of multiple logistic companies, depending on the required order management functionality several tables from the Order Management (td) package can or must be shared between these logistic companies. These table sets assume that the common tables as described for the General Multicompany setup are also shared between the logistic companies.

Purchasing

R20000 Central Purchase Contracts (KT)

In a Central Purchase Contract scenario, a central contract (with the purchase office empty) can be used by purchase offices from different logistic companies. Furthermore, an overview is available of the ordered quantities per logistic company. In order to achieve this functionality, tables from this table set must be shared.

If you use central Purchase contracts, the logistic companies that share the purchase contracts must either all use Manufacturer Part Numbers or none of them must use Manufacturer Part Numbers.

Sales

R24000 Central Sales Contracts (KT)

In a Central Sales Contract Scenario the sales contracts are handled centralized and are applicable for all sales companies. To achieve this, all tables from this table set must be shared.

General Order Management

R28000 Central Product Catalogs (KT)

By sharing the tables in this table set, there is a central product catalog, implying that the product catalogs can be used in all companies.

R28100 Central Pricing (KT)

To maintain all prices centrally, all tables in this table set must be shared.

Note:

- If the PCG parameter Update Default Price Book (in tdpdg000) is selected, the Item Sales Data (tdisa001) and Price Books (tdpcg031) tables must both be shared or neither must be shared.
- If the PCG parameter Update Supplier Price Book (in tdpdg000) is selected, the Item Purchase Data (tdipu001) and Price Books (tdpcg031) tables must both be shared or neither must be shared.

R28200 Central EDI Setup (KT)

The definition of EDI messages is shared for all companies that use EDI. EDI execution is still done non-centrally by use of networks. These networks determine the path for a company where the EDI messages for that company are stored. To achieve this, all tables in this table set must be shared.

R28300 Central Purchase and Sales Statistics (KT)

This requirement concerns a central setup of the master data for purchase and sales statistics. To achieve this, tables in this table set can be shared.

Note:

- The user can decide to share only a selection of the tables in this table set, depending on the master data to be maintained centrally.
- It is not allowed to share the transactional tables of the statistics module, nor is this required: statistics for transactional data from other companies can be gathered and used from one company. This integration also takes into account differences in home currencies between the companies.
- Even though statistics can be gathered per item, business partner, channel, etc. it is not required to share these master tables (tcibd001, tccom100, etc.). When these tables are not shared, the statistics will be calculated correctly. The descriptions, however, will not be printed on the reports.

R29900 Maximum Sharing Order Management (KT)

This table set contains all tables of the Order Management (td) package that can be shared. Tables that are not part of this table set cannot be shared.

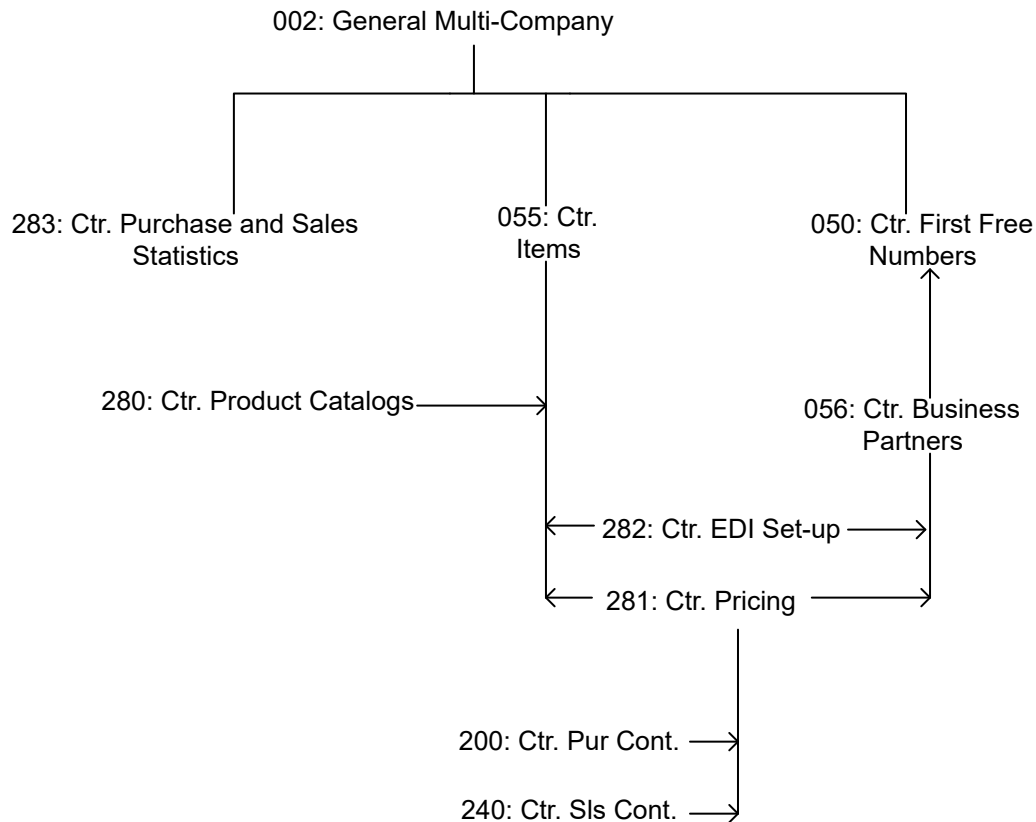
The following tables contain a purchase office, sales office, or warehouse (these entities must be left empty if these tables are shared):

- Item Purchase Defaults by Item Group (tdipu002)
- Item - Buy-from BP Information (tdipu010)
- Item - Manufacturer and Business Partner (tdipu035)
- Items by MPN (tdipu049)
- Item Sales Data (tdisa001)
- Item Sales Data Defaults (tdisa002)
- User Profiles (Purchase) (tdpur043)
- User Profiles (tdsls039)

Note:

- If Cost Set Lines (tdpur028) is shared, Purchase Parameters (tdpur000) must also be shared. In these parameters, the minimal position number for cost items is defined. This must be equal for all companies.
- If Cost Set Lines (tdsls028) is shared, Sales Parameters (tdsls000) must also be shared. In these parameters, the minimal position number for cost items is defined. This must be equal for all companies.

Relations between table sets



Note:

Central Pricing is not applicable if price books are not used within contracts. Central Items and Central Business Partners still remain applicable.

Manufacturing

In case of multiple logistic companies, depending on the required manufacturing functionality several tables from the Manufacturing (ti) package can be shared between these logistic companies. These table sets assume that the common tables as described for the General Multicompany setup are also shared between the logistic companies.

R30000 Central Bills-of-Material (KT)

This table set contains the tables to be shared to have central Bills of Materials. As a result, the same Bill of Material can be used on different logistical companies.

Note:

- The Bill of Material can contain a warehouse in which the component is stored and the allocation for a production order is made. When the Bill of Material is shared, the warehouse from the Bill of Material cannot be used. To achieve this, the Specify Warehouse in BOM parameter in the item production data (tiipd001) table must be cleared for all items. In that case, not the warehouse of the BOM, but the warehouse of the Item - Planning (cprpd100) or Item - Ordering (tcibd200) is used, depending on whether the Job Shop order is created by Planning or by Job Shop. The latter tables (cprpd100 and tcibd200) are not allowed to be shared.
- The tables from this table set cannot be shared when sites are in preparation or active.

R30100 Central Engineering (KT)

This table set contains the tables that must be shared to achieve central engineering. Central engineering implies that the engineering can be done centrally and the engineered items can be linked to an item in all logistic companies. So, via the relationship between engineering item and item, the engineering data and production data (including BOM and general item data) are linked. Therefore, the sharing EDM depends on the sharing of the general item data and production BOM.

Upon sharing of the engineering and the production data, these scenarios are possible:

		Production Item and BOM	
		Do not share	Share
Engineer- ing Item and BOM	Do not share	<i>Possible</i>	<i>Not possible</i>
	Share	<i>Possible</i> The main link between production and engineering data is established via the relationship table between engineering item and item. The reference to the general item can become problematic if the engineering data is shared, but the item data is not. Variant: Do not share the relation Engineering Item and Item (tiedm101) This is possible, but may be not straightforward. In this scenario the engineering item and engineering BOM are defined centrally, but the production BOM and general item data are not shared. The relationship between item and engineering item cannot be shared in this case (tiedm101). This means that the process to copy engineering data to production data must be run separately in each company and cannot be executed centrally.	<i>Possible</i>

R30200 Ctr. Configuration Models

When the product configuration models need to be the same between different companies, the tables from this table set must be shared.

R30300 Central Production BOM

This table set contains the tables that must be shared to support the use of central production Bills of Materials. If these tables are shared, the same production Bill of Materials can be used in different logistical companies.

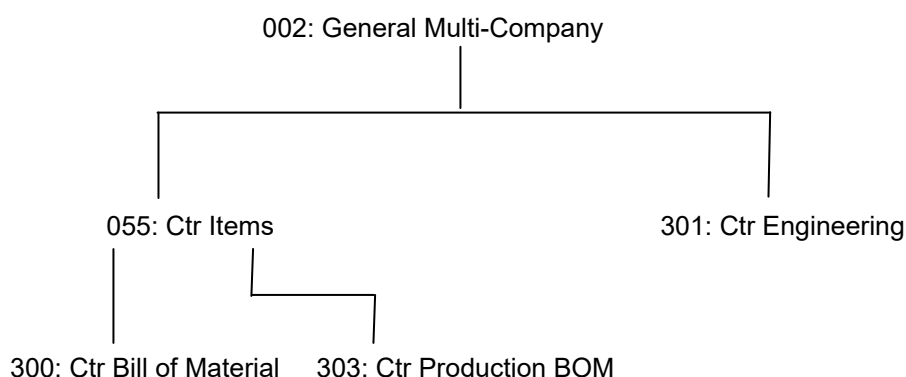
The tables in this table set can only be shared if the items are shared. Therefore, a relation is present to table set R05500.

R34900 Maximum Sharing Manufacturing (KT)

This table set contains all tables of the Manufacturing (ti) package that can be shared. Tables that are not part of this table set cannot be shared.

Note: If the Multisite concept is activated, the tiipd001 table and the tiipd002 table must not be shared.

Relations between table sets



Note:

- The 303 Ctr: Production BOM table set replaces table set 300: Ctr Bill of Material if the Sites and Job Shop by Site functionality is activated in the **Implemented Software Components (tccom0100s000)** session.
- The R30300 Central Production BOM can be used as a basis for Bills of Material for specific sites. A Bill of Material for a site can be used for planning, for the creation of a production order, and for the calculation of standard costs.

Enterprise Planning

For multicompany planning, no table sharing is required.

Warehousing

In case of multiple logistic companies, and depending on the required warehousing functionality, several tables from the Warehousing (wh) package can or must be shared between these logistic companies. These table sets assume that the common tables as described for the General Multicompany setup are also shared between the logistic companies.

Multicompany Warehouse Transfer

To have a warehouse transfer from a warehouse in one logistic company to a warehouse in another logistic company, at least the tables from table set R05500 Central Items, must be shared. It is not sufficient to have identical item codes, other attributes must also be the same.

R44900 Maximum Sharing Warehousing (KT)

This table set contains all tables of the Warehousing (wh) package that can be shared. Tables that are not part of this table set cannot be shared. This table set is primarily intended for customers who want to share tables in order to minimize master data setup or keep master data as consistent as possible.

Freight Management

In case of multiple logistic companies, depending on the required freight management functionality several tables from the Freight Management (fm) package can or must be shared between these logistic companies. These table sets assume that the common tables as described for the General Multicompany setup are also shared between the logistic companies.

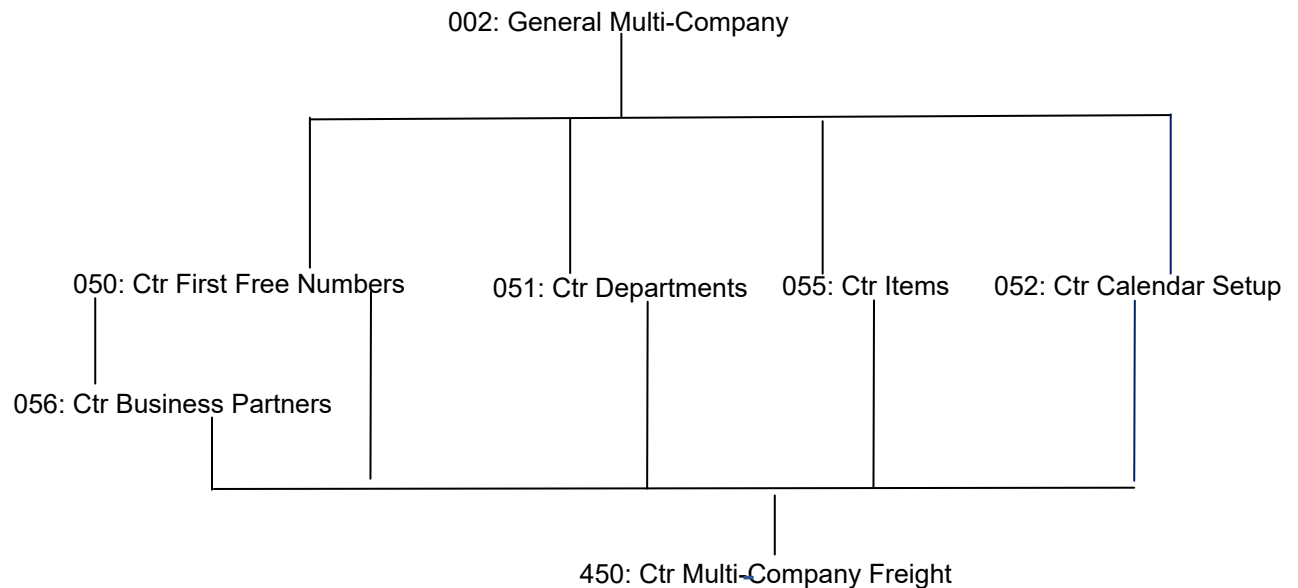
R45000 Multicompany Freight Mgt (KT)

LN enables you to centrally manage and process freight orders, order clusters, shipments and loads across multiple companies. In this way, you get a clear insight into transport-related requirements, real optimization in the handling of freight orders, consolidation and planning of loads and shipments, reduction of costs, proper subcontracting of transport to carriers, and so on. This table set contains all tables that must be shared to set up multicompany Freight Management.

R49900 Maximum Sharing Freight Management (KT)

This table set contains all tables of the Freight Management (fm) package that can be shared. Tables that are not part of this table set cannot be shared. This table set is primarily intended for customers who want to share tables, because they want to minimize setup of master data or to keep master data consistent.

Relations between table sets



Service

In case of multiple logistic companies, depending on the required service functionality several tables from the Service (ts) package can or must be shared between these logistic companies. These table sets assume that the common tables as described for the General Multicompany Setup are also shared between the logistic companies.

R50000 Central Service Resources (KT)

Service resources as service items and service employees can be shared across logistic companies. This table set contains the tables to be shared to have central resource management within Service.

If the following tables are shared, the service department must be left empty:

- Service Item data (tsmdm200)
- Service Employees (tsmdm140)
- Service Cars (tsmdm145)
- Service Areas (tsmdm105)
- Default Service Item Data (tsmdm205)

Note: The service employees (tsmdm140) can be shared only for information purposes. The employees can account time for any order only in the operational company of the department of the service employee.

R50100 Central Service Install Base (KT)

Installed base information is vital in the Service industry. By sharing the Service Install Base, it would be possible to detail out the sharing of installed base information across different companies.

On a primary level, the installed base consists of Serialized Items, Installation Groups, Installation Group lines, Physical Breakdown structures, Functional elements, and Serialized Item groups (also Reference designators, if applicable).

On a secondary level, it is necessary to share information regarding Work Center & Machines (from Manufacturing package), Usage class, Inspections, and Warranty terms.

This table set contains the tables to be shared to achieve a Central Installed Service Base.

Note:

- The serialized items in service (tscfg200) can be shared, but then the department must be left empty.
- The installation groups in service (tsbsc100) can be shared, but then the department must be left empty.
- If the serialized items in service (tscfg200) are shared, the physical breakdown structures (tscfg210) must be shared also.

R50200 Central Service Reference Activities (KT)

This table set contains the tables to be shared to have central Service Reference Activities, including Master Routings and Routing Options.

Note: Reference Activities (tsacm101) can be shared, but then the service department must be left empty.

R50300 Central Service Inspections Set-up (KT)

To achieve a central set of triggers, tables from this table set must be shared. This central set of triggers specifies which service inspections and preventive maintenance activities are required.

R50400 Central Service Preventive Maintenance Set-up (KT)

The preventive maintenance scenario specifies when which preventive maintenance activity should be executed. By sharing the tables from this table set, the preventive maintenance scenarios are set up centrally.

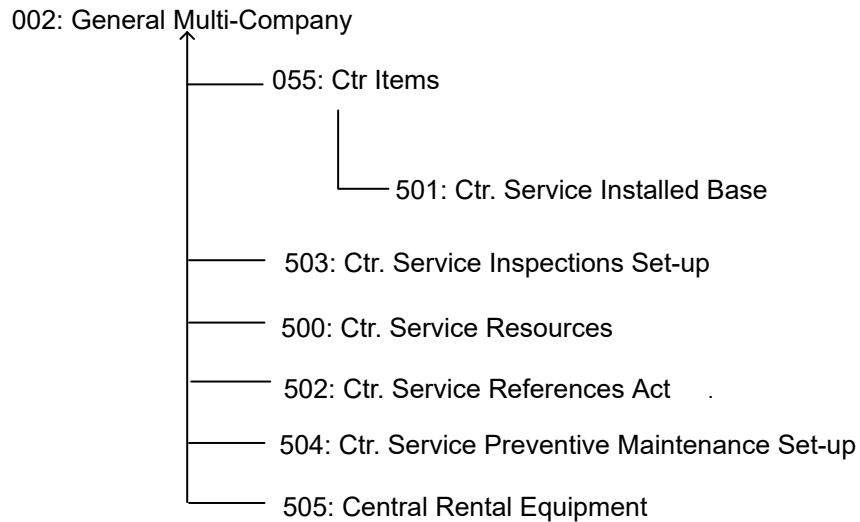
R50500 Central Rental Equipment

Rental equipment can be used in multiple logistic companies. To support this, the tables from this table set need to be shared.

R54900 Maximum Sharing Service (KT)

This table set contains all tables from the Service (ts) package that can be shared. Tables that are not part of this table set cannot be shared.

Relations between table sets



Project

In case of multiple logistic companies, depending on the required project functionality several tables from the Project (tp) package can or must be shared between these logistic companies. These table sets assume that the common tables as described for the General Multicompany Setup are also shared between the logistic companies.

R55000 Central Project Structures (KT)

By having a central project structure, entities of project structures can be managed centrally and used locally. So, there will be a common definition for the organization breakdown structure (user defined structures), activities and elements. To achieve this, tables from this table set must be shared.

Note:

- Depending on the required functionality, these entities can be shared independently of each other. During the implementation, there is the choice to decide on specific structures (activity/element/user defined structure) to be shared.
- It is not allowed to define a project specific organizational breakdown structure while sharing the user-defined Structure Entity.

R55200 Central Standard Project Surcharges (KT)

Via sharing the tables of this table set, standard project surcharges can be managed centrally and used locally. In this case, there is a common definition of the surcharges and these surcharges apply to all logistical companies.

Note:

- It is not mandatory to share all standard surcharge definitions. During each implementation, it is optional to share only a subset of these surcharges and the referenced tables.
- Via the standard surcharges definition it is possible to define the target financial posting company based on the posting types. These posting types are available:
- Project Enterprise Unit - Surcharges to be posted to project financial company
- Delivery Enterprise Unit - Surcharges to be posted to delivery company
- Fixed Enterprise Unit - surcharges to be posted to specified enterprise units financial company.

If a standard surcharge is shared, posting type Fixed Enterprise Unit is not allowed.

R55300 Central Standard Project Resource Library (KT)

Item, Labor, Equipment, Subcontracting, and Sundry are all considered as resources for the project planning and execution. A central standard project resource library addresses the need for a common resources pool and their rates in the enterprise project management solution. This table set contains the tables that can be shared to achieve a central project resource library.

Note: For each implementation, it is optional to decide on a specific resource type to be shared. Depending on the resources to be managed centrally, the tables of this table set can be shared independently of each other.

R55400 Standard Project Revenues (KT)

To achieve standardization of the project revenues for reporting, tables from this table set must be shared.

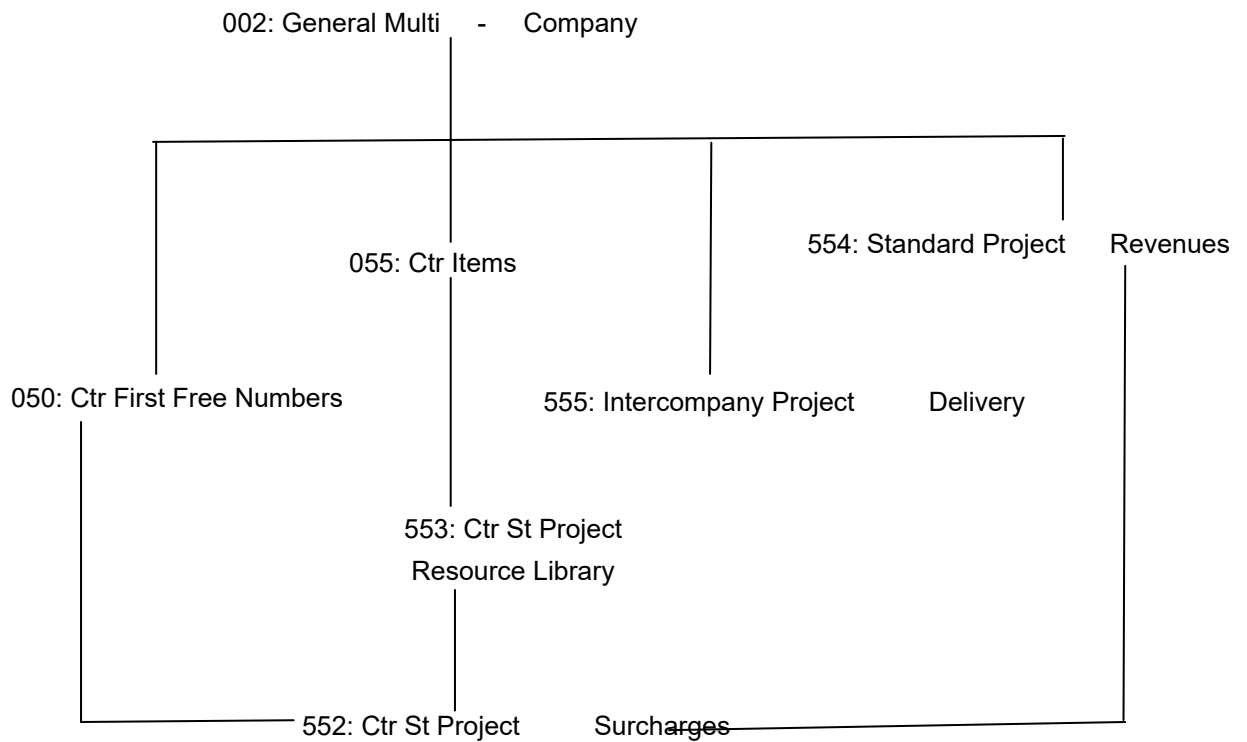
R55500 Intercompany Project Delivery (KT)

This table set contains all tables that must be shared to support goods delivery between two logistic companies through a warehouse transfer with a project peg in one or both of these companies.

R59900 Maximum Sharing Project (KT)

This table set contains all tables from the Project (tp) package that can be shared. Tables that are not part of this table set cannot be shared.

Relations between table sets



Quality Management

For multiple logistic companies, depending on the required quality management functionality several tables of the Quality Management (qm) package can or must be shared between these logistic companies. These table sets assume that the common tables as described for the General Multicompany setup are also shared between the logistic companies.

R60000 Quality Control Master Data (KT)

The quality characteristics can be set up and maintained centrally. By doing so, they become available across multiple companies for testing items for all kind of orders such as sales and purchase orders.

R60100 Central Sampling Plans (KT)

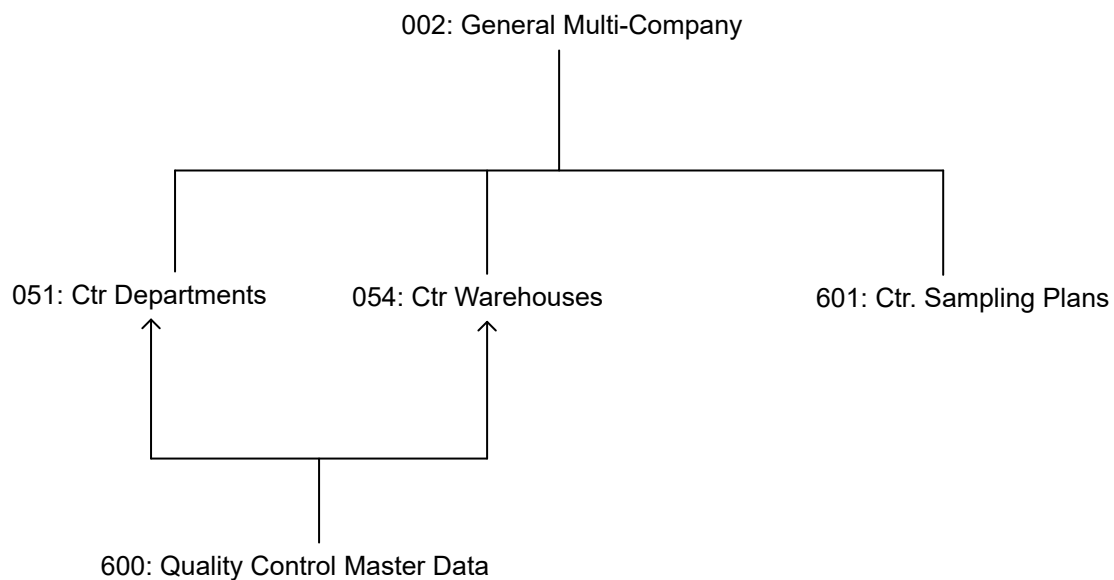
If tables from this table set are shared, sampling plans can be set up and maintained centrally.

R60200 Central FMEA Master Data

By sharing the tables from this table set, the Failure Modes and Effects Analysis (FMEA) master data can be set up and maintained centrally, and the FMEA systems, faults and rankings be made available across multiple companies.

R64900 Maximum Sharing Quality Management (KT)

This table set contains all tables of the Quality Management (qm) package that can be shared. Tables that are not part of this table set cannot be shared.

Relations between table sets

ODM

For multiple logistic companies, depending on the required data management functionality, several tables of the Object Data Management (dm) package can or must be shared between these logistic companies. These table sets assume that the common tables as described for the General Multicompany setup are also shared between the logistic companies.

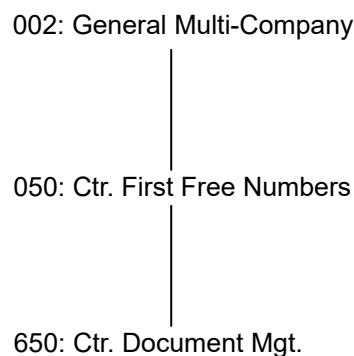
R65000 Central Document Management (KT)

Central document management implies that one document is available for the same entity (for example, item, business partner, or contract) across multiple companies. Therefore, if an item is shared and a document is linked to this item, to have this linked document available in all companies, central document management is required. To achieve this, the tables of this table set must be shared.

Note:

- To achieve central document management on a certain entity, for example, for items, this entity must also be shared. To achieve central document management on the engineering documents linked to an item, the item data must also be shared.
- If the documents are managed centrally, all entities such as sales orders and purchase orders to which documents are linked, must have unique IDs across companies. Suppose that in two companies a sales order SLS123456 exists (and the sales orders are not shared) and in both companies a document is linked to this sales order. In ODM, these orders cannot be distinguished from each other and the same document will be returned in both companies.
- This table set is identical to the maximum table set. Therefore, this table set contains all tables from the Object Data Management (dm) package that can be shared. Tables that are not part of this table set cannot be shared.

Relations between table sets



Localizations

If localization data is identical for the companies of your multicompany environment, you can maintain the localization data in one company and share the localization tables among the companies.

Unless stated otherwise, the localization table sets are shared between financial companies only. Several tables in the localization table sets contain references to financial tables, which cannot be shared to a logistic company. Tables without such references can be shared with a logistic company.

Note: If a reference is not mandatory, sharing the referenced table is not mandatory, but the field can be left empty in the parent table.

R80000 Ctr Localization Data

To support a setup of general localization data across companies, you must share the tables of this table set among these companies.

R80100 Malaysia Ctr Localization Data

To support central setup of localization data for Malaysia in one company on behalf of the entire organization, you can share the tables of this table set among the companies.

R80200 Spain Ctr Localization Data

To support central setup of localization data for Spain in one company on behalf of the entire organization, you can share the tables of this table set among the companies.

R80300 Mexico Ctr Localization Data

To support central setup of localization data for Mexico in one company on behalf of the entire organization, you can share the tables of this table set among the companies.

R80400 China Ctr Localization Data

To support central setup of localization data for China in one company on behalf of the entire organization, you can share the tables of this table set among the companies.

R80500 Chile Ctr Localization Data

To support central setup of localization data for Chile in one company on behalf of the entire organization, you can share the tables of this table set among the companies.

R80600 Turkey Ctr Localization Data

To support central setup of localization data for Turkey in one company on behalf of the entire organization, you can share the tables of this table set among the companies.

R80700 Romania Ctr Localization Data

To support central setup of localization data for Romania in one company on behalf of the entire organization, you can share the tables of this table set among the companies.

R80800 Hungary Ctr Localization Data

To support central setup of localization data for Hungary in one company on behalf of the entire organization, you can share the tables of this table set among the companies.

R80900 Peru Ctr Localization Data

To support central setup of localization data for Peru in one company on behalf of the entire organization, you can share the tables of this table set among the companies.

R81000 Angola Ctr Localization Data

To support central setup of localization data for Angola in one company on behalf of the entire organization, you can share the tables of this table set among the companies.

R81100 Multiple Indian Companies

If the Indian localization is implemented in multiple companies, the tables of this table set must be shared between these companies, regardless of the type of company.

The tables from this table set are also shared with logistic companies.

R81200 India Ctr. Master Data

To support central master data setup in one company on behalf of multiple companies for which the Indian localization is implemented, the tables of this table set can be shared between these companies.

R81300 Central Italian Tax Connector Data

To support central master data and additional invoicing data management for the Italian Tax Connector in one company on behalf of multiple companies, the tables of this table set can be shared between these companies.

R81400 Multiple Indonesian Companies

If the Indonesian localization is implemented in multiple companies, the tables of this table set must be shared between these companies, regardless of the type of company.

R81500 Indonesia Ctr. Master Data

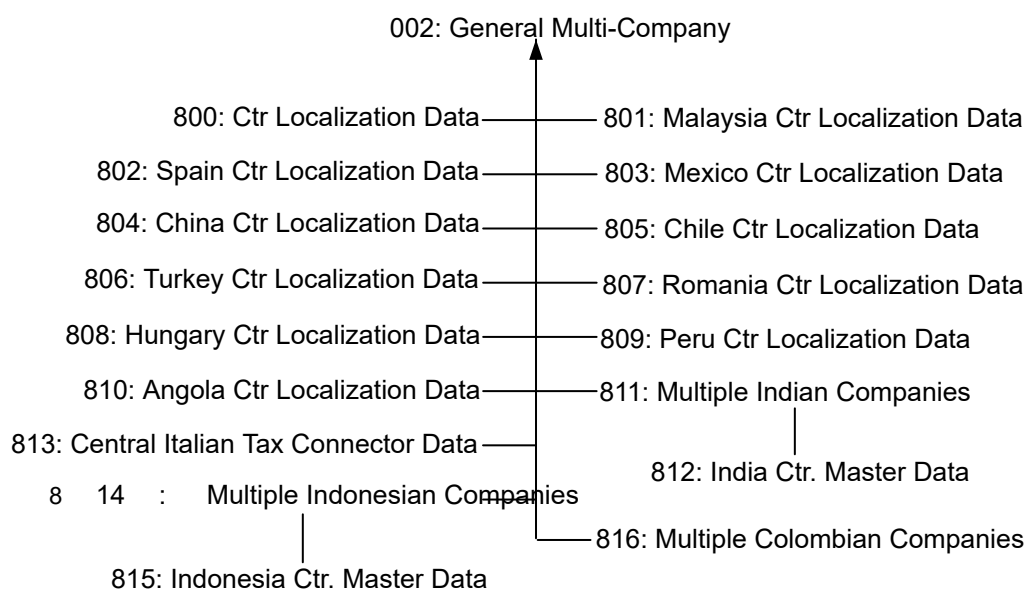
To support central master data setup in one company on behalf of multiple companies for which the Indonesian localization is implemented, the tables of this table set can be shared between these companies.

R81600 – Multiple Colombian Companies

When the Colombian localization is active in multiple companies, regardless of the type of company, the tables of this table set must be shared between these companies.

This functionality can be used only when the tables from table set R002 are shared as well.

Relations between table sets



People

For multiple logistic companies, depending on the required People functionality, several tables of the People (bp) package can or must be shared between these logistic companies. These table sets assume that the common tables as described for the General Multicompany setup are also shared between the logistic companies.

R70000 Central Employees (KT)

This table set contains the tables which must be shared to maintain the employees centrally.

Note: If employees have separate contracts of employment per logistic company, the Employee People Data (bpmdm001) must not be shared.

R70100 Central Hours Budget (KT)

In a Central Hours budget scenario the budgeted hours can be maintained central. To achieve this, tables from this table set must be shared.

R70200 Central Hours History (KT)

A Central Hours History scenario facilitates easy reporting and analyses of hours spent. To achieve this, tables from this table set must be shared.

R70300 Central Hours and Expenses Entry

To support a single session in which employees can specify hours and expenses for orders and projects of multiple logistic companies, the tables of this table set must be shared between the logistic companies.

To use this functionality, the tables from table sets R70000 Central Employees (KT) and R70200 Central Hours History (KT) must also be shared.

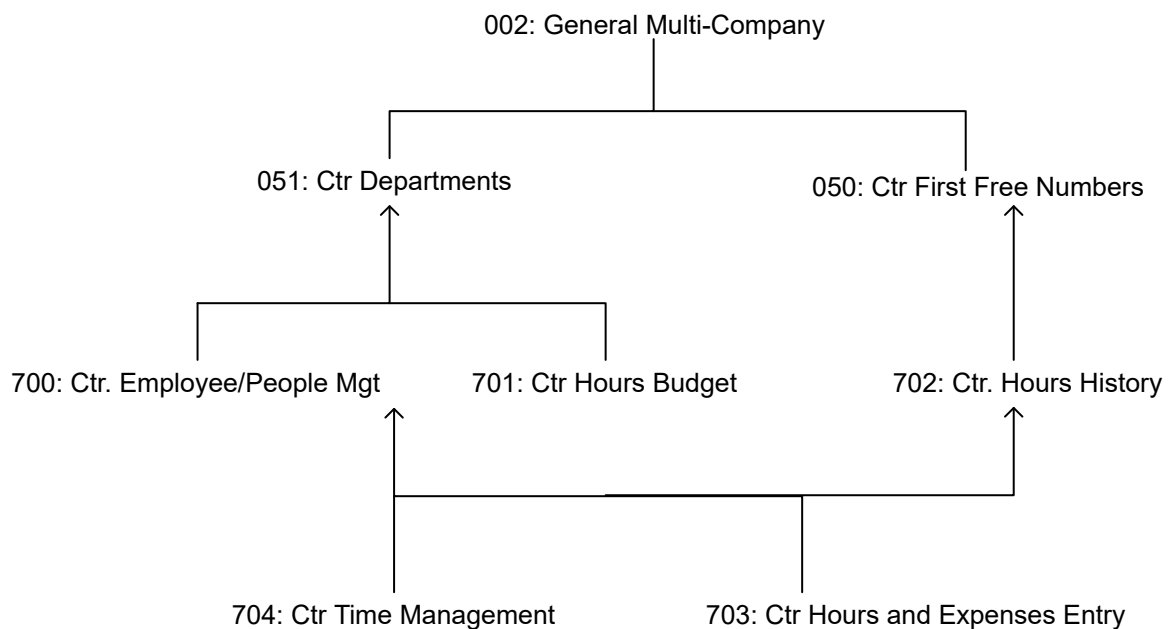
R70400 – Central Time Management

To support the setup of central master data for Extended Time Management in one logistic company on behalf of the other logistic companies, the tables of this table set can be shared between the logistic companies.

This functionality can be used only if the tables from table sets R050 and R700 are shared as well.

R74900 Maximum Sharing People

This table set contains all tables of the People (bp) package that can be shared. Tables that are not part of this table set cannot be shared.

Relations between table sets

Tools

R75000 – Central Job Management

Typically, each company stores its own basic job data. Therefore, a job runs for a particular company.

In a job, you can also run sessions in more than one company. You can run sessions in multiple companies when the job data tables of the associated companies are physically mapped to a single main company. For this purpose, the tables from this table set must be shared.

This functionality can only be used if the tables from table set R002 are shared as well.

Maximum Sharing

In the R99900 Maximum Sharing table set, all maximum sharing table sets of the individual packages are aggregated.

R99900 Maximum Sharing (KT)

This table set contains all tables throughout LN that can be shared. Tables that are not part of this table set cannot be shared.

Note: When you want to add a table to a table set, table set R99900 is used to check whether the table to be added can be shared. If it cannot be shared, this will result in an error message. Therefore, ensure the following:

- The R99900 table set is linked to the appropriate package combination.
- The link between the previous R999 version and the package combination is expired.

Index

P

Predefined
table set [23](#)

T

Table set
predefined [23](#)