



Infor10 Warehouse Mobility

NetTerm Installation Guide

Copyright © 2012 Infor

All rights reserved. The word and design marks set forth herein are trademarks and/or registered trademarks of Infor and/or related affiliates and subsidiaries. All rights reserved. All other trademarks listed herein are the property of their respective owners.

Important Notices

The material contained in this publication (including any supplementary information) constitutes and contains confidential and proprietary information of Infor.

By gaining access to the attached, you acknowledge and agree that the material (including any modification, translation or adaptation of the material) and all copyright, trade secrets and all other right, title and interest therein, are the sole property of Infor and that you shall not gain right, title or interest in the material (including any modification, translation or adaptation of the material) by virtue of your review thereof other than the non-exclusive right to use the material solely in connection with and the furtherance of your license and use of software made available to your company from Infor pursuant to a separate agreement ("Purpose").

In addition, by accessing the enclosed material, you acknowledge and agree that you are required to maintain such material in strict confidence and that your use of such material is limited to the Purpose described above.

Although Infor has taken due care to ensure that the material included in this publication is accurate and complete, Infor cannot warrant that the information contained in this publication is complete, does not contain typographical or other errors, or will meet your specific requirements. As such, Infor does not assume and hereby disclaims all liability, consequential or otherwise, for any loss or damage to any person or entity which is caused by or relates to errors or omissions in this publication (including any supplementary information), whether such errors or omissions result from negligence, accident or any other cause.

Trademark Acknowledgements

All other company, product, trade or service names referenced may be registered trademarks or trademarks of their respective owners.

Publication Information

Release: Infor10 Warehouse Mobility Version 3.x

Publication date: May 22, 2012

About this guide

This guide explains how to install and configure NetTerm Terminal Emulation software for Infor10 Warehouse Mobility.

About Infor10 Warehouse Mobility

Infor10 Warehouse Mobility is a comprehensive and robust data collection system that simplifies operations by streaming real-time information between the shop floor and your ERP system.

Infor10 Warehouse Mobility handles all communications with your ERP system. Users select transactions and scan bar-coded data by using hand-held radio frequency (RF) scanners. Infor10 Warehouse Mobility formats the data and transmits it to your ERP system. Any feedback from ERP is presented to the user exactly as it was received.

With Infor10 Warehouse Mobility, users work with data-entry screens that show only relevant data fields, many of which are pre-populated with default values. Infor10 Warehouse Mobility updates your ERP database with the same data integrity as transactions that you enter through the standard ERP user interface at a desktop terminal.

You can edit Infor10 Warehouse Mobility parameter data using a set of simple Web pages. The actual data is stored in XML files that correspond to the structure of your site.

Contacting Infor

If you have questions about Infor products, go to the Infor Xtreme Support portal at www.infor.com/inforxtreme.

If we update this document after the product release, we will post the new version on this Web site. We recommend that you check this Web site periodically for updated documentation.

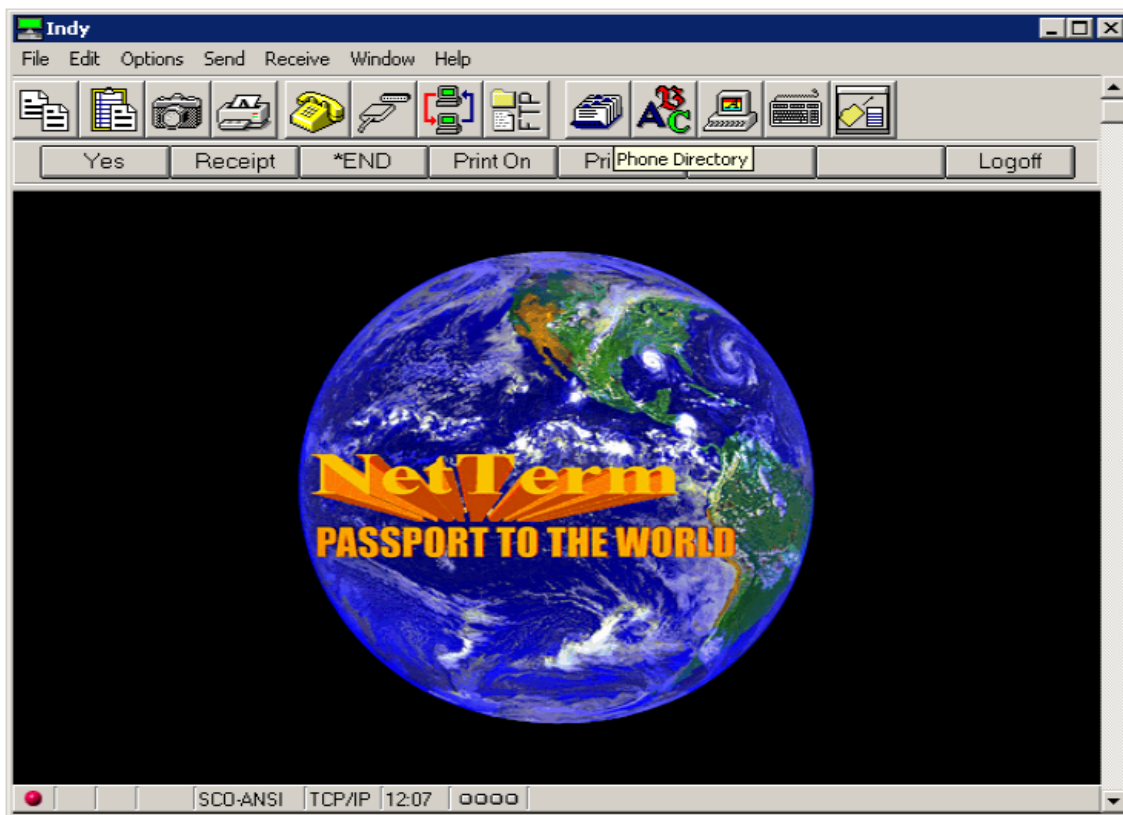
If you have comments about Infor documentation, contact documentation@infor.com.

Installing NetTerm terminal emulation software

Each NetTerm connection consumes one Infor10 Warehouse Mobility license. Also, the PC on which NetTerm is installed must have a static IP address.

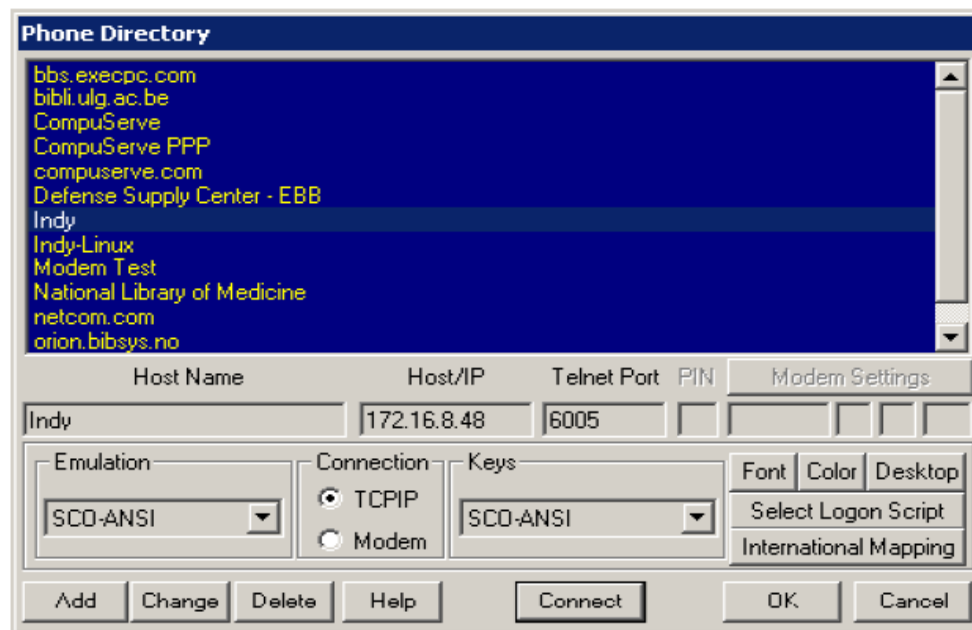
To install and configure the NetTerm terminal emulator:

1. Open an Internet browser and navigate to <http://download.com.com/3000-2155-10108818.html?tag=1st-0-1> to download the NetTerm (32-bit) program.
2. When the download is complete, double-click `nt3242ei.exe`. The NetTerm Installation Wizard opens.
3. Complete the NetTerm Installation Wizard. Accept all default parameters.
4. From the **Start** menu or from a desktop shortcut icon, launch the NetTerm terminal emulator.
5. From the toolbar, click the **Phone Directory** icon.



6. The **Phone Directory** dialog opens. Configure these parameters:

- In the **Host Name** field, specify a connection name (for example, `pcscanner` or `datac`).
- In the **Host/IP** field, specify the IP address of the Linux data collection server.
- In the **Telnet Port** field, specify 6005.
- From the **Emulation** list, select SCO-ANSI.
- In the **Connection** area, select TCPIP.
- From the **Keys** list, select SCO-ANSI.



7. Click **Add**.

8. Click **Connect**. The ADC interface launches.